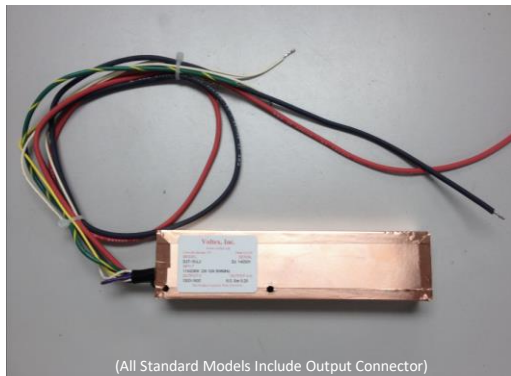


HELIUM NEON LASER POWER SUPPLY MODULE

MODEL: DJT-L J Series



(All Standard Models Include Output Connector)

The DJT-LJ series of dual AC input models are compact, high reliability switching power supplies, delivering ultra-low output ripple, superior input filtering, and a CDRH time delay.

Designed to provide outstanding conversion efficiency, the units are fully encapsulated in a specifically formulated epoxy for maximum heat dissipation and electrical insulation.

SPECIFICATIONS		DJT-15-LJ	DJT-22-LJ	DJT-28-LJ
Input Voltage	(VAC \pm 10% 50/ 60 Hz)	100 to 120 VAC or 220 to 240 VAC		
Input Current	(A, max sustaining)	.23 or .12	.31 or .16	.40 or .20
Output Voltage	(VDC)	1300 to 1900	1900 to 2600	2400 to 3200
Start Voltage	(kVDC)	> 8	> 10	> 10
Current Setting Range	(mA)	3.0 to 6.5	4.0 to 7.0	5.0 to 7.0

SPECIFICATIONS (Common to all models)			
Conversion Efficiency	(%)		> 85
Current Ripple	(% Peak to Peak)		< 1
Current Ripple	(% RMS)		< 0.3
CDRH Power-on Delay	(Seconds)	Cut Violet Loop to Eliminate	3 to 7
TTL Enable:			None
Input Connector:		Flying Leads	None
Output Connector:		Amphenol Alden D100FY"L"	Present
Output Fault Protection:		Open, Short, Arc	Present
Internal Bleed-down Resistor:			Present

ENVIRONMENTAL SPECIFICATIONS	OPERATING	NON-OPERATING
Temperature ($^{\circ}$ C)	-20 to + 50	-40 to + 80
Altitude (meters)	0 to 12,000	0 to ∞
Relative Humidity (% , non-condensing)	0 to 99%	0 to 99%

MECHANICAL SHOCK & VIBRATION	
Shock (per IEC 68-2-27)	300 m/s ² for 11 msec, Half Sine, 3 cycles per axis
Vibration (per IEC 68-2-6)	10-55 Hz, .35mm amplitude, 1 Octave per minute, 6 cycles per axis

NRTL COMPLIANCE

Electrical Safety	IEC 62368-1:2014	CAN/CSA-C22.2 No. 62368-1-14
Certifying Body		Pending
Certificate No.		Pending

SELF-CERTIFICATIONS

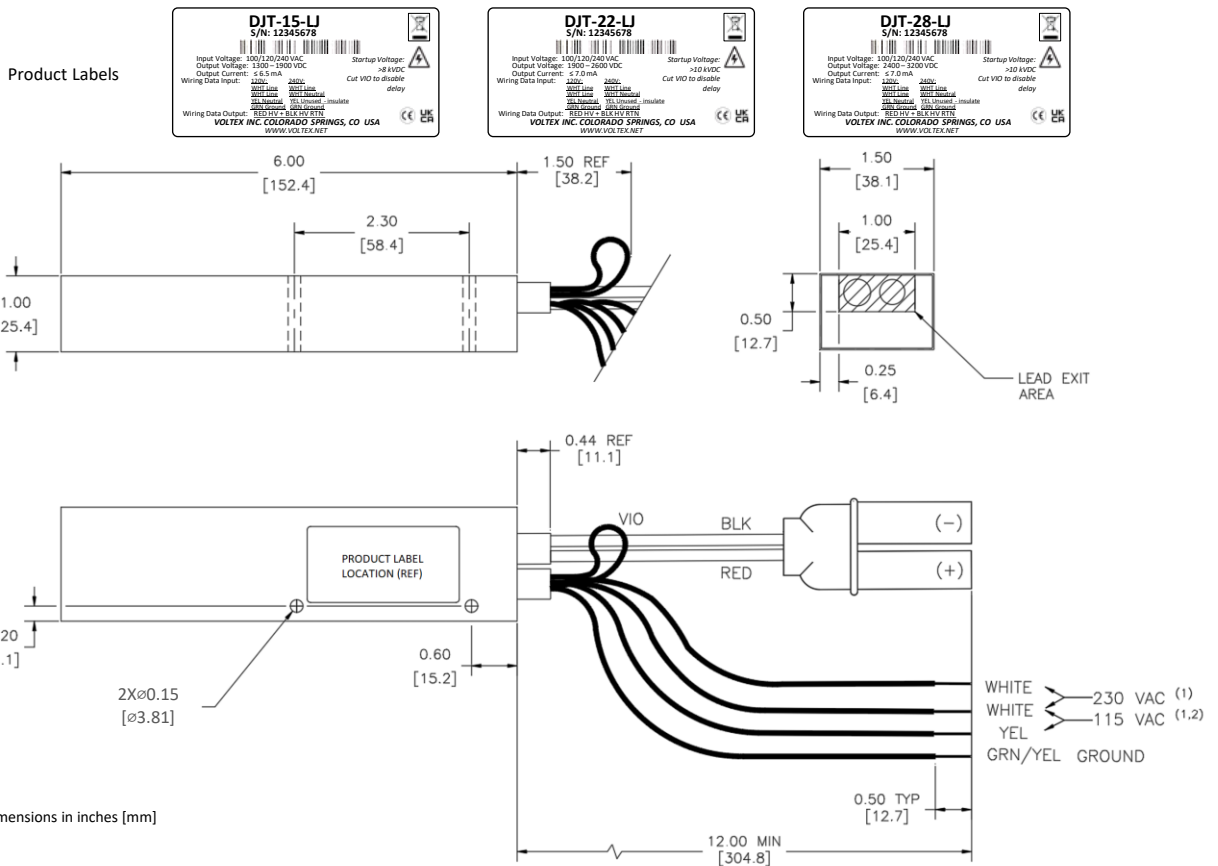
EMC		EN 61326-1: 2013
REACH		1907/2006 + Annex XIV, XVII
EU POP		EU 2019/1021
RoHS 3		EU 2015/863/EU

Please request Declaration of Conformity for further compliance information.

EXPORT INFORMATION

ECCN		EAR99
HTTS		8504.40.9510
Country of Origin		United States

THESE PRODUCTS ARE SOLD IN ACCORDANCE WITH UNITED STATES EXPORT ADMINISTRATION REGULATIONS. DIVERSION CONTRARY TO U.S. LAWS IS PROHIBITED.



Information contained herein is for reference only and subject to change without notice.
Removal of Product Label voids warranty and invalidates all regulatory compliance certifications.

- (1) Unused conductors must be insulated.
- (2) For 120 VAC operation, white wires may be connected together.