



Medevac Frontline

# When Seconds Decide Life or Death Ordinary People Can Do Extraordinary Things

**Join Frontline 300:  
the community keeping emergency care alive when the world breaks**

# People Aren't Dying Because Help Doesn't Exist

## They're Dying Because it Doesn't Arrive in Time

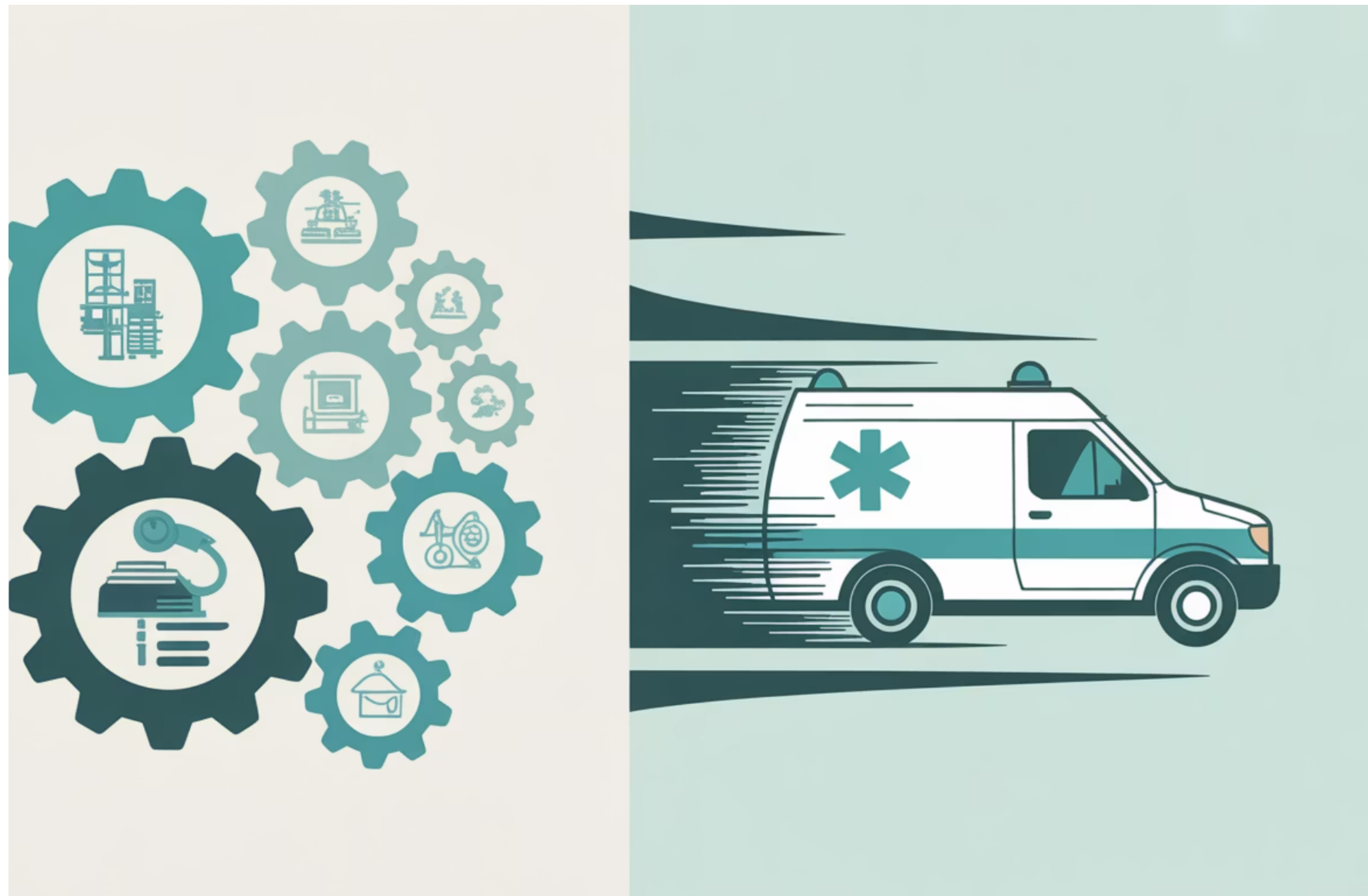
- Wars, disasters, crises don't wait for bureaucracy or planning
- Hospitals mean nothing if critically injured people can't reach them alive

The first **30 minutes** — the golden hour — determine survival or death

**Pre-hospital emergency care is the most neglected gap in humanitarian response worldwide.**



# The System Is Broken



## Big Systems Move Slowly. Emergencies Move Fast.

- Large NGOs navigate complex bureaucracy and approval chains
- Local first responders are courageous but chronically under-resourced
- Funding arrives reactively, heavily restricted, and far too late

**Lives are lost in the gap between crisis and response.** This is where Medevac Frontline operates.



# Medevac Frontline Is Not a Country Charity

## We Are an Emergency Capability

### Train Frontline Medics

We equip paramedics and medics with life-saving skills for challenging and sometimes hostile environments

### Deploy Rapid Systems

We establish Medevac and referral systems that function under fire

### Strengthen Local Response

We build capacity in communities facing ongoing conflict and disaster

### Leave Behind Skills

We create sustainability through knowledge transfer, not dependency

**We don't chase crises. We build readiness.** Our model ensures communities can respond effectively when disaster strikes.



# About Medevac Frontline (MFL)

Medevac Frontline (MFL) is a UK-registered humanitarian charity delivering specialist pre-hospital emergency care in conflict and disaster zones. When seconds determine survival, we provide the vital link between rescue and hospital.

Through rapid deployment, training, and sustainable system-building, MFL equips frontline medics and establishes referral capability where it is most needed. We operate under humanitarian principles of neutrality, independence, and impartiality, working alongside WHO and international partners to close the critical gap between injury and life-saving treatment.

## Team MFL

**CEO:** Fergus Beeley - is a frontline emergency specialist with operational experience in high-risk and conflict-affected environments. As a leader within Medevac Frontline, he combines clinical expertise with a deep commitment to preparedness and rapid response.

Fergus has worked directly on developing medevac systems and training programmes designed to function when conventional infrastructure fails. His focus is simple but urgent: ensuring that when seconds decide life or death, someone is ready to act.

**Ambassador:** Dominic West, is an Award-winning British actor known internationally for his roles in *The Wire*, *The Crown*, and major feature films, Dominic West supports Medevac Frontline as an Ambassador, lending his voice to raise awareness of the urgent need for frontline emergency care in conflict and disaster zones.

*"Medevac Frontline is a great charity, that operates in deprived or conflict stricken parts of the world to save lives following mass casualty events."* — Dominic West

**Patron:** Sir Ranulph Fiennes OBE, widely regarded as the world's greatest living explorer, serves as Patron of Medevac Frontline. His lifelong experience leading teams through extreme environments reflects the resilience, courage and determination required of MFL's paramedics.

*"The crews that work with this remarkable charity tend to be a special breed of person – like the people I used to select for my expeditions – personally motivated to succeed, persevering through setbacks and giving up all their time to the task."* – Sir Ranulph Fiennes OBE



# What Makes MFL Different

## Our Competitive Edge

Whilst large humanitarian organisations provide essential long-term infrastructure, Medevac Frontline fills a critical gap they cannot address: immediate, flexible, skills-focused emergency response.

We're deliberately lean, strategically agile, and built for rapid deployment. Our focus on training and systems - rather than heavy assets - means we can mobilise quickly and sustain impact long after we've left.

**Small by design. Fast by necessity.**

## MFL Approach

**Globally deployable** crisis capability

**Skills and systems** focused for sustainability

**Rapid mobilisation** within days, not months

**Readiness-led** preparation before disasters strike



# The Hardest Truth

## We Don't Lack Courage. We Lack Capacity.

### Emergency Funding Gap

Life-saving emergencies don't fund themselves — and donors often wait for media coverage before responding

### Unrestricted Support

Flexible, unrestricted funding that sustains readiness and rapid response is extraordinarily rare

### Stretched Teams

Volunteers and small operational teams work beyond capacity, risking burnout and mission failure

**Without people power and sustainable funding, even the most vital mission cannot survive.** This is why we need you.



# Frontline 300 Is Not a Donation Scheme

## It's a Community of Action



### People Who:

- Stand behind emergency responders when seconds matter most
- Help raise vital funds within their own networks and communities
- Amplify our stories, campaigns, and urgent appeals

Keep MFL operational and ready  
*before* the headlines arrive

**Not everyone can go to the  
frontline. But everyone can  
stand behind it.**



# Why We Need You

## You Don't Need:

- Medical training or clinical expertise
- Large donations or wealth
- Previous fundraising experience
- Specialised skills or qualifications

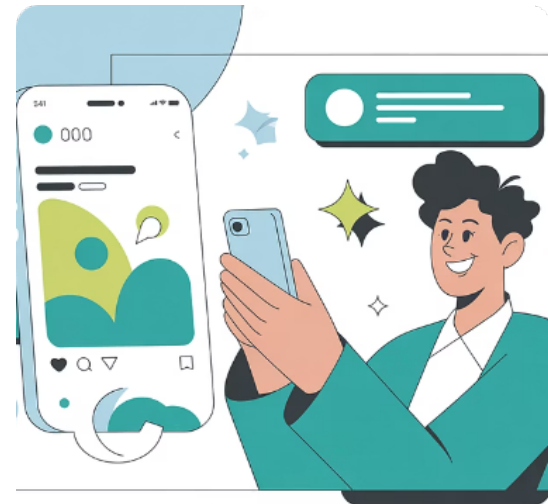
## You *Do* Bring:

- **Your voice** to share our mission authentically
- **Your network** of friends, family, colleagues, and contacts
- **Your time** — even just a few hours makes a difference
- **Your belief** that every life matters and deserves protection.

**Volunteers are how small charities beat big systems.**  
Your support multiplies our reach and impact exponentially.



# As a Frontline 300 Member, You May:



## Share Campaigns

Amplify emergency appeals and fundraising campaigns across your social networks



## Run Fundraisers

Organise local or online events, from bake sales to marathons



## Make Connections

Introduce corporate sponsors, community groups, or philanthropic contacts



## Join the Circle

Become part of a trusted community shaping MFL's future



## Host Events

Lead talks, awareness events, or sponsored challenges in your community

**No pressure. No minimums. Just commitment.** Every contribution — large or small — keeps emergency care alive.



# The World Doesn't Need More Spectators It Needs People Who Step Forward

## A Community

Connected individuals united by shared purpose and values

## A Movement

Collective action that transcends borders and transforms lives

## A Frontline Behind the Frontline

The essential support network that keeps responders operational

---

## Join the Frontline 300

Help Us Raise What Saves Lives

Be Part of Something That Matters

Because when seconds decide life or death — preparation is everything.

