



CASED HOLE LOGGING Multi-Finger Caliper

Indepth Production Solutions specializes in providing the oil and gas industry with high quality data to monitor well performance and diagnose potential problems. Founded in 2006, Indepth leads the industry in providing cost effective solutions for acquiring reliable well integrity data.



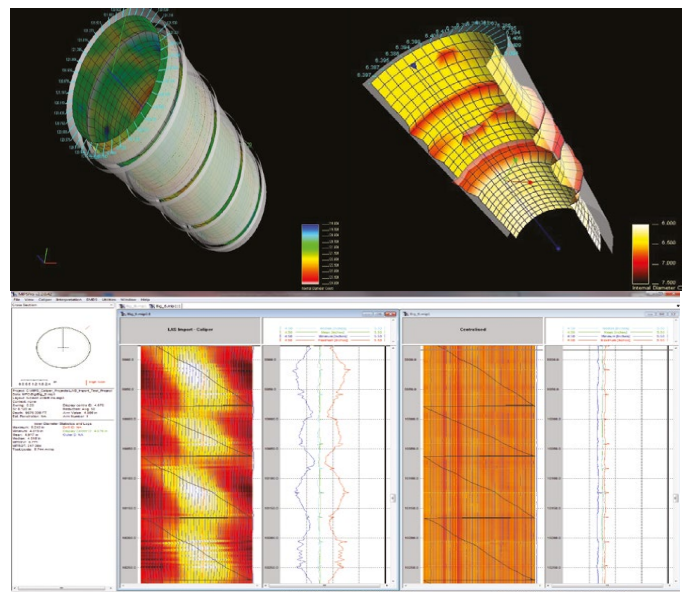
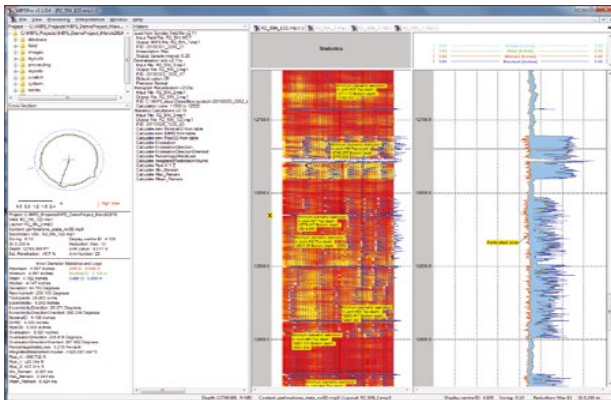
Product Overview

The Multi-Finger Caliper (MFC) has 24 to 60 high resolution calipers which measures the internal radii of the wellbore tubing and casing. Accurate measurements can be made in tubular sizes from 1.75 inches to 9.63 inches in diameter. The MFC uses a series of “contactless” displacement sensors and a corresponding number of measurement fingers. When moving along the inner casing wall, the radial displacement will be changed into an axial displacement of the sensor, which is then processed, coded, and transferred to surface system where the image of the casing will be obtained.

The MFC can be used to detect casing deformation, bending, fractures, holes, scale deposition, paraffin build-up, and inner wall corrosion with high accuracy.

Features and Applications

- ▶ Internal tubing and casing inspection
- ▶ 3D visualization tools aids interpretation of the data:
 - ◆ Verifying well construction
 - ◆ Mapping perforations
 - ◆ Identifying casing drilling damage



Providing Our Customers With “Best In Class” Technology

Email: dheddlestone@indepthps.com

<http://www.indepthps.com>