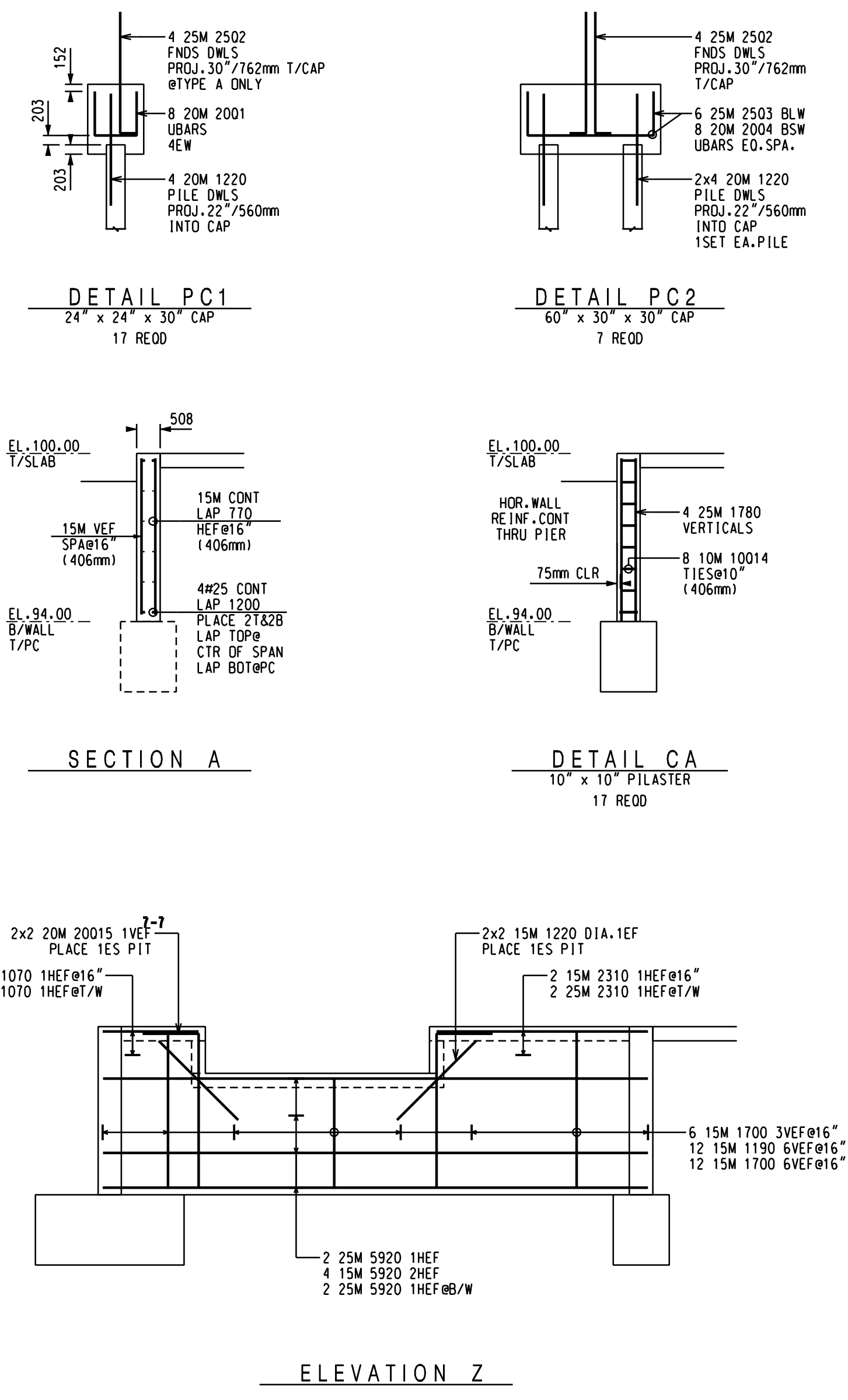
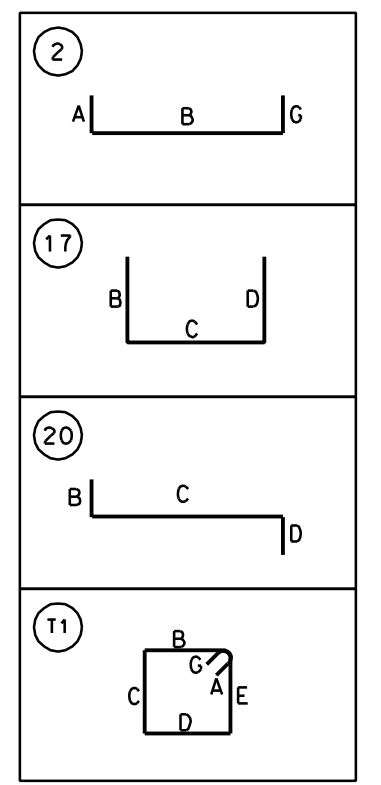


PLAN - FOUNDATIONS



ELEVATION Z

SIZE	EP	BAR MARK	V	BND TYP	CD	BENDING DIMENSIONS															
						A	B	C	D	E	F/R	G	H	J	K	O					
25M		2502		2		400	1321														
25M		2503		17			483	1372	483												
25M		2506		17			1219	1448													
25M		2509		20			1194	711	1194												
25M		25011		17			1200	1200													
20M		2001		17			483	457	483												
20M		2004		17			483	610	483												
20M		20015		17			610	1676													
15M		1505		17			762	1067													
15M		15010		20			762	711	762												
15M		15012		17			800	800													
15M		15013		20			610	560	610												
10M		1007		T1		100	152	152	152	152			100								
10M		1008		T1		100	152	254	152	254			100								
10M		10014		T1		100	152	152	152	152			100								



ALL REINFORCING STEEL TO BE CSA G30.18-M92 (R2002) GRADES

ABBREVIATIONS

- BOT. - BOTTOM
- C.B. - CORNER BAR
- COL. - COLUMN
- DWLS. - DOWNLAPS
- END. - EACH END
- E.F. - EACH FACE
- INT. - INSIDE FACE
- INT. W. - EACH WAY
- INT. W. - FIELD ADJUST
- F.F. - FAR FACE
- FTG. - FOOTING
- HOR. - HORIZONTAL
- I.F. - INSIDE FACE
- L.W. - LONG WAY
- N.F. - NEAR FACE
- O.F. - OUTSIDE FACE
- SHT. - SHEET
- S.W. - SHORT WAY
- STR. - STRAIGHT
- T&B. - TOP & BOTTOM
- VERT. - VERTICAL

REINFORCING STEEL PLACING DRAWING ONLY. USE IN CONJUNCTION WITH CONTRACT DRAWINGS. THIS DRAWING IS THE PROPERTY OF ARMAURE NATIONAL INC. WITHIN A PERIOD OF 15 DAYS OF DELIVERY, X RESERVES THE RIGHT TO FIELD INSPECT PRIOR TO REPLACEMENT OR RECONDITIONING OF WORK. NO REUSE OR REPRODUCTION OF THIS DRAWING IS PERMITTED WITHOUT THE WRITTEN AUTHORIZATION OF ARMAURE NATIONAL INC. UNLESS VERIFIED BY ENGINEER OR CONTRACTOR.

NOTICE: In case of fabrication or placing for any other reasons, the contractor shall be responsible for any errors or omissions. The contractor shall be responsible for any errors or omissions. The contractor shall be responsible for any errors or omissions.

CONTRACT NO. Z05047

DRAWING NO. R1

DATE 6-4-12

DRAWN BY: EMP/JAR

PROJECT: 540-824-0194-0066C-INC

LOCATION: EDUIN-INDUSTRIAL-DE

CUSTOMER: [REDACTED]

TITLE: FOUNDATION REINFORCING

CONCRETE REINFORCING PLACEMENT DRAWING