

# A D M I X T U R E S

We have been producing color hardeners and integral colors for concrete for over 40 years. We incorporated in 1970 as Admixtures Inc. and enjoy a reputation of excellent quality and service in the industry. In the last few decades we have also added curing compounds, stamp releases (liquid and powder) and a variety of sealers and stains. Our pigments are lime-proof, pure synthetic mineral oxides which meet or exceed the requirements of ASTM C-979 and "Design and Control of Concrete Mixtures" by Portland Cement Association. They are non-fading, durable and will last the lifetime of the concrete.

The colors in this brochure are representative of samples made with a medium-grade Type II cement. See our color hardener and stamp release color chart for an even wider variety of colors. Below the color name you will find the product number and the amount of color to use with every 94 pounds of Type II cement. Use same type and brand of cement throughout project. Changes in cement will affect color. Keep water consistent from load to load. Covering colored concrete with plastic, water-curing or use of curing products not made for colored concrete will cause discoloration.

				
Umber UM-32 1-1/2#	Pine Cone UM-32 3#	Warm Beige WB-40 1#	Sunburst WB-40 2#	Mocha Brown CO-56 2#
				
Camel L-42 3/4#	Golden Buff L-42 1-1/2#	Portofino V-84 1#	Seville V-84 2#	Nutmeg Tan K-68 2#
				
Copper Cream J-93 1#	Cashmere J-93 2#	Paloma J-93 4#	Almond Beige S-31 1#	French Beige S-31 2#
				
Mission Red T-98 3#	Smoke Gray B-13 1/2#	Slate B-13 1#	Ebony B-13 2-1/2#	Prairie Red R-82 1#
				
Desert Tan D-21 1#	Palm Springs Tan P-79 1#	Fawn F-37 1#	Amber Beige F-37 2#	Antique Brass F-37 3#
				
Honey Beige HB-34 1#	Sahara Beige HB-34 2#	Shell H-90 1/2#	Toffee H-90 2#	Sandrif A-24 1#

# A D M I T U R E S



Ecu  
N-29 1-1/2#



Chestnut  
N-29 3#



Rosewood  
W-33 1#



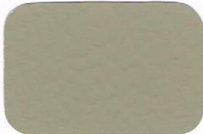
Granite Green  
GG-71 2#



Sage Green  
GR-50 2-1/2#



Coffee  
CO-56 4#



Acorn  
WH-80 1-1/2#



Wheat  
WH-80 3#



Dusky Green  
DG-55 2-1/2#



Shadow Green  
SG-90 3#



Teakwood  
K-68 4#



Tuscan Sand  
CN-12 1-1/2#



Cobble Brown  
CN-12 3#



Toasted Cream  
TC-36 1-1/2#



Maize  
TC-36 3#



Sunrise Gold  
S-31 3#



Aztec Gold  
G-29 1-1/2#



Gold Coast  
G-29 2-1/2#



Spice  
SP-37 2#



Citron Buff  
CB-99 1#



Brick Red  
R-82 2#



Pottery Red  
R-82 3#



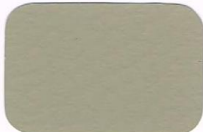
Light Oak  
GI-43 2#



Ginger  
GI-43 4#



Canyon Brown  
Y-57 2-1/2#



Bisque  
Q-72 2-1/2#



Cinnabar  
AR-60 2#



Graystone  
C-63 1/4#



Chocolate  
C-63 2#



Cal-Tan  
C-63 3#



Buckskin Brown  
A-24 1-1/2#



Adobe  
A-24 2-1/2#



Vintage Gold  
I-88 2#



Bronze  
I-88 3#



UCR Tan  
U-27 2#