

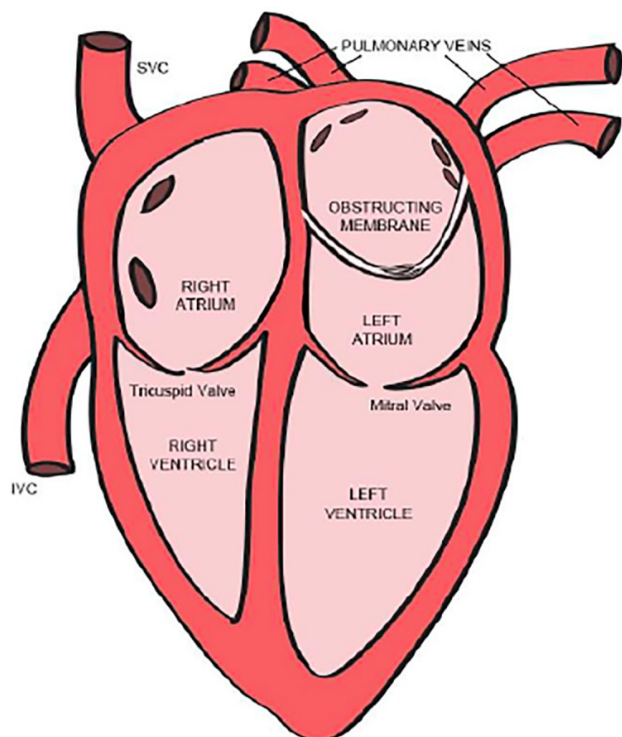
# COR TRIARIATUM

## Epidemiology



- Considered extremely rare
- Estimated to represent 0.1% of patients with congenital heart disease
- Affects males and females equally

## Etiology



Anomalous division within the atrium (left or right) resulting in impeded flow into the corresponding ventricles. Condition is often linked with additional congenital heart anomalies, including an atrial septal defect or a patent foramen ovale.

Impaired blood circulation from the proximal chamber to the distal chamber results in an accumulation of pressure proximally. Consequently, elevated pressure is transmitted backward, giving rise to pulmonary venous hypertension.

Halfman C, Thabet A, Blue R, Greenfield T. Cor Triatriatum: Case Report of Emergency Department Diagnosis. Clin Pract Cases Emerg Med. 2018 Jun 12;2(3):227-230. doi: 10.5811/cpcem.2018.5.37921. PMID: 30083639; PMCID: PMC6075497.

## Presentation

### Infancy

- Respiratory distress
- Failure to thrive

### Adolescence

- Abdominal pain
- Nausea
- Weight loss
- Atrial dysrhythmias



## ER Management



Oxygen supplementation, intravenous fluids, and the judicious use of diuretics or other medications to alleviate congestive heart failure symptoms, with a subsequent emphasis on timely consultation with a cardiac specialist for further assessment and potential surgical intervention

## Additional Clues



- Atypical murmur
- Recurrent respiratory distress
- Cyanosis
- Unilateral pulmonary edema