



January 2020

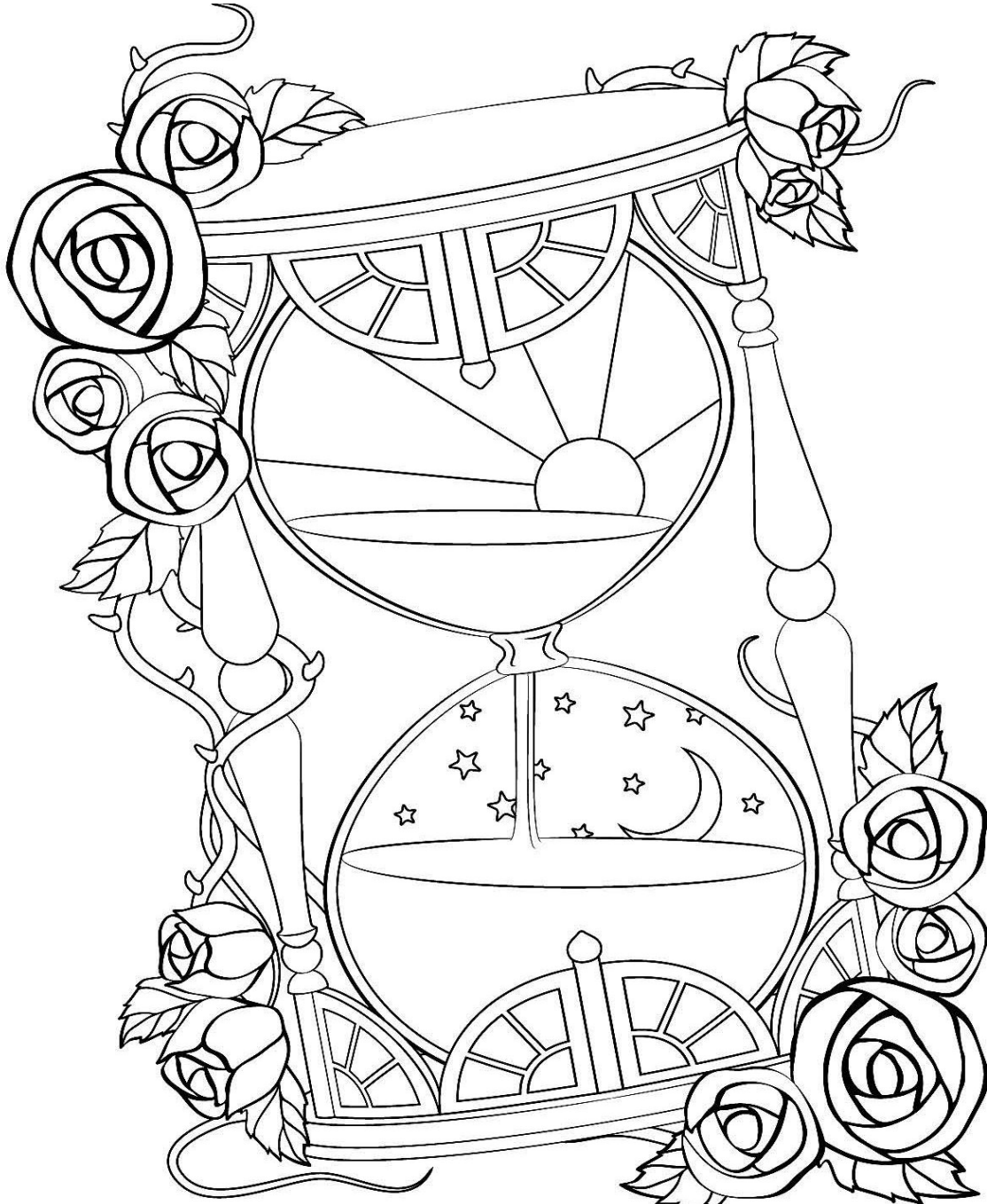
MERCER COUNTY COUNCIL ON AGING

www.mccoa.net



419-586-1644

Our mission is to help older people live dignified and reasonably independent lives in their own homes for as long as possible.



If you are interested in receiving your newsletter electronically, give us your email address in the office or call us at 419-586-1644.



From the Director's Desk:

Happy New Year! Now we have to get into the habit of writing 2020 instead of 2019. If you are like me, it will take an entire month of mistakes to get there. Saying 2020 is also going to take some getting used to because it makes us sound like we are ophthalmologists. Are we talking the year or vision? (Don't let Mr. Green know I've made such a bad joke. He thinks I'm hilarious). Seriously, let's talk vision for a moment. Mine is pretty bad due to an inflammatory disease.



Even corrected, I only have one eye that just barely skates in at 20/20. I had cataracts removed when I was 40, and there is quite a bit of scarring, which means that my eyes don't dilate properly. This is a wonderful party trick with new eye doctors. However, I'd like to think that my vision for MCCoA is by far much better. We have come a long way in the four years since I have been here and I see more growth for us in the future. We are embarking on a building project (see page 10 for more information); we will be opening a new meal site in Rockford, and we have a partnership in the works with the Spiritual Center in Montezuma that will create new opportunities for fellowship. More and more people are becoming aware of who we are and what we do. This means we are creating new partnerships, garnering stronger community support, and helping more seniors than ever before. My vision for the future of MCCoA includes each and every one of you. I am tracking trends and responding to needs, which continue to evolve. I am working hard to make sure that MCCoA is responsive, active and growth-oriented. I'm excited for things to come and know you will be, too.

Sharon M. Green



GARAGE SALE DATES FOR 2020

February 27 - March 2

May 14 - May 18

July - to be announced

September - to be announced

November - to be announced

We are always looking for garage sale assistance from taking donations, sorting and setting up to running checkouts during the sale. Call Tash at 419-586-1644 if you would like to help. Remember, we are always looking for volunteers to clean up after the sale ends!

Garage Sale Hours		
Thursday	8:30	6:30
Friday	8:30	4:00
Saturday	9:30	4:00
Sunday	9:30	4:00
Monday	8:30	4:00

Note: Volunteers are available to accept donations every Tuesday and Thursday (except during set up & garage sale) from 8:30 to 4:00 in the 4 bay garage. As always we can use many hands during this donation time, please call Tash if you have any time you could help out!

Informational Presentations/Support Groups

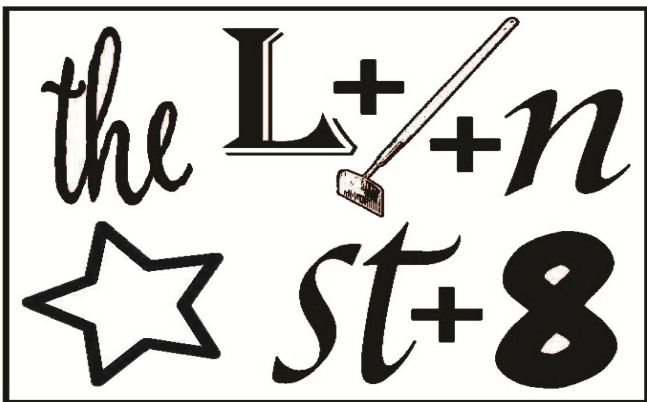
The Council on Aging hosts several **informational presentations/support groups**. We encourage you to come and bring family and friends. See the schedule below:

Monday, January 6, 2 pm - A representative from the Ohio Attorney General's office will present **Get Involved, Get Safe: Stop Elder Financial Abuse**. Seniors (age 60 and up) are particularly vulnerable to elder maltreatment, however many incidents likely go unreported. Learn about the latest scams targeting our senior population, an overview of elder abuse, who to call in case someone suspects elder maltreatment and find out how to protect yourself and your loved ones. This workshop is intended for senior/community audiences.

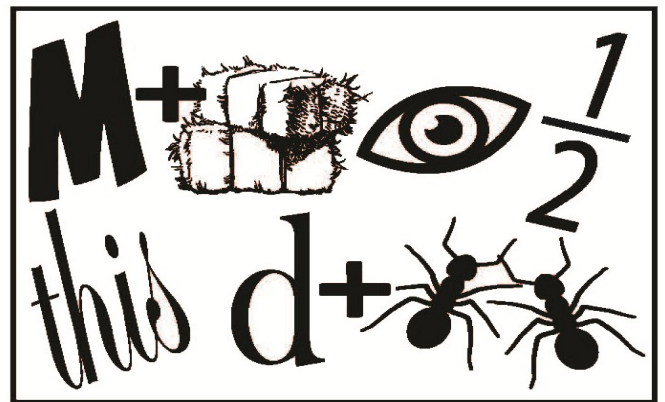
Friday, January 17, 10 am - Alzheimer's Association caregiver support group. This group is conducted by trained facilitators and is a safe place for caregivers, family and friends of persons with dementia to develop a support system, exchange practical information on care giving challenges and possible solutions, talk through issues and ways of coping, share feelings, needs and concerns, and learn about community resources. Meetings are located at the Mercer Health Mercer County Community Hospital in the Luken Meeting Room (located on the first floor in the East Wing) 800 W. Main Street, Coldwater. If you have questions contact Amy Buening 419-586-1644.

Concentration Puzzles

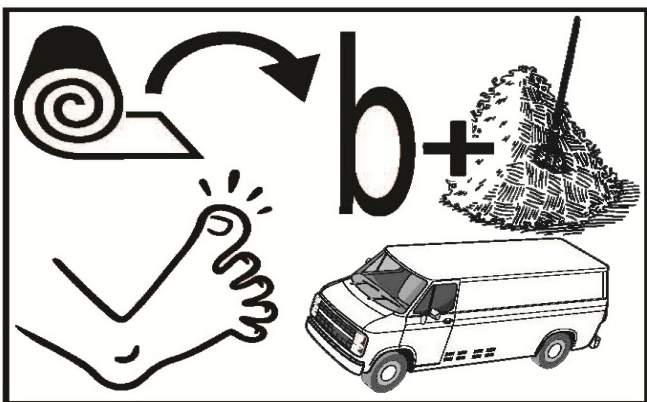
Use the visual clues in the puzzle boxes to figure out the phrases.



Puzzle #1



Puzzle #2



Puzzle #3



Puzzle #4

Answers on page 5.

MARK YOUR CALENDAR!!

- February 3 - Lunch Craft
 - February 4 - Lunch at Rockford
 - February 5 - Linda Pollitz - Alzheimer's - One on One
 - February 6 - Craft Class - Ribbon Weaving Hearts
 - February 10 - Art Class
 - February 12 - Neighborhood Nurse
 - Friday, February 14 - All Day Quilt Group
 - February 17 - Label Newsletter
 - February 18 to February 26 - Garage Sale - SET UP
 - February 27 - Texas Hold 'Em
 - February 27 to March 2 - GARAGE SALE
- Check next month's newsletter for more information.

Wii Bowling Tournament

A BIG thank you to everyone who participated in our Wii Bowling Tournament!!

This year's winners are:

1st place: Lou's Crew

Lu, Ed, Mike, & Eileen

2nd place: Just for Fun

Charlene, Joyce, Lorene* & Margo

3rd place: The Four Roses

Barb, Donna, Joan, & Kay

*Lorene Zuber was the highest scoring bowler over all!!!



**Our offices will be closed
Wednesday, January 1
to celebrate New Year's Day!**

Spotlight on Lunch at Rockford!!!



We are happy to announce we will be expanding our remote meal sites in 2020 to include Rockford, Ohio and the surrounding areas. Discounted meals will be offered on the first Tuesday of every month starting February 4. Meals will be prepared by Rockford Carry-Out and sponsored by The Laurels of Shane Hill. Lunch will be served at 11:30am at The New Shane Hall in Shane's Park, 420 Holly Drive. MCCoA will provide entertainment or an activity following the meal. Although the program is geared towards seniors, we welcome community members of all ages! Meals will be \$3/person and must be reserved at least 24 hours in advance. Just call



MCCoA at 419-586-1644 and ask for Eileen. Mercer County seniors are eligible for free transportation. To schedule a ride, call 419-586-1644 and ask for Linda Hoskins, our transportation supervisor.



Art Class - Monday, January 13 at noon. We will be making a bowl with leaves on the edge using clay. The cost is only \$10.00 and all supplies will be provided. Call 419-586-1644 today to reserve your spot.

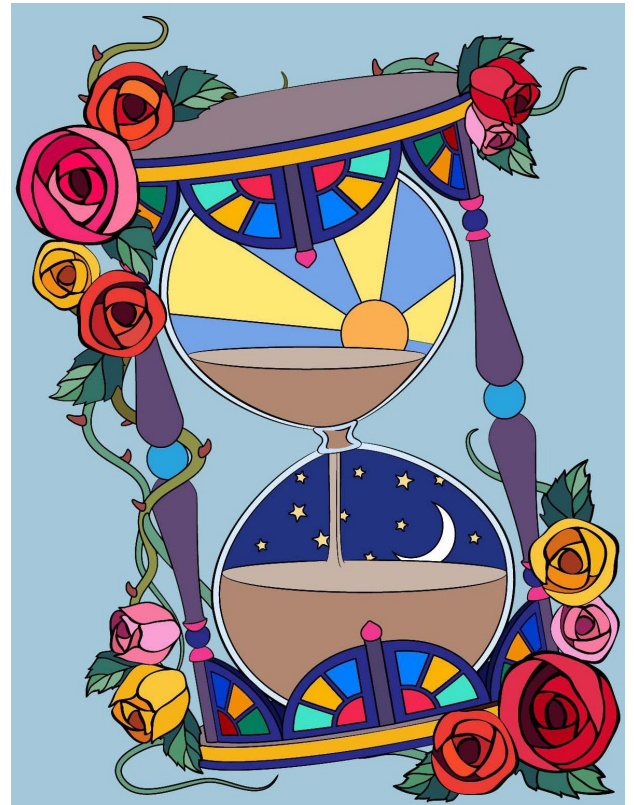
Chair Yoga has a new time!! Beginning Thursday, January 2, both chair yoga classes will start at 12:30 pm. So plan on joining us at 12:30 for an hour of wonderful yoga stretching and moving! Cost of each class is only \$3.00.



Lunch Bunch Craft Class - Monday, January 20, 2020 Join us for lunch at 11:00 am and stay for a free fun art project at 11:30 am. We will be making cute pinecone snowmen skiing!! Let us know you are staying for the craft when you order your meal. Remember, meal reservations are due by noon the day before. If you do not want to eat lunch but would like to join us for the craft project the cost will be \$2.00, just call and register. All supplies will be provided.



Craft Class - Monday, January 27 at 12:00 pm. Join Tash and Dawn as we learn to make a Macramé wall hanging. This class will be great for the beginner and experienced as well. We will start by going over the 10 basic macramé knots used and then make a small wall hanging. All supplies will be provided. Cost is only \$2.00. Call and register today. Stop by the display wall beside the kitchen and see samples of our upcoming craft projects!



(picture on the cover)

Concentration Puzzle

(Puzzle on page 3)

Puzzle #1: The Lone Star State

Puzzle #2: May I have this dance?

Puzzle #3: Roll over Beethoven

Puzzle #4: Put a lid on it



WINNER WINNER!!!

If you see Connie Clark, congratulate her. She is the first winner of a \$10 gift card to Walmart for the swipe to win! It's easy to enter and win. Just swipe your MY Senior Center card each time you come in and join us for a activity. If you don't have a card or want to know more about the drawing just ask. We will be happy to show you how it works!!!



Twenty years from now you will
be more disappointed by the things
that you didn't do than by the ones
you did do. So throw off the
bowlines. Sail away from the
safe harbor. Catch the
trade winds in your sails.
Explore. Dream. Discover.

-Mark Twain

January 2020

Sunday	Monday	Tuesday	Wednesday	Thursday	Friday	Saturday
<p><i>Italicized and underlined</i> activities are held in the Annex.</p> <p>Activities marked with an * have a fee.</p> <p>Activities marked with () are off campus.</p>			<p>1</p> <p>OFFICES CLOSED</p> <p>HAPPY NEW YEARS</p>	<p>2</p> <p>11:00 - Lunch Bunch* (12:00 - Lunch - The Gardens of St Henry*) 12:30 - Chair Yoga* 5:30 - Dinner* 6:30 - Cards*</p>	<p>3</p> <p>11:00 - Lunch Bunch* 12:30 - Cards*</p>	<p>4</p>
<p>5</p> <p>6:30 - Cards*</p>	<p>6</p> <p>11:00 - Lunch Bunch* 12:30 - Chair Yoga* 2:00 - Get Involved, Get Safe: Stop Elder Financial Abuse</p>	<p>7</p> <p>11:00 - Lunch Bunch* 12:30 - Bridge* 12:45 - Line Dancing</p>	<p>8</p> <p>10:30 Neighborhood Nurse BP & Glucose Testing 11:00 - Lunch Bunch* (12:00 - Lunch - Shrine - Maria Stein*) 12:30 - Bingo* <u>1:00 - Toe Nail Trimming*</u></p>	<p>9</p> <p>11:00 - Lunch Bunch* (12:00 - Lunch - The Gardens of St Henry*) <u>1:00 - Board Mtg</u> 12:30 - Chair Yoga* 5:30 - Dinner* 6:30 - Cards*</p>	<p>10</p> <p>11:00 - Lunch Bunch* 12:30 - Cards*</p>	<p>11</p>
<p>12</p> <p>6:30 - Cards*</p>	<p>13</p> <p>11:00 - Lunch Bunch* 12:00 - Art Class - Clay Bowl* 12:30 - Chair Yoga*</p>	<p>14</p> <p>11:00 - Lunch Bunch* (12:00 - Lunch - Ft Recovery Library*) 12:30 - Bridge* 12:45 - Line Dancing</p>	<p>15</p> <p>11:00 - Lunch Bunch* (12:00 - Lunch - Shrine - Maria Stein*) 12:30 - Bingo*</p>	<p>16</p> <p><u>8:00 - All Day Quilt Group</u> 11:00 - Lunch Bunch* (12:00 - Lunch - The Gardens of St Henry*) 12:30 - Chair Yoga* 5:30 - Dinner* 6:30 - Cards*</p>	<p>17</p> <p>(10:00 Alzheimer's Support Group - Mercer Health - Luken Room) 11:00 - Lunch Bunch* 12:30 - Cards*</p>	<p>18</p>
<p>19</p> <p>6:30 - Cards*</p>	<p>20</p> <p>9:30 - Label Newsletter 11:00 - Lunch Bunch* 11:30 - Lunch Craft - Pinecone Snowman 12:30 - Chair Yoga*</p>	<p>21</p> <p>11:00 - Lunch Bunch* 12:30 - Bridge* 12:45 - Line Dancing</p>	<p>22</p> <p>11:00 - Lunch Bunch* (12:00 - Lunch - Shrine - Maria Stein*) 12:30 - Bingo*</p>	<p>23</p> <p>11:00 - Lunch Bunch* (12:00 - Lunch - The Gardens of St Henry*) <u>12:30 - Texas Hold 'Em*</u> 12:30 - Chair Yoga* 5:30 - Dinner* 6:30 - Cards*</p>	<p>24</p> <p>11:00 - Lunch Bunch* 12:30 - Cards*</p>	<p>25</p>
<p>26</p> <p>6:30 - Cards*</p>	<p>27</p> <p>11:00 - Lunch Bunch* 12:00 - Craft Class - Macramé* 12:30 - Chair Yoga*</p>	<p>28</p> <p>11:00 - Lunch Bunch* (12:00 - Lunch - Ft Recovery Library*) 12:30 - Bridge* 12:45 - Line Dancing</p>	<p>29</p> <p>11:00 - Lunch Bunch* (12:00 - Lunch - Shrine - Maria Stein*) 12:30 - Bingo*</p>	<p>30</p> <p>11:00 - Lunch Bunch* (12:00 - Lunch - The Gardens of St Henry*) 1:230 - Chair Yoga* 5:30 - Dinner* 6:30 - Cards*</p>	<p>31</p> <p>11:00 - Lunch Bunch* 12:30 - Cards*</p>	

January 2020

Lunch is served at 11 am
\$3.00 donation
Thursday Dinner - served at 5:30 pm
\$5.00 donation

Reservations are required
by NOON one work day
prior to the meal.
Call 419-586-1644

Senior Citizens Center, 217 Riley, Celina

Monday	Tuesday	Wednesday	Thursday	Friday
Note: Menu items are subject to change.		1 OFFICES CLOSED HAPPY NEW YEAR'S	2 Lunch Beef Marzetti Green Beans Garlic bread PB cookie	3 Dinner Chili/Crackers Peanut Butter Shredded Cheese/Onion Sweet Treat
6 Shredded beef on Bun Potato triangle Pears	7 Ham & Bean Soup Cottage cheese salad Cornbread Peaches	8 Sloppy Joe on bun Crispy Cubes Cookie	9 Lunch Rueben Sandwich Spudsters Chilled fruit cocktail	10 Dinner Creamed Chicken & Peas Casserole Baked Potato/Butter & Sour Cream / Salad Sweet Treat
13 Cheesy Cavatappi Stewed Tomatoes Dinner Roll Ice Cream	14 Vegetable Soup Saltines Hot Ham & Swiss on Bun Peaches	15 6 oz SOS (chipped beef) Biscuit Green Beans Molasses Cookie	16 Lunch Taco Salad Tortilla strips Refried Beans Salsa/Sour Cream 3 Cream Puffs	17 Dinner Beef Stew/Mashed Potato Corn/Roll & Butter Sweet Treat
20 Butternut Squash Soup / crackers Roasted Turkey Sandwich Mandarin Oranges	21 Cabbage Roll Mashed potatoes Tomato sauce Scotcheroo	22 Pork Fritter Sandwich Tator Tots Pineapple	23 Lunch Chicken Bacon Ranch Pizza Tossed Salad Dressing choice Pineapple	24 Dinner Goulash/Garlic Bread Salad Green Beans Sweet Treat
27 Two Stuffed Shells Marinara Plain Bread Stick Broccoli Peaches	28 Cheeseburger on Bun Potato Triangles Pears	29 Bratwurst Mashed Potatoes Sauerkraut Wheat Bread Cranberry Velvet	30 Lunch Beef Stew Biscuit Grapes	31 Dinner Ham Loaf/Sweet Potato Baked Beans Roll & Butter Sweet Treat

Remote Sites

Fort Recovery Public Library

113 N Wayne Street
Fort Recovery, OH 45846

Serving 2nd & 4th Tuesdays
at noon - \$3.00 donation

January 14 - IGA

Beef & Noodles
Mashed Potatoes
Corn
Dessert

January 28 - IGA

Casing Sausage
Kraut
Cheesy Potatoes
Dessert

Maria Stein Shrine of the Holy Relics

2291 Saint Johns Road
Maria Stein, OH 45860

Serving every Wednesday at
noon
\$3.00 donation



THE GARDENS

ST. HENRY, OHIO at St. Henry
419-678-9800

522 Western Avenue
St Henry, OH 45883
419-678-9800

Every Thursday
\$3.00 donation

January 2

Spaghetti
Green Beans
Tossed Salad
Dinner Roll
Ice Cream

January 9

Country Fried Steak
White Pepper Gravy
Au Gratin Potatoes
Prince Charles Veggie
Blend
Apple Crisp

Meals are served at noon in the community room. Please call **419-678-9800** at least 24 hours in advance. Seating is limited to 20.

January 16

Roast Beef/Brown Gravy
Baked Potato
Cauliflower
Frozen Peanut Butter Bars

January 23

Meatloaf
Mashed Potatoes/Gravy
Sugar Snap Peas
Brownie

January 30

BBQ Pork Ribette
Scalloped Potatoes
Green Beans
Cherry Pie

Building Expansion Update

There has been a lot of talk (and some newspaper coverage) about building expansion plans at MCCoA. This article is to confirm that we are moving forward with Phase One. We have already broken ground and poured concrete for a dedicated Garage Sale Building. What this means is that sometime in the near future, we will move the garage sale out of the main building into the structure currently being built next to the six-bay garage. In doing so we will be able to continue all of our activities including bingo and cards while the Garage Sale is in full-swing. Meals will remain in the main building instead of moving to the Annex. Garage Sale set-up will be more efficient and the display of items will be more organized and easily accessible by our shoppers. Phase Two will be the expansion of the main building. There is not much more information than that as there is a lot of work behind the scenes that must take place before we move forward. As soon as information is available we will share it.



New Year's Day

The words listed below can be found vertically, horizontally, diagonally, forward, and backward.

BEGINNING
CALENDAR
CELEBRATION
CONFETTI
FIRST
FOOTBALL
FUN
JANUARY
MIDNIGHT

NEW
NOISEMAKERS
PARADE
PARTY
REFLECTION
RESOLUTIONS
ROSES
TIME
TRADITION

M	R	T	I	M	E	Y	W	J	Q	S	J	C	J	R
I	B	E	E	D	A	R	A	P	R	X	S	K	D	Z
D	N	U	F	P	Y	N	T	E	S	E	E	T	W	C
N	J	Z	N	L	U	K	K	S	S	C	R	N	K	Y
I	N	Q	D	A	E	A	C	O	R	A	X	O	B	T
G	E	T	R	D	M	C	R	J	D	I	Q	I	E	R
H	W	Y	G	E	T	A	T	I	G	X	F	T	G	A
T	R	E	S	O	L	U	T	I	O	N	S	A	I	P
N	Y	I	D	L	P	I	T	T	O	P	S	R	N	B
V	O	M	Z	S	O	T	B	T	S	N	H	B	N	X
N	B	A	K	N	Z	V	U	E	S	U	J	E	I	G
F	O	O	T	B	A	L	L	F	H	M	N	L	N	R
P	M	L	I	D	R	P	A	N	Y	T	B	E	G	W
R	A	D	N	E	L	A	C	O	A	T	L	C	O	S
U	J	T	H	Z	H	U	Y	C	W	J	T	W	Z	U

Outreach Reachin' Out:

DON'T BE COLD THIS WINTER.....



HEAP Winter Crisis Program

The Home Energy Assistance Winter Crisis Program (HEAP Winter Crisis Program) helps income eligible

Ohioans that are threatened with disconnection, have been disconnected or have less than a 25 percent supply of bulk fuel in their tank maintain their utility service. This is for renters and homeowners alike.

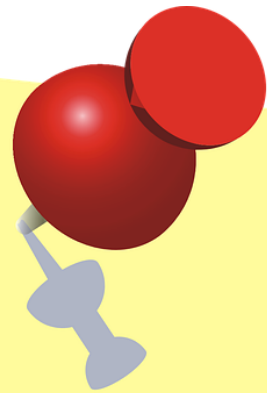


The program runs from November 1 until March 31.

Income eligibility is 135% of poverty level, which equates to:

Single Person: \$1,821 per month

Couple: \$2,466 per month



For more information on the Winter Crisis Program see:

https://development.ohio.gov/is/is_heapwinter.htm

Or to make an appointment call 1-855-286-7559

or go to capappointments.com for an appointment for:

West Ohio CAP

420 N. Brandon Avenue

Celina, OH

(419) 227-2586

WALK-INS SIGN IN AT 8:00 AM

REMINDER:

If you enrolled into a Medicare Advantage plan during Medicare Open Enrollment there is a **Medicare Advantage Open Enrollment Period (MA OEP)** from **January 1—March 31** where anyone in a Medicare Advantage Plan can switch to another Medicare Advantage Plan or return to Original Medicare.

Return Service Requested

January 2020

The Mercer County Council on Aging is a non-profit organization serving the needs of residents aged 60 and over. We offer a variety of services and programs designed to assist our seniors in maintaining as much independence as possible.

Funding for these services is provided by a county-wide levy, the Mercer County Health Fund, the Mercer County Civic Foundation, the PASSPORT program, Combined Drives, quarterly garage sales, client donations and the hard work of our volunteers.

Office Hours
Monday through Friday
8:00 am to 4:30 pm
419-586-1644

The MCCoA serves clients without regard to race, color, national origin, religion, sex, or disability. We are an equal opportunity employer.

Find us at www.mcco.net

To reduce unnecessary postal costs, please let us know if you are going to be moving, going out of town for an extended period, or no longer wish to receive the newsletter. We also have the ability to email newsletters. Thank you.

February 2020

Sunday	Monday	Tuesday	Wednesday	Thursday	Friday	Saturday
<p><i>Italicized and underlined</i> activities are held in the Annex.</p> <p>Activities marked with an * have a fee.</p> <p>Activities marked with () are off campus.</p>						<p>1</p> <p style="color: green;">Jewelry Making Class - Cassie McMurray???</p>
<p>2</p> <p style="color: red;">6:30 - Cards*</p>	<p>3</p> <p>11:00 - Lunch Bunch*</p> <p>11:30 - Lunch Bunch Craft - _____</p> <p style="color: purple;">12:30 - Chair Yoga*</p>	<p>4</p> <p>11:00 - Lunch Bunch*</p> <p>(11:30 - Lunch - New Shane Hall - Rockford*)</p> <p style="color: red;">12:30 - Bridge*</p> <p style="color: purple;">12:45 - Line Dancing</p>	<p>5</p> <p>11:00 - Lunch Bunch*</p> <p>(12:00 - Lunch - Shrine - Maria Stein*)</p> <p style="color: blue;">12:30 - Bingo*</p> <p><u>1:00 - Chat with Linda Pollitz - Alzheimer's</u></p> <p>4:30 - Staff Meeting</p>	<p>6</p> <p>11:00 - Lunch Bunch*</p> <p>12:30 - Craft Class - Ribbon Weaving Hearts \$2</p> <p style="color: purple;">12:30 - Chair Yoga*</p> <p>5:30 - Dinner*</p> <p style="color: red;">6:30 - Cards*</p>	<p>7</p> <p>11:00 - Lunch Bunch*</p>	<p>8</p> <p style="color: green;">9:00 TO 1:00 - Garage Sale Donations Accepted</p>
<p>9</p> <p style="color: red;">6:30 - Cards*</p>	<p>10</p> <p>11:00 - Lunch Bunch*</p> <p>12:00 - Art Class*</p> <p style="color: purple;">12:30 - Chair Yoga*</p> <p style="color: green;">8:30 TO 4:00 - Garage Sale Donations Accepted</p>	<p>11</p> <p>11:00 - Lunch Bunch*</p> <p>(12:00 - Lunch - Ft Recovery Library*)</p> <p style="color: red;">12:30 - Bridge*</p> <p style="color: purple;">12:45 - Line Dancing</p> <p style="color: green;">8:30 TO 4:00 - Garage Sale Donations</p>	<p>12</p> <p>10:30 Neighborhood Nurse BP & Glucose Testing</p> <p>11:00 - Lunch Bunch*</p> <p>(12:00 - Lunch - Shrine - Maria Stein*)</p> <p style="color: blue;">12:30 - Bingo*</p> <p><u>1:00 - Toe Nail Trimming*</u></p> <p style="color: green;">8:30 TO 4:00 - Garage Sale Donations Accepted</p>	<p>13</p> <p>11:00 - Lunch Bunch*</p> <p><u>1:00 - Board Mtg</u></p> <p style="color: purple;">12:30 - Chair Yoga*</p> <p>5:30 - Dinner*</p> <p style="color: red;">6:30 - Cards*</p> <p style="color: green;">8:30 TO 4:00 - Garage Sale Donations Accepted</p>	<p>14</p> <p>VALENTINES DAY</p> <p><u>8:00 - All Day Quilt Group</u></p> <p>11:00 - Lunch Bunch*</p> <p style="color: red;">12:30 - Cards*</p> <p style="color: green;">8:30 TO 4:00 - Garage Sale Donations Accepted</p>	<p>15</p> <p style="color: green;">9:00 TO 1:00 - Garage Sale Donations Accepted</p>
<p>16</p> <p style="color: red;">6:30 - Cards*</p>	<p>17</p> <p>PRESIDENTS DAY</p> <p><u>9:30 - Label Newsletter</u></p> <p><u>11:00 - Lunch Bunch*</u></p> <p style="color: purple;">12:30 - Chair Yoga*</p> <p>Chore Set Up</p>	<p>18</p> <p><u>11:00 - Lunch Bunch*</u></p> <p style="color: red;">12:30 - Bridge*</p> <p style="color: green;">Garage Sale Set Up</p>	<p>19</p> <p><u>11:00 - Lunch Bunch*</u></p> <p>(12:00 - Lunch - Shrine - Maria Stein*)</p> <p style="color: blue;">12:45 - Line Dancing</p> <p style="color: green;">Garage Sale Set Up</p>	<p>20</p> <p><u>11:00 - Lunch Bunch*</u></p> <p style="color: purple;">12:30 - Chair Yoga*</p> <p><u>5:30 - Dinner*</u></p> <p style="color: red;">6:30 - Cards*</p> <p style="color: green;">Garage Sale Set Up</p>	<p>21</p> <p>(10:00 Alzheimer's Support Group - Mercer Health - Luken Room)</p> <p><u>11:00 - Lunch Bunch*</u></p> <p style="color: red;">12:30 - Bridge*</p> <p style="color: green;">Garage Sale Set Up</p>	<p>22</p>
<p>23</p> <p style="color: red;">6:30 - Cards*</p>	<p>24</p> <p><u>11:00 - Lunch Bunch*</u></p> <p style="color: purple;">12:30 - Chair Yoga*</p> <p style="color: green;">Garage Sale Set Up</p>	<p>25</p> <p><u>11:00 - Lunch Bunch*</u></p> <p>(12:00 - Lunch - Ft Recovery Library*)</p> <p style="color: red;">12:30 - Bridge*</p> <p style="color: green;">Garage Sale Set Up</p>	<p>26</p> <p>ASH WEDNESDAY</p> <p><u>11:00 - Lunch Bunch* (NO MEAT)</u></p> <p>(12:00 - Lunch - Shrine - Maria Stein*)</p> <p style="color: blue;">12:45 - Line Dancing</p> <p style="color: green;">Garage Sale Set Up</p>	<p>27</p> <p>11:00 - Lunch Bunch*</p> <p><u>12:30 - Texas Hold 'Em*</u></p> <p><u>5:30 - Dinner*</u></p> <p style="color: red;">6:30 - Cards*</p> <p style="color: green;">8:30 to 6:30 GARAGE SALE</p>	<p>28</p> <p>LENT - NO MEAT</p> <p><u>11:00 - Lunch Bunch*</u></p> <p style="color: red;">12:30 - Bridge*</p> <p style="color: green;">8:30 to 4:00 GARAGE SALE</p>	<p>29</p> <p style="color: green;">9:30 to 4:00 GARAGE SALE</p>

March 2020

Sunday	Monday	Tuesday	Wednesday	Thursday	Friday	Saturday
1 <u>6:30 - Cards*</u> 9:30 to 4:00 GARAGE SALE	2 <u>11:00 - Lunch Bunch*</u> <u>12:30 - Chair Yoga*</u> 8:30 to 4:00 GARAGE SALE	3 <u>11:00 - Lunch Bunch*</u> (11:30 - Lunch - New Shane Hall - Rockford*) <u>12:30 - Bridge*</u> 12:45 - Line Dancing Garage Sale Clean Up	4 11:00 - Lunch Bunch* (12:00 - Lunch - Shrine - Maria Stein*) 12:30 - Bingo* 1:00 - Chat with Linda <u>Pollitz - Alzheimer's</u> 4:30 - Staff Meeting	5 11:00 - Lunch Bunch* <u>12:30 - Chair Yoga*</u> 5:30 - Dinner* 6:30 - Cards*	6 LENT - NO MEAT 11:00 - Lunch Bunch*	7
8 <u>TIME CHANGE</u> <u>6:30 - Cards*</u>	9 11:00 - Lunch Bunch* <u>12:30 - Chair Yoga*</u> 3:00 - Sunshine Singers Practice	10 11:00 - Lunch Bunch* (12:00 - Lunch - Ft Recovery Library*) <u>12:30 - Bridge*</u> 12:45 - Line Dancing	11 10:30 Neighborhood Nurse BP & Glucose Testing 11:00 - Lunch Bunch* (12:00 - Lunch - Shrine - Maria Stein*) 12:30 - Bingo* 1:00 - Toe Nail Trimming*	12 11:00 - Lunch Bunch* <u>1:00 - Board Mtg</u> <u>12:30 - Chair Yoga*</u> 5:30 - Dinner* 6:30 - Cards*	13 LENT - NO MEAT 11:00 - Lunch Bunch*	14
15 PALM SUNDAY <u>6:30 - Cards*</u>	16 9:30 - Label Newsletter 11:00 - Lunch Bunch* <u>12:30 - Chair Yoga*</u> 12:30 - Craft Class - Let's Flamingle FREE 3:00 - Sunshine Singers Practice	17 ST PATTYS DAY 11:00 - Lunch Bunch* <u>12:30 - Bridge*</u> 12:45 - Line Dancing	18 11:00 - Lunch Bunch* (12:00 - Lunch - Shrine - Maria Stein*) 12:30 - Bingo*	19 <u>1ST DAY SPRING</u> <u>8:00 - All Day Quilt Group</u> 11:00 - Lunch Bunch* <u>12:30 - Chair Yoga*</u> 5:30 - Dinner* 6:30 - Cards*	20 LENT - NO MEAT (10:00 Alzheimer's Support Group - Mercer Health - Luken Room) 11:00 - Lunch Bunch* 12:30 - Cards*	21
22 6:30 - Cards*	23 11:00 - Lunch Bunch* <u>12:30 - Chair Yoga*</u> 3:00 - Sunshine Singers Practice	24 SPRING CARRY IN "Let's Flamingle" <u>12:30 - Bridge*</u>	25 11:00 - Lunch Bunch* (12:00 - Lunch - Shrine - Maria Stein*) 12:30 - Bingo*	26 11:00 - Lunch Bunch* <u>12:30 - Texas Hold 'Em*</u> <u>12:30 - Chair Yoga*</u> 5:30 - Dinner* 6:30 - Cards*	27 LENT - NO MEAT 11:00 - Lunch Bunch* 12:30 - Cards*	28
29 6:30 - Cards*	30 11:00 - Lunch Bunch* 11:30 - Lunch Bunch Craft - <u>12:30 - Chair Yoga*</u> 3:00 - Sunshine	31 11:00 - Lunch Bunch* <u>12:30 - Bridge*</u> 12:45 - Line Dancing <u>5:30 to 7:30 - MOB - Week 1</u>	SOUP OFF???? <u>Italicized and underlined</u> activities are held in the Annex. Activities marked with an * have a fee. Activities marked with () are off campus.			

April 2020

Sunday	Monday	Tuesday	Wednesday	Thursday	Friday	Saturday
<p><i>Italicized and underlined</i> activities are held in the Annex.</p> <p>Activities marked with an * have a fee.</p> <p>Activities marked with () are off campus.</p>			<p>1</p> <p>9:00 - Garage Sale Volunteer Meeting</p> <p>11:00 - Lunch Bunch* (12:00 - Lunch - Shrine - Maria Stein*)</p> <p>12:30 - Bingo*</p> <p>1:00 - Chat with Linda Pollitz - Alzheimer's</p> <p>4:30 - Staff Meeting</p>	<p>2</p> <p>11:00 - Lunch Bunch*</p> <p>12:30 - Chair Yoga*</p> <p>2:00 - Garage Sale Volunteer Meeting</p> <p>5:30 - Dinner*</p> <p>6:30 - Cards*</p>	<p>3</p> <p>LENT - NO MEAT</p> <p>11:00 - Lunch Bunch*</p>	<p>4</p>
<p>5</p> <p>6:30 - Cards*</p>	<p>6</p> <p>11:00 - Lunch Bunch*</p> <p>12:30 - Chair Yoga*</p> <p>12:30 - Craft Class - Decorating Easter Cookies - 6 cookies/\$5</p> <p>2:00 - Sunshine Singers Practice</p>	<p>7</p> <p>11:00 - Lunch Bunch* (11:30 - Lunch - New Shane Hall - Rockford*)</p> <p>12:30 - Bridge*</p> <p>12:45 - Line Dancing</p> <p>5:30 to 7:30 - MOB - Week 2</p>	<p>8</p> <p>10:30 Neighborhood Nurse BP & Glucose Testing</p> <p>11:00 - Lunch Bunch* (12:00 - Lunch - Shrine - Maria Stein*)</p> <p>12:30 - Bingo*</p> <p>1:00 - Toe Nail Trimming*</p>	<p>9</p> <p>11:00 - Lunch Bunch*</p> <p>12:30 - Chair Yoga*</p> <p>1:00 - Board Mtg</p> <p>5:30 - Dinner*</p> <p>6:30 - Cards*</p>	<p>10</p> <p>OFFICES CLOSED</p> <p>HAPPY EASTER</p>	<p>11</p>
<p>12</p> <p>EASTER SUNDAY</p> <p>6:30 - Cards*</p>	<p>13</p> <p>11:00 - Lunch Bunch*</p> <p>12:30 - Chair Yoga*</p> <p>3:00 - Sunshine Singers Practice</p>	<p>14</p> <p>11:00 - Lunch Bunch* (12:00 - Lunch - Ft Recovery Library*)</p> <p>12:30 - Bridge*</p> <p>12:45 - Line Dancing</p> <p>5:30 to 7:30 - MOB - Week 3</p>	<p>15</p> <p>11:00 - Lunch Bunch* (12:00 - Lunch - Shrine - Maria Stein*)</p> <p>12:30 - Bingo*</p>	<p>16</p> <p>8:00 - All Day Quilt Group</p> <p>11:00 - Lunch Bunch*</p> <p>12:30 - Chair Yoga*</p> <p>5:30 - Dinner*</p> <p>6:30 - Cards*</p>	<p>17</p> <p>(10:00 Alzheimer's Support Group - Mercer Health - Luken Room)</p> <p>11:00 - Lunch Bunch*</p> <p>12:30 - Cards*</p>	<p>18</p>
<p>19</p> <p>6:30 - Cards*</p>	<p>20</p> <p>9:30 - Label Newsletter</p> <p>11:00 - Lunch Bunch*</p> <p>11:30 - Lunch Bunch Craft -</p> <p>12:30 - Chair Yoga*</p> <p>3:00 - Sunshine Singers Practice</p>	<p>21</p> <p>11:00 - Lunch Bunch*</p> <p>12:30 - Bridge*</p> <p>12:45 - Line Dancing</p> <p>5:30 to 7:30 - MOB - Week 4</p>	<p>22</p> <p>11:00 - Lunch Bunch* (12:00 - Lunch - Shrine - Maria Stein*)</p> <p>12:30 - Bingo*</p>	<p>23</p> <p>11:00 - Lunch Bunch*</p> <p>12:30 - Texas Hold 'Em*</p> <p>12:30 - Chair Yoga*</p> <p>5:30 - Dinner*</p> <p>6:30 - Cards*</p>	<p>24</p> <p>11:00 - Lunch Bunch*</p> <p>12:30 - Cards*</p>	<p>25</p> <p>9:00 TO 1:00 - Garage Sale Donations Accepted</p>
<p>26</p> <p>6:30 - Cards*</p>	<p>27</p> <p>11:00 - Lunch Bunch*</p> <p>3:00 - Sunshine Singers Practice</p> <p>12:30 - Chair Yoga*</p> <p>8:30 TO 4:00 - Garage Sale Donations Accepted</p>	<p>28</p> <p>11:00 - Lunch Bunch* (12:00 - Lunch - Ft Recovery Library*)</p> <p>12:30 - Bridge*</p> <p>12:45 - Line Dancing</p> <p>8:30 TO 4:00 - Garage Sale Donations Accepted</p> <p>5:30 to 7:30 - MOB - Week 5</p>	<p>29</p> <p>11:00 - Lunch Bunch* (12:00 - Lunch - Shrine - Maria Stein*)</p> <p>12:30 - Bingo*</p> <p>8:30 TO 4:00 - Garage Sale Donations Accepted</p>	<p>30</p> <p>11:00 - Lunch Bunch*</p> <p>12:30 - Chair Yoga*</p> <p>5:30 - Dinner*</p> <p>6:30 - Cards*</p> <p>8:30 TO 4:00 - Garage Sale Donations Accepted</p>		

May 2020

Sunday	Monday	Tuesday	Wednesday	Thursday	Friday	Saturday
<p><i>Italicized and underlined</i> activities are held in the Annex.</p> <p>Activities marked with an * have a fee.</p> <p>Activities marked with () are off campus.</p>					<p>1</p> <p>11:00 - Lunch Bunch*</p> <p>8:30 TO 4:00 - Garage Sale Donations Accepted</p>	<p>2</p> <p>9:00 TO 1:00 - Garage Sale Donations Accepted</p>
<p>3</p> <p><u>6:30 - Cards*</u></p>	<p>4</p> <p><u>11:00 - Lunch Bunch*</u></p> <p><u>12:30 - Chair Yoga*</u></p> <p>2:00 - Sunshine Singers Practice</p> <p>CHORE SET UP</p>	<p>5</p> <p><u>11:00 - Lunch Bunch*</u></p> <p>(11:30 - Lunch - New Shane Hall - Rockford*)</p> <p><u>12:30 - Bridge*</u></p> <p><u>5:30 to 7:30 - MOB - Week 6</u></p> <p>Garage Sale Set Up</p>	<p>6</p> <p><u>11:00 - Lunch Bunch*</u></p> <p>(12:00 - Lunch - Shrine - Maria Stein*)</p> <p><u>12:45 - Line Dancing</u></p> <p>1:00 - Chat with Linda Pollitz - Alzheimer's</p> <p>Garage Sale Set Up</p> <p>4:30 - Staff Meeting</p>	<p>7</p> <p><u>11:00 - Lunch Bunch*</u></p> <p><u>12:30 - Chair Yoga*</u></p> <p><u>5:30 - Dinner*</u></p> <p><u>6:30 - Cards*</u></p> <p>Garage Sale Set Up</p>	<p>8</p> <p><u>11:00 - Lunch Bunch*</u></p> <p><u>12:30 - Bridge*</u></p> <p>Garage Sale Set Up</p>	<p>9</p>
<p>10</p> <p>MOTHERS DAY</p> <p><u>6:30 - Cards*</u></p>	<p>11</p> <p><u>11:00 - Lunch Bunch*</u></p> <p><u>12:30 - Chair Yoga*</u></p> <p>3:00 - Sunshine Singers Practice</p> <p>Garage Sale Set Up</p>	<p>12</p> <p><u>11:00 - Lunch Bunch*</u></p> <p>(12:00 - Lunch - Ft Recovery Library*)</p> <p><u>12:30 - Bridge*</u></p> <p><u>5:30 to 7:30 - MOB - Week 7</u></p> <p>Garage Sale Set Up</p>	<p>13</p> <p><u>10:30 Neighborhood Nurse BP & Glucose Testing</u></p> <p><u>11:00 - Lunch Bunch*</u></p> <p>(12:00 - Lunch - Shrine - Maria Stein*)</p> <p><u>12:45 - Line Dancing</u></p> <p><u>1:00 - Toe Nail Trimming*</u></p> <p>Garage Sale Set Up</p>	<p>14</p> <p><u>11:00 - Lunch Bunch*</u></p> <p><u>1:00 - Board Mtg</u></p> <p><u>5:30 - Dinner*</u></p> <p><u>6:30 - Cards*</u></p> <p>8:30 to 6:30 GARAGE SALE</p>	<p>15</p> <p>(10:00 Alzheimer's Support Group - Mercer Health - Luken Room)</p> <p><u>11:00 - Lunch Bunch*</u></p> <p><u>12:30 - Bridge*</u></p> <p>8:30 to 4:00 GARAGE SALE</p>	<p>16</p> <p>9:30 to 4:00 GARAGE SALE</p>
<p>17</p> <p><u>6:30 - Cards*</u></p> <p>9:30 to 4:00 GARAGE SALE</p>	<p>18</p> <p><u>9:30 - Label Newsletter</u></p> <p><u>11:00 - Lunch Bunch*</u></p> <p><u>12:30 - Chair Yoga*</u></p> <p>3:00 - Sunshine Singers Practice</p> <p>8:30 to 4:00 GARAGE SALE</p>	<p>19</p> <p><u>11:00 - Lunch Bunch*</u></p> <p><u>12:30 - Bridge*</u></p> <p><u>12:45 - Line Dancing</u></p> <p><u>5:30 to 7:30 - MOB - Week 8</u></p> <p>Garage Sale Clean Up</p>	<p>20</p> <p>11:00 - Lunch Bunch*</p> <p>(12:00 - Lunch - Shrine - Maria Stein*)</p> <p><u>12:30 - Bingo*</u></p>	<p>21</p> <p><u>8:00 - All Day Quilt Group</u></p> <p>11:00 - Lunch Bunch*</p> <p><u>12:30 - Chair Yoga*</u></p> <p>5:30 - Dinner*</p> <p><u>6:30 - Cards*</u></p>	<p>22</p> <p>11:00 - Lunch Bunch*</p> <p><u>12:30 - Cards*</u></p>	<p>23</p>
<p>24</p> <p><u>6:30 - Cards*</u></p>	<p>25</p> <p>OFFICES CLOSED</p> <p>MEMORIAL DAY</p>	<p>26</p> <p>11:00 - Lunch Bunch*</p> <p>(12:00 - Lunch - Ft Recovery Library*)</p> <p><u>12:30 - Bridge*</u></p> <p><u>12:45 - Line Dancing</u></p>	<p>27</p> <p>11:00 - Lunch Bunch*</p> <p>(12:00 - Lunch - Shrine - Maria Stein*)</p> <p><u>12:30 - Bingo*</u></p>	<p>28</p> <p>11:00 - Lunch Bunch*</p> <p><u>12:30 - Texas Hold 'Em*</u></p> <p><u>12:30 - Chair Yoga*</u></p> <p>5:30 - Dinner*</p> <p><u>6:30 - Cards*</u></p>	<p>29</p> <p>11:00 - Lunch Bunch*</p> <p><u>12:30 - Cards*</u></p>	<p>30</p>
<p>31</p> <p><u>6:30 - Cards*</u></p>						

June 2020

Sunday	Monday	Tuesday	Wednesday	Thursday	Friday	Saturday
	1	2	3	4	5	6
	11:00 - Lunch Bunch* 12:30 - Chair Yoga* 2:00 - Sunshine Singers Practice	11:00 - Lunch Bunch* (11:30 - Lunch - New Shane Hall - Rockford*) <u>12:30 - Bridge*</u> 12:45 - Line Dancing	11:00 - Lunch Bunch* (12:00 - Lunch - Shrine - Maria Stein*) 12:30 - Bingo* <u>1:00 - Chat with Linda Pollitz - Alzheimer's</u> 4:30 - Staff Meeting	11:00 - Lunch Bunch* 12:30 - Chair Yoga* 5:30 - Dinner* 6:30 - Cards*	11:00 - Lunch Bunch*	
7	8	9	10	11	12	13
6:30 - Cards*	11:00 - Lunch Bunch* 12:30 - Chair Yoga* 12:30 - Craft Class - Summer Olympics FREE 3:00 - Sunshine Singers Practice	11:00 - Lunch Bunch* (12:00 - Lunch - Ft Recovery Library*) <u>12:30 - Bridge*</u> 12:45 - Line Dancing	10:30 Neighborhood Nurse BP & Glucose Testing 11:00 - Lunch Bunch* (12:00 - Lunch - Shrine - Maria Stein*) 12:30 - Bingo* <u>1:00 - Toe Nail Trimming*</u>	11:00 - Lunch Bunch* <u>1:00 - Board Mtg</u> 12:30 - Chair Yoga* 5:30 - Dinner* 6:30 - Cards*	11:00 - Lunch Bunch*	
14	15	16	17	18	19	20
6:30 - Cards*	9:30 - Label Newsletter 11:00 - Lunch Bunch* 12:30 - Chair Yoga* 3:00 - Sunshine Singers Practice	<u>PARTY ON THE PATIO - Summer Olympics</u> 11:00 - Lunch Bunch*	11:00 - Lunch Bunch* (12:00 - Lunch - Shrine - Maria Stein*) 12:30 - Bingo*	??COUNTRY FEST?? <u>8:00 - All Day Quilt Group</u> 11:00 - Lunch Bunch* 12:30 - Chair Yoga* 5:30 - Dinner* 6:30 - Cards*	(10:00 Alzheimer's Support Group - Mercer Health - Luken Room) 11:00 - Lunch Bunch* 12:30 - Cards*	9:00 to 1:00 - Garage Sale Donations Accepted
21	22	23	24	25	26	27
FATHERS DAY 6:30 - Cards*	PUZZLE TOURNAMENT 11:00 - Lunch Bunch* 11:30 - Lunch Bunch Craft - _____ 12:30 - Chair Yoga* 3:00 - Sunshine Singers Practice 8:30 to 4:00 - Garage Sale Donations Accepted	<u>9:00 to 11:00 - MOB - Week 1</u> 11:00 - Lunch Bunch* (12:00 - Lunch - Ft Recovery Library*) <u>12:30 - Bridge*</u> 12:45 - Line Dancing 8:30 to 4:00 - Garage Sale Donations Accepted	11:00 - Lunch Bunch* (12:00 - Lunch - Shrine - Maria Stein*) 12:30 - Bingo* 8:30 to 4:00 - Garage Sale Donations Accepted	??COUNTRY FEST?? 11:00 - Lunch Bunch* <u>12:30 - Texas Hold 'Em*</u> 12:30 - Chair Yoga* 5:30 - Dinner* 6:30 - Cards* 8:30 to 4:00 - Garage Sale Donations Accepted	11:00 - Lunch Bunch* 12:30 - Cards* 8:30 to 4:00 - Garage Sale Donations Accepted	9:00 to 1:00 - Garage Sale Donations Accepted
28	29	30	<p><u>Italicized and underlined</u> activities are held in the Annex.</p> <p>Activities marked with an * have a fee.</p> <p>Activities marked with () are off campus.</p>			
6:30 - Cards*	<u>11:00 - Lunch Bunch*</u> 12:30 - Chair Yoga* 12:30 - Craft Class - Clothes Pin Wreaths \$4 3:00 - Sunshine Singers Practice	<u>9:00 to 11:00 - MOB - Week 2</u> 11:00 - Lunch Bunch* <u>12:30 - Bridge*</u> 12:45 - Line Dancing Garage Sale Set Up				

July 2020

Sunday	Monday	Tuesday	Wednesday	Thursday	Friday	Saturday
<p><i>Italicized and underlined</i> activities are held in the Annex.</p> <p>Activities marked with an * have a fee.</p> <p>Activities marked with () are off campus.</p>			<p>1</p> <p>11:00 - Lunch Bunch* (12:00 - Lunch - Shrine - Maria Stein*)</p> <p>12:30 - Bingo*</p> <p>1:00 - Chat with Linda Pollitz - Alzheimer's</p> <p>Garage Sale Set Up</p> <p>4:30 - Staff Meeting</p>	<p>2</p> <p>11:00 - Lunch Bunch*</p> <p>12:30 - Chair Yoga*</p> <p>5:30 - Dinner*</p> <p>6:30 - Cards*</p> <p>Garage Sale Set Up</p>	<p>3</p> <p>OFFICES CLOSED</p> <p>FORTH OF JULY</p>	<p>4</p>
<p>5</p> <p>6:30 - Cards*</p>	<p>6</p> <p>11:00 - Lunch Bunch*</p> <p>12:30 - Chair Yoga*</p> <p>2:00 - Sunshine Singers Practice</p> <p>Garage Sale Set Up</p>	<p>7</p> <p>9:00 to 11:00 - MOB - Week 3</p> <p>11:00 - Lunch Bunch* (11:30 - Lunch - New Shane Hall - Rockford*)</p> <p>12:30 - Bridge*</p> <p>12:45 - Line Dancing</p> <p>Garage Sale Set Up</p>	<p>8</p> <p>10:30 Neighborhood Nurse BP & Glucose Testing</p> <p>11:00 - Lunch Bunch* (12:00 - Lunch - Shrine - Maria Stein*)</p> <p>12:30 - Bingo*</p> <p>1:00 - Toe Nail Trimming*</p> <p>Garage Sale Set Up</p>	<p>9</p> <p>11:00 - Lunch Bunch*</p> <p>1:00 - Board Mtg</p> <p>12:30 - Chair Yoga*</p> <p>5:30 - Dinner*</p> <p>6:30 - Cards*</p> <p>8:30 to 6:30 GARAGE SALE</p>	<p>10</p> <p>11:00 - Lunch Bunch*</p> <p>8:30 to 4:00 GARAGE SALE</p>	<p>11</p> <p>9:30 to 4:00 GARAGE SALE</p>
<p>12</p> <p>6:30 - Cards*</p> <p>9:30 to 4:00 GARAGE SALE</p>	<p>13</p> <p>11:00 - Lunch Bunch*</p> <p>12:30 - Chair Yoga*</p> <p>3:00 - Sunshine Singers Practice</p> <p>8:30 to 4:00 GARAGE SALE</p>	<p>14</p> <p>9:00 to 11:00 - MOB - Week 4</p> <p>11:00 - Lunch Bunch* (12:00 - Lunch - Ft Recovery Library*)</p> <p>12:30 - Bridge*</p> <p>12:45 - Line Dancing</p> <p>(IC DONATIONS)</p> <p>Garage Sale Clean Up</p>	<p>15</p> <p>11:00 - Lunch Bunch* (12:00 - Lunch - Shrine - Maria Stein*)</p> <p>12:30 - Bingo*</p>	<p>16</p> <p>8:00 - All Day Quilt Group</p> <p>11:00 - Lunch Bunch*</p> <p>12:30 - Chair Yoga*</p> <p>5:30 - Dinner*</p> <p>6:30 - Cards*</p>	<p>17</p> <p>(10:00 Alzheimer's Support Group - Mercer Health - Luken Room)</p> <p>11:00 - Lunch Bunch*</p> <p>12:30 - Cards*</p>	<p>18</p>
<p>19</p> <p>6:30 - Cards*</p>	<p>20</p> <p>9:30 - Label Newsletter</p> <p>11:00 - Lunch Bunch*</p> <p>11:30 - Lunch Bunch Craft -</p> <p>12:30 - Chair Yoga*</p> <p>3:00 - Sunshine Singers Practice</p>	<p>21</p> <p>9:00 to 11:00 - MOB - Week 5</p> <p>11:00 - Lunch Bunch*</p> <p>12:30 - Bridge*</p> <p>12:45 - Line Dancing</p>	<p>22</p> <p>11:00 - Lunch Bunch* (12:00 - Lunch - Shrine - Maria Stein*)</p> <p>12:30 - Bingo*</p>	<p>23</p> <p>11:00 - Lunch Bunch*</p> <p>12:30 - Texas Hold Em*</p> <p>12:30 - Chair Yoga*</p> <p>5:30 - Dinner*</p> <p>6:30 - Cards*</p>	<p>24</p> <p>Lake Festival</p> <p>11:00 - Lunch Bunch*</p> <p>12:30 - Cards*</p>	<p>25</p> <p>Lake Festival</p> <p>PARADE</p>
<p>26</p> <p>Lake Festival</p> <p>6:30 - Cards*</p>	<p>27</p> <p>11:00 - Lunch Bunch*</p> <p>12:30 - Chair Yoga*</p> <p>3:00 - Sunshine Singers Practice</p>	<p>28</p> <p>9:00 to 11:00 - MOB - Week 6</p> <p>11:00 - Lunch Bunch* (12:00 - Lunch - Ft Recovery Library*)</p> <p>12:30 - Bridge*</p> <p>12:45 - Line Dancing</p>	<p>29</p> <p>11:00 - Lunch Bunch* (12:00 - Lunch - Shrine - Maria Stein*)</p> <p>12:30 - Bingo*</p>	<p>30</p> <p>11:00 - Lunch Bunch*</p> <p>12:30 - Craft Class - Cork Wreath \$5</p> <p>12:30 - Chair Yoga*</p> <p>5:30 - Dinner*</p> <p>6:30 - Cards*</p>	<p>31</p> <p>11:00 - Lunch Bunch*</p> <p>12:30 - Cards*</p>	

August 2020

Sunday	Monday	Tuesday	Wednesday	Thursday	Friday	Saturday
<p><i>Italicized and underlined</i> activities are held in the Annex.</p> <p>Activities marked with an * have a fee.</p> <p>Activities marked with () are off campus.</p>						1
2	3	4	5	6	7	8
<p><u>6:30 - Cards*</u></p>	<p>11:00 - Lunch Bunch*</p> <p>12:30 - Chair Yoga*</p> <p>2:00 - Sunshine Singers Practice</p>	<p><u>9:00 to 11:00 - MOB - Week 7</u></p> <p>11:00 - Lunch Bunch*</p> <p>(11:30 - Lunch - New Shane Hall - Rockford*)</p> <p><u>12:30 - Bridge*</u></p> <p>12:45 - Line Dancing</p>	<p>11:00 - Lunch Bunch*</p> <p>(12:00 - Lunch - Shrine - Maria Stein*)</p> <p>12:30 - Bingo*</p> <p>1:00 - Chat with Linda Pollitz - Alzheimer's</p> <p>4:30 - Staff Meeting</p>	<p>127 Sale</p> <p>11:00 - Lunch Bunch*</p> <p>12:30 - Craft Class - Book Art \$3</p> <p>12:30 - Chair Yoga*</p> <p>5:30 - Dinner*</p> <p>6:30 - Cards*</p>	<p>127 Sale</p> <p>11:00 - Lunch Bunch*</p>	<p>127 Sale</p>
9	10	11	12	13	14	15
<p>127 Sale</p> <p><u>6:30 - Cards*</u></p>	<p>11:00 - Lunch Bunch*</p> <p>11:30 - Lunch Bunch Craft - _____</p> <p>12:30 - Chair Yoga*</p> <p>3:00 - Sunshine Singers Practice</p>	<p><u>9:00 to 11:00 - MOB - Week 8</u></p> <p>11:00 - Lunch Bunch*</p> <p>(12:00 - Lunch - Ft Recovery Library*)</p> <p><u>12:30 - Bridge*</u></p> <p>12:45 - Line Dancing</p>	<p>10:30 Neighborhood Nurse BP & Glucose Testing</p> <p>11:00 - Lunch Bunch*</p> <p>(12:00 - Lunch - Shrine - Maria Stein*)</p> <p>12:30 - Bingo*</p> <p>1:00 - Toe Nail Trimming*</p>	<p>11:00 - Lunch Bunch*</p> <p>1:00 - Board Mtg</p> <p>12:30 - Chair Yoga*</p> <p>5:30 - Dinner*</p> <p>6:30 - Cards*</p>	<p>Fair</p> <p>11:00 - Lunch Bunch*</p> <p>12:30 - Cards*</p>	<p>Fair</p>
16	17	18	19	20	21	22
<p>Fair</p> <p>6:30 - Cards*</p>	<p>Fair</p> <p>9:30 - Label Newsletter</p> <p>11:00 - Lunch Bunch*</p> <p>12:30 - Chair Yoga*</p> <p>3:00 - Sunshine Singers Practice</p>	<p>SR DAY AT FAIR</p> <p>11:00 - Lunch Bunch*</p> <p><u>12:30 - Bridge*</u></p> <p>12:45 - Line Dancing</p>	<p>Fair</p> <p>11:00 - Lunch Bunch*</p> <p>(12:00 - Lunch - Shrine - Maria Stein*)</p> <p>12:30 - Bingo*</p>	<p>Fair</p> <p>8:00 - All Day Quilt Group</p> <p>11:00 - Lunch Bunch*</p> <p>5:30 - Dinner*</p> <p>6:30 - Cards*</p>	<p>(10:00 Alzheimer's Support Group - Mercer Health - Luken Room)</p> <p>11:00 - Lunch Bunch*</p> <p>12:30 - Cards*</p>	
23	24	25	26	27	28	29
<p>6:30 - Cards*</p>	<p>11:00 - Lunch Bunch*</p> <p>12:30 - Chair Yoga*</p> <p>3:00 - Sunshine Singers Practice</p>	<p>11:00 - Lunch Bunch*</p> <p>(12:00 - Lunch - Ft Recovery Library*)</p> <p><u>12:30 - Bridge*</u></p> <p>12:45 - Line Dancing</p>	<p>11:00 - Lunch Bunch*</p> <p>(12:00 - Lunch - Shrine - Maria Stein*)</p> <p>12:30 - Bingo*</p>	<p>11:00 - Lunch Bunch*</p> <p>12:30 - Texas Hold 'Em*</p> <p>12:30 - Chair Yoga*</p> <p>5:30 - Dinner*</p> <p>6:30 - Cards*</p>	<p>11:00 - Lunch Bunch*</p> <p>12:30 - Cards*</p>	
30	31					
<p>6:30 - Cards*</p>	<p>11:00 - Lunch Bunch*</p> <p>12:30 - Chair Yoga*</p> <p>3:00 - Sunshine Singers Practice</p>					<p>DESSERT OFF???</p>

September 2020

Sunday	Monday	Tuesday	Wednesday	Thursday	Friday	Saturday
		1	2	3	4	5
		11:00 - Lunch Bunch* (11:30 - Lunch - New Shane Hall - Rockford*) <u>12:30 - Bridge*</u> 12:45 - Line Dancing	11:00 - Lunch Bunch* (12:00 - Lunch - Shrine - Maria Stein*) 12:30 - Bingo* <u>1:00 - Chat with Linda Pollitz - Alzheimer's</u> 4:30 - Staff Meeting	11:00 - Lunch Bunch* <u>12:30 - Chair Yoga*</u> 5:30 - Dinner* 6:30 - Cards*	11:00 - Lunch Bunch*	
6 <u>6:30 - Cards*</u>	7 OFFICES CLOSED LABOR DAY	8	9	10	11	12 9:30 to 4:00 GARAGE SALE
		11:00 - Lunch Bunch* (12:00 - Lunch - Ft Recovery Library*) <u>12:30 - Bridge*</u> 12:45 - Line Dancing Garage Sale Set Up	10:30 Neighborhood Nurse BP & Glucose Testing 11:00 - Lunch Bunch* (12:00 - Lunch - Shrine - Maria Stein*) 12:30 - Bingo* <u>1:00 - Toe Nail Trimming*</u> Garage Sale Set Up	11:00 - Lunch Bunch* <u>1:00 - Board Mtg</u> <u>12:30 - Chair Yoga*</u> 5:30 - Dinner* 6:30 - Cards* 8:30 to 6:30 GARAGE SALE	11:00 - Lunch Bunch* 8:30 to 4:00 GARAGE SALE	
13 GRANDPARENTS DAY <u>6:30 - Cards*</u> 9:30 to 4:00 GARAGE SALE	14	15	16	17	18	19
	9:30 - Label Newsletter 11:00 - Lunch Bunch* <u>12:30 - Chair Yoga*</u> 3:00 - Sunshine Singers Practice 8:30 to 4:00 GARAGE SALE	11:00 - Lunch Bunch* <u>12:30 - Bridge*</u> 12:45 - Line Dancing Garage Sale Clean Up	11:00 - Lunch Bunch* (12:00 - Lunch - Shrine - Maria Stein*) 12:30 - Bingo*	<u>8:00 - All Day Quilt Group</u> 11:00 - Lunch Bunch* <u>12:30 - Chair Yoga*</u> 5:30 - Dinner* 6:30 - Cards*	(10:00 Alzheimer's Support Group - Mercer Health - Luken Room) 11:00 - Lunch Bunch* 12:30 - Cards*	
20 <u>6:30 - Cards*</u>	21	22	23	24	25	26
	11:00 - Lunch Bunch* <u>12:30 - Chair Yoga*</u> 3:00 - Sunshine Singers Practice	11:00 - Lunch Bunch* (12:00 - Lunch - Ft Recovery Library*) <u>12:30 - Bridge*</u> 12:45 - Line Dancing	9:00 - Craft Class - Wooden Spools \$??? 11:00 - Lunch Bunch* (12:00 - Lunch - Shrine - Maria Stein*) 12:30 - Bingo*	11:00 - Lunch Bunch* <u>12:30 - Texas Hold 'Em*</u> <u>12:30 - Chair Yoga*</u> 5:30 - Dinner* 6:30 - Cards*	11:00 - Lunch Bunch* 12:30 - Cards*	
27 <u>6:30 - Cards*</u>	28	29	30	<p><i>Italicized and underlined</i> activities are held in the Annex.</p> <p>Activities marked with an * have a fee.</p> <p>Activities marked with () are off campus.</p>		
	11:00 - Lunch Bunch* 11:30 - Lunch Bunch Craft - <u>12:30 - Chair Yoga*</u> 3:00 - Sunshine Singers Practice	11:00 - Lunch Bunch* <u>12:30 - Bridge*</u> 12:45 - Line Dancing	11:00 - Lunch Bunch* (12:00 - Lunch - Shrine - Maria Stein*) 12:30 - Bingo*			

October 2020

Sunday	Monday	Tuesday	Wednesday	Thursday	Friday	Saturday
<p><i>Italicized and underlined</i> activities are held in the Annex.</p> <p>Activities marked with an * have a fee.</p> <p>Activities marked with () are off campus.</p>				<p>1</p> <p>11:00 - Lunch Bunch*</p> <p><u>12:30 - Chair Yoga*</u></p> <p>5:30 - Dinner*</p> <p><u>6:30 - Cards*</u></p>	<p>2</p> <p>11:00 - Lunch Bunch*</p>	<p>3</p>
<p>4</p> <p><u>6:30 - Cards*</u></p>	<p>5</p> <p>11:00 - Lunch Bunch*</p> <p><u>12:30 - Chair Yoga*</u></p> <p>2:00 - Sunshine Singers Practice</p>	<p>6</p> <p>11:00 - Lunch Bunch*</p> <p>(11:30 - Lunch - New Shane Hall - Rockford*)</p> <p><u>12:30 - Bridge*</u></p> <p><u>12:45 - Line Dancing</u></p>	<p>7</p> <p>11:00 - Lunch Bunch*</p> <p>(12:00 - Lunch - Shrine - Maria Stein*)</p> <p><u>12:30 - Bingo*</u></p> <p><u>1:00 - Chat with Linda Pollitz - Alzheimer's</u></p> <p><u>4:30 - Staff Meeting</u></p>	<p>8</p> <p>11:00 - Lunch Bunch*</p> <p><u>1:00 - Board Mtg</u></p> <p><u>12:30 - Chair Yoga*</u></p> <p>5:30 - Dinner*</p> <p><u>6:30 - Cards*</u></p>	<p>9</p> <p>11:00 - Lunch Bunch*</p>	<p>10</p>
<p>11</p> <p><u>6:30 - Cards*</u></p>	<p>12</p> <p>OFFICES CLOSED</p> <p>STAFF TRAINING</p>	<p>13</p> <p>11:00 - Lunch Bunch*</p> <p>(12:00 - Lunch - Ft Recovery Library*)</p> <p><u>12:30 - Bridge*</u></p> <p><u>12:45 - Line Dancing</u></p>	<p>14</p> <p>10:30 Neighborhood Nurse BP & Glucose Testing</p> <p>11:00 - Lunch Bunch*</p> <p>11:30 - Lunch Bunch Craft W BINGO -</p> <p>(12:00 - Lunch - Shrine - Maria Stein*)</p> <p><u>12:30 - Bingo*</u></p> <p><u>1:00 - Toe Nail Trimming*</u></p>	<p>15</p> <p><u>8:00 - All Day Quilt Group</u></p> <p>11:00 - Lunch Bunch*</p> <p><u>12:30 - Chair Yoga*</u></p> <p>5:30 - Dinner*</p> <p><u>6:30 - Cards*</u></p>	<p>16</p> <p>BOSS'S DAY</p> <p>(10:00 Alzheimer's Support Group - Mercer Health - Luken Room)</p> <p>11:00 - Lunch Bunch*</p> <p><u>12:30 - Cards*</u></p>	<p>17</p>
<p>18</p> <p><u>6:30 - Cards*</u></p>	<p>19</p> <p>9:30 - Label Newsletter</p> <p>11:00 - Lunch Bunch*</p> <p>12:30 - Craft Class - Stamp Class (Vol App) FREE</p> <p><u>12:30 - Chair Yoga*</u></p> <p>3:00 - Sunshine Singers Practice</p>	<p>20</p> <p>11:00 - Lunch Bunch*</p> <p><u>12:30 - Bridge*</u></p> <p><u>12:45 - Line Dancing</u></p>	<p>21</p> <p>11:00 - Lunch Bunch*</p> <p>(12:00 - Lunch - Shrine - Maria Stein*)</p> <p><u>12:30 - Bingo*</u></p>	<p>22</p> <p>11:00 - Lunch Bunch*</p> <p><u>12:30 - Texas Hold Em*</u></p> <p><u>12:30 - Chair Yoga*</u></p> <p>5:30 - Dinner*</p> <p><u>6:30 - Cards*</u></p>	<p>23</p> <p>11:00 - Lunch Bunch*</p> <p><u>12:30 - Cards*</u></p>	<p>24</p> <p>9:00 TO 1:00 - Garage Sale Donations Accepted</p>
<p>25</p> <p><u>6:30 - Cards*</u></p>	<p>26</p> <p>VOLUNTEER APPRECAIATION DINNER</p> <p>11:00 - Lunch Bunch*</p> <p><u>12:30 - Chair Yoga*</u></p> <p>3:00 - Sunshine Singers Practice</p> <p>8:30 TO 4:00 - Garage Sale Donations Accepted</p>	<p>27</p> <p>11:00 - Lunch Bunch*</p> <p>(12:00 - Lunch - Ft Recovery Library*)</p> <p><u>12:30 - Bridge*</u></p> <p><u>12:45 - Line Dancing</u></p> <p>8:30 TO 4:00 - Garage Sale Donations Accepted</p>	<p>28</p> <p>11:00 - Lunch Bunch*</p> <p>(12:00 - Lunch - Shrine - Maria Stein*)</p> <p><u>12:30 - Bingo*</u></p> <p>8:30 TO 4:00 - Garage Sale Donations Accepted</p>	<p>29</p> <p>11:00 - Lunch Bunch*</p> <p><u>12:30 - Chair Yoga*</u></p> <p>5:30 - Dinner*</p> <p><u>6:30 - Cards*</u></p> <p>8:30 TO 4:00 - Garage Sale Donations Accepted</p>	<p>30</p> <p>11:00 - Lunch Bunch*</p> <p><u>12:30 - Cards*</u></p> <p>8:30 TO 4:00 - Garage Sale Donations Accepted</p>	<p>31</p> <p>HALLOW EEN</p> <p>9:00 TO 1:00 - Garage Sale Donations Accepted</p>

November 2020

Sunday	Monday	Tuesday	Wednesday	Thursday	Friday	Saturday
1 TIME CHANGE <u>6:30 - Cards*</u>	2 11:00 - Lunch Bunch* 12:30 - Chair Yoga* 2:00 - Sunshine Singers Practice Garage Sale Set Up	3 11:00 - Lunch Bunch* (11:30 - Lunch - New Shane Hall - Rockford*) <u>12:30 - Bridge*</u> 12:45 - Line Dancing Garage Sale Set Up	4 11:00 - Lunch Bunch* (12:00 - Lunch - Shrine - Maria Stein*) 12:30 - Bingo* <u>1:00 - Chat with Linda Pollitz - Alzheimer's</u> Garage Sale Set Up 4:30 - Staff Meeting	5 11:00 - Lunch Bunch* 12:30 - Chair Yoga* 5:30 - Dinner* 6:30 - Cards* Garage Sale Set Up	6 11:00 - Lunch Bunch* 12:30 - Cards* Garage Sale Set Up	7
8 <u>6:30 - Cards*</u>	9 11:00 - Lunch Bunch* 12:30 - Chair Yoga* 3:00 - Sunshine Singers Practice Garage Sale Set Up	10 11:00 - Lunch Bunch* (12:00 - Lunch - Ft Recovery Library*) <u>12:30 - Bridge*</u> 12:45 - Line Dancing Garage Sale Set Up	11 <u>VETERANS DAY</u> 10:30 Neighborhood Nurse BP & Glucose Testing 11:00 - Lunch Bunch* (12:00 - Lunch - Shrine - Maria Stein*) 12:30 - Bingo* <u>1:00 - Toe Nail Trimming*</u> Garage Sale Set Up	12 11:00 - Lunch Bunch* <u>1:00 - Board Mtg</u> 12:30 - Chair Yoga* 5:30 - Dinner* 6:30 - Cards* 8:30 to 6:30 GARAGE SALE	13 11:00 - Lunch Bunch* 12:30 - Cards* 8:30 to 4:00 GARAGE SALE	14 9:30 to 4:00 GARAGE SALE
15 <u>6:30 - Cards*</u> 9:30 to 4:00 GARAGE SALE	16 9:30 - Label Newsletter 11:00 - Lunch Bunch* 12:30 - Chair Yoga* 3:00 - Sunshine Singers Practice 8:30 to 4:00 GARAGE SALE	17 11:00 - Lunch Bunch* <u>12:30 - Bridge*</u> 12:45 - Line Dancing Garage Sale Clean Up	18 11:00 - Lunch Bunch* (12:00 - Lunch - Shrine - Maria Stein*) 12:30 - Bingo*	19 <u>8:00 - All Day Quilt Group</u> 11:00 - Lunch Bunch* 12:30 - Chair Yoga* 5:30 - Dinner* 6:30 - Cards*	20 (10:00 Alzheimer's Support Group - Mercer Health - Luken Room) 11:00 - Lunch Bunch* 12:30 - Cards*	21
22 6:30 - Cards*	23 11:00 - Lunch Bunch* 11:30 - Lunch Bunch Craft - _____ 12:30 - Chair Yoga* 3:00 - Sunshine Singers Practice	24 11:00 - Lunch Bunch* (12:00 - Lunch - Ft Recovery Library*) <u>12:30 - Bridge*</u> 12:45 - Line Dancing	25 11:00 - Lunch Bunch* (12:00 - Lunch - Shrine - Maria Stein*) 12:30 - Bingo*	26 OFFICES CLOSED HAPPY THANKSGIVING	27 OFFICES CLOSED HAPPY THANKSGIVING	28
29 6:30 - Cards*	30 11:00 - Lunch Bunch* 12:30 - Craft Class - Christmas Tree Cone \$3 <u>12:30 - Chair Yoga*</u> 3:00 - Sunshine Singers Practice	<p><i>Italicized and underlined</i> activities are held in the Annex. Activities marked with an * have a fee. Activities marked with () are off campus.</p>				

December 2020

Sunday	Monday	Tuesday	Wednesday	Thursday	Friday	Saturday
		1 11:00 - Lunch Bunch* (11:30 - Lunch - New Shane Hall - Rockford*) <u>12:30 - Bridge*</u> 12:45 - Line Dancing	2 11:00 - Lunch Bunch* (12:00 - Lunch - Shrine - Maria Stein*) 12:30 - Bingo* 1:00 - Chat with Linda Pollitz - Alzheimer's 4:30 - Staff Meeting	3 11:00 - Lunch Bunch* 12:30 - Craft Class - Glass Bulb Ornament \$3 12:30 - Chair Yoga* 5:30 - Dinner* 6:30 - Cards*	4 11:00 - Lunch Bunch* 12:30 - Cards*	5
6 <u>6:30 - Cards*</u>	7 11:00 - Lunch Bunch* 12:30 - Chair Yoga* 2:00 - Sunshine Singers Practice	8 CHRISTMAS CARRY IN <u>12:30 - Bridge*</u>	9 10:30 Neighborhood Nurse BP & Glucose Testing 11:00 - Lunch Bunch* (12:00 - Lunch - Shrine - Maria Stein*) 12:30 - Bingo* 1:00 - Toe Nail Trimming*	10 11:00 - Lunch Bunch* <u>1:00 - Board Mtg</u> 12:30 - Chair Yoga* 5:30 - Dinner* 6:30 - Cards*	11 11:00 - Lunch Bunch* 12:30 - Cards*	12
13 <u>6:30 - Cards*</u>	14 9:30 - Label Newsletter 11:00 - Lunch Bunch* 12:30 - Chair Yoga* 3:00 - Sunshine Singers Practice	15 11:00 - Lunch Bunch* <u>12:30 - Bridge*</u> 12:45 - Line Dancing 6:00 - CHRISTMAS LIGHTS AND COCOA	16 11:00 - Lunch Bunch* (12:00 - Lunch - Shrine - Maria Stein*) 12:30 - Bingo*	17 <u>8:00 - All Day Quilt Group</u> 11:00 - Lunch Bunch* 12:30 - Chair Yoga* 5:30 - Dinner*	18 (10:00 Alzheimer's Support Group - Mercer Health - Luken Room) 11:00 - Lunch Bunch* 12:30 - Cards*	19
20 6:30 - Cards*	21 11:00 - Lunch Bunch* 11:30 - Lunch Bunch Craft - 12:30 - Chair Yoga* 3:00 - Sunshine Singers Practice	22 11:00 - Lunch Bunch* (12:00 - Lunch - Ft Recovery Library*) <u>12:30 - Bridge*</u> 12:45 - Line Dancing	23 11:00 - Lunch Bunch* (12:00 - Lunch - Shrine - Maria Stein*) 12:30 - Bingo*	24 OFFICES CLOSED MERRY CHRISTMAS	25 OFFICES CLOSED MERRY CHRISTMAS	26
27 6:30 - Cards*	28 11:00 - Lunch Bunch* 12:30 - Chair Yoga* 3:00 - Sunshine Singers Practice	29 11:00 - Lunch Bunch* <u>12:30 - Bridge*</u> 12:45 - Line Dancing	30 11:00 - Lunch Bunch* (12:00 - Lunch - Shrine - Maria Stein*) 12:30 - Bingo*	31 NEW YEAR'S EVE OFFICES CLOSE at noon 5:00 - New Years Eve Party		