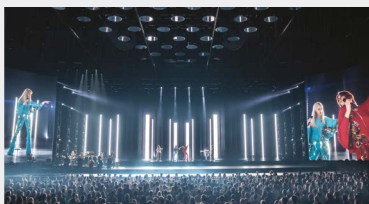


# GREAT DAYS OUT

£1.00

**45**  
**NEW TRIPS**  
**INSIDE**

**SALISBURY'S  
BEST KEPT  
SECRET**



**DAY TRIPS FROM SALISBURY AND NOW ANDOVER TO TOWNS,  
CITIES & ATTRACTIONS IN THE SOUTH OF ENGLAND**



## **HOME PICK UP AND DROP OFF SERVICE**

**Whether you're young or old, whatever your interests are,  
there will be a Great Day Out for you in this leaflet!**

(Door to Door service is only available from postal addresses within Salisbury City Limits)

**Booking office open from 11.00 - 15.00 Monday to Thursday**

# 01722 66 55 44

[www.daytripsonline.co.uk](http://www.daytripsonline.co.uk)



# Welcome

## Welcome to Your 2026 Day Trip Adventure!

Are you ready to explore exciting destinations and create memories to cherish? Then your journey starts here!

Inside, you'll discover a hand-picked selection of new and tried and tested day trips, there is something for everyone.

When you're ready to plan your next adventure, simply visit our website and complete a booking enquiry form or contact our friendly team for more details.

We can't wait to welcome you onboard and be part of your 2026 travel memories.

## Why choose us?



### Personal Approach

Our passengers are at the heart of all we do, putting your comfort and safety first. With over 10 years of experience and commitment to customer satisfaction, you'll always get the very best service on your day trips.



### Our Vehicles and Drivers

Our modern Mini Coach is able to take routes through narrow lanes and roads not accessible to larger buses, enabling you to see more of our beautiful countryside. Once at your destination we can usually drop you right at the door, unlike larger coaches. Our drivers go the extra mile to ensure an enjoyable journey for each passenger.



### Extras

The convenience of our hassle-free door-to-door pick up and drop off service. (This is a service only available to passengers living within Salisbury City limits)

**Get ready to explore fascinating destinations  
and create unforgettable experiences - all in just  
one day!**



## INDEX

### JANUARY 2026

**Wednesday 28th January 10.00am – 12.00pm**  
'Great Days Out' **Coffee Morning**  
(in aid of The Stars Appeal)

### FEBRUARY 2026

**Wednesday 11th February - New for 2026**  
Churchill War Rooms **and Imperial War Museum**

**Thursday 12th February - New for 2026**  
Battersea Power Station Light Show

**Friday 13th February - New for 2026 - Shorter Days Out**  
Roseborne Garden Centre **and**  
**Milestones Living History Museum**

**Tuesday 17th February - New for 2026**  
Borough Market **and The View from The Shard**

**Wednesday 18th February - New for 2026**  
LEGOLAND Windsor **Half Term Fun**

**Thursday 19th February - New for 2026**  
Cardiff City Centre **and Royal Mint with Tour**

**Thursday 26th February**  
The National Gallery **and The**  
**National Portrait Gallery**

**Saturday 28th February - New for 2026**  
Hever Castle

### MARCH 2026

**Wednesday 4th March - New for 2026**  
Ottery St Mary Garden Centre **and Sidmouth**

**Thursday 5th March - New for 2026**  
Tower of London

**Saturday 7th March**  
Houses of Parliament with Guided Tour

**Wednesday 11th March - New for 2026 - Shorter Days Out**  
Shaftesbury, **then** Udders Farm Shop &  
Restaurant for lunch **and** the Orchard  
Park Garden Centre, Gillingham

**Thursday 12th March - New for 2026**  
Amberley Museum & Heritage  
Centre **and Arundel**

**Friday 13th March**  
Hampton Court Palace **or**  
**Kingston-upon-Thames**

**Tuesday 17th March - New for 2026**  
**Brick Lane Music Hall – St Patrick's**  
**Day Show with 3 Course Lunch**

**Wednesday 18th March**  
Bletchley Park (Station X) Please  
book your tickets for midday

**Thursday 19th March - New for 2026**  
The Stitch Festival **or The British Museum**

**Wednesday 25th March - New for 2026**  
Horniman Museum and Gardens  
**and Dulwich Picture Gallery**

**Thursday 26th March - New for 2026**  
Stitching4All & Craft4Crafters  
Show Westpoint Exeter

**Friday 27th March - New for 2026**  
Marble Hill, Twickenham **and**  
**Richmond Upon Thames**

**Tuesday 31st March - New for 2026**  
The Vyne **and Roseborne/**  
**Hilliers Garden Centre**

### APRIL 2026

**Wednesday 1st April - New for 2026**  
**- Shorter Days Out**  
Tyneham Village **and Wareham**

**Thursday 2nd April - New for 2026**  
Bekonscot Model Village **and Hell Fire Caves**

**Wednesday 8th April - New for 2026**  
Chessington World of Adventures  
**Half Term Fun**

**Thursday 9th April - New for 2026**  
Savill Gardens, Windsor Great Park **then**  
**Windsor Boat Cruise with Cream Tea**

**Friday 10th April - New for 2026**  
Whipsnade Zoo

**Saturday 11th April - New for 2026**  
Freemasons' Hall with Tour of Grand  
Temple **and Covent Garden**

**Tuesday 14th April - New for 2026**  
**- Shorter Days Out**  
Great Bustard Salisbury Plain Tour  
**and Devizes**

**Wednesday 15th April 10.00am – 12.00pm**  
'Great Days Out' **Coffee Morning**  
(in aid of The Stars Appeal)

**Thursday 16th April**  
Tulips at Arundel Castle **or Chichester**

**Friday 17th April - New for 2026**  
Bucklers Hard Museum, Tour, and  
River Cruise **then Lymington**

**Wednesday 22nd April - New for 2026**  
Brick Lane Music Hall – **The Best of**  
**British Show with Afternoon Tea**

**Thursday 23rd April - New for 2026**  
Saatchi Gallery **and Kings Road, London**

**Friday 24th April - New for 2026**  
**- Shorter Days Out**  
Lacock **and Leekes Department Store**

**Tuesday 28th April**  
Dunster Castle **and the West Somerset**  
**Steam Railway** (optional)

**Wednesday 29th April - New for 2026**  
Tewksbury **and Marlborough** on Market Days

**Thursday 30th April**  
Highgate Cemetery Tour **and**  
**Longacres Garden Centre**

### MAY 2026

**Tuesday 5th May**  
Kew Gardens

## INDEX

**Thursday 7th May - New for 2026**  
Clevedon **and Bradford Upon Avon**

**Wednesday 13th May - New for 2026**  
St Albans on Market Day

**Thursday 14th May**  
Bowood House & Gardens **and**  
**the Woodland Gardens**

**Friday 15th May – New for 2026 -**  
**Shorter Days Out**  
Frome **and Lakeside Garden**  
**Centre, Crockerton**

**Wednesday 20th May - New for 2026**  
Sezincote House Tour & Gardens  
**and Moreton in Marsh**

**Friday 22nd May**  
Leonardslee Lakes & Gardens,  
Sculpture Park and Art Gallery

**Saturday 23rd May - New for 2026**  
Cotswolds Wild Life Park and Gardens

**Tuesday 26th May - New for 2026**  
Crealy Theme Park & Resort – **Half Term Fun**

**Wednesday 27th May**  
Weald & Downland Museum **or Chichester**

**Thursday 28th May - Shorter Days Out**  
Exbury Gardens **or Beaulieu House**  
**& National Motor Museum**

### JUNE 2026

**Tuesday 2nd June - New for 2026**  
Forde Abbey & Gardens

**Thursday 4th June**  
Arundel (Carpet of Flowers) **or Chichester**

**Friday 5th June**  
Hatfield House **with Guided Tour**

**Tuesday 16th June**  
Jurassic Coast Scenic Tour  
**with Blue Badge Guide**

## INDEX

### Wednesday 17th June - New for 2026

Royal Ascot Races

### Friday 19th June

Blenheim Palace, Park & Gardens

### Saturday 20th June - New for 2026

Barnum the Circus Musical at the Bournemouth Pavilion

### Wednesday 24th June

Sudeley Castle & Grounds with Tour

### Thursday 25th June - New for 2026

Compton Acres followed by Fish & Chips Cruise on the Dorset Queen in Poole Harbour

### Friday 26th June - New for 2026

Cardiff Castle and Cardiff Bay

### Tuesday 30th June - New for 2026

Burton-on-the-Water and Stow-on-the-Wold

## JULY 2026

### Wednesday 1st July

Great Bedwyn Canal Boat Trip

### Thursday 2nd July - New for 2026

Seaton Tramway and Lyme Regis

### Friday 3rd July

Dorchester or Weymouth

### Tuesday 7th July

Lyme Regis

### Wednesday 8th July

Windsor & Boat Cruise with Luxury Cream Tea served on China

### Sunday 12th July

Steamship Shieldhall Solent Cruise with Shanty band

### Monday 13th July - New for 2026

Henley-on-Thames and Tour of Mapledurham House

### Tuesday 14th July

Boat Cruise from Poole to Swanage plus Steam Train ride

### Thursday 16th July

Horse-drawn Canal Boat Cruise and Marlborough

### Friday 17th July

Cirencester on Market Day and Bibury

### Saturday 25th July

ABBA Voyage, ABBA Arena, London – MATINEE

### Wednesday 29th July

Bridport and West Bay

### Thursday 30th July - New for 2026

Abbotsbury Subtropical Gardens and Westbay with scenic Jurassic coastal drive

### Friday 31st July - New for 2026

Mama Mia at the Bournemouth Pavilion

## Make a Memory

Be the cool grandparents during half-term and treat the grandkids to a fun day out. Make memories while you can—before they're too cool to be seen with you!

- Wednesday 18th February - LEGOLAND Windsor
- Wednesday 8th April - Chessington World of Adventures
- Tuesday 26th May - Crealy Theme Park & Resort



## HOW TO BOOK

Please visit our website at [www.daytripsonline.co.uk](http://www.daytripsonline.co.uk) and complete a booking request form, or send an email to [gdbookings@gmail.com](mailto:gdbookings@gmail.com) along with your contact details and the name and date of the trip you wish to book. You can also make a reservation by telephone, by calling 01722 66 55 44.

## PAYMENT

Payment can be made by cheque, credit/debit card, or bacs transfer. Please make cheques payable to **Arrowline Minibuses Ltd**, and send to Great Days Out, 13a Windsor Road, Salisbury, Wiltshire, SP2 7DX. Please note that all reservations must be paid upon receipt of your confirmation form. Credit and debit card payments will incur a £2.00 per transaction additional charge.

## PICK-UP POINT & TIMES

You will be contacted to arrange your pick-up point and time **48hrs prior to the day of travel**. Passengers living within the city limits will be picked up from and returned to their home address. This will be from their door if necessary. However, we would appreciate your cooperation and ask that you wait at the end of your road to speed up the pickup process so passengers are on the bus for as little time as possible prior to reaching their destination. Please be at the pre-arranged point at least 10 minutes prior to your pick-up time. If upon arriving at the pick point, you are not there, the driver will wait for 5 minutes after the pre-arranged time before pulling away. Your driver will try to contact your home or mobile phone if you have one before doing so. No refund will be given to passengers that fail to turn up or turn up after the 5-minute grace period. Nor shall the company be held responsible for the late arrival of the minibus due to circumstances outside of our control (i.e. traffic and weather conditions). Return times shown in the brochure are merely as a guide as the drop off route may take up to 45 minutes to complete.

## ADDITIONAL PICK-UP POINTS

To make our tours more accessible to a wider audience we also have additional pick-up points on route to that day's destination. They are as follows and are shown on each trip.

- |   |   |
|---|---|
| A. Beehive bus stop (Opposite Beehive Cottage)                      | L. Downton (Bus stop outside the Bull Inn)  |
| B. Longhedge (Bus stop on Longhedge roundabout)                     | M. Breamore (Village Hall car park)   |
| C. Amesbury Main Carpark (Bus stop at the entrance)                 | N. Fordingbridge (Bus stop opposite the Surma Valley Indian Restaurant)             |
| D. Andover (George Yard car park, off Eastern Avenue, Andover)      | O. Coombe Bissett (Bus stop outside the Fox & Goose Pub)                            |
| E. Durrington & Larkhill (Bus stop opposite the Stonehenge Inn)     | P. Six Penny Handley (Bus stop past the roundabout on the A354)                     |
| F. Netheravon (Dog and Gun Inn car park)                            | Q. Wilton (Lay by just past Wilton Garden Centre) Alternatively, Wilton Park & Ride |
| G. Winterslow (Bus stop outside the old Pheasant Hotel on the A30)  | R. South Newton (Bus stop opposite St Andrews Road)                                 |
| H. Alderbury (Clarendon crossroads bus stop)                        | S. Steeple Langford (Bus stop before crossroads on Salisbury Road)                  |
| I. Whiteparish (Brickworth corner café)                             | T. Shrewton (Shrewton Sports and Social Club, car park)                             |
| J. Landford (Bus stop on the A36 opposite the Landford Poacher Pub) |   |
| K. Charlton- All-Saints (Bus stop on the A338)                      |   |

## NEW PICK UP POINT FOR 2026

# Residents of ANDOVER you can now join us for Great Days Out

We're excited to announce a new pick-up point in Andover for 2026!

**Location:** George Yard Car Park, off Eastern Avenue, Andover.

**Also by request:** Bus stop on Weyhill Road, outside the Aldi supermarket.

You can now enjoy our Great Days Out with easy, convenient travel on all trips heading towards London and destinations along the A34.

And that's not all—you are welcome to join **every** one of our fantastic excursions, the adventures are endless if you're able to make your way to Salisbury. From there, an even larger selection of exciting trips awaits, giving you more choice, more experiences, and more unforgettable days out!

**You can now join us from Andover for trips to:**

- Bletchley Park
- Legoland
- Hampton Court Palace
- Hever Castle
- Brick Lane Music Hall
- Bekonscot Model Village & Hell Fire Caves
- The Wyne
- Chessington World of Adventures
- Windsor
- Whipsnade Zoo
- St Albans
- Hatfield House
- Ascot Races
- Blenheim Palace
- Henley-on-Thames / Mapledurham House
- and many more trips to London events and attractions!

Look for trips marked with additional pick-up points (A, B, C, D) to see which include Andover.

## Why not use our trips as an opportunity to visit friends you don't often see who live in, or near, the town we're visiting?

You're not required to visit the attraction we're going to—your day is entirely your own. Simply use our service to get there and enjoy your time however you wish.

## WE LOVE WELCOMING GROUPS!

**We love welcoming groups!** If you're a group organiser, we have fantastic, tried-and-tested ideas for inclusive days out with a difference.

### WI AND u3a GROUP ORGANISERS

If you're a WI or u3a group organiser and find it difficult to fill a minibus from your own group, why not join forces with other local WI or u3a branches? We can arrange pick-ups from two or three different branches, making it easy for everyone to enjoy a great day out together.

### RESIDENTIAL HOME MANAGERS

We would be happy to discuss options that fit your residents wishes and budget. If you wish, we can come along for a chat with your residents to help generate some interest. It would be a lovely thing to do and create some good will around the home. With your help we can create an out of the ordinary day out, to lift peoples spirits.

### GARDENING AND HORTICULTURAL CLUB SECRETARIES

We will be visiting **19 well-known gardens during the first half of 2026**, and we'd love for you and your members to join us. We also welcome suggestions if there are other gardens you'd like to explore. Our trips are open to **individuals, small groups, or whole clubs**. You can join an existing tour, or combine with other local clubs to create your own bespoke day out. We can arrange pick-ups from **two or three nearby clubs**, making it easier for you to gather enough like-minded members for a memorable outing. Come along and enjoy inspiring gardens, great company, and a wonderfully relaxed day together.

### THEATRE AND THE ARTS

Although we already offer theatre evenings, we warmly welcome enquiries from club organisers who would like to collaborate with us to create even more opportunities for Salisbury residents to enjoy shows and exhibitions across the South. If you can suggest a venue and a show—and help generate interest within your community—we can provide the transport. Together, we can arrange enjoyable evening trips to the theatre, opera, galleries, or any other cultural events.

### MEN OF SALISBURY



**Come on, gentlemen** — we'd really appreciate your company

**Why not join us on one of our days out?**

Very few men join our trips and events and we would love to change that. It's a great chance to broaden your horizons, enjoy good company, and try something new with likeminded people. **You might be pleasantly surprised!** If you'd like to get a feel for what we do, why not pop along to one of our coffee mornings to find out more? **You will be made to feel very welcome.**



WEDNESDAY  
28th JANUARY

### Coffee Morning Salisbury Methodist Church, St Edmunds Church St, Salisbury

After a very successful first year of Great Days out coffee mornings, they will be returning in 2026! This year we're proud to support the **Stars Appeal for Salisbury District Hospital**, a vital charity that helps make our local hospital the best it can be. Join us for our first Coffee Morning and enjoy homemade cakes, good company, and the chance to meet fellow travellers. We will also be at hand to ask us any questions about our new trips. It will be great to catch up with our customers, new and old. From 10:00am – 12:00pm. Coffee/Tea and Cake £5.00 payable on the day. Just let us know if you will be joining us so we can cater accordingly.

Please join us and help raise money for



TUESDAY  
17th FEBRUARY

### Borough Market and The View from The Shard New for 2026

**Borough Market** is one of London's oldest and largest food markets, this bustling destination brings together well over 100 traders – from expert butchers, bakers and fishmongers to artisan cheesemakers. A must-visit for food lovers, it's the perfect place to taste the very best of British and international flavours all in one spot. Just a few minutes' walk away is the iconic **Shard** and its viewing platform. Experience London's skyline like never before. Behold awe-inspiring 360 panoramic views that impress both day and night from the open air Skydeck. Enjoy a close up of the impressive design inspired from the spires of London churches and the masts of tall ships. One to tick off your bucket list. **FYI: Entry to The Shard is included in your seat price.**

Seat Price £69.00

Also pick up points (A, B, C, D)

Pickups start 08.15

Home around 18.30

WEDNESDAY  
11th FEBRUARY

### Churchill War Rooms and the Imperial War Museum New for 2026

Hidden beneath Westminster lies one of London's most fascinating historic sites — the underground headquarters where the course of the Second World War was decided. Step into the **Churchill War Rooms** and follow in Winston Churchill's footsteps through the preserved offices, map rooms, and corridors where history was made. Once you've explored the historic War Rooms and the Churchill Museum, continue your journey through history with a visit to the **Imperial War Museum**. This museum offers powerful exhibitions, artifacts, and personal stories that bring to life the global impact of conflict and the resilience of those who lived through it. Your ticket for the War Rooms is included in your seat price.

Seat Price £77.00

Also pick up points (A, B, C, D)

Pickups start 08.15

Home around 18.30

WEDNESDAY  
18th FEBRUARY



### LEGOLAND Windsor - Half Term Fun New for 2026

**LEGOLAND Windsor Resort** is a theme park with everything you could want. With over 55 interactive rides, live shows, building workshops, driving schools and attractions, all set in 150 acres of beautiful parkland, the LEGOLAND Windsor Resort is a unique theme park for the whole family to enjoy. An ideal opportunity to makes memories with your sons, daughters or grandchildren. **FYI: General Admission tickets from £34.00 when purchased on-line.**

Seat Price Adult: £40.00 / Child: £30.00

Also pick up points (A, B, C, D)

Pickups start 08.15

Home around 19.30

THURSDAY  
12th FEBRUARY



### Battersea Power Station Light Show New for 2026

This free Light Festival returns to the iconic Thames riverside location, this winter. Highlighting fabulous light art installations from British and international artists, both inside and outside the Grade II listed power station. Visitors can then continue their evening with some retail therapy in the new Power Station retail area. With over 150 shops, bars, restaurants and leisure venues, this iconic Art Deco industrial structure is so much more than just a power station.

Seat Price £43.00

Also pick up points (A, B, C, D)

Pickups start 13.00

Home around 21.00

THURSDAY  
19th FEBRUARY

### Cardiff City Centre and The Royal Mint with Tour New for 2026

Discover the story behind every coin at **The Royal Mint Experience**. At some point, we have all held a coin and wondered how it was made, where it originated, or why a particular design was chosen. As Britain's oldest organisation—and the sole producer of UK circulating coins—The Royal Mint offers an unparalleled insight into over 1,100 years of history. Join a guided tour led by an expert, who will bring the Mint's remarkable story to life. To complete the day, we will then visit **Cardiff city centre**, where you can savour local produce at Cardiff Central Market. Here you will find a buzzing arts and foodie scene and independent shops galore, it will be a great way to round off the day. **FYI: Your entrance and tour is included in your seat price.**

Seat Price £58.00

Also pick up points (Q, R, S)

Pickups start 08.15

Home around 18.30

FRIDAY  
13th FEBRUARY

### Hilliers (Roseborne Garden Centre) and Milestones Living History Museum New for 2026 Shorter Days Out

We will first visit **Hillier Garden Centre**, Weyhill (formally Rosebourne) in the morning on the way to the museum. Then on to **Milestones Living History Museum**, with its cobbled streets, seaside pier, teddy bears, vintage vehicles, an old-fashioned pub, sweet shop and more, there's something for everyone to see, do and enjoy. At Abrahams 1940s sweet shop, you can exchange your ration ticket for a bag of traditional treats. If you are feeling peckish you can visit the vintage tea tent for cakes and light refreshments, or enjoy a hearty meal – from classic fish and chips to children's favourites – at The Rooftops Café. **FYI: Seniors £20.50 (+66) Adults: £21.50. Please book on line, entry time 1:00pm.**

Seat Price £31.00

Also pick up points (A, B, C)

Pickups start 09.30

Home around 17.00

THURSDAY  
26th FEBRUARY

### The National Gallery and The National Portrait Gallery

**The National Gallery** houses an extraordinary collection of paintings by some of the world's most celebrated artists. From Van Gogh and Leonardo da Vinci to Monet, Caravaggio and Vermeer, its masterpieces span centuries of artistic genius. Just a few steps away, you'll also find the **National Portrait Gallery**, home to iconic portraits of historic and contemporary figures. With both galleries only minutes apart, it's easy to explore them. Located in Trafalgar Square, the National Gallery sits at the very centre of London. If art isn't your cup of tea, you'll still be within walking distance of Covent Garden, Leicester Square and even Buckingham Palace. **Best of all, entry to both galleries is free.**

Seat Price £43.00

Also pick up points (A, B, C, D)

Pickups start 08.15

Home around 18.30

SATURDAY  
28th FEBRUARY

### Hever Castle **New for 2026**

Dating back to the 14th century, **Hever Castle** was once the childhood home of Anne Boleyn, second wife of Henry VIII. It formed the unlikely backdrop to a sequence of tumultuous events that changed the course of Britain's history, monarchy and religion. Its panelled rooms, houses fine furniture, tapestries, antiques and what is regarded by some as 'one of the best collections of Tudor portraits after the National Portrait Gallery'. Also, two prayer books which belonged to Anne Boleyn are on display to visitors in the Castle. Also discover magnificent award-winning gardens set in 125 acres of glorious grounds. **Please note there are some steps to navigate around the Castle. FYI: Castle entrance is included in your seat price.**

Seat Price £67.00

Also pick  
up points  
(A, B, C, D)

Pickups  
start 08.15

Home around  
18.30

WEDNESDAY  
4th MARCH



### Otter St Mary Garden Centre and Sidmouth **New for 2026**

**Otter St Mary Garden Centre** was the very first Otter Garden centre and was established in 1964 as Otter Nurseries. Enjoy shopping the extensive range of products in all its various departments. We will then visit **Sidmouth**, with its beaches, the beautiful Connaught gardens, stylish eating places, and some of the best shops in East Devon, Sidmouth has all the charm of an unspoilt seaside resort. With this combination, you have everything you need for a perfect day out.

Seat Price £43.00

Also pick  
up points  
(Q, R, S)

Pickups  
start 08.15

Home around  
18.30

THURSDAY  
5th MARCH

### Tower of London **New for 2026**

Step inside one of the capital's most iconic landmarks, a UNESCO World Heritage Site that has stood for nearly 1,000 years. A royal palace, secure fortress and infamous prison, the **Tower of London** holds centuries of stories within its walls. Marvel at the Crown Jewels and meet the legendary Yeoman Warders and the ravens who guard the Tower. **FYI: Adults £35.80, Seniors £28.50 (65+) and FREE for Historical Royal Palaces members.** Enhance your Tower of London experience with an incredible voyage aboard the official River Tour. Tours depart every 60 minutes. The circular tour takes about 40 minutes. **FYI: Off Peak prices £18.50.**

Seat Price £43.00

Also pick  
up points  
(A, B, C, D)

Pickups  
start 08.15

Home around  
18.30

SATURDAY  
7th MARCH

### Houses of Parliament with Guided Tour and Squires Garden Centre, Twickenham

The Palace of Westminster is commonly called the **Houses of Parliament** after the House of Commons and the House of Lords, the two legislative chambers which occupy the building. The Palace of Westminster covers eight acres, with around 1100 rooms, 100 staircases and 4.8 km of passageways. Venture into the heart of the Palace accompanied by an expert guide for a 90-minute tour and discover the history, heritage and work of UK Parliament. Please be advised the UK Parliament is a working building and tours may be cancelled at short notice. We will stop on route at **Squires Garden Centre** Twickenham for refreshments. **FYI: Your entrance ticket and tour is included in your seat price.**

Seat Price £78.00

Also pick  
up points  
(A, B, C, D)

Pickups  
start 08.15

Home around  
18.30

WEDNESDAY  
11th MARCH

### Shaftesbury, then Udders Farm Shop & Restaurant for lunch and then Orchard Park Centre, Gillingham **New for 2026** **Shorter Days Out**

**Shaftesbury** is a historic hilltop town known for its dramatic views and quintessential English charm. It is believed to have been established by King Alfred the Great in the 9th century. Shaftesbury Abbey was once one of the most important religious houses in England. We will then make our way to **Udder Farm** with a great selection of local produce, including home-reared meat. Here, you can then have lunch in the restaurant, which has been booked for midday **FYI: Lunch is not included in your seat price.** We will then head to The Orchard Park Centre, Gillingham.

Seat Price £31.00

Also pick up  
points (Q)

Pickups  
start 09.30

Home around  
17.00

THURSDAY  
12th MARCH

### Amberley Museum & Heritage Centre and Arundel **New for 2026**

**Amberley Museum** has a lot to offer, especially if you're interested in industrial heritage, traditional crafts and transport. Some of the highlights include lime kilns, narrow-gauge industrial railway, historic buses & transport and traditional rural and industrial crafts. The site was formerly a chalk and lime works quarry from around the 1840s until the 1960s. **FYI: Your entrance ticket is included in your seat price.** Then we travel to **Arundel**, here you will uncover more than you'd expect. Alongside its iconic landmarks, Arundel Castle and Cathedral that shape the town's skyline, you'll find many hidden treasures like a Boating Lake, Crazy Golf, a museum and a wealth of high-end charity shops, other independent shops, antique markets, and art galleries.

Seat Price £53.00

Also pick  
up points  
(H, I, J)

Pickups  
start 08.15

Home around  
17.30

FRIDAY  
13th MARCH

### Hampton Court Palace or Kingston-upon-Thames

With over 500 stores, 2 shopping malls, a colourful market place as well as a booming and vibrant independent scene, it's no wonder Kingston upon Thames is the third biggest shopping destination in London. Alternatively, you can visit Henry VIII's favourite royal residence **Hampton Court Palace** and marvel at the breath-taking grandeur of Henry's State Rooms. Explore the vast Tudor kitchens and stroll through over 60 acres of gardens, lose yourself in the famous maze and appreciate the beauty of one of the greatest Palaces on earth. **FYI: Tickets to the Palace Adult: £30.00 / seniors: (+65) £24.00 Free to Historic Royal Palaces members. Audio guides are included in the palace ticket.**

Seat Price £43.00

Also pick  
up points  
(A, B, C, D)

Pickups  
start 08.15

Home around  
18.30

TUESDAY  
17th MARCH



### Brick Lane Music Hall – St Patrick's Day Show with 3 Course Lunch **New for 2026**

**Brick Lane Music Hall** is dedicated to preserving and celebrating the tradition of British music halls that offers variety performances. It's one of the only permanent music hall venues in Britain, keeping this traditional entertainment alive for us to enjoy. So, don your best green outfits and get ready to celebrate all things Irish! From music and laughter to plenty of cheer, it's a lunch you won't want to miss. **FYI: Your seat price includes a 3-course lunch and show.**

Seat Price £98.00

Also pick  
up points  
(A, B, C, D)

Pickups  
start 08.00

Home around  
20.00



# Travel in Comfort and Style

Our Mini-Coach offers 22 comfortable leather seats, each equipped with armrests and three-point seat belts (with seat belt extensions available for added comfort). Each seat has its own air vent, reading light, USB charging point, and easy access to overhead luggage racks.

Enjoy a smooth and relaxing ride thanks to the vehicle's air suspension system. And because our Mini-Coach can easily navigate narrow country roads that larger buses cannot, you'll have the opportunity to discover even more of England's stunning countryside up close.



## Early Bird Offer!

Book any trip in February or March before January 1st and save £4.00 per trip!

Don't miss out — plan ahead and enjoy extra savings! (Excluding Shorter Days Out)



WEDNESDAY  
18th MARCH

### Bletchley Park (Station X)

Step back in time and discover the remarkable secret world of **Bletchley Park**—the home of the wartime codebreakers. This extraordinary site was where Colossus, the world's first electronic computer, was built to help crack the Lorenz-encrypted (Tunny) messages sent between Hitler and his generals during World War II. The brilliant work carried out here played a vital role in shortening the war and saving countless lives. As you explore the huts, blocks, and exhibitions, you'll gain a fascinating insight into the ingenuity, determination, and secrecy that defined this top-secret mission.

**Entrance Adults: £25.00 Seniors: £23.00 Book online for a 10% discount on these prices. Please book to arrive at 12.00pm.**

Seat Price £43.00

Also pick up points (A, B, C, D)

Pickups start 08.15

Home around 18.30

THURSDAY  
19th MARCH



### The Stitch Festival or The British Museum New for 2026

At **The Stitch Festival** you will see your favourite sewing celebs teaching at various workshops! Shop for fabric, patterns, kits, tools, haberdashery, sewing machines, yarn and embroidery supplies **Please note your ticket to the festival is included in your seat price.** The British Museum is one of the world's greatest cultural institutions, home to over eight million works spanning two million years of history. It was the first national public museum in the world, and is still free to all.

Seat Price £58.00

Also pick up points (A, B, C, D)

Pickups start 08.15

Home around 18.30

WEDNESDAY  
25th MARCH

### Horniman Museum and Gardens and Dulwich Picture Gallery New for 2026

**Horniman Museum and Gardens**—A vibrant blend of culture, nature, and art. Explore colourful world galleries filled with fascinating objects from across the globe, then wander through 16 acres of beautifully landscaped gardens. **Free to visit but there is a charge for the Aquarium, Butterfly House and The Robot Zoo.** **Dulwich Picture Gallery**—A masterpiece of colour and light. Step into Britain's first purpose-built public art gallery, where rich crimson walls showcase an exquisite collection of Old Masters and modern treasures. Surrounded by peaceful gardens and bathed in natural light, the gallery offers a timeless harmony of art, architecture, and atmosphere. **Entrance Adults from £8.00.**

Seat Price £43.00

Also pick up points (A, B, C, D)

Pickups start 08.15

Home around 18.30

THURSDAY  
26th MARCH

### Stitching4All & Craft4Crafters Show Westpoint Exeter New for 2026

The perfect place to stock up on those hard-to-find supplies. There will be a dedicated Textile Hall, along with expanded catering options and even more to explore. Expect an extensive range of fabric traders, sewing and needlecraft supplies, popular hobby and paper craft exhibitors, engaging workshops designed for all skill levels together with live demonstrations and interactive sessions. This is a haven for textile and craft lovers. Whether you are passionate about sewing, fashion, knitting, quilting, or simply enjoy discovering new creative ideas, there is something here for everyone. **FYI: Your entrance ticket is included in your seat price.**

Seat Price £53.00

Also pick up points (Q, R, S)

Pickups start 08.15

Home around 18.30



FRIDAY  
27th MARCH

**Marble Hill, Twickenham and Richmond Upon Thames**  
**New for 2026**

**Marble Hill, Twickenham** – A riverside gem of Georgian elegance. Set amidst lush green parkland and framed by the shimmering Thames, this beautifully restored villa glows with soft pastel hues and historic charm. Stroll through sweeping lawns, enjoy serene woodland walks, and step inside to experience the grace and colour of 18th-century life. **Richmond upon Thames** – A picture-perfect blend of riverfront charm and natural beauty. With its sweeping views from Richmond Hill and lively riverside cafés, this vibrant town glows with character and colour. Richmond offers a timeless mix of elegance, culture, and serenity. **FYI: Marble Hill is free to visit.**

Seat Price £43.00

Also pick  
up points  
(A, B, C, D)

Pickups  
start 08.15

Home around  
18.30

TUESDAY  
31st MARCH



**The Vyne, Hampshire and Rosebourne/ Hilliers Garden Centre**  
**New for 2026**

**The Vyne, Reading** – A Tudor treasure set in lush parkland, this red-brick mansion glows with warm tones and centuries of history. Step inside to admire rich interiors, stained glass, and ornate carvings, then wander through vibrant gardens and peaceful woodland. **FYI: Free for NT members Adults £17.00. Rosebourne / Hillier Garden Centre** Explore beautiful displays of plants, gifts, and homeware, and enjoy the Food Hall packed with local produce and treats.

Seat Price £38.00

Also pick  
up points  
(A, B, C, D)

Pickups  
start 08.15

Home around  
17.30

WEDNESDAY  
1st APRIL

**Tyneham Village and Wareham**  
**New for 2026 Shorter Days Out**

In November 1943 with the Second World War at its height, the MOD requisitioned **Tyneham** for military training ahead of D-Day. Villagers were given just weeks to leave, reassured they could return once the war ended. But they never did. In 1948 the land was permanently taken over by the army, and Tyneham was left abandoned. Many cottages are roofless ruins, softened by nature, while the school and church have been restored to tell the story of the people who once lived there. We will also spend a couple of hours in **Wareham**, one of the few remaining Saxon walled towns in England. This pretty riverside town has a variety of independent shops, cafes, tearooms and cosy traditional pubs, as well as the Saxon, St Martins Church and Wareham Museum.

Seat Price £31.00

Also pick up  
points (O, P)

Pickups  
start 09.30

Home around  
17.00

THURSDAY  
2nd APRIL

**Bekonscot Model Village and Hell Fire Caves – New for 2026**

**Bekonscot Model Village** – A delightful miniature world bursting with colour and charm. Wander through perfectly crafted villages, tiny railways, and detailed scenes that capture 1930s England in all its nostalgic beauty. Set amid vibrant gardens and playful landscapes, Bekonscot offers a joyful, pint-sized escape for visitors of all ages. **Entrance Adult £14.00. Hell-Fire Caves** – A mysterious underground world glowing with atmosphere and intrigue. Carved deep into the chalk hills of West Wycombe, the caves wind through candlelit tunnels and shadowy chambers that echo with tales of secret societies and Georgian revelry. A fascinating journey beneath the earth, rich in history, colour, and legend. **FYI: Adult £9.50**

Seat Price £43.00

Also pick  
up points  
(A, B, C, D)

Pickups  
start 08.15

Home around  
18.30

WEDNESDAY  
8th APRIL



**Chessington World of Adventures**  
**Half Term Fun New for 2026**

Surrey's family theme park that combines rides, a zoo, and a resort in one place. Visitors can enjoy rollercoasters like Vampire and Dragon's Fury, along with gentler family rides such as the Gruffalo River Ride Adventure. The park is also home to more than a thousand animals, from lions and gorillas to sea life, so you get two attractions for the price of one. You don't have to drive to give the kids a half term treat to remember. **FYI: Entrance from £32.00 if booked online.**

Seat Price  
Adult: £40.00 /  
Child: £30.00

Also pick  
up points  
(A, B, C, D)

Pickups  
start 08.15

Home around  
19.30

THURSDAY  
9th APRIL

**The Savill Garden, Windsor Great Park and Boat Cruise with Cream Tea**  
**New for 2026**

**The Savill Garden** is a breathtaking tapestry of colour and beauty, where vibrant blooms, lush woodlands, and shimmering lakes create a peaceful escape in the heart of Windsor Great Park. A perfect blend of art and nature, it's a feast for the senses in every season. A perfect day out for garden lovers and nature enthusiasts alike! In the afternoon, you will board the Boat at Runnymede for a relaxing 2-hour cruise back to Windsor, during which you will be served a cream tea, whilst enjoying the views of Windsor and its famous Castle from the covered deck. **FYI: Gardens and Cruise are included in your seat price. Please note, it is cash only on the cruise**

Seat Price £78.00

Also pick  
up points  
(A, B, C, D)

Pickups  
start 08.30

Home around  
18.30

FRIDAY  
10th APRIL

**Whipsnade Zoo**  
**New for 2026**

**Whipsnade Zoo** in Bedfordshire is the UK's largest zoo, spread over 600 acres of countryside. Run by the ZSL, it's home to thousands of animals including elephants, rhinos, lions, giraffes, and tigers, along with smaller species in the Butterfly House, Aquarium, and lemur walk-throughs. Visitors can explore on foot, via the Safari Bus, or ride the Great Whipsnade Railway, a steam train that circles the park. A landmark feature is the huge White Lion carved into the nearby hillside. With indoor play areas, cafes, and seasonal events, Whipsnade is both a wildlife conservation park and a family day out. **FYI: Adults £30.50 if booked on line. Please note there is an internal bus to help you get around but some areas are unsuitable for walkers/rollers.**

Seat Price £43.00

Also pick  
up points  
(A, B, C, D)

Pickups  
start 08.15

Home around  
19.00

SATURDAY  
11th APRIL

**Freemasons' Hall with Tour of Grand Temple and Covent Garden**  
**New for 2026**

**The Freemasons' Hall** is a stunning war memorial and the international heart of English Freemasonry. The building serves as the official headquarters and has done so since 1933. The Hall is considered one of the finest and most perfectly preserved examples of Art Deco architecture in England and the Grand Temple is notable for its massive bronze doors and its breathtaking mosaic ceiling. **FYI: The Tour is included in your seat price. Covent Garden** is a vibrant, must-see spectacle—a buzzing hub of London life! Picture, dazzling street performers captivating crowds in the historic Piazza, unique shops tucked under beautiful market halls, and a thrilling atmosphere that spills out from Theatreland.

Seat Price £57.00

Also pick  
up points  
(A, B, C, D)

Pickups  
start 08.15

Home around  
18.30

TUESDAY  
14th APRIL

### Great Bustard Tour and Devizes New for 2026 Shorter Days Out

A fantastic opportunity to see the **Great Bustards** and learn about their reintroduction to Salisbury Plain. The tour covers the project site and will visit the viewing hides, to view the bustards and the other spectacular wildlife on Salisbury Plain. **Visitors should be able to get in and out of a Land Rover without assistance, although we can provide a step if needed. There may be a flight of stairs to climb to a hide depending on where the birds are.** Although walking is minimal, please wear appropriate clothing for a day in the countryside. **Devizes** is a captivating market town where medieval history meets stunning Georgian architecture, with over 500 listed buildings and a bustling Market Place. **FYI: Great Bustard tour is included in the seat price.**

Seat Price £65.00

Also pick up points (A, B, C)

Pickups start 09.30

Home around 17.00

WEDNESDAY  
15th APRIL

### Great Days Out Coffee Morning

Join us for a warm start with coffee & cake on **Wednesday 28th January** 2026 at 10:00am - 12:00pm. £5.00 donation on the day  
Salisbury Methodist Church, St Edmunds Church Street, Salisbury

**Coffee Morning Salisbury Methodist Church, St Edmunds Church St, Salisbury**  
Join us for our second Coffee Morning. This year we're proud to support the **Stars Appeal for Salisbury District Hospital**, a vital charity that helps make our local hospital the best it can be. Enjoy homemade cakes, good company and meet fellow travellers. It's also a chance to ask us any questions about our new brochure. From 10:00am - 12:00pm. Coffee/Tea and Cake £5.00 payable on the day. Please let us know if you will be joining us, so we can cater accordingly.

Please join us and help raise money for



THURSDAY  
16th APRIL

### Tulips at Arundel Castle or Chichester

**Arundel Castle**, gardens and grounds provide a stunning backdrop for one of the largest tulip displays in the country. In 2024, the Tulip Festival celebrated its 11th anniversary, with the dedicated garden team having planted an incredible 1.2 million spring bulbs over the years. Just outside the Castle you also have the Cathedral, Arundel Museum and many independent shops, antique markets, and art galleries. **FYI: Your entry ticket into the Castle and Gardens is included in your seat price.** Alternatively, you may choose to be dropped off in the historic city of **Chichester**. Here you'll find an excellent mix of shops and plenty of places to enjoy lunch. At the heart of the city stand the magnificent Cathedral and the Novium Museum, both well worth a visit.

Seat Price £67.00

Also pick up points (H, I, J)

Pickups start 08.15

Home around 18.00

FRIDAY  
17th APRIL

### Bucklers Hard Museum with Tour and River Cruise and then Lymington New for 2026

Nestled on the serene banks of the Beaulieu River, deep within the New Forest, lies the unspoilt haven of **Buckler's Hard**. This peaceful hamlet, with its picturesque Georgian cottages leading down to the water, remains virtually untouched by the passage of time. Whether you are simply taking in the view or delving into its rich past, time truly flows differently here. **FYI: Included in your ticket is a Tour and River Cruise.** The rest of the day will be spent visiting the beautiful Georgian market town of **Lymington**. The town is world renowned sailing resort with a range of interesting independent shops and a pretty harbour, where you find a number of harbour side restaurants, cafés and tearooms.

Seat Price £53.00

Also pick up points (H, I, J)

Pickups start 08.15

Home around 17.30

# ANGELA Holidays

UK & Continental  
coach holidays,  
short breaks,  
sea & river cruises

## Come and join the Angela family.



We are a fully bonded family operated company based in Bursledon, Southampton who have been serving the south since 1953 offering UK and Continental breaks since 1968.

A reputation for excellence is what has served the company wonderfully well throughout its history from the office staff through to the experienced tour drivers. Our team are determined to not only maintain but to reach even greater heights.

Call us or visit our website to view our current Summer or Winter brochures, alternatively you are welcome to visit us at our office in Bursledon.

Salisbury  
pick up  
available on  
all tours

Dont delay book  
today, Sit back,  
relax and enjoy!

[www.angelaholidays.co.uk](http://www.angelaholidays.co.uk)

T: 023 804 04536





## Your Local Roofing Experts



A Class Roofing and Construction Ltd (A Class Roofing) is an established roofing and construction business. We have been established, well known and well credited business and between us have more than 100+ years of roofing experience.

We are a fully licenced and insured roofing business and perform our work with pride, safety and professionalism. We appreciate how important your home or business is to you and therefore we ensure our work is given the same care and attention as we would complete if we were performing on our own property.

We pride ourselves with our customer service, health and safety knowledge, and our attention to detail. We will always try to ensure that any work is a "stress-free" project from start to finish for our clients.

Please do contact us if you wish to discuss any roofing needs further or have a query in mind.

**We are always more than happy to help.**



**Salisbury 01722 485910**  
**Andover 01264 312444**

**website** [a-classltd.co.uk](http://a-classltd.co.uk)  
**email** [admin@a-classltd.co.uk](mailto:admin@a-classltd.co.uk)



At Stonehenge Scaffolding, we've spent over 20 years supporting Salisbury's homes, businesses, and heritage sites with expert scaffolding solutions. Locally owned and fully insured, we pride ourselves on safety, professionalism, and outstanding customer service. Our experienced team is CITB and CISRS qualified, with a reputation for handling every job — from residential roof access to large-scale commercial projects — efficiently and safely. We're not just scaffolders; we're partners in helping you get the job done right, on time, and with total peace of mind.



**CONTACT US TODAY**

**SALISBURY – 01722 443855**

**E-MAIL – [ACCOUNTS@STONEHENGESCAFFOLDING.CO.UK](mailto:ACCOUNTS@STONEHENGESCAFFOLDING.CO.UK)**

**WEBSITE – [STONEHENGESCAFFOLDING.CO.UK](http://STONEHENGESCAFFOLDING.CO.UK)**





**New Garage**  
HARNHAM Ltd  
01722 321330

**VEHICLE WIDE DIAGNOSTICS**  
WHATEVER THE PROBLEM,  
WE HAVE THE SOLUTION

**RAC**  
Approved Garage

Powered by  
**autofirst**  
network



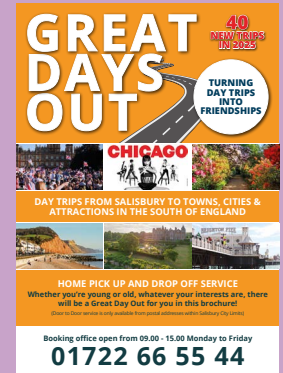
**DRIVING**  
SALES AND SERVICE

**ata**  
AUTOMOTIVE TECHNICIAN  
ACCREDITATION

**NEW GARAGE (HARNHAM)**  
28/30 HARNHAM TRADING ESTATE  
SALISBURY, WILTSHIRE, SP2 8NW

## Brochures are still available

You can find our more familiar and informative A5 brochure in digital form, on our website [www.daytripsonline.co.uk](http://www.daytripsonline.co.uk) for you to download. We also print a limited number of these A5 brochures, which cost £1.00 when purchased from your driver on the bus and £2.00 if you would like one posted to you.



### Our Facebook page

If you'd like to keep up with what we're doing at Great Days Out, be sure to follow our Facebook page. There you'll find updates on upcoming events, newly added trips not featured in this leaflet, and occasional Flash Sales - offering great money-saving deals, such as half-price seats on selected trips.

Scan this QR code to find and follow us.



## Four Unmissable Trips Coming in the Second Half of 2026

**1st August:** Battle of the Proms at Highclere Castle.

**3rd September:** Lord of the Dance at Bournemouth Pavillion. (30th Anniversary Show)

**16th September:** Tony Blackburn's (Sounds of the Sixties show) at Bournemouth Pavillion.

**22nd October:** Moulin Rouge Matinee at a London Theatre.

For full details and to secure your seat, call 01722 66 55 44

**Our Theatre trips are very popular so don't delay booking your seat.**



WEDNESDAY  
22nd APRIL

**Brick Lane Music Hall – The Best of British Show  
with Afternoon Tea New for 2026**

**Brick Lane Music Hall** is dedicated to preserving and celebrating the tradition of British music halls that offers variety performances, — from traditional music-hall bills (comic acts, singers, variety turns) to more modern “devised” shows. It’s one of the only permanent music hall venues in Britain. Music hall mostly died out decades ago but Brick Lane Music Hall is keeping the form alive. Why not step back into the good old times of British entertainment, when entertainment was varied, fun and Mary Whitehouse wouldn’t have been offended. So please come along and celebrate all things British with a traditional quintessentially Afternoon Tea. **FYI: Seat price includes Show and Afternoon Tea.**

Seat Price £90.00

Also pick  
up points  
(A, B, C, D)

Pickups  
start 08.15

Home around  
20.00

THURSDAY  
23rd APRIL

**Saatchi Gallery and Kings Road, London New for 2026**

The **Saatchi Gallery** is a major contemporary-art gallery in London, dedicated to exhibiting cutting-edge art by emerging and international artists. The gallery first focused on American minimalist and pop artists (such as Andy Warhol) before shifting in the early 1990s to showcase the so-called “Young British Artists” such as Damien Hirst. **The King’s Road** in Chelsea, is one of London’s most famous and stylish streets. At its height of popularity in the 1960’s, it was a place where fashion, culture, and history blended effortlessly. Once a private road for King Charles II, it has evolved into a vibrant destination lined with boutiques, cafés, galleries, and restaurants, while still retaining its distinctive Chelsea charm. **FYI: Entrance to the Gallery is Free.**

Seat Price  
£ 43.00

Also pick  
up points  
(A, B, C, D)

Pickups  
start 08.15

Home around  
18.30

FRIDAY  
24th APRIL



**Lacock and Leekes Department Store  
New for 2026 Shorter Days Out**

**Lacock** is a picture-perfect English village, owned almost entirely by the National Trust, which carefully preserves its unspoiled charm. With cobbled streets, historic cottages and a timeless atmosphere, it feels like stepping back in time. Its well-preserved beauty has made Lacock a favourite filming location for many famous TV series and films. At **Leekes Department Store** you will find lots under one roof. Clothing and accessories, Cards and Gifts and all things home related.

Seat Price £31.00

Also pick up  
points (Q, T)

Pickups  
start 09.30

Home around  
17.00

TUESDAY  
28th APRIL

**Dunster Castle and the West Somerset Steam Railway (optional)**

**Dunster Castle**, with its striking Norman origins, impressive medieval gatehouse, and ruined tower, is a vivid reminder of its turbulent past. By the 19th century, the castle was transformed into a grand country home for the Luttrell family, who lived here for more than 600 years. You can also walk down to the beautiful medieval village of Dunster. **FYI: Castle entrance: Adults £17.00 (free for National Trust members)** If you wish, you can also explore the nearby seaside town of Minehead, with its long sandy beach, historic harbour, and lively high street. For a touch of nostalgia, step aboard the **West Somerset Railway**. This heritage line runs for 20 miles through breathtaking countryside and along the dramatic coastline. Please check their website for times and prices.

Seat Price £43.00

Also pick  
up points  
(Q, R, S)

Pickups  
start 08.15

Home around  
18.00

WEDNESDAY  
29th APRIL

**Tewksbury and Marlborough on Market Days**

**Tewkesbury** is a historic market town and is famous for Tewkesbury Abbey, a magnificent Norman church with one of the finest Romanesque towers in existence. Its well-preserved centre showcases a distinctive medieval townscape with numerous black and white half-timbered buildings and a network of traditional narrow alleyways. You will find a charming mix of boutiques, bookshops, and stores selling local produce like the famous Tewkesbury Mustard. There are numerous cafes, tea rooms, and traditional pubs, offering a variety of food and drink options, along with the picturesque riverside setting. We will also visit **Marlborough**, which offers big name chain stores, nestled amongst quirky side arcades with an extensive choice of independent shops.

Seat Price £43.00

Also pick  
up points  
(A, B, C, E, F)

Pickups  
start 08.15

Home around  
18.00

THURSDAY  
30th APRIL



**Highgate Cemetery Tour and  
Longacres Garden Centre**

Our day will start at **Longacres Garden Centre**, Bagshot, a favourite with our customers, with plenty to see. Then onto **Highgate Cemetery** where you will be taken on a guided tour of the West side of the Cemetery, home to its most impressive architectural features. Your guide will explain the history and background and lead you through the atmospheric Terrace Catacombs, which can only be visited on a guided tour. **FYI: The guided tour is included in the seat price.**

Seat Price £63.00

Also pick  
up points  
(A, B, C, D)

Pickups  
start 08.15

Home around  
18.30

TUESDAY  
5th MAY

**Kew Gardens**

Explore **Kew Gardens**, the world’s most renowned botanical garden, spanning 500 acres of breathtaking woodland. Home to the largest and most diverse collection of living plants on Earth, Kew is a global leader in botanical research and conservation, including the world’s largest seed conservation project. Lose yourself in the stunning landscapes, wander through magnificent glasshouses and historic buildings, and discover a vast range of rare and beautiful plants. While you’re here, step back in time with a visit to Kew Palace, a former royal summer house that became the residence of King George III. **FYI: Adult: £22.00 Discounted tickets are available when purchased online.**

Seat Price £43.00

Also pick  
up points  
(A, B, C, D)

Pickups  
start 08.15

Home around  
18:30

THURSDAY  
7th MAY

**Clevedon and Bradford Upon Avon New for 2026**

**Clevedon** is an elegant Victorian seaside town famed for its Grade I listed pier, often called “the most beautiful in England,” and the enormous, open-air Marine Lake, which is a popular spot for year-round swimming. The town boasts a strong independent retail scene, particularly concentrated along Hill Road, which is known for its array of boutique shops, including jewellers and fashion stores, as well as specialist food outlets. There is a wide choice of places to eat, from the scenic Glass Box café on the pier, to various coffee houses and tea rooms. We will then visit **Bradford-on-Avon**, the history of the town can be traced back to Roman origins, with its historic buildings, shops, pubs and restaurants. It has the feel of its neighbour Bath, on a miniature scale.

Seat Price £43.00

Also pick  
up points  
(Q, R, S)

Pickups  
start 08.15

Home around  
18.30

WEDNESDAY  
13th MAY

### St Albans on Market Day **New for 2026**

The entire city centre bursts with an incredible, vibrant energy as St Peter's Street transforms into one of the oldest and best street markets in England, a lively tradition since the 9th century, boasting a colourful, bustling thoroughfare packed with over 160 stalls offering everything from farm-fresh produce to unique fashion, homewares, and quirky gifts, roam around whilst savouring the intoxicating aromas of international street food which fill the air. As well as the market, head to the magnificent St Albans Cathedral and Verulamium Park which sits above the remains of the Roman city of the same name. If you feel energetic, make sure to climb the medieval Clock Tower in the city centre, it's the only one of its kind left in England and gives you fantastic panoramic views.

Seat Price £43.00

Also pick  
up points  
(A, B, C, D)

Pickups  
start 08.15

Home around  
18.30

THURSDAY  
14th MAY



### Bowood House & Gardens and the Woodland Gardens

Set within 100 acres of beautifully landscaped 'Capability' Brown parkland, **Bowood House** is full of rich history and natural beauty. Wander through the elegant house or relax with a picnic or cream tea in one of the inviting cafés. A highlight of the estate is the Woodland Garden, open for just six weeks during the flowering season. Covering more than 30 acres, it offers breathtaking displays of colour. **FYI: Admission to the House and Gardens is included in the seat price.**

Seat Price £60.00

Also pick up  
points (Q, T)

Pickups  
start 08.15

Home around  
17.30

FRIDAY  
15th MAY

### Frome and Lakeside Garden Centre, Crockerton **New for 2026 Shorter Days Out**

**Frome** is an artistic and cultural market town in Somerset, known for its concentration of historic architecture and unique atmosphere. The town centre is a vibrant labyrinth of steep, cobbled medieval streets, such as Catherine Hill and Gentle Street, lined with independently owned shops, galleries, and cafes. Its most unique feature is Cheap Street, which has a running stream flowing down the middle. The **Lakeside Garden Centre** is a destination known for its wide selection of quality plants (many which are grown in the company's own nurseries) with its scenic location right next to a picturesque lake, that customers are welcome to walk around. It also has a popular coffee shop with tables situated around the lake.

Seat Price £31.00

Also pick up  
points (Q, R, S)

Pickups  
start 09.30

Home around  
17.00

WEDNESDAY  
20th MAY

### Moreton in Marsh and Sezincote House Tour and Gardens **New for 2026**

**Moreton-in-Marsh** is a historic Cotswold market town built on the ancient Roman Fosse Way. Its wide High Street is lined with honey-coloured 17th and 18th-century coaching inns, like the White Hart Royal where King Charles I once stayed. Its literary claim to fame is the Bell Inn, rumoured to be the inspiration for The Prancing Pony in J.R.R. Tolkien's work. **Sezincote House** is a spectacular, one-of-a-kind Mogul palace. Built around 1805 by Sir Charles Cockerell, and designed by his architect brother Samuel Pepys Cockerell, its vibrant exterior features a copper onion dome and peacock-tail arches that contrast with its Greek-Revival interior. The Repton-influenced gardens feature an Indian bridge and temple. **FYI: Tour included in the price.**

Seat Price £57.00

Also pick  
up points  
(A, B, C, E, F)

Pickups  
start 08.15

Home around  
18.30

FRIDAY  
22nd MAY



### Leonardslee Lakes and Gardens, Sculpture Park and Art Gallery

Often described as "the finest woodland gardens in England," **Leonardslee** offers a peaceful, unspoiled setting where nature flourishes. The estate is home to an extraordinary variety of wildlife and birds, as well as more than 100 free-roaming deer, regularly seen throughout the grounds. This enchanting destination is also a treasure trove of art and culture—wander among beautiful sculptures or explore the on-site Art Gallery. **FYI: Your ticket is included in the seat price.**

Seat Price £59.00

Also pick up  
points (H, I, J)

Pickups  
start 08.15

Home around  
18:00

SATURDAY  
23rd MAY

### Cotswolds Wildlife Park and Gardens **New for 2026**

Step into **Cotswold Wildlife Park & Gardens**, set in the beautiful Cotswold countryside. Explore over 160 acres of stunning parkland, home to more than 260 species of animals. Get eye-to-eye with a giraffe, walk among lemurs in the Madagascar exhibit, or watch rhinos graze against the backdrop of the beautiful Gothic manor house. Enjoy a delicious lunch at the restaurant or picnic on the spacious lawns. You can watch penguins being fed daily and for the brave, peek into the Reptile House to see crocodiles and venomous snakes, or visit the Tropical House where sloths, bats, and birds roam freely. The park is a glorious setting where animals and nature coexist in perfect harmony. **Admission: £17.50 adults / £13.50 (Seniors) Tickets discount when purchased online.**

Seat Price £40.00

Also pick  
up points  
(A, B, C, E, F)

Pickups  
start 08.15

Home around  
18.00

TUESDAY  
26th MAY

### Crealy Theme Park & Resort – Half Term Fun **New for 2026**

A perfect Half Term chance to take the children and grandchildren for a fun day out to **Crealy Theme Park & Resort**, spend 5 hours at Devon's award-winning family fun destination! It's an action-packed playground with over 60 rides, with a Twister roller coaster, Tidal Wave log flume and the Maximus coaster. But the fun doesn't stop with the thrills—say Izzy Wizzy and head into Sooty Land, a vibrant zone dedicated to the mischievous puppet and his gang! From massive indoor adventure play areas for those inevitable rainy days to a real-life farm and zoo where you can meet meerkats and cuddly alpacas, Crealy is a full-throttle family adventure that guarantees smiles, no matter the weather! Spend some quality time with the kids. **FYI: Admission from £15pp if booked on line.**

Seat Price  
Adult: £40.00 /  
Child: £30.00

Also pick up  
points (Q, R, S)

Pickups  
start 08.15

Home around  
19.30

WEDNESDAY  
27th MAY

### Weald and Downland Museum or Chichester

Step back through 1,000 years of rural life at this remarkable open-air museum. Set within 40 acres of beautiful countryside, the museum is home to more than 50 rescued historic buildings, each telling its own story of the past. Enjoy a fascinating programme of live demonstrations—from cooking in a Tudor kitchen and blacksmithing in a Victorian forge, to traditional baking in an old bakehouse. You can also take a woodland walk or relax at the waterside café. The museum is also the filming location of the much-loved TV series "The Repair Shop," set inside one of its historic barns. Alternatively, you may choose to spend the day in nearby **Chichester**, with its shops, cafés, and cultural attractions. **FYI: Entrance to the Museum is included in the seat price.**

Seat Price £53.00

Also pick  
up points  
(H, I, J)

Pickups  
start 08.15

Home around  
17:30



# Testimonials

My first Great Days Out trip was last week to Lulworth Cove and Moreton. Our driver, David, was informative, professional and demonstrated exceptional driving skills and customer service. The destinations and stops chosen made for a thoroughly enjoyable day, even with rather overcast and windy weather. This day out and the level of attention to us all could not have been bettered and I shall definitely be booking again. It was, indeed, a Great Day Out. Loved it! I wholeheartedly recommend booking with them.

LS – July 2025

Thank you, Great Days Out for a wonderful trip to the Cotswolds! Toni and Sue send their thanks for an amazing day out. Thoughtful and considerate driver David made the journey so enjoyable by providing information on places to eat, things to see and also provided fans for our comfort and extra water to drink.

Nothing was too much trouble. We can't wait for our next day out. We felt safe with his excellent driving. 10 out of 10 all-round from us!

Ms T E & Ms S H August 2025

We were all super impressed by how organised the day was, starting with a prompt pickup. David was very professional & informative about the trip, we all had a lovely day and will certainly be looking into future trips.

Kind regards H – August 2025

Thank you for a truly brilliant day out at the Knit and Stitch show at Alexander Palace in London. Myself and my two friends would like to thank our driver, David, for making our first trip with you so easy and relaxing. His kindness to everyone on the minibus was lovely to see. We shall definitely be looking to do more trips with you in the future.

SR and friends October 2025

Dear Dave, I do admire your professionalism and kindness to your clients. You have found a wonderful niche in the market in enabling the elderly to be able to get out and about when they would otherwise be stuck at home. It is something to be proud of and well done.

Mrs S P October 2025

Dear Dave, I just wanted to write to say thank you so very much for a fabulous day out. We all loved Waddesdon (your suggestion!) and you really looked after us all so well. Your attention to detail and thoughtful and accommodating approach is so much appreciated by us all. I will be in touch in the new year to set up some trips with you in 2026.

Mrs A C 03.12.2025

# Gift Vouchers

## Make someone's day with a Great Days Out gift voucher!

Give the gift of choice and adventure — perfect for family, friends, or loved ones. Whether it's for a birthday, anniversary, Christmas, or simply to show your appreciation, our gift vouchers make every occasion special.

Choose any denomination to suit your budget. Vouchers can be used as full or part payment towards any of our exciting day excursions.

A thoughtful gift which will create a memorable experience.

## Would you like to advertise in next year's brochure and reach 18,000 Salisbury residents?

Your advertisement will be seen over and over again for 12 months of the year as the brochure is printed in January and the last trips are in December. The cost is a fraction of what you would pay to advertise for that length of time in weekly or monthly magazines, free local papers, radio advertising or social media. You will not be advertising alongside your competitors as only one business of its kind will be advertising in the brochure. We do not distribute these randomly through post boxes, they are sent to existing customers with the remainder picked up from places with busy footfall within a 10-mile radius of Salisbury.

## What are the benefits to you?

**Full colour advertisement in a brochure that is valid for 12 months.**

**You will be the only trade / business of your kind in the brochure.**

**950 brochures posted to existing customers on our database.**

**18,000 brochures will be printed and distributed this year.**

**Brochure stands will be sited in over 140 sites in and around Salisbury.**

**A targeted audience of mostly home owners within a 10-mile radius of Salisbury.**

If you would like to explore this opportunity further and discuss your advertisement content  
**Please contact Dave on 01722 55 55 54 or email [salisburyminibuses@gmail.com](mailto:salisburym minibuses@gmail.com)**

THURSDAY  
28th MAY

**Exbury Gardens or Beaulieu House and National Motor Museum - Shorter Days Out**

Visit **Exbury Gardens**, famous for its collection of rhododendrons, azaleas, and camellias. Spread across 250 acres of beautifully landscaped woodland in the heart of the New Forest National Park. Don't miss the charming Steam Railway (additional charge). **FYI: Adult entrance £16.90 Alternatively, explore the National Motor Museum, Beaulieu – a world-class attraction that also includes the elegant Palace House & Gardens, the historic Beaulieu Abbey, and the exciting World of Top Gear. Discover the story of the Montagu Family, who have lived there since 1538, and take a ride on the famous Monorail. FYI: Adults £27.00 (60+ concession available). Reduced rates online in advance.**

Seat Price £31.00

Also pick  
up points  
(H, I, J)

Pickups  
start 09.30

Home around  
17.00

TUESDAY  
2nd JUNE

**Forde Abbey & Gardens New For 2026**

Discover **Forde Abbey**, a magnificent estate with a rich history spanning 900 years. This historic house is a treasure trove, featuring stunning Mortlake tapestries woven from Raphael's world-famous cartoons. Step back in time as you walk through remarkably preserved medieval quarters, following in the footsteps of Cistercian monks. You might even recognize the exquisite interiors from the recent Hollywood adaptation of *Far from the Madding Crowd*. You can also enjoy a seasonally inspired menu with locally sourced ingredients and fresh produce grown on the Estate in the Abbot's Table Café which is located within the historic grounds of Forde Abbey. **FYI: FREE for Historic Houses members or Adult: £19.00 for entry to the House and Gardens.**

Seat Price £43.00

Also pick  
up points  
(Q, R, S)

Pickup starts  
08:15

Home around  
18.00

THURSDAY  
4th JUNE



**Arundel (Carpet of Flowers) or Chichester**

Experience **Arundel** and you will discover more than you'd expect. As well as its famous landmarks, Arundel Castle and Arundel Cathedral, you also have many independent retailers, antique markets, art galleries and Arundel Museum. On the 19th June there is also the famous Carpet of Flowers running the full length of the Cathedral as well as other floral displays around the Cathedral. If you would prefer to spend the day in **Chichester**, you can be dropped off on route.

Seat Price £38.00

Also pick  
up points  
(H, I, J)

Pickup starts  
08:15

Home around  
18.00

FRIDAY  
5th JUNE

**Hatfield House with Guided Tour**

Enjoy a house steeped in over 400 years of history, with picture perfect gardens that offer 40 acres of tranquillity and woodland walks. Built by Robert Cecil, in the grounds where Queen Elizabeth I spent much of her childhood, the house is home to centuries of historical treasures collected by the Cecil family. You will find a unique retail experience and a cosy restaurant to refuel in the Stable Yard. Experience the award-winning gardens, nominated for the Historic Houses 'Garden of the Year' award in 2019. Before you leave, be sure to visit the plant nursery. It's stocked with a seasonal selection of reasonably priced perennials, all grown on the estate. There's plenty to inspire you and you'll find it hard to leave empty-handed! **FYI: House entry and tour included in the seat price.**

Seat Price £76.00

Also pick  
up points  
(A, B, C, D)

Pickup starts  
08:15

Home around  
18:30

TUESDAY  
16th JUNE

**Jurassic Coast Scenic Tour with Blue Badge Guide**

Our interesting and educational day out with a **Blue Badge Guide** will begin with a visit to the Heights Hotel, Portland which boasts stunning panoramic views over Chesil Beach, Lyme Bay and Portland Harbour from there café/restaurant. Afterwards, we will be guided through the Georgian resort of Weymouth and Isle of Portland, where your guide will be informing us of the history of the resort. We will then take the scenic coast road to West Bay via Abbotsbury Village and swannery; throughout the drive your guide will be pointing out places of interest and speaking about the history of this stunning length of coastline. When we arrive in West Bay you will have time to explore this pretty fishing village and have some lunch. **FYI: The Tour is included in your seat price.**

Seat Price £60.00

Also pickup  
points (O, P)

Pickup starts  
08:15

Home around  
18:00

WEDNESDAY  
17th JUNE



**Royal Ascot Races New for 2026**

**Royal Ascot** is a dazzling celebration of fashion, flair, and world-class racing. The atmosphere sparkles with excitement as bold hats, elegant dresses, and striking style take centre stage alongside the thunder of hooves and the cheers of the crowd. It's glamour, tradition, and British summertime at its most spectacular. Tickets are not included in your seat price. **We advise you to book early to avoid disappointment and get the best rates directly from Royal Ascot on line.**

Seat Price  
£55.00 (Only)

Also pick  
up points  
(A, B, C, D)

Pickup starts  
09.30

Home around  
20.30

FRIDAY  
19th JUNE



**Blenheim Palace, Park & Gardens including entry to the popular Flower Show.**

**Blenheim Palace** is the seat of the Duke of Marlborough and the only non-royal country house in England to hold the title of Palace. The birth place of Sir Winston Churchill, the Palace is a masterpiece of Baroque architecture, with 90 acres of award-winning Formal Gardens. The Flower Show is the perfect place to discover your favourite plants, flowers and other gardening goodies. **FYI: Entrance to the Palace, Gardens and Flower Show are included in the seat price.**

Seat Price £76.00

Also pick  
up points  
(A, B, C, D)

Pickup starts  
08:15

Home around  
18:30

SATURDAY  
20th JUNE

**Barnum the Circus Musical at the Bournemouth Pavilion New for 2026**

Step right up into the dazzling world of **P.T. Barnum** — a place where imagination has no limits and ambition knows no bounds. Together with his devoted wife, Charity, Barnum's extraordinary life unfolds in a whirlwind of daring dreams and spectacular triumphs. Taking centre stage as the legendary 19th-century showman is West End favourite and TV star Lee Mead. Rising to fame as the winner of *Any Dream Will Do*, Lee has since captivated audiences with acclaimed performances in *Joseph and the Amazing Technicolor Dreamcoat*, *Wicked*, and *Legally Blonde*. Now, he brings his trademark charm to the role of Barnum in this unmissable production. **FYI: Your ticket for the show is included in seat price.**

Seat Price £80.00

Also pick  
up points  
(K, L, M, N)

Pickup starts  
17.00

Home around  
23.00



WEDNESDAY  
24th JUNE



### Sudeley Castle and Grounds with Tour

Explore **Sudeley Castle**, a stunning Tudor Castle with a thousand years of royal history. The castle offers a fascinating journey through centuries of English royalty, romance, ruin, and revival. Follow in the footsteps of kings and queens with a guided tour to discover the castle's rich past, then wander through ten exquisite, award-winning gardens. Afterwards, you can enjoy a meal at one of the on-site cafés. **FYI: The tour is included in your seat price and lasts 45 minutes.**

Seat Price £67.00

Also pick  
up points  
(A, B, C, E, F)

Pickup starts  
08:15

Home around  
18:00

THURSDAY  
25th JUNE

### Compton Acres followed by Fish & Chips cruise on the Dorset Queen in Poole Harbour New for 2026

**Compton Acres** in Poole is one of England's finest privately owned gardens, created in the 1920s and beautifully preserved today. Spread across ten themed gardens, it features everything from tranquil Japanese landscapes to vibrant Italian terraces, all overlooking the Dorset coast. A peaceful blend of colour, design, and horticultural artistry, Compton Acres is a true garden lover's haven. **Dorset Queen** is the only vintage motor yacht operating on the South Coast of England. Originally built in 1938, she is believed to have taken part in the Dunkirk evacuations in 1940. You will be welcomed aboard for a leisurely cruise with Fish & Chips. **FYI: Entrance to the Compton Acres and the Fish & Chip Cruise is included in your seat price.**

Seat Price £74.00

Also pick  
up points (O, P)

Pickup starts  
08:00

Home around  
17:00

FRIDAY  
26th JUNE

### Cardiff Castle and Cardiff Bay New for 2026

**Cardiff Castle** is one of Wales's most iconic heritage landmarks, with a history spanning over 2,000 years, from its origins as a Roman fort to its transformation into a Norman stronghold, and even a lavish Victorian Gothic mansion. The castle's walls tell a remarkable story of survival and reinvention. Cardiff Castle blends ancient history with striking architecture, making it a true symbol of Wales's enduring spirit. **FYI: Adult £16.00 / Seniors £12.50. Guided Tours cost £4.00.** Cardiff Bay is one of the most vibrant and scenic areas of Wales's capital, blending history and culture. Once the world's largest coal-exporting port, it has been transformed into a lively destination filled with attractions and striking architecture. Boat trips around the bay are also available.

Seat Price £43.00

Also pick  
up points  
(Q, R, S)

Pickup starts  
08:15

Home around  
18:30

TUESDAY  
30th JUNE

### Bourton-on-the-Water and Stow-on-the-Wold New for 2026

**Bourton-on-the-Water**, known as the "Venice of the Cotswolds," is a charming village famous for its low stone bridges, golden cottages, and the gentle River Windrush. Highlights include the Model Village, Cotswold Motoring Museum, and riverside tearooms, making it a picturesque and quintessentially English destination. **Stow-on-the-Wold** is a historic market town in the heart of the Cotswolds, renowned for its charming stone streets, traditional market square, and antique shops. Once a key wool trading centre, the town retains its historic character with quaint tea rooms, cozy pubs, and boutique stores. Surrounded by rolling hills and scenic countryside, Stow-on-the-Wold offers an old English village experience, rich in history and Cotswold charm.

Seat Price £41.00

Also pick  
up points  
(A, B, C, E, F)

Pickup starts  
08:15

Home around  
18:00

WEDNESDAY  
1st JULY



### Great Bedwyn Canal Boat Trip

Enjoy a leisurely day navigating the beautiful **Kennet and Avon Canal**. You will be encouraged to have a go at steering, and if you wish, help navigating the locks. Should the weather be inclement, you can sit inside the boat which benefits from central heating, a flushing WC and a fully equipped galley, with tea and coffee making facilities. There will be no stops for lunch, so please bring food you can prepare in the galley. **FYI: The canal boat trip is included in the seat price.**

Seat Price £67.00

Also pick  
up points  
(A, B, D, E, F)

Pickup starts  
08:00

Home around  
17:30

THURSDAY  
2nd JULY

### Seaton Tramway and Lyme Regis New for 2026

Explore the **Seaton Tramway**, a unique journey through East Devon's picturesque Axe Valley. Travel on a narrow-gauge line between the coastal resort of Seaton and the historic town of Colyton, taking in nature reserves and incredible views of the abundant birdlife. **FYI: Tram included in seat price.** We will then visit **Lyme Regis** which boasts breath-taking scenery, making it a sparkling resort for all seasons. Sometimes called the Pearl of the Jurassic Coast, it is set in an area of outstanding natural beauty. With its sandy beach and quaint high street, it is the quintessential English seaside town. Highly recommended, for those who would like to hear more about the history of Lyme Regis, is a boat trip from the Cobb. You must book these boat trips online in advance.

Seat Price £58.00

Also pick  
up points (O, P)

Pickup starts  
08:15

Home around  
18:00

FRIDAY  
3rd JULY

### Dorchester or Weymouth

Explore the historic market town of **Dorchester**, where a blend of old and new awaits. Shop your favourite high street brands and discover unique finds at specialist shops. You can also visit the modern Brewery Square for a mix of shopping and leisure, or delve into the town's rich history at one of its five museums. Don't miss the chance to see Poundbury, Prince Charles's architectural vision of a 21st-century town. With its intriguing design and pedestrian-friendly streets, it's a unique place to explore. Just a short drive away is **Weymouth**, one of the UK's most beautiful coastal resorts, known for its sunny and warm climate. Here, you'll find everything you'd expect from a classic seaside town, don't forget your sunglasses and bucket and spade.

Seat Price £36.00

Also pick  
up points (O, P)

Pickup starts  
08:15

Home around  
17:30

TUESDAY  
7th JULY

### Lyme Regis

Discover **Lyme Regis**, a sparkling resort for all seasons, famous for its breathtaking scenery and special mystique. Known as the "Pearl of the Jurassic Coast," it's set in an area of outstanding natural beauty. The town's iconic Cobb and harbour, featured in the film *The French Lieutenant's Woman*, are perfect for a scenic stroll. Or wander around Langmoor and Lister Gardens, a series of award-winning public gardens which overlook the town and coast. All in all, with its sandy beach, gardens and quaint high street, Lyme Regis is the quintessential English seaside town. For a deeper dive into the town's history, we highly recommend a boat trip from the Cobb. You can book a midday trip with either Lyme Bay Boats or Jurassic Boat Trips. The tickets cost around £15.

Seat Price £41.00

Also pick  
up points (O, P)

Pickup starts  
08:15

Home around  
17:30

WEDNESDAY  
8th JULY

### Windsor and Boat Cruise with Luxury Cream Tea served on china

A beautiful unique destination, crowned by stunning **Windsor Castle**, which is the largest and oldest inhabited castle in the world and an official residence of His Majesty the King. You will have time to explore the town of Windsor and Eton, which is a short walk away, before enjoying a **Boat Cruise** which departs from Windsor Promenade. Once on board you will pass Windsor Racecourse, Boveney Lock, Sutherland Grange, The Willows and Bray Film Studios, Oakley Court, Queen's Eyt and Monkey Island. Whilst taking in the beautiful sights you will be served a delightful Luxury Cream Tea, served on china plates. What a lovely way to spend an afternoon! **FYI: Cruise and cream tea are included in your seat price.** Please note the onboard bar only takes cash.

Seat Price £77.00

Also pick up points (A, B, C, D)

Pickup starts 08:15

Home around 17.30

SUNDAY  
12th JULY

### Steamship Shieldhall Solent Cruise with Shanty Band New for 2026

Steam down Southampton Water to the Solent, passing cruise ships in berth. On board for your entertainment will be a Shanty Band "Jim Spice and The Main Brace" who will regale you with a lively litany of sea shanties! See the impressive engine room with its original steam engines at work and the bridge, with its traditional instruments and gleaming brass work, admire the ship's steam assisted steering gear (similar to that used on Titanic) Walk the teak decks or relax in the Saloon with its wide range of refreshments including tea/coffee, real ale, a range of bottled beers, wine and hot and cold food and ice creams. Enjoy a nostalgic afternoon onboard one of the few remaining Steamships still operating. **FYI: The cruise and entertainment are included in your seat price.**

Seat Price £83.00

Also pick up points (H, I, J)

Pickup starts 11.30

Home around 19.30

MONDAY  
13th JULY

### Henley-on-Thames and Tour of Mapledurham House New for 2026

**Henley-on-Thames** is considered to be one of the most beautiful English market towns with many interesting historical buildings, set in a charming riverside location with a bustling High Street. Although renowned for the world famous Henly's rowing regatta, it has so much more to offer. We will then visit **Mapledurham House**, a 12th century family house and farming estate. Here you will take a guided tour of the house, which features many historical paintings and hidden priest holes. The grounds boast two beautiful magnolia trees, reputed to be the oldest pair in England. The tour also includes the watermill, which is featured in the film "The Eagle Has Landed" and appears on the cover of Black Sabbath's debut album. **FYI Tour and house entrance is included in the seat price.**

Seat Price £75.00

Also pick up points (A, B, C, D)

Pickup starts 08:15

Home around 18.30

TUESDAY  
14th JULY



### Boat Cruise from Poole to Swanage with Steam Train Ride

We will arrive at Poole Quay to board the 10.30am Cruise from **Poole Harbour to Swanage**. This 1-hour cruise with live commentary will pass by some of Dorset's greatest landmarks. Your boat ticket includes the steam train from Swanage to Norden or Corfe, where you could explore the ruins of Corfe Castle or Corfe village, or return to explore Swanage and all it has to offer. You will then be collected from Swanage. **FYI: Your Sea/Train ticket is included in your seat price.**

Seat Price £66.00

Also pick up points (O, P)

Pickup starts 08:30

Home around 17.30

THURSDAY  
16th JULY

### Horse-drawn Canal Boat Cruise and Marlborough

The morning will be spent in the beautiful historic town of **Marlborough**, where you will find big name chain stores nestled amongst quirky side arcades with an extensive choice of highly individual shops. There are also many cafes and restaurants to refuel before we set off to Kintbury, to board a leisurely 2-hour **Horse-Drawn Canal Boat Cruise**. The cruise takes you through what is often spectacular scenery along the Avon and Kennet canal. The boat has an onboard toilet and a well-stocked bar, serving tea, coffee, soft and alcoholic drinks, crisps, biscuits and confectionery, and there is also a selection of souvenirs and gifts. Don't miss this opportunity to step back in time on one of England's few remaining horse drawn boats. **FYI: Your cruise is included in your seat price.**

Seat Price £57.00

Also pick up points (A, B, C, E, F)

Pickup starts 08:15

Home around 17.30

FRIDAY  
17th JULY



### Cirencester on Market Day and Bibury

**Cirencester** is a traditional Cotswold market town with many independent shops and cafes. Its market square is dominated by the cathedral like Parish Church of St. John Baptist, one of the largest in England. There is a weekly Antiques & Collectors' Market in Cirencester's Corn Hall every Friday, as well as a street market. Our tour of the Cotswolds will also include a stop in **Bibury**, built from honey coloured Cotswold Stone and known for its charm and famous Arlington Cottages.

Seat Price £41.00

Also pick up points (A, B, C, E, F)

Pickup starts 08:15

Home around 18:00

SATURDAY  
25th JULY

### ABBA Voyage, ABBA Arena, London – MATINEE

Experience the magic of ABBA in a whole new way at **ABBA Voyage**. This groundbreaking concert seamlessly blends cutting-edge technology, spectacular lighting, and some of the most beloved songs ever written. Step into a stunning purpose-built arena where the legendary group appears as digital avatars in a performance that truly has to be seen to be believed. Get ready to be transported back in time with a show that is both nostalgic and futuristic. Our allocation is 22 seated tickets. If you would prefer dance floor tickets please call and we will try help, if they are available. **Book your tickets now, they will sell fast!** To mark the third anniversary of Abba Voyage, new tracks have been added to the **set list**. **FYI: Show tickets are included in your seat price.**

Seat Price £125.00

Also pick up points (A, B, C, D)

Pickup starts 10.00

Home around 20.30

WEDNESDAY  
29th JULY

### Bridport and West Bay

**Bridport** is a thriving market town especially on Wednesdays when the market is operating. The market consists of a broad selection of traders lining the two main streets - supplemented by lots of independent shops and antique "warehouse" type premises which are full of items to browse as well as a large craft shop. We will then travel to **West Bay**, a charming fishing village on the Jurassic Coastline. West Bay offers some stunning landscape to explore and breath-taking views of its dramatic coastline, its popularity has risen following the drama Broadchurch starring David Tennant and Olivia Coleman. On route we will stop at the Crafty Barn and Tearoom, a little gem tucked away in the Dorset countryside near Milton Abbas and a favourite with our regular travellers.

Seat Price £38.00

Also pick up points (O, P)

Pickup starts 08:15

Home around 17:30



THURSDAY  
30th JULY

### Abbotsbury Subtropical Gardens & Westbay with scenic Jurassic coastal drive [New for 2026](#)

**Abbotsbury Subtropical Gardens** are spectacular at this time of year. Bright splashes of colour from hydrangeas, agapanthus, and exotic blooms contrast beautifully with the dense greenery. Sunlight filters through palm fronds and reflective ponds, casting cool blue and silver tones, contrasting with other vibrant colours, a vivid, immersive paradise of warmth and life. We will then take a scenic drive along the beautifully scenic Jurassic coast to visit West Bay near Bridport, a picturesque seaside harbour village framed by golden sandstone cliffs. Known for its dramatic coastal views, and charming fishing village atmosphere. A perfect mix of natural beauty and seaside character. **FYI: Entrance to the gardens is included in the seat price**

**Seat Price £52.00**

**Also pick up points (O, P)**

**Pickup starts 08:15**

**Home around 17.30**

FRIDAY  
31st JULY

### Mama Mia at the Bournemouth Pavilion [New for 2026](#)

**Get ready for the ultimate feel-good experience** as the world's sunniest and most exhilarating musical bursts onto the stage at the Bournemouth Pavilion. Set on a stunning Greek island, this heartwarming story of love, friendship, and identity is told through the timeless songs of **ABBA**. Follow Sophie's quest to find the father she's never known, a search that brings three men from her mother's past back to the island on the eve of a wedding no one will ever forget. **MAMMA MIA!** is irresistibly funny, uplifting, and packed with all the hits we know and love. Whatever your age, you're guaranteed to have the time of your life! On route to the theatre, we will take a scenic drive through some picturesque parts of the new Forest. **FYI: Your ticket is included in your seat price.**

**Seat Price £79.00**

**Also pick up points (K, L, M, N)**

**Pickup starts 17.00**

**Home around 23.00**

**Please note: All information and prices relating to entrance fees are correct at the time of going to print but can be subject to change.**

## FAQS

**How and when do I pay?** Payment is due at the time of booking, once booked, you will receive a confirmation by email (or by text if you don't have an email address) with payment instructions. If payment is not received within 5 working days of receipt of your confirmation, your seat will be released for resale. Payment can be made by card, bank transfer, or cheque.

**Do you charge extra for cheque or credit / debit card payments?** For credit / debit card payments, a £2.00 per booking fee applies. Please note that we are unable to accept American Express cards. Payment by cheque and online payments by bacs are free.

**What if I do not have an email?** If you don't have an email, you can call the office on 01722 66 55 44. They won't be able to send you an email confirmation, but they can: Text the confirmation to your mobile phone, or Post the confirmation to you if you request it (there is an additional £1.00 charge for postal confirmations).

**When will I be informed of my pick-up point and time?** Please refer to page 6 for this information.

**Can I reserve a seat?** Unfortunately, seat reservations are not available. However, if you have booked multiple seats, we'll ensure that you and your travelling companions are seated together. You'll be able to choose from the available seats when you board the bus.

## FAQS

**Will there be regular comfort stops?** Regular comfort stops will be made depending on the day's destination and overall travelling time. We will not travel for more than 2.5 hours without a stop. If at any point a passenger requires an urgent stop, the driver will find the next suitable location. On most trips, when time allows, we will stop for approximately 30 minutes at a garden centre or café enroute to the destination. For longer journeys we will make a shorter 15-minute stop at some services. Return journeys will include stops if they exceed 2.5 hours or upon request.

**How long will we have at the destination?** We endeavour to allow 4 hours of sightseeing at a destination. i.e. Days out to Cities, Stately Homes, Museums etc. If we offer two destinations in one day, it will be 2 hours at each.

**Will we be dropped off close to the event / show / town centre / attraction?** As we only operate Mini-coaches we are usually able to get you to the front door of the event / attraction rather than park in coach parks which can be some way from the venue.

**Do you offer concessions or discounts?** We do not offer concessions for seniors. We do offer a discount for bookings of 10 or more. For every 10 seats booked, you will receive a free seat. Gather 10 of your friends, family, or colleagues and take advantage of a free day out.

**Am I able to bring a wheelchair or mobility scooter?** Our Mini-coaches are not wheelchair accessible and do not have the capacity to take any motorised Mobility Scooters. We have room to store one-fold down wheelchair or two mobility walking aids, if the trip is at full capacity. If you intend to bring a mobility walking aid with you, please mention this at the time of booking to ensure we will have space to accommodate it.

**What if I need to cancel my day trip booking?** We offer a full refund if we are informed of the cancellation 28 days prior to the date of travel. There is then a staged percentage refund between 28-14 days but if less than 14 days' notice is given, then no refund is offered. (See our full T&Cs for staged refund amounts on our website) Refunds only relate to the seat price paid, admissions/meals/guides etc, are not refundable as these are paid for by the company in advance of travel. You may sell or gift your ticket if you are not able to travel, as long as you make the office aware of the change of name and pick up location.

**Where can I pick up a leaflet or brochure?** Our newly formatted 2026 biannual folded leaflet will be distributed from over 140 sites within a 10-mile radius of Salisbury. The full list of where these can be found is on our website [www.daytripsonline.co.uk](http://www.daytripsonline.co.uk). A convenient central pick-up point for Salisbury is the Salisbury Tourist Information Office, Fish Row, Salisbury and in Amesbury you will find them in Amesbury History Museum, Church Street, Amesbury. You can also find a more informative A5 brochure in digital form on our website. An A5 brochure can be purchased. These cost £2.00 if posted to you or £1.00 if purchases from your driver on the day of a trip.

## OUR NEXT LEAFLET

### Don't Miss Out on Great Days Out in the Second Half of 2026!

Our August–December leaflet is packed with exciting adventures for every season. Enjoy seaside resorts and outdoor events to make the most of the Great British summer.

As we move into autumn and winter, look forward to our ever-popular Autumn Leaves Tours, fantastic shopping trips to get a head start on your Christmas gifts, and visits to Christmas markets and festively decorated stately homes.

Make 2026 a year to remember with Great Days Out – there's something special waiting for everyone!

## FOR YOUR COMFORT

We operate a strict no smoking policy in all our vehicles. The use of electronic cigarettes are not permitted. In consideration of your fellow passenger, we ask that the use of mobile phones is restricted for emergencies only. No pets (except guide dogs) are permitted to travel on the bus. Where passengers consume food (fast food e.g. fish and chips and take away food not permitted) or drink on board (alcohol not permitted) we ask you to ensure that other passengers are not inconvenienced, protection is provided against spillage and litter is cleaned up afterwards.

## WHEELCHAIRS AND ROLLATORS

We are able to carry light weight wheelchairs and rollators subject to them being able to be placed in our storage box. Please advise the office at the time of booking if you have one as there is a limited amount of space and we can only take two on any one trip. Arrowline Minibuses Ltd will not accept liability for any damage to personal property whilst stowed or stored in the vehicle.

## CANCELATIONS, REFUNDS OR AMMENDMENTS

### By the Company

Should the Company be forced to cancel an excursion due to insufficient bookings, all monies paid by passengers for that particular excursion will be refunded in full. There after the company shall be exempt from any further liability. Alternatively, you can transfer your monies to another trip or leave it in credit to use for a forthcoming trip.

**PLEASE NOTE THAT EXCURSIONS WILL NOT GO AHEAD WITH LESS THAN 12 PASSENGERS DUE TO THE COSTS INVOLVED IN OPERATING THE SERVICE.**

### By the Passenger

- A. Should you wish to cancel 28 days prior to the date of travel you will receive a full refund of the COACH FARE ONLY. Admissions, meals and guides fees etc, are not refundable as these are prepaid by the company in advance. You may nominate a substitute but any change to the pickup arrangements must be agreed by the Company.
- B. Should you wish to cancel between 21-27 days prior to the date of travel a 50% refund of the COACH FARE ONLY will be issued. Admissions, meals and guides fees etc, are not refundable as these are prepaid by the company in advance.
- C. Should you wish to cancel between 14-21 days prior to the date of travel a 25% refund of the COACH FARE ONLY will be issued. Admissions, meals and guides fees etc, are not refundable as these are prepaid by the company in advance.
- D. For cancelations notified to the Company within 14 days of the date of travel, no refund will be issued.

## GENERAL TERMS AND CONDITIONS

### GENERAL TERMS AND CONDITIONS

**1. Seat Belts** It is a legal requirement that seatbelts must be worn at all times when travelling. If you are unable to fit our seatbelts, we will supply a seatbelt extension. Should this not suffice, sorry you cannot travel.

**2. Third party suppliers** Where a refreshment stop is taken, no responsibility can be taken for the standard or quality or service of catering establishments. Complaints should be taken up directly with the supplier. We strongly recommend you bring along a snack. We cannot take responsibility for availability or standards of conveniences at stops.

**3. Cancelled Trips** No responsibility can be accepted for any cancellation of any advertised trip for reasons outside our control including insufficient passengers, weather conditions and fuel shortages.

**4. Behaviour** We will terminate a passenger's journey in the event of unsociable/unreasonable behaviour that impacts on the enjoyment of fellow passengers.

**5. Errors or Omissions** Although every effort has been made to ensure the accuracy of the information in our brochure is correct at the time of printing, we cannot accept responsibility for any errors made or omissions. The company cannot be held responsible for any entrance prices quoted for your information FYI being incorrect. We research these details via the websites of the destinations we visit at the time the brochure goes to print but these prices may change by the time the trip takes place. We also ensure that on the days we visit towns and cities, there are no known events taking place that will detract from the enjoyment of your day i.e. marathons, parades or carnivals that require road closures or traffic control. However, the relevant tourist information centres are not always aware of all the forth coming years events when we print our brochure.

**6. Complaints** Complaints should be made in writing within 7 days of the excursion to our company office at 13a Windsor Road, Salisbury, Wiltshire, SP2 7DX. The company will reply within 14 days.

**7. Vehicle to be provided** Arrowline Minibuses Ltd reserves the right to substitute another vehicle (including those of another operator) or ancillary facilities for all or part of the excursion subject to such substitutes being of at least equivalent quality.

**8. Breakdowns, Delays & Weather Conditions** Arrowline Minibuses issues approximate pick up / drop off and journey times in good faith. However, as a result of a breakdown or traffic congestion, or any other events beyond the reasonable control of the company, journeys may take longer than predicted and in those circumstances the company will not be liable for any loss or inconvenience suffered by passengers as a result. The approximate return time stated is a guide time under normal conditions and we cannot be held responsible if we have to deviate from this time.

**9. The company will operate in all reasonable and safe weather conditions.** However, in the event of serious weather conditions, for example heavy snowfall, no refunds can be given for cancellations. In these circumstances, each claim will be assessed on an individual basis.

**Our full Terms & Conditions can be found on our website.**



ALL PLASTERING WORK  
UNDERTAKEN

**Jorden Lowe**

07881227546

EMAIL: [jloweplastering@outlook.com](mailto:jloweplastering@outlook.com)



**FREE QUOTATIONS:**

- Dry lining
- Skimming
- Patch and Repair
- Rendering
- K Rend
- Overboarding ceilings

**FULLY INSURED**



**John Jeffery  
of Salisbury**

Established 1902

**Residential and Commercial Agents  
Residential Letting and Managing Agents**

**We are an independent, family run  
business offering a professional  
and friendly approach to all your  
property requirements**

**42 Castle Street Salisbury SP1 3TT**

**Tel : 01722 335337**

**[properties@johnjeffery.co.uk](mailto:properties@johnjeffery.co.uk)**



**The Fox and Goose Blandford Road Coombe Bissett  
Salisbury SP5 4LE Tel: 01722 718437  
Email: [foxandgoosecoombebissett@gmail.com](mailto:foxandgoosecoombebissett@gmail.com)  
[www.foxandgoose-coombebissett.co.uk](http://www.foxandgoose-coombebissett.co.uk)**



**Trip Advisor Certificate of Excellence winner**

**A warm and friendly atmosphere where all are welcome,  
even well behaved dogs get spoilt.**

**Open All day**

Food served from 12 noon until 9pm

Homemade Specials and Traditional Sunday Roasts

Log Fire in Winter

Large Beer Garden and Play Area in Summer

**Open Music Nights** on the third Thursday of each month  
all welcome to come and play