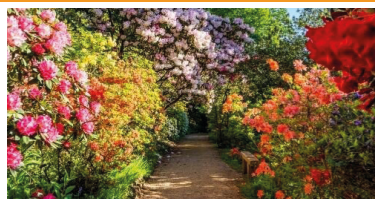


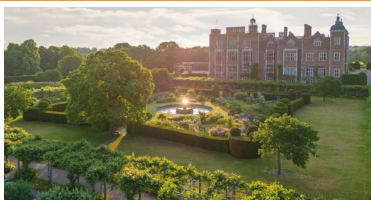
GREAT DAYS OUT

40
NEW TRIPS
IN 2025

**TURNING
DAY TRIPS
INTO
FRIENDSHIPS**



**DAY TRIPS FROM SALISBURY TO TOWNS, CITIES &
ATTRACTIONS IN THE SOUTH OF ENGLAND**



HOME PICK UP AND DROP OFF SERVICE

**Whether you're young or old, whatever your interests are, there
will be a Great Day Out for you in this brochure!**

(Door to Door service is only available from postal addresses within Salisbury City Limits)

Booking office open from 09.00 - 15.00 Monday to Friday

01722 66 55 44

WHO ARE GREAT DAYS OUT?

Great Days Out is a service operated by Arrowline Minibuses Ltd. We have been serving Salisbury and the surrounding area since 2000 and since 2015 we have been providing a day excursion program for individuals and groups alike. We offer a door-to-door service, if geographically possible, and achievable within a reasonable time frame, usually picking you up from your road. This is a service only available to passengers living within the city limits. For those living further afield we will suggest the nearest pick-up point to your home on our pick-up route where we could meet you, having made your own arrangements to get to that point. The ADDITIONAL PICK-UP POINTS can be found below.

PICK UP POINTS AND TIMES

You will be contacted to arrange your pick-up point and time **48hrs prior to the day of travel**. Passengers living within the city limits will be picked up from and returned to their home address. This will be from their door if necessary. However, we would appreciate your cooperation and ask that you wait at the end of your road to speed up the pickup process so passengers are on the bus for as little time as possible prior to reaching their destination. Please be at the pre-arranged point at least 10 minutes prior to your pick-up time. If upon arriving at the pick point, you are not there, the driver will wait for 5 minutes after the pre-arranged time before pulling away. Your driver will try to contact your home or mobile phone if you have one before doing so. No refund will be given to passengers that fail to turn up or turn up after the 5-minute grace period. Nor shall the company be held responsible for the late arrival of the minibus due to circumstances outside of our control (i.e. traffic and weather conditions). Return times shown in the brochure are merely as a guide as the drop off route may take up to 45 minutes to complete.

ADDITIONAL PICK-UP POINTS

To make our tours more accessible to a wider audience we also have additional pick-up points on route to that day's destination. They are as follows and are shown on each trip.

- A. Longhedge (Bus stop on Longhedge roundabout)
- B. Amesbury Main Carpark (Bus stop at the entrance of)
- C. Andover (Bus stop on Weyhill Road, outside the Aldi supermarket)
- D. Durrington & Larkhill (Bus stop opposite the Stonehenge Inn)
- E. Netheravon (Dog and Gun Inn car park)
- F. Winterslow (Bus stop outside the old Pheasant Hotel on the A30)
- G. Alderbury (Clarendon crossroads bus stop)
- H. Whiteparish (Brickworth corner café)
- I. Landford (Bus stop on the A36 opposite the Landford Poacher Pub)
- J. Charlton- All-Saints (Bus stop on the A338)
- K. Downton (Bus stop outside the Bull Inn)
- L. Breamore (Village Hall car park)
- M. Fordingbridge (Bus stop opposite the Surma Valley Indian Restaurant)
- N. Coombe Bissett (Bus stop outside the Fox & Goose Pub)
- O. Six Penny Handley (Bus stop past the roundabout on the A354)
- P. Wilton (Lay by just past Wilton Garden Centre)
- Q. South Newton (Bus stop opposite St Andrews Road)
- R. Steeple Langford (Bus stop before crossroads on Salisbury Road)
- S. Shrewton (Shrewton Sports and Social Club, car park)

HOW TO BOOK

Please visit our website at www.daytripsonline.co.uk and complete a booking request form, or send an email to gdobookings@gmail.com along with your contact details and the name and date of the trip you wish to book. Additionally, you can make a reservation over the phone by calling 01722 66 55 44.

PAYMENT

Please note that payment is due at the time of booking. If you book through our website, www.daytripsonline.co.uk you can pay using a debit or credit card via our online payment portal. Payments can also be made by cheque; please make cheques payable to **Arrowline Minibuses Ltd** and send them to Great Days Out, 13a Windsor Road, Salisbury, Wiltshire, SP2 7DX. Additionally, you may opt for a bank transfer (bank details will be provided upon request).

MAXIMISE YOUR MEMBERSHIP

Many of this year's trips are to stately Homes and Gardens which offer discounted or FREE entry to members of the following: **National Trust (NT)**, **Royal Horticultural Society (RHS)**, **English Heritage (EH)** and **Historic Houses (HH)**. So why not make the most of your membership and join us on any of these days. Without a car, many of these attractions are not easily accessible by public transport. So let us take you there.

- Chelsea Physic Garden – HH
- Chiswick House – EH
- Dunster Castle – NT
- Ham House and Gardens – NT
- Holmes for Gardens – RHS
- Hughenden Manor – NT
- Kew Gardens – RHS
- Kingston Lacy – NT
- Lulworth Castle - HH
- Mottisfont Abbey and Gardens – NT
- Petworth House and Park - NT
- RHS Wakehurst – NT
- RHS Wisley – RHS
- Sudeley Castle – HH
- Syon House – HH, RHS
- Waddesdon Manor – NT, RHS, HH

MEN of SALISBURY



**GREAT DAYS OUT
needs YOU!**

Very few of our customers are gentlemen, so with this in mind, our 2025 brochure includes a host of day trips which may appeal to you! Our trips are for everyone. We hope you find a trip that will be of interest to you amongst our wide variety of days out to Towns, Cities, Stately Homes, Castles, Palaces, Gardens, Theatres, Museums, Galleries, Carnivals, Canal Trips, Markets, Zoos, Craft Shows, Cemeteries, Boat trips and the Seaside. Why not join us for a day at the races? We are visiting **Sandown Park Racecourse** on Wednesday 24th July, **Goodwood Races** on Wednesday 24th September and **Bath Races** on Tuesday 30th September.

Other trips include:

Chelsea Barracks and the National Army Museum, London on Friday 25th April.

Beaulieu Motor Museum on Friday 16th May

Blenheim Battle of the Proms on Saturday 5th July

Highclere Battle of the Proms on Saturday 2nd August

Bovington Tank Museum on Wednesday 27th August

Twickenham Stadium Tour on Tuesday 7th October

Come on gentleman, we would appreciate your patronage. Why not join us on an enjoyable day out with other like-minded people, or come along to one of our coffee mornings for a chat and maybe suggest a future trip that would be of interest to you, we welcome all suggestions.

INDEX

MARCH

Wednesday 12th March – New for 2025

Introductory Coffee Morning in aid of Dementia UK

Wednesday 19th March

Bletchley Park (Station X)

Thursday 20th March – New for 2025

National Archives or Richmond-upon-Thames

Friday 21st March

The National Gallery and National Portrait Gallery

Saturday 22nd March

Stewarts Garden Centre and Lyminster

Thursday 27th March – New for 2025

Ideal Home Show and/or The Design Museum

Friday 28th March

Lacock and Bradford-on-Avon

APRIL

Friday 4th April – New for 2025

Chicago The Musical – Bournemouth Pavillion

Tuesday 8th April – New for 2025

Hillier Rosebourne Garden Centre and The Fairground Craft & Design Centre, Andover

Wednesday 9th April

Clarks Shopping Village and/or Wells

Thursday 10th April

Hughenden Manor

Saturday 12th April – New for 2025

Houses of Parliament (The Palace of Westminster) Guided Tour

Tuesday 15th April – New for 2025

Tulips at Arundel Castle or Chichester

Thursday 17th April – New for 2025

Dunster Castle and the West Somerset Steam Railway

Thursday 24th April – New for 2025

Thursday Market at Kempton Park Racecourse and Richmond-upon-Thames

Friday 25th April – New for 2025

Chelsea Pensioners Royal Hospital Chelsea, National Army Museum and Chelsea Physic Garden

Tuesday 29th April

Highgate Cemetery Tour and Longacres Garden Centre

Wednesday 30th April – New for 2025

Poole to Wareham Boat Cruise and Wareham

MAY

Sunday 4th May – New for 2025

Dionne Warwick: Don't Make Me Over Live performance, Bournemouth Pavilion

Tuesday 6th May – New for 2025

Holme for Gardens and Wareham, Dorset

Wednesday 7th May

Great Bedwyn Canal Boat Trip

Thursday 8th May – New for 2025

RHS Malvern Spring Festival

Friday 9th May – New for 2025

Madama Butterfly - featuring the Ukrainian Opera & Ballet Theatre Kyiv, Bournemouth Pavilion

Tuesday 13th May

RHS Wakehurst

Wednesday 14th May – New for 2025

Bowood House and Gardens and the Woodland Gardens

Thursday 15th May – New for 2025

Clevedon Pier with Guided Tour and Fish and Chips

Friday 16th May

Exbury Gardens or Beaulieu House and National Motor Museum

Wednesday 21st May

Great Days Out Coffee Morning in Aid of Dementia UK

Thursday 22nd May – New for 2025

Leonardslee Lakes and Gardens, Sculpture Park and Art Gallery

Friday 23rd May

Lulworth Cove and Lulworth Castle

Tuesday 27th May

Weald and Downland Museum or Chichester

Wednesday 28th May – New for 2025

Syon House, Gardens and Great Conservatory or Chiswick House and Gardens

INDEX

Thursday 29th May – New for 2025

Poundbury and Thomas Hardy Guided Tour, Dorchester

Friday 30th May – New for 2025

Sudeley Castle and Grounds with Private Guided Tour

JUNE

Tuesday 3rd June

Kew Gardens

Wednesday 4th June – New for 2025

Mottisfont Abbey and Gardens and Stockbridge

Thursday 5th June – New for 2025

Hatfield House with Guided Tour

Friday 6th June – New for 2025

Jurassic Coast Scenic Tour with Guide

Tuesday 10th June

RHS Gardens Wisley

Thursday 12th June

Dorchester or Weymouth

Saturday 14th June – New for 2025

Sheildhall Steamliner "Titanic Themed Cruise"

Tuesday 17th June – New for 2025

Winchester with a Blue Badge Guide

Friday 18th June

Lyme Regis

Thursday 19th June

Arundel (Carpet of Flowers) or Chichester

Saturday 28th June – New for 2025

Blenheim Palace, Park and Gardens including entry to the Flower Show

JULY

Wednesday 2nd July

Horse-Drawn Canal Boat Cruise and Marlborough

Thursday 3rd July

Great Bedwyn Canal Boat Trip

Friday 4th July

Boat Cruise from Poole to Swanage with Steam Train ride

Saturday 5th July – New for 2025

Battle Proms Picnic Concerts – Blenheim Palace

Wednesday 9th July

Bridport and West Bay

Thursday 10th July

Marwell Zoo or Winchester

Friday 11th July – New for 2025

Windsor and Boat Cruise with Cream Tea

Tuesday 15th July

Brighton

Wednesday 16th July

Great Days Out Coffee Morning in Aid of Dementia UK

Thursday 17th July

Bennetts Water Gardens and Weymouth

Friday 18th July – New for 2025

Cheddar Caves and Axbridge

Tuesday 22nd July

Swanage and Holme for Gardens

Wednesday 23rd July

Sculpture by the Lakes and Moreton

Wednesday 24th July – New for 2025

Sandown Park Afternoon Races

Sunday 27th July

Camden Market or London Zoo

Monday 28th July

Brookwood Cemetery

Tuesday 29th July

Athelhampton House and Tolpuddle Martyrs Museum

Wednesday 30th July – New for 2025

Dorset Queen Afternoon High Tea Cruise from Poole Harbour

AUGUST

Saturday 2nd August – New for 2025

Battle Proms Picnic Concerts – Highclere Castle

Monday 4th August

Sidmouth Folk Festival

Wednesday 6th August

Sidmouth Folk Festival and (optional) Sidmouth Donkey Sanctuary

Tuesday 12th August

Cotswolds Tour

Wednesday 13th August

Poppy Factory Tour and Kingston-upon-Thames

INDEX

Thursday 14th August
Dorchester **or** Weymouth

Tuesday 19th August
Lyme Regis

Wednesday 20th August
Buckingham Palace

Thursday 21st August
Oxford

Wednesday 27th August
Monkey World **or** The Tank Museum, Bovington

Thursday 28th August
Wells **and** Scenic Drive through Cheddar Gorge

Friday 29th August
Cirencester **and** Honey Street Mill

Saturday 30th August
Spitalfields Market **or** the British Museum

SEPTEMBER

Tuesday 2nd September – New for 2025
Christchurch followed by a Sunset Fish and Chips Cruise around Poole Harbour

Wednesday 3rd September – New for 2025
Christchurch followed by a Sunset Fish and Chips Cruise around Poole Harbour

Thursday 4th September
Great Bedwyn Canal Boat trip

Monday 15th September – New for 2025
Sound of the 60's Live – Hosted by Tony Blackburn OBE, Bournemouth Pavilion

Tuesday 16th September
Oxford

Wednesday 17th September
Great Days Out Coffee Morning in Aid of Dementia UK

Thursday 18th September
Petworth House and Park

Monday 22nd September
London Museums

Tuesday 23rd September
Highgate Cemetery Tour **and** Longacres Garden Centre

Wednesday 24th September – New for 2025
Goodwood Afternoon Races **or** Chichester

Thursday 25th September – New for 2025
The 39 Steps – Tivoli Theatre Wimborne

Tuesday 30th September – New for 2025
Bath Races **or** Bath

OCTOBER

Thursday 2nd October
Bletchley Park (Station X)

Tuesday 7th October – New for 2025
Twickenham town **and** Stadium Tour

Wednesday 8th October – New for 2025
Syon House, Gardens and Great Conservatory **or** Chiswick House and Gardens

Thursday 9th October
The History of Salisbury with Guest Speaker John Abbot (ex-Mayor of Salisbury)

Friday 10th October
Cirencester **and** Swindon Outlet

Saturday 11th October
The Knitting & Stitching Show at Alexandra Palace

Tuesday 14th October – New for 2025
Kingston Lacey **and** Wimborne Minster

Thursday 16th October
Rockbourne Christmas Fair, Salisbury Racecourse **and** Clarks Shopping Village, Street

Friday 17th October – New for 2025
Jane Austen Tour **with a Blue Badge Guide**

Saturday 18th October – New for 2025
Houses of Parliament (The Palace of Westminster) Guided Tour

INDEX

Sunday 19th October

Camden Market **or** London Zoo

Wednesday 22nd October

Marlborough **and** Hungerford

Thursday 23rd October

National History Museum at Tring **and** Longford
Park Farm shop, Café **and** Nursery

Wednesday 29th October – New for 2025

Autumn Leaves New Forest Tour with Cream
Tea at Burley **and** visit to Lymington

Thursday 30th October

London Museums

NOVEMBER

Saturday 1st November

Somerset Carnival, Bridgwater (**with covered
Grandstand seats**)

Tuesday 4th November

Imperial War Museum **or** Tate Modern

Wednesday 5th November

Hampton Court Palace **and/or** Kingston-upon-
Thames

Thursday 6th November

Clarks Shopping Village, Street **and/or**
Glastonbury

Tuesday 11th November – New for 2025

Hillier Garden Centre The Fairground Craft &
Design Centre, Andover

Thursday 13th November

Gunwharf Quays **and** Historical Dockyards,
Portsmouth

Tuesday 18th November

The National Gallery and National Portrait
Gallery

Wednesday 19th November

Great Days Out Coffee Morning in Aid of
Dementia UK

Thursday 20th November

Kew Gardens Christmas Lights

Friday 21st November – New for 2025

Ham House **and/or** Richmond-upon-Thames
Christmas Shopping

Saturday 22nd November

Bicester Shopping Village **or** Oxford

Tuesday 25th November – New for 2025

RHS Glow Wisley

Thursday 27th November

Waddesdon Manor Christmas Lights

Friday 28th November

Gloucester Quays Victorian Christmas Market

Saturday 29th November – New for 2025

ABBA Voyage, ABBA Arena, London

Sunday 30th November – New for 2025

Riverdance 30: The New Generation at the BIC

DECEMBER

Thursday 4th December

Gloucester Quays Victorian Christmas Market

Friday 5th December

Winchester Christmas Market

Saturday 6th December – New for 2025

Battersea Power Station Christmas Shopping
and/or Kings Road

Tuesday 9th December

Kew Gardens Christmas Lights

Wednesday 10th December

Longleat Safari, House and Christmas Lights

Thursday 11th December

Bath Christmas Market

Friday 12th December

Great Days Out Christmas Lunch at The Red
Lion Hotel, Salisbury

**Remember there are only 16 seats available for each trip so
please book early to avoid disappointment.**

WHAT'S NEW THIS YEAR?

The Great Days Out team are always looking to introduce new days out and experiences, to offer more variety to a wider audience and to enhance the enjoyment for our customers.

To this end we have 40 new trips/destinations in this year's brochure, with new experience days out to Horse Race meetings, Air shows, Blue Badge guided trips and two evenings of entertainment at Battle of the Proms events.

BROCHURE CONTENT

Exciting News for 2025! This year, we are thrilled to offer **120 trips—double** the number we ran in 2024! To fit all these amazing experiences into our brochure, we've streamlined the descriptions of each trip. But don't worry—there's plenty more detailed information available online. Visit **www.daytripsonline.co.uk** for comprehensive details about every trip.

COFFEE MORNINGS

Another first this year is the **'Great Days Out' Coffee Morning** in aid of Dementia UK. We hope that our customers, **old and new**, will come along to help us support this very worthy cause. It will be a chance to meet the team from 'Great Days Out', have a chat and ask any questions you may have about our trips. To also renew friendships with passengers you may have met on previous trips and meet new people. Our coffee mornings will take place at Salisbury Methodist Church, St Edmunds Church Street, Salisbury, SP1 3EF from 10:00am – 12:00pm. They will be taking place on Wednesdays, on the following dates. [12th March - 21st May - 16th July - 17th September - 19th November] We would appreciate you letting us know if you intend to attend any of these mornings so we have an idea of how many to cater for, thank you.

EVENING WITH A LOCAL SPEAKER

Also, this year we are experimenting with a new idea, which we hope will appeal to our customer base and offers another opportunity to meet up and enjoy an interesting evening of enlightenment and discussion. We will be gathering at Salisbury Methodist Church, St Edmunds Church Street, Salisbury, SP1 3EF on the evening of Thursday 9th October at 18.45. Our guest Speaker will be local historian and ex-Mayor of Salisbury John Abbott. The topic for the evening is the Old Friary and the part it played in moulding the history of Salisbury. We would like as many people as possible to attend, then if it is a success, we will put other evening speakers in our 2026 itinerary.

'GREAT DAYS OUT' CHRISTMAS LUNCH

At the Red Lion Hotel, Salisbury on Friday 12th December 2025

Another first for us this year is a Christmas lunch, which will be held at The Red Lion Hotel, Milford Street, Salisbury, which is purportedly the oldest purpose-built hotel in Europe. This will be another opportunity to meet up with friends and fellow travellers over a 3 course Christmas lunch. There will be a pianist accompaniment and after lunch, a solo singer will round off the afternoon with some well-known favourites and seasonal songs. Please come along, pull a cracker and get into the Christmas spirit with our live entertainment and a complimentary glass of bubbly.

THEATRES & SHOWS

To continue to try and improve our service and offer other opportunities for our customers to meet people and forge new friendships we intend to launch a 'Theatre & Show Club' in 2026. So, if you are interested in the theatre or shows please register your interest via email at gobookings@gmail.com. If there proves to be a demand for it, we will then arrange the tickets and transport to see matinees and evenings shows at some the South's Theatres and event venues.

WEDNESDAY
12th MARCH

Please join us for our first **'Great Days Out' Coffee Mornings** in aid of **Dementia UK** at Salisbury Methodist Church, St Edmunds Church Street, Salisbury, SP1 3EF from 10:00am – 12:00pm. We hope that our customers, **new and old** will come along to help us support this very worthy cause. This will be a chance for new customers to meet the team from 'Great Days Out', have a chat, and ask any questions you may have about our trips. We would appreciate you letting us know if you intend to attend, so we have an idea of how many to cater for, thank you. **Coffee/Tea and Cake or biscuits £5.00 with the proceeds going to Dementia UK**

10:00am – 12:00pm
at Salisbury
Methodist Church



WEDNESDAY
19th MARCH

Bletchley Park (Station X) Also running on the 2nd October

This is an amazing day out where you will be in awe of the incredible people that worked in secret at Bletchley Park. Known as the home of the code breakers and where Colossus, the world's first electronic computer was built to help decipher the Lorenz-encrypted (Tunny) messages sent via the Enigma machine between Hitler and his generals during World War II. The work done at this site was a huge contributing factor which helped bring an end to the Second World War. A truly thought-provoking day out. **FYI Adults: £25.50 Seniors: £23.00 Book online for a 10% discount on these prices. Please book to arrive at 12.00.**

Adult £38.00
Child £36.00
Pick up points
(A,B,C)
Pickups from
08.15
Home around
18.30

THURSDAY
20th MARCH

National Archives or Richmond-upon-Thames, London

The National Archives is the official archive and publisher for the UK government for England and Wales. It is the guardian of some of our most iconic national documents, dating back over 1,000 years. If you are researching the history of your family, or of any subject, there is no better place to visit to gain access to what you require. Alternatively, you can visit Richmond-upon-Thames, one of London's most attractive shopping centres. Here you will find a wide range of independent shops, restaurants and cafés set in the heart of the village, providing a wonderful selection of unusual gifts and culinary delights. Panoramic views of the Thames Valley and London can be viewed from King Henry's Mound.

Adult £38.00
Child £36.00
Also pick up
point (A,B,C)
Pickups start
08.15
Home around
18.30

FRIDAY
21st MARCH

The National Gallery and National Portrait Gallery (Also running on the 18th November)

This exceptional Art Gallery has an outstanding collection of paintings from the world's most famous artists. Masterpieces from Vincent Van Gogh, Leonardo Da Vinci, Monet, Caravaggio and Vermeer to name but a few. Alternatively, you may wish to visit the **National Portrait Gallery**, or both, as they are within minutes of each other. The National Gallery is in Trafalgar Square in the heart of London, so if galleries are not your cup of tea, you are only a short distance from other famous landmarks and attractions such as Covent Garden, Leicester Square and Buckingham Palace. **Entrance to both the Galleries is free.**

Adult £38.00
Child £36.00
Also pick up
point (A,B,C)
Pickups start
08.15
Home around
18.30

SATURDAY
22nd MARCH

Stewarts Garden Centre and Lymington

A beautiful, Georgian market town, **Lymington** is situated on the southern edge of the New Forest. The town is world renown as a sailing resort with a range of interesting independent shops including some designer boutiques, as well as the High Street Market on a Saturday. We will also stop at **Stewarts Garden Centre**, Christchurch. One of the largest Garden Centres in the area, it has a wonderful gift shop, coffee shop, aquatics centre and an Edinburgh Woollen Mill shop. You will return through parts of the picturesque New Forest.

Adult £31.00
Child £29.00
Also pick up
points
(J,K,L,M)
Pickups start
08.15
Home around
17.30

THURSDAY
27th MARCH

Ideal Home Show and/or The Design Museum

The Ideal Home Show has long been a favourite for all things home and garden. Famous for its impressive full-size Show Homes and celebrity and expert guest advice, the event continues to amaze visitors. The show offers a variety of carefully organised sections to make browsing and finding inspiration easier. **The Design Museum** is the world's leading museum devoted to contemporary design in every form. An ever-changing space for the public, industry and education to come together and explore new ideas. In 2018, the museum won the European Museum of the Year Award. **FYI: Entrance prices Adults £14.00 - Seniors (over 60) - £12.00 Child: Free**

Adult £38.00
Child £36.00
Also pick up
point (A,B,C)
Pickups start
08.15
Home around
18.30

FRIDAY
28th MARCH

Lacock and Bradford-on-Avon

Lacock is a quintessential English village owned almost in its entirety by the National Trust who maintains its unspoiled appearance. Its picturesque streets and historic cottages, untouched by modern alterations are the reason many TV series have been filmed there in recent years including 'Downton Abbey', 'Pride and Prejudice', 'Cranford', and the films 'Harry Potter and the Half-Blood Prince' and 'Wolfman'. To finish the day off we will visit **Bradford-on-Avon**, the history of the town can be traced back to Roman origins, with its historic buildings, shops, pubs and restaurants it will be a pleasant end to the day.

Adult £35.00
Child £33.00
Also pick up
point (P,S)
Pickups start
08.15
Home around
17.30

FRIDAY
4th APRIL



Photo
Courtesy of
Bournemouth
Pavilion

Chicago The Musical at the Bournemouth Pavillion

Set amidst the razzle-dazzle decadence of the 1920s, **CHICAGO** is the story of Roxie Hart, a housewife and nightclub dancer who murders her on-the-side lover. Desperate to avoid conviction, she hires Chicago's slickest criminal lawyer to transform her malicious crime into a barrage of sensational headlines. Described as 'a razzling-dazzling evening not to be missed' and 'sheer theatrical bliss' secure your seat now! **The cost of your ticket is included in your seat price.**

Adult £76.00
Child £74.00
Also pick up
points
(J,K,L,M)
Pickups start
17.00
Home around
22.30

TUESDAY
8th APRIL

Hillier (Rosebourne) Garden Centre and The Fairground Craft & Design Centre, Andover (Also running on the 4th November)

Hillier Garden Centre (Rosebourne) has built a reputation for quality produce in its vast food hall. It also has a Gift shop alongside its Garden Centre and Nursery. You will be amazed by the size and variety of products it offers and it has an excellent award-winning restaurant. The Fairground Craft Centre consists of 12 individual units which include a Yarn shop, a Patchwork and Quilting outlet, Bookshop, a Florist, a Cafe and a Craft Studio which offers art and craft workshops, where you can learn new skills. Optional two-hour workshop, where you are taught the art of card and gift box making, which you will take home with you. Cost is £15.00

Adult £31.00
Child £29.00
Also pick up points (A,B)
Pickups start 09.00
Home around 16.30

WEDNESDAY
9th APRIL

Clarks Shopping Village and Wells (Also running on the 16th October and 6th November)

Enjoy a fantastic day of shopping at Street, the home of Clarks Village Shopping Outlet, with over 90 Designer and High Street brands. Clarks is renowned for its large selection of famous brand names at up to 60% off recommended retail prices. There are also many places to eat, drink and recharge your batteries. Don't forget the town of Street also has shops and places to eat. **Wells** is the smallest medieval city in England. Famous for its 13th century Cathedral, it remains remarkably unspoilt. The Market Place which has narrow streets and an eclectic mix of building styles also hosts a market on a Wednesday.

Adult £31.00
Child £29.00
Also pick up point (P,Q,R)
Pickups from 08.15
Home around 17.30

THURSDAY
10th APRIL

Hughenden Manor

Hughenden was the country home of Victorian Prime Minister Benjamin Disraeli, and more recently a top-secret map-making facility during the Second World War. However, there's almost a thousand years of history to uncover during your visit. Hughenden houses one of the world's greatest collections of art and historical objects. From great masterpieces to sculptures, there's something for every art lover to discover. You can also explore the vast gardens, parkland and pleasure grounds. **FYI Adults £15.00 National Trust members: Free.**

Adult £38.00
Child £36.00
Pick up points (A,B,C)
Pickups from 08.15
Home around 18.30

SATURDAY
12th APRIL

Houses of Parliament (The Palace of Westminster) Guided Tour

The Palace of Westminster is commonly called the **Houses of Parliament** after the House of Commons and the House of Lords, the two legislative chambers which occupy the building. Venture into the heart of the Palace accompanied by an expert guide for a 90-minute tour and discover the history, heritage and work of UK Parliament. You will also have a few hours to explore other London landmarks close by. Please be advised the UK Parliament is a working building and tours may be cancelled at short notice due to parliamentary business and access restrictions. **The cost of your ticket is included in your seat price.**

Adult £72.00
Child £70.00
Pick up points (A,B,C)
Pickups from 08.15
Home around 18.30

TUESDAY
15th APRIL



Tulips at Arundel Castle or Chichester

Arundel Castle gardens and grounds provide the beautiful setting for one of the largest displays of tulips in the country. 2024 was the Tulip Festivals 10th Anniversary and the garden team have planted 1.2 million spring bulbs during this time. (see the trip on the 19th June for more information about Arundel) Instead, you may be dropped off in **Chichester** which has an array of shops with lots of places to enjoy lunch. The Cathedral and Museum can be found in the heart of the city.

Adult £34.00
Child £32.00
Also pick up points (G,H,I)
Pickups start 08.15
Home around 18.00

THURSDAY
17th APRIL

Dunster Castle and the West Somerset Steam Railway

Dunster, a Norman Castle, with its impressive medieval gatehouse and ruined tower are a reminder of its turbulent history. The castle that you see today became a lavish country home during the 19th century for the Luttrell family, who lived here for 600 years. You will also have the opportunity, if you wish, to visit Minehead with its long sandy beach, historic harbour and bustling high Street. You can also take a nostalgic train ride on the **West Somerset Railway**. This heritage railway maintains 20 miles of track which takes in some stunning countryside and coast line. **Castle Entrance Adult £17.00 Free to NT members**

Adult £38.00
Child £36.00
Also pick up points (P,Q,R)
Pickups start 08.15
Home around 18.00

THURSDAY
24th APRIL

Thursday Market at Kempton Park Racecourse and Richmond-upon-Thames

Kempton Park Thursday Market is the largest weekday market in the South of England. The range of goods on sale is wide ranging and has a reputation for being very competitively priced. After spending a few hours at Kempton Park market, we will then visit **Richmond-upon-Thames** which boasts historic pubs and restaurants, independent shops, historic houses and the enormous Richmond Park. Explore this pretty suburb, enjoy a walk along the Thames or take in the panoramic views of the Thames Valley and London which can be viewed from King Henry's Mound.

Adult £38.00
Child £36.00
Also pick up points (A,B,C)
Pickups start 10.00
Home around 19.30

FRIDAY
25th APRIL

Chelsea Pensioners, Royal Hospital Chelsea, National Army Museum and Chelsea Physic Garden

Three options: **Chelsea Pensioners** are retired British Army veterans who live at the Royal Hospital Chelsea in London. Guided tours with a Chelsea Pensioner are available at a cost of £25.00 per person, bookable online and separate to your seat price. **The National Army Museum** is a leading authority on the British Army and its impact on society (**entrance is FOC**) **Chelsea Physic Garden** is home to over 4,500 medicinal, edible and useful plants. Explore the historic glasshouses and enjoy the four-acres of green space in central London. **Adult £10.00 (free to HH members)** All three attractions are in the same road.

Adult £38.00
Child £36.00
Also pick up points (A,B,C)
Pickups start 08.15
Home around 18.00

TUESDAY
29th APRIL

Highgate Cemetery Tour and Longacres Garden Centre (Also running on the 23rd September)

Our trip today will start at **Longacres Garden Centre**, Bagshot, which is an ideal halfway stop off point to break up the journey. We will then head to **Highgate Cemetery** where you will be taken on a **guided tour** of the West side of the Cemetery, home to the most impressive architectural features of Highgate Cemetery. Guides regale groups with stories of characters buried in the cemetery, explain the history and background and lead them into the atmospheric Terrace Catacombs, which can only be visited on a guided tour. **The guided tour price is included in the seat price.**

Adult £57.00
Child £55.00
Also pick up
point (A,B,C)
Pickups start
08.15
Home around
18.30

WEDNESDAY
30th APRIL

Poole to Wareham Boat Cruise and Wareham

Take a truly relaxing one-way trip from Poole Harbour along the picturesque River Frome to the historic town of Wareham, with its massive earth ramparts built by King Alfred the Great. The boat trip takes approximately 70 minutes. Once ashore the choice is yours: enjoy lunch in one of the towns many welcoming pubs and restaurants or explore the town's 2000 years of history by taking a walk around the ancient walls & visit the only Saxon church in Dorset, with its magnificent effigy of Lawrence of Arabia. You will be collected from Wareham for your return trip back to Salisbury. **Your cruise ticket is included in your seat price.**

Adult £ 43.00
Child £41.00
Also pick up
points (N,O)
Pickups start
08.15
Home around
17.30

SUNDAY
4th MAY



Dionne Warwick: Don't Make Me Over Live performance, Bournemouth Pavilion

Meet the real **Dionne Warwick**, a six-time Grammy Award-winning singer, actress and television host. Hear timeless hits such as "What the World Needs Now", "Say A Little Prayer", and "Don't Make Me Over". Join Dionne while she guides you through her remarkable life story, from her humble beginnings as a gospel singer in New Jersey to superstardom and one of the most recognisable and successful female voices of our time. **Ticket price is included in the seat price.**

Adult £76.00
Child £74.00
Also pick up
point (J,K,L,M)
Pickups start
17.00
Home around
22.30

TUESDAY
6th MAY

Holme Gardens and Wareham, Dorset

Holme Garden Centre has an extensive range of plants, gifts, books and local produce. It also has a great Café set amongst landscaped patios and ponds, selling delicious home-made cakes, at very reasonable prices. On the same site are the beautifully landscaped **Holme Gardens** which offer all year-round colour and inspiration for your enjoyment. **FYI Garden entrance is £8.00 (Free for RHS)** **Wareham** is one of the few remaining Saxon walled towns in England, you can explore the town's 2000 years of history by taking a walk around the Wareham Walls to find out about Viking attacks, civil war skirmishes and gruesome executions!

Adult £32.00
Child £30.00
Also pick up
points (N,O)
Pickups start
08.15
Home around
17.30

WEDNESDAY
7th MAY

Great Bedwyn Canal Boat Trip (Also running on the 3rd July and 4th Sept)

Enjoy a leisurely day navigating the beautiful Kennet and Avon Canal. You will be looked after by a crew of three volunteers from the Avon and Kennet Canal trust and you will be encouraged to have a go at steering and if you wish, help navigating the locks. Should our great English weather let us down, you will be able to sit inside the boat which benefits from central heating, a flushing WC and a fully equipped galley, with tea and coffee making facilities. There will be no stops for lunch, so we strongly recommend a packed lunch or bring food you can prepare in the galley. **The canal boat trip is included in the seat price.**

Adult £62.00
Child £60.00
Also pick up points (A,B,D,E)
Pickups start 08.15
Home around 17.30

THURSDAY
8th MAY

RHS Malvern Spring Festival

RHS Malvern Spring Festival is one of the first major flower shows of the year, set close to the Malvern Hills, which provide the perfect backdrop to a plethora of plants and spectacular blooms. Be inspired by the ground breaking Show Gardens designed by the county's leading horticultural experts, judged by the housewife's favourite gardener, Alan Titchmarsh. Wonder around the Plant Village and Pavilions for inspiration, or choose your next set of garden furniture or garden building. There's something for everyone, no matter what kind of gardener you are. **RHS discount tickets Adult £31.85 - Non RHS tickets Adults £40.85**

Adult £38.00
Child £36.00
Also pick up points (A,B,D,E)
Pickups start 08.15
Home around 18.30

FRIDAY
9th MAY



Photo Courtesy of Bournemouth Pavilion

Madama Butterfly - featuring the Ukrainian Opera & Ballet Theatre Kyiv, Bournemouth Pavilion

This award-winning Opera returns with a new production, with exquisite sets including a spectacular Japanese garden and fabulous costumes, including antique wedding kimonos from Japan. One of the world's most popular operas, Puccini's **Madama Butterfly** tells the heart-breaking story of the beautiful young Japanese girl who falls in love with an American naval lieutenant – with dramatic results. You may need to take your handkerchief with you. **Your ticket is included in your seat price.**

Adult £72.00
Child £70.00
Also pick up points (J,K,L,M)
Pickups start 17.00
Home around 22.30

TUESDAY
13th MAY



RHS Wakehurst

RHS Wakehurst is the sister botanic garden to Kew but in the heart of Sussex. Set in 500 acres of dramatic landscape, you will gaze upon beautiful ornamental gardens, temperate woodlands, striking valleys, vast meadows and wetlands as well as a nature reserve full of diverse wildlife. Walk amongst great swathes of bluebells, which carpet the woodland floors in May. **FYI entrance to Wakehurst: Adults £16.50 / Child: 16 or under: Free / National Trust members: Free.**

Adult £38.00
Child £36.00
Also pick up points (G,H,I)
Pickups start 08.15
Home around 18.00

WEDNESDAY
14th MAY

Bowood House and Gardens and the Woodland Gardens

Set within 100 acres of beautifully landscaped 'Capability' Brown Parkland, **Bowood House** is steeped in rich history and natural beauty. Enjoy meandering through the gardens, strolling through the house or enjoy a picnic or cream tea in one of the cafés. A separate attraction on the Bowood Estate and only open for six weeks during the flowering season, is the **Woodland Garden** which offers breathtaking vistas of colour and beauty. Covering over 30 acres and considered one of the country's most exciting woodland gardens. **Admission is included in your seat price and also includes access into the Walled Garden as part of the 50th Anniversary.**

Adult £50.00
Child £48.00
Also pick up
points (P,S)
Pickups start
08.15
Home around
17.30

THURSDAY
15th MAY



Clevedon Pier with Guided Tour and Fish and Chips

Known as 'the most beautiful Pier in England', you will be guided along this award-winning Grade 1 Listed Pier and Victorian structure with a dedicated volunteer who will be explaining the history, the golden era, the collapse and decay, to its resurrection! You will visit the Glass Box restaurant, with views of the pier and the ocean to enjoy your Fish and Chip meal. No trip to the seaside is complete without them. **Please note the cost of the tour and fish and chips is included in your seat price.**

Adult £63.00
Child £61.00
Also pick up
points (P&S)
Pickups start
08.15
Home around
18.30

FRIDAY
16th MAY

Exbury Gardens or Beaulieu House and National Motor Museum

Visit **Exbury Gardens**, famous for its collection of rhododendrons, azaleas and camellias, and set in 250 acres of spectacular landscaped woodland in the heart of the New Forest National Park. Enjoy a ride on the Steam Railway (additional charge). **FYI Adult entrance £16.00.** Alternatively, you can visit the **National Motor Museum, Beaulieu** which includes the Palace House and Gardens, Beaulieu Abbey and World of Top Gear. Gain fascinating insight into the Montagu Family home since 1538, and don't forget the famous Monorail! **FYI Adults £27.00 (60+) Reduced rates with online tickets in advance.**

Adult £31.00
Child £29.00
Also pick up
points (G,H,I)
Pickups start
08.15
Home around
17.00

WEDNESDAY
21st MAY

Great Days Out Coffee Morning in Aid of Dementia UK, 10:00am – 12:00pm at Salisbury Methodist Church, St Edmunds Church Street, Salisbury.

Please join The Great Days Out team and other like-minded people for a chat over a coffee/tea and cake, in the Methodist Church Hall, Salisbury. Not only will you enjoy refreshments and friendship, you will be contributing towards our fund-raising efforts benefiting Dementia UK. Join others you will have travelled with previously or make new acquaintances and support a great cause. We would appreciate you letting us know if you intend to attend, so we have an idea of how many to cater for, thank you. **Coffee/Tea and Cake £5.00 with the proceeds going to Dementia UK.**

10:00am – 12:00pm
at Salisbury
Methodist Church

In aid of



THURSDAY
22nd MAY



Leonardslee Lakes and Gardens, Sculpture Park and Art Gallery

Often referred to as 'The finest woodland gardens in England' - Leonardslee provides a peaceful and unspoiled environment where nature thrives. The estate is home to an extraordinary range of wildlife and birds and home to over 100 regularly seen, free-roaming deer. In short, Leonardslee Gardens is a treasure trove of art and nature, where you can explore beautiful sculptures and visit the Art Gallery. **Please note the cost of your ticket is included in your seat price.**

Adult £53.00
Child £51.00
Also pick up points (G,H,I)
Pickups start 08.15
Home around 18.30

FRIDAY
23rd MAY

Lulworth Cove and Lulworth Castle

Lulworth Cove is the jewel of the Jurassic Coast line. Take in the wonderful Dorset seascapes and rolling coastline, visit the souvenir shops and maybe have fish and chips or a cream tea by the sea. **Lulworth Castle** stands majestically in extensive parkland at the heart of the Lulworth Estate. All but destroyed by fire in 1929 the Castle exterior has been restored while the interior has been consolidated providing a magnificent open plan space. St Mary's Chapel, in the Castle grounds, is the first stand-alone Roman Catholic place of worship to be built after the Reformation. **Castle Admission: Adult £9.00 EH and HH members FREE**

Adult £31.00
Child £29.00
Also pick up points (N,O)
Pickups start 08.15
Home around 17.00

TUESDAY
27th MAY

Weald and Downland Museum or Chichester

Experience 1,000 years of rural life in one remarkable open-air site. Discover rescued rural buildings set in a beautiful landscape. Explore the 40-acre site and visit more than 50 historic buildings. Enjoy a regular programme of demonstrations, cooking in a Tudor kitchen, blacksmithing in a Victorian blacksmiths and baking in a bakehouse. Take a walk in the woods, visit the waterside cafe or enjoy your own picnic. The museum is also the venue for the popular TV series "The repair Shop" which is set up in one of the historic barns. There is also an alternative option to visit **Chichester** for the day. **FYI Adults: £16.90 / Seniors (60) £15.10**

Adult £34.00
Child £32.00
Also pick up point (G,H,I)
Pickups start 08.15
Home around 17.30

WEDNESDAY
28th MAY

Syon House, Gardens and Great Conservatory or Chiswick House and Gardens (Trip also running on the 8th October)

Syon House is the spectacular London home of the Duke of Northumberland. The house built in the sixteenth century has many layers of history. With many spectacular rooms and a remarkable 600-year garden history to discover. **FYI Adult £15.00 (Over 60's) £13.50** Alternatively you can visit **Chiswick House** which is one of the earliest and most important neo-Palladian villas in England and was the first ever English landscaped garden. In addition to the beautiful house and gardens, you'll find a café and shop to eat and browse. **FYI Adult entrance £11.00 – English Heritage members FREE.**

Adult £38.00
Child £36.00
Also pick up points (A,B,C)
Pickups start 08.15
Home around 18.00

ALL PLASTERING WORK
UNDERTAKEN



Jorden Lowe
07881227546

EMAIL: jloweplastering@outlook.com

FREE QUOTATIONS:

- Dry lining
- Skimming
- Patch and Repair
- Rendering
- K Rend
- Overboarding ceilings

FULLY INSURED



John Jeffery of Salisbury

Established 1902

**Residential and Commercial Agents
Residential Letting and Managing Agents**

**We are an independent, family run
business offering a professional
and friendly approach to all your
property requirements**

**42 Castle Street Salisbury SP1 3TT
Tel : 01722 335337
properties@johnjeffery.co.uk**



B & M
Windows & Doors Ltd

**PVCu window and door repair specialists in the
Salisbury and surrounding area**



*For misted or broken double glazed units,
replacement or adjustment of window and
door locks, handles and hinges*

**Call us for a free quotation on
01722 414655**

DRIVERS REQUIRED

**FULL TIME AND PART TIME
PSV AND PRIVATE HIRE
DRIVERS REQUIRED FOR
DAY TRIPS AND AIRPORT
TRANSFERS.**

**FOR MORE INFORMATION,
PLEASE LOOK AT OUR
ADVERTISEMENT ON
THE BACK PAGE OF THIS
BROCHURE**

**Are you a PSV or Private Hire driver, looking for a new challenge? Please see
the back cover for driving opportunities with Great Days Out.**

THURSDAY
29th MAY

Poundbury and Thomas Hardy Guided Tour, Dorchester

Come and join Mark Chutter, chairman of the Thomas Hardy Society, for this tour starting at the famous Poundbury which was the concept of King Charles (formerly the Duchy). Designed by Leon Krier, Poundbury is based on Lucca in Italy. We will also view the iron-age fort Maiden Castle. We will take a break for lunch, then in the afternoon we will visit Dorchester and consider all of the links in his novel 'The Mayor of Casterbridge'. We will also focus on the literary connections that Hardy had with William Barnes and Sir Frederick Treves. This will end with an afternoon tea at 'The Old Tea House' (optional and not included in the seat price) Cost of the tour included in the seat price.

Adult £45.00
Child £43.00
Also pick up
points (N,O)
Pickups start
08.15
Home around
17.30

FRIDAY
30th MAY

Sudeley Castle and Grounds with Private Guided Tour

Home to Elizabeth, Lady Ashcombe, and the Dent-Brocklehurst family, Sudeley is a Tudor jewel with years of history and formal gardens. Discover 1,000 years of English royalty, romance, ruin and revival with a guided tour. Follow in the footsteps of Kings, Queens, the good, the great and the controversial. Explore ten exquisite award-winning gardens and romantic ruins. Acquaint yourself with the past lives of some of the England's most illustrious figures. You can eat in a choice of cafes, or bring a picnic and eat at one of the many areas in the castle grounds. Cost of the private guided tour is included in the seat price.

Adult £63.00
Child £61.00
Also pick
up points
(A,B,D,E)
Pickups start
08.15
Home around
18.00

TUESDAY
3rd JUNE

Kew Gardens

Kew Gardens are the most famous botanical gardens in the world, set in 500 acres of woodland. They also oversee the world's largest seed conservation project and their collection of living plants is the largest and most diverse to be found anywhere in the world. You will be inspired by the landscapes, be able to wonder through the glasshouses and historic buildings and see a vast range of rare and beautiful plants. You can also visit Kew Palace in the grounds of Kew Gardens which was originally a royal summer house but was turned into the home of Mad King George. **FYI Adults £22.00 Discounted tickets are available on-line.**

Adult £38.00
Child £36.00
Also pick up
point (A,B,C)
Pickups start
08.15
Home around
18.00

WEDNESDAY
4th JUNE

Mottisfont Abbey and Gardens and Stockbridge

Mottisfont Abbey was once a medieval priory, it is full of surprises, with art that intrigues and delights. It is home to the National Collection of Pre-1900 Shrub Roses, which creates an annual spectacle. Unlike modern species, these 'old fashioned' roses tend to flower just once a year, so their blooming season is an extraordinary sight. Climbers are trained onto red-brick walls, and shrub roses are set in beds amongst other flowers. We will also visit **Stockbridge** with its wide picturesque High Street. Here you will find specialist shops, art galleries, and many tea rooms and restaurants. **Abbey entrance: Adult £21 Free to NT members.**

Adult £31.00
Child £29.00
Also pick up
point (F)
Pickups start
08.15
Home around
17.00

THURSDAY
5th JUNE



Hatfield House with Guided Tour

Enjoy a house steeped in over 400 years of history, with picture perfect gardens that offer 40 acres of tranquillity and woodland walks, just a stone's throw from modern day London. Built by Robert Cecil, in the grounds where Queen Elizabeth I spent much of her childhood, the house is home to centuries of historical treasures collected by the Cecil family. You will find a unique retail experience and a cosy restaurant to refuel in the Stable Yard. **House entry and tour included in the seat price.**

Adult £65.00
Child £63.00
Also pick up
points (A,B,C)
Pickups start
08.15
Home around
18.30

FRIDAY
6th JUNE

Jurassic Coast Scenic Tour with Blue Badge Guide

Our interesting and educational day out with a Blue Badge Guide will begin in the charming village of Milton Abbas. The village was built between 1773 & 1780 by order of Lord Milton who instructed landscape designer Capability Brown to create an idyllic village scape. We will then continue on to the Georgian resort of Weymouth and Isle of Portland. After lunch we will take the scenic coast road to Lyme Regis via Abbotsbury Village and Swannery and West Bay, where the TV drama Broadchurch was filmed. Throughout the day your guide will be pointing out places of interest and speaking about the history of this stunning length of coastline.

Adult £55.00
Child £53.00
Also pick up
points
(N,Q)
Pickups start
08.15
Home around
18.00

TUESDAY
10th JUNE

RHS Gardens Wisley

Wisley is the historical home of the RHS and is undoubtedly one of the great gardens of the world, sprawled over 200 acres and with over a million visitors to the garden each year. Visit the stunning Glasshouse (housing over 5,000 different varieties of tropical plants), Battleston Hill, Fruit Orchard, Rock Garden, Mediterranean Garden, Walled Garden, Rose Garden and Wildlife Garden to name but a few. The beauty and tranquillity of the garden captures the imagination, with its richly planted borders, luscious rose gardens and the exotica of the glasshouses. **FYI Adult £18.50 RHS members: Free.**

Adult £38.00
Child £36.00
Also pick up
point (A,B,C)
Pickups start
08.15
Home around
18.00

THURSDAY
12th JUNE

Dorchester or Weymouth

Dorchester has something to satisfy everyone's interest. As well as a great selection of high street regulars, and specialist shops, Dorchester now has the newly constructed Brewery Square Shopping and Leisure Complex, it also has five Museums. You may like to explore Poundbury which is the Prince Charles inspired vision of a 21st century town, with interesting architecture, pedestrianised areas and shops dotted around residential housing. **Weymouth** is on one of the UK's most beautiful coasts, and blessed with one of its sunniest and warmest climates. It offers everything you would expect from an old-fashioned seaside resort and Thursday is also market day in Weymouth.

Adult £32.00
Child £30.00
Also pick up
points (N,O)
Pickups start
08.15
Home around
17.30

SATURDAY
14th JUNE

Sheildhall Steamliner Titanic Themed Cruise

Steamship Shieldhall is the largest working steamship in Britain and is celebrating her 70th anniversary in 2025. She is a member of the National Historic Fleet and serves as a proud reminder of Britain's maritime heritage. Shieldhall allows you to experience the golden age of steam on one of the few Steamships still operating. This trip, which lasts 3.5 hours, will see her steam down Southampton Water with guest speakers and Titanic experts on board pointing out points of interest and speaking about the fate of the Southampton crew after her collision with the iceberg. **The price of the cruise is included in your ticket price.**

Adult £76.00
Child £50.00
Also pick up
points (G,H,I)
Pickups start
13.00
Home around
20.30

WEDNESDAY
18th JUNE

Lyme Regis (Also running on the 19th August)

Lyme Regis boasts breath-taking scenery and a special mystique, making it a sparkling resort for all seasons. Sometimes called the Pearl of the Jurassic Coast, it is set in an area of outstanding natural beauty. Its historic Cobb and harbour are iconic features which featured in the film The French Lieutenant's Woman. With its sandy beach and quaint high street, it is the quintessential English seaside town. Highly recommended for those who would like to hear more about the history of Lyme Regis is a boat trip from the Cobb. You can book online with Lyme Bay Boats or Jurassic Boat trips and cost approximately £15.00. **Please book the midday trip.**

Adult £35.00
Child £33.00
Also pick up
points (N,O)
Pickups start
08.15
Home around
18.00

THURSDAY
19th JUNE

Arundel (Carpet of Flowers) or Chichester

Experience **Arundel** and you will discover more than you'd expect. As well as its famous landmarks, Arundel Castle and Arundel Cathedral, which dominate its impressive skyline, you also have many independent retailers, antique markets and art galleries. Explore the Arundel Museum or sit outside one of the riverside cafes, hire a boat on the boating lake or play crazy golf. On the 19th June there is also the famous **Carpet of Flowers** running the full length of the Cathedral as well as other floral displays around the Cathedral. If you would prefer to spend the day in **Chichester** you can be dropped off on route to Arundel.

Adult £33.00
Child £31.00
Also pick up
points (G,H,I)
Pickups start
08.15
Home around
17.30

SATURDAY
28th JUNE



Blenheim Palace, Park and Gardens including entry to the popular Flower Show.

Blenheim Palace is the seat of the Duke of Marlborough and the only non-royal country house in England to hold the title of Palace. The birth place of Sir Winston Churchill, the Palace is a masterpiece of Baroque architecture, with 90 acres of award-winning Formal Gardens. The Flower Show is the perfect place to discover your favourite plants, flowers and other gardening goodies. **FYI entrance to the Palace, Gardens and Flower Show are included in the price of your ticket.**

Adult £76.00
Child £64.00
Also pick up
points (A,B,C)
Pickups start
08.15
Home around
18.00

WEDNESDAY
2nd JULY

Horse-drawn Canal Boat Cruise and Marlborough

The morning will be spent in the beautiful historic town of **Marlborough**, where you will find big name chain stores nestled amongst quirky side arcades with an extensive choice of highly individual shops. Wednesday is also market day in Marlborough. After your morning in Marlborough, we will take you to Kintbury to board a leisurely 2-hour **Horse-Drawn Canal Boat Cruise**. It runs through what is often spectacular scenery between the Thames at Reading and the Avon at Bristol. Don't miss this opportunity to step back in time on one of England's few remaining horse drawn boats. **Please note the cost of your cruise is included in your seat price.**

Adult £50.00
Child £48.00
Also pick up points (A,B,D,E)
Pickups start 08.15
Home around 17.30

THUR
3rd JUL

Great Bedwyn Canal Boat trip

Please see our trip from Wednesday 7th May for further details. **This same trip is also running again on the 4th September. The canal boat trip is included in the seat price.**

FRIDAY
4th JULY

Boat cruise from Poole to Swanage with Steam Train ride (We are also visiting Swanage by bus on Tuesday 22nd July)

We will arrive at Poole Quay to board the 10.30am Cruise from Poole Harbour to Swanage. This 1-hour cruise with live commentary will pass by some of Dorset's greatest landmarks. Your boat ticket includes the steam train from Swanage to Norden or Corfe, where you could explore the ruins of Corfe Castle or explore the village centre. You will then be collected from Swanage at the end of the day. **FYI Sea Train ticket prices Adults £25.50. If you do not wish to ride the train, a one-way boat trip will be Adults £17.00. Please speak to a member of our staff about booking your boat cruise.**

Adult £32.00
Child £31.00
Also pick up points (N,O)
Pickups start 08.30
Home around 18.00

SATURDAY
5th JULY



Battle Proms Picnic Concert – Blenheim Palace

This quintessentially British 'party in the park' features a 2-hour orchestral programme from the New English Concert Orchestra. Just some of the evenings highlights include the Red Devils Parachute display team, a Spitfire fly past and finale fireworks. So, pack up a picnic and join the party under our gazebos which will be sited at the front of the event with tables and chairs for your comfort. (For more info see our other Prom trip on August 2nd) **Your Prom ticket is included in your seat price.**

Adult £92.00
Child £90.00
Also pick up points (A,B,C)
Pickups start 13.30
Home around midnight

Ever thought of buying a trip as a present, we offer gift vouchers, then the recipient can choose the trip of their choice.
(see page 36 for more information)

WEDNESDAY
9th JULY

Bridport and West Bay

Bridport is a thriving market town especially on Wednesdays when the market is operating. The market consists of a broad selection of traders lining the two main streets - supplemented by lots of independent shops and antique "warehouse" type premises which are full of items to browse as well as a large craft shop. After lunch we will travel to **West Bay**, a charming fishing village on the Jurassic Coastline. West Bay offers some stunning landscape to explore and breath-taking views of its dramatic coastline, and has been made more popular following the drama Broadchurch starring David Tennant and Olivia Coleman.

Adult £33.00
Child £31.00
Also pick up points (N,O)
Pickups start 08.15
Home around 17.30

THURSDAY
10th JULY



Marwell Zoo or Winchester

Marwell Zoo is home to a range of exotic and endangered species such as Amur Tigers, Snow Leopards, Pygmy Hippos, Giraffes, Penguins, Meerkats, Hippo's and Tigers. There are daily talks and shows as well as 140 acres of grounds and gardens accessible by road and rail trains, as well as gift shops, cafes and picnic areas.

FYI Adults: £25.18 / Seniors: £14.39 (60+). Alternatively, you can visit Winchester, for which there is no longer any direct public transport from Salisbury, so why not take this opportunity?

Adult £31.00
Child £29.00
Also pick up points (G,H,I)
Pickups start 08.15
Home around 17.30

FRIDAY
11th JULY



Windsor and Boat Cruise with Cream Tea

A beautiful unique destination, crowned by stunning Windsor Castle, which is the largest and oldest inhabited castle in the world and an official residence of His Majesty the King. You will have time to explore the town of Windsor and Eton, which is a short walk away, before enjoying a **Boat Cruise** which departs from Windsor Promenade. Once on board you will enjoy a delightful Cream Tea as you take in the sights.

Please note the Cruise and cream tea are included in your seat price.

Adult £67.00
Child £65.00
Also pick up points (A,B,C)
Pickups start 08.15
Home around 17.30

TUESDAY
15th JULY

Brighton

Brighton has everything you could wish for from a seaside town. The pier has all the charm of years gone by, you can shop along The Lanes, or take a ride on the Brighton Big Wheel and see for miles around. Close to the pier you will find the Sealife Centre, and just a short walk along the seafront is the British Airways i360 which is a 162-metre observation tower. The Jewel in Brighton's crown is the Royal Pavilion, brimming with decadence and Eastern inspiration, and once the home of Prince Regent. Right next door is Brighton Museum & Art Gallery, and between the two are the Pavilion Gardens, a perfect place to picnic.

Adult £38.00
Child £36.00
Also pick up points (G,H,I)
Pickups start 08.15
Home around 18.00

ANGELA Holidays

UK & Continental
coach holidays,
short breaks,
sea & river cruises

Come and join the Angela family.



We are a fully bonded family operated company based in Bursledon, Southampton who have been serving the south since 1953 offering UK and Continental breaks since 1968.

A reputation for excellence is what has served the company wonderfully well throughout its history from the office staff through to the experienced tour drivers. Our team are determined to not only maintain but to reach even greater heights.

Call us or visit our website to view our current Summer or Winter brochures, alternatively you are welcome to visit us at our office in Bursledon.

**New
Winter
Brochure
OUT
NOW**



**Don't delay book
today, Sit back,
relax and enjoy!**

www.angelaholidays.co.uk T: 023 804 04536

A-Class Roofing & Construction Ltd

Unit 17, Harnham Trading Estate,
Salisbury SP2 8NW

Office: 01722 485910

Direct Line: 07964845340

Email: admin@a-classltd.co.uk

Website: a-classltd.co.uk



A Class Roofing and Construction LTD is an established local roofing and construction business based in Salisbury. Our team have over 100 years of roofing experience between them and are a well-known and respected business, serving Wiltshire, Hampshire and Dorset for the last 15 years.

We are fully licensed and insured and take pride in our work. Safety and professionalism are key to our values. We appreciate how important your home or business is to you and therefore ensure the same care and attention to detail is given to all our valued customers. We treat your property as if it were our own.




your Salisbury-based
roofing experts



Whether you're
looking for
roofing repairs,
replacements or a
brand-new rooftop,
A-Class Roofing
& Construction
has got you
covered



We cover all aspects of roofing and have an extensive knowledge of:

- EPDM Flat Roofing
- Plain tile, Pan tile, Peg Tile
- Natural and Composite slate tiling
- Conservation work, Grade I & II listed
- New Build, site work
- Re-roofing

And also undertake:

- Storm damage / repair work
- Leadwork
- Guttering
- Scaffolding

CONTACT US

17 Harnham Trading Estate, Salisbury SP2 8NW

01722 485910

simon@a-classltd.co.uk

www.a-classltd.co.uk

Our dedicated, hard-working team of 15 roofers and labourers are fully trained in all aspects of roofing. We pride ourselves on our customer service and endeavour to ensure your project is "stress free" from start to finish.

Please feel free to contact us on 01722 485910 for any more information or to arrange a free no obligation quotation.



STONEHENGE SCAFFOLDING LTD.

Stonehenge Scaffolding LTD is a local based Scaffolding company –with over 40 years extensive experience between us in scaffolding. We pride ourselves in providing high quality, safe scaffolding with outstanding customer service. We have a dedicated team who are able to measure up and draw the required scaffolding for your needs.

We are Based in Salisbury, Wiltshire but have recently installed Scaffolding in London (Lillie Street), Ringwood, Bournemouth, New Forest and Swindon area and therefore happy to travel to meet the needs of our clients – providing a free competitive cost.

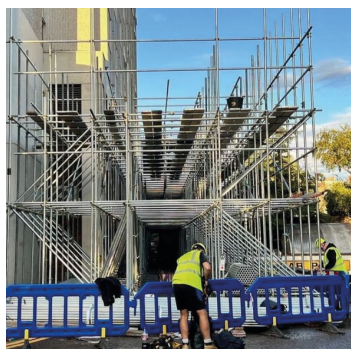
We try to work with our clients to make sure that all safety regulations are in place and that our scaffolding is designed correctly to meet the needs of the works being undertaken. Clients safety, well-being and expectations is our priority.

We can provide references if required and if you wish we can provide addresses of our projects for you to view for yourselves.

Call now on 01722 443855 for a free quotation or to discuss your project further and see how we can help you.

Office: 01722 443855

Email: Stonehenge_scaffolding@outlook.com





New Garage

HARNHAM Ltd

01722 321330

VEHICLE WIDE DIAGNOSTICS

WHATEVER THE PROBLEM,
WE HAVE THE SOLUTION



HIGHLY TRAINED
TECHNICIANS



WELDING



OIL & BRAKE
CHECKS



BREAKDOWN
SERVICE



TYRE REPAIRS



BATTERY CHANGE

RAC

Approved Garage



NEW GARAGE (HARNHAM)

28/30 HARNHAM TRADING ESTATE
SALISBURY
WILTSHIRE
SP2 8NW

WED
16th JUL

Great Days Out Coffee Morning in Aid of Dementia UK.
From 10:00am – 12:00pm Salisbury Methodist Church.
Please see our coffee morning on Wednesday 21st May for further details.



THURSDAY
17th JULY



Bennetts Water Gardens and Weymouth

Set in 8 acres, the gardens hold the National Plant Collection of Water Lilies with a Claude Monet style Japanese Bridge, Tropical House, Woodland Walks and Museum. You may wish to remain there all day whilst others may prefer to visit Weymouth as well, the choice is yours. **FYI Water Gardens Adults £12.00.** Weymouth is on one of the UK's most beautiful coasts and offers the best in an old-fashioned seaside resort with its sandy beaches and seafront amusements.

Adult £32.00
Child £30.00
Also pick up points (N,O)
Pickups start 08.15
Home around 17.30

FRIDAY
18th JULY

Cheddar Caves and Axbridge

Cheddar Caves is one of Britain's most spectacular natural landmarks. The Gorge boasts awe-inspiring cliffs and extraordinary subterranean stalactite show caves. **Axbridge** is a charming market town and its history goes back to King Alfred's time. Pride of place in the square goes to King John's Hunting Lodge which is a National Trust property housing a Museum of local history, and is free to visit for everyone. Despite its name, the building is actually early Tudor with wonderful uneven floors! **FYI If you wish to visit Cheddar Gorge attractions and caves, tickets cost £24.00 for adults and can be purchased online.**

Adult £34.00
Child £32.00
Also pick up point (P,Q,R)
Pickups start 08.15
Home around 17.30

TUESDAY
22nd JULY

Swanage and Holme Gardens

We will start our day at **Holme Gardens** (Please see our trip on Tuesday 6th May for further details). We will then move on to the Victorian seaside town of Swanage. Here you can ride a steam train through the countryside, walk along the Victorian pier or gaze out over Swanage Bay from Durlston Castle. Situated on the Isle of Purbeck, Swanage has changed little over the years and offers the old-fashioned day by the seaside feeling with its seafront arcades and 2p push machines. There are a good selection of shops and great local food can be found in its cafes and welcoming pubs. You can also uncover the story of Swanage at Swanage Museum.

Adult £32.00
Child £30.00
Also pick up points (N,O)
Pickups start 08.15
Home around 17.30

Why not use our trips to visit friends you rarely see that live in, or close to the town we are visiting.

WEDNESDAY
23rd JULY

Sculpture by the Lakes **and Morton**

Sculpture by the Lakes has been carefully landscaped and curated by renowned sculptors Simon and Monique Gudgeon, to ensure each piece is positioned to enhance its aesthetic qualities as well as the visual surroundings. **Moreton** is famous for its association with the prolific writer, T. E. Lawrence, better known as Lawrence of Arabia who died in a motorcycle crash just outside Moreton and is buried in the churchyard. Visit St Nicholas Church, famous for its unusual etched glass windows engraved by the poet and artist Sir Laurence Whistler. There's also a Walled Garden with a café and garden shop. **FYI Entrance fee to the sculpture park is £12.00.**

Adult £31.00
Child £29.00
Also pick up
points (N,O)
Pickups start
08.15
Home around
17.30

THURSDAY
24th JULY

Sandown Park Afternoon Races

Enjoy some great racing at one of the top event venues in the country. Sandown Park is a picturesque site and perfect for an afternoon at the races. We will provide your transport but everything else is up to you. You may want to do it in style, in the Premier enclosure where you can view the horses in the parade ring and access the premier lounge. Alternatively, you can purchase a ticket for the Grandstand. Either way, this is a lovely way to spend a summers afternoon. There are plenty of places to eat and drink and you never know, you may go home richer than when you arrived. **FYI: Premier Enclosure £30.00. Grandstand £22.00**

Adult £38.00
Child £36.00
Also pick up
points (A,B,C)
Pickups start
10.00
Home around
19.30

SUNDAY
27th JULY

Camden Market **or London Zoo** (Also running on the 19th October)

Camden Market is one of the most famous markets in the world. There are hundreds of unique shops, stalls, bars, cafes and food outlets selling every conceivable food from every corner of the world. Alongside the Market is Camden lock where you can take a boat or gondola ride along the canal. Alternatively, you can visit **London Zoo** which is only a short distance from Camden Town. We will drop off those passengers wishing to visit the Zoo before we reach Camden then pick them up at the end of the day. **FYI London Zoo Adults: £33.00 / Seniors (+65): £29.70 (Tickets can be brought online in advance)**

Adult £34.00
Child £32.00
Also pick up
point (P,Q,R)
Pickups start
08.15
Home around
17.30

MONDAY
28th JULY

Brookwood Cemetery **Tour with Guide and Buffet Lunch**

Brookwood Cemetery is the largest cemetery in the United Kingdom and one of the largest in Europe. The cemetery was founded in 1852 to satisfy the demand for burial plots for the ever-increasing population of London. In the morning, we will be taken on a 2-hour guided tour of the South side of the cemetery before stopping for a buffet lunch. In the afternoon we will explore the North side, where there are numerous Military War graves, including the pristine cemetery for American soldiers, who fell in the First World War. Please note there will be some walking involved. **The guided tour and buffet lunch are included in the seat price.**

Adult £55
Child £53
Also pick up
points (A,B,C)
Pickups start
08.15
Home around
18.00

TUESDAY
29th JULY

Athelhampton House and Tolpuddle Martyrs Museum

Athelhampton House is one of England's prettiest, and most important, medieval Tudor manor houses. Step back to 1485 and visit the historic Great Hall, then explore the 16 historic rooms. Wander through 20 acres of formal and architectural gardens with its newly restored kitchen garden. Enjoy a coffee or lunch in the Coach House Restaurant. On our way home we will stop at the **Tolpuddle Martyrs Museum**. Here you will learn about the harrowing story of the Martyrs arrest, trial and punishment and how it led to the foundation of modern-day trade unions. **FYI House and Garden: Adults: £19.50 Online bookings are discounted by 10%.**

Adult £31.00
Child £29.00
Also pick up
points (N,O)
Pickups start
08.15
Home around
17.00

WEDNESDAY
30th JULY



Dorset Queen Afternoon High Tea Cruise ** A truly unique experience**

Dorset Queen is the only vintage motor yacht operating on the South Coast of England. Originally built in 1938, she is believed to have taken part in the Dunkirk evacuations in 1940. As seen on TV, Dorset Queen departs Poole and takes a scenic cruise around the back of Poole's five islands. You will be welcomed aboard with a glass of chilled Prosecco, before being shown to your table to enjoy your High Tea. We will also visit Haskins Garden Centre, Ferndown on route.

Adult £74.00
Child £72.00
Also pick
up points
(J,K,L,M)
Pickups start
08.15
Home around
17.30

SATURDAY
2nd AUGUST



Battle Proms Picnic Concert – Highclere Castle

Battle Proms Concerts are the longest running picnic proms series in the UK. Acclaimed soprano Denise Leigh will captivate you accompanying the classic 'last night of the proms' finale, with Jerusalem, Rule Britannia, Land of Hope and Glory and many more. So, bring some food & fizz and join the party under our gazebo's, for your comfort and shelter. **(For more info see our other Prom trip on July 5th) Your Prom ticket is included in your seat price.**

Adult £85.00
Child £83.00
Also pick up
points (A,B,C)
Pickups start
14.00
Home around
23.30

MONDAY
4th AUGUST



Sidmouth Folk Festival

With its beaches, stunning coastal walks, the beautiful Connaught Gardens, stylish eating places, and some of the best shops in East Devon, you have everything you need for a perfect day out. The Sidmouth 10-day Folk Festival is also on and you will see and hear many bands playing in local pubs and on the streets with additional market stalls along the seafront selling unusual wares which remain for the duration of the festival. You may also wish to visit Sidmouth Museum.

Adult £38.00
Child £36.00
Also pick up
points (N,O)
Pickups start
08.15
Home around
18.30

WEDNESDAY
6th AUGUST

Sidmouth Folk Festival and (optional) Sidmouth Donkey Sanctuary

Please see details about Sidmouth from the trip on Monday 4th August. Today you also have the option to visit the Sidmouth Donkey Sanctuary. The sanctuary is a working farm and home to hundreds of donkeys, mules and hinnies who have been rescued from mistreatment or relinquished into the charity's care. You can also visit the "Understanding Donkeys Zone" to learn everything you need to know about these wonderful animals. The sanctuary has a stunning new restaurant and sells a unique range of donkey-design items in their new Gift Shop. **FYI Entrance to the sanctuary is free.**

Adult £38.00
Child £36.00
Also pick up points (N,O)
Pickups start 08.15
Home around 18.00

TUESDAY
12th AUGUST



Cotswolds Tour

Our tour of the Cotswolds will include a stop in one of the prettiest villages in England, **Bourton-on-the-Water**, with beautiful bridges over the river Windrush, the village is known as "Venice of the Cotswolds." With a wealth of shops, restaurants and tea rooms. We will also visit Bibury, built from honey coloured Cotswold Stone and known for its beauty, its famous Arlington Cottages and its antique shops.

Adult £36.00
Child £34.00
Also pick up points (A,B,D,E)
Pickups start 08.15
Home around 18.30

WEDNESDAY
13th AUGUST

Poppy Factory Tour and Kingston-upon-Thames

Our day will start with a two-hour tour of the **Poppy Factory** in Richmond, where over 12 million poppies and 135,000 remembrance wreaths are made each year for Remembrance Day. You will move through the museum area where you get to make a poppy and see some of the wreaths and poppies that have been made throughout history. We will then visit **Kingston-Upon-Thames**. With 2 large shopping malls, a colourful market place as well as a booming and vibrant independent scene, you will have plenty to do and see. **Entrance to the Poppy Factory is included in the seat price.**

Adult £53.00
Child £51.00
Also pick up points (A,B,C)
Pickups start 08.15
Home around 18.00

THURSDAY
14th AUGUST

Dorchester or Weymouth

The day will start in **Dorchester** which has something to satisfy everyone's interest. As well as a great selection of high street regulars, and specialist shops, Dorchester now has the newly constructed Brewery Square Shopping and Leisure Complex. There are also five Museums and Poundbury, which is the concept inspired town of King Charles and only a short walk from the town centre. **Weymouth** is on one of the UK's most beautiful coasts and offers the best in an old-fashioned seaside resort with sandy beaches and seafront amusements. Thursday is market day in Weymouth so you should have plenty to see and do.

Adult £31.00
Child £29.00
Also pick up points (N,O)
Pickups start 08.15
Home around 17.30

TUE
19th AUG

Lyme Regis

Please see our trip on Friday 18th June for further details.

WEDNESDAY
20th AUGUST

Buckingham Palace

The highlight of a visit to **Buckingham Palace**, the official London residence of His Majesty the King is the State Rooms. The public rooms in the Palace where the King and members of the Royal Family receive and entertain their guests on State visits. There are 19 State Rooms, the most prominent of which are the white Drawing Room, the Throne Room, the Ballroom and Music Room and Royal Garden Parties. Then there is the amazing grand staircase and the picture gallery. You will also walk past the 16 hectares of Royal Gardens, best known as the setting for Royal Garden parties. **The Palace entrance ticket is included in the seat price.**

Adult £72.00
Child £70.00
Also pick up
point
(A,B,C)
Pickups start
08.15
Home around
18.30

THURSDAY
21st AUGUST

Oxford (Also running on the 16th September & 22nd November)

Oxford is best known for its university, which consists of 39 colleges dotted around the city. The colleges range from 50 to 750 years old. Many of which are open to the public, like the Oxford University which includes the Bodleian Libraries which house special collections and which you can opt to take a private tour around. Alternatively, the Weston Library offers free, inspiring exhibitions featuring the libraries' rich collections, a unique gift shop and a lovely café set against the backdrop of the floating book stacks in its atrium, Blackwell Hall. You may wish to dine in one of Oxford's many eateries or even take a punt or gondola down the river.

Adult £34.00
Child £32.00
Also pick up
point (A,B,C)
Pickups start
08.15
Home around
18.00

WEDNESDAY
27th AUGUST

Monkey World or The Tank Museum, Bovington

The 65-acre park is home to the stars of TV's 'Monkey Life' and provides sanctuary for rescued and endangered primates from around the world and includes Europe's official orang-utan crèche! Café's serve good value food or there are numerous picnic areas. **The Tank Museum** brings history to life, with the world's best collection of tanks. The exhibitions tell the story of armoured warfare spanning over 100 years of history with 300 armoured vehicles. This unique collection includes the world's first ever tank, the feared German Tiger and the modern Challenger 2. **FYI Monkey World, Adult: £19.00 – Tank Museum, Adult: £22.48**

Adult £31.00
Child £29.00
Also pick up
point (N,O)
Pickups start
08.15
Home around
17.30

We have tried to cover a wide range of destinations and interests in our brochure. However, our itinerary is not exhaustive. Should you wish to visit somewhere we are not advertising and you have 16 likeminded people we will happily quote for a bespoke day out tailored to your exact requirements.

THURSDAY
28th AUGUST

Wells and Scenic Drive through Cheddar Gorge

Please see our trip on Wednesday 9th April for details of **Wells**. When we return, we will take a scenic route through **Cheddar Gorge**, which is 14 miles long, with 22 bends. You will see sheer, awe -inspiring cliffs, and the mountain goats going about their business.

Adult £33.00
Child £31.00
Also pick up
points (P,Q,R)
Pickups start
08.15
Home around
17.30

FRIDAY
29th AUGUST

Cirencester and Honey Street Mill (Also visiting Cirencester on the 10th October)

Known as the capital of the Cotswolds because it lies at the heart of this beautifully and quintessentially English district, Cirencester is a traditional Cotswold market town. It has many independent shops and seriously good restaurants and cafés. Its market square is dominated by the cathedral-like Parish Church of St. John Baptist. On route we will stop at **Honey Street Mill**, built on the banks of the Kennet and Avon Canal. On the site of the Old Mill is a great café, serving amazing cakes. It also houses the Crop Circle Visitors Centre, where you can read about the history and see amazing pictures of these unexplained circles than appear overnight.

Adult £34
Child £32
Also pick
up points
(A,B,D,E)
Pickups start
08.15
Home around
17.30

SATURDAY
30th AUGUST

Spitalfields Market or The British Museum

Discover independent traders that offer cutting-edge fashion, unique interiors and original artworks, each with a story to tell, at one of London's oldest markets. As you browse the stalls, every Saturday you'll find original clothing, accessories, homewares and ethical goods from up to 88 independent designers. As well as the undercover market, there are many independent shops lining the side streets and an eclectic mix of food stalls from every corner of the world, together with cafes and restaurants alike, making it East London's top spot for food and drinks. Alternatively, you could visit **The British Museum** which is dedicated to human history, art and culture. Its permanent collection of eight million works is among the largest and most comprehensive in existence.

Adult £38.00
Child £36.00
Also pick up
point
(A,B,C)
Pickups start
08.15
Home around
18.30

TUESDAY
2nd SEPTEMBER



Christchurch followed by a Sunset Fish & Chips Cruise around Poole Harbour

Our first stop will be **Christchurch**, with its cobbled streets and historic ruins of the old castle, quayside and interesting High Street. We will then head to Poole Harbour to board the boat for a Fish & Chip supper whilst you enjoy watching the sunset over Poole Harbour. **Please see our T&C's regarding food suppliers** **The cost of your ticket and meal is included in your seat price.**

Adult £54.00
Child £52.00
Also pick
up points
(J,K,L,M)
Pickups start
13.30
Home around
21.30

If a tour is oversubscribed, we will endeavour to offer another date to the same destination to satisfy demand.

WED 3rd SEPT	<p>Christchurch followed by a Sunset Fish & Chips Cruise around Poole Harbour</p> <p>Please see our trip on Tuesday 2nd September for further details.</p>	
THUR 4th SEPT	<p>Great Bedwyn Canal Boat trip</p> <p>Please see our trip on Wednesday 7th May for further details. The canal boat trip is included in the seat price.</p>	
MONDAY 15th SEPTEMBER	<div> <div> <p>SOUNDS OF THE</p> <p>60's</p> <p>LIVE</p> <p>Hosted by BBC Radio 2's TONY BLACKBURN</p> </div> <div> <p>Sound of the 60's Live – Hosted by DJ Tony Blackburn (OBE)</p> <p>Tony Blackburn is the most recognisable voice in British radio history. This year he is heading back out on the road, transforming his BBC Radio 2 Sounds of the 60's staple into a live show which will feature music and stories from one of the most transformative decades. Hear about his days at Radio Caroline and him launching Radio One. Please note the cost of your ticket is included in your seat price.</p> </div> </div>	<p>Adult £70.00 Child £68.00 Also pick up point (J,K,L,M) Pickups start 17.00 Home around 22.30</p>
TUE 16th SEPT	<p>Oxford</p> <p>Please see our trip on Thursday 21st August for further details. (also running on the 22nd November)</p>	
WED 17th SEPT	<p>Great Days Out Coffee Morning in Aid of Dementia UK. From 10:00am – 12:00pm Salisbury Methodist Church.</p> <p>Please see our coffee morning on Wednesday 21st May for further details.</p>	<p>In aid of</p>  <p>DementiaUK Helping families face dementia</p>
THURSDAY 18th SEPTEMBER	<p>Petworth House and Park</p> <p>Inspired by the spectacular Palaces of Europe, Petworth House has amazing grand state rooms designed to display wealth, taste and royal connections. Petworth is also considered one of the best surviving examples of Capability Brown's landscapes which can be seen in the 700 acres of deer park. A short distance from the house is the town of Petworth. It is a treasure trove of independent boutiques, cafes, restaurants and is famous for its antiques and arts establishments with around 37 of them all within a half-mile radius. FYI Entrance: Adults £19.00 National Trust members: Free.</p>	<p>Adult £35.00 Child £33.00 Also pick up point (G,H,I) Pickups start 08.15 Home around 18.00</p>

MONDAY
22nd SEPTEMBER



London Museums (Also running on the 30th October)

Although billed as a trip to **London's Museums** you can in fact do as you wish as long as you meet the bus at the designated time. We will drop off and pick up from outside **The Natural History Museum** which is very close to **The Victoria and Albert Museum** and the **Science Museum**. Whichever museum you choose to visit you will be amazed by thousands of thought-provoking exhibits. The best bit of all, is that all of these wonderful Museums are free to enter.

Adult £38.00
Child £36.00
Also pick up
point
(A,B,C)
Pickups start
08.15
Home around
18.30

TUE
23rd SEPT

Highgate Cemetery Tour and Longacres Garden Centre

Please see our trip on Tuesday 29th April for further details.

WEDNESDAY
24th SEPTEMBER

Goodwood Afternoon Races or Chichester

Goodwood Racecourse is renowned for being the most beautiful racecourse in the world. Ever since those early days, 'Glorious Goodwood' (as the July/August Race week became known) has been a firm fixture of the English summer season. King Edward VII, who attended every year, famously dubbed the festival meeting 'a garden party with racing tacked on'. Today, the Racecourse overlooking the South Downs hosts the first of two Autumn afternoon race meetings.

Entrance to the Gordons Enclosure. £30.00. Alternatively, you can visit Chichester for the day, please see details about Chichester on our Tuesday April 15th trip.

Adult £34.00
Child £32.00
Also pick up
points
(G,H,I)
Pickups start
10.30
Home around
20.00

**Christmas is just around the corner. We would welcome your company at our Great Days Out Christmas Lunch.
For more detail, please refer to page 43**

Don't miss out, book early to avoid disappointment as numbers are limited!

If you are a member of a group or association that wishes to organise their own trip, itinerary and choice of destination, we will be happy to quote.

THURSDAY
25th SEPTEMBER



The 39 Steps – Tivoli Theatre Wimborne
Revive Theatre presents 'The 39 Steps'. Imagine four actors playing over 100 characters in a madcap race through murder, espionage, and outrageous disguises. This hilarious, fast-paced stage adaptation of Alfred Hitchcock's iconic thriller is packed with physical comedy, jaw-dropping quick changes, and edge-of-your-seat excitement. **Please note your ticket is included in the price of your seat.**

Adult £52.00
Child £50.00
Also pick up points (N,O)
Pickups start 17.00
Home around 22.30

TUESDAY
30th SEPTEMBER

Bath Races or Bath

Experience an exciting afternoon of racing at **Bath Racecourse**. With plenty of bars and restaurants and a great view from the grandstand, you will have a great day out. Alternatively, visit **Bath**, an elegant city full of traditional heritage, contemporary culture and green spaces. Bath's compact, visitor-friendly centre is overflowing with places to eat and drink, plus some of the finest independent shops in Britain. Bath has a remarkable collection of museums and galleries and its Bath Stone Georgian architecture is straight from a Jane Austen novel. Visit the iconic Royal Crescent, the Abbey or the Roman Baths.

Adult £34.00
Child £32.00
Also pick up points (P,Q,R)
Pickups start 11.00
Home around 19.30

THUR
2nd OCT

Bletchley Park (Station X)

Please see our trip on Wednesday 19th March for further details.

TUESDAY
7th OCTOBER



Twickenham town and Stadium Tour

Visit some of the most exciting and select areas of the Allianz Stadium, including the Royal Box, Players' Tunnel, and a visit pitch-side before finishing your visit with the World Rugby Museum. The highlight of the trip is a visit to the England Dressing Room where you will learn about the match-day preparations and routines of international rugby players. We will also have time to visit the town of Twickenham, prior to the stadium tour. **Please note the cost of your ticket is included in your seat price.**

Adult £67.00
Child £65.00
Also pick up points (A,B,C)
Pickups start 08.15
Home around 18.00

WED
8th OCT

Syon House, Gardens and Great Conservatory or Chiswick House and Gardens

Please see our trip on Wednesday 28th May for further details.

Don't leave booking your Christmas trips to late as there are only 16 seats, they are very popular and may sell out quickly.

THURSDAY
9th OCTOBER

The History of Salisbury with Guest Speaker John Abbot (ex-Mayor of Salisbury) **at Salisbury Methodist Church.**

Mostly forgotten since it's redevelopment in the 60's, the Old Friary was home to many people who were dispersed across Salisbury as the old buildings were taken down to make way for the current estate. This talk will focus on this forgotten corner of Salisbury. Lovibond's Brewery, Friary Laundry, Vanity Fair Dry Cleaners, Burden Brothers Excelsior Motor Works (manufacturers of the Salisbury Scout Motor Car) were all located in the Friary and provided work for many residents. Refreshments will be available after the talk. (Not included in the entrance price) **The proceeds from which, will be donated to Dementia UK. Please arrive by 18.45 for a 19.00 start.**

Adult £7.00

FRIDAY
10th OCTOBER

Cirencester or Swindon Outlet

Known as the capital of the Cotswolds, **Cirencester** is a traditional Cotswold market town. It has many independent shops and good restaurants and cafés. Its market square is dominated by the cathedral-like Parish Church of St. John Baptist, one of the largest in England. There is a weekly Antiques & Collectors' Market in Cirencester's Corn Hall every Friday, as well as a street market. Alternatively, enjoy a fantastic day of shopping at the **McArthur Glen Designer Outlet** Swindon. Renowned for its large selection of famous brand names at up to 60% off recommended retail prices. A great chance to make a start on your Christmas shopping.

Adult £34.00
Child £32.00
Also pick up
points
(A,B,D)
Pickups start
08.15
Home around
18.00

SATURDAY
11th OCTOBER

Knitting & Stitching show at Alexandra Palace

This is the knitting, stitching and craft show of the year, offering every conceivable thing you will need for your hobbies and past times. Whether you want knitting yarn and accessories, fabric, sewing machines or embroidery threads you'll find all the knitting supplies and craft products you can think of, all under one roof. There are also around 250 stalls offering the leading specialist craft supplies with workshops teaching you to dress make, knit, crochet, sew, quilt and more, to help brush up on skills you already have. You also have an amazing Vista from the Palace grounds, looking over the city of London. **FYI Entrance is: Adults £19.00**

Adult £38.00
Child £36.00
Also pick up
point
(A,B,C)
Pickups start
08.15
Home around
19.30

TUESDAY
14th OCTOBER

Kingston Lacy and Wimborne Minster

Kingston Lacy was built to resemble a Venetian Palace and is surrounded by beautiful gardens, such as the Japanese and Kitchen Garden. Over centuries the Bankes family built, altered, embellished and rebuilt the house. Their wealth came from extensive estates and profitable marriages, including inherited wealth from Caribbean plantations supported by the Atlantic slave trade. **FYI Entrance fees; Adult: £20.00 Child: £10.00 (NT) members: Free**
Wimborne Minster is on the banks of the rivers Stour and Allen and dates back to pre-Roman times. It is an interesting and picturesque place to visit for an afternoon, with plenty to do and see.

Adult £31.00
Child £29.00
Also pick up
point
(N,O)
Pickups start
08.15
Home around
17.00

THURSDAY
16th OCTOBER

Rockbourne Christmas Fair at Salisbury Racecourse and Clarks Shopping Village, Street

(Street also running on the 6th November)

We will first visit **Rockbourne Fair**, which is the longest running and one of the most successful pre-Christmas markets in the South West. With over 100 independent boutiques selling exclusive and artisan goods and held in aid of the Salisbury, Stars appeal. **Clarks Village** - Enjoy a fantastic day of shopping at Street, which is renowned for its large selection of famous brand names at up to 60% off recommended retail prices. There are also many places to eat, drink and recharge your batteries.

Adult £31.00
Child £29.00
Pickups start
08.15
Home around
17.30

FRIDAY
17th OCTOBER

Jane Austen Tour with a Blue Badge Guide

Jane Austen was born 250 years ago. To mark this milestone, along with our **Blue Badge Guide**, we will be visiting places associated with this famous English novelist. Our first stop will be Steventon Church, near Whitchurch, where Jane's father was the rector. Jane was born and lived here until her family moved to Bath. Afterwards, we will drive to Chawton to visit the Jane Austen House Museum (**Entrance to the Museum is included in the seat price**) where she lived the latter part of her life. After a break for lunch, the afternoon will be spent learning more about Jane's life in Winchester, where she was laid to rest. **Please note there will be some walking involved.**

Adult £51.00
Child £49.00
Also pick up
points (F)
Pickups start
08.15
Home around
17.30

SAT
18th OCT

Houses of Parliament (The Palace of Westminster) Guided Tour

Please see details from our trip on Saturday 12th April for further details.

SUN
19th OCT

Camden Market or London Zoo

Please see details from our trip on Sunday 27th July for further details.



GIFT VOUCHERS

Make someone's day with a gift voucher!

A Great Days Out gift voucher makes the perfect gift for family, friends or loved ones. It's the ideal present for any time of the year, for birthdays, anniversaries, Christmas or just to show someone you appreciate them. A voucher can be for any denomination and can be used as part payment towards any of our wide range of day excursions.

WEDNESDAY
22nd OCTOBER

Marlborough and Hungerford

The morning will be spent in the beautiful, historic town of **Marlborough**, where you will find big name chain stores nestled amongst quirky side arcades with an extensive choice of highly individual shops. Wednesday is also market day in Marlborough. In the afternoon we will take the 15-minute journey to **Hungerford** which is surrounded by an area of outstanding natural beauty. Take a stroll down to the canal or around the town, where you will find an array of independent and specialist shops offering antiques, fashion and furnishings, crafts and artisan products. There are also many cafés, restaurants and pubs for a bite to eat.

Adult £31.00
Child £29.00
Also pick up points (A,B,D,E)
Pickups start 08.15
Home around 17.30

THURSDAY
23rd OCTOBER

National History Museum at Tring and Longford Park Farm shop, Café & Nursery

The sister museum to the Natural History Museum in London. The museum at Tring has almost 5000 exhibits and is one of the largest private collections of natural history specimens in the world which were amassed by the 2nd Baron, Walter Rothschild. All set in modern galleries in Rothschilds family mansion originally designed by Sir Christopher Wren in the 1680s. **The museum is free but a donation is appreciated.** On route we will stop at the **Longford Park Farm shop, Café & Nursery** on the Leckford estate, owned by The John Lewis partnership. This well known garden centre and Café is set in lovely surroundings.

Adult £38.00
Child £36.00
Also pick up point (A,B,C)
Pickups start 08.15
Home around 18.30

WEDNESDAY
29th OCTOBER



Autumn Leaves New Forest Tour with Cream Tea at Burley and visit to Lymington

This forest tour will take in the ever-changing autumn colours, a blaze of red, brown and orange hues which will encapsulate the National Park, in all its seasonal glory. We will drive through the majestic redwoods at Ornamental Drive. Then visit the picturesque village of Burley in the heart of the New Forest, for a cream tea and the opportunity to explore this quaint traditional New Forest village. Please see our trip on 22nd March for further details about Lymington. **The Cream Tea is included in the seat price.**

Adult £38.00
Child £36.00
Also pick up points (G,H,I)
Pickups start 08.15
Home around 16.30

THUR
30th OCT

London Museums

Please see details from our trip on Monday 22nd September.

Do you have any doubts about going on a Great Days Out trip?
Please refer to Page 46 to read what other passengers have to say
about our service.

SATURDAY
1st NOVEMBER

Somerset Carnival, Bridgwater (with covered Grandstand seats)
Bridgwater Carnival is the UK's oldest carnival and one of the largest illuminated carnival processions in Europe. With over one hundred giant Carnival Carts passing before your eyes over a 2-mile route, each one pulsating with music and aglow with the lights from thousands of coloured light bulbs. The parade starts at 18.00 but you will have plenty of time before to explore Bridgwater and watch the Street Entertainment. **FYI The price includes a covered Grandstand seat so you will have the very best view and be relaxed and dry. Please note, this trip involves some walking and climbing of steps to your grandstand seat.**

Adult £72.00
 Child £70.00
 Also pick up points (P,Q,R)
 Pickups start 13.00
 Home around 22.00

TUESDAY
4th NOVEMBER



Imperial War Museum or Tate Modern

The **Imperial War Museum** is the world's leading museum of war with six floors, all having stories of the extraordinary experiences of ordinary people forced to live their lives in a world torn apart by conflict. Alternatively, visit the **Tate Modern** which is one of the most iconic art galleries in London, with their permanent collections you will see works of art from artists such as Dalí, Pollock, Warhol and Bourgeois. **These wonderful Museums are Free to enter.**

Adult £38.00
 Child £36.00
 Also pick up point (A,B,C)
 Pickups start 08.15
 Home around 18.30

WEDNESDAY
5th NOVEMBER

Hampton Court Palace and or Kingston-upon-Thames

With over 500 stores, 2 shopping malls, a colourful market place as well as a booming and vibrant independent scene, it's no wonder Kingston is the third biggest shopping destination in London. Alternatively, you can visit Henry VIII's favourite royal residence **Hampton Court** and marvel at the breath-taking grandeur of Henry's State Rooms. Explore the vast Tudor kitchens, stroll through over 60 acres of gardens, lose yourself in the famous maze and appreciate the beauty of one of the greatest Palaces on earth. Audio guides are included in the palace ticket **FYI Palace Adult: £30.00 / seniors: (+65) £24.00**


Adult £38.00
 Child £36.00
 Also pick up points (A,B,C)
 Pickups start 08.15
 Home around 18.00

THURSDAY
6th NOVEMBER

Street and/or Glastonbury

For **Street**, please see our trip on the 9th April for further details. **Glastonbury**, this magical and quirky Somerset town is full of history, myths, the smell of incense and fascinating stories surrounding the legend of King Authur. Situated in the heart of the Somerset levels, in rural South West England, you will find the mystical beacon 'Glastonbury Tor' that dominates the skyline, from which you can see for miles. This iconic and evocative landmark is steeped in history and legends! Glastonbury High Street offers you a unique shopping experience quite unlike any other with unusual gift and craft shops.

Adult £31.00
 Child £29.00
 Also pick up points (P,Q,R)
 Pickups start 08.15
 Home around 17.30

TUE 11th NOV	<p>Hillier Garden Centre and The Fairground Craft & Design Centre, Andover</p> <p>Please see our trip on Tuesday 8th April for further details.</p>	
THURSDAY 13th NOVEMBER	<p>Gunwharf Quays and Historical Dockyards, Portsmouth</p> <p>Gunwharf Quays is the UK's only waterfront outlet shopping destination. Shop at over 90 famous brands or eat in a choice of over 30 restaurants, bars and cafes, whilst watching the boats go by in this stunning marina location. A short walk away is the 170m high Spinnaker tower (Adult £14.40 – Senior £13.40) and Portsmouth's historic waterfront. Here you will find The Mary Rose Museum, HMS Victory, HMS Warrior, HMS M.33, the National Museum of the Royal Navy and museums dedicated to Navy submarines and fire power. With this much to do you will be spoilt for choice. (A range of entrance ticket prices can be found online)</p>	<p>Adult £33.00 Child £31.00 Also pick up point (G,H,I) Pickups start 08.15 Home around 17.30</p>
TUE 18th NOV	<p>The National Gallery and National Portrait Gallery</p> <p>Please see our trip on Wednesday 21st March for further details.</p>	
WED 19th NOV	<p>Great Days Out Coffee Morning in Aid of Dementia UK. From 10:00am – 12:00pm at Salisbury Methodist Church.</p> <p>Please see our coffee morning on Wednesday 21st May for further details.</p>	<p>In aid of</p> 
THURSDAY 20th NOVEMBER	<p>Kew Gardens Christmas Lights (Also running on Tuesday 9th December)</p> <p>See the world-famous gardens in a completely different light. Follow the sparkling trail of over one million twinkling lights, illuminating heritage trees and buildings through the Gardens. Fairy tale meets fantasy in a world of singing trees, larger than life flora, ribbons of light, giant baubles, and a flickering Fire Garden. The Palm House leaps into life with a dazzling show of laser beams, jets of light and kaleidoscopic projections. See the UK's tallest living Christmas tree adorned with 1,800 white lights. This is a great way to get into the Christmas spirit. Admission to the gardens is included in the price.</p>	<p>Adult £68.00 Child £66.00 Also pick up points (A,B,C) Pickups start 14.00 Home around 22.30</p>

Advertising is beneficial to businesses. Why not advertise your services and appear in our 2026 brochure for a full year? Please refer to Page 43 for further details.

FRIDAY
21st NOVEMBER

Ham House and/or Richmond Christmas Shopping

A rare and atmospheric 17th-century house sitting on the banks of the River Thames in Richmond. **Ham House** is internationally recognised for its superb collection of paintings, furniture and textiles, largely brought together 400 years ago. Set in one of the first examples of an Orangery, the historic Orangery café serves light lunches and teas. Shopping in **Richmond** is a fun and exciting experience. It is home to many quirky, independent businesses peppered amongst major High Street stores. There are also fabulous eateries and cafes along the banks of the river Thames. **House & Gardens Entrance: Adult £17.00 NT members FREE.**

Adult £38.00
Child £36.00
Also pick up points (A,B,C)
Pickups start 08.15
Home around 18.30

SATURDAY
22nd NOVEMBER

Bicester Shopping Village or Oxford

Discover a relaxed shopping haven in the beautiful Oxfordshire countryside. Shopping is pure pleasure at **Bicester Village**, where sophisticated boutiques, spacious boulevards, attentive service and a friendly, unhurried atmosphere combine to offer a truly unique retail experience. There's so much to enjoy here, whether it's browsing prestigious boutiques at leisure for great-value buys, or sampling fine food and drink in the Village's cafés and restaurants. Enjoy exceptional savings of up to 60% on the RRP at more than 130 top-name boutiques. Please see our trip to **Oxford** on Thursday 21st August for further details.

Adult £34.00
Child £32.00
Also pick up point (A,B,C)
Pickups start 08.30
Home around 18.30

TUESDAY
25th NOVEMBER

RHS Glow Wisley

It's the brightest night of the year packed with sparkling features! Create magical memories at RHS Wisley's festive illuminations in Surrey. See the garden transformed with a wonderful new illuminated trail, with spectacular new views and playful enchanting features. As you wander, enjoy festive tunes filling the air, illuminated trees with colour-changing roots, fairy light Christmas trees and a field of flames to light up your night. You can stop at various points along the way for festive food or a hot drink before heading over to the Jellicoe Canal for the spectacular grand finale! **Please note your ticket is included in your seat price.**

Adult £60.00
Child £58.00
Also pick up point (A,B,C)
Pickups start 14.00
Home around 22.00

THURSDAY
27th NOVEMBER



Waddesdon Manor Christmas Lights

Waddesdon Manor is an exquisite example of a French Chateau housing a famous collection of eighteenth-century decorative arts. This Christmas at Waddesdon, marvel at its tastefully decorated period rooms and dazzling light displays outside when the Manor façades is transformed into projected various stories of Christmas. Browse over 80 hand-selected stalls in their Christmas market set outside the Manor. When darkness falls, follow one of the highlights of the evening, where you follow the spectacular Christmas trail through the woods.

Adult £73.00
Child £71.00
Also pick up point (A,B,C)
Pickups start 11.00
Home around 20.30

FRIDAY
28th NOVEMBER

Gloucester Quays Victorian Christmas Market (Also running on Thursday 4th December)

The market set against the splendid back drop of the City's historic docks, features over 100 stalls selling handmade gifts and the best food and drink the region has to offer. Wooden toys, artisan jewellery, homeware, fine clothes and accessories are all here in abundance. Browse, buy or enjoy a mulled wine and soak up the traditional festive atmosphere and listen to live music including brass bands, choirs and buskers. Gloucester Quays is also an outlet centre where keen shoppers can save up to 70% off well-known brand names. Close by is Gloucester Cathedral so there is plenty to do and see.

Adult £38.00
Child £36.00
Also pick up points (A,B,D,E)
Pickups start 08.30
Home around 18.30

SATURDAY
29th NOVEMBER



Photo by
Johan Persson

ABBA Voyage, ABBA Arena, London

Blending cutting-edge technology, spectacular lighting, and some of the most beloved songs ever written, ABBA take to the stage in a whole new way. In a stunning purpose-built arena, one of the most popular groups in history appear as digital avatars in a ground-breaking concert that really needs to be seen to be believed. **Please note ticket price is included and allocation is as follows: 12 x seated and 12 x dance floor** *Please refer to our website for further information relating to this trip*

Adult £115.00
Child £113.00
Also pick up points (A,B,C)
Pickups start 15.30
Home around 00.30

SUNDAY
30th NOVEMBER



Photo
Courtesy of
Bournemouth
Pavilion

Riverdance 30: The New Generation at the BIC

To celebrate this incredible 30th year milestone, **Riverdance** will embark on a special anniversary tour in 2025, bringing its magic to audiences around the world. This spectacular production rejuvenates the much-loved original show, and for the first time Riverdance welcomes 'The New Generation' of performers, all of whom were not born when the show began 30 years ago. Book your tickets now, they will sell fast! **Please note the cost of your ticket is included in your seat price.**

Adult £76.00
Child £74.00
Also pick up points (J,K,L,M)
Pickups start 17.00
Home around 22.30

THUR
4th DEC

Gloucester Quays Victorian Christmas Market

Please see our trip on Friday 28th November for further details.

If you wish to receive our 2026 brochure please call:
01722 66 55 44

FRIDAY
5th DECEMBER



Winchester Christmas Market

Winchester Christmas Market is recognised as one of the best in Europe, renowned for its unique location, high quality exhibitors and bustling atmosphere. You also have the shops, cafes and restaurants to explore along the medieval streets of Winchester. **FYI There is no longer a direct bus service from Salisbury to Winchester. So, take this opportunity to visit this historical city with our door-to-door service.**

Adult £31.00
Child £29.00
Also pick up
point
(F)
Pickups start
08.15
Home around
17.00

SATURDAY
6th DECEMBER

Battersea Power Station Christmas Shopping or Kings Road

Discover London's new, exciting shopping and leisure destination, the iconic Grade II listed **Battersea Power Station**, which has been brought back to life. Now a place for locals, tourists and residents to enjoy a unique blend of over 150 shops, bars, restaurants and at Christmas, an ice rink. It has however, retained many of its architectural and historical features. Close by is **The King's Road**, the iconic street stretching through Chelsea and Fulham. Associated with 1960s style and with fashion figures such as Mary Quant and Vivienne Westwood. With numerous cafes and restaurants, you will be spoilt for choice!

Adult £38.00
Child £38.00
Also pick up
points
(A,B,C)
Pickups start
08.30
Home around
19.00

TUE
9th DEC

Kew Gardens, Christmas Lights

Please see our trip on Thursday 20th November for further details. **Admission to the gardens is included in the price.**

WEDNESDAY
10th DECEMBER



Longleat Safari, House & Christmas Lights

Our day will start with a drive through the Safari Park. You will then have time to take a look at the other attractions on offer. In the afternoon you will be escorted on a guided tour of Longleat House. As night falls walk amongst the spectacular lanterns that light up Longleat, along with a spectacular light show which takes place in the main square around a 50ft Christmas tree lit up by an interactive light display. **FYI House tour, Safari Park and lights are included in the price.**

Adult £82.00
Child £80.00
Also pick up
points (P,Q,R)
Pickups start
10.30
Home around
20.00

THURSDAY
14th DECEMBER

Bath Christmas Market

The festive season means the picturesque cobbled streets of Bath will be transformed into a magical, festive experience like no other. Featuring 200 twinkling chalets entwining some of Bath's most iconic monuments, including many food and beverage stalls and a light display that will really get you into the Christmas spirit, it's definitely one to add to the to-do list this Christmas. With stalls showcasing artisan jewellers, cheesemongers, homeware and more, it's the perfect place to find some Christmas gifts. You may also wish to go on the Festive Tower Tour at Bath Abbey which can be booked on-line.

Adult £33.00
Child £31.00
Also pick up
points (P,Q,R)
Pickups start
08.15
Home around
17.30

Great Days Out Christmas Lunch at The Red Lion Hotel, Salisbury

To round off what we hope will be a successful year of enjoyable trips, we have the last opportunity to meet up with friends and fellow travellers over a 3 course Christmas lunch. Pull a cracker and get into the Christmas spirit with live entertainment and a complimentary glass of bubbly at The Red Lion Hotel, Milford Street, Salisbury, which is purportedly the oldest purpose-built hotel in Europe. We hope as many customers as possible will attend, so we, at Great Days Out, can thank you personally, for your patronage and join you in celebrating this special time of the year. To begin the afternoon's entertainment, we will be accompanied by a pianist and then a solo singer will round the afternoon off with some seasonal and festive songs. We will also be holding a raffle, with the proceeds going to Dementia UK. Please come along and make our first event of this kind, a success. Don't miss out, book early to avoid disappointment as numbers are limited!

Adult £55.00



Would you like to advertise in next year's brochure and reach 15,000 Salisbury residents?

Your advertisement will be seen over and over again for 12 months of the year as the brochure is printed in January and the last trips are in December. The cost is a fraction of what you would pay to advertise for that length of time in weekly or monthly magazines, free local papers, radio advertising or social media. You will not be advertising alongside your competitors as only one business of its kind will be advertising in the brochure. We do not distribute these randomly through post boxes, they are sent to existing customers with the remainder picked up from places with busy footfall within a 10-mile radius of Salisbury.

What are the benefits to you?

Full colour advertisement in a brochure that is valid for 12 months.

You will be the only trade / business of your kind in the directory.

950 brochures posted to existing customers on our database.

15,000 brochures will be printed and distributed this year.

Brochure stands will be sited in over 140 sites in and around Salisbury.

A targeted audience of mostly home owners within a 10-mile radius of Salisbury.

If you would like to explore this opportunity further and discuss your advertisement content, please contact Dave on **01722 66 55 44** or email **salisburyminibuses@gmail.com**

FOR YOUR COMFORT

We operate a strict no smoking policy in all our vehicles. The use of electronic cigarettes is NOT permitted. In consideration of your fellow passenger we ask that the use of mobile phones is restricted for emergencies only.

No pets (except guide dogs) are permitted to travel on the bus.

Where passengers consume food (fast food e.g. fish and chips and take away food not permitted) or drink on board (alcohol not permitted) we ask you to ensure that other passengers are not inconvenienced, protection is provided against spillage and litter is cleaned up afterwards.

WHEELCHAIRS AND ROLLATORS

We are able to accept light weight wheelchairs and rollators subject to them being able to be folded and stowed in the vehicles luggage compartment and that they weigh no more than 20kg. Please advise the office at the time of booking, as there is a limited amount of space for luggage. Arrowline Minibuses Ltd will not accept liability for any damage to personal property whilst stowed or stored in the vehicle.

CANCELATIONS, REFUNDS OR AMMENDMENTS

BY THE COMPANY

Should the Company be forced to cancel an excursion due to insufficient bookings, all monies paid by passengers for that particular excursion will be refunded in full. There after the company shall be exempt from any further liability. Alternatively, you can transfer your monies to another trip or leave it in credit to use for a forthcoming trip. PLEASE NOTE THAT EXCURSIONS WILL NOT GO AHEAD WITH LESS THAN 10 PASSENGERS DUE TO THE COSTS INVOLVED IN OPERATING THE SERVICE.

BY THE PASSENGER

A. Should you wish to cancel 28 days prior to the date of travel you will receive a full refund of the COACH FARE ONLY. Admissions, meals and guides fees etc, are not refundable as these are prepaid by the company in advance. You may nominate a substitute but any change to the pickup arrangements must be agreed by the Company.

B. Should you wish to cancel between 21-27 days prior to the date of travel a 50% refund of the COACH FARE ONLY will be issued. Admissions, meals and guides fees etc, are not refundable as these are prepaid by the company in advance.

C. Should you wish to cancel between 14-21 days prior to the date of travel a 25% refund of the COACH FARE ONLY will be issued. Admissions, meals and guides fees etc, are not refundable as these are prepaid by the company in advance.

D. For cancelations notified to the Company within 14 days of the date of travel, no refund will be issued. Admissions, meals and guides fees etc, are not refundable as these are prepaid by the company in advance.

GENERAL TERMS AND CONDITIONS

1. Seat Belts

It is a legal requirement that seatbelts must be worn at all times when travelling. If you are unable to fit our seatbelts we will supply a seatbelt extension. Should this not suffice, sorry you cannot travel.

2. Third party suppliers

Where a refreshment stop is taken, no responsibility can be taken for the standard or quality or service of catering establishments. Complaints should be taken up directly with the supplier. We strongly recommend you bring along a snack. We cannot take responsibility for availability or standards of conveniences at stops.

3. Cancelled Trips

No responsibility can be accepted for any cancellation of any advertised trip for reasons outside our control including insufficient passengers, weather conditions and fuel shortages.

4. Behaviour

We will terminate a passenger's journey in the event of unsociable/unreasonable behaviour that impacts on the enjoyment of fellow passengers.

5. Errors or Omissions

Although every effort has been made to ensure the accuracy of the information in our brochure is correct at the time of printing, we cannot accept responsibility for any errors made or omissions. The company cannot be held responsible for any entrance prices quoted for your information FYI being incorrect. We research these details via the websites of the destinations we visit at the time the brochure goes to print but these prices may change by the time the trip takes place. We also ensure that on the days we visit towns and cities, there are no known events taking place that will detract from the enjoyment of your day i.e. marathons, parades or carnivals that require road closures or traffic control. However, the relevant tourist information centres are not aware of all the forthcoming years events in January when we print our brochure.

6. Complaints

Complaints should be made in writing within 7 days of the excursion to our company office at 13a Windsor Road, Salisbury, Wiltshire, SP2 7DX. The company will reply within 14 days.

7. Vehicle to be provided

Arrowline Minibuses Ltd reserves the right to substitute another vehicle (including those of another operator) or ancillary facilities for all or part of the excursion subject to such substitutes being of at least equivalent quality.

8. Breakdowns, Delays & Weather Conditions

Arrowline Minibuses issues approximate pick up / drop off and journey times in good faith. However, as a result of a breakdown or traffic congestion, or any other events beyond the reasonable control of the company, journeys may take longer than predicted and in those circumstances the company will not be liable for any loss or inconvenience suffered by passengers as a result. The approximate return time stated is a guide time under normal conditions and we cannot be held responsible if we have to deviate from this time.

The company will operate in all reasonable and safe weather conditions. However, in the event of serious weather conditions, for example heavy snowfall, no refunds can be given for cancellations. In these circumstances, each claim will be assessed on an individual basis.

TESTIMONIALS

"Hello Dave,

Thank you so much for the eight Great Days Out trips I have enjoyed so far this year. I am looking forward to the next six trips already booked to the end of the year.

I can wholeheartedly recommend your trips to everyone. Each one I have been on so far has been most enjoyable. What I like is that you take us on an adventure along the way, driving down country lanes past little towns and villages I would not normally get to see. Once at the destination we are given more than enough time to explore, shop and have lunch. There is a lovely friendly atmosphere on the bus and it's great getting to see the regular trip adventurers like myself. The weather has been unpredictable at times but it hasn't stopped us from enjoying ourselves."

Dawn Powell

"I want to say a most grateful thank you to you all - especially David, for all the most enjoyable trips I have experienced using Great Days Out this past 12 months. I have been most inspired with the courtesy, reliability, and total enjoyment using Arrowline Minibuses - not to mention the thorough consideration of all those using each venture.

You are all to be commended! And I actually look forward to 2025 and many more ventures courtesy of Great Days Out!"

Barbara Milburn

"Thank you for all the wonderful trips over the last few years. Each year a vast choice of places - something to suit everyone. Always well planned so everything runs smoothly on the day, with helpful, friendly and cheerful drivers. Enjoyed and appreciated by all participants."

Doreen Hill

"What a lovely day we had on our first trip with Great Days Out, we went to Bletchley Park on October 5th, what an interesting place to visit, it's been on my list for a long time.

I can say it was a perfect day picked up & dropped off on time, even the weather was perfect.

David our driver was so nice & very professional and the minibus was very comfortable.

We look forward to our next trip with you."

Ann Burke

"Just to say thank you for a great day to Hampton Court yesterday, thanks to Dave it was a stress-free experience. Both Rob & I thoroughly enjoyed ourselves."

Sue Stickland

"Good morning Dave,

We as a family very much enjoyed our trip and have already spread the word to others.

I am so glad to know that such a highly professional service is available locally, which is a bonus to us.

Your commitment to putting customers first, raises the company's image. Your service is excellent and I'll be using it again in the future."

Mrs Singh



**The Fox and Goose Blandford Road Coombe Bissett
Salisbury SP5 4LE Tel: 01722 718437
Email: foxandgoosecoombebissett@gmail.com
www: foxandgoose-coombebissett.co.uk**



Trip Advisor Certificate of Excellence winner

**A warm and friendly atmosphere where all are welcome,
even well behaved dogs get spoilt.**

Open All day

Food served from 12 noon until 9pm
Homemade Specials and Traditional Sunday Roasts
Log Fire in Winter
Large Beer Garden and Play Area in Summer

Open Music Nights on the third Thursday of each month
all welcome to come and play

FULL-TIME AND PART-TIME PSV DRIVERS REQUIRED

Great Days Out are currently seeking both full-time and part-time drivers to join our busy Day Trips program. If you enjoy driving and meeting new people, this could be the perfect job for you!

Requirements:

- Clean PSV licence
- Comprehensive knowledge of Salisbury and the surrounding area
- Good knowledge of London and the South of England
- Over 25 years old
- Punctual and detail oriented
- Smart and presentable appearance
- Customer-focused with good communication skills

PART-TIME TAXI/PRIVATE HIRE DRIVER REQUIRED

Arrowline Minibuses is seeking a part-time driver to assist with Airport Transfers and Day Trips. (Please note: no rank work involved.) Would suit a semi-retired person.

Requirements:

- Clean Wiltshire County Council Private Hire licence
- Comprehensive knowledge of Salisbury and the surrounding area
- Experience with Airport Transfers
- Punctual and detail oriented
- Smart and presentable appearance
- Customer-focused with good communication skills

If you meet the above criteria and are looking for a rewarding role, we would love to hear from you. Please email David Lowe with your CV and covering letter to
salisburyminibuses@gmail.com