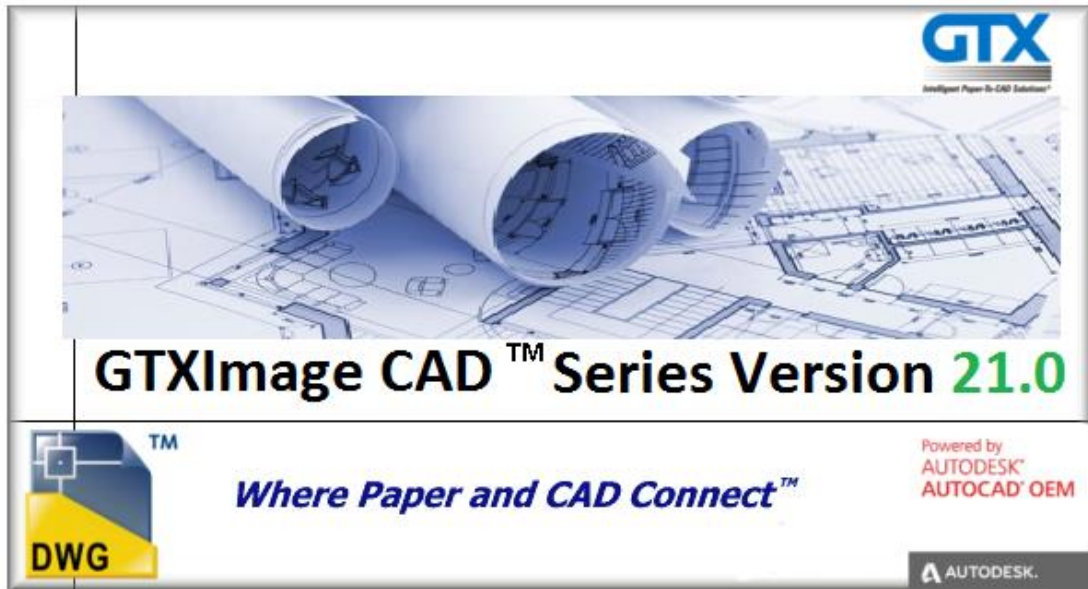


GTXImage CAD™ Series V21.0



Installation Guide

Version 21.0



Table of Contents

| | |
|---|------|
| Table of Contents | Pg 2 |
| Introduction | Pg 3 |
| - DVD Contents | |
| Product Overview | Pg 3 |
| Installing GTXImage CAD or PLUS – Evaluation Copy | Pg 4 |
| Uninstalling GTXImage CAD | Pg 7 |

GTXImage CAD™ Series V21.0
Demonstration DVD
Installation Guide

Introduction

Thank you for your interest in the GTXImage CAD Series! This version is the latest Standalone 2D CAD software technology application from GTX Corporation, which enables you to cleanup, manipulate raster and convert to vector entities, on all of your scanned paper drawings.

This guide has been produced to help you get the most out of your Demo DVD as quickly as possible. This guide is not intended to be a full training manual, it is intended to give the basic commands to allow you to install and run the GTXImage CAD Series product.

Please note that the Demo DVD includes other GTX products, such as GTXRaster CAD® (which runs inside AutoCAD). However, **this guide concentrates only on the GTXImage CAD Series products.**

Product Overview

The GTXImage CAD Series consists of two software products - GTXImage **CAD** & GTXImage CAD **PLUS**:

GTXImage CAD loads raster images and allows image clean-up, restoration & comprehensive editing.

GTXImage CAD PLUS provides the same functionality as GTXImage CAD, with the added capability to convert binary raster into AutoCAD vector entities & text.

Product Functionality.

| | | Product Functionality | | | | |
|--------------------------|----------------|-----------------------|--------------|----------------|---------------------|------------------|
| Product Level | Raster Cleanup | Raster Editing | CAD Drafting | R2V Conversion | ICR Text Conversion | Batch Conversion |
| GTXImage CAD | X | X | X | | | |
| GTXImage CAD PLUS | X | X | X | X | X | X |

This demonstration DVD allows you to install an **Evaluation Copy** of **GTXImage CAD Series** products. This option allows you to experience the real capabilities of loading and working with scanned raster image files, including raster editing and raster conversion capabilities within GTX. It requires **no** additional software (such as AutoCAD) to run. The evaluation software allows you to use all the functionality except you cannot Save and Plot modified files. To evaluate the product to its full we suggest that you Install GTXImage CAD **PLUS** level product.

Also available on this DVD is a technical “White Paper” **How to Integrate Paper with CAD**, which discusses in detail the reasons, issues and technology used to integrate paper based drawings into a CAD environment. If your company is addressing these issues for the first time we strongly recommend that you read this first. It is on the DVD in the INFO\MISC Directory called **WhitePaper.Doc** or **WhitePaper.PDF**

Product Data Sheet providing full specifications on GTXImage CAD Series is available in both Windows Help and Microsoft Write formats. These are to be found in the INFO\CADV210 Directory on the DVD.

GTXImage CAD Evaluation Software - Installation

System Requirements

To install the GTXImage CAD evaluation software you will require the following minimum configuration:

| | |
|-------------|--|
| CPU | Pentium 4 or AMD Athlon equivalent processor 1.6 GHz or higher with SSE2 technology |
| Hard Drive | 2 GB free hard disk space for installation |
| Memory | 2 Gb RAM (8Gb Recommended) |
| Display | 1024 X 768 or better |
| Environment | Windows 10 (32 & 64 Bit), Windows 8/8.1 (32 & 64 Bit) & Windows 7 (32 & 64 Bit) |
| Display | 1024 X 768 VGA with True Color |

Installing the Software

***Important Note: Windows 10™, Windows 8/8.1™ and Windows 7™ users must be logged in as “Administrator” in order to install GTXImage CAD Series. In addition, users should NOT install GTX software under the "Program Files" directory; instead we recommend that the Administrator install the GTX software in the local directory or your department's dedicated directory for 3rd party applications.**

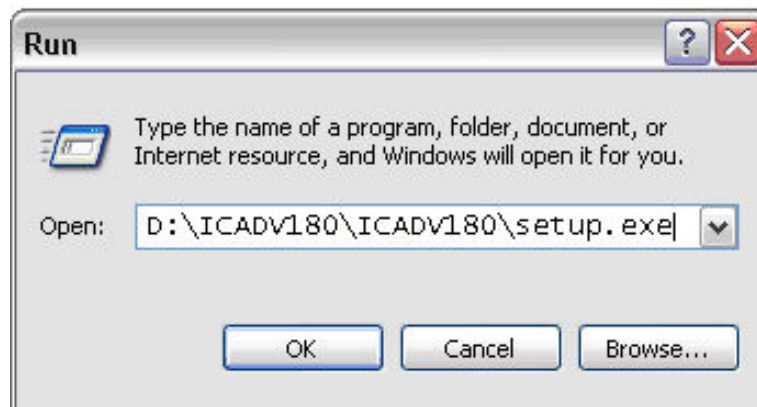
1. Insert the **GTX Demonstration DVD-ROM** in your PC DVD-ROM drive.

AutoRUN

2. If you have AutoRUN active on your system, a splash screen will appear with a number of option buttons. Select **GTXImage CAD Series V21.0** option and click next. Please review the EULA and accept it to continue the installation. Please go to the section **Running the install** on Page 5.

Non AutoRUN

3. If AutoRUN is **not** active, the splash screen will not appear after inserting the DVD into your DVD-ROM drive. Instead select **Start/Run**.
4. With the Browse button select **Setup.exe** from the **ICADV21.0** Directory on the root of the DVD drive.



5. When the file is displayed, Select **OK**.
6. Setup will initialise and after a few seconds the opening dialog will appear.

Running the Install

This will start up the install wizard; it will start to prepare files to load the GTXImage CAD series programs.

Select **Next** in the install wizard to continue installing GTXImage CAD Series



You will be asked if you wish to accept the **GTX software license agreement**, if you agree select **I Accept** then **Next**.

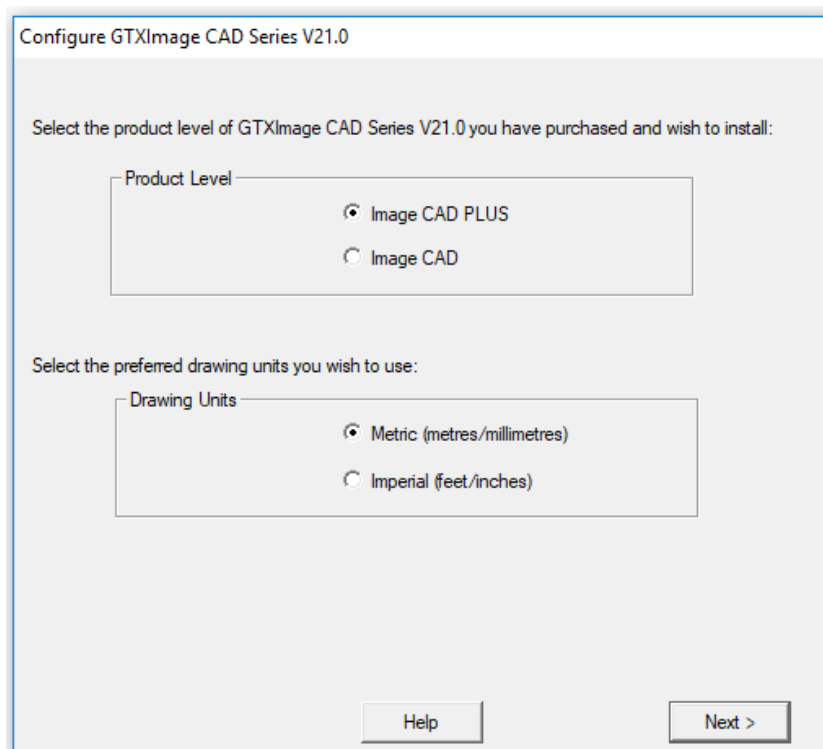


You will now be asked to Configure the Destination Folder for the application or to accept the default, select **Install**.



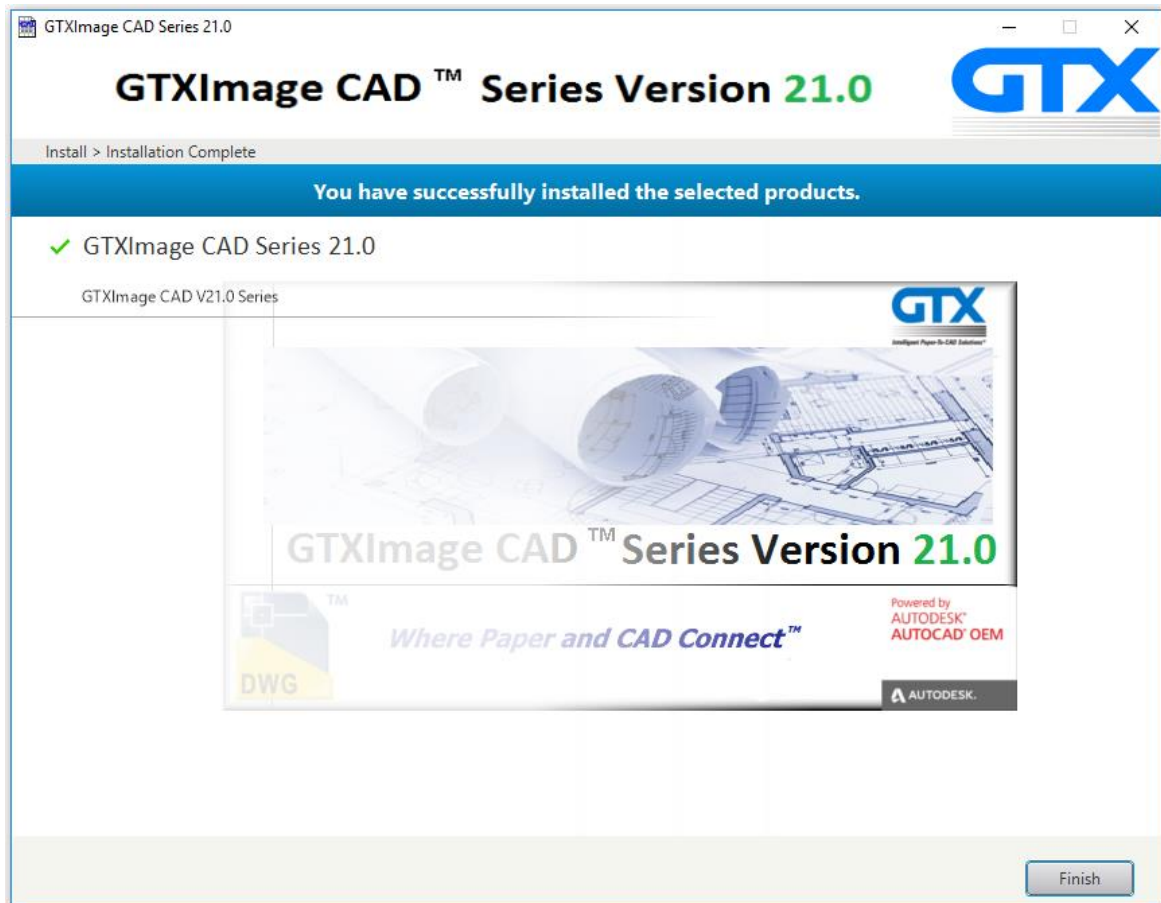
You will be asked to select your chosen product level – GTXImage CAD or GTXImage CAD **PLUS**. To view the full capability of the Series select **GTXImage CAD PLUS**.

You will be asked to Install for metric or imperial Raster units, Select **appropriate measurement system** then **Next**.



SETUP will install the program files to your PC - It may take a few minutes.

When complete select **Finish**. A licencing dialog will be displayed & the installation is now complete.



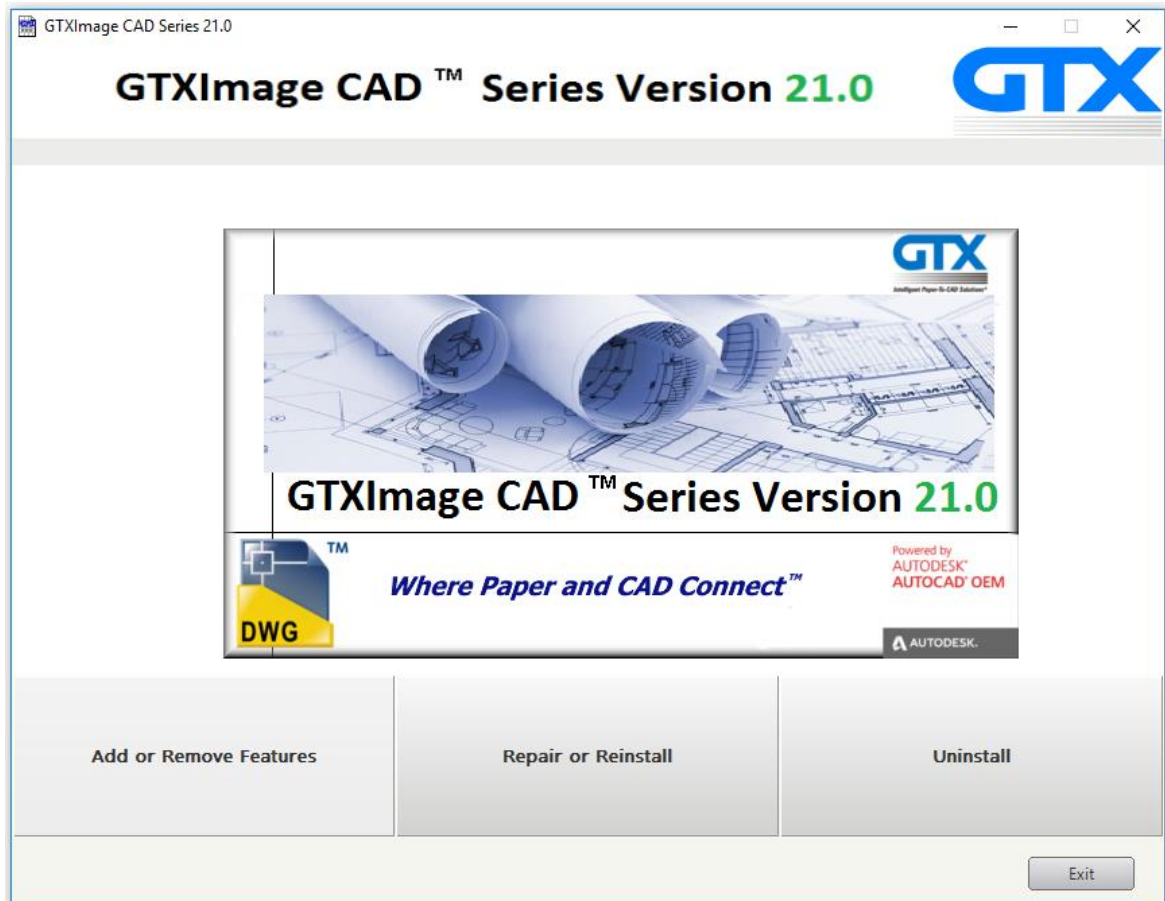
To run GTXImage CAD simply double click on the **GTXImage CAD Series V21.0 Icon**.



Uninstalling the Software

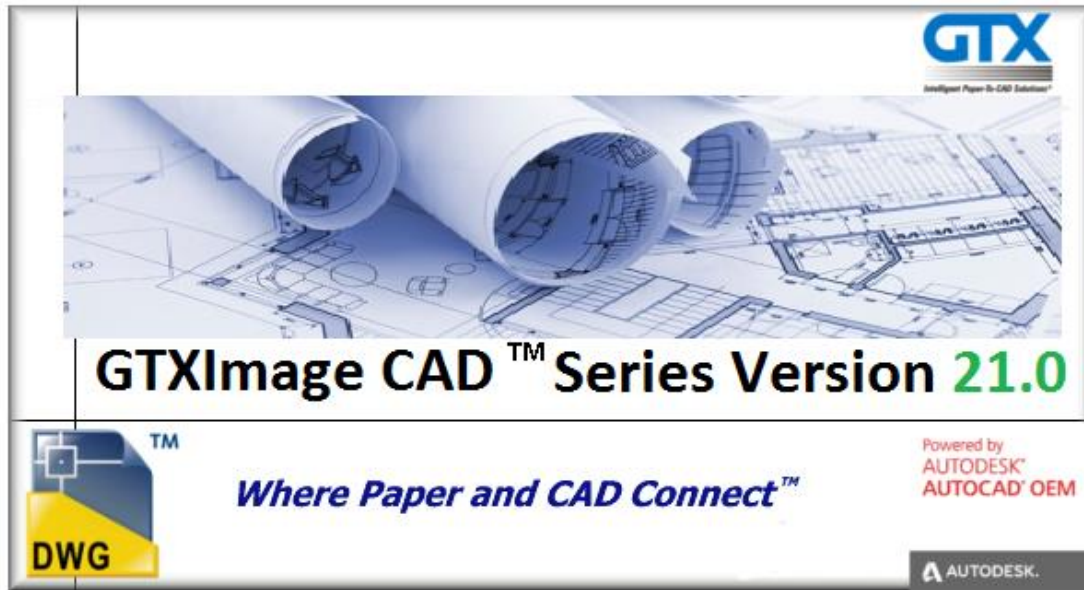
To Uninstall simply go to **Start - Settings - Control Panel – Programs and Features – Image CAD Series V21.0** or re-insert the DVD Install GTXImage CAD Series V21.0 again. You will be prompted to remove the product.

This will start the uninstall wizard. Upon running Uninstall, a dialog appears making sure you want to remove the application from your system. Click **Uninstall**.



While uninstalling a window will appear to show the progress of the uninstall.

When Uninstall wizard is complete, click **Finish** to exit.



GTX Europe Ltd
Unit 9a, Intec 2, Wade Road,
Basingstoke, Hants
RG24 8NE-UK
Email: info@gtx.co.uk
Phone: +44 (0) 1256 814444
Fax: +44 (0) 1256 364887

REMARKS:

GTX®, GTXRaster CAD®, GTXRaster CAD® PLUS and Intelligent Paper to CAD Solutions® are registered trademarks of GTX.
GTXImage CAD™, GTXImage Edit™, GTXImage CAD PLUS™, GTXSmartCAD Edit™, GTX@ICR PLUS™, Intelligent Object Picking™
AutoClean™ & GTXScanClean™ are trademarks of GTX. U.S. Patent No. 7,016,536 applies.

Windows® is a registered trademark of Microsoft Corp.

AutoCAD® & Autodesk® are registered trademarks of Autodesk, Inc.

FLEXNet® is a registered trademark of Flexera™ Software.

FLEXENABLED™ is a trademark of Flexera™ Software.

CQuantizer © is copyright of Jeff Prosis 1996-1997

PDFLib V 9.1 & PDFLib TET 5.0 is a copyright of PDFlib GmbH.

All other brand names, product names, service marks or trademarks belong to their respective holders.

©Copyright GTX Corporation 2017. All Rights Reserved.