



GTX Europe Ltd

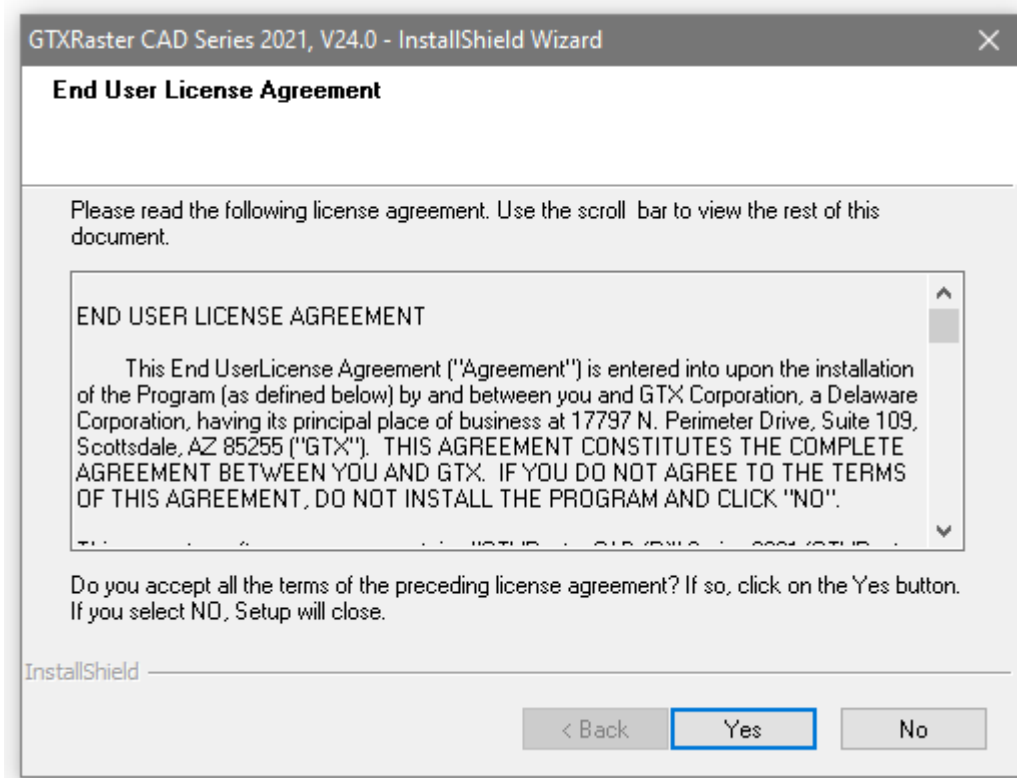
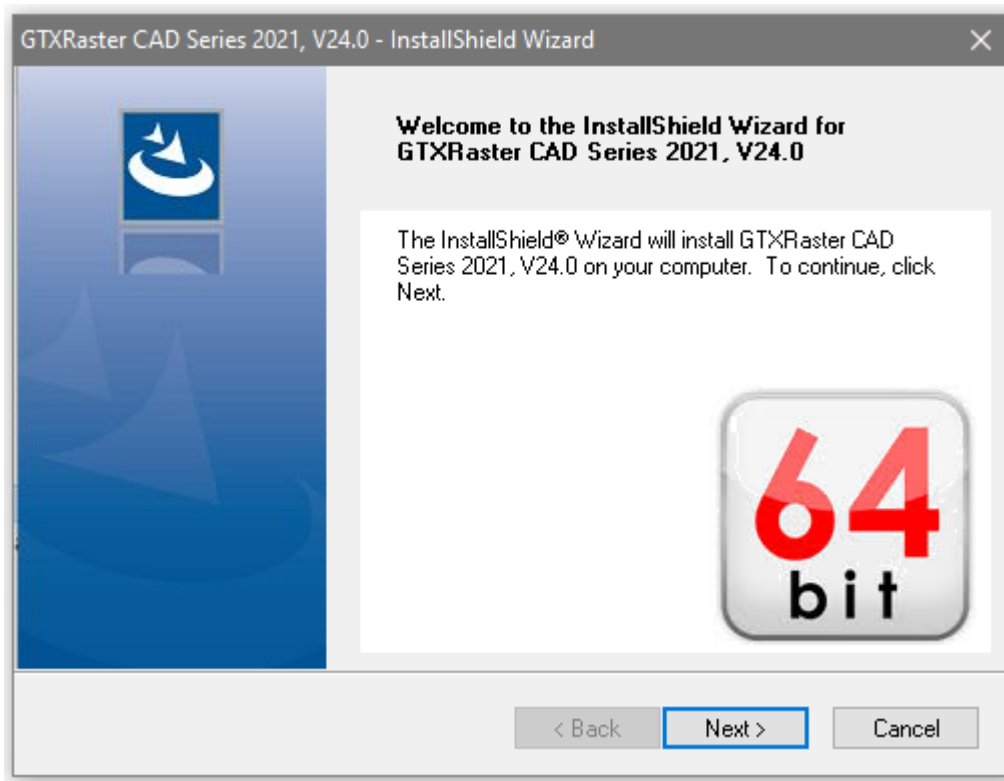
GTXRaster CAD

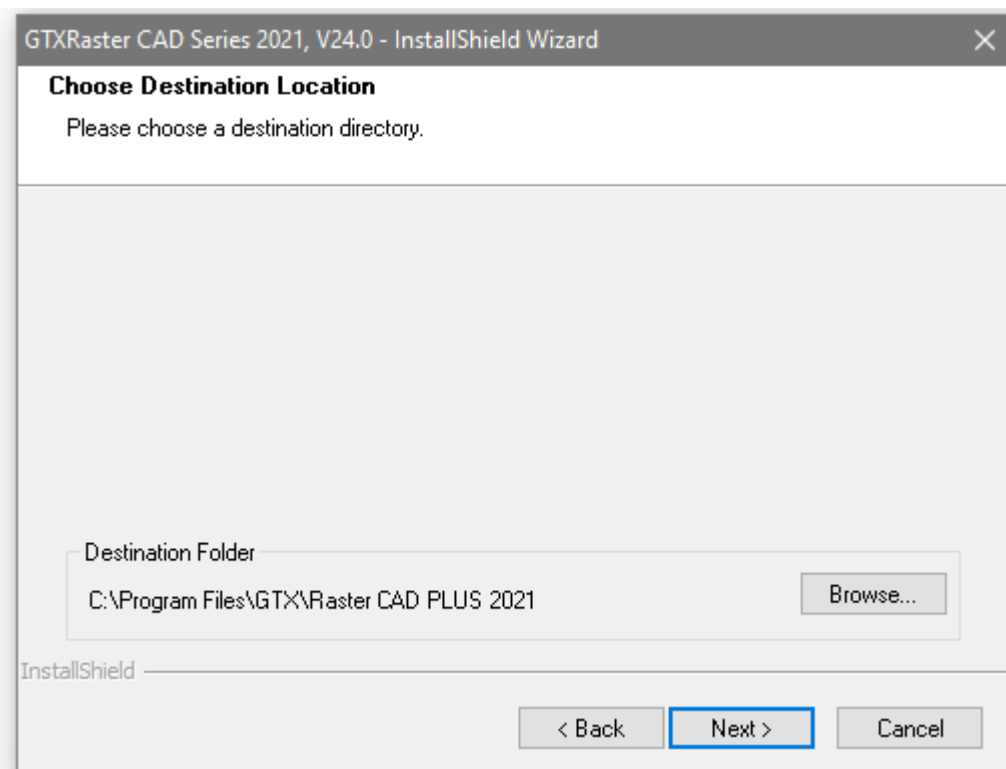
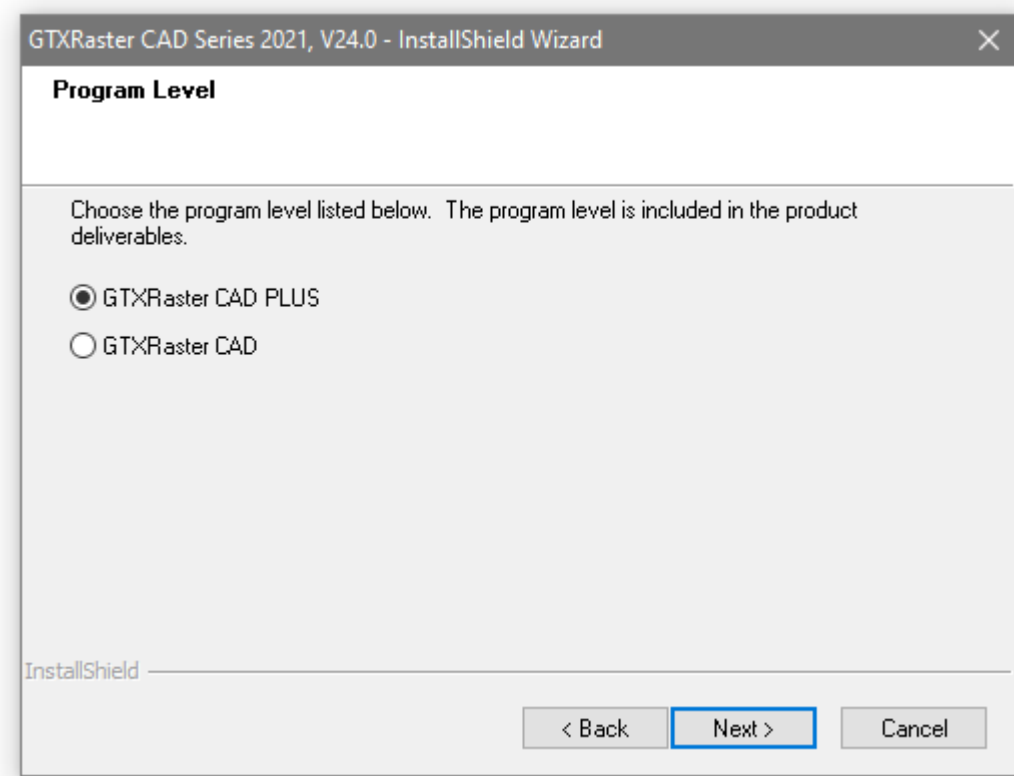
Series 2021

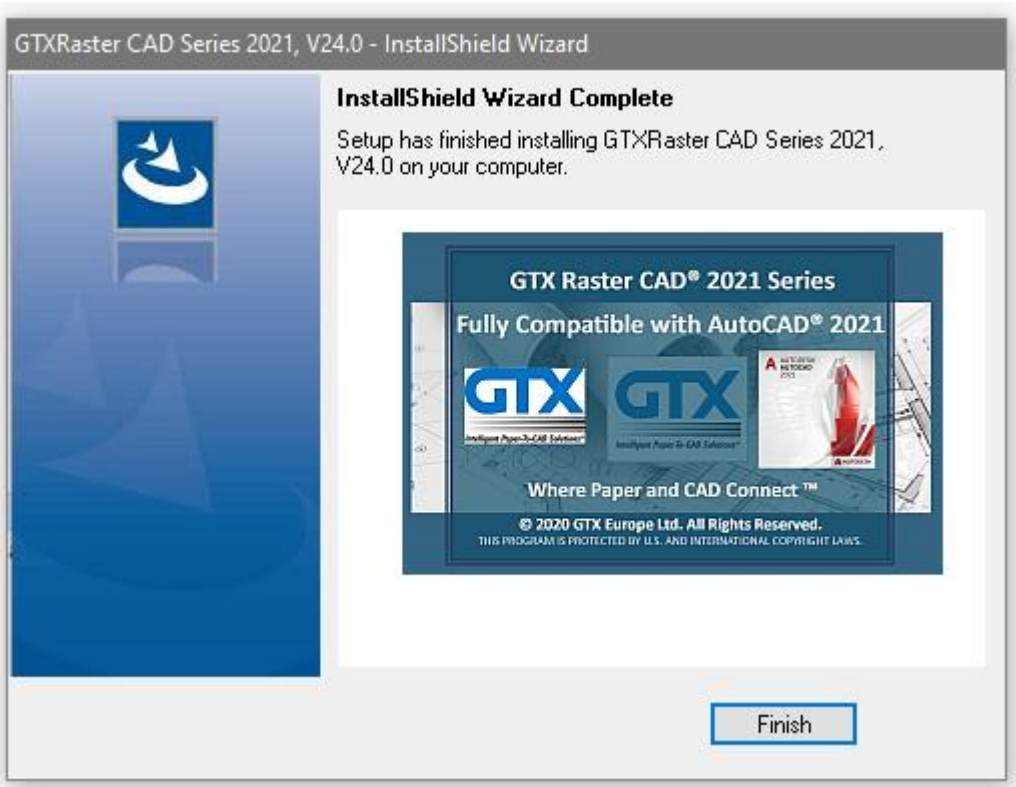
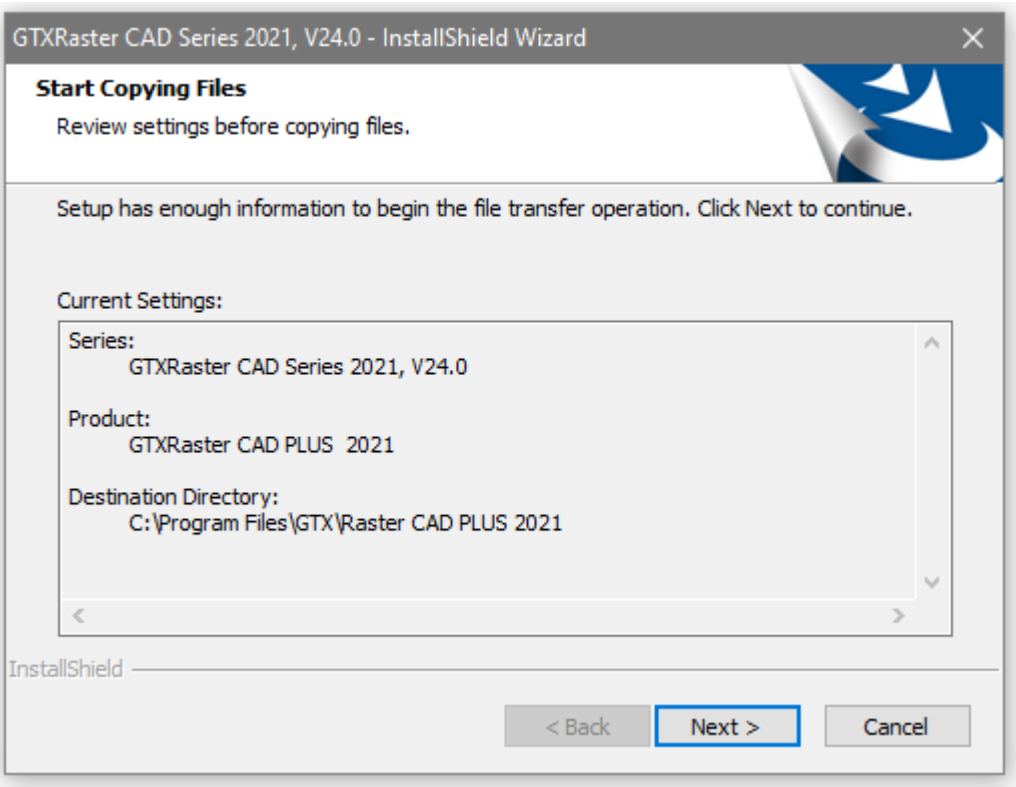
Installation Dialogs

New GTXRaster CAD Series 2021 Installation dialogs

The following install dialogs will appear when you run the GTXRaster CAD 2021 Series executable.





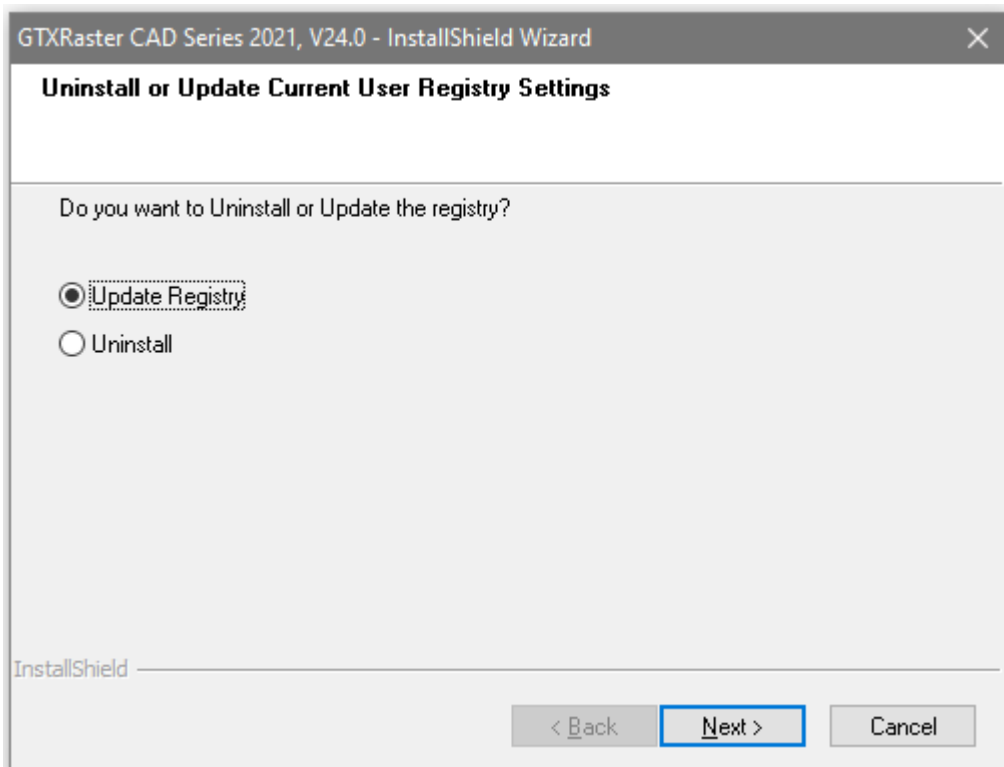
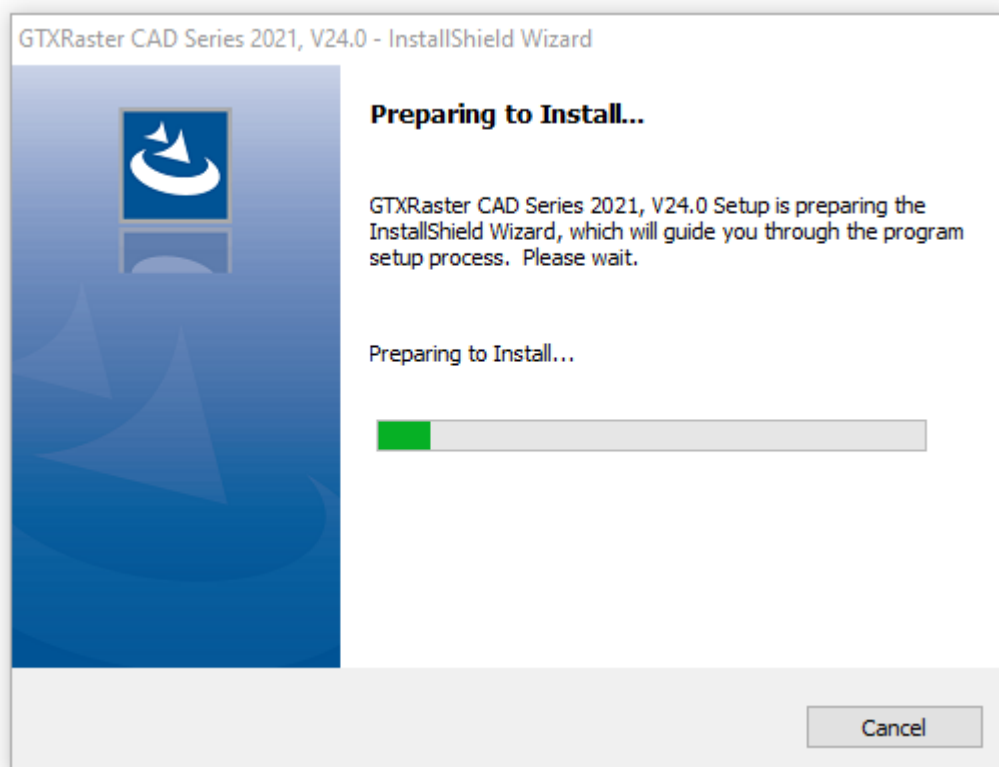


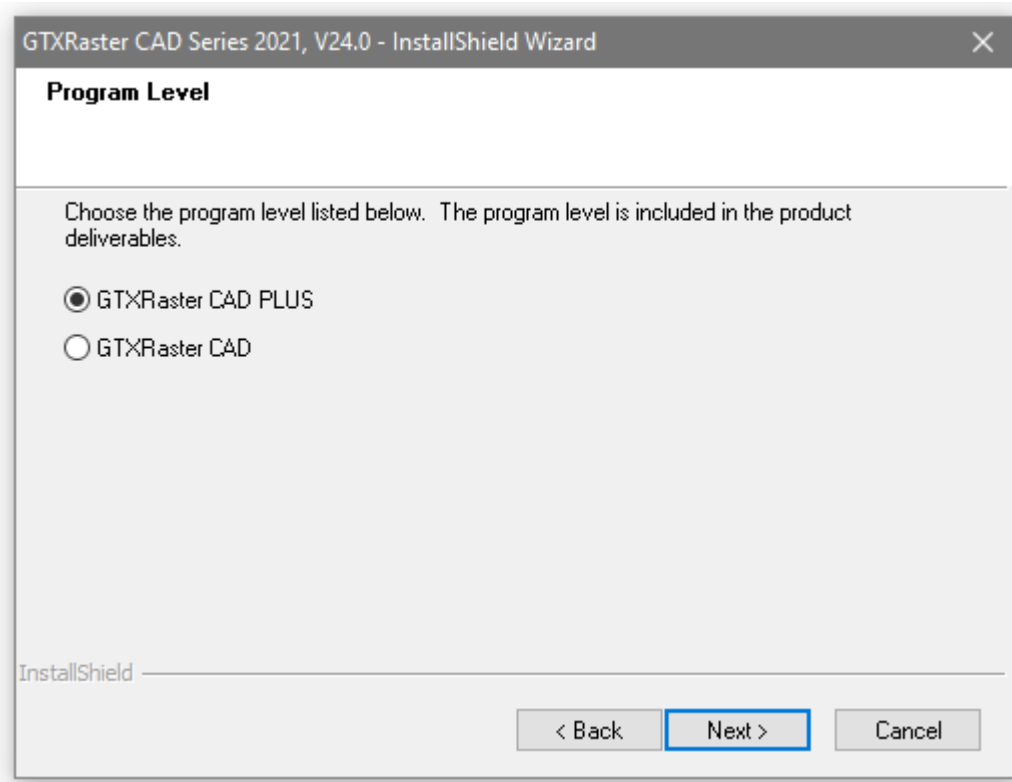
New GTXRaster CAD Series 2021

Update Registry dialogs

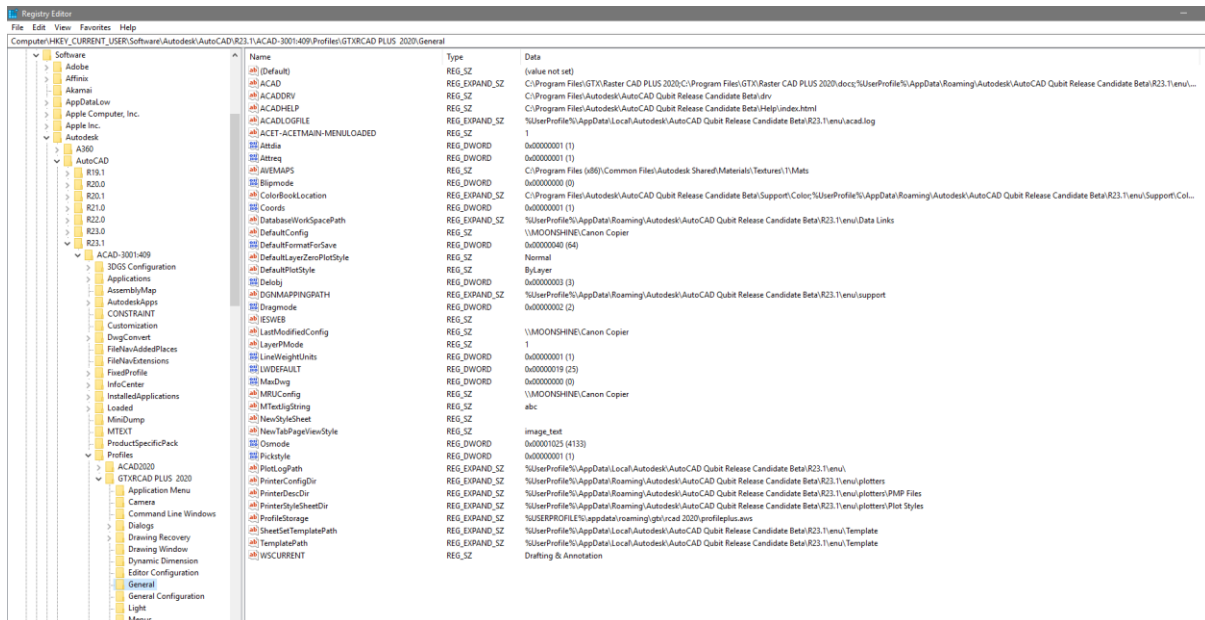
The Update Registry option is used when you have installed GTXRaster CAD Series under the Admin or a different user.

The Update Registry option will create the GTX profile and the GTX shortcut for the logged on user. In order to perform the update registry function you need to run the GTXRaster CAD Series installer executable again or select the program from the "Program & Features" list from the installed programs.





Once you have completed the update registry function, the installer will create the GTX profile for the current user in the registry on the PC in HKEY_CURRENT_USER



New GTXRaster CAD Series 2021

Uninstall dialogs

In order to perform the Uninstall function you need to run the GTXRaster CAD Series installer executable again or select the program from the "Program & Features" list from the installed programs.

