



SMS R1[®]

SIGN MAKING SYSTEM

Multi-colour labels in any shape and quantity



**Prints and Cuts labels
in one fast process**

**Unmatched ribbon saving
up to 90%**

**Network and USB
connected**

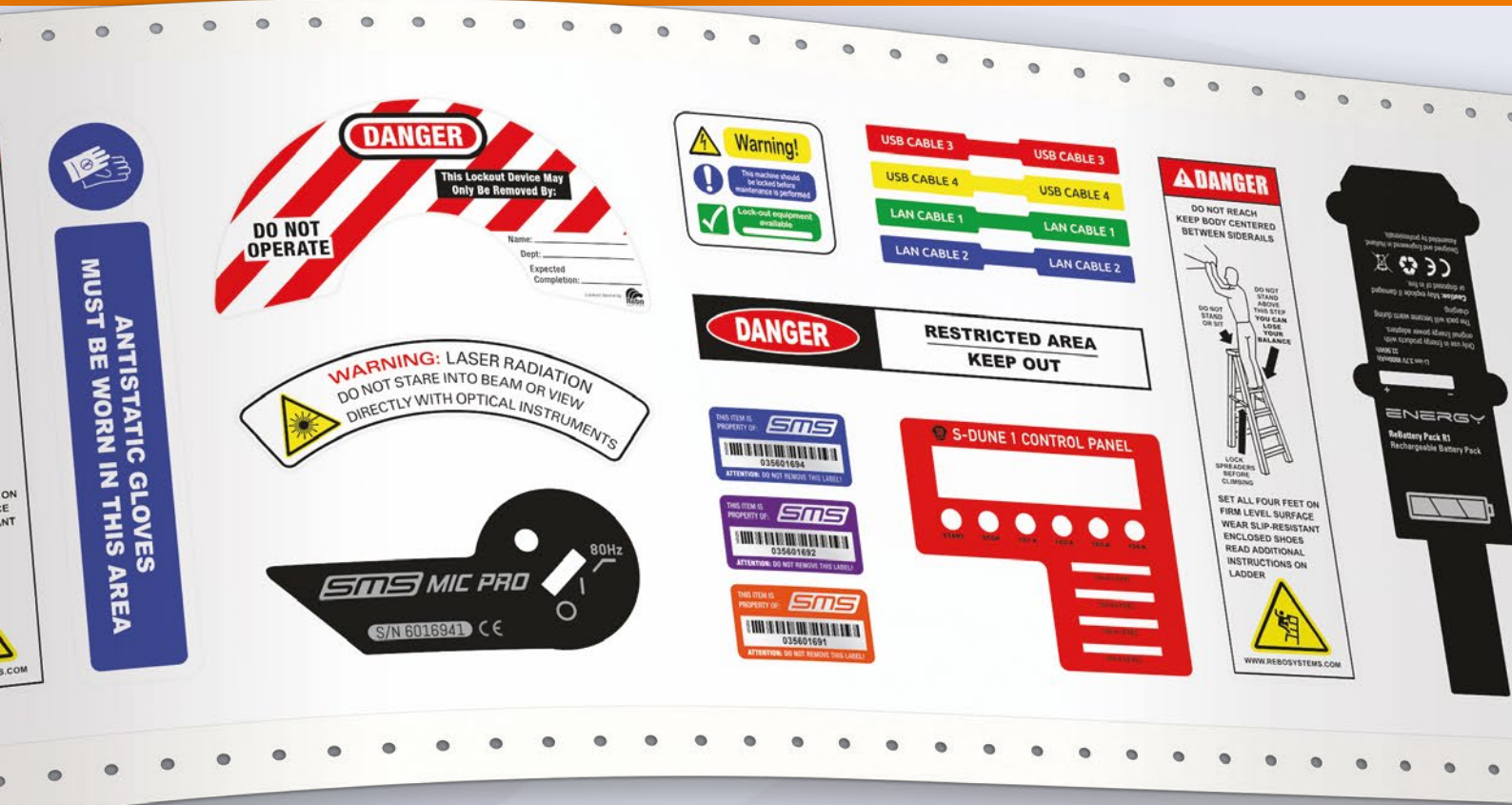
**Health & Safety labels | Machine plates | Product ID labels
Cable & Wire marking | Pipe marking | Warehouse labels
Control panel labels | Maintenance & Inspection labels**

SMS-R1 - Print Multi-colour signs and labels straight from your desktop

The SMS-R1 is a high speed, easy to use sign and label printer that incorporates a wealth of time and money saving features. Capable of printing up to 14 different colours and cutting out any shape, the versatility of the R1 makes it a cost saving production tool and an on-demand solution.

You can produce one, multiples of one or even multiples of varied sizes and coloured signs or labels in one fast process. Our unique and independent driver also means you can use your own preferred software to create designs or you can use our recommended design software – it's your choice.





WHAT'S GOOD ABOUT THE SMS-R1

Auto-Feed™

The Auto-Feed™ technology is designed to let you load the tape rolls with ease. When you're loading the tape inside the SMS-R1 it will automatically detect it and will run it through to the starting position of your print job.

Ribbon Saving technology

The SMS-R1 senses when the ribbon isn't required and will not feed in a print process, giving enhanced cost savings over other systems currently available.

Dust-free design

Its closed design keeps the whole production contained within the unit to stop contamination of the material and the print head – preventing failed print outs and needless waste.

Animated colour command touch screen

Gives clear user prompts using concise graphics – all from the SMS-R1 itself and not confined to the screen of the PC driving the system. Clear colour change prompts guarantee minimised wastage.

Slide-in Cassettes

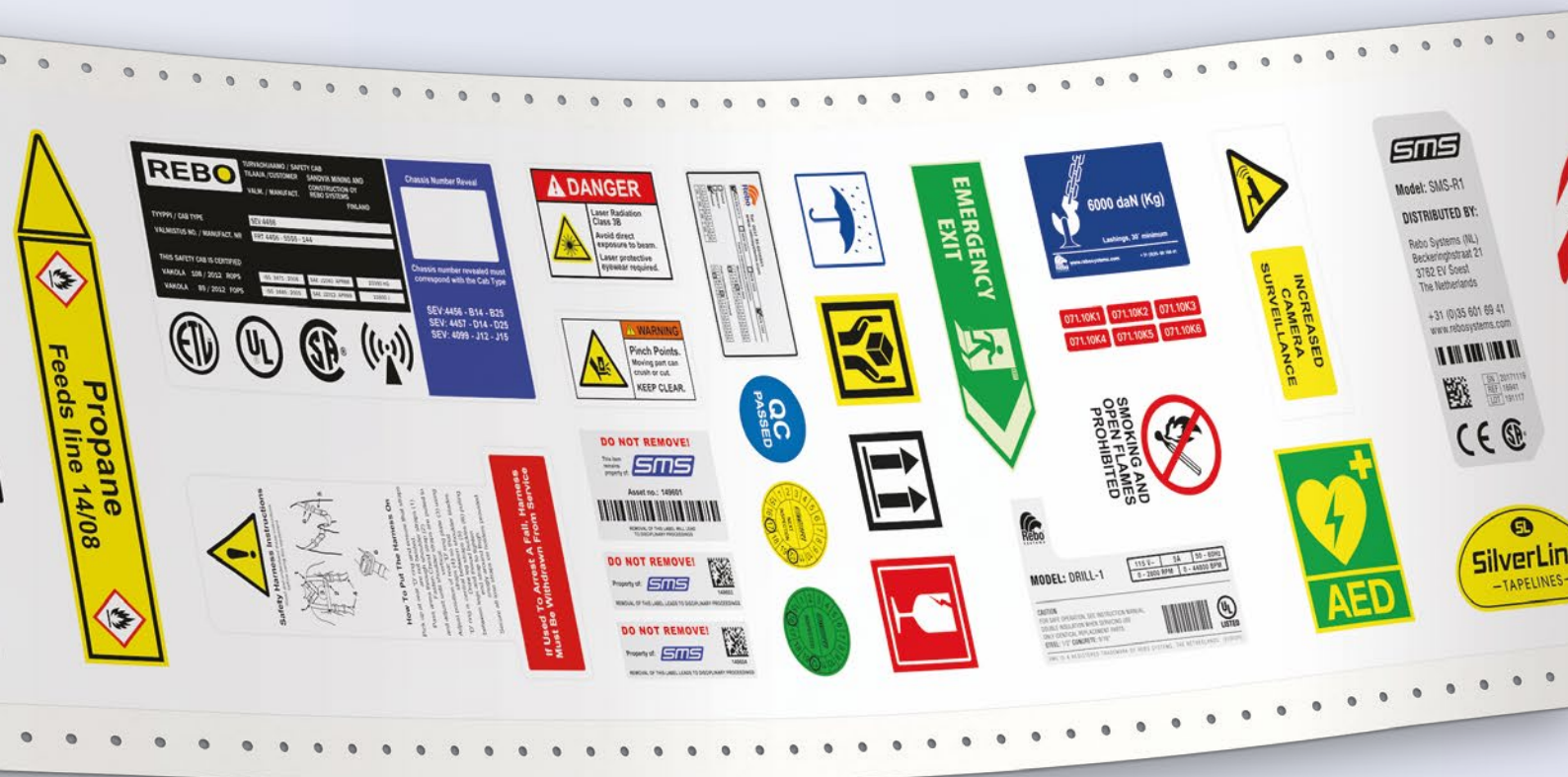
Ribbon cassettes slide conveniently into the side of the SMS-R1 – and are automatically ejected. No clumsy lids to open and close – no time consuming manual placement.

Automatic Tape & Ribbon recognition

The SMS-R1 will automatically detect which colour tape and/or ribbon is being loaded and how much material there is left. The system will not start printing if any of the required materials are insufficient.

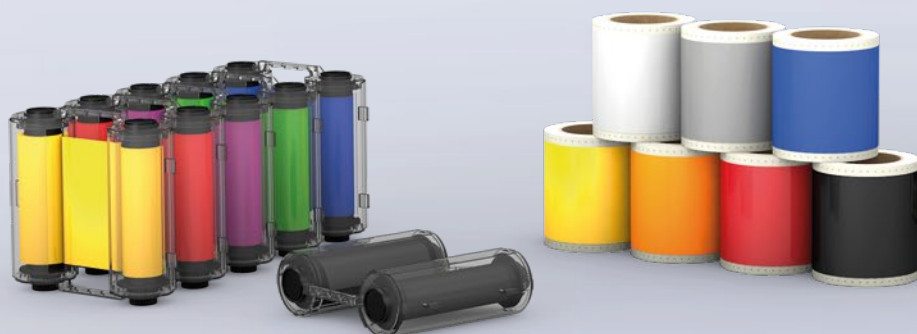
Overlaminates Function

The system will pause after printing, allowing a clear laminate to be placed over the labels, then it will continue to cut – delivering extra durability and protection.



A MATERIAL AND COLOUR FOR EVERY CONDITION, CHALLENGE AND ENVIRONMENT

- Industrial vinyl with up to 10 years outdoor durability
- Extra strength, high adhesive vinyl and polyester for difficult surfaces
- 15 types of Polyester in varied colours and grades for high temperature and low halide content
- Replaceable tapes, perfect for logistics and replacing magnetic labels
- Reflective materials
- Glow in the dark materials – for egress and emergency marking
- Hi Viz materials – for extra visibility
- Metal detectable materials – for the food and beverage industry
- Large range of print ribbon colours to meet all legislations and norms



For a **FREE** sample pack of our label materials
 contact us on info@rebosystems.com or call us on +31 (0)35 601 6941

One system delivering endless solutions

The SMS-R1 is a unique sign and labelling resource, it will allow any industry to create essential signs and labels when wanted, in the quantity wanted and at the best cost. As a product with its unique cutting function, labels can be produced in a myriad range of special shapes so even low volume, bespoke labels are on-hand in minutes.

Industries have wide ranges of label needs and the SMS-R1 can deliver everything from safety signs, cable and wire marking, maintenance labels, pipe identification, serial plates, component marking and 'part of product' labelling.

A dependable system, delivered with top class software! **NiceLabel**

- Professional software with extensive print & design capabilities
- Easy to use Design Wizards speed up production
- Design and edit texts, barcodes, lines, shapes and images
- Advanced functionality for multiple field linking
- Thousands of industrial symbols and icons in compliance with the latest regulations
- Advanced design tools like rich text, linestyles, group, textframes with automatic font size
- Easily import data into your labels from data bases and spread sheets (Excel, Acces)
- Microsoft® certified software

Printer specifications

Printing Method	Thermal Transfer
Resolution	300dpi
Print speed	Max. 50mm/s (2ips)
Cut speed	Max. 300mm/s
Print Length	Min. 10mm ~ Max. 10.000mm
Print Width	Max. 100mm
Cut Width	Max. 105mm
Dimensions	L 375mm x W 350mm x H 225mm
Weight	13kg
Sensors	Tape length / Tape colour / Ribbon length / Ribbon colour / Auto-feed
Operation Interface	1x On/Off button / 1x Full colour command touch screen
Connectivity	LAN, USB
Agency Listing	CE, EMC
Media Type	Continuous
Ribbon Type	Wax, Resin, Wax/Resin

Visit our comprehensive website to review the large range of material available!

www.rebosystems.com



Rebo B.V.
Beckeringhstraat 21
3762 EV Soest
Netherlands

+31 (0)35 - 601 69 41
@ info@rebosystems.com
sales@rebosystems.com
www.rebosystems.com