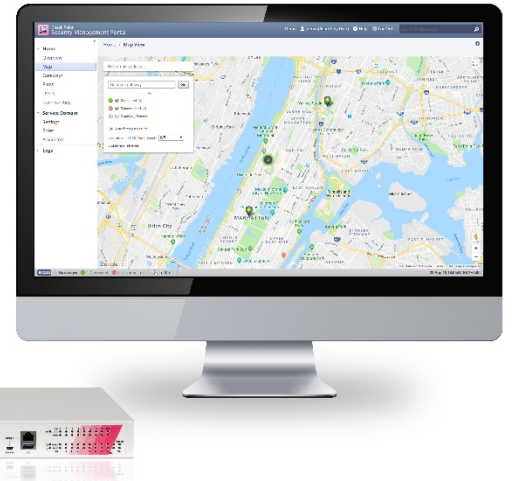


# 910 SECURITY GATEWAY



Fast. Simple. Secure.

The Check Point 910 is a high performance, integrated network security device offering firewall, VPN, antivirus, application visibility and control, URL filtering, email security and SandBlast Zero-Day Protection, all in a compact form factor that is simple to configure and manage.



Choose Check Point to Secure Your Growing Business



**Secure**

Comprehensive security, all working together to protect your organization



**Powerful**

Enable the strongest protections without compromising performance



**Simple**

Easy and simple management with automated reporting

## SPOTLIGHT

### Advanced security, uncompromising performance

The Check Point 910 Next Generation Firewall combines the most comprehensive security protections to safeguard your branch and small office deployments. Recommended for up to 300 users.

The 910 Security Gateway offers integrated, multi-layered security in a compact 1 Rack Unit form factor. Setup can be done in minutes using pre-defined security policies and our step-by-step configuration wizard. Check Point 910 Security Gateways are conveniently manageable both locally via a Web interface and centrally by means of a cloud-based Check Point Security Management Portal (SMP). The 910 comes standard with eighteen (18) Ethernet ports; one WAN port, one copper or fiber DMZ port and 16 LAN ports configured as a LAN switch. Segment the 16 port LAN switch as needed for added security.

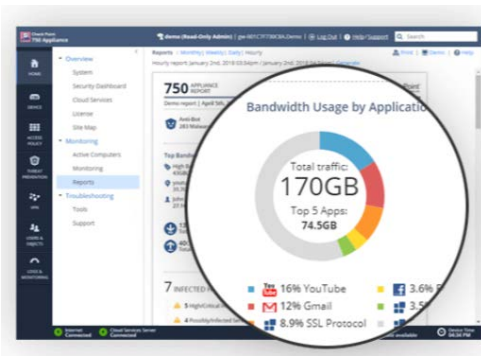
#### Comprehensive Protection

- ❖ Next Generation Firewall
- ❖ IPsec and SSL VPN
- ❖ Application Control and Web Filtering
- ❖ Intrusion Prevention
- ❖ Antivirus
- ❖ Anti-Bot
- ❖ Anti-Spam
- ❖ SandBlast Threat Emulation (sandboxing)



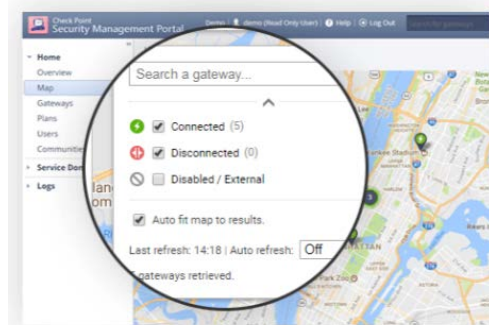
#### Simple, Intuitive Monitoring and Reporting

The web interface shows logs, active computers, and hourly, daily, weekly and monthly reports. In network analysis find top applications and users consuming the most bandwidth. Security analysis shows users visiting high-risk sites and using high-risk applications. Also see any incidents or infected hosts found during the reporting period.



#### Cloud Management

The intuitive web-based user interface in the cloud-based Security Management Portal, enables managed service providers to provision security efficiently for small businesses. With a robust architecture that scales to manage over 10,000 Check Point Small Business Appliances, the SMP keeps pace with your security as a service business. End users can leave security to the managed service provider so they can focus on growing their own business.



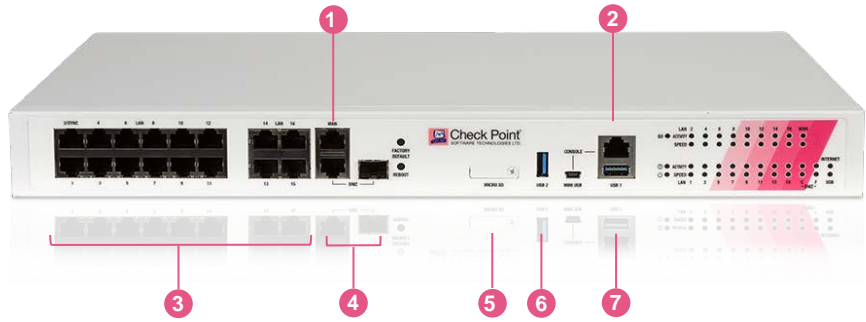
## STEP UP TO 5<sup>TH</sup> GENERATION CYBER SECURITY

Gen V security leaves the patch work and best-of-breed deployments of the past behind. Instead, it's characterized by an architecture that unifies all networks, cloud, and mobile, and supported by real time threat intelligence.



## 910 Security Gateway

- 1 1x 1GbE WAN port
- 2 RJ-45/micro USB console port
- 3 16x 1GbE LAN ports
- 4 1x 1GbE copper/fiber DMZ port
- 5 Micro SD slot (for added logs storage)
- 6 2 of 2x USB ports
- 7 1 of 2x USB ports



## Performance

### Ideal Testing Conditions

- 4 Gbps of UDP 1518 byte packet firewall throughput
- 800 Mbps IPS
- 1 Gbps of AES-128 VPN throughput
- 40,000 connections per second, 64 byte response
- 850,000 concurrent connections, 64 byte response

### Real-World Testing Conditions

- 2 Gbps of firewall throughput
- 800 Mbps Next Generation Firewall
- 350 Mbps of Threat Prevention<sup>1</sup>

<sup>1</sup> performance measured with a real-world SMB HTTP traffic blend, a typical rule-base, NAT, logging and the most secure threat prevention

## Hardware

### Network and Other Ports

- WAN: 1x GbE copper port
- DMZ: 1x GbE copper/1x GbE fiber (transceiver not included)
- LAN Switch: 16x GbE copper ports
- Console: 1x RJ-45, 1x Mini USB
- USB: 2x USB 3.0 ports
- SD Card Slot: Micro SDHC
- 3G/4G external USB modem support ([sk92809](#))

## Software

### Security

- FW, VPN, User Awareness, QoS, Application Control, URLF, IPS, Anti-Bot, AV, Anti-Spam, sandboxing

### Unicast, Multicast Routing

- OSPFv2, BGPv4, 4++, RIP, PIM (SM, DM, SSM), IGMP

### Mobile Access User License

- 300 in the default package, 300 maximum

## Physical

### Power Requirements

- Single Power Supply rating: 1.7A, 110 to 240V (50-60Hz)
- Power consumption max: 55W
- Maximum thermal output: 187.7 BTU/hr.

### Dimensions

- Enclosure: 1RU
- Dimensions (WxDxH): 430x44x281mm, (16.9x1.7x11.1in.)
- Weight: 3.64 kg (8.1 lbs.)

### Environmental Conditions

- Operating: 0° to 40°C, humidity 5% to 95%
- Storage: -45°C ~ 60°C, humidity 5% to 95% at 60°C

### Certifications

- Safety UL/c-UL, IEC 60950 CB
- Emissions: EMC: EN55022 Class B, FCC: Part 15 Class B
- Environmental: RoHS, REACH, WEEE

## ORDERING INFORMATION

### 910 APPLIANCES<sup>1</sup>

910 Security Appliance with Threat Prevention services for 1 year	CPAP-SG910-NGTP
910 Security Appliance with Threat Prevention and SandBlast services for 1 year	CPAP-SG910-NGTX
910 Security Appliance with Threat Prevention, 1 year support and services bundle	CPAP-SG910-NGTP-BUN-1Y
910 Security Appliance with Threat Prevention and SandBlast, 1 year support and services bundle	CPAP-SG910-NGTX-BUN-1Y

### EXTENSIONS

Mobile Access Blade for 50 concurrent connections	CPSB-MOB-50
---	-------------

### ACCESSORIES

SFP Short range transceiver (for the DMZ 1000BaseF port)	CPAC-TR-1SX-1200R
SFP Long range transceiver (for the DMZ 1000BaseF port)	CPAC-TR-1LX-1200R
SD memory card 8 GB	CPAC-8GB-SD-1200R
SD memory card 32 GB	CPAC-32GB-SD-1200R

<sup>1</sup> 2 and 3 year packages also available in the online product catalog