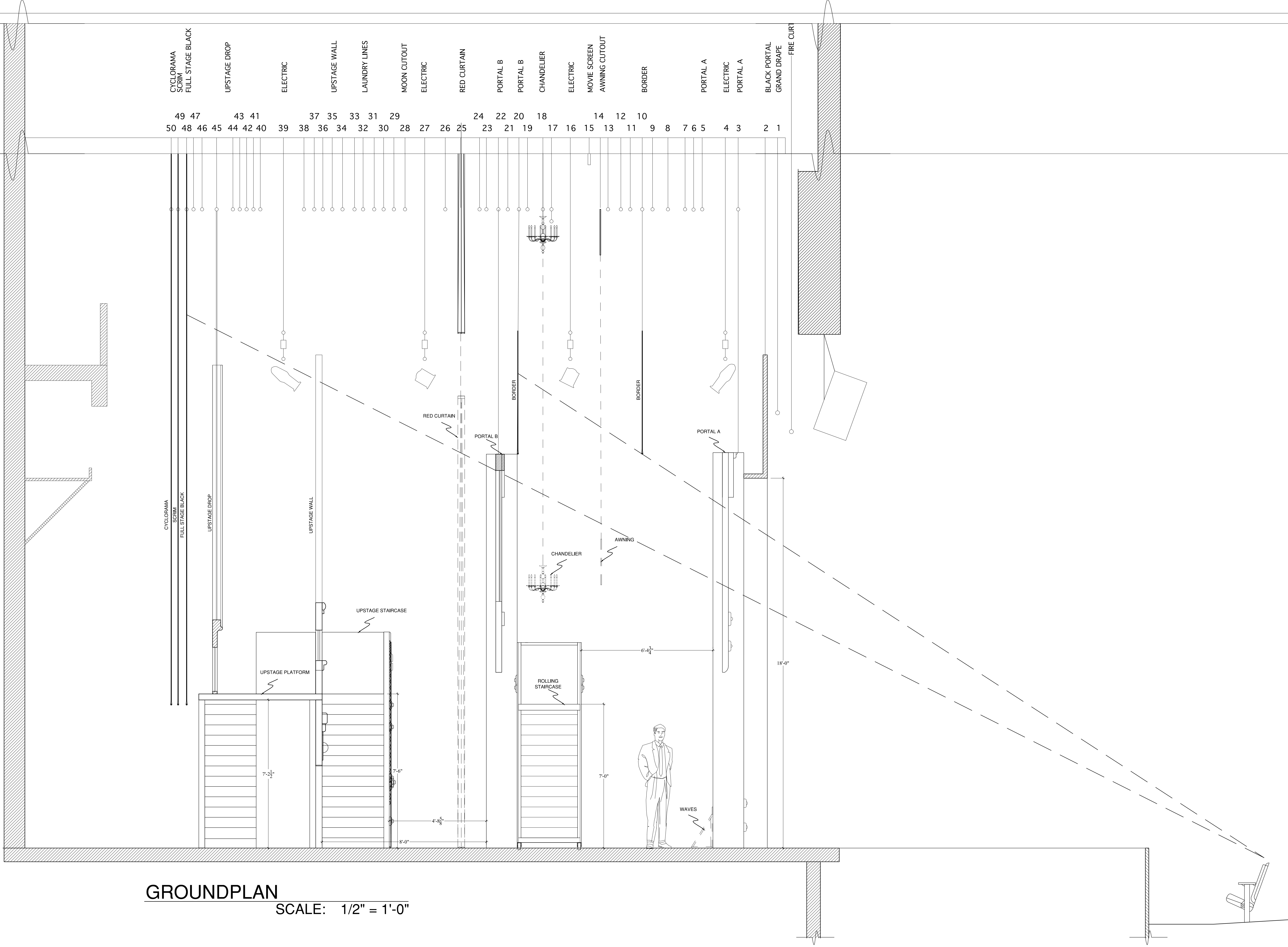


GROUNDPLAN

SCALE: 1/2" = 1'-0"

- CYCLORAMA SCRIM FULL STAGE BLACK
- UPSTAGE DROP
- ELECTRIC
- UPSTAGE WALL
- LAUNDRY LINES
- MOON CUTOUT
- ELECTRIC
- RED CURTAIN
- PORTAL B
- PORTAL B
- CHANDELIER
- ELECTRIC
- MOVIE SCREEN
- AWNING CUTOUT
- BORDER
- PORTAL A
- ELECTRIC
- PORTAL A
- BLACK PORTAL GRAND DRAPE
- FIRE CURT

- 49 47
- 50 48 46 45
- 43 41
- 44 42 40
- 39
- 38 36 34
- 37 35
- 33 31
- 29
- 28 27
- 26
- 25
- 24
- 22 20
- 21 19
- 18
- 17
- 16
- 15
- 14
- 13
- 12
- 10
- 9
- 8
- 7 6 5
- 4 3
- 2 1



THE DOLPHIN SHOW

SCENE DESIGNER:
JESSIE BALDINGER

DIRECTED BY: MAGGIE MONAHAN



DRAWING: SECTION

SCALE: 1/4"=1'-0"

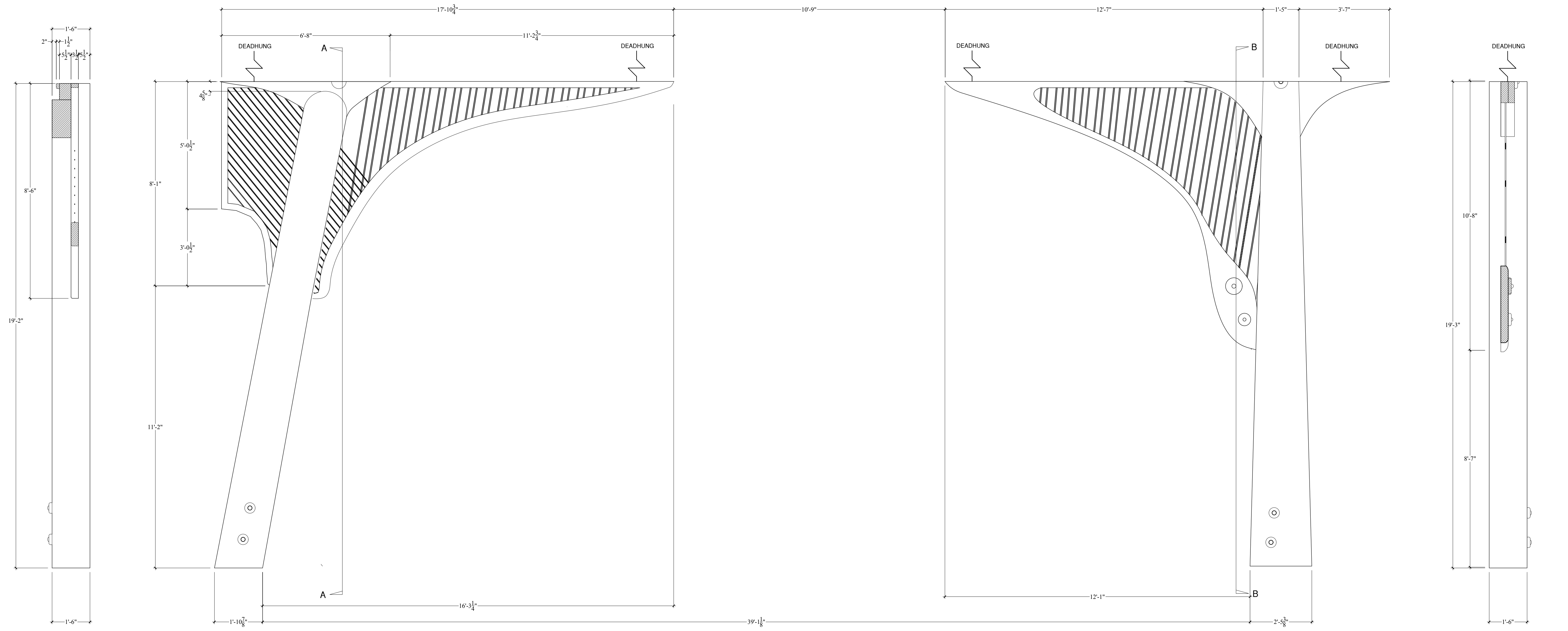
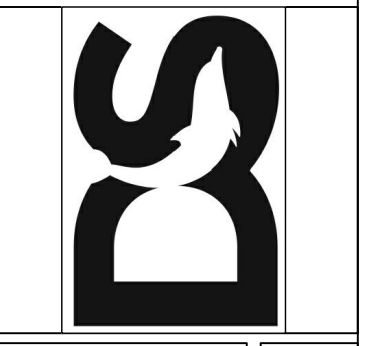
RAGTIME

PLATE:

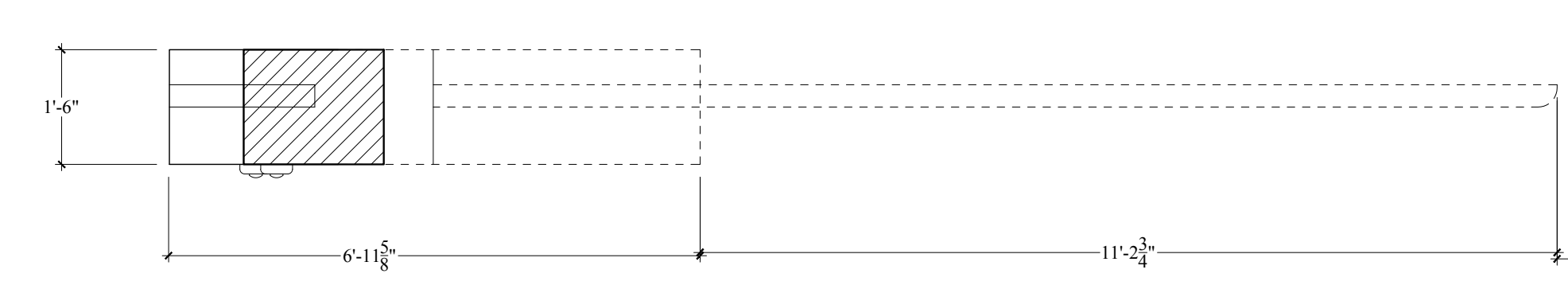
2

DATE: 1/1/18

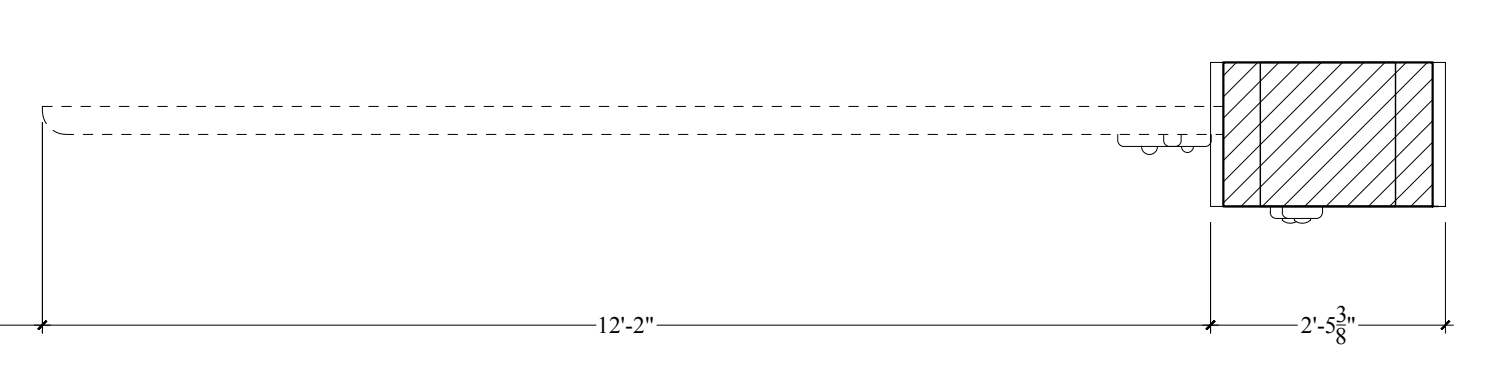
OF 9



SECTION A-A FRONT VIEW



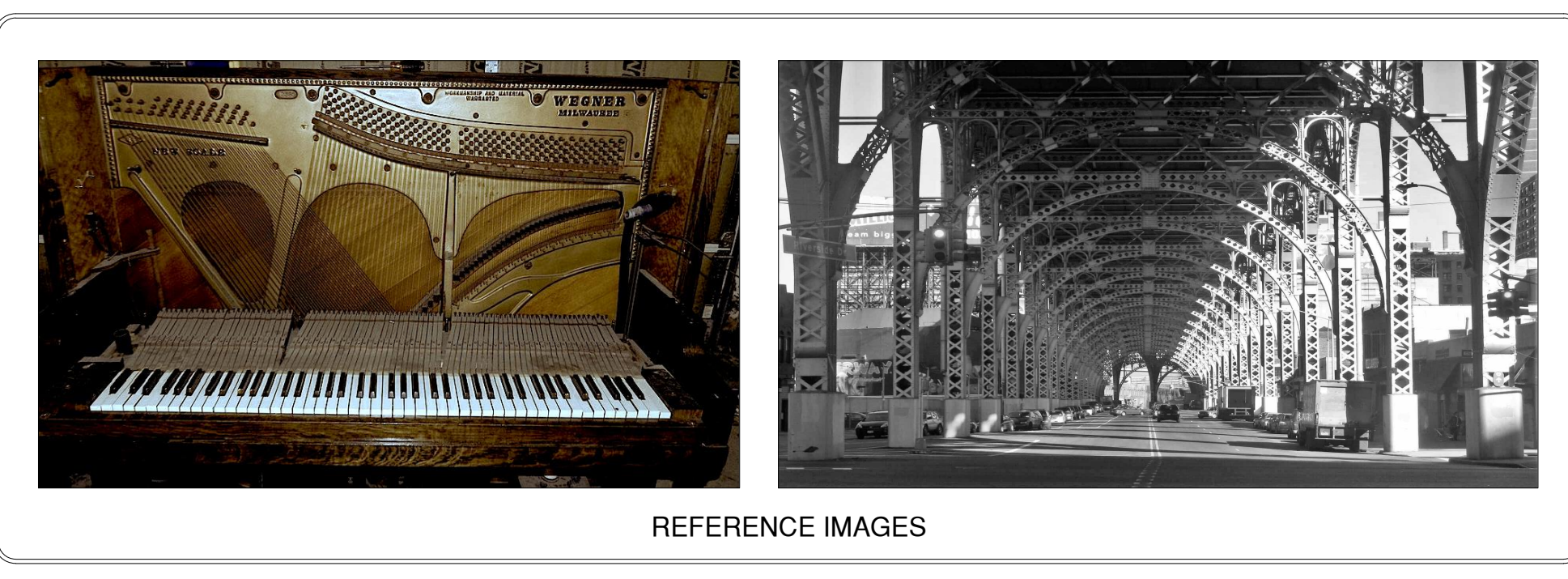
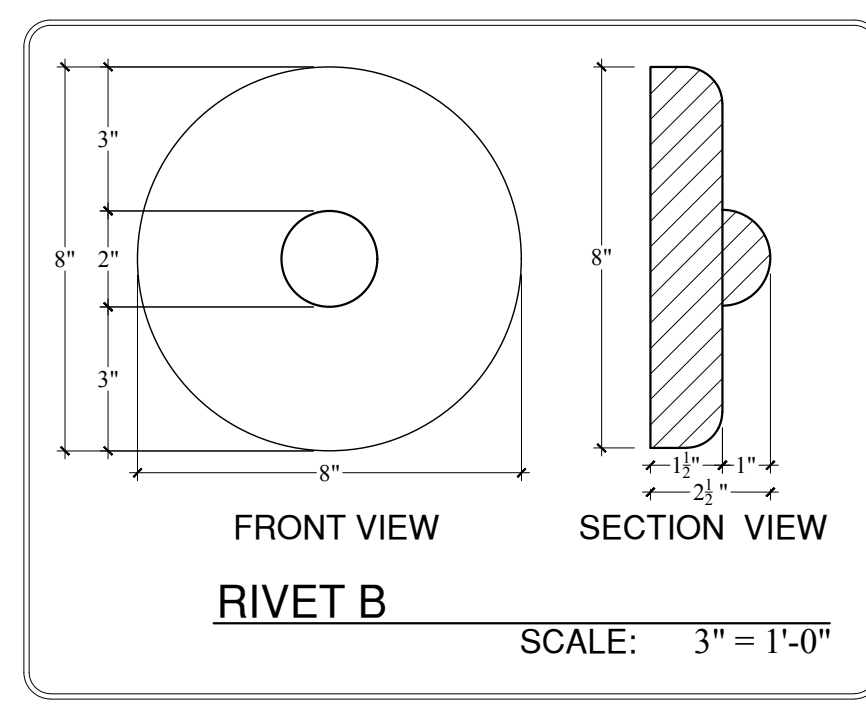
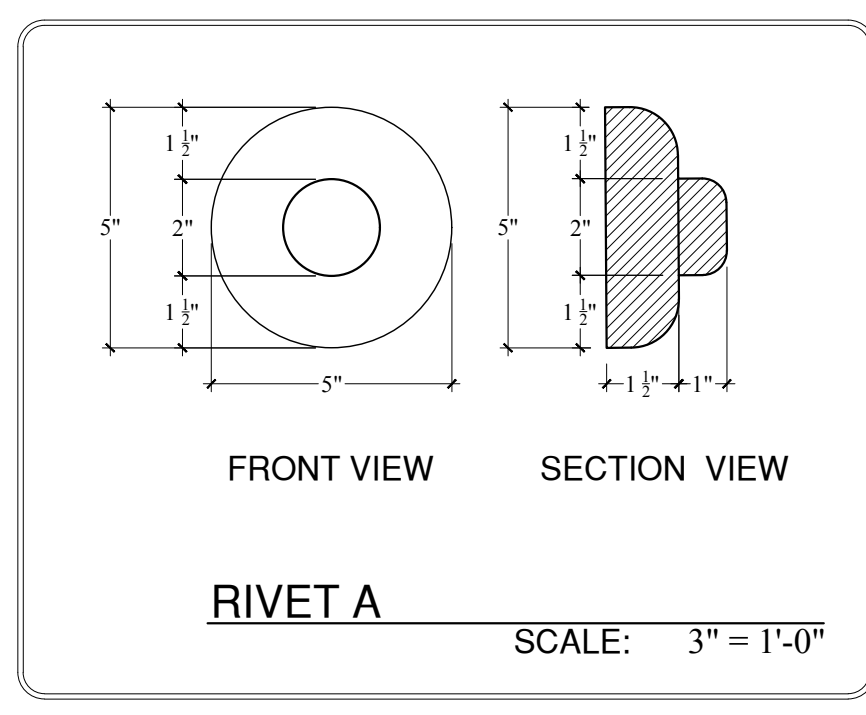
FRONT VIEW



SECTION B-B FRONT VIEW

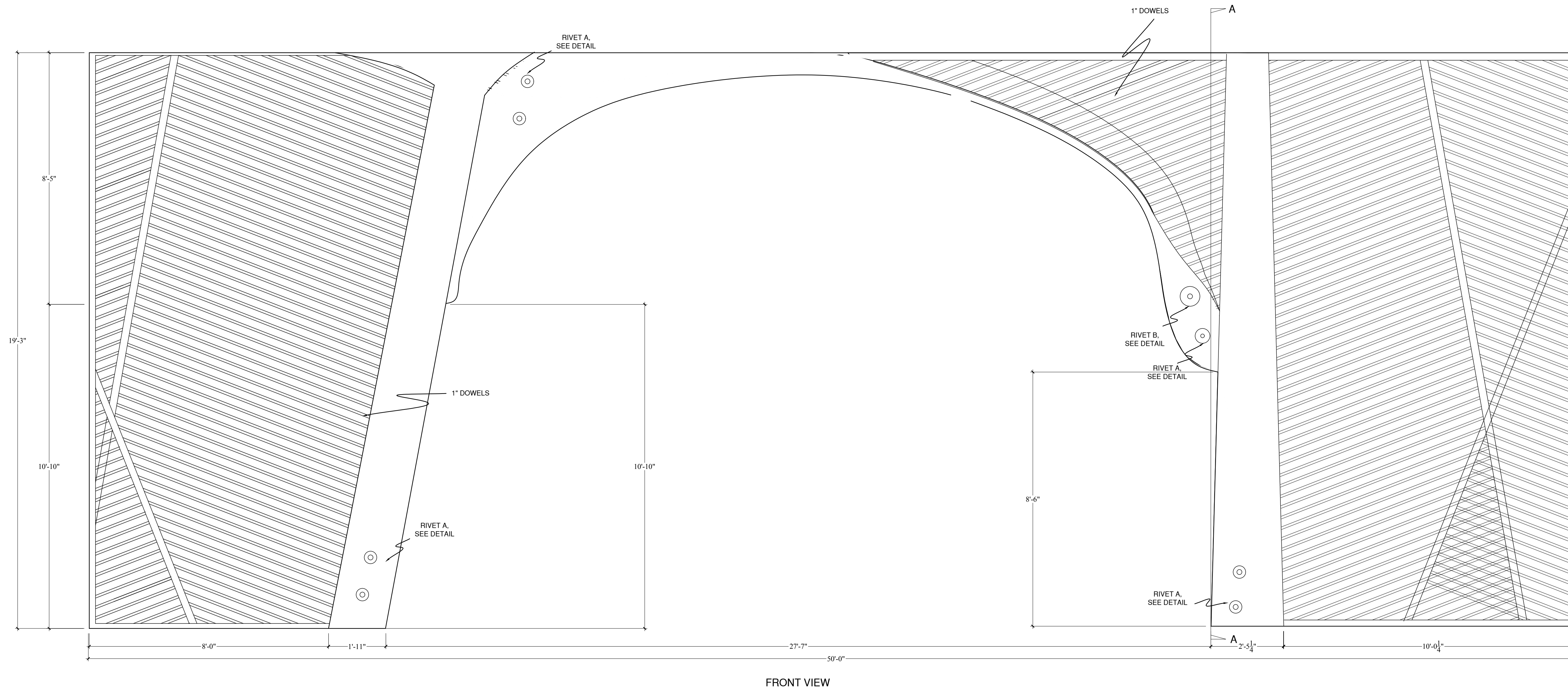
PORTAL A
 SCALE: 1/2" = 1'-0"

PLAN VIEW

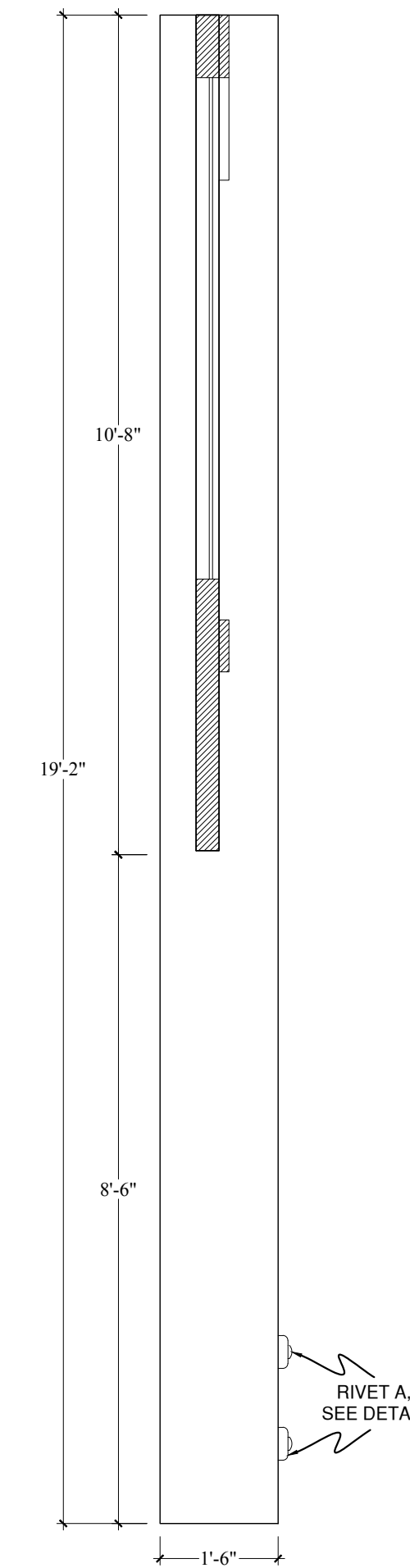


NOTES

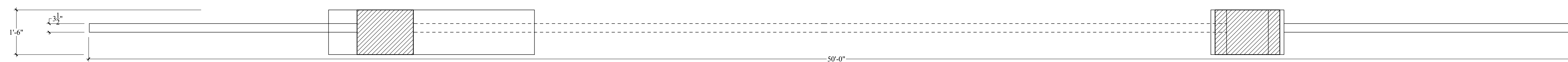
- PORTAL IS INTENDED TO LOOK LIKE A SCALED UP VERSION OF THE INNER WORKINGS OF A PIANO, AND ALSO EVOKE EARLY 1900S INDUSTRIAL ARCHITECTURE. SEE REFERENCE IMAGES
- PORTAL IS DEADHUNG TO LINESET AND IS STATIONARY THROUGHOUT SHOW
- SEE RIVET DETAILS
- DIAGONAL LINES ARE 1" DOWELS, AS NOTED
- SMOOTH FINISH THROUGHOUT WITH COPPER METALLIC PAINT TREATMENT



FRONT VIEW

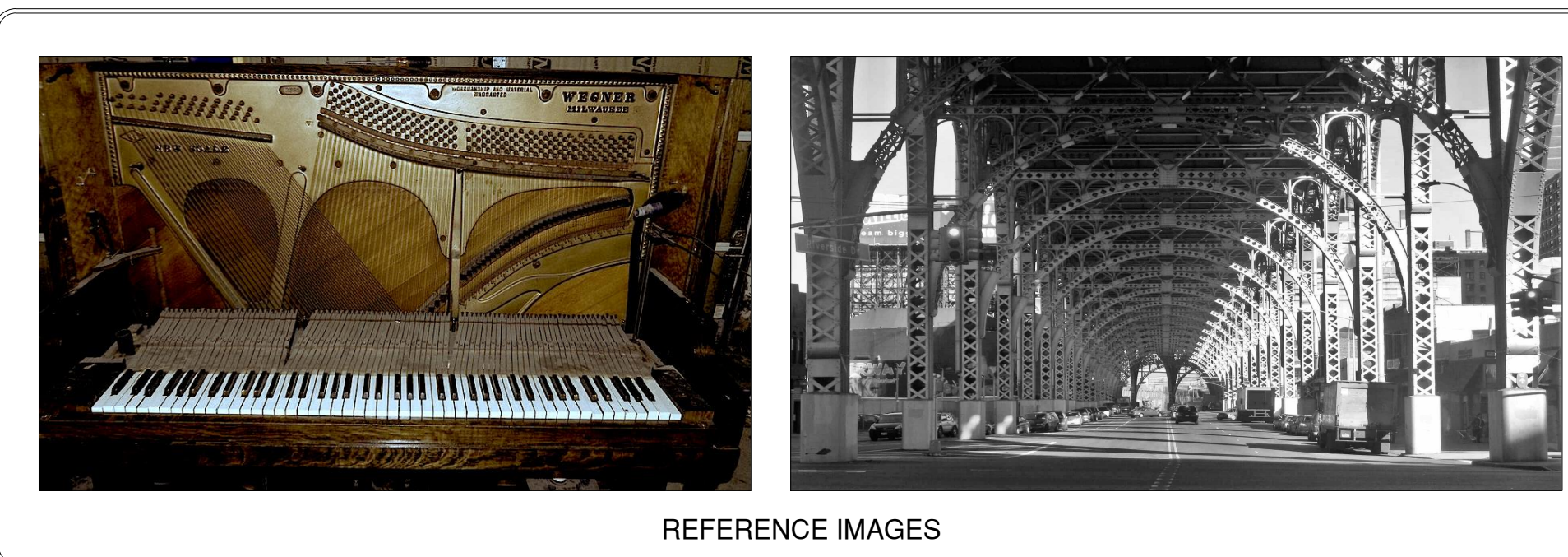
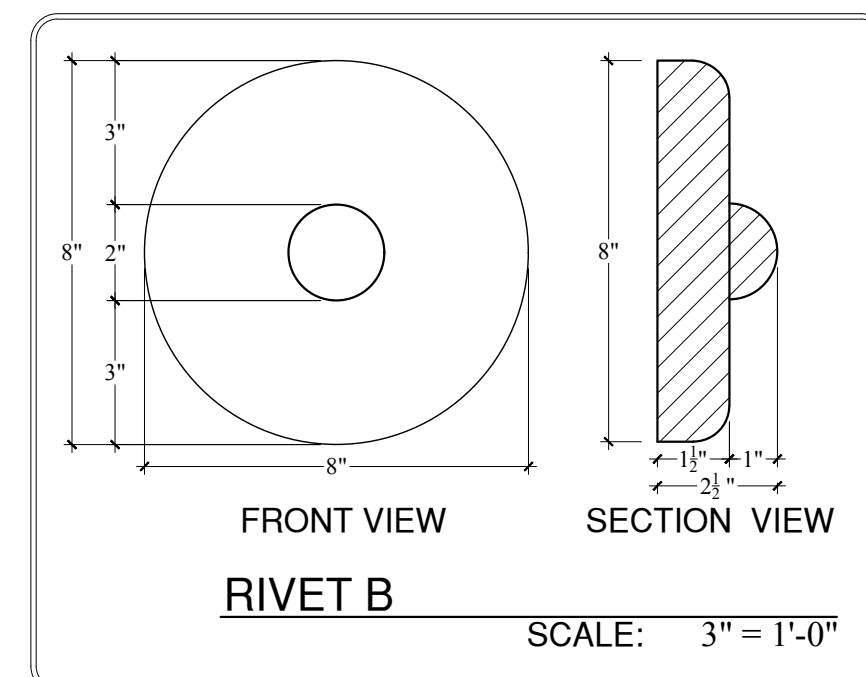
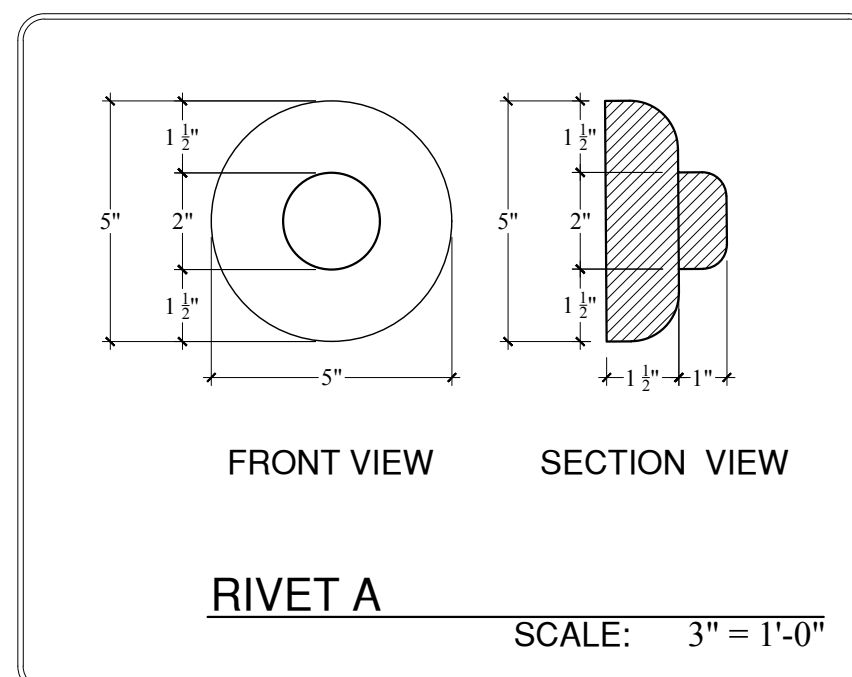


SECTION VIEW



PLAN VIEW

PORTAL B
SCALE: 1/2" = 1'-0"

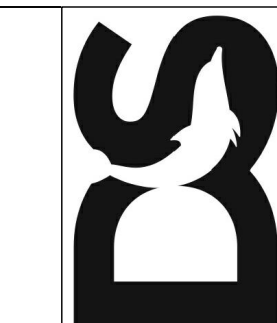


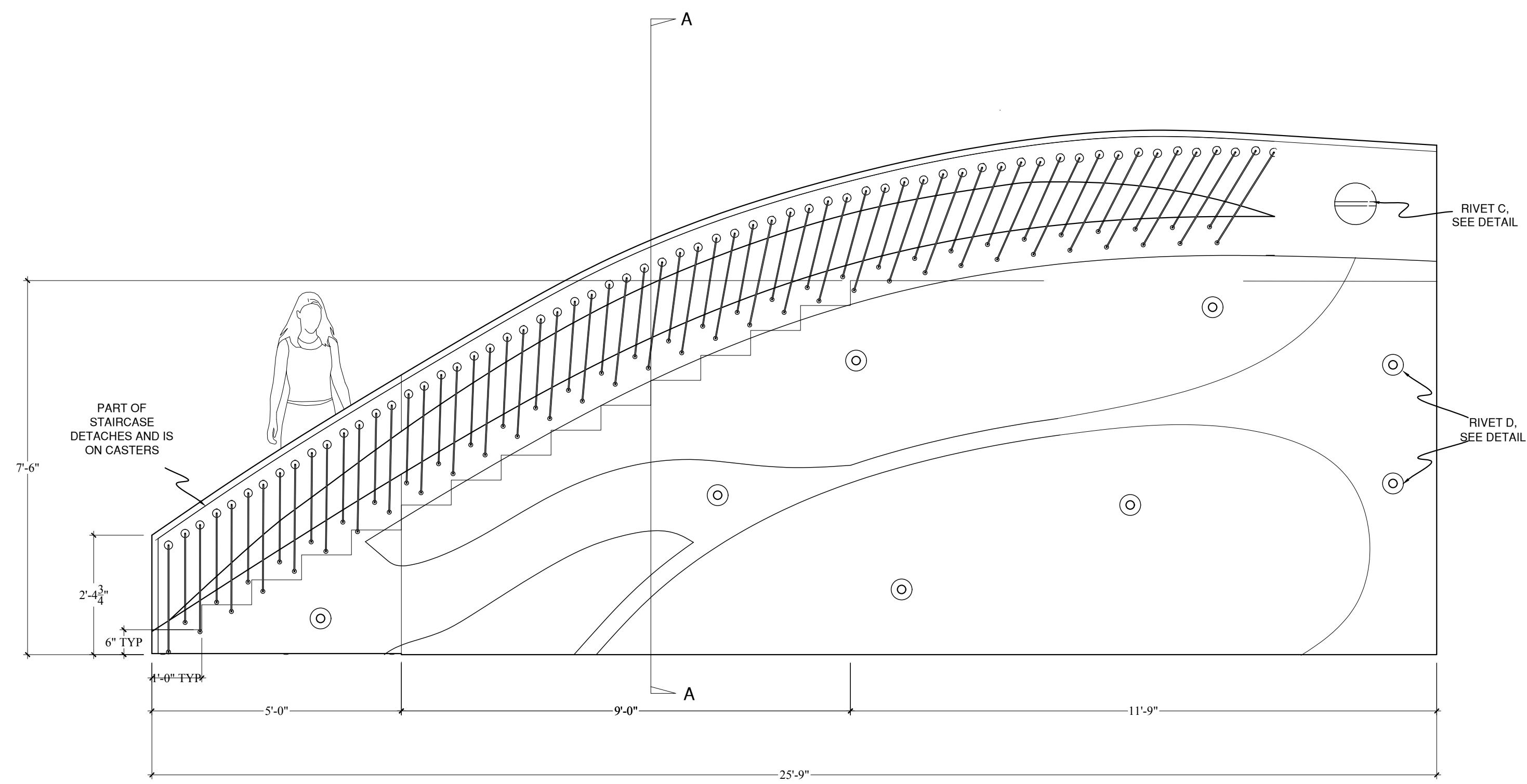
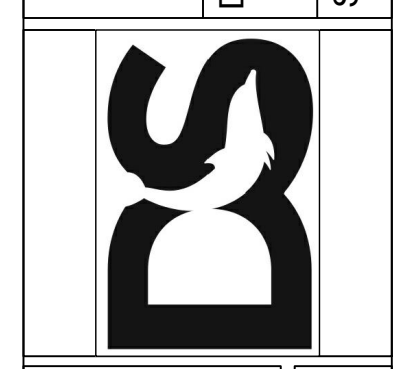
REFERENCE IMAGES

NOTES

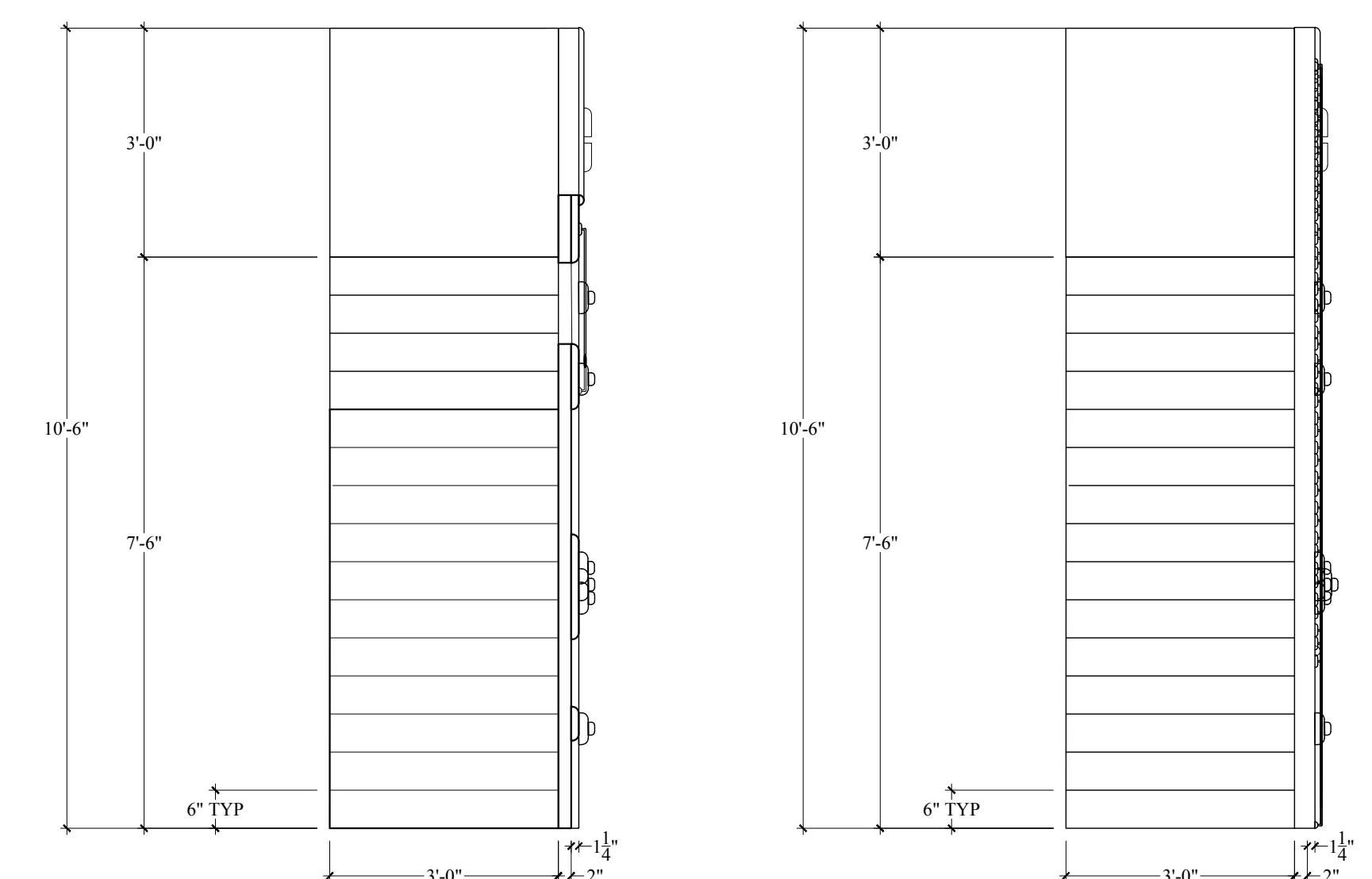
- PORTAL IS INTENDED TO LOOK LIKE A SCALED UP VERSION OF THE INNER WORKINGS OF A PIANO, AND ALSO EVOKE EARLY 1900S INDUSTRIAL ARCHITECTURE. SEE REFERENCE IMAGES
- PORTAL IS DEADHUNG TO LINESET AND IS STATIONARY THROUGHOUT SHOW
- SEE RIVET DETAILS
- DIAGONAL LINES ARE 1" DOWELS, AS NOTED
- SMOOTH FINISH THROUGHOUT WITH COPPER METALLIC PAINT TREATMENT

PLATE:	4	OF 9
DRAWING:	RAGTIME	
ELEVATIONS:	PORTAL B	
SCALE:	1/2" = 1'-0", UNLESS OTHERWISE NOTED	
DATE:	1/1/18	
SCENE DESIGNER:	JESSIE BALDINGER	
DIRECTED BY:	MAGGIE MONAHAN	
THE DOLPHIN SHOW		



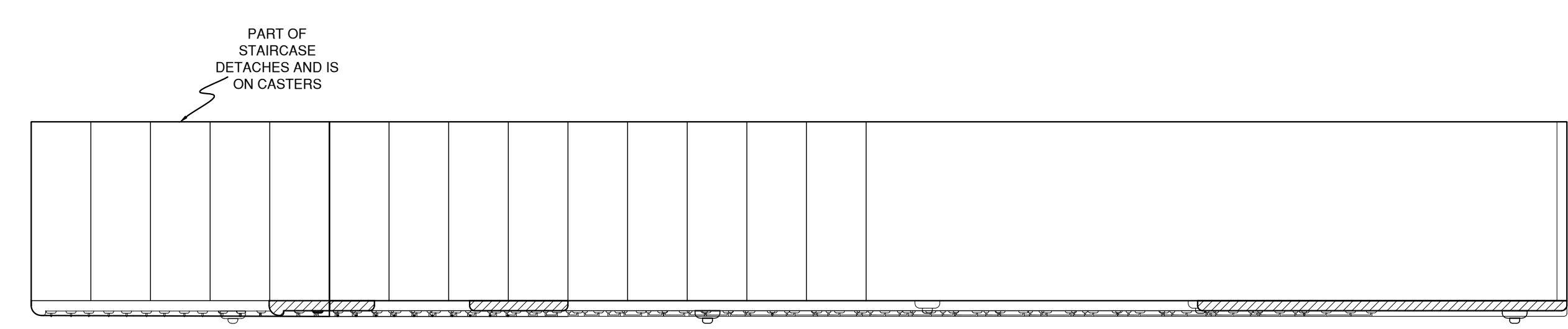


FRONT VIEW

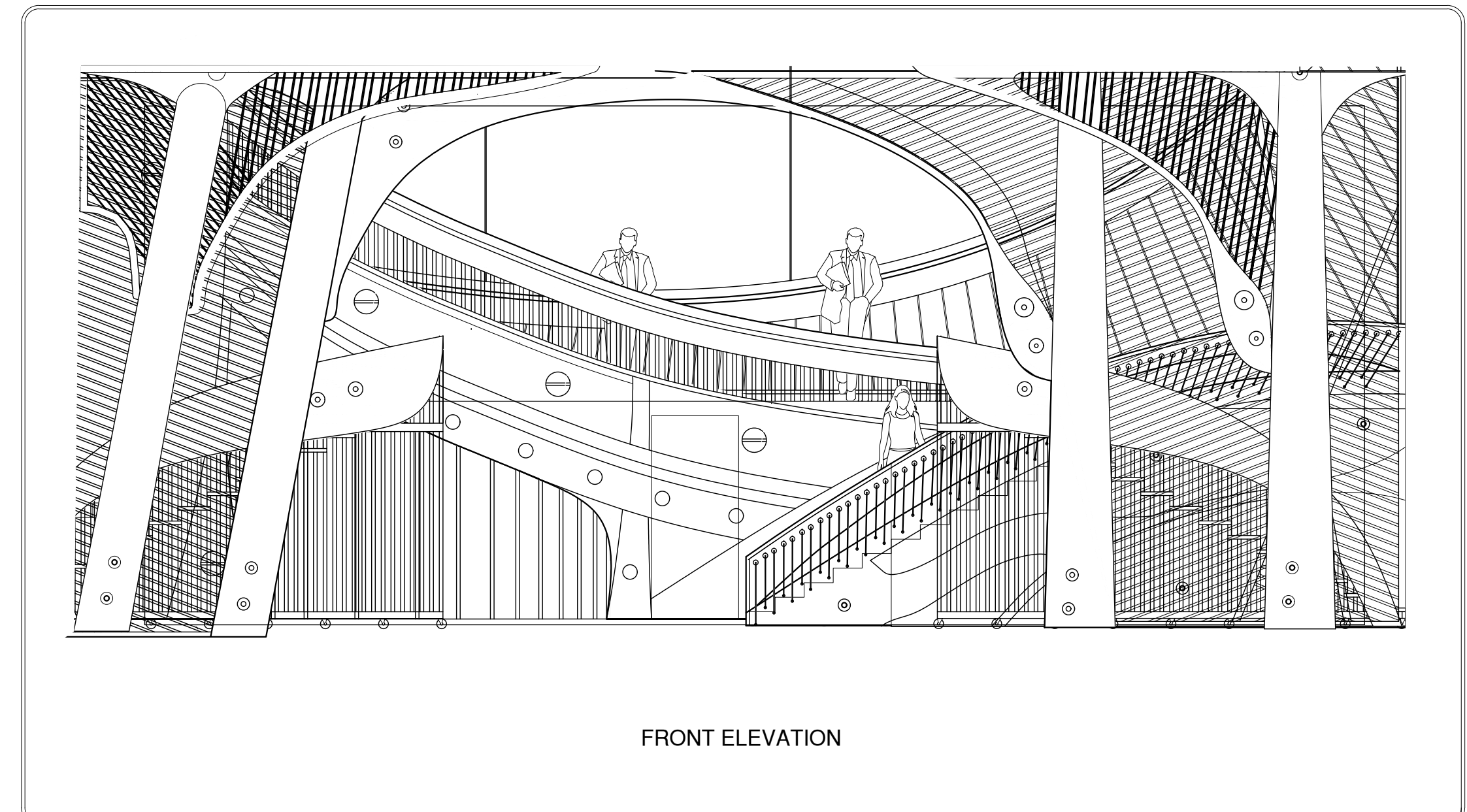


A-A SECTION VIEW

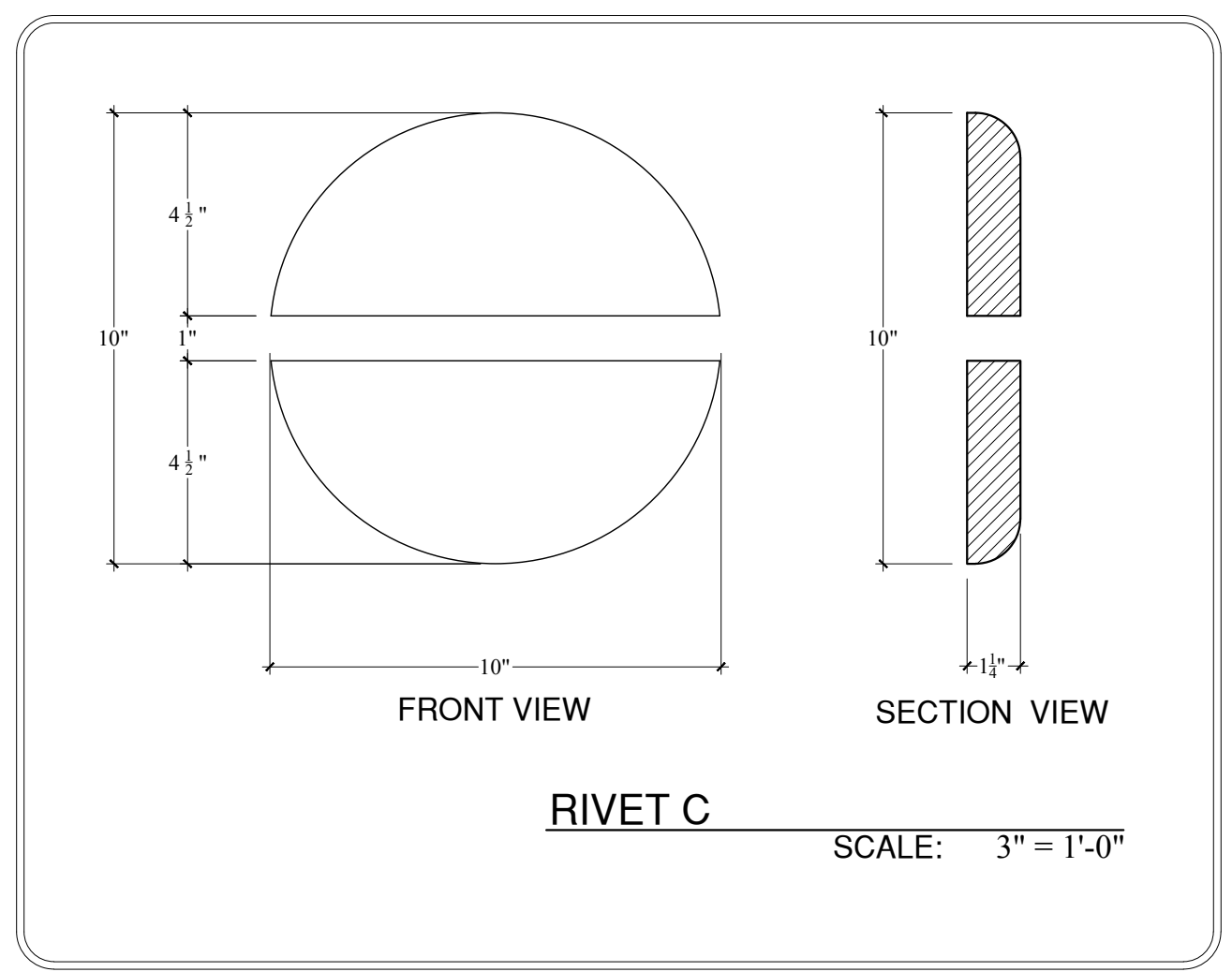
SIDE VIEW



PLAN VIEW

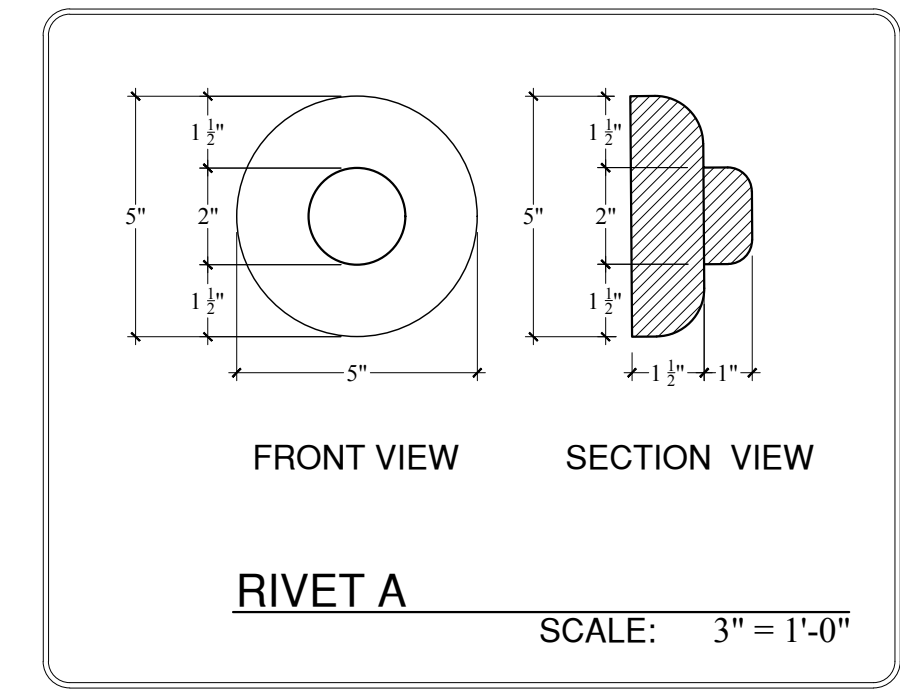


FRONT ELEVATION



RIVET C

SCALE: 3" = 1'-0"

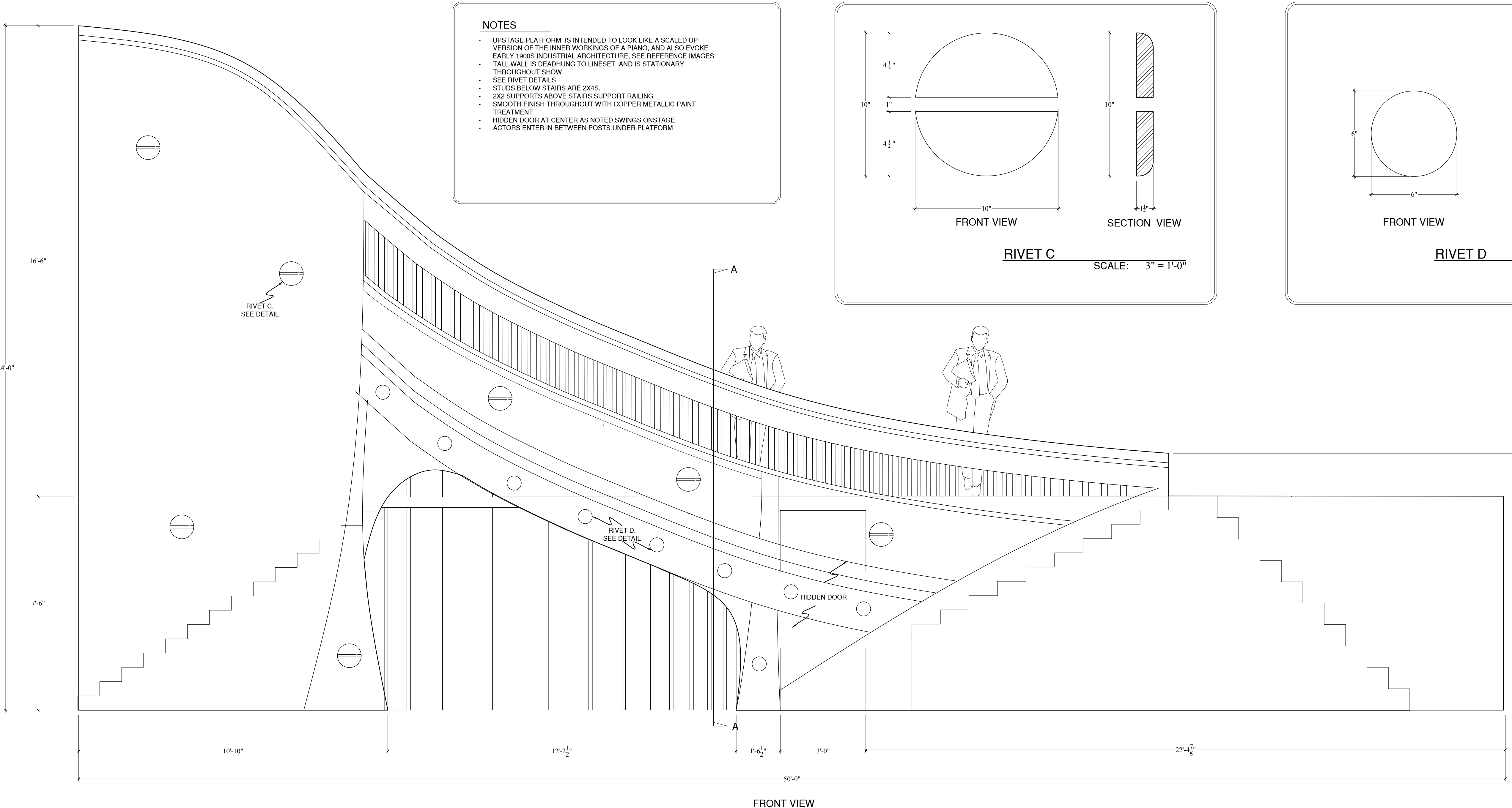


RIVET A

SCALE: 3" = 1'-0"

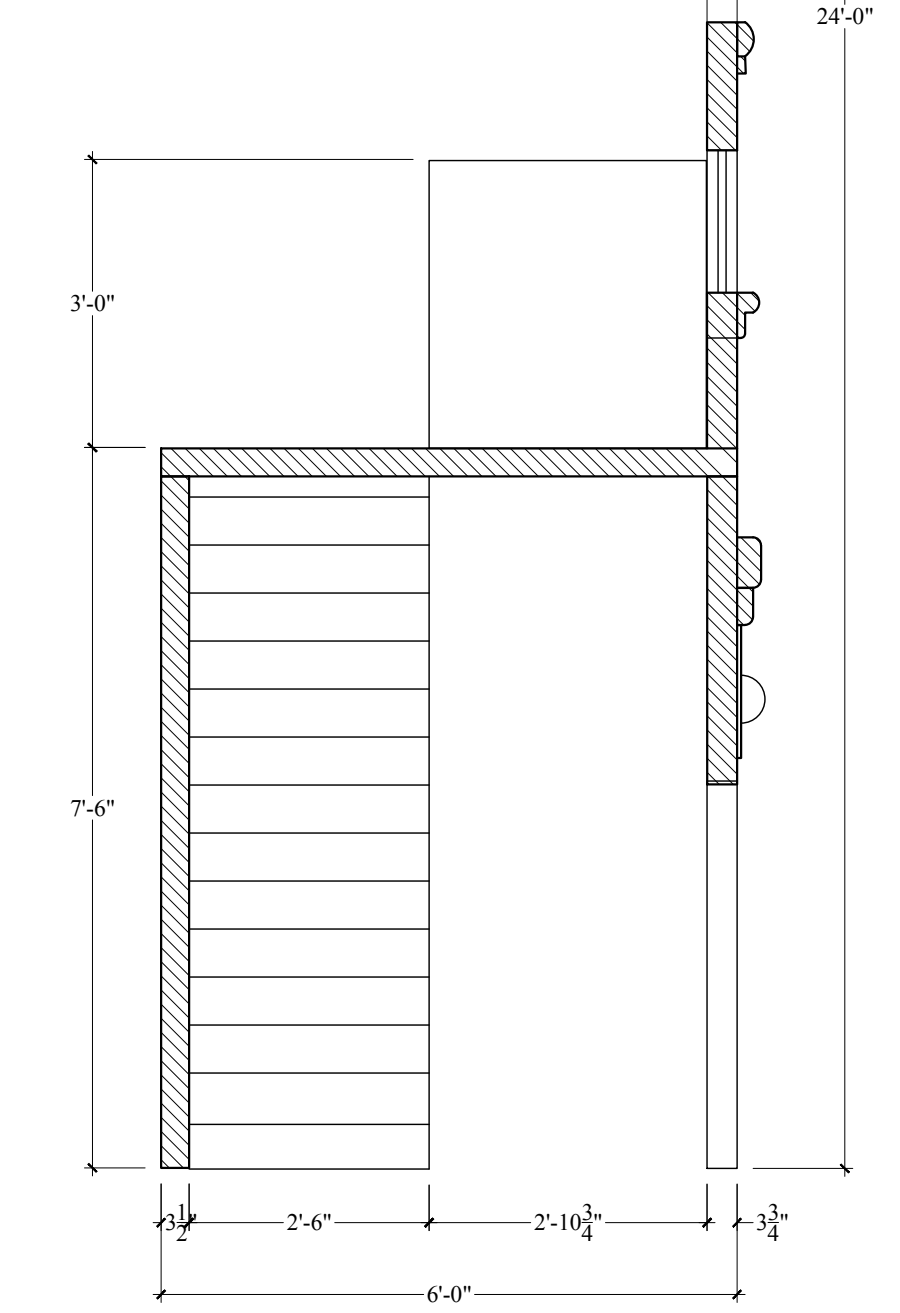
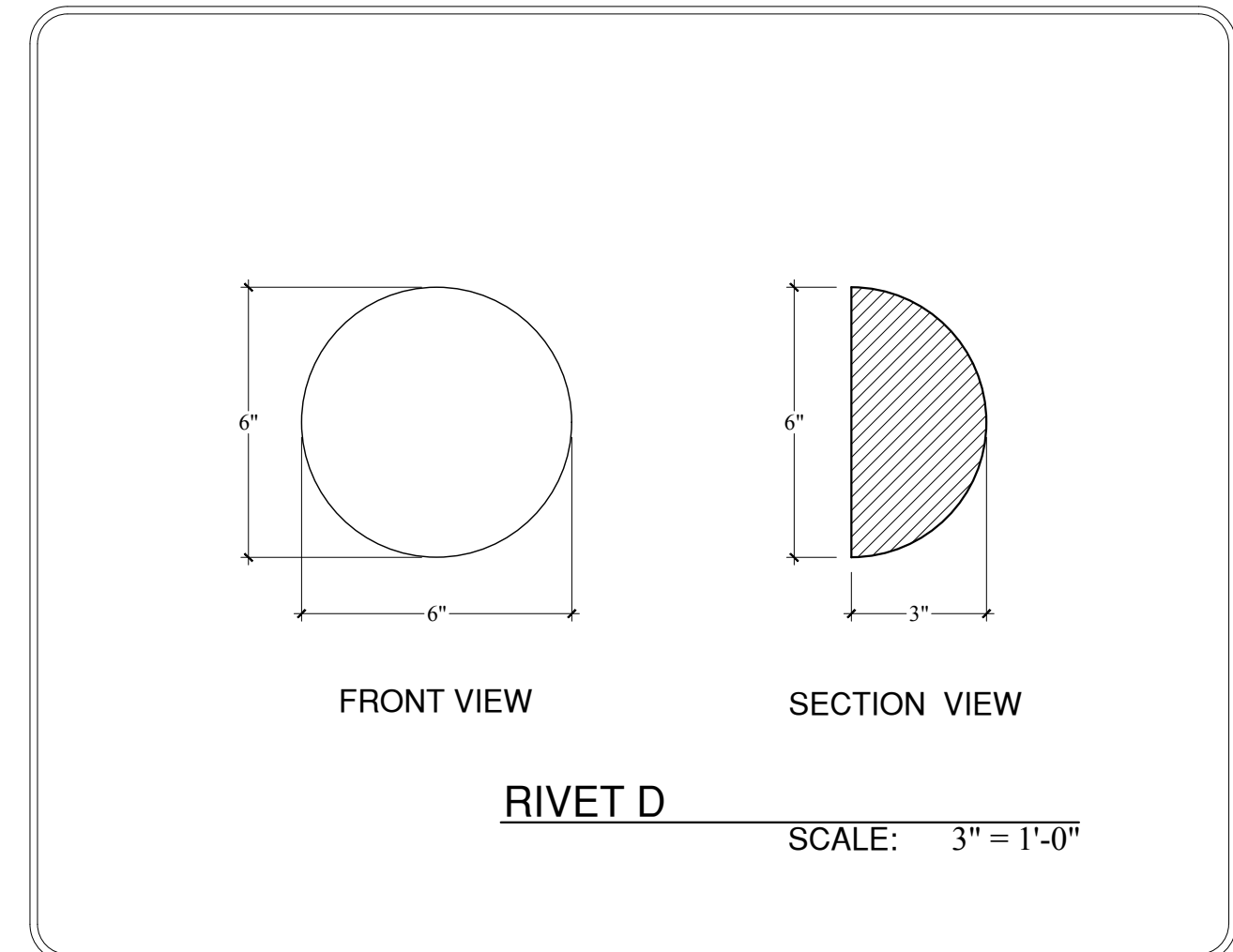
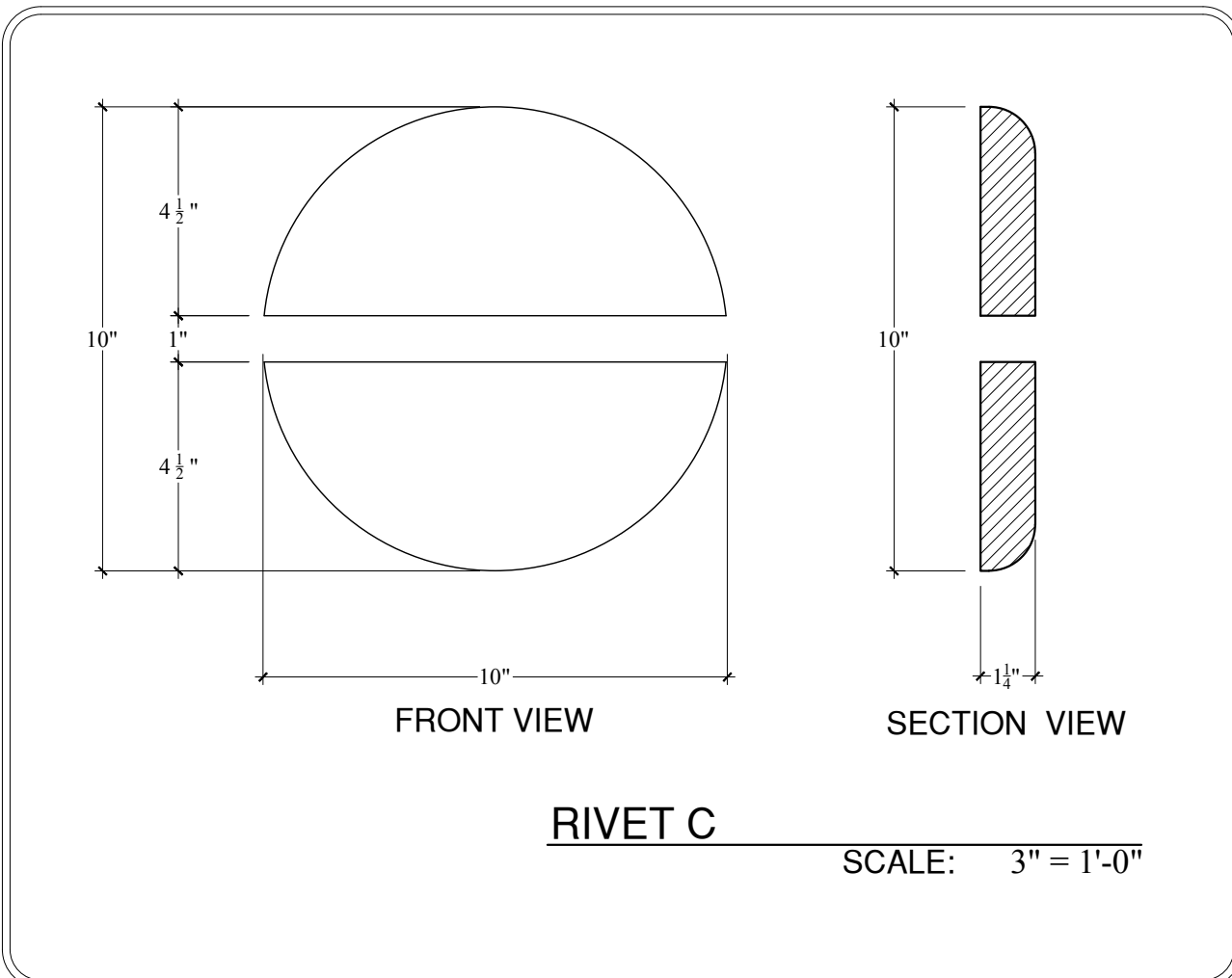
NOTES
 UPSTAGE STAIRCASE IS INTENDED TO LOOK LIKE A SCALED UP VERSION OF THE INNER WORKINGS OF A PIANO, AND ALSO EVOKE EARLY 1900S INDUSTRIAL ARCHITECTURE. SEE REFERENCE IMAGES.
 TALL WALL IS DEADENING TO LINESSET AND IS STATIONARY THROUGHOUT SHOW. SEE RIVET DETAILS.
 1" DOWEL SUPPORTS ABOVE STAIRS SUPPORT RAILING. SMOOTH FINISH THROUGHOUT WITH COPPER METALLIC PAINT TREATMENT.
 BOTTOM 5 STEPS DETACH FROM THE REST OF THE STAIRCASE AND ROLLS AROUND FREELY, GRIPPED BY ACTORS. THE REST OF THE STAIRCASE IS STATIONARY THROUGHOUT SHOW, ATTACHED TO UPSTAGE PLATFORM.

UPSTAGE STAIRCASE
 SCALE: 1/2" = 1'-0"



NOTES

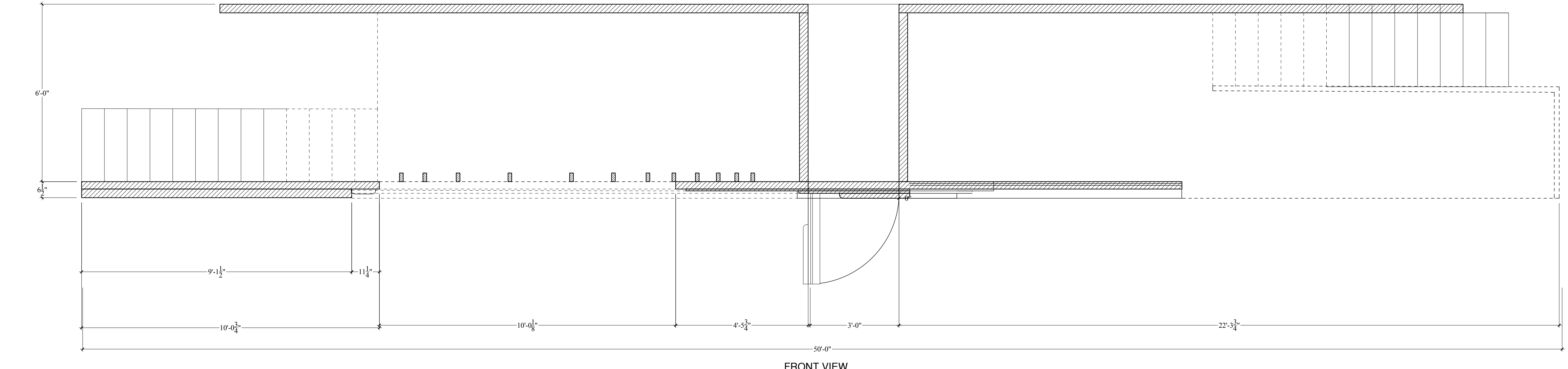
- UPSTAGE PLATFORM IS INTENDED TO LOOK LIKE A SCALED UP VERSION OF THE INNER WORKINGS OF A PIANO, AND ALSO EVOKE EARLY 1900S INDUSTRIAL ARCHITECTURE. SEE REFERENCE IMAGES
- TALL WALL IS DEADHUNG TO LINESET AND IS STATIONARY THROUGHOUT SHOW
- SEE RIVET DETAILS
- STUDS BELOW STAIRS ARE 2X4S
- 2X2 SUPPORTS ABOVE STAIRS SUPPORT RAILING
- SMOOTH FINISH THROUGHOUT WITH COPPER METALLIC PAINT TREATMENT
- HIDDEN DOOR AT CENTER AS NOTED SWINGS ONSTAGE
- ACTORS ENTER IN BETWEEN POSTS UNDER PLATFORM



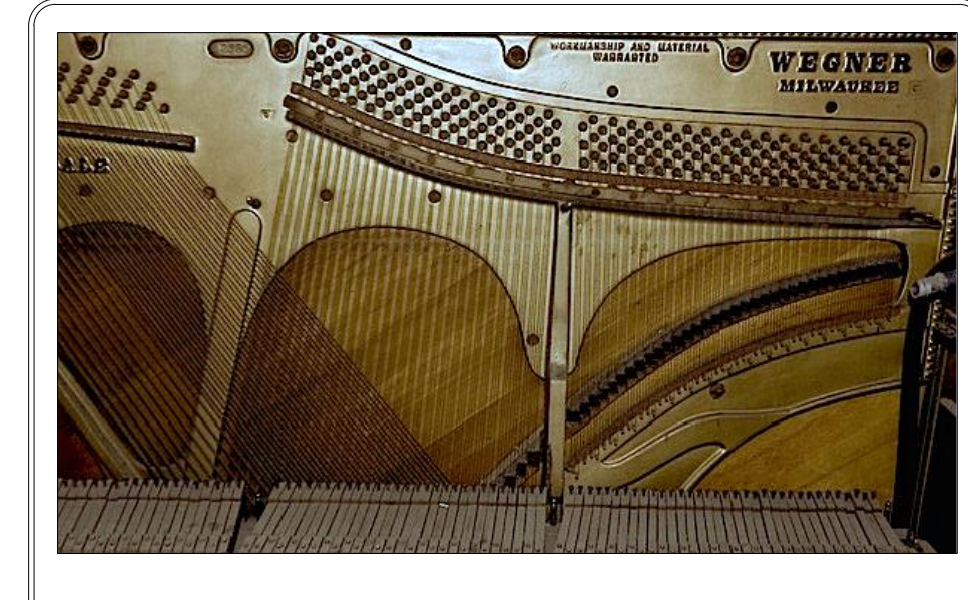
FRONT VIEW

A-A SECTION VIEW

UPSTAGE PLATFORM
SCALE: 1/2" = 1'-0"



FRONT VIEW



REFERENCE IMAGE

PLATE: **6** OF 9

RAGTIME

DRAWING: **ELEVATIONS: UPSTAGE PLATFORM**

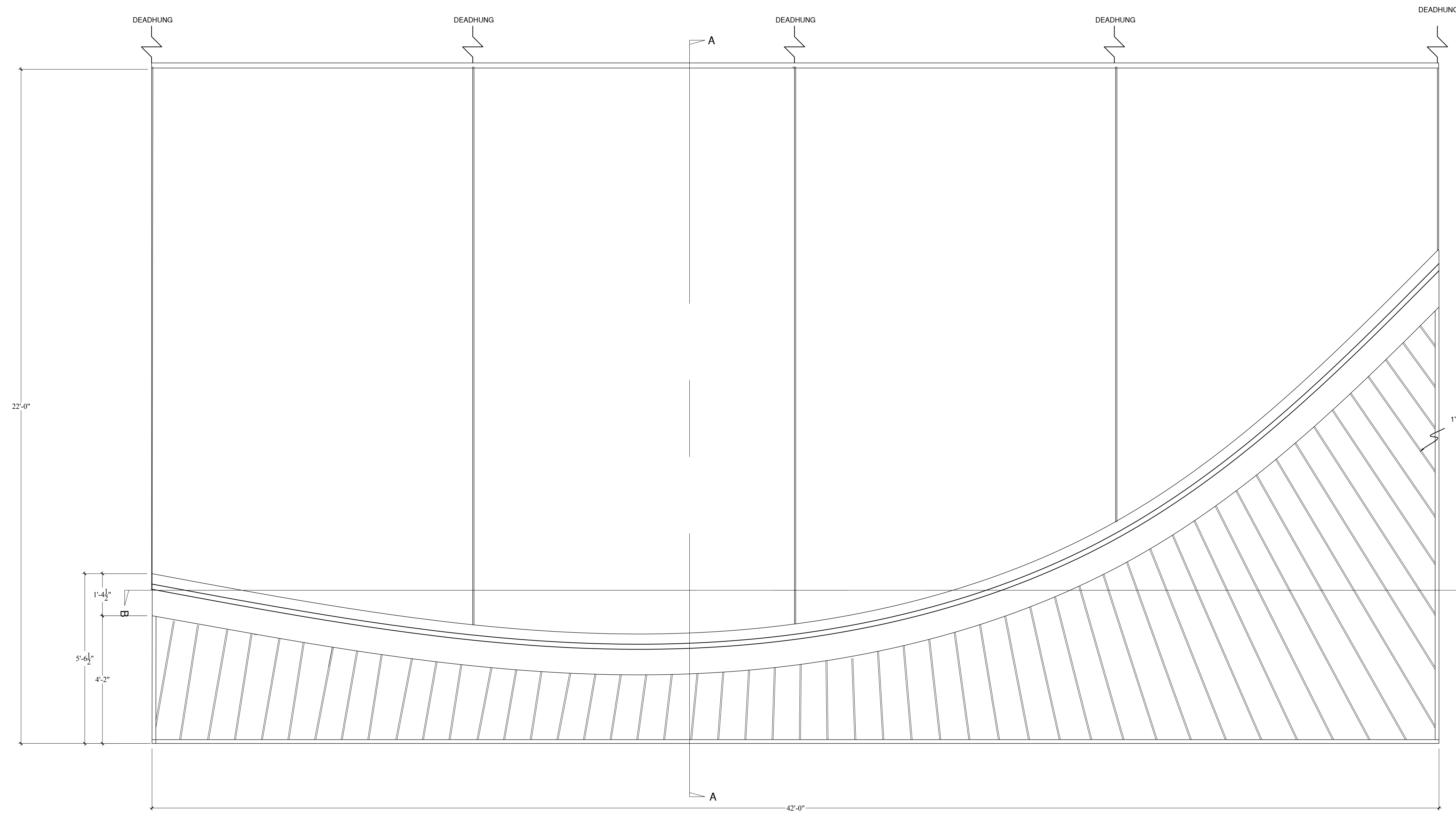
SCALE: 1/2" = 1'-0", UNLESS OTHERWISE NOTED

DATE: 1/1/18

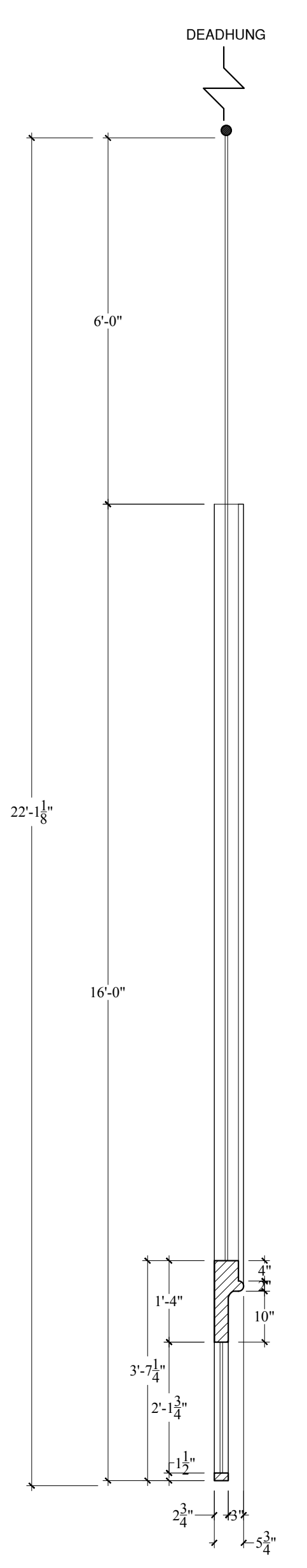
SCENE DESIGNER: **JESSIE BALDINGER**

DIRECTED BY: **MAGGIE MONAHAN**

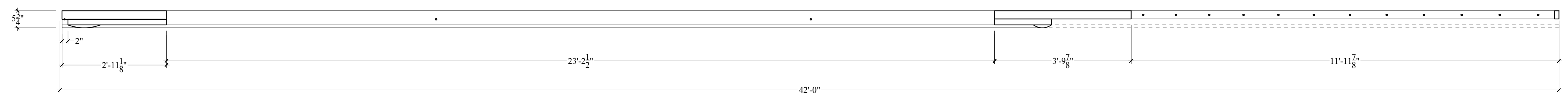
THE DOLPHIN SHOW



FRONT VIEW



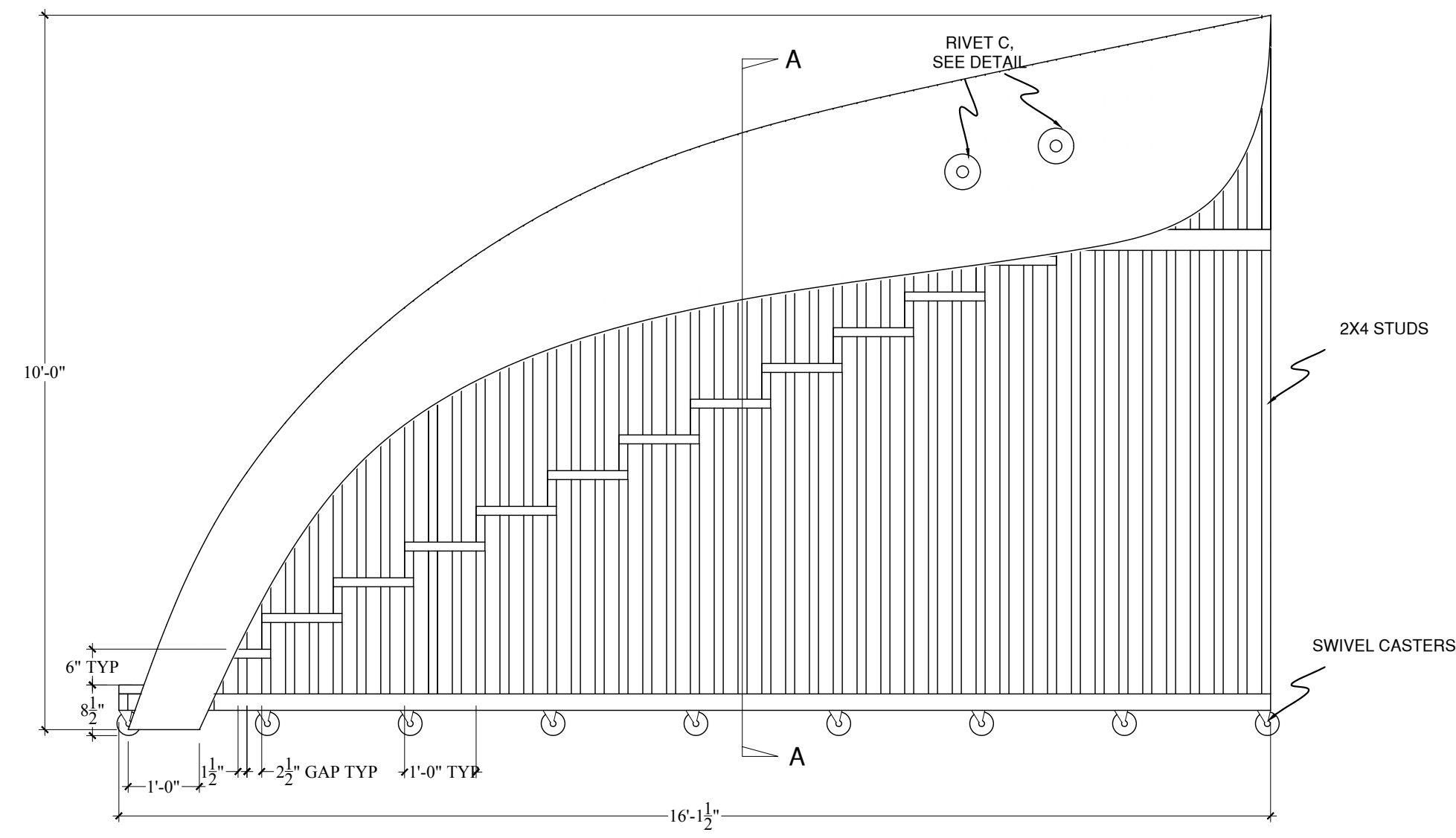
A-A SECTION VIEW



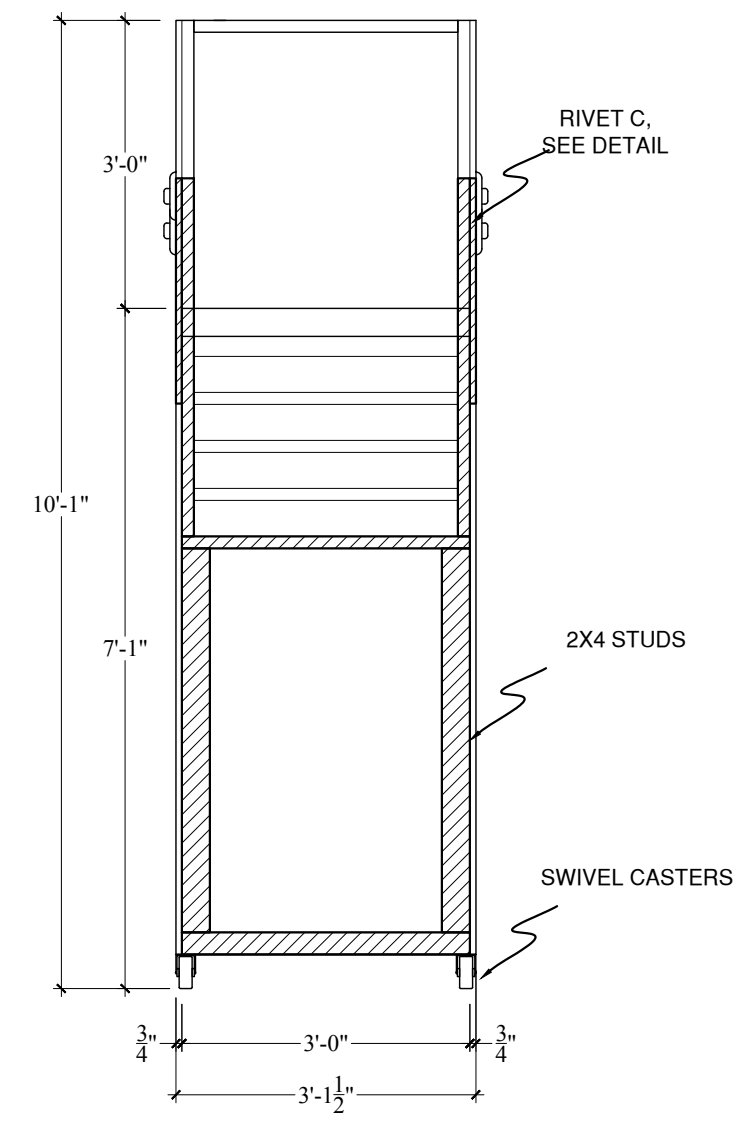
B-B PLAN VIEW

UPSTAGE DROP
SCALE: 1/2" = 1'-0"

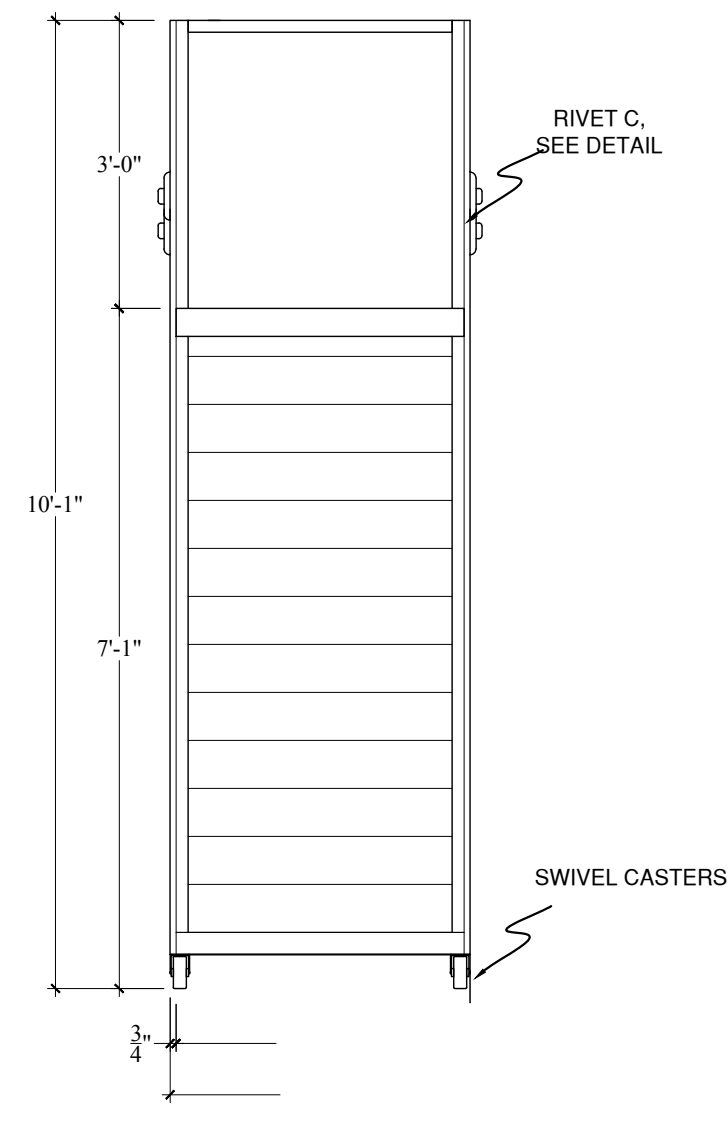
<p>THE DOLPHIN SHOW</p>	<p>SCENE DESIGNER: JESSIE BALDINGER</p>	<p>DS</p>	<p>DRAWING: RAGTIME</p>	<p>PLATE: 7</p>
	<p>DIRECTED BY: MAGGIE MONAHAN</p>		<p>ELEVATIONS: UPSTAGE DROP</p>	<p>DATE: 1/1/18</p>
<p>SCALE: 1/2" = 1'-0", UNLESS OTHERWISE NOTED</p>				



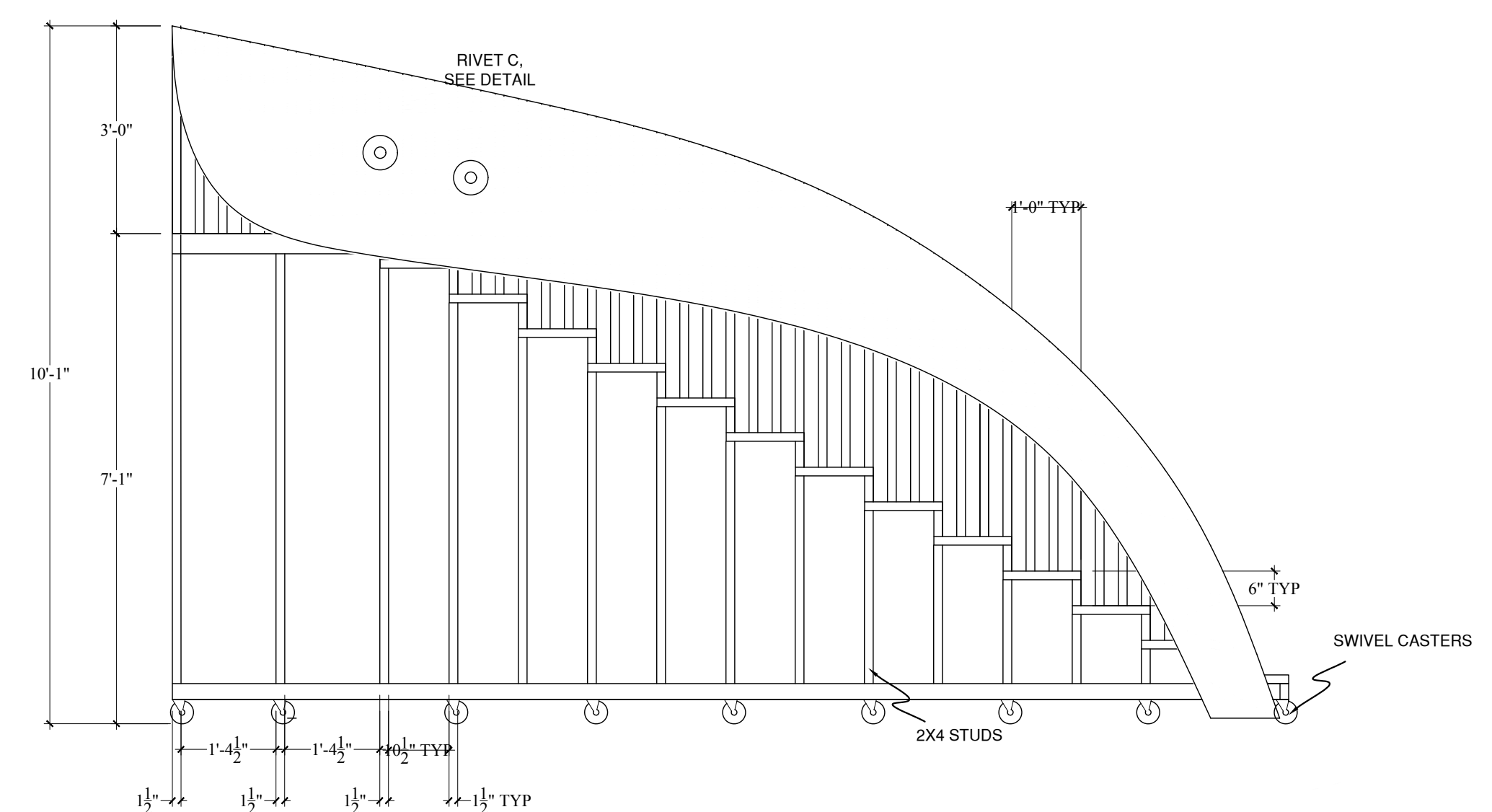
FRONT VIEW



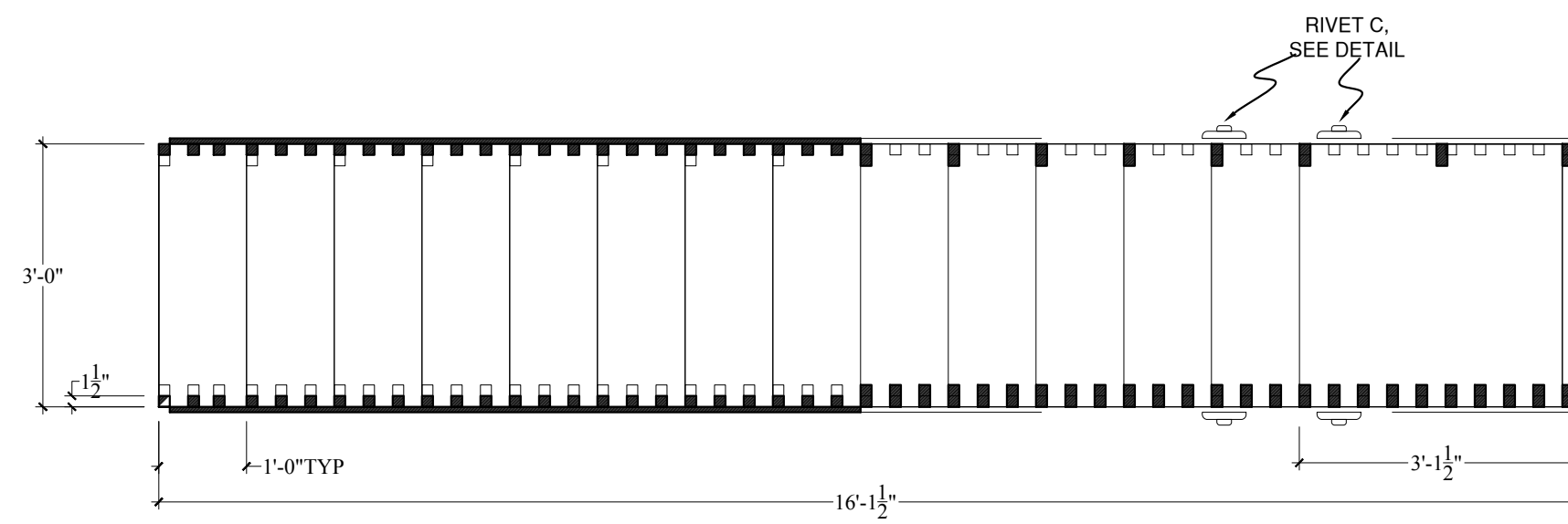
SIDE VIEW



SIDE

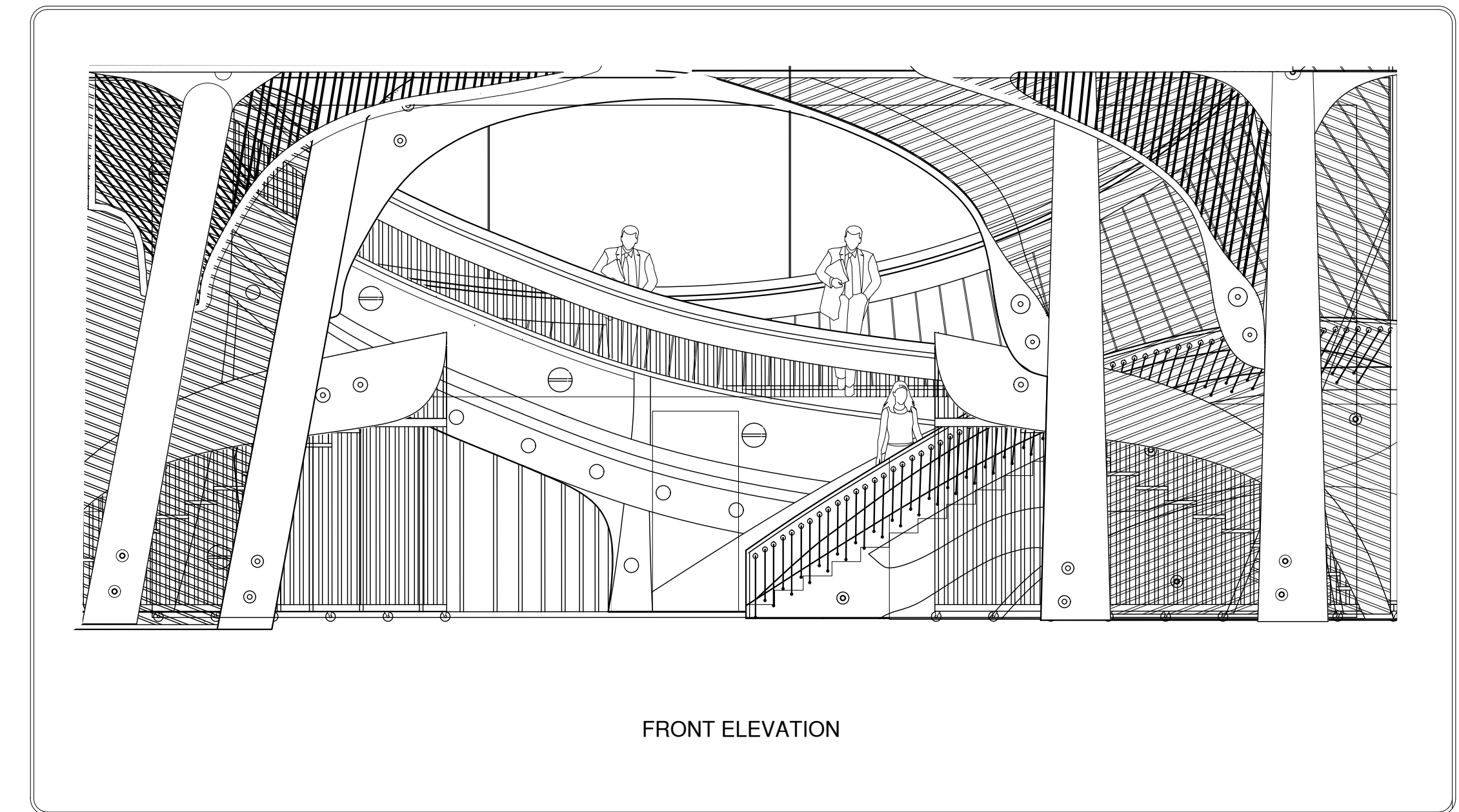


REAR VIEW

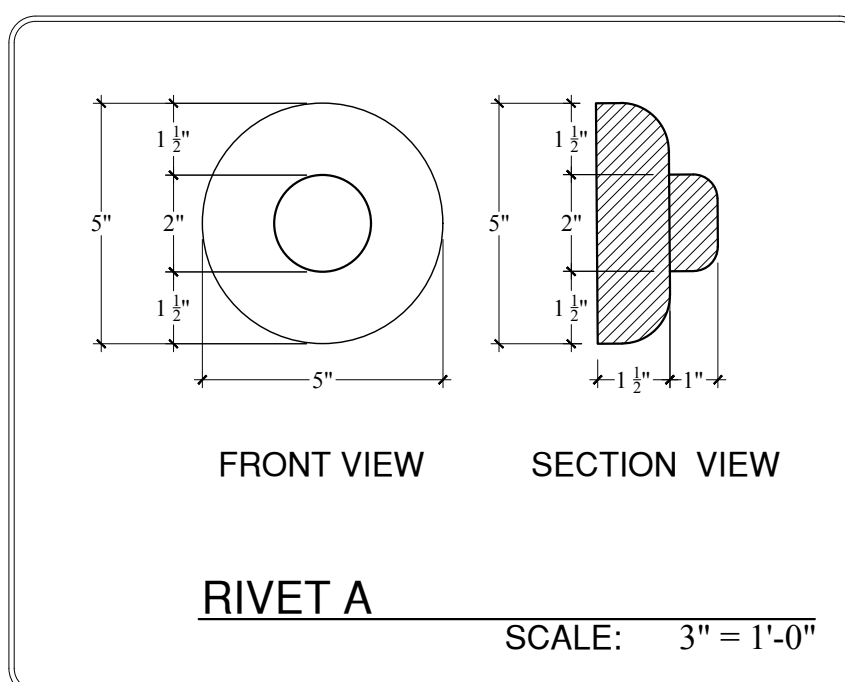


PLAN VIEW

ROLLING STAIRCASE
REV & REP SCALE: 1/2" = 1'-0"

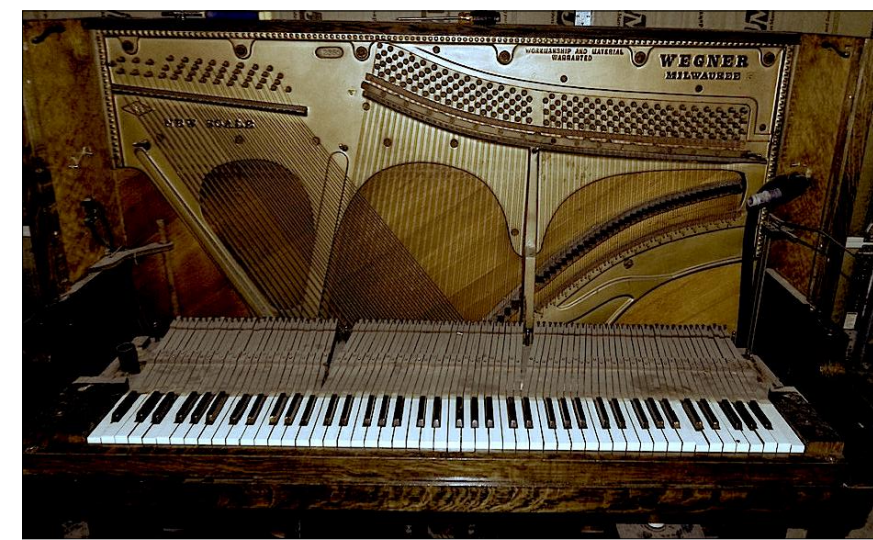


FRONT ELEVATION

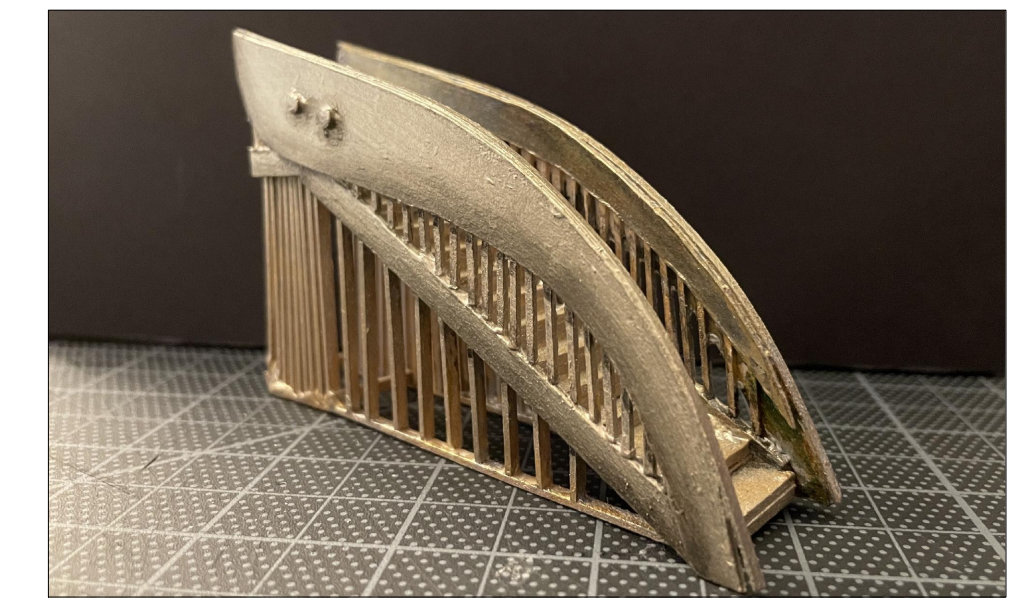


NOTES

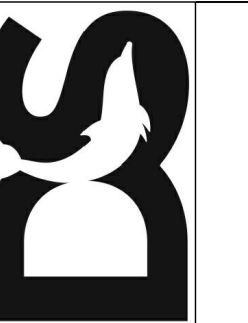
STAIRS ARE INTENDED TO LOOK LIKE A SCALED UP VERSION OF THE INNER WORKINGS OF A PIANO, AND ALSO EVOKE EARLY 1900S INDUSTRIAL ARCHITECTURE. SEE REFERENCE IMAGES. PORTAL IS DEADHUNG TO LINESET AND IS STATIONARY THROUGHOUT SHOW. SEE RIVET DETAILS. STUDS BELOW STAIRS ARE 2X4S. 2X2 SUPPORTS ABOVE STAIRS SUPPORT RAILING. SMOOTH FINISH THROUGHOUT WITH COPPER METALLIC PAINT TREATMENT. STAIRS ARE GRIPPED BY ACTORS AND CREW. CAN MOVE AROUND IN EVERY DIRECTION WITH ACTORS RIDING THEM.

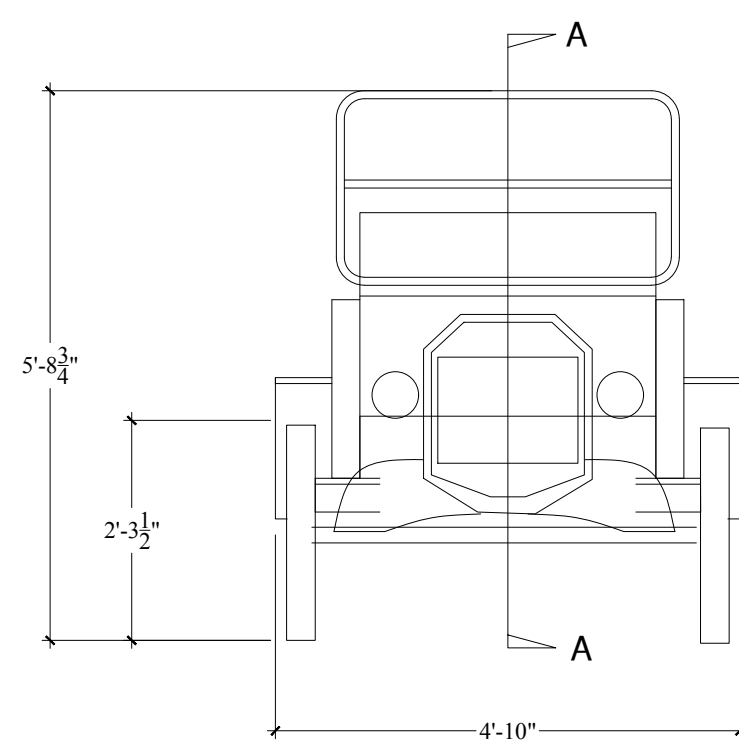


REFERENCE IMAGES

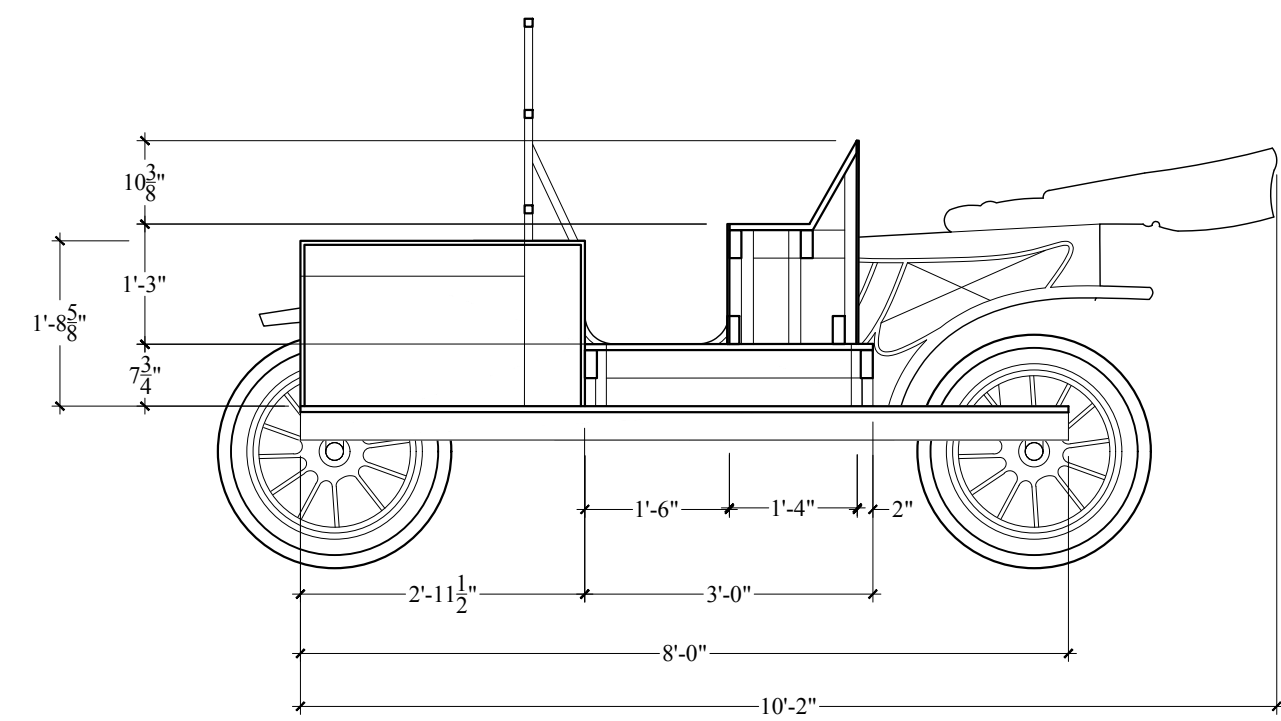


MODEL PHOTO

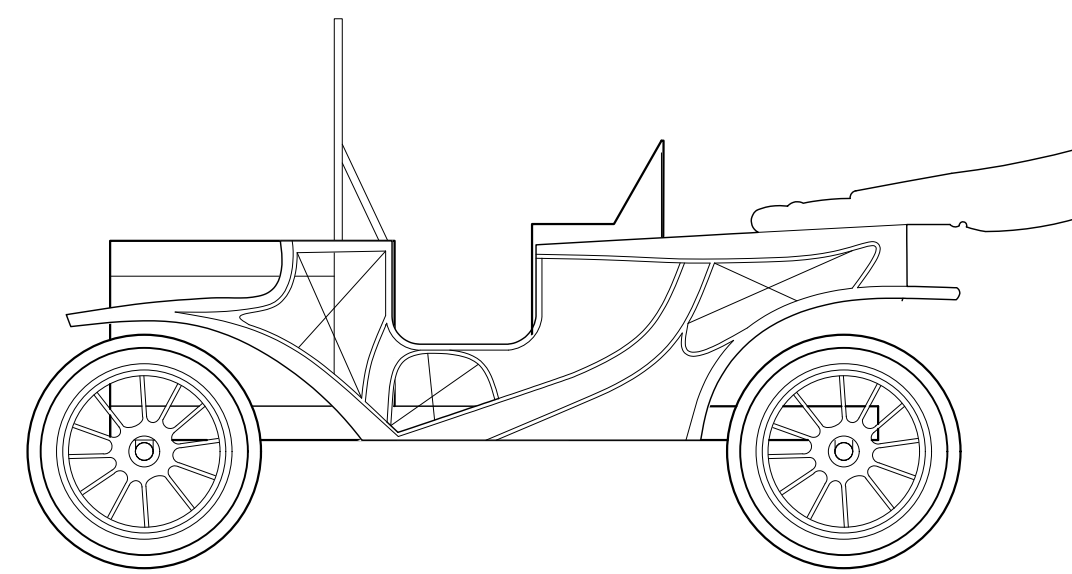




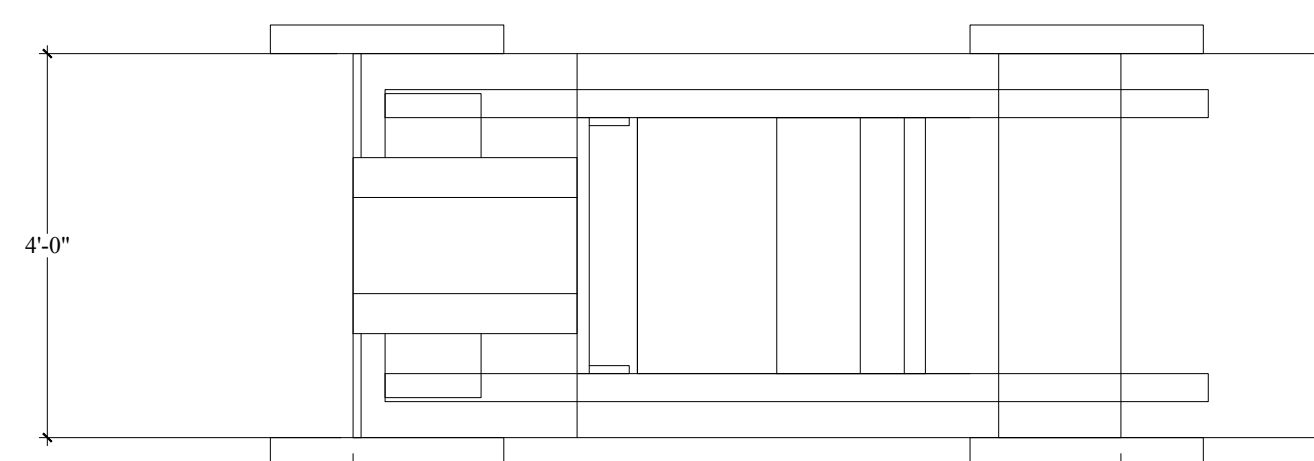
FRONT VIEW



A-A SECTION VIEW



SIDE VIEW



PLAN VIEW

CAR
SCALE: 1/2" = 1'-0"

CAR NOTES

- CAR IS INTENDED TO LOOK LIKE A SCALED UP VERSION OF THE INNER WORKINGS OF A PIANO, AND AN ABSTRACTED MODEL-T CAR
- INDUSTRIAL ARCHITECTURE. SEE MODEL PHOTO
- SMOOTH FINISH THROUGHOUT WITH COPPER METALLIC PAINT TREATMENT
- SEAT MUST ACCOMMODATE TWO ACTORS
- CAR WHEELS TURN
- CAR IS WHEELED ONSTAGE BY ACTORS

CUTOUTS NOTES

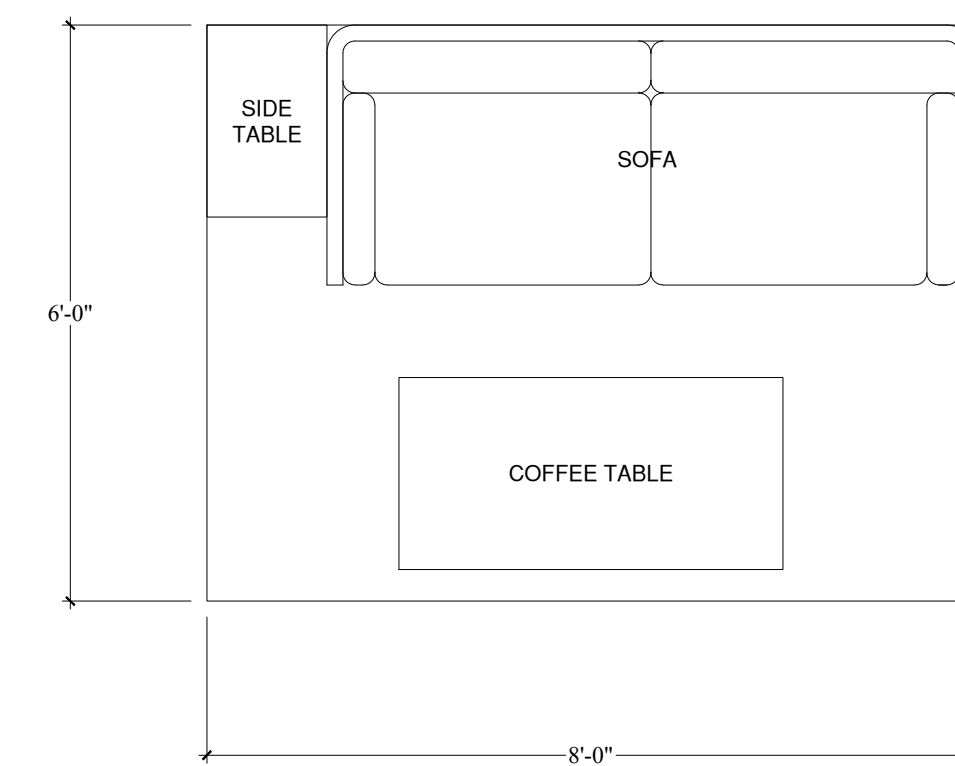
- CUTOUTS ARE INSPIRED BY EARLY 1900'S FILM SETS, USED IN 'ATLANTIC CITY SCENES IN THE SHOW
- CUTOUT OF 3/4" PLY WITH PAINTED GRAPHICS MOON IS RIGGED TO FLY ON LINES
- AWNINGS ARE RIGGED TO FLY ON LINES JUST ABOUT HEAD HEIGHT OF TOP OF STAIRCASES
- WAVES ARE GRIPPED ON BY ACTORS AND SET ON THE GROUND; SEE MODEL PHOTOS
- PAINT TREATMENT SHOULD REFLECT OLD, STYLIZED SCENERY; SEE MODEL PHOTO

WAGONS NOTES

- FURNITURE IS FOUND AND SECURED TO EACH PLATFORM
- PIANO IS NOT PRACTICAL, SHOULD BE ABLE TO BE PLAYED WITHOUT MAKING A SOUND
- FURNITURE WAGON INCLUDES SOFA, SIDE TABLE, COFFEE TABLE, ALL SECURED TO PLATFORM
- PIANO IS SECURED TO PLATFORM, PIANO BENCH IS NOT SECURED TO PLATFORM
- BOTH WAGONS ARE PUSHED ON BY ACTORS, SHOULD BE ON SWIVEL CASTERS

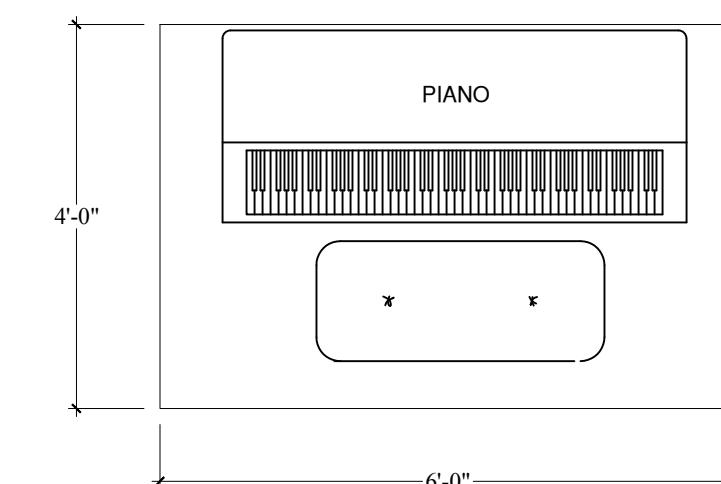


MODEL PHOTO



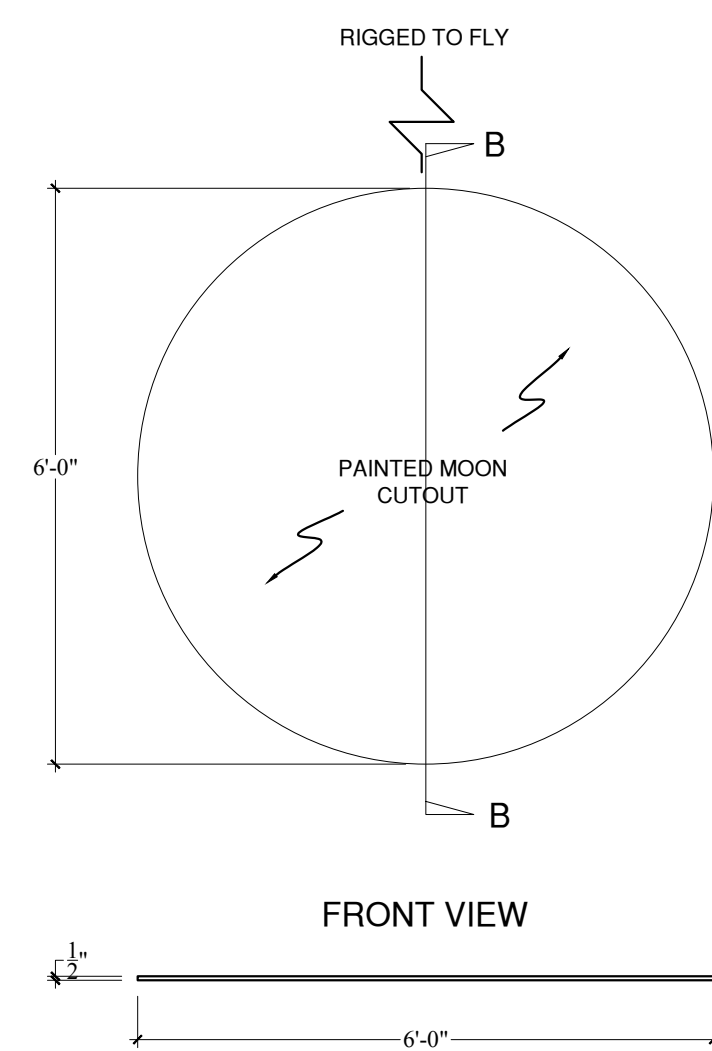
PLAN VIEW

FURNITURE WAGON
SCALE: 1/2" = 1'-0"



PLAN VIEW

PIANO WAGON
SCALE: 1/2" = 1'-0"

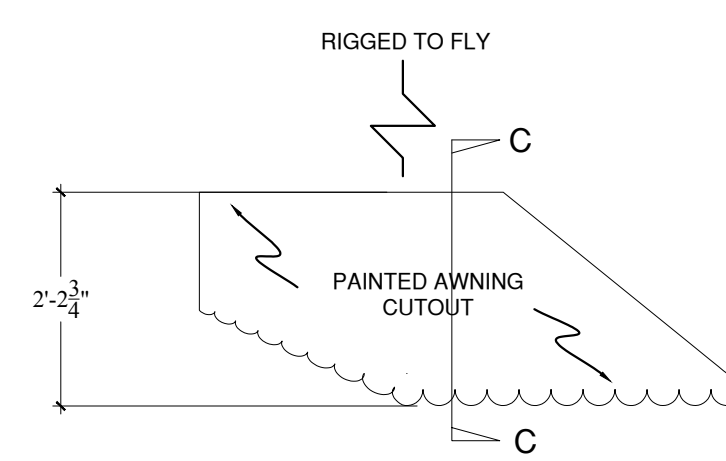


FRONT VIEW

B-B SECTION VIEW

PLAN VIEW

MOON CUTOUT
SCALE: 1/2" = 1'-0"



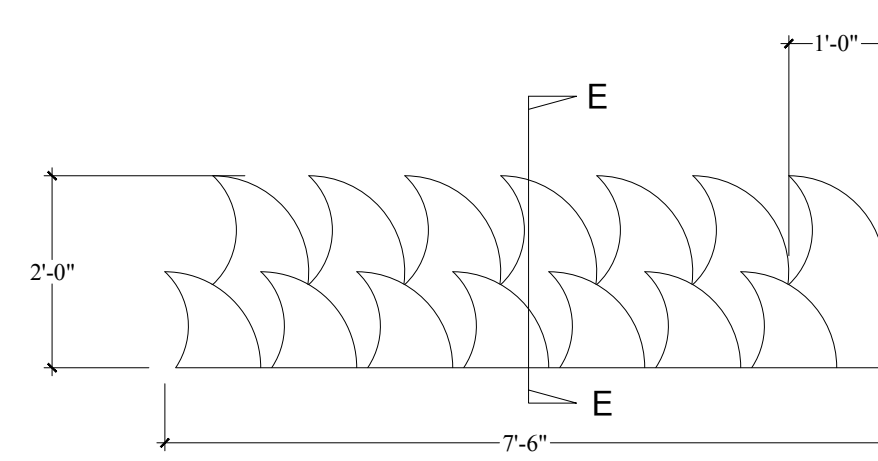
FRONT VIEW

C-C SECTION VIEW

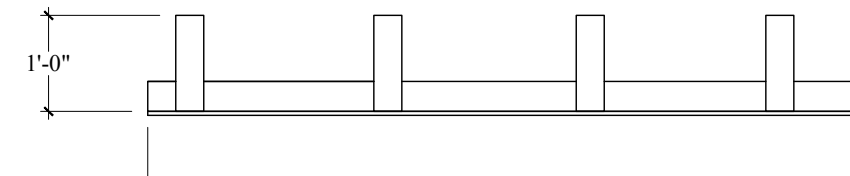


PLAN VIEW

AWNING CUTOUT
REV & REP SCALE: 1/2" = 1'-0"

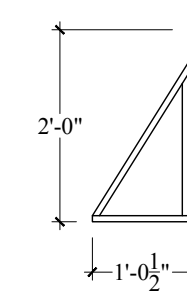


FRONT VIEW

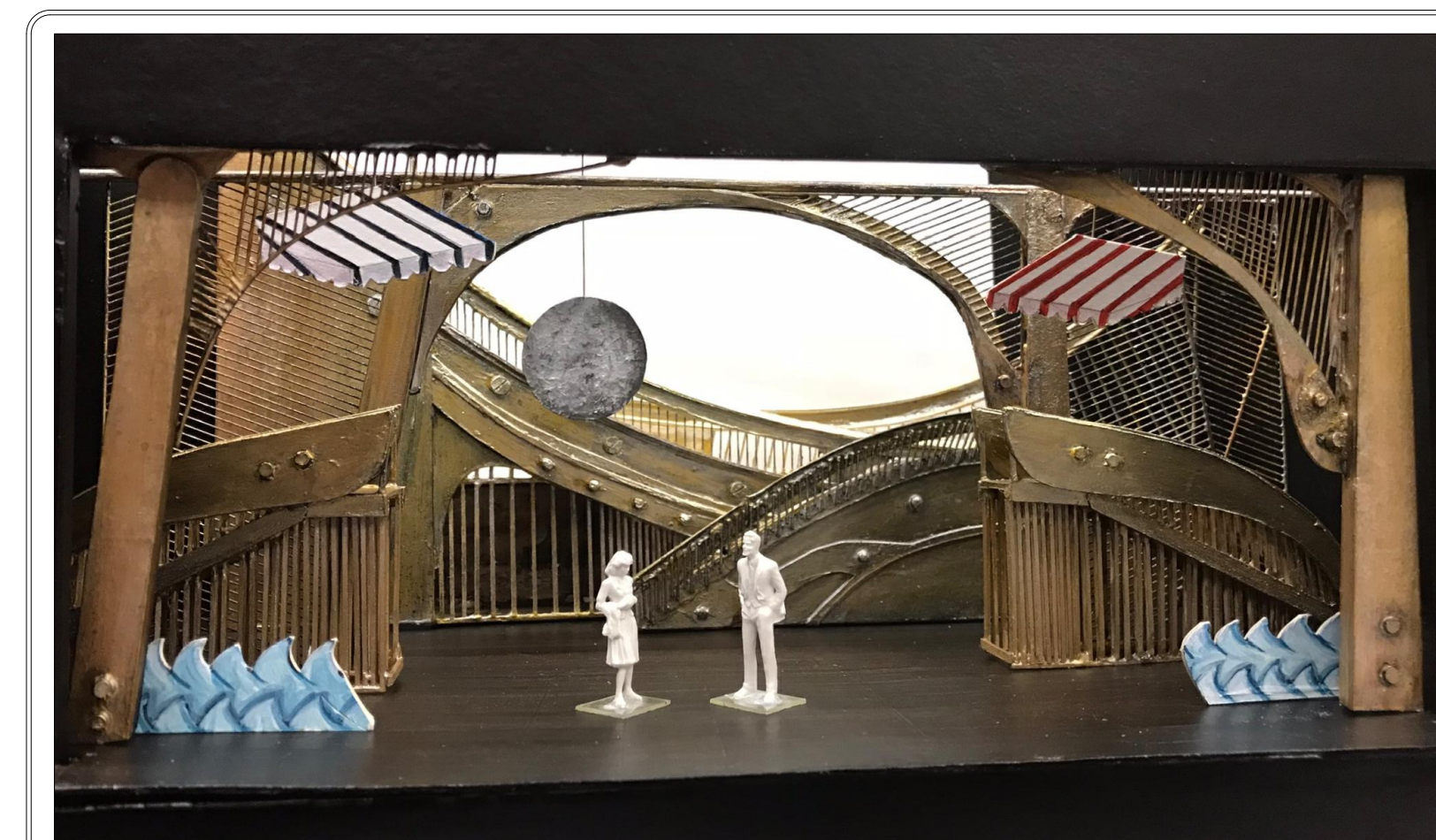


PLAN VIEW

STAGE LEFT WAVE CUTOUTS
REV & REP SCALE: 1/2" = 1'-0"



C-C SECTION VIEW



MODEL PHOTO

SCENE DESIGNER:
JESSIE BALDINGER

DIRECTED BY: MAGGIE MONAHAN

THE
DOLPHIN
SHOW

RAGTIME

DRAWING: PROPS

SCALE: 1/2" = 1'-0", UNLESS OTHERWISE NOTED

PLATE:

9

OF 9

DATE: 1/1/18