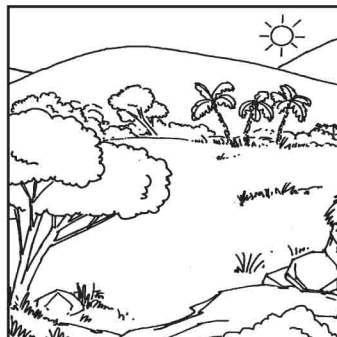
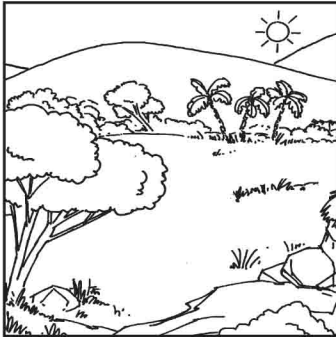


David gave all that belonged to Saul's family to Mephibosheth.

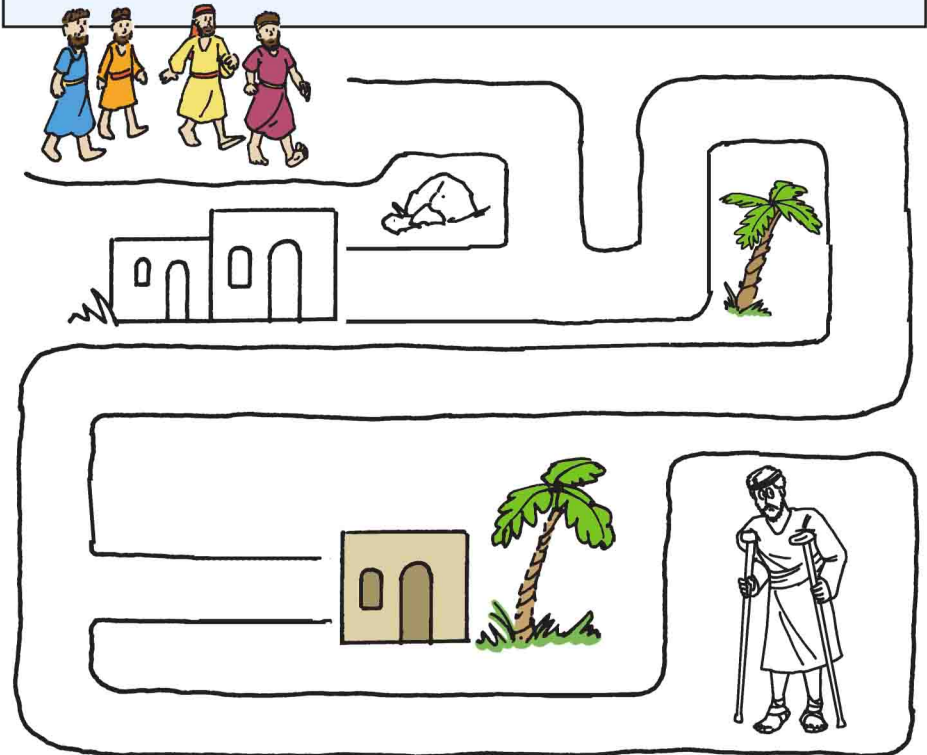
Match the pictures.



David Is Kind to Mephibosheth

David asked, "Who is left from Saul's family? I want to be kind to that person."

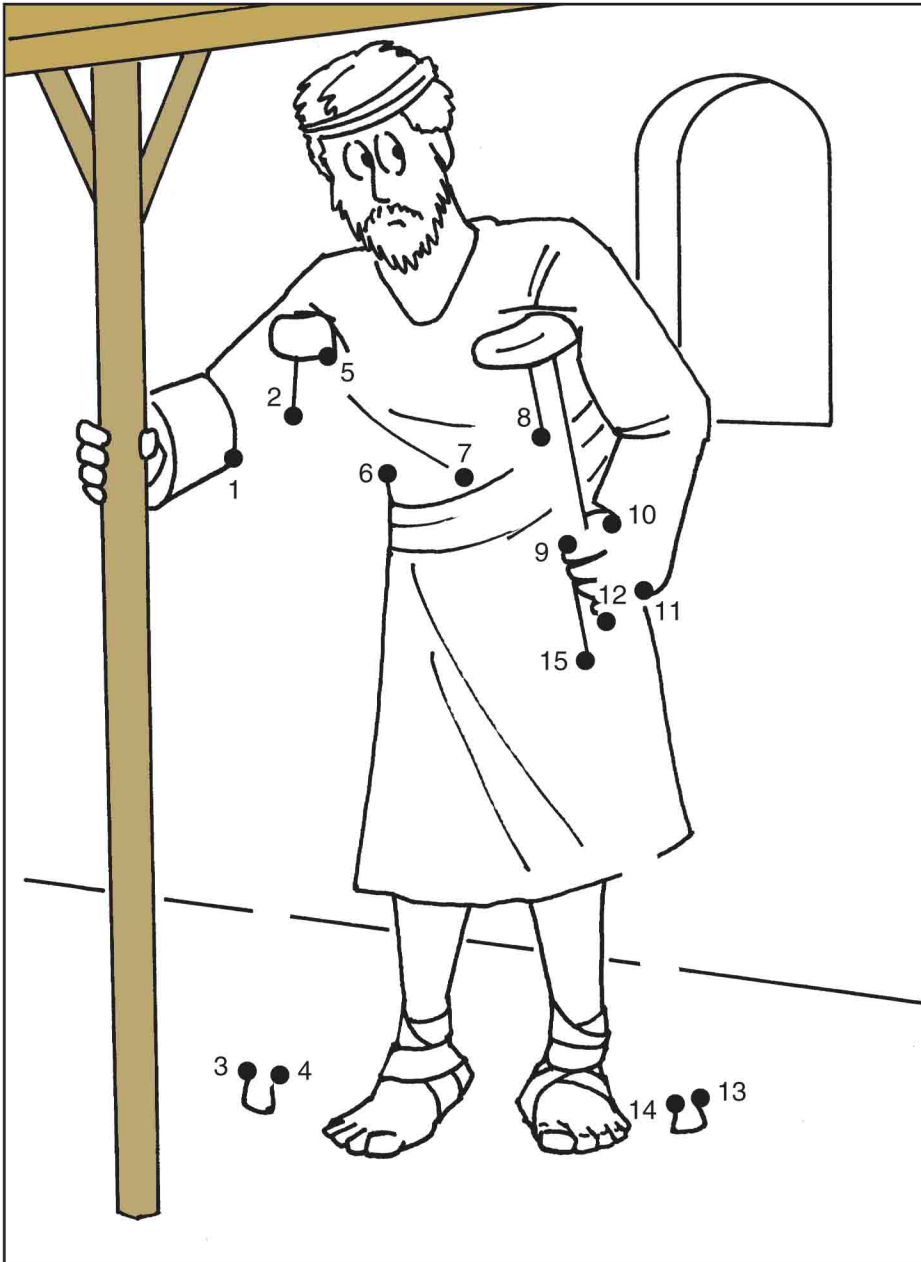
Follow the maze.



Jonathan's son Mephibosheth was still alive. He was crippled in both feet.

Connect the dots.

1 2 3 4 5 6 7 8 9 10 11 12 13 14 15



David sent for Mephibosheth.

Use the code to fill in the missing vowels.

a = ☆ e = ☆☆ i = ☆☆☆

“H__ w__ll
☆☆ ☆☆☆

__ t __ t
☆☆ ☆ ☆

th__ k__ng's
☆☆ ☆☆☆

t__bl__.”
☆ ☆☆☆