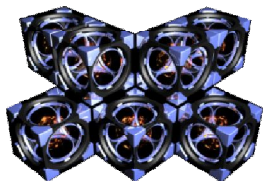


DJ LED Video Booth

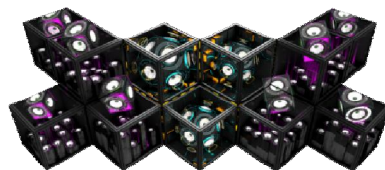
Rock Your Imagination!



Tri -1



Tri -2



Tri -3



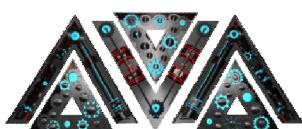
Tri -4



Tri -5



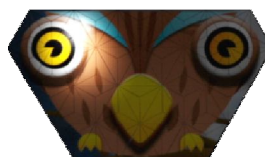
Tri -6



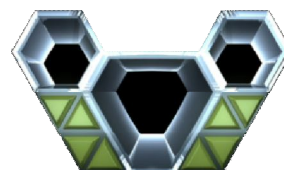
Tri -7



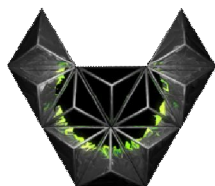
Tri -8



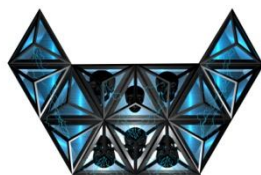
Tri -9



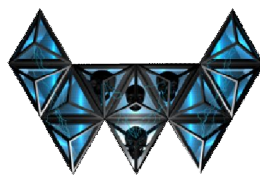
Tri -10



Tri -11



Tri -12



Tri -13



Tri -14

Specifications

Item	Equilateral triangle LED		Isosceles triangle LED	
Model	P5 – ET-S	P5 – ET-B	P5 – IT-S	P5 – IT-B
Size(mm)	Length of side: 190 Height: 165	Length of side: 370 Height: 320	Length of side: 370 Height: 185	Length of side: 480 Height: 240
Resolution	37*32	73*64	73*37	96*48
Pixel pitch	5 mm			
LED type	SMD3528			
Brightness	1200 -1500 nits			
IP rating	Indoor only			

Model of LED DJ booth

No.	Item name	Size(mm/feet)	Detail
Tri-1	VD-DJMF-5+2	2430*1400 / 7.97*4.59	P5 160*160 module: 171 pcs; receiving card: 7 pcs, power supply: 19 pcs
Tri-2	VD-DJMF-7+2	3270*1400 / 10.73*4.59	P5 160*160 module: 225 pcs; receiving card: 9 pcs, power supply: 25 pcs
Tri-3	VD-DJMF-9+2	3500*1400 / 11.48*4.59	P5 160*160 module: 297 pcs; receiving card: 11 pcs, power supply: 31 pcs
Tri-4	VD-DJFW-CO	4550*1310 / 14.93*4.3	P5 – ET-S: 78 pcs, P5 – ET-B: 24 pcs; receiving card: 8 pcs, power supply: 8 pcs
Tri-5	VD-DJFW-BO	3991*1340 / 13.1*4.4	P5 – ET-S: 78 pcs, P5 – ET-B: 42 pcs; receiving card: 11 pcs, power supply: 11 pcs
Tri-6	VD-DJFW-AO	4906*1956 / 16.1*6.42	P5 – ET-S: 78 pcs, P5 – ET-B: 54 pcs, receiving card: 13 pcs, power supply: 13 pcs
Tri-7	VD-DJAVA-AO	2520*1074 / 8.27*3.52	P5 – ET-S: 105 pcs; receiving card: 6 pcs, power supply: 8 pcs
Tri-8	VD-DJAVA-BO	3660*1238 / 12*4.06	P5 – ET-S: 197 pcs; receiving card: 11 pcs, power supply: 18 pcs
Tri-9	VD-M-DJMTY-B0	2220*1280 / 7.28*4.2	P5 – ET-B: 38 pcs; receiving card: 6 pcs, power supply: 6 pcs
Tri-10	VD-M-DJMTY-A0	2220*1280 / 7.28*4.2	P5 – IT-B: 33 pcs; receiving card: 6 pcs, power supply: 6 pcs
Tri-11	VD-DJNJ-CO	1440*1225 / 4.72*4.02	P5 – IT-B: 30 pcs; receiving card: 5 pcs, power supply: 5 pcs
Tri-12	VD-DJNJ-AO1	1920*1250 / 6.3*4.1	P5 – IT-B: 42 pcs; receiving card: 7 pcs, power supply: 8 pcs
Tri-13	VD-DJNJ-AO	1920*1250 / 6.3*4.1	P5 – IT-B: 36 pcs; receiving card: 6 pcs, power supply: 6 pcs
Tri-14	VD-DJNJ-BO	2880*1250 / 9.45*4.1	P5 – IT-B: 66 pcs; receiving card: 12 pcs, power supply: 12 pcs