

Indoor COB Touring LED

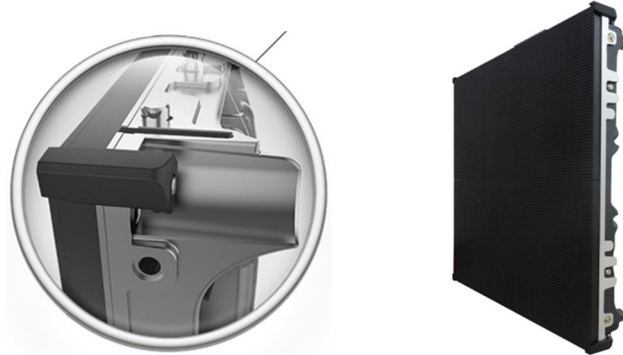


Indoor COB touring LED displays (1.95 mm, 2.6 mm) are transforming the rental and staging markets. Powered by advanced COB technology, they offer a wider viewing angle, lower heat emission, and superior durability—featuring robust resistance to collision, static, oxidation, dust, and moisture. This combination makes them exceptionally easy to install and maintain.

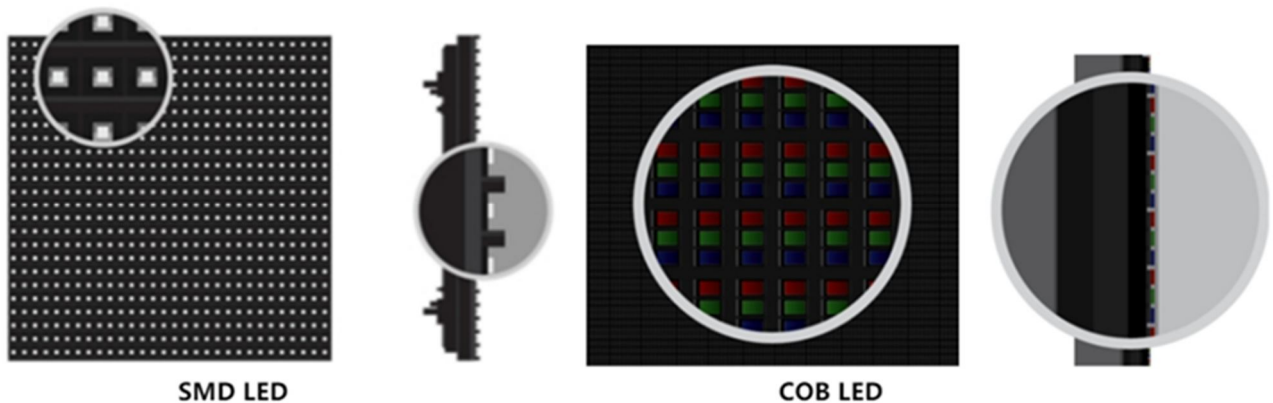
Further enhanced by NovaStar’s A8S-N receiving cards, these displays deliver seamless HDR performance, giving you stunning image quality and a clear competitive advantage in any high-end production.

1. Features

1.1 Anti-collision design



1.2 Built with advanced COB technology, perfect for fast setup and hassle-free maintenance in rental & staging.



1.3 Can be curved



2. Specifications

Model No.	ICTL1.9	ICTL2.6
Pixel pitch	1.95 mm	2.6 mm
LED type	Flip Chip COB	Flip Chip COB
Panel resolution	256*256	192*192
Pixel density	262144 pixels/m ²	147456 pixels/m ²
Brightness	1200 nits	
IP rating	IP 41/21(Front/rear)	
Service access	Front & Rear	
Refresh rate	7680 Hz	
Contrast ratio	15000:1	
Color depth	16/18 Bit	
Viewing angle	Horizontal 170°; Vertical 140°	
Operational temperature	-10℃ ~ +45℃	
Operational humidity	10% ~ 80%	
Input voltage	100 ~ 240V / 50 ~ 60Hz	
Max. power consumption	150W/pc; 600W/m ²	
Panel dimension	500*500*70 mm; 19.69*19.69*2.76 inch (W*H*D)	
Weight	7.5 kg (16.54 lb)/pc; 30 kg (66.14 lb)/m ²	