

# Flexible Touring LED



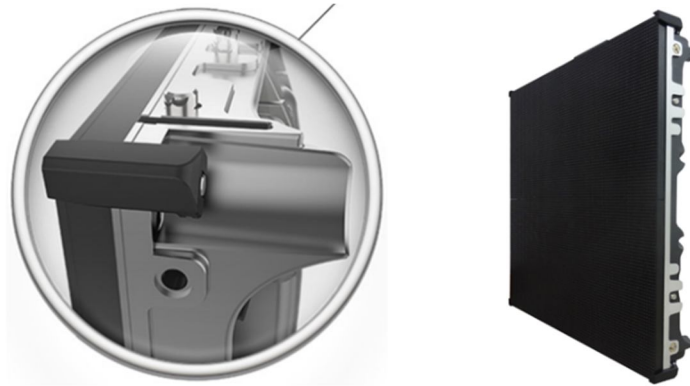
**Designed for rental and staging markets, the flexible touring LED display can give event companies the extra competitive edge over their competitors.**

**With the ability to bend max.  $\pm 25^\circ$  per side, namely,  $\pm 50^\circ$  per panel, almost any shape can be configured with the flexible touring LED display, be it cube, cylinder, S-shaped, etc.**

**Furthermore, they are compatible with normal touring LED displays and can be mixed and used together.**

# 1, Key features

## 1.1, Edge-protecting design



## 1.2, Extreme bendability: max. $\pm 25^\circ$ /side, namely, max. $\pm 50^\circ$ /panel







### 1.3, Compatible with normal touring LED and can be used together



## 2. Specifications

### 2.1 Indoor models

Model No.	ITLD1.9F	ITLD2.6F	ITLD2.9F	ITLD3.9F
Pixel pitch	1.95 mm	2.6 mm	2.98 mm	3.91 mm
LED type	SMD1515	SMD1515	SMD2020	SMD2121
Resolution	256 x 256	192 x 192	168 x 168	128 x 128
Pixel density	262,144 pixels/m <sup>2</sup>	147,456 pixels/m <sup>2</sup>	112,896 pixels/m <sup>2</sup>	65,536 pixels/m <sup>2</sup>
Brightness	800 nits	800 nits	1000 nits	1000 nits
Power consumption	Max. 550 W/m <sup>2</sup>	Max. 550 W/m <sup>2</sup>	Max. 550 W/m <sup>2</sup>	Max. 550 W/m <sup>2</sup>
IP rating	Indoor only			
Serviceability	Front/Rear			
Refresh rate	3840 Hz			
Color depth	14/16 Bit			
Viewing angle	Horizontal 140°; Vertical 140°			
LED lifetime	100,000 hrs (50% brightness)			
Operational temperature	-20℃ ~+45℃ / -4°F ~+113°F			
Operational humidity	10%~80%			
Input voltage	100~240V / 50~60Hz			
Dimensions	500*500*85 mm / 19.69*19.69*3.35 inch (W*H*D)			
Weight	7.5 kg (16.54 lbs)/pc; 30 kg (66.14 lbs)/ m2			

**Note: specifications are subject to change without prior notice.**

## 2.2 Outdoor Models

Model No.	OTLD2.6F	OTLD2.9F	OTLD3.9F
Pixel pitch	2.6 mm	2.97 mm	3.91 mm
LED type	SMD1415	SMD1415	SMD1921
Resolution	192 x 192	168 x 168	128 x 128
Pixel density	147456 pixels/m <sup>2</sup>	112896 pixels/m <sup>2</sup>	65536 pixels/m <sup>2</sup>
Brightness	4000 nits	4000 nits	4500 nits
Power consumption	Max.750 W/m <sup>2</sup>	Max.750 W/m <sup>2</sup>	Max.750 W/m <sup>2</sup>
IP rating	IP 65		
Serviceability	Front & Rear		
Refresh rate	3840 Hz		
Color depth	14/16 Bit		
Viewing angle	Horizontal 140°; Vertical 140°		
LED lifetime	80,000 hrs (50% brightness)		
Operational temperature	-20℃ ~+45℃ / -4°F ~+113°F		
Operational humidity	10%~80%		
Input voltage	100~240V / 50~60Hz		
Dimensions	500*500*85 mm / 19.69*19.69*3.35 inch (W*H*D);		
Weight	7.5 kg (16.54 lbs)/pc; 30 kg (66.14 lbs)/ m2		

**Note: specifications are subject to change without prior notice.**