



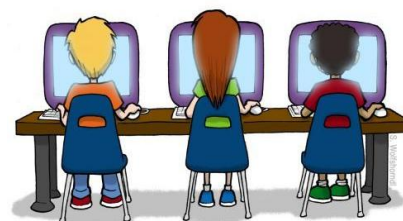
# PRE-UNI NEW COLLEGE

Office: Level 1, 1049-1051 Victoria Rd, West Ryde NSW 2114  
 PH: 0452 426 534 Email: preuninewcollege.ryde@gmail.com  
 Website: <https://preuninewcollegeryde.com.au>

## Year 4 Autumn Intensive OCTTC (7 – 17 April 2026)

The Year 4 OC Trial Test Course (OCTTC) will run throughout the autumn school holidays, providing the final round of intensive preparation before the 2026 OC Placement Test.

Over nine focused days, students will sit a series of full-length practice exams and receive targeted guidance to refine their skills. They’ll tackle realistic, exam-style questions across all subject areas, building the confidence and precision needed to approach every question effectively.



- **Course Name:** Year 4 Autumn OC Trial Test Course (OCTTC)
- **Course Period:** 7 – 10 April & 13 - 17 April 2026 (9 days)
- **Class Time\*:** 9:00am – 3:25pm

- Students will complete reading, mathematical reasoning, and thinking skills tests daily, simulating real exam conditions to enhance their performance.

### Year 4 Autumn OCTTC – Test Dates & Test Number

Autumn OCTTC WEEK 1				Autumn OCTTC WEEK 2				
7-April (Tue)	8-April (Wed)	9-April (Thu)	10-April (Fri)	13-April (Mon)	14-April (Tue)	15-April (Wed)	16-April (Thu)	17-April (Fri)
Test 61	Test 62	Test 63	Test 64	Test 65	Test 66	Test 67	Test 68	Test 69

### Year 4 Autumn OCTTC – Fee schedule

Students can choose to enrol in Week 1 (4 days) or Week 2 (5 days) or maximise value by joining both weeks for the full 9-day OCTTC at Early Bird discount rate. See the fee table below for details.

Course Name	Course dates	Test No.	Fee Total	Early Bird Payment Discount* until 5pm, 28 March 2026
Autumn OCTTC WEEK 1	7 – 10 April (4 days)	61 – 64	\$ 600	Not Applicable
Autumn OCTTC WEEK 2	13 – 17 April (5 days)	65 – 69	\$ 750	Not Applicable
Autumn OCTTC WEEKS 1 & 2	7 – 17 April (9 days)	61 - 69	\$ 1,350	<b>\$ 1,215 (10% OFF)</b>

- Early Bird Discount is available for full 9-day OCTTC payments by Saturday, 28 March 2026, 5 PM.
- The 9-day summer OCTTC must be completed at one branch — no transfers allowed.
- Scholarship Discount applies to full payments made by Saturday, 28 March 2026, 5 PM.
- Class time\* and location\* are subject to change based on enrolment numbers.
- Partial enrolments are not accepted – enrol in the full Week 1 or Week 2 or full 9-day holiday OCTTC.
- Sibling discounts are not applicable to the holiday OCTTC.