

# MID <sup>TO</sup> HIGH FIRE GLAZE



Balancing Act 2021  
Vipoo Sirvilsa  
Porcelain with  
Celadon glazes  
Insta: @vipooart

defining

## GLAZE

Glaze is a combination of minerals similar in composition to clay that when fired melt into a hard, glass-like surface that helps seal the clay. Some glazes are meant to be decorative, some are meant to be functional. Glaze can be applied a number of ways including brushing, dipping, and spraying and must be fired in a kiln to the appropriate temperature. Usually, glaze is applied to bisqueware. Unlike underglazes, glazes melt and can flow when fired, making them less ideal for detail work.

what is

## MID-FIRE GLAZE?

AMACO mid-fire glazes are formulated to be fired between Cone 5 and Cone 6 (around 2167°F to 2269°F) but some will fire as high as Cone 10 (around 2381°F).

the high-fire

## ADVANTAGE

AMACO mid-fire glazes provide a wide variety of finishes, colors, and translucencies. They yield similar results to Cone 10 ceramic ware without the added expense or damage to your equipment. Mid- and high-fire ware is more vitreous, meaning fired pieces are more impervious to water and made to withstand wear and tear. Several of AMACO's mid-fire lines (including Potter's Choice, Shino, and Celadon) are formulated to imitate traditional glazes and are ideal for layering, opening a world of countless, unique combinations.

need

## INSPIRATION?



Check out artists using AMACO mid-fire glazes by visiting:  
<https://www.amaco.com/layering>

High Fire glazes on  
AMACO 11-M A-Mix  
White Stoneware Clay.  
Fired to Cone 5.

# High Fire

for opaque  
vivid color



HF-56  
Red Gloss



HF-165  
Scarlet Red



HF-55  
Coral Gloss



HF-167  
Clementine



HF-166  
Orangerie



HF-161  
Bright Yellow



HF-142  
Chartreuse



HF-125  
Turquoise



HF-26  
Sahara Turquoise  
[matte]



HF-129  
Baby Blue



HF-127  
China Blue



HF-170  
Lilac



HF-171  
Amethyst



HF-9  
Zinc-Free Clear



HF-10  
Clear



HF-11  
White



HF-1  
Black

Tiles are AMACO 11-M A-Mix White Stoneware Clay. Fired to Cone 5.



Conforms to  
ASTM D-4236



Conforms to  
ASTM D-4236



Layering



Food Safe



Safe for Spray  
Application

\*AP glazes are  
safe for spray  
application.



Available in  
Dipping Buckets:  
HF-9 Zinc Free Clear

## TH texturizer

adds depth and variety  
to any high fire glaze



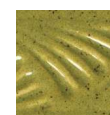
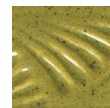
Conforms to  
ASTM D-4236



Layering

TH-1  
Texturizer  
over  
PC-29  
Deep  
Olive  
Speckle

PC-29  
Deep  
Olive  
Speckle  
over  
TH-1  
Texturizer



Tiles are AMACO 11-M A-Mix White Stoneware Clay. Fired to Cone 5.



Satin Matte glazes on  
AMACO 11-M A-Mix  
White Stoneware Clay.  
Fired to Cone 5.

for a mixable satin feel



**SATIN  
MATTE**



SM-51  
Red



SM-53  
Cayenne



SM-68  
Orange



SM-60  
Goldenrod



SM-63  
Yellow



SM-44  
Chartreuse



SM-42  
Mint



SM-46  
Moss



SM-27  
Teal



SM-29  
Blue Green



SM-20  
Light Blue



SM-24  
Seafoam



SM-21  
Dark Blue



SM-2  
Stone



SM-3  
Marble



SM-11  
White



SM-10  
Clear Satin



SM-1  
Black

*Tiles are AMACO 11-M A-Mix White Stoneware Clay. Fired to Cone 5.*



# Shines 埴

for a mottled,  
sophisticated look



SH - 52  
Hibiscus Matte  
Cone 5

SH - 46  
Matcha Matte  
Cone 5



# Gloss



SH-41  
Oolong Gloss



SH-11  
Chai Gloss



SH-21  
Acai Gloss



SH-31  
Cacao Gloss



SH-45  
Matcha Gloss



SH-51  
Hibiscus Gloss

# Matte



SH-42  
Oolong Matte



SH-12  
Chai Matte



SH-22  
Acai Matte



SH-32  
Cacao Matte



SH-46  
Matcha Matte



SH-52  
Hibiscus Matte



SH - 22  
Acai Matte  
Cone 5



# POTTER'S

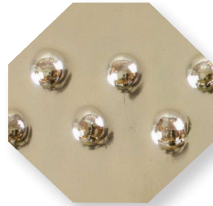
## choice



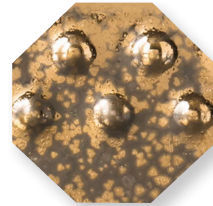
PC-1  
Saturation Metallic



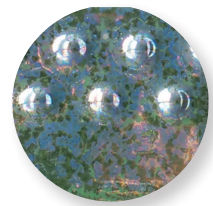
PC-2  
Saturation Gold



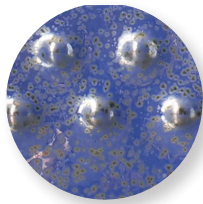
PC-4   
Palladium



PC-9   
Vintage Gold



PC-10  
June Bug



PC-11  
Blue Spark



PC-12  
Blue Midnight



PC-15  
Satin Oribe



PC-16  
Purple Crystal



PC-17  
Honey Flux



PC-20  
Blue Rutile



PC-21  
Arctic Blue



PC-22  
Blue Stone



PC-23  
Indigo Float



PC-24  
Sapphire Float



PC-25  
Textured Turquoise



PC-26  
Blue Lagoon



PC-27  
Tourmaline



PC-28  
Frosted Turquoise

Tiles are AMACO 46-M Buff Stoneware Clay. Fired to Cone 5.



Conforms to  
ASTM D-4236



Conforms to  
ASTM D-4236



Conforms to  
ASTM D-4236



Layering™



Food Safe™

\* \* Except PC-4  
Palladium, PC-9  
Vintage Gold,  
PC-64 Aventurine.



Safe for Spray  
Application™

\*\* \* All No Seal and AP glazes are safe  
for spray application except PC-29  
Deep Olive Speckle, PC-52 Deep  
Sienna Speckle, PC-59 Deep Firebrick,  
and PC-63 Cosmic Tea Dust



for a reduction look



PC-29  
Deep Olive Speckle



PC-30  
Temmoku



PC-31  
Oatmeal



PC-32  
Albany Slip Brown



PC-33  
Iron Lustre



PC-34  
Light Sepia



PC-36  
Ironstone



PC-38  
Iron Yellow



Layered PC glazes by  
Austin and  
Courtney Cook  
@theclayplant



Layered PC glazes by  
Austin and Courtney Cook  
@theclayplant



PC-40  
True Celadon



PC-41  
Vert Lustre



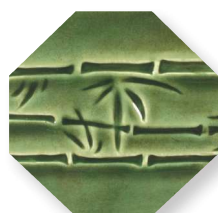
PC-42  
Seaweed



PC-43  
Toasted Sage



PC-44  
Sage



PC-45  
Dark Green



PC-46  
Lustrous Jade



PC-47  
Emerald Falls



PC-48  
Art Deco Green



PC-49  
Frosted Melon

*Tiles are AMACO 46-M Buff Stoneware Clay. Fired to Cone 5.*

# POTTER'S

choice



PC-52  
Deep Sienna Speckle



PC-53  
Ancient Jasper



PC-55  
Chun Plum



PC-57  
Smokey Merlot



PC-59  
Deep Firebrick



PC-61  
Textured Amber



PC-62  
Textured Amber  
Brown



PC-63  
Cosmic Tea Dust



PC-64  
Aventurine



PC-65  
Black Aventurine



PC-66  
Cosmic Oil Spot



PC-67  
River Rock



PC-70  
Copper Red



PC-71  
Flambé



\* \* Except PC-4  
Palladium, PC-9  
Vintage Gold,  
PC-64 Aventurine.



\*\* All No Seal and AP glazes are safe  
for spray application except PC-29  
Deep Olive Speckle, PC-52 Deep  
Sienna Speckle, PC-59 Deep Firebrick,  
and PC-63 Cosmic Tea Dust

# POTTER'S choice FLUX



PCF-3  
Midnight Run



PCF-18  
Honeydew



PCF-19  
Cirrus Flow



PCF-54  
Flux Blossom



PCF-74  
River Birch



PCF-75  
Moss Mist

Tiles are AMACO 11-M White Art Clay. Fired to Cone 6.



designed for movement and flow



Conforms to  
ASTM D-4236

Layering

Food Safe

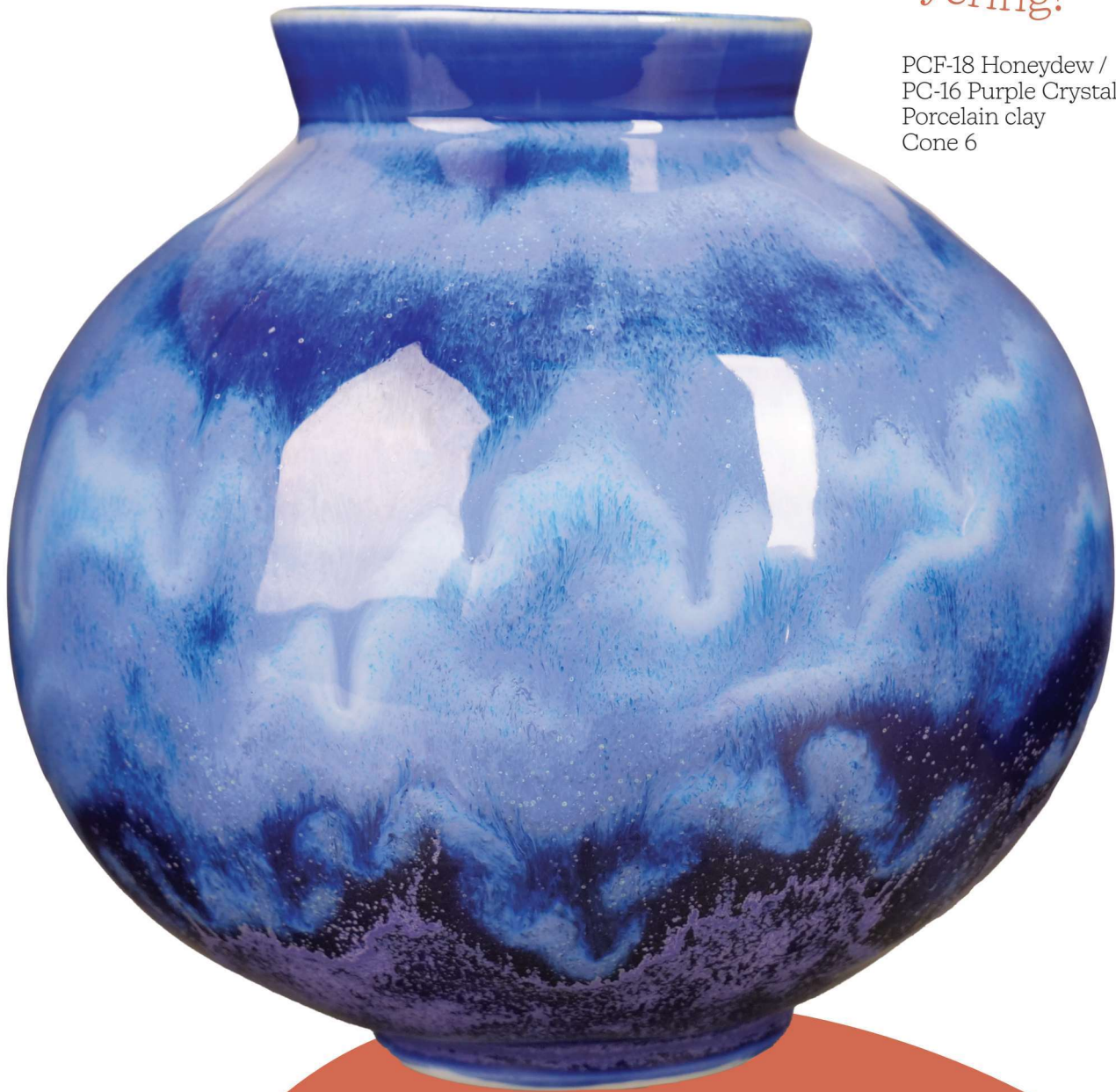
Safe for Spray  
Application

\*Glazes marked as  
AP are safe for spray  
application.



*Great for layering!*

PCF-18 Honeydew /  
PC-16 Purple Crystal  
Porcelain clay  
Cone 6



PC-52  
Deep Sienna Speckle/  
PCF-75  
Moss Mist



PCF-54  
Flux Blossom/  
PC-70  
Copper Red



PCF-18  
Honeydew/  
PC-55  
Chun Plum



PC-70  
Copper Red/  
PCF-3  
Midnight Run



PCF-19  
Cirrus Flow/  
PC-30  
Temmoku

*Layering cups are 2 brushing coats over 2 brushing coats on AMACO 11-M White Art Clay. Fired to Cone 6.*

# Celadon



\*Tiles are Amaco  
11-M A-Mix White  
Stoneware Clay.  
Fired to cone 5.



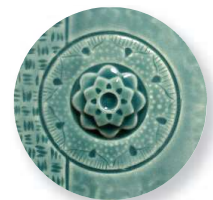
C-11  
Mixing Clear



C-10  
Snow



C-19  
Glacier



C-22  
Fog



C-21  
Sky



C-20  
Cobalt



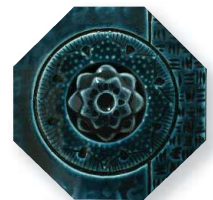
C-56  
Lavender



C-57  
Mulberry



C-25  
Downpour



C-27  
Storm



Jan-Urs 2021  
Vipoo Srivilasa  
Porcelain with Celadon Glazes  
Insta: @vipooart