



## Soft Shell : Portfolio

---

Luxury Women's Ready to Wear  
Autumn | Winter  
2020 | 2021

FFD 40B | Senior Design Project



20 April 2020

*mě·nə·kä*



## PENTIMENTO

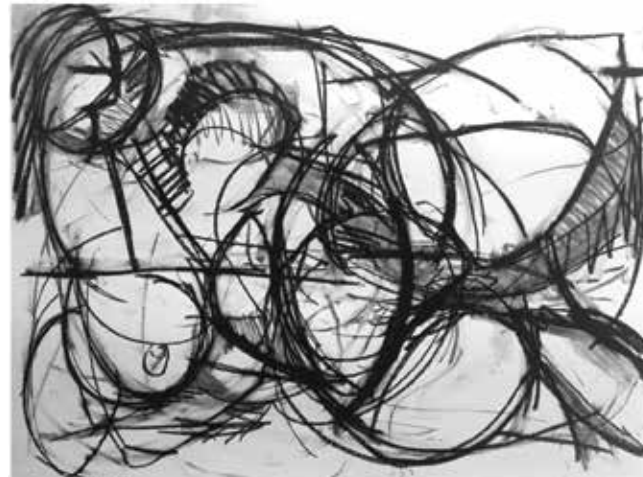
The foundation of this design project is embedded in my own personal hybridization of life and visual art. Choosing art over comfort, and expression over conformity are the main points of tension explored in this collection.

Drawing from experiences and lessons in fine arts, pentimento has become a familiar and favourite concept to explore in various forms of media.

Pentimento is a derivative of the Italian word for repentance (Pentimento, n.d.). In this regard, the application of the term pentimento refers to the covering of a previous work on a material with new art, however remnant of the old work can be seen through the finished piece (The National Gallery, n.d.).

Seeing the layers of history and decisions within artworks displaying pentimento is a reflexive activity, a key part of understanding the path that leads to the present. Introspection and recognition of the past in order to move into the future is the crux of Soft Shell. Being able to take ownership of faults and self-proclaimed flaws, as well as discarding inaccurate perceptions of oneself allows space for growth in identity and independence of character.

Practically, soft tones and textures used in sharp and expressive structures for the body demonstrate the dialogue between the old and new; recognizing the old for how it built the new, and veneration for the new clearing out the obsolete.



SOFT SHELL A | W 2021

SKETCHING, MEDITATING AND LOOKING AT FINE ART INFORMS MY DESIGN PROCESS.

OVERRIDING MY INNER CRITIC AND CREATING WITHOUT SELF-DOUBT IS A VERY DIFFICULT TASK, WHICH REQUIRES PATIENCE AND PRECISION IN MY DESIGNS. THIS PRESENTS ITSELF IN SHARP SILHOUETTES, HARD LINES AND REPETITION.

SOME ELEMENTS OF FLUIDITY AND RAW SEAMS ADDRESS THE CHALLENGE I FACE IN ACCEPTING MY FLAWS THROUGHOUT THIS DESIGN EXPERIENCE.

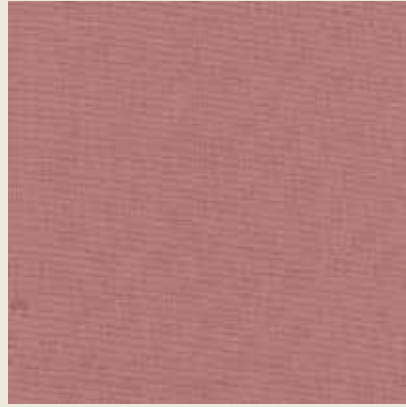




SOFT SHELL A | W 2021



Italian Silk shirting - 90 g/m  
100% silk  
140 cm - \$7.48/m  
sauterne



Italian Cotton/Synthetic blend - 115 g/m  
68% cotton | 28% polyamide | 4% elastane  
133-143 cm - \$3.66/m  
alabaster



Italian Cotton/Linen blend - 310 g/m  
59% cotton | 41% linen  
145 cm - \$7.93/m  
limestone



Italian Cotton/Wool blend - 630 g/m  
50% cotton | 50% wool  
150 cm - \$5.91/m  
prune



Italian Silk lining - 16 mm/m  
100% silk  
135-137 cm - \$2.50/m  
new peach



Italian Wool suiting - 200-220 g/m  
100% wool  
150 cm - \$4.52/m  
black



Italian Cotton/Virgin Wool blend - 273 g/m  
62% cotton | 38% virgin wool  
140 cm - \$3.40/m  
charcoal



Pellon fusible interfacing - unknown density  
100% synthetic fibre and adhesive  
100-120 cm - \$1.00/m  
grey

SOFT SHELL A | W 2021



SOFT SHELL A | W 2021





SOFT SHELL A | W 2021



ORDER



DEVELOP



PRESERVE



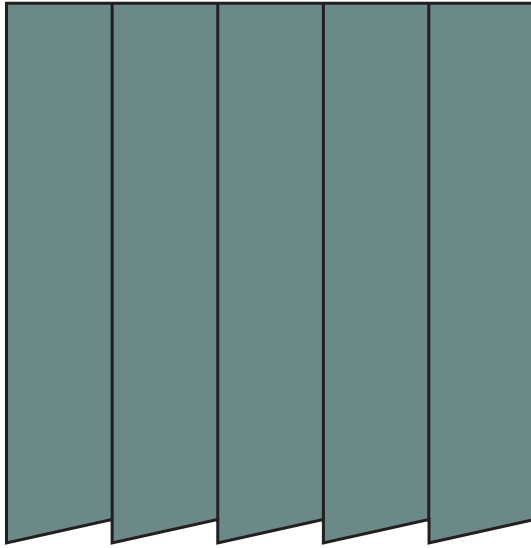
SOFT SHELL A | W 2021



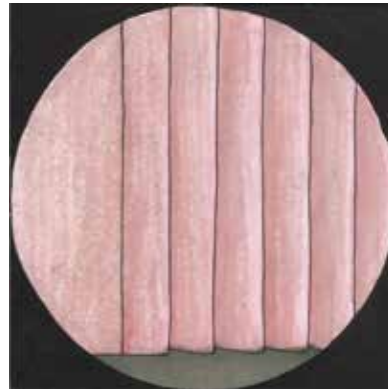
COMMAND



CONTINUE



DESIGN DETAIL | KNIFE PLEATS



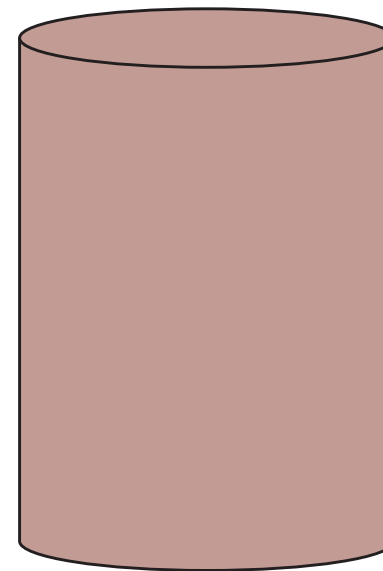
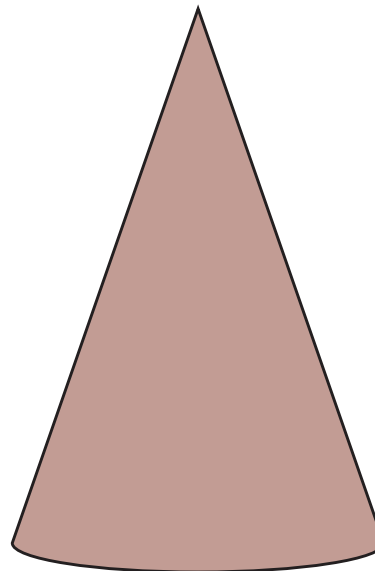
M\_AW21\_21



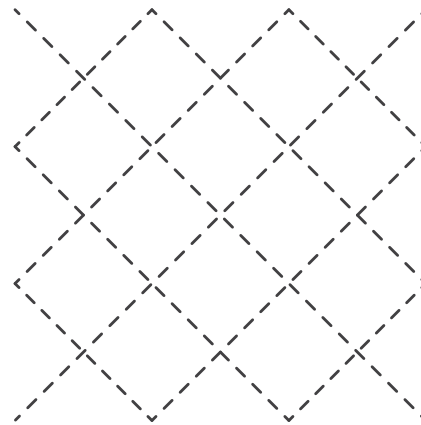
M\_AW21\_31



M\_AW21\_4



SILHOUETTE | CONICAL AND CYLINDRICAL



ALTERED FABRIC | QUILTING AND TOP STITCHING



M\_AW21\_22



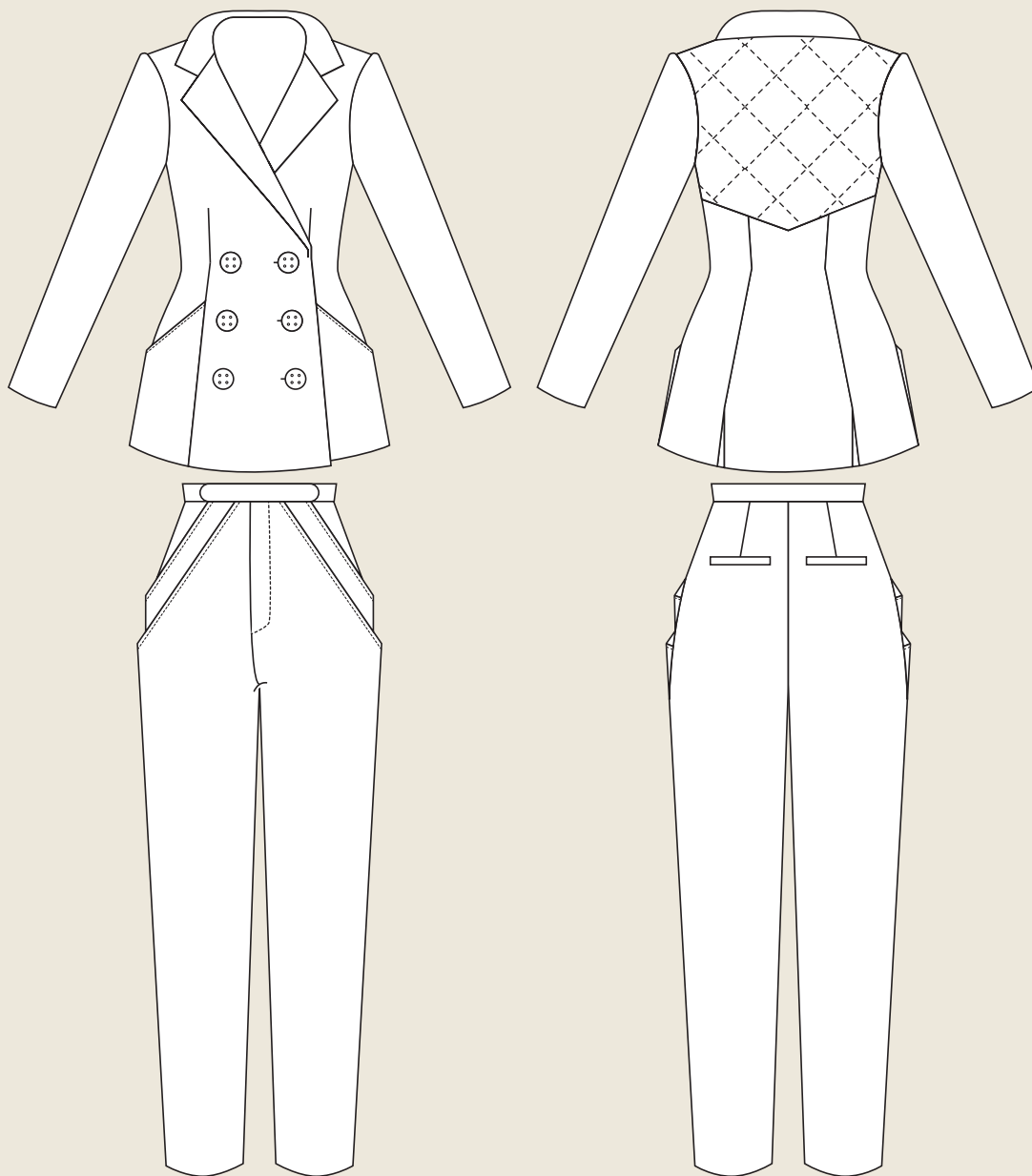
M\_AW21\_33

mē·nə·kā

SOFT SHELL A | W 2021

THE COLLECTION

ORDER

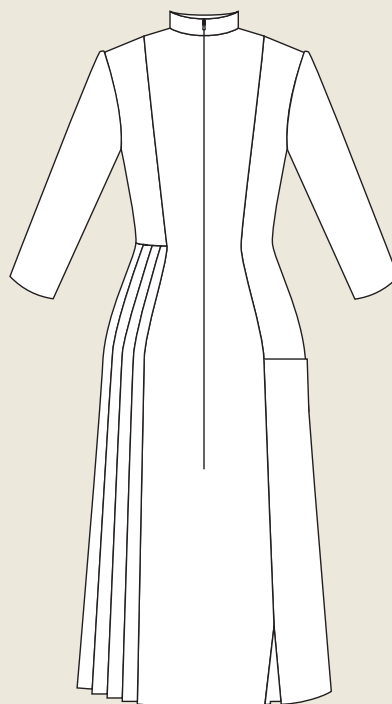
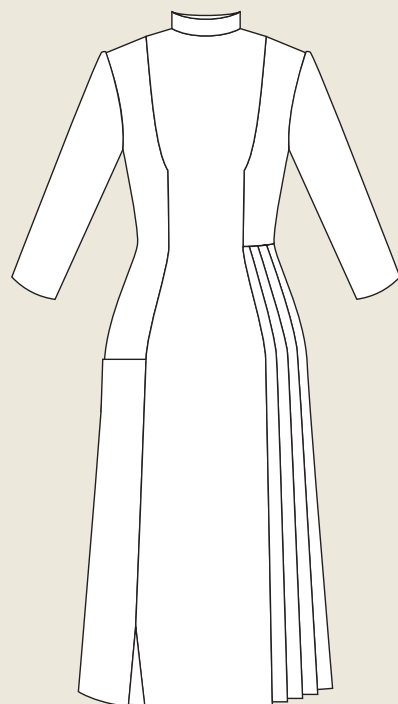
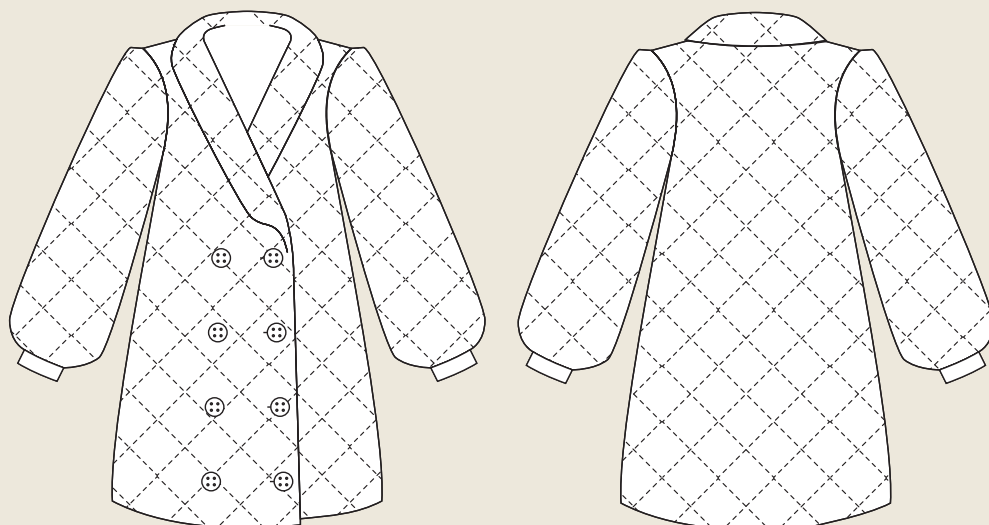


Italian Cotton/Linen blend - 310 g/m  
59% cotton | 41% linen  
145 cm  
limestone



Italian Silk lining - 16 mm/m  
100% silk  
135-137 cm  
new peach

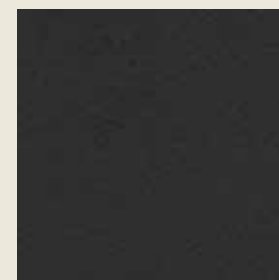




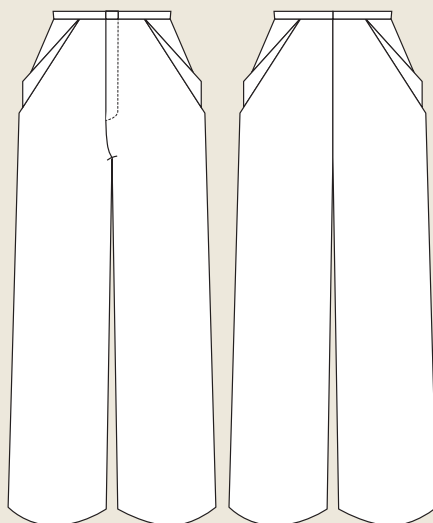
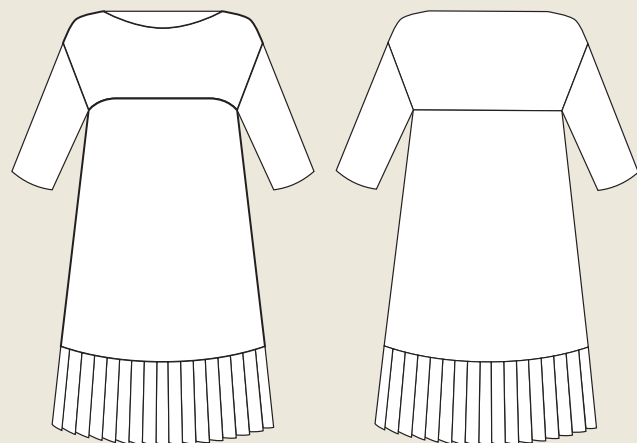
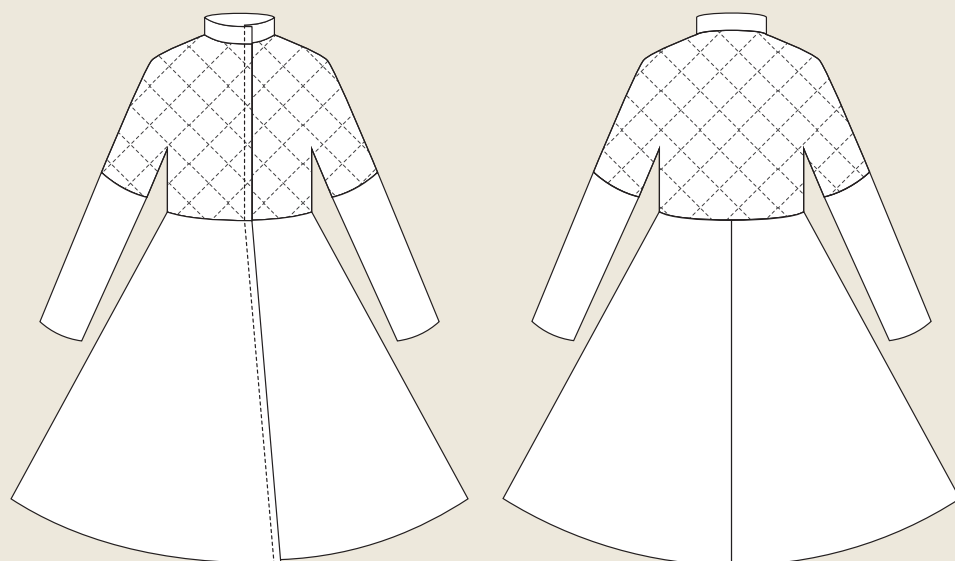
Italian Silk lining - 16 mm/m  
100% silk  
135-137 cm  
new peach



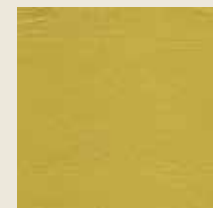
Italian Cotton/Synthetic blend - 115 g/m  
68% cotton | 28% polyamide | 4% elastane  
133-143 cm  
alabaster



Italian Cotton/Virgin Wool blend - 273 g/m  
62% cotton | 38% virgin wool  
140 cm  
charcoal



Italian Cotton/Linen blend - 310 g/m  
59% cotton | 41% linen  
145 cm  
limestone



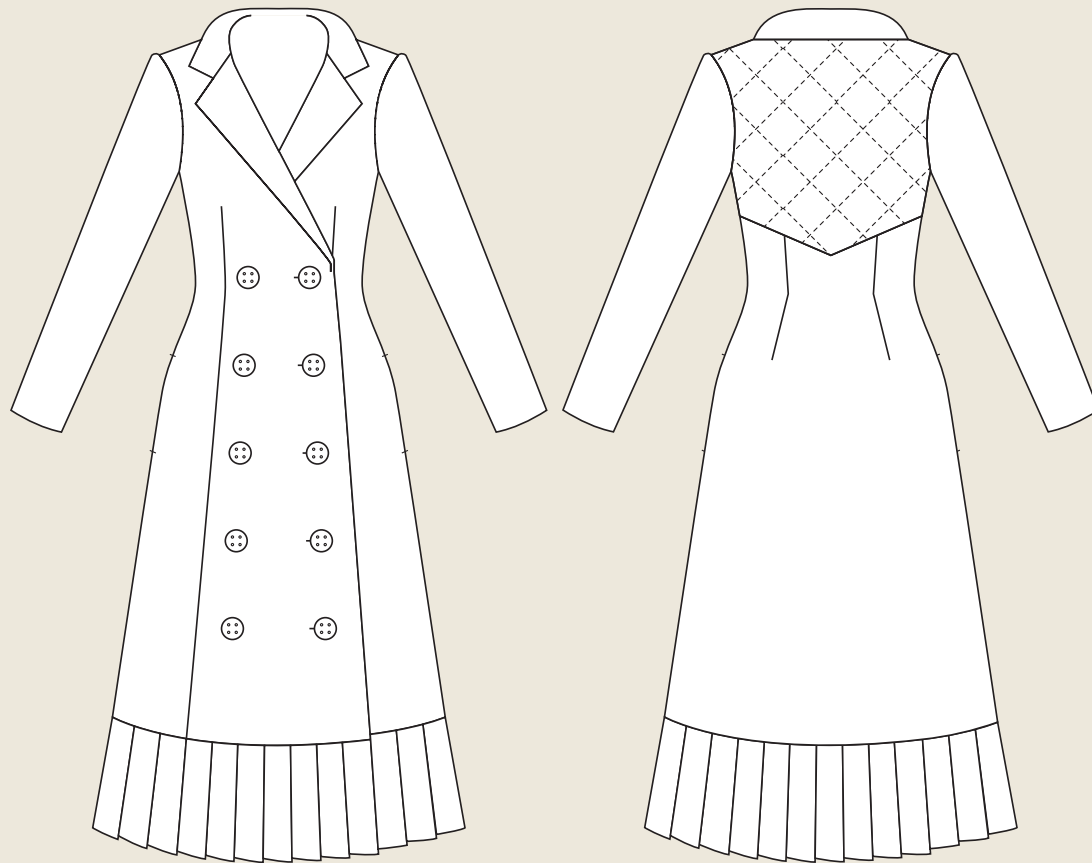
Italian Silk shirting - 90 g/m  
100% silk  
140 cm  
sauterne



Italian Wool suiting - 200-220 g/m  
100% wool  
150 cm  
black



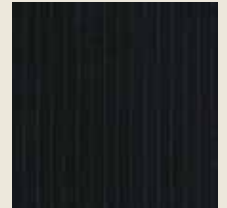
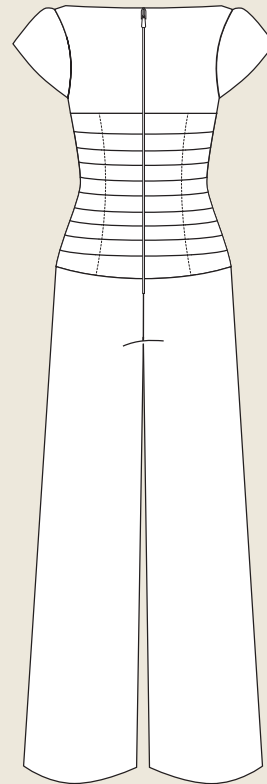
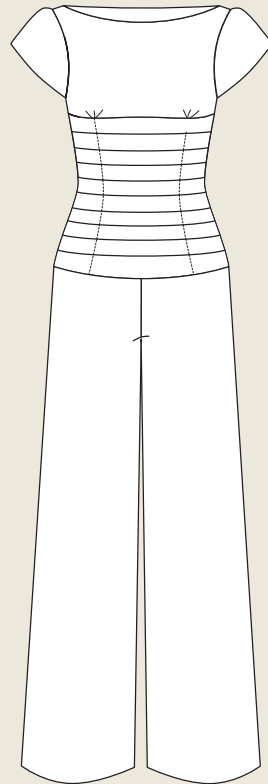
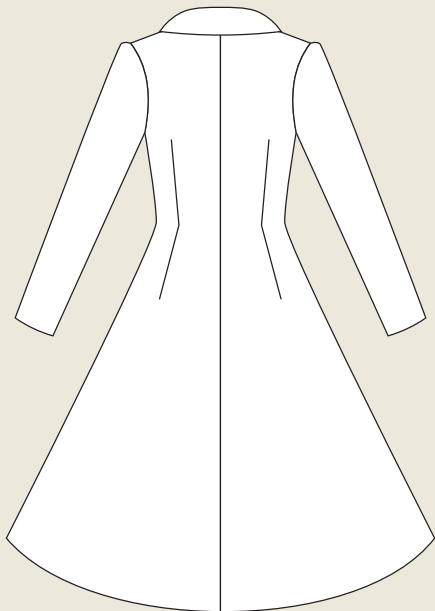
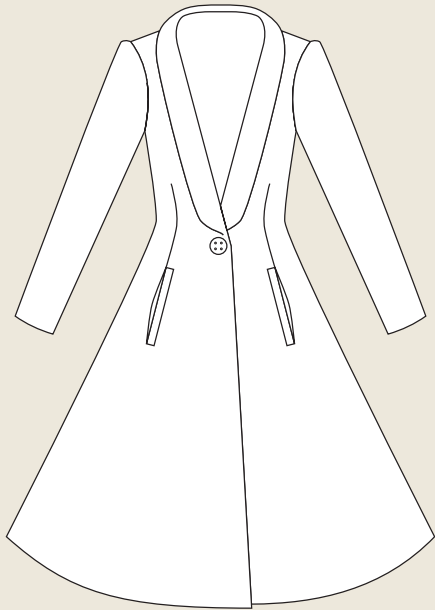
Italian Silk lining - 16 mm/m  
100% silk  
135-137 cm  
new peach



Italian Silk lining - 16 mm/m  
100% silk  
135-137 cm  
new peach



Italian Cotton/Synthetic blend - 115 g/m  
68% cotton | 28% polyamide | 4% elastane  
133-143 cm  
alabaster



Italian Wool suiting - 200-220 g/m  
100% wool  
150 cm  
black



Italian Cotton/Wool blend - 630 g/m  
50% cotton | 50% wool  
150 cm  
prune



Italian Silk lining - 16 mm/m  
100% silk  
135-137 cm  
new peach



Italian Silk shirting - 90 g/m  
100% silk  
140 cm  
saunterne





M\_AW21\_11



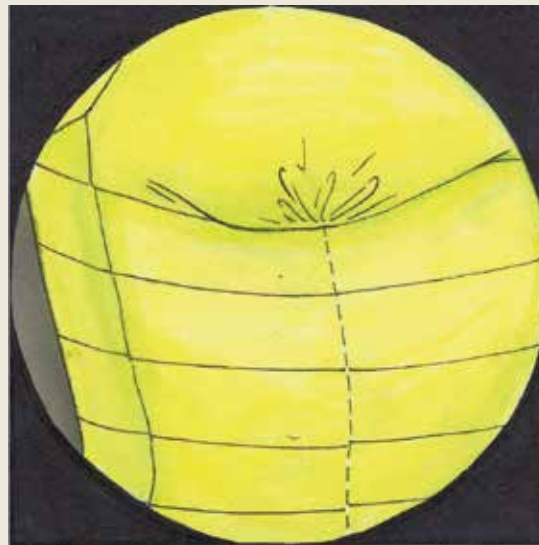
M\_AW21\_12



M\_AW21\_32



M\_AW21\_4



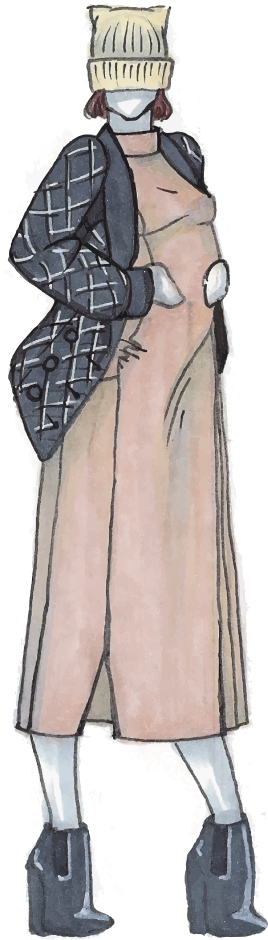
M\_AW21\_51



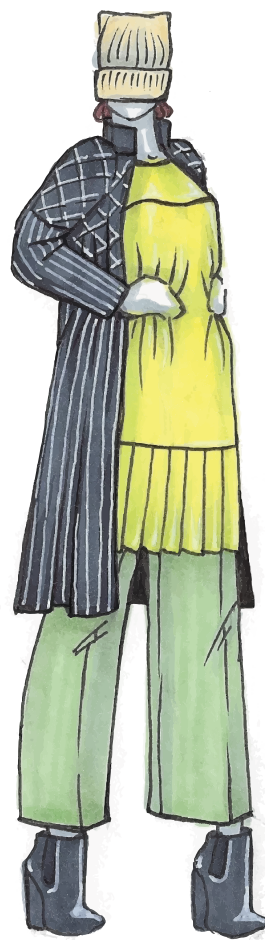
M\_AW21\_52



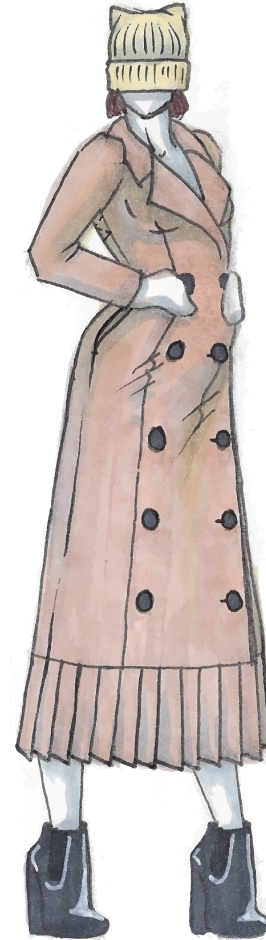
ORDER



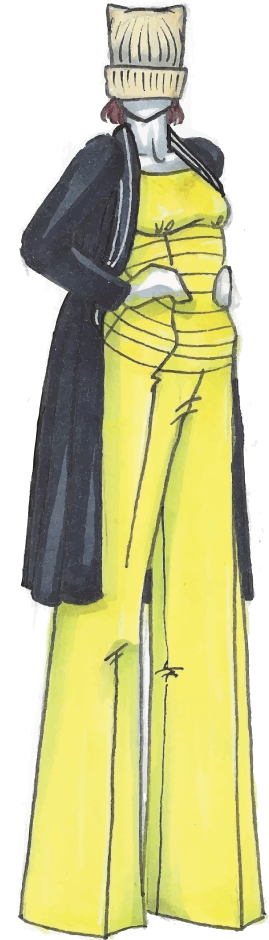
DEVELOP



PRESERVE



COMMAND



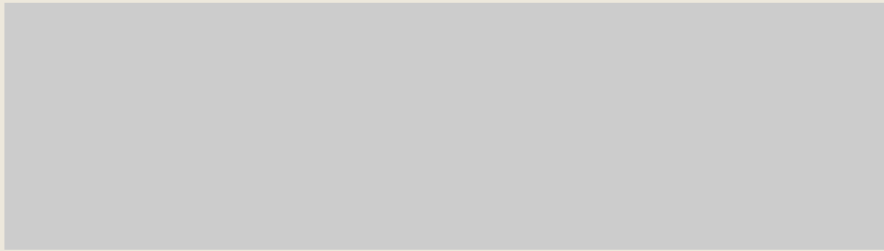
CONTINUE

*mě·nə·kā*

THE CONTACT

---

SOFT SHELL A | W 2021



THANK YOU.