



**SEEIF**  
Ceramic, a.s.

## GATING SYSTEM LINE R, V



MORAVSKÉ KERAMICKÉ ZÁVODY

PRODUCTION PLANT 1 MKZ FIRECLAY FACTORY

**KERAVIT**

PRODUCTION PLANT 3 KERAVIT



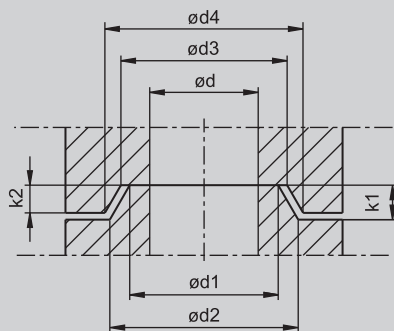
NORTH AMERICAN EDITION

## CONTENT

CUP ET, TR, TV .....	2
TUBE R .....	3
TUBE NN .....	4
TUBE FF .....	4
RING RUNNER ANGLE TUBE RWR .....	5
REDUCTION TUBE RK .....	5
EXPANSION TUBE EXPK .....	5
ELBOW K (OUTSIDE SQUARE) .....	6
ELBOW KR (OUTSIDE ROUND) .....	6
L-PIECE .....	7
T-PIECE .....	7
TX-PIECE .....	8
KING BRICK H .....	8
INGATE TUBE AS .....	9
DUCK FOOT ST .....	9
DUCK FOOT ELBOW MAB .....	10
DUCK FOOT CROSSED MABQ .....	10
WHIRL GATE OD .....	11
LADLE CLOSING SYSTEM .....	12
ABBREVIATIONS .....	16

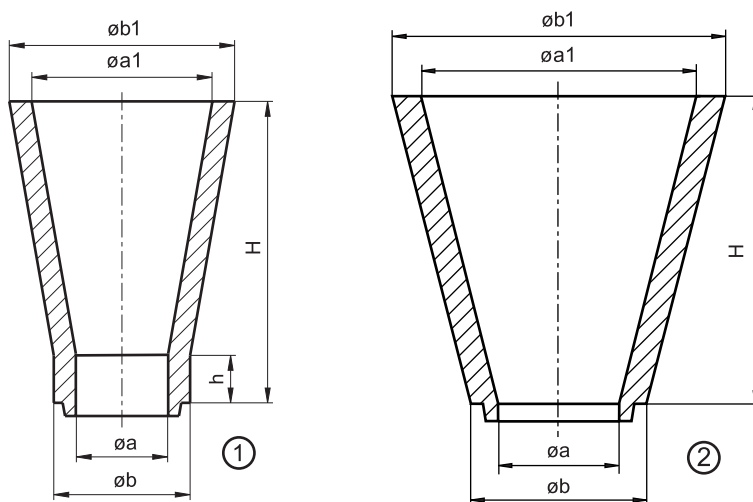
Description:	Fireclay shapes are shaped refractory products with increased resistance against penetration by molten metal.
Use:	The shaped products are designed for casting systems and are replaced after each use.
Specification:	Detailed specifications are given in our data sheets.
Packaging:	The products are supplied on pallets, secured with straps and shrink/wrapped.
Storing:	The products should be stored in enclosed warehouses.

MALE-FEMALE SYSTEM



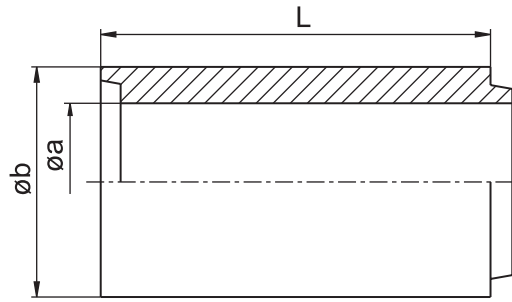
d		d1		d2		d3		d4		k1		k2	
(mm)	(in)	(mm)	(in)	(mm)	(in)	(mm)	(in)	(mm)	(in)	(mm)	(in)	(mm)	(in)
30	1.18	39	1.54	43	1.69	42	1.65	46	1.81	9	0.35	8	0.31
40	1.57	49	1.93	53	2.09	52	2.05	56	2.20	9	0.35	8	0.31
50	1.97	59	2.32	63	2.48	62	2.44	66	2.60	9	0.35	8	0.31
60	2.36	69	2.72	73	2.87	73	2.87	77	3.03	9	0.35	8	0.31
70	2.76	82	3.23	86	3.39	86	3.39	90	3.54	9	0.35	8	0.31
80	3.15	96	3.78	100	3.94	100	3.94	104	4.09	10	0.39	9	0.35
100	3.94	116	4.57	120	4.72	120	4.72	124	4.88	10	0.39	9	0.35
120	4.72	136	5.35	139	5.47	142	5.59	145	5.71	10	0.39	9	0.35
140	5.51	156	6.14	160	6.30	160	6.30	164	6.46	10	0.39	9	0.35
150	5.91	172	6.69	175	6.81	176	6.93	179	7.05	10	0.39	9	0.35

## CUP ET, TR, TV



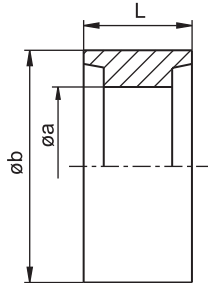
type	model	a		a1		b		b1		h		H	
		(mm)	(in)	(mm)	(in)	(mm)	(in)	(mm)	(in)	(mm)	(in)	(mm)	(in)
TR40/163/30	1	40	1.57	130	5.12	70	2.76	160	6.30	30	1.18	193	7.60
ET50/125/195	1	50	1.97	125	4.92	75	2.95	149	5.87	10	0.39	195	7.68
ET50/125/225	1	50	1.97	125	4.92	75	2.95	149	5.87	40	1.57	225	8.86
ET50/125/245	1	50	1.97	125	4.92	75	2.95	149	5.87	60	2.36	245	9.65
ET50/125/250	1	50	1.97	125	4.92	75	2.95	149	5.87	65	2.56	250	9.84
ET50/125/285	1	50	1.97	125	4.92	75	2.95	149	5.87	100	3.94	285	11.22
ET50/125/295	1	50	1.97	125	4.92	75	2.95	149	5.87	110	4.33	295	11.61
TR60/100/180	1	60	2.36	110	4.33	90	3.54	140	5.51	180	7.09	280	11.02
TR60/120/20	1	60	2.36	110	4.33	90	3.54	140	5.51	20	0.79	140	5.51
TR60/135/60	1	60	2.36	140	5.51	90	3.54	170	6.69	60	2.36	195	7.68
TR60/170/220	1	60	2.36	150	5.91	90	3.54	180	7.09	220	8.66	390	15.35
TR60/200/20	1	60	2.36	180	7.09	90	3.54	210	8.27	20	0.79	220	8.66
ET70/155/150	1	70	2.76	155	6.10	100	3.94	185	7.28	30	1.18	150	5.91
ET70/155/195	1	70	2.76	155	6.10	100	3.94	185	7.28	75	2.95	195	7.68
ET70/155/245	1	70	2.76	155	6.10	100	3.94	185	7.28	125	4.92	245	9.65
TR80/170/25	1	80	3.15	160	6.30	115	4.53	200	7.87	25	0.98	195	7.68
TR80/250/30	1	80	3.15	225	8.86	115	4.53	265	10.43	30	1.18	280	11.02
TR100/170/30	1	100	3.94	190	7.48	140	5.51	230	9.06	30	1.18	200	7.87
TR100/250/30	1	100	3.94	225	8.86	140	5.51	265	10.43	30	1.18	280	11.02
ET100/270/220	1	100	3.94	270	10.63	160	6.30	320	12.60	45	1.77	220	8.66
TV100/230	2	100	3.94	250	9.84	140	5.51	300	11.81	-	-	230	9.06
TV100/300	2	100	3.94	300	11.81	150	5.91	350	13.78	-	-	300	11.81
TR120/170/30	1	120	4.72	210	8.27	160	6.30	250	9.84	30	1.18	200	7.87
TR120/250/30	1	120	4.72	225	8.86	165	6.50	265	10.43	30	1.18	280	11.02
TV120/200	2	120	4.72	305	12.01	160	6.30	350	13.78	-	-	200	7.87
TV120/280	2	120	4.72	240	9.45	160	6.30	280	11.02	-	-	280	11.02
TV120/300	2	120	4.72	280	11.02	160	6.30	316.50	12.46	-	-	220	8.66
TV140/200	2	140	5.51	305	12.01	180	7.09	350	13.78	-	-	200	7.87
TV150/350	2	150	5.91	300	11.81	200	7.87	350	13.78	-	-	350	13.78

# TUBE R



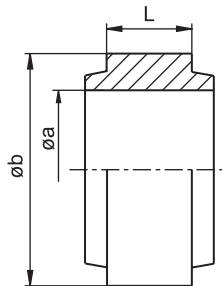
type	a		b		L		type	a		b		L	
	(mm)	(in)	(mm)	(in)	(mm)	(in)		(mm)	(in)	(mm)	(in)	(mm)	(in)
R30/50	30	1.18	55	2.17	50	1.97	R80/50	80	3.15	115	4.53	50	1.97
R30/100					100	3.94	R80/100					100	3.94
R30/150					150	5.91	R80/150					150	5.91
R30/200					200	7.87	R80/200					200	7.87
R30/250					250	9.84	R80/250					250	9.84
R30/300					300	11.81	R80/300					300	11.81
R40/50	40	1.57	65	2.56	50	1.97	R100/50	100	3.94	140	5.51	50	1.97
R40/100					100	3.94	R100/100					100	3.94
R40/150					150	5.91	R100/150					150	5.91
R40/200					200	7.87	R100/200					200	7.87
R40/250					250	9.84	R100/250					250	9.84
R40/300					300	11.81	R100/300					300	11.81
R50/50	50	1.97	75	2.95	50	1.97	R120/50	120	4.72	165	6.50	50	1.97
R50/100					100	3.94	R120/100					100	3.94
R50/150					150	5.91	R120/150					150	5.91
R50/200					200	7.87	R120/200					200	7.87
R50/250					250	9.84	R120/250					250	9.84
R50/300					300	11.81	R120/300					300	11.81
R60/50	60	2.36	90	3.54	50	1.97	R140/50	140	5.51	180	7.09	50	1.97
R60/100					100	3.94	R140/100					100	3.94
R60/150					150	5.91	R140/150					150	5.91
R60/200					200	7.87	R140/200					200	7.87
R60/250					250	9.84	R140/250					250	9.84
R60/300					300	11.81	R140/300					300	11.81
R70/50	70	2.76	100	3.94	50	1.97	R150/50	150	5.91	200	7.87	50	1.97
R70/100					100	3.94	R150/100					100	3.94
R70/150					150	5.91	R150/150					150	5.91
R70/200					200	7.87	R150/200					200	7.87
R70/250					250	9.84	R150/250					250	9.84
R70/300					300	11.81	R150/300					300	11.81

## TUBE NN



type	a		b		L	
	(mm)	(in)	(mm)	(in)	(mm)	(in)
R30/30NN	30	1.18	55	2.17	30	1.18
R30/50NN	30	1.18	55	2.17	50	1.97
R40/30NN	40	1.57	65	2.56	30	1.18
R50/30NN	40	1.57	65	2.56	50	1.97
R50/30NN	50	1.97	75	2.95	30	1.18
R50/50NN	50	1.97	75	2.95	50	1.97
R60/30NN	60	2.36	90	3.54	30	1.18
R50/50NN	60	2.36	90	3.54	50	1.97
R70/30NN	70	2.76	100	3.94	30	1.18
R70/50NN	70	2.76	100	3.94	50	1.97
R80/30NN	80	3.15	115	4.53	30	1.18
R80/50NN	80	3.15	115	4.53	50	1.97
R100/30NN	100	3.94	140	5.51	30	1.18
R100/50NN	100	3.94	140	5.51	50	1.97
R100/100NN	100	3.94	140	5.51	100	3.94
R120/30NN	120	4.72	165	6.50	30	1.18
R120/50NN	120	4.72	165	6.50	50	1.97
R120/100NN	120	4.72	165	6.50	100	3.94
R140/50NN	140	5.51	180	7.09	50	1.97
R140/100NN	140	5.51	180	7.09	100	3.94
R150/50NN	150	5.91	200	7.87	50	1.97
R150/100NN	150	5.91	200	7.87	100	3.94

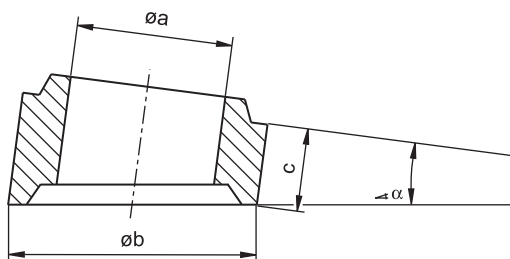
## TUBE FF



type	a		b		L	
	(mm)	(in)	(mm)	(in)	(mm)	(in)
R30/30FF	30	1.18	55	2.17	30	1.18
R30/50FF	30	1.18	55	2.17	50	1.97
R40/30FF	40	1.57	65	2.56	30	1.18
R40/50FF	40	1.57	65	2.56	50	1.97
R50/30FF	50	1.97	75	2.95	30	1.18
R50/50FF	50	1.97	75	2.95	50	1.97
R60/30FF	60	2.36	90	3.54	30	1.18
R60/50FF	60	2.36	90	3.54	50	1.97
R70/30FF	70	2.76	100	3.94	30	1.18
R70/50FF	70	2.76	100	3.94	50	1.97
R80/30FF	80	3.15	115	4.53	30	1.18
R80/50FF	80	3.15	115	4.53	50	1.97
R100/30FF	100	3.94	140	5.51	30	1.18
R100/50FF	100	3.94	140	5.51	50	1.97
R100/100FF	100	3.94	140	5.51	100	3.94
R120/50FF	120	4.72	165	6.50	50	1.97
R120/100FF	120	4.72	165	6.50	100	3.94
R140/50FF	140	5.51	180	7.09	50	1.97
R140/100FF	140	5.51	180	7.09	100	3.94
R150/50FF	150	5.91	200	7.87	50	1.97
R150/100FF	150	5.91	200	7.87	100	3.94

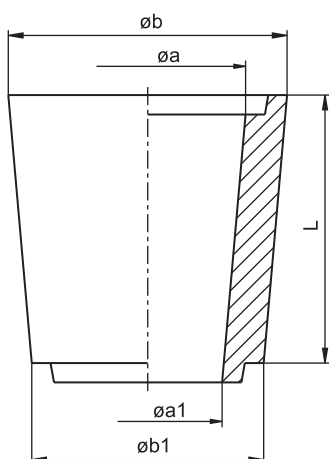


## RING RUNNER ANGLE TUBE RWR



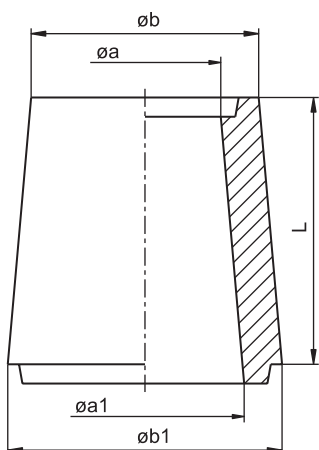
type	a		b		c		α (°)
	(mm)	(in)	(mm)	(in)	(mm)	(in)	
RWR60	60	2.36	90	3.54	30	1.18	7.5
RWR70	70	2.76	100	3.94	30	1.18	7.5
RWR70/15°	70	2.76	100	3.94	30	1.18	15
RWR80	80	3.15	115	4.53	30	1.18	7.5
RWR80/15°	80	3.15	115	4.53	30	1.18	15
RWR100	100	3.94	140	5.51	30	1.18	7.5
RWR100/15°	100	3.94	146	5.75	30	1.18	15
RWR120	120	4.72	165	6.50	30	1.18	7.5
RWR120/15°	120	4.72	165	6.50	30	1.18	15
RWR140	140	5.51	180	7.09	100	3.94	7.5
RWR140/15°	140	5.51	180	7.09	100	3.94	15

## REDUCTION TUBE RK



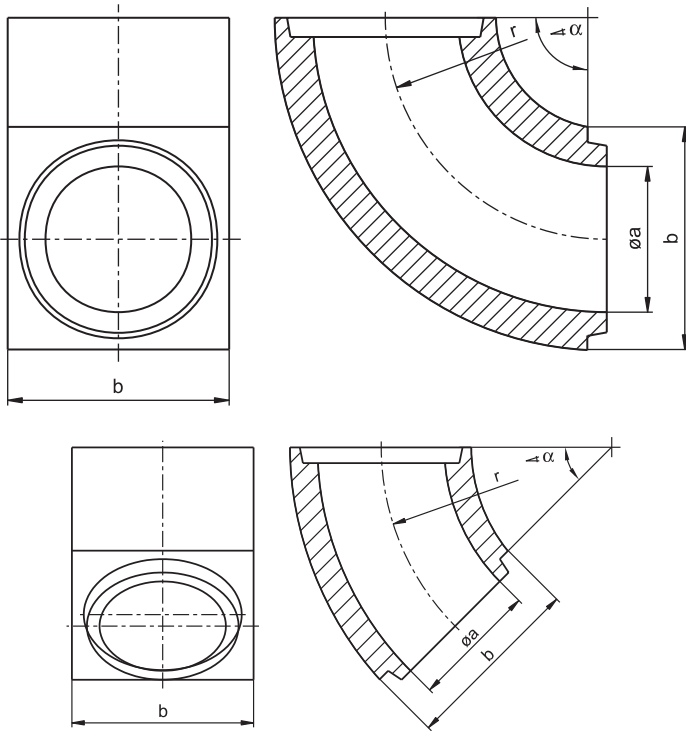
type	a		a1		b		b1		L	
	(mm)	(in)	(mm)	(in)	(mm)	(in)	(mm)	(in)	(mm)	(in)
RK40/30	40	1.57	30	1.18	65	2.56	55	2.17	100	3.94
RK50/40	50	1.97	40	1.57	75	2.95	65	2.56	100	3.94
RK60/40	60	2.36	40	1.57	90	3.54	65	2.56	100	3.94
RK60/50	60	2.36	50	1.97	90	3.54	75	2.95	100	3.94
RK70/50	70	2.76	50	1.97	100	3.94	75	2.95	100	3.94
RK70/60	70	2.76	60	2.36	100	3.94	90	3.54	100	3.94
RK80/60	80	3.15	60	2.36	115	4.53	90	3.54	100	3.94
RK80/70	80	3.15	70	2.76	115	4.53	100	3.94	100	3.94
RK100/80	100	3.94	80	3.15	140	5.51	115	4.53	100	3.94
RK120/100	120	4.72	100	3.94	165	6.50	140	5.51	100	3.94
RK140/120	140	5.51	120	4.72	180	7.09	165	6.50	200	7.87
RK150/120	150	5.91	120	4.72	200	7.87	165	6.50	100	3.94

## EXPANSION TUBE EXPK



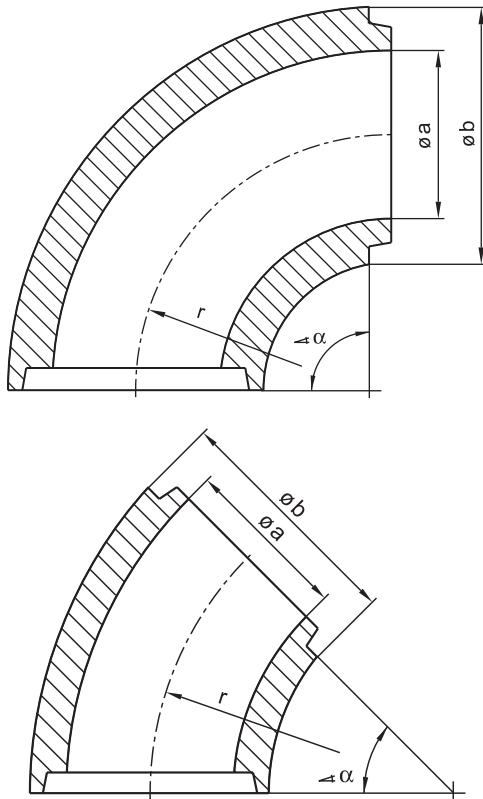
type	a		a1		b		b1		L	
	(mm)	(in)	(mm)	(in)	(mm)	(in)	(mm)	(in)	(mm)	(in)
EXPK30/40	30	1.18	40	1.57	55	2.17	65	2.56	50	1.97
EXPK40/50	40	1.57	50	1.97	65	2.56	75	2.95	50	1.97
EXPK40/60	40	1.57	60	2.36	65	2.56	90	3.54	100	3.94
EXPK50/70	50	1.97	70	2.76	75	2.95	100	3.94	100	3.94
EXPK60/80	60	2.36	80	3.15	90	3.54	115	4.53	100	3.94
EXPK70/80	70	2.76	80	3.15	100	3.94	115	4.53	100	3.94
EXPK80/100	80	3.15	100	3.94	115	4.53	140	5.51	100	3.94
EXPK100/120	100	3.94	120	4.72	140	5.51	165	6.50	100	3.94
EXPK120/140	120	4.72	140	5.51	165	6.50	180	7.09	200	7.87

## ELBOW K (OUTSIDE SQUARE)



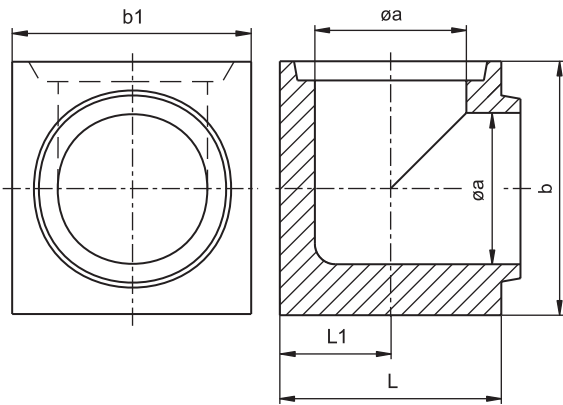
type	$\alpha$ (°)	a		b		r	
		(mm)	(in)	(mm)	(in)	(mm)	(in)
K30/90°	90	30	1.18	55	2.17	80	3.15
K30/45°	45	30	1.18	55	2.17	80	3.15
K40/90°	90	40	1.57	65	2.56	80	3.15
K40/45°	45	40	1.57	65	2.56	80	3.15
K50/90°	90	50	1.97	75	2.95	80	3.15
K50/45°	45	50	1.97	75	2.95	80	3.15
K60/90°	90	60	2.36	90	3.54	80	3.15
K60/45°	45	60	2.36	90	3.54	80	3.15
K70/90°	90	70	2.76	100	3.94	120	4.72
K70/45°	45	70	2.76	100	3.94	120	4.72
K80/90°	90	80	3.15	120	4.72	165	6.50
K80/45°	45	80	3.15	120	4.72	165	6.50
K100/90°	90	100	3.94	140	5.51	165	6.50
K100/45°	45	100	3.94	140	5.51	165	6.50
K120/90°	90	120	4.72	160	6.30	250	9.84
K120/45°	45	120	4.72	160	6.30	240	9.45
K140/45°	45	140	5.51	180	7.09	280	11.02
K150/45°	45	150	5.91	200	7.87	296	11.65

## ELBOW KR (OUTSIDE ROUND)



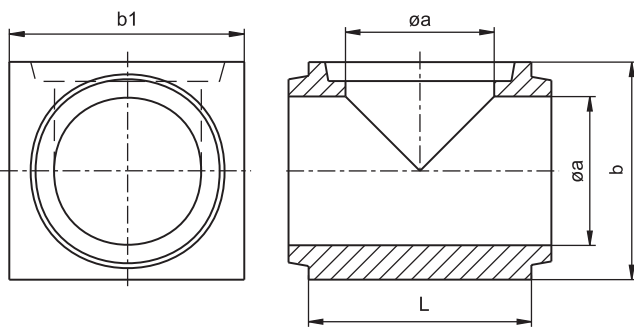
type	$\alpha$ (°)	a		b		r	
		(mm)	(in)	(mm)	(in)	(mm)	(in)
KR30/90°	90	30	1.18	55	2.17	75	2.95
KR40/90°	90	40	1.57	65	2.56	80	3.15
KR50/90°	90	50	1.97	75	2.95	150	5.91
KR60/90°	90	60	2.36	90	3.54	140	5.51
KR60/45°	45	60	2.36	90	3.54	140	5.51
KR70/90°	90	70	2.76	100	3.94	130	5.12
KR80/90°	90	80	3.15	115	4.53	160	6.30
KR80/45°	45	80	3.15	115	4.53	160	6.30
KR100/90°	90	100	3.94	140	5.51	200	7.87
KR100/45°	45	100	3.94	140	5.51	200	7.87
KR120/90°	90	120	4.72	165	6.50	250	9.84
KR120/45°	45	120	4.72	165	6.50	250	9.84

## L-PIECE



type	a		b		b1		L1		L	
	(mm)	(in)	(mm)	(in)	(mm)	(in)	(mm)	(in)	(mm)	(in)
L30	30	1.18	74	2.91	74	2.91	37	1.46	75.5	2.97
L40	40	1.57	74	2.91	74	2.91	37	1.46	75.5	2.97
L50	50	1.97	74	2.91	74	2.91	37	1.46	75.5	2.97
L60	60	2.36	90	3.54	90	3.54	45	1.77	92.5	3.64
L60/100	60	2.36	90	3.54	90	3.54	45	1.77	100	3.94
L70	70	2.76	100	3.94	100	3.94	50	1.97	101.5	4.00
L80	80	3.15	115	4.53	115	4.53	57.5	2.26	117.5	4.63
L80/133	80	3.15	115	4.53	115	4.53	57.5	2.26	133	5.24
L100	100	3.94	140	5.51	140	5.51	72.5	2.85	142.5	5.61
L100/150	100	3.94	140	5.51	140	5.51	72.5	2.85	150	5.91
L120	120	4.72	160	6.30	160	6.30	80	3.15	162.5	6.40
L120/170	120	4.72	160	6.30	160	6.30	80	3.15	170	6.69
L140	140	5.51	220	8.66	200	7.87	110.5	4.35	210	8.27
L150	150	5.91	226	8.90	210	8.27	110.5	4.35	221	8.70

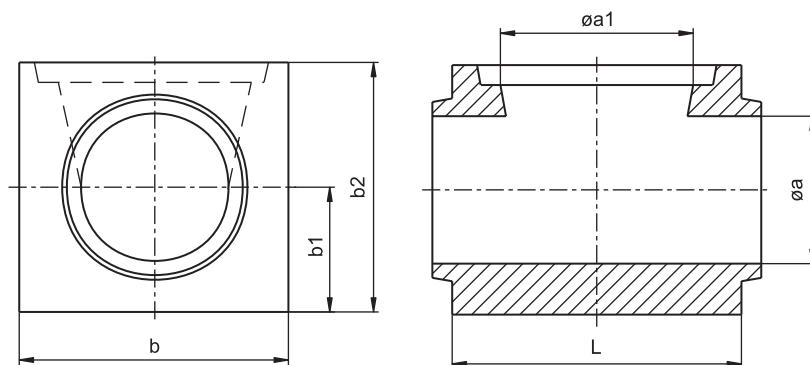
## T-PIECE



type	a		b		b1		L	
	(mm)	(in)	(mm)	(in)	(mm)	(in)	(mm)	(in)
T30	30	1.18	74	2.91	74	2.91	77	3.03
T40	40	1.57	74	2.91	74	2.91	77	3.03
T50	50	1.97	74	2.91	74	2.91	77	3.03
T60	60	2.36	90	3.54	90	3.54	95	3.74
T60/130	60	2.36	90	3.54	90	3.54	130	5.12
T70	70	2.76	100	3.94	100	3.94	103	4.06
T80	80	3.15	115	4.53	115	4.53	120	4.72
T80/160	80	3.15	115	4.53	115	4.53	160	6.30
T100	100	3.94	140	5.51	140	5.51	145	5.71
T100/160	100	3.94	140	5.51	140	5.51	160	6.30
T120	120	4.72	160	6.30	160	6.30	165	6.50
T120/180	120	4.72	160	6.30	160	6.30	180	7.09
T140	140	5.51	220	8.66	200	7.87	210	8.27
T150	150	5.91	226	8.90	210	8.27	221	8.70

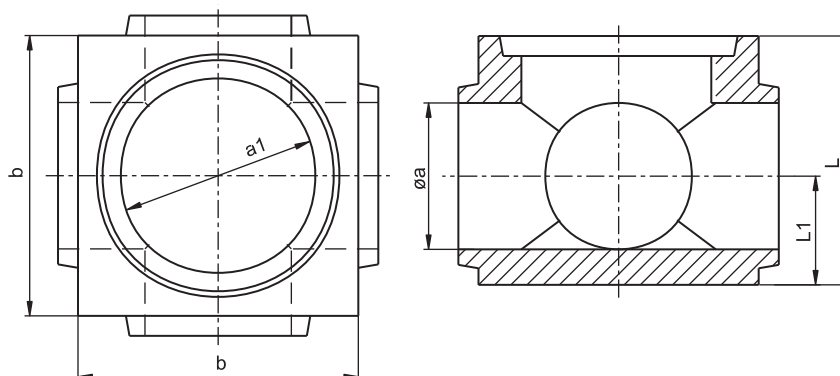


## TX-PIECE



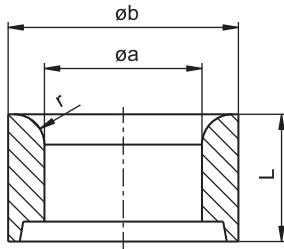
type	a		a1		b		b1		b2		L	
	(mm)	(in)	(mm)	(in)	(mm)	(in)	(mm)	(in)	(mm)	(in)	(mm)	(in)
TX50/40/40	40	1.57	50	1.97	74	2.91	37	1.46	74	2.91	77	3.03
TX70/50/50	50	1.97	70	2.76	100	3.94	37	1.46	87	3.43	105	4.13
TX80/60/60	60	2.36	80	3.15	115	4.53	45	1.77	102.5	4.04	119	4.69
TX80/70/70	70	2.76	80	3.15	115	4.53	50	1.97	107.5	4.23	120	4.72
TX100/80/80	80	3.15	100	3.94	140	5.51	57.5	2.26	127.5	5.02	149	5.87
TX120/100/100	100	3.94	120	4.72	160	6.30	70	2.76	150	5.91	165	6.50
TX140/120/120	120	4.72	140	5.51	180	7.09	80	3.15	170	6.69	185	7.28

## KING BRICK H



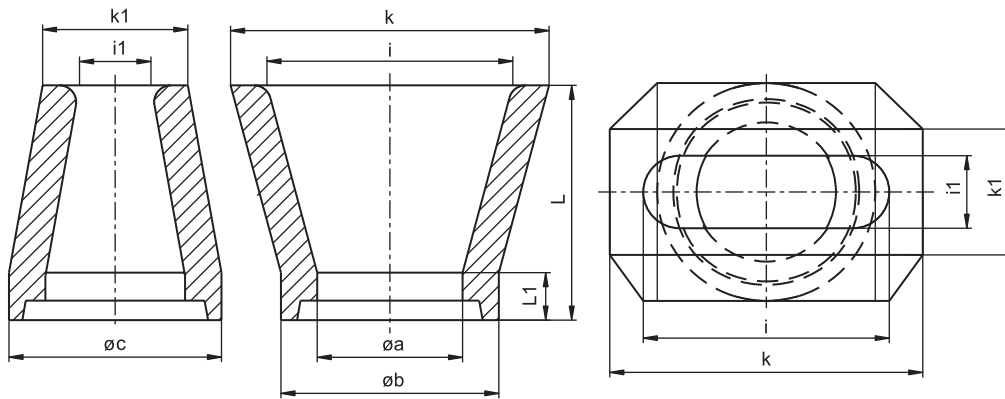
type	a1		a		b		L1		L	
	(mm)	(in)	(mm)	(in)	(mm)	(in)	(mm)	(in)	(mm)	(in)
H60/4x40	60	2.36	40	1.57	90	3.54	35	1.38	80	3.15
H70/4x40	70	2.76	40	1.57	100	3.94	37	1.46	85	3.35
H70/4x50	70	2.76	50	1.97	100	3.94	37	1.46	85	3.35
H80/4x60	80	3.15	60	2.36	115	4.53	45	1.77	102.5	4.04
H100/4x70	100	3.94	70	2.76	140	5.51	50	1.97	123	4.84
H100/4x80	100	3.94	80	3.15	140	5.51	57.5	2.26	125	4.92
H120/4x100	120	4.72	100	3.94	160	6.30	70	2.76	145	5.71

## INGATE TUBE AS



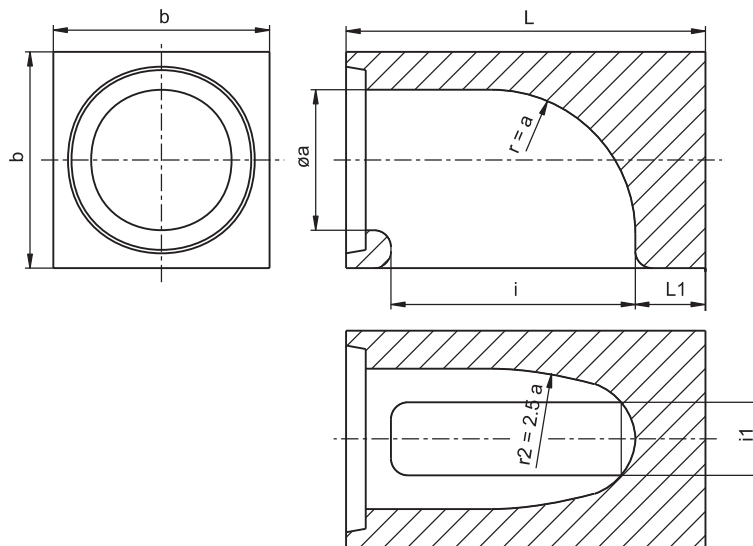
type	a		b		L		r	
	(mm)	(in)	(mm)	(in)	(mm)	(in)	(mm)	(in)
AS30/50	30	1.18	60	2.36	50	1.97	12	0.47
AS40/30	40	1.57	65	2.56	30	1.18	12	0.47
AS40/50	40	1.57	65	2.56	50	1.97	12	0.47
AS50/30	50	1.97	75	2.95	30	1.18	9	0.35
AS50/50	50	1.97	75	2.95	50	1.97	9	0.35
AS60/30	60	2.36	90	3.54	30	1.18	12	0.47
AS60/50	60	2.36	90	3.54	50	1.97	12	0.47
AS70/30	70	2.76	100	3.94	30	1.18	12	0.47
AS70/50	70	2.76	100	3.94	50	1.97	12	0.47
AS80/30	80	3.15	115	4.53	30	1.18	12	0.47
AS80/50	80	3.15	115	4.53	50	1.97	12	0.47
AS100/50	100	3.94	140	5.51	50	1.97	12	0.47
AS100/100	100	3.94	140	5.51	100	3.94	12	0.47
AS120/100	120	4.72	160	6.30	100	3.94	17	0.67
AS140/100	140	5.51	180	7.09	100	3.94	17	0.67

## DUCK FOOT ST



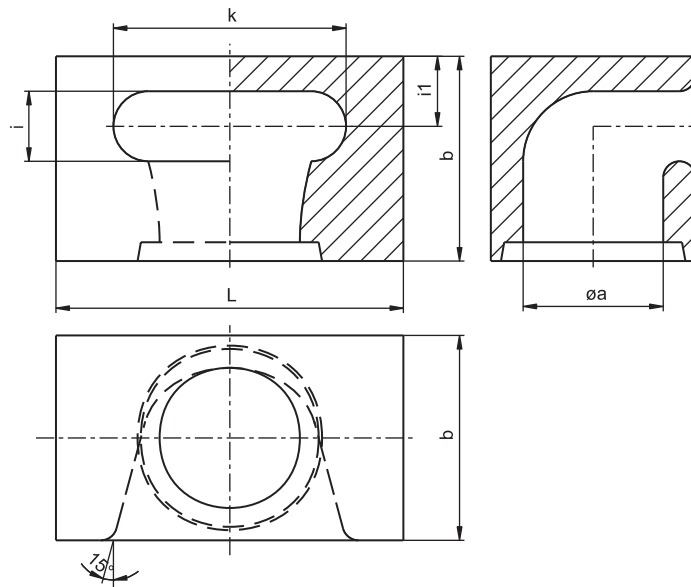
type	a		b		c		i		i1		k		k1		L1		L	
	(mm)	(in)	(mm)	(in)	(mm)	(in)	(mm)	(in)	(mm)	(in)	(mm)	(in)	(mm)	(in)	(mm)	(in)	(mm)	(in)
ST30	30	1.18	54	2.13	54	2.13	104	4.09	10	0.39	120	4.72	30	1.18	-	-	120	4.72
ST40	40	1.57	90	3.54	70	2.76	68	2.68	20	0.79	90	3.54	50	1.97	12	0.47	100	3.94
ST50	50	1.97	75	2.95	75	2.95	85	3.35	25	0.98	110	4.33	45	1.77	20	0.79	100	3.94
ST60	60	2.36	85	3.35	85	3.35	102	4.02	30	1.18	132	5.20	53	2.09	20	0.79	100	3.94
ST70	70	2.76	100	3.94	100	3.94	120	4.72	35	1.38	150	5.91	65	2.56	12	0.47	100	3.94
ST80	80	3.15	117	4.61	117	4.61	136	5.35	40	1.57	175	6.89	70	2.76	20	0.79	100	3.94
ST100	100	3.94	140	5.51	140	5.51	200	7.87	50	1.97	240	9.45	90	3.54	50	1.97	120	4.72
ST120	120	4.72	160	6.30	160	6.30	205	8.07	60	2.36	245	9.65	100	3.94	20	0.79	100	3.94
ST140	140	5.51	180	7.09	180	7.09	240	9.45	70	2.76	280	11.02	110	4.33	20	0.79	100	3.94

## DUCK FOOT ELBOW MAB



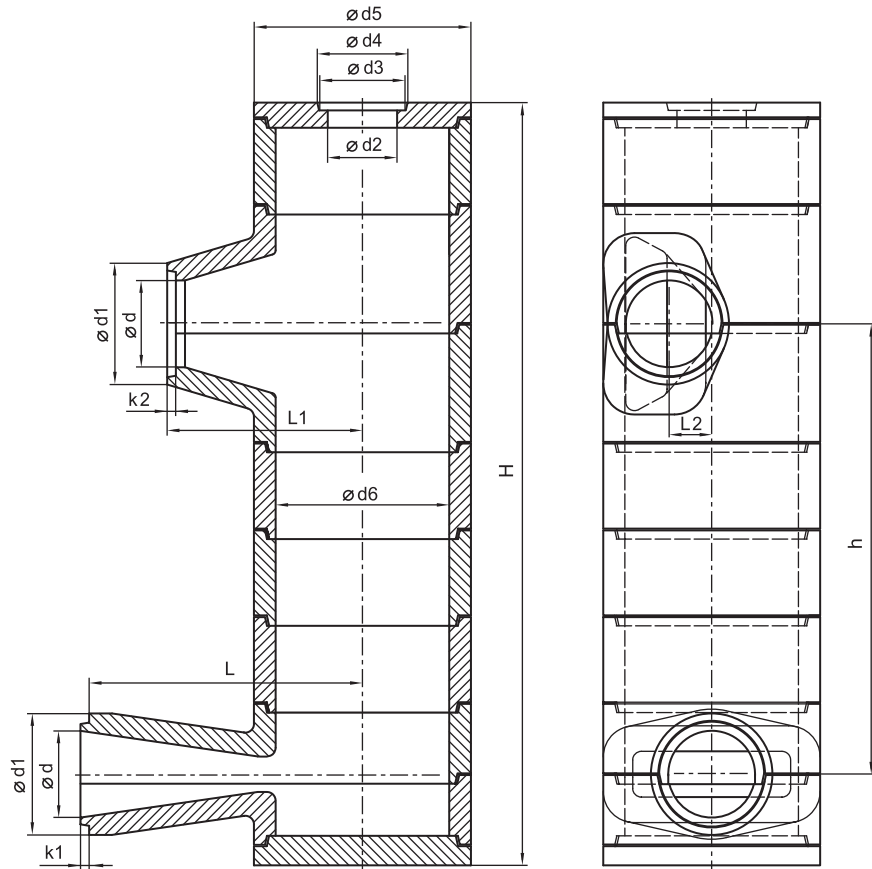
type	a		b		i		i1		L		L1		r	
	(mm)	(in)	(mm)	(in)	(mm)	(in)	(mm)	(in)	(mm)	(in)	(mm)	(in)	(mm)	(in)
MAB80	80	3.15	115	4.53	136	5.35	40	1.57	200	7.87	25	0.98	80	3.15
MAB100	100	3.94	140	5.51	170	6.69	50	1.97	250	9.84	25	0.98	100	3.94
MAB120	120	4.72	160	6.30	205	8.07	60	2.36	290	11.42	30	1.18	120	4.72

## DUCK FOOT CROSSED MABQ



type	a		b		k		i		i1		L	
	(mm)	(in)	(mm)	(in)	(mm)	(in)	(mm)	(in)	(mm)	(in)	(mm)	(in)
MABQ40	40	1.57	70	2.76	68	2.68	20	0.79	25	0.98	98	3.86
MABQ50	50	1.97	75	2.95	85	3.35	25	0.98	25	0.98	110	4.33
MABQ60	60	2.36	90	3.54	102	4.02	30	1.18	30	1.18	132	5.20
MABQ70	70	2.76	100	3.94	120	4.72	35	1.38	32.5	1.28	150	5.91
MABQ80	80	3.15	115	4.53	136	5.35	40	1.57	35	1.38	166	6.54
MABQ100	100	3.94	140	5.51	170	6.69	50	1.97	40	1.57	200	7.87
MABQ120	120	4.72	160	6.30	205	8.07	60	2.36	45	1.77	235	9.25

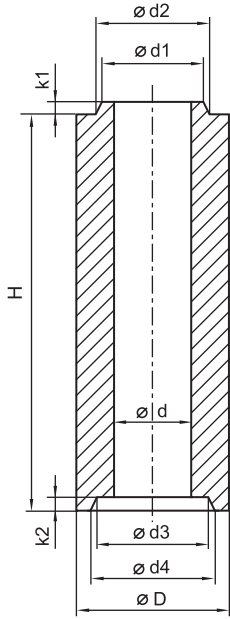
## WHIRL GATE OD



type		d	d1	k1	k2	d2	d3	d4	d5	d6	L	L1	L2	h	H
OD60	(mm)	60	110	9	8	60	73	77	170	120	179	131	34	356	580
	(in)	2.36	4.33	0.35	0.31	2.36	2.87	3.03	6.69	4.72	7.05	5.16	1.34	14.02	22.83
OD80	(mm)	80	120	11	10	70	86	89	210	160	239	175	45	417	710
	(in)	3.15	4.72	0.43	0.39	2.76	3.39	3.50	8.27	6.30	9.41	6.89	1.77	16.42	27.95
OD100	(mm)	100	140	10	9	80	100	104	250	200	315	225	50	519	879
	(in)	3.94	5.51	0.39	0.35	3.15	3.94	4.09	9.84	7.87	12.40	8.86	1.97	20.43	34.61
OD120	(mm)	120	165	10	9	80	100	104	250	200	315	250	42.5	537	919
	(in)	4.72	6.50	0.39	0.35	3.15	3.94	4.09	9.84	7.87	12.40	9.84	1.67	21.14	36.18

# LADLE CLOSING SYSTEM

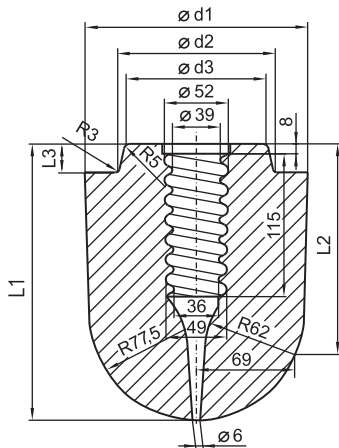
## STOPPER TUBES



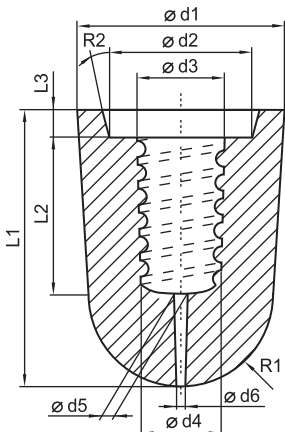
type	d		D		H		d1		d2		d3		d4		k1		k2	
	(mm)	(in)	(mm)	(in)	(mm)	(in)	(mm)	(in)	(mm)	(in)	(mm)	(in)	(mm)	(in)	(mm)	(in)	(mm)	(in)
SR0	40	1.57	90	3.54	270	10.63	60	2.36	66	2.60	62	2.44	69	2.72	10	0.39	12	0.47
SR1	47	1.85	105	4.13	330	12.99	70	2.76	75.3	2.96	72	2.83	76.4	3.01	10	0.39	12	0.47
SR2	47	1.85	120	4.72	330	12.99	70	2.76	81.5	3.21	72	2.83	84	3.31	10	0.39	12	0.47
SR2/D200	47	1.85	120	4.72	200	7.87	70	2.76	81.5	3.21	80	3.15	95	3.74	10	0.39	15	0.59
SR3	47	1.85	140	5.51	330	12.99	70	2.76	81.5	3.21	72	2.83	84	3.31	10	0.39	12	0.47
SR4/1	47	1.85	155	6.10	330	12.99	70	2.76	82	3.23	72	2.83	86	3.39	10	0.39	12	0.47
SR4/2	60	2.36	155	6.10	330	12.99	95	3.74	107	4.21	97	3.82	109	4.29	10	0.39	12	0.47
SR5	60	2.36	170	6.69	330	12.99	95	3.74	107	4.21	97	3.82	111	4.37	10	0.39	12	0.47

Apart from our standard shapes, other lengths can be manufactured by agreement.

## STOPPERS



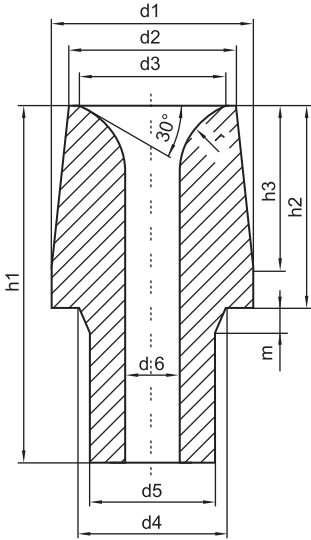
type	L1		L2		L3		d1		d2		d3	
	(mm)	(in)	(mm)	(in)	(mm)	(in)	(mm)	(in)	(mm)	(in)	(mm)	(in)
SP12	198	7.80	160	6.30	18	0.71	160	6.30	106	4.17	100	3.94
SP13	223	8.78	166	6.54	23	0.91	180	7.09	125	4.92	115	4.53



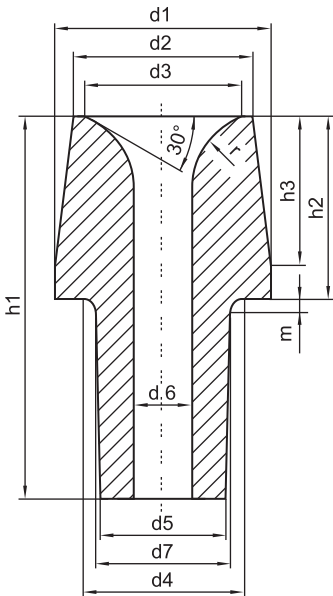
type	L1		L2		L3		d1		d2		d3		d4		d5		d6		R1		R2
	(mm)	(in)	(mm)	(in)	(mm)	(in)	(mm)	(in)	(mm)	(in)	(mm)	(in)	(mm)	(in)	(mm)	(in)	(mm)	(in)			
S0	120	4.72	80	3.15	12	0.47	90	3.54	62	2.44	38	1.50	35	1.38	6	0.24	4	0.16	40	1.57	15°
S1	130	5.12	95	3.74	12	0.47	105	4.13	72	2.83	42	1.65	39	1.54	6	0.24	4	0.16	45	1.77	15°
S2	135	5.31	95	3.74	12	0.47	120	4.72	72	2.83	42	1.65	39	1.54	6	0.24	4	0.16	53	2.09	30°
S3	145	5.71	95	3.74	12	0.47	140	5.51	72	2.83	42	1.65	39	1.54	6	0.24	4	0.16	60	2.36	30°
S4/1	155	6.10	90	3.54	12	0.47	155	6.10	72	2.83	42	1.65	39	1.54	6	0.24	4	0.16	65	2.56	30°
S4/2	155	6.10	90	3.54	12	0.47	155	6.10	97	3.82	42	1.65	39	1.54	6	0.24	4	0.16	65	2.56	30°
S5	170	6.69	90	3.54	12	0.47	170	6.69	97	3.82	42	1.65	39	1.54	6	0.24	4	0.16	68	2.68	30°

# LADLE CLOSING SYSTEM

## NOZZLES



type	d1		d2		d3		d4		d5		d6		h1		h2		h3		m		r	
	(mm)	(in)	(mm)	(in)	(mm)	(in)	(mm)	(in)	(mm)	(in)	(mm)	(in)	(mm)	(in)	(mm)	(in)	(mm)	(in)	(mm)	(in)	(mm)	(in)
0A20	135	5.31	120	4.72	105	4.13	100	3.94	90	3.54	20	0.79	160	6.30	90	3.54	75	2.95	10	0.39	50	1.97
0A25	135	5.31	120	4.72	105	4.13	100	3.94	90	3.54	25	0.98	160	6.30	90	3.54	75	2.95	10	0.39	50	1.97
0A30	135	5.31	120	4.72	105	4.13	100	3.94	90	3.54	30	1.18	160	6.30	90	3.54	75	2.95	10	0.39	50	1.97
0A35	135	5.31	120	4.72	105	4.13	100	3.94	90	3.54	35	1.38	160	6.30	90	3.54	75	2.95	10	0.39	50	1.97
0A40	135	5.31	120	4.72	105	4.13	100	3.94	90	3.54	40	1.57	160	6.30	90	3.54	75	2.95	10	0.39	50	1.97
0A45	135	5.31	120	4.72	105	4.13	100	3.94	90	3.54	45	1.77	160	6.30	90	3.54	75	2.95	10	0.39	50	1.97
0A50	135	5.31	120	4.72	105	4.13	100	3.94	90	3.54	50	1.97	160	6.30	90	3.54	75	2.95	10	0.39	50	1.97
0A60	135	5.31	120	4.72	105	4.13	100	3.94	90	3.54	60	2.36	160	6.30	90	3.54	75	2.95	10	0.39	50	1.97

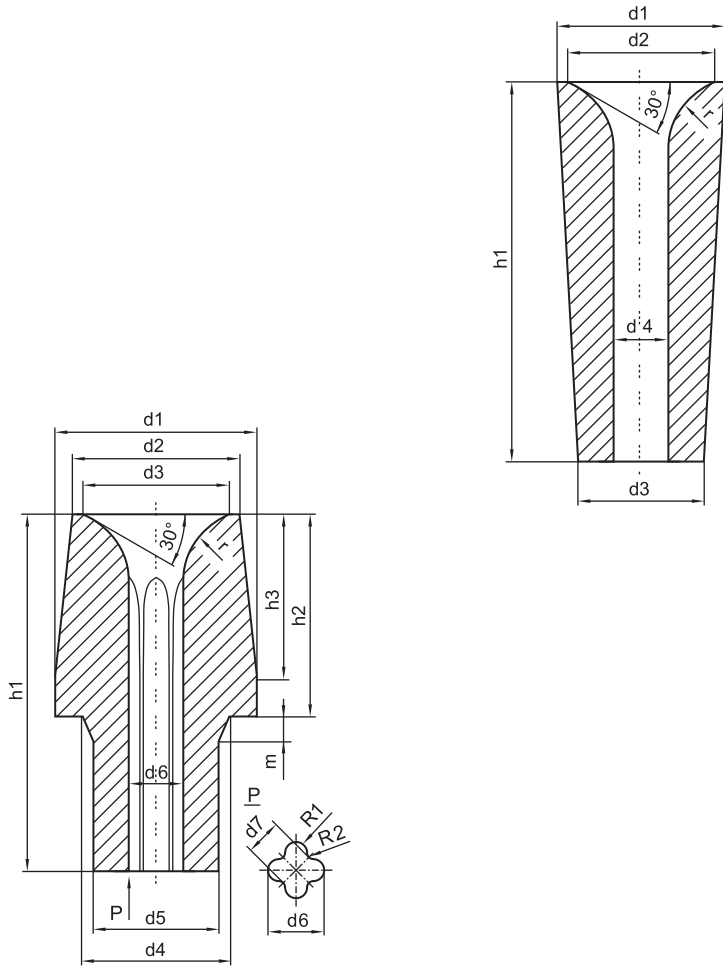


type	d1		d2		d3		d4		d5		d6		d7		h1		h2		h3		m		r	
	(mm)	(in)	(mm)	(in)	(mm)	(in)	(mm)	(in)	(mm)	(in)	(mm)	(in)	(mm)	(in)	(mm)	(in)	(mm)	(in)	(mm)	(in)	(mm)	(in)	(mm)	(in)
1A30	155	6.10	139	5.47	115	4.53	117	4.61	99	3.90	30	1.18	107	4.21	210	8.27	100	3.94	80	3.15	10	0.39	50	1.97
1A35	155	6.10	139	5.47	115	4.53	117	4.61	99	3.90	35	1.38	107	4.21	210	8.27	100	3.94	80	3.15	10	0.39	50	1.97
1A40	155	6.10	139	5.47	115	4.53	117	4.61	99	3.90	40	1.57	107	4.21	210	8.27	100	3.94	80	3.15	10	0.39	50	1.97
1A45	155	6.10	139	5.47	115	4.53	117	4.61	99	3.90	45	1.77	107	4.21	210	8.27	100	3.94	80	3.15	10	0.39	50	1.97
1A50	155	6.10	139	5.47	115	4.53	117	4.61	99	3.90	50	1.97	107	4.21	210	8.27	100	3.94	80	3.15	10	0.39	50	1.97
1A55	155	6.10	139	5.47	115	4.53	117	4.61	99	3.90	55	2.17	107	4.21	210	8.27	100	3.94	80	3.15	10	0.39	50	1.97
1A60	155	6.10	139	5.47	115	4.53	117	4.61	99	3.90	60	2.36	107	4.21	210	8.27	100	3.94	80	3.15	10	0.39	50	1.97
1A70	155	6.10	139	5.47	115	4.53	120	4.72	109	4.29	70	2.76	117	4.61	210	8.27	100	3.94	80	3.15	10	0.39	50	1.97
1A80	155	6.10	139	5.47	115	4.53	120	4.72	109	4.29	80	3.15	117	4.61	210	8.27	100	3.94	80	3.15	10	0.39	50	1.97
2A25	155	6.10	133	5.24	115	4.53	117	4.61	99	3.90	25	0.98	107	4.21	240	9.45	130	5.12	110	4.33	10	0.39	50	1.97
2A30	155	6.10	133	5.24	115	4.53	117	4.61	99	3.90	30	1.18	107	4.21	240	9.45	130	5.12	110	4.33	10	0.39	50	1.97
2A35	155	6.10	133	5.24	115	4.53	117	4.61	99	3.90	35	1.38	107	4.21	240	9.45	130	5.12	110	4.33	10	0.39	50	1.97
2A40	155	6.10	133	5.24	115	4.53	117	4.61	99	3.90	40	1.57	107	4.21	240	9.45	130	5.12	110	4.33	10	0.39	50	1.97
2A45	155	6.10	133	5.24	115	4.53	117	4.61	99	3.90	45	1.77	107	4.21	240	9.45	130	5.12	110	4.33	10	0.39	50	1.97
2A50	155	6.10	133	5.24	115	4.53	117	4.61	99	3.90	50	1.97	107	4.21	240	9.45	130	5.12	110	4.33	10	0.39	50	1.97
2A55	155	6.10	133	5.24	115	4.53	117	4.61	99	3.90	55	2.17	107	4.21	240	9.45	130	5.12	110	4.33	10	0.39	50	1.97
2A60	155	6.10	133	5.24	115	4.53	117	4.61	99	3.90	60	2.36	107	4.21	240	9.45	130	5.12	110	4.33	10	0.39	50	1.97
2A65	155	6.10	133	5.24	115	4.53	117	4.61	99	3.90	65	2.56	107	4.21	240	9.45	130	5.12	110	4.33	10	0.39	50	1.97
2A70	155	6.10	133	5.24	115	4.53	120	4.72	109	4.29	70	2.76	117	4.61	240	9.45	130	5.12	110	4.33	10	0.39	50	1.97
2A80	155	6.10	133	5.24	115	4.53	120	4.72	109	4.29	80	3.15	117	4.61	240	9.45	130	5.12	110	4.33	10	0.39	50	1.97
3A30	180	7.09	153	6.02	135	5.31	140	5.51	115	4.53	30	1.18	123	4.84	275	10.83	155	6.10	135	5.31	20	0.79	50	1.97
3A40	180	7.09	153	6.02	135	5.31	140	5.51	115	4.53	40	1.57	123	4.84	275	10.83	155	6.10	135	5.31	20	0.79	50	1.97
3A50	180	7.09	153	6.02	135	5.31	140	5.51	115	4.53	50	1.97	123	4.84	275	10.83	155	6.10	135	5.31	20	0.79	50	1.97
3A60	180	7.09	153	6.02	135	5.31	140	5.51	115	4.53	60	2.36	123	4.84	275	10.83	155	6.10	135	5.31	20	0.79	50	1.97
3A70	180	7.09	153	6.02	135	5.31	140	5.51	115	4.53	70	2.76	123	4.84	275	10.83	155	6.10	135	5.31	20	0.79	50	1.97
3A80	180	7.09	153	6.02	135	5.31	164	6.46	135	5.31	80	3.15	147	5.79	275	10.83	155	6.10	135	5.31	20	0.79	50	1.97
3A90	180	7.09	153	6.02	135	5.31	164	6.46	135	5.31	90	3.54	147	5.79	275	10.83	155	6.10	135	5.31	20	0.79	50	1.97
3A100	180	7.09	153	6.02	135	5.31	164	6.46	135	5.31	100	3.94	147	5.79	275	10.83	155	6.10	135	5.31	20	0.79	50	1.97



# LADLE CLOSING SYSTEM

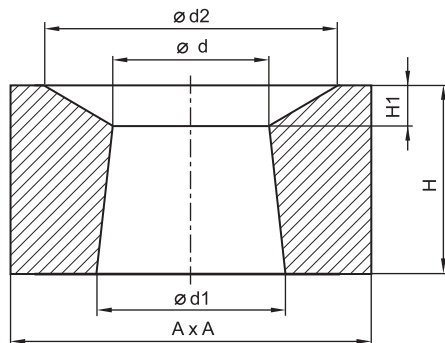
## NOZZLES



type	d1		d2		d3		d4		h1		r	
	(mm)	(in)	(mm)	(in)	(mm)	(in)	(mm)	(in)	(mm)	(in)	(mm)	(in)
6A30	133	5.24	115	4.53	99	3.90	30	1.18	170	6.69	50	1.97
6A40	133	5.24	115	4.53	99	3.90	40	1.57	170	6.69	50	1.97
6A45	133	5.24	115	4.53	99	3.90	45	1.77	170	6.69	50	1.97
6A50	133	5.24	115	4.53	99	3.90	50	1.97	170	6.69	50	1.97
6A60	133	5.24	115	4.53	99	3.90	60	2.36	170	6.69	50	1.97
6A70	133	5.24	115	4.53	99	3.90	70	2.76	170	6.69	50	1.97
7A50	139	5.47	115	4.53	99	3.90	50	1.97	200	7.87	50	1.97
8A80	156	6.14	144	5.67	117	4.61	80	3.15	240	9.45	50	1.97
8A90	156	6.14	144	5.67	117	4.61	90	3.54	240	9.45	50	1.97

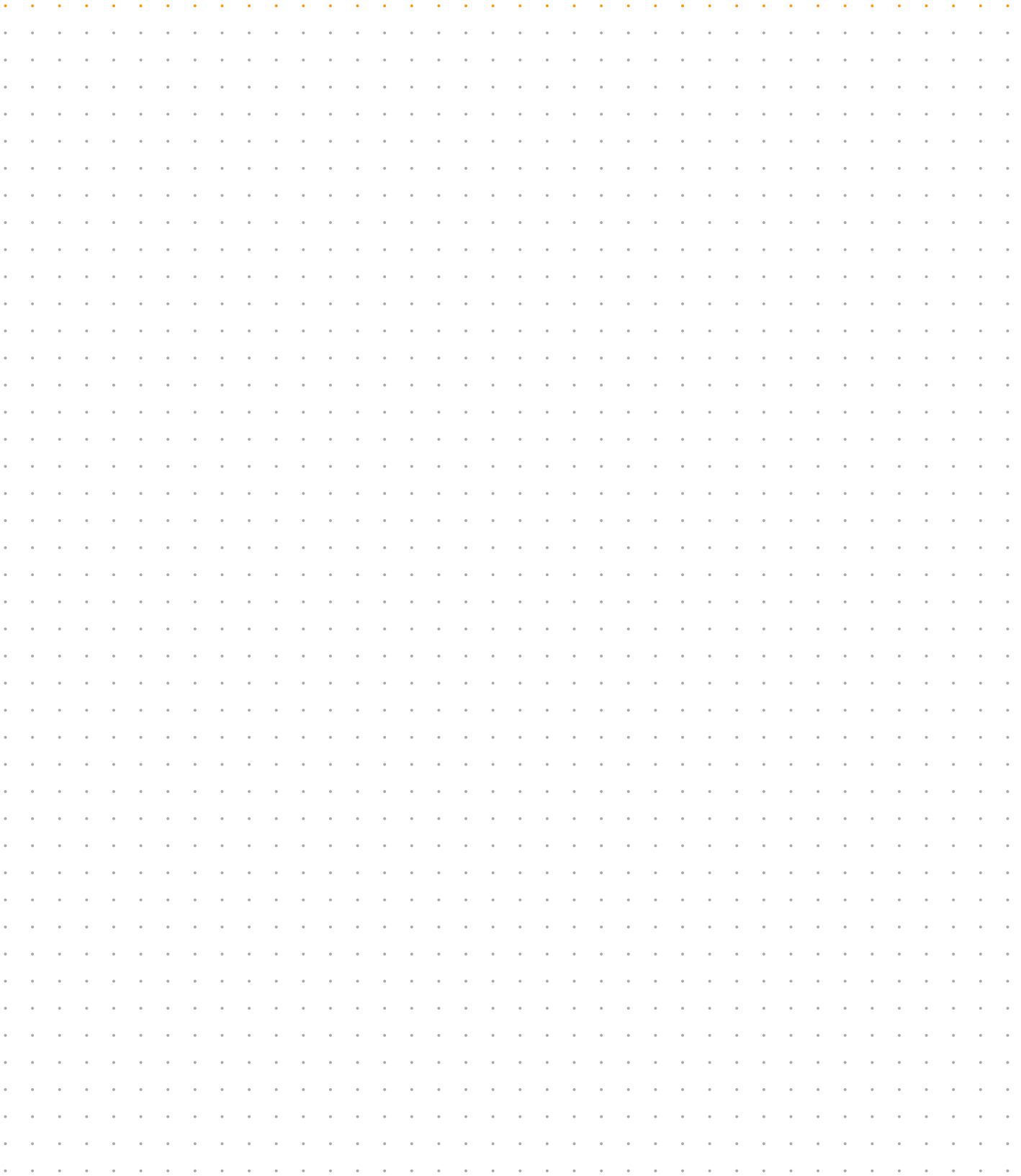
type	d1		d2		d3		d4		d5		d6		d7		h1		h2		h3		m		r		R1		R2	
	(mm)	(in)	(mm)	(in)	(mm)	(in)	(mm)	(in)	(mm)	(in)	(mm)	(in)	(mm)	(in)	(mm)	(in)	(mm)	(in)	(mm)	(in)	(mm)	(in)	(mm)	(in)	(mm)	(in)	(mm)	(in)
0A60K	135	5.31	120	4.72	105	4.13	120	4.72	110	4.33	71	2.80	44	1.73	160	6.30	96	3.78	75	2.95	10	0.39	35	1.38	13.5	0.53	7.5	0.30
1A30K	155	6.10	139	5.47	102	4.02	110	4.33	100	3.94	35	1.38	23	0.91	210	8.27	130	5.12	80	3.15	10	0.39	50	1.97	6.5	0.26	4	0.16
1A40K	155	6.10	139	5.47	102	4.02	110	4.33	100	3.94	46	1.81	29.6	1.17	210	8.27	130	5.12	80	3.15	10	0.39	50	1.97	9	0.35	5	0.20
1A50K	155	6.10	139	5.47	115	4.53	110	4.33	100	3.94	58	2.28	36	1.42	210	8.27	130	5.12	80	3.15	10	0.39	50	1.97	11	0.43	6	0.24
1A60K	155	6.10	139	5.47	115	4.53	110	4.33	100	3.94	71	2.80	44	1.73	210	8.27	130	5.12	80	3.15	10	0.39	50	1.97	13	0.51	7	0.28
3A40K	180	7.09	153	6.02	135	5.31	140	5.51	119	4.69	46	1.81	29.6	1.17	275	10.83	155	6.10	135	5.31	20	0.79	50	1.97	9	0.35	5	0.20
3A60K	180	7.09	153	6.02	135	5.31	140	5.51	119	4.69	71	2.80	44	1.73	275	10.83	155	6.10	135	5.31	20	0.79	53	2.09	13	0.51	7	0.28

## POCKET BLOCKS



type	d		d1		d2		A		H		H1	
	(mm)	(in)	(mm)	(in)	(mm)	(in)	(mm)	(in)	(mm)	(in)	(mm)	(in)
L0	125	4.92	143	5.63	220	8.66	250	9.84	107	4.21	17	0.67
L1	149	5.87	169	6.65	260	10.24	320	12.60	123	4.84	23	0.91
L2	143	5.63	169	6.65	260	10.24	320	12.60	165	6.50	35	1.38
L3	163	6.42	194	7.64	300	11.81	360	14.17	190	7.48	35	1.38
L6	143	5.63	123	4.84	260	10.24	320	12.60	123	4.84	23	0.91

A large grid of small dots for taking notes, consisting of 25 columns and 30 rows.



## ABBREVIATIONS

MN	With female
OF	Without female
ONF	Without female and male

SEEIF Ceramic, a.s. produces and supplies traditional refractory products and ceramic materials, incl. services and consultancy concerning their use in the customers' plants.



Product line:

Ceramic gating system

Fireclay, high-alumina and special refractory ceramic bricks for ingot castings

Graphite and corundum stoppers and nozzles for ladle closing systems

Thermal insulating shapes

Refractory masses

## TECHNICAL CERAMICS OF THE 3rd MILLENNIUM



PLANT 1 MKZ FIRECLAY FACTORY  
WERK 1 MKZ SCHAMOTTEFABRIK  
ЗАВОД 1 МКЗ ШАМОТНЫЙ ЗАВОД  
ZÁVOD 1 MKZ ŠAMOTKA

PLANT 2 MKZ REFRACTORY MASSES  
WERK 2 MKZ FEUERFESTE MASSEN  
ЗАВОД 2 МКЗ ЖАРОСТОЙКИЕ МАТЕРИАЛЫ  
ZÁVOD 2 MKZ ŽÁROHMOTY

Spešovská 243  
679 02 Rájec-Jestřebí



PLANT 3 KERAVIT  
WERK 3 KERAVIT  
ЗАВОД 3 КЕРАВИТ  
ZÁVOD 3 KERAVIT

Kotěřova 3  
706 02 Ostrava-Vítkovice



PLANT 5 MKZ SVITAVY  
WERK 5 MKZ SVITAVY  
ЗАВОД 5 МКЗ СВИТАВЫ  
ZÁVOD 5 MKZ SVITAVY

Milady Horákové 38  
568 02 Svitavy

April 2017  
GATING SYSTEM LINE R, V

SEEIF Ceramic, a.s.  
Spešovská 243  
679 02 Rájec-Jestřebí  
Czech Republic

phone/tel.: +420 516 526 111  
fax: +420 516 432 241  
e-mail: info@ceramic.cz



REFRACTORIES  
FEUERFESTE WERKSTOFFE  
ОГНЕУПОРЫ  
ŽÁROVZDORNÉ MATERIÁLY



SEEIF  
Ceramic, a.s.

