



Flawless aesthetics, with exceptional
thermal performance



☎ 01233 239674
🌐 www.everbrightwindows.co.uk
📍 Unit 3, Creative Enterprise Quarter,
Javelin Way, Ashford TN24 8FN

Prestige
LIFT & SLIDE PATIO DOOR





Make a room with a view

The perfect way to frame a view, Prestige Lift & Slide Patio Doors provide the ideal way to create a feeling of space within your home. Letting you enjoy the great outdoors, whatever the weather.

These high quality, UK made, aluminium doors are a fantastic investment that can transform your home into a haven of comfort and style. Helping integrate your outside space with your home.

The Prestige Lift & Slide Patio combines flawless minimalism with exceptional thermal performance and can truly make a 'room with a view' with their super slim sightlines and aesthetics.

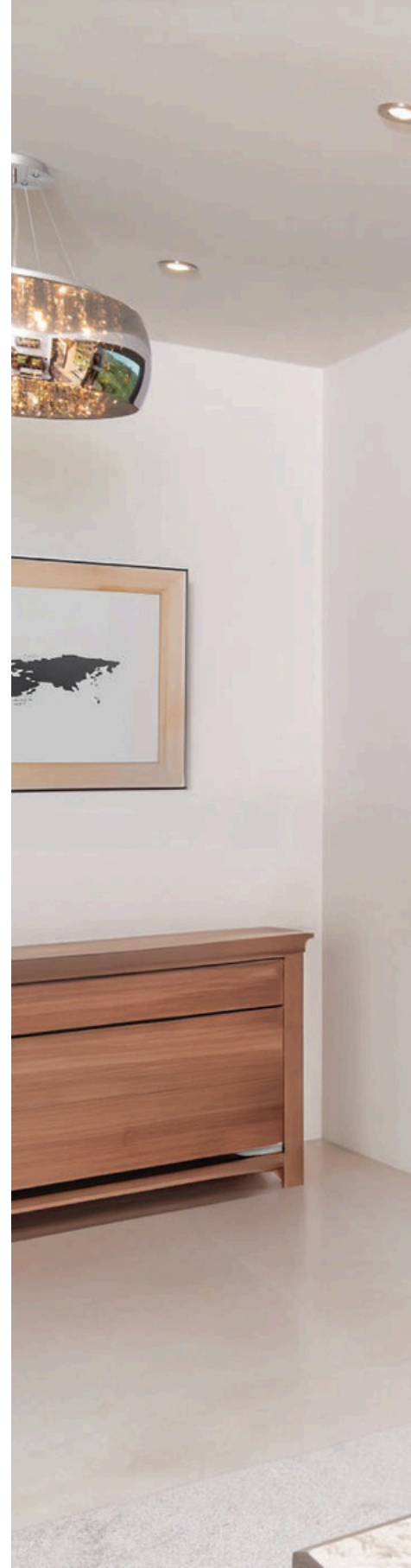
Embrace the outdoors, indoors

The Prestige Lift & Slide Patio is the ideal replacement door or statement panoramic centrepiece for a new build or extension project. Not only does it exude the timeless feelings of quality, style and durability of aluminium, but it also embodies the modern desire for sustainable products, that help conserve energy, through innovative design.


The perfect way to maximize breathtaking views, while providing easy access to your outside living space.



Available in stepped and contemporary styles, the Prestige Lift & Slide Patio offers versatile aesthetics.







Created with a keen eye for minimalism, these doors feature sleek profiles that maximize the expanse of glass, offering unobstructed views of the great outdoors.

Stylish, sleek
elegance,
up to 31%
slimmer



With incredibly slim sightlines of just 106mm*, our patios allow you to create rooms that truly embrace the beauty of their surroundings and bathe interiors in light.

To achieve this remarkable slimness, our designers meticulously engineered our patio doors to be as slender as possible, without compromising their exceptional thermal performance.

Prestige Lift & Slide Patios provide you with a choice of interlocks (the point where the sashes meet).

Either our standard 80mm width option, or an ultra-slim 52mm interlock† for the ultimate minimalist aesthetic.

These precision engineered doors also perfectly match the rest of the Sheerline range so you can achieve a beautifully consistent look across your home.

*106mm refers to frame and sash, 31% slimmer than mainstream competitor patios. †Option only available on certain door styles.

Exceptional thermal performance as standard

Our aluminium range incorporates proprietary Thermlock® multi-chamber thermal technology, helping keep you insulated against the worst of the UK's changeable weather.

Thermlock® works in conjunction with high performance glazing to create class leading thermal performance. Far superior to traditional polyamide solutions.

This increased thermal efficiency helps reduce energy bills, while also helping keep your home snug and warm.

Sheerline combines the sleek aesthetics of aluminium with class leading thermal performance.

1.4 U-value

W/(m²K)
Double glazed

Thermal transmittance, also known as a U-value, measures the rate of transfer of heat in building elements. The better-insulated your patio door is, the lower the U-value will be.

1.0 U-value

W/(m²K)
Triple glazed

Available with up to 44mm triple glazing for the ultimate thermal performance. Triple glazing can also provide exceptional acoustic dampening to block out unwanted noise.

**Subject to glass specification, 1.1 U-value for 36mm triple glazed stepped sashes.*

Insulated with
THERMLOCKI[®]
technology

Our range is future-proofed
against stringent building
regulation changes to keep
your mind at rest.

Every Sheerline product
is Part L compliant as
standard.



Secured by Design



Official Police Security Initiative

For added peace of mind choose our laminate glass upgrade for secured by design accreditation* - the official UK Police initiative 'designing out crime' through physical security.



**Requiring a minimum of 6.8mm laminated glass*



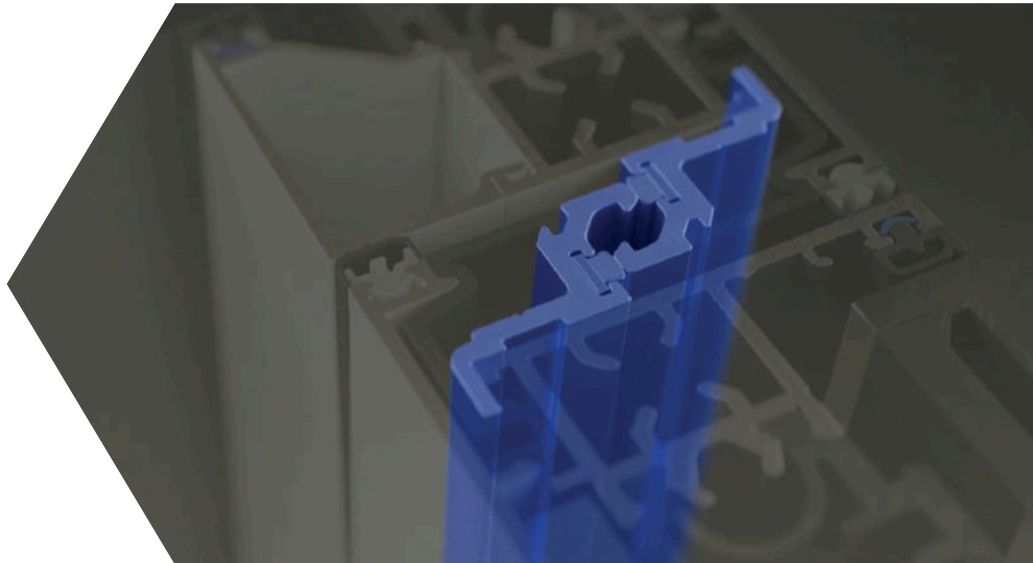
Outstanding security as standard

Prestige Lift & Slide Patio Doors, proudly bear PAS24 accreditation as standard, offering extra peace of mind and helping keep your home secure.

Advanced security features include high-security interlocks that tightly bind sashes together when attacked, helping keep potential intruders out.

Additionally, our innovative retracting hook-locks sit flush when retracted, eliminating any protruding locking pegs on jambs.

This not only enhances the aesthetics of the door but also eliminates the risk of clothes getting caught or snagged when your patio is open.



Effortless operation

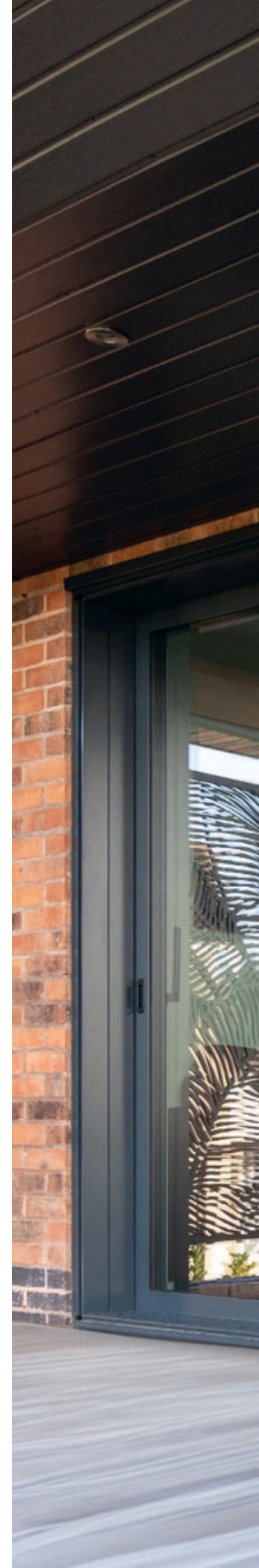
Our lift & slide patio doors glide smoothly, thanks to their specially engineered stainless-steel tracks and high-performance running gear.

You can choose between dual and triple track options, with various configurations of fixed and sliding panes to meet your exact requirements.

Additionally, with the flexibility to select two, three, or four panes it's easy to create the perfect connection to your outdoor space.

To ensure the elements are kept safely outside, whatever configuration you choose, your doors will incorporate our patented sealing system, ensuring weathertight protection against the harshest UK weather conditions.

Doors are available in widths up to 6.5m by 2.5m high and support sashes weighing up to 400 kilograms.

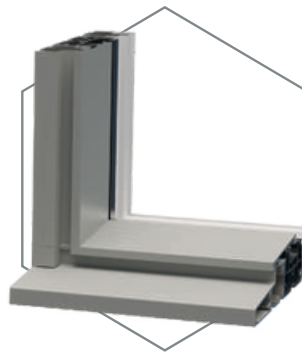




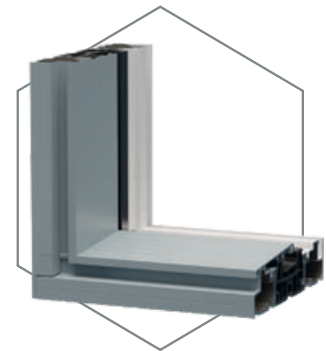
Three threshold options

With three main threshold options, it's easy to integrate Prestige Lift & Slide Doors into your project – Creating the ideal balance between weathertightness

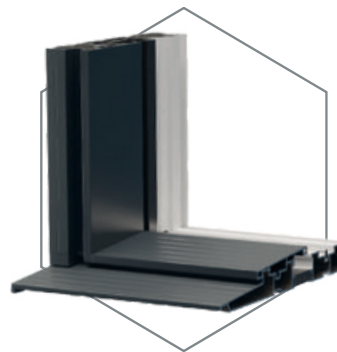
and an uninterrupted flow between spaces.



Standard
Outer Frame with
Clip-on Cill Nose
(38mm high)*



Standard
Outer Frame
(38mm high)*



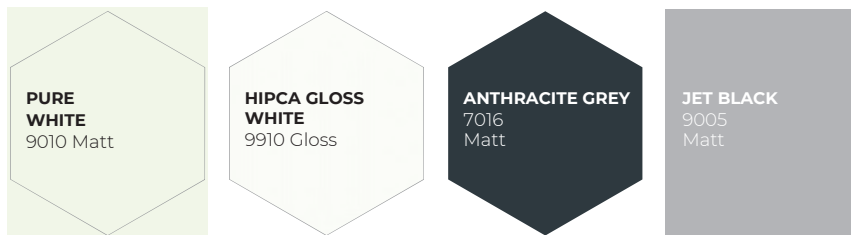
Low Threshold
with Ramp
(25mm high) tested to the
requirements of Part M.
Only available on double track designs

*Allow an additional 12mm if using optional drainage tray.

Available in a wide range of colours and finishes to suit every home

Our Prestige Lift & Slide Patio is available in twelve powder coated colours, with the option of choosing a different colour for the interior to help you find a look that is right for your property. With three metallic effect finishes available in our distinctive Paragon range for the ultimate durable and stylish finish.

TRADITIONAL COLOURS



CHARACTER PREMIUM COLOURS



PARAGON METALLIC EFFECT



BESPOKE



Please note; due to the nature of the manufacturing process and the differences in the methods used to represent these colours in print we cannot guarantee an exact colour match with the colours shown. The colour references are also provided as a guide only



Created from one of the most sustainable materials on the planet

Manufactured from the most recycled and abundant metal in the Earth's crust and produced at our energy efficient UK based aluminium extrusion facility. All Sheerline products are made in the most sustainable way possible. Our state-of-the-art, energy efficient SMS HYBREX press also uses up to 55% less energy compared to traditional

aluminium presses. The design of Sheerline systems also vastly reduce fabrication waste, minimising the unnecessary consumption of raw material which helps reduce your door's carbon footprint. This coupled to the high level of energy efficiency built into every Sheerline product helps build towards a greener future for all.



75%

Did you know 75% of the aluminium produced is still in use, thanks to its durability and highly efficient recycling processes.



Proudly designed and manufactured in the heart of the UK

We are on a mission to transform what customers expect from aluminium windows and doors. From design and testing, to the manufacture of every major component at our state-of-the-art facilities, we are passionate about every element that goes into producing Sheerline window and door systems.

Delivering products that operate, perform and look exceptional, keeping you warm and secure for many years to come.

