



Everbright

WINDOWS & DOORS

Love your home... Love Liniar*





Cream casement windows with French door

Designed for saving energy

When you choose Liniar, not only are you assured of a high quality product, you'll be taking advantage of the most technically advanced range available in the UK.

PVCu windows may look similar – but it's the bits you don't see, tucked away inside the frames, that make a huge difference to how the windows perform, and how much energy they save – or waste – over their life cycle.

First introduced to the UK in the early 1980s, PVCu (or UPVC as they were known then) windows were unattractive and bulky – and only available in white. Being more cost effective to produce than alternative materials, they were soon used extensively in new buildings all over the country.

Launched in 2008, Liniar frames are not only beautifully slim and available in a huge choice of styles, colours and finishes – they contain a huge number of hidden features to make them the most energy efficient frames you can choose.



Safe and secure

Linlar windows are fitted with high security multi-point locking as standard and are independently tested to the requirements of PAS 24 and Secured by Design.



Energy Efficient

With unique multi-chambered PVCu profile, Linlar windows can achieve the very latest A++ energy rating, helping retain heat within your property.



Fully tested

Linlar products are put through exhaustive testing processes to ensure they are robust, durable and built to last.



Eco-friendly

Each PVCu product in the Linlar range is made from lead-free, energy efficient, recyclable PVCu, making it a sustainable choice.



Made in Britain

The Linlar range is designed, tooled, extruded and tested at an award-winning, purpose-built, state-of-the-art factory in Derbyshire.



Low maintenance

Linlar products won't rot, rust, or require painting - just an occasional clean with warm soapy water, even with our foiled colours.



About Liniar

The most up-to-date system on the market.

Liniar was created by bringing together some of the most knowledgeable and forward thinking designers and experts in the window industry – with more than 500 years of experience between them.

Liniar is an award-winning Derbyshire firm, whose parent company Quanex Building products is listed on the New York Stock Exchange.

Continued investment in infrastructure, technology, machinery and a great team of people has helped Liniar to become one of the UK's market leading window systems with a customer base of specialist fabricators, all creating beautiful products to supply to installers and homeowners.

The design team behind the Liniar brand is constantly pushing the boundaries of product innovation, with a focus on research, many new products in development and a string of patents and Registered Designs. As a result, Liniar has developed a well-earned reputation for innovation.

By being agile and responsive to customer feedback, Liniar has developed an impressive portfolio of products. The range spans not only windows, doors and roofs, but lots of clever design ideas, such as bi-folding doors to give your home that real 'wow' factor. Liniar's range of trims, fascias and soffits also ensures a perfect finish with fully matching colours, and a recycled outdoor range provides matching, low maintenance products for landscapers, developers and homeowners.



Focus on Sustainability

Liniar is committed to the protection of the planet for future generations. That's why Liniar has worked for nearly three decades to ensure no PVCu waste is sent to landfill. Liniar creates fully or partially recycled products, designs energy-efficient and eco-friendly products and continually works towards the smallest carbon footprint possible. Its window range is the only UK system that, when recycled, is 100% lead-free.

The environmental friendliness and energy efficiency of Liniar's windows, doors and conservatories set the standard for the rest of the industry. Not only can Liniar products save homeowners money on their energy bills, they're also manufactured using the smallest carbon footprint possible.

Liniar works alongside the Environment Agency to shrink its carbon footprint. So far during this agreement it has surpassed environmental targets by 63% and achieved ISO14001 accreditation for excellence in Environmental Management.

Liniar's Sustainability Focus:

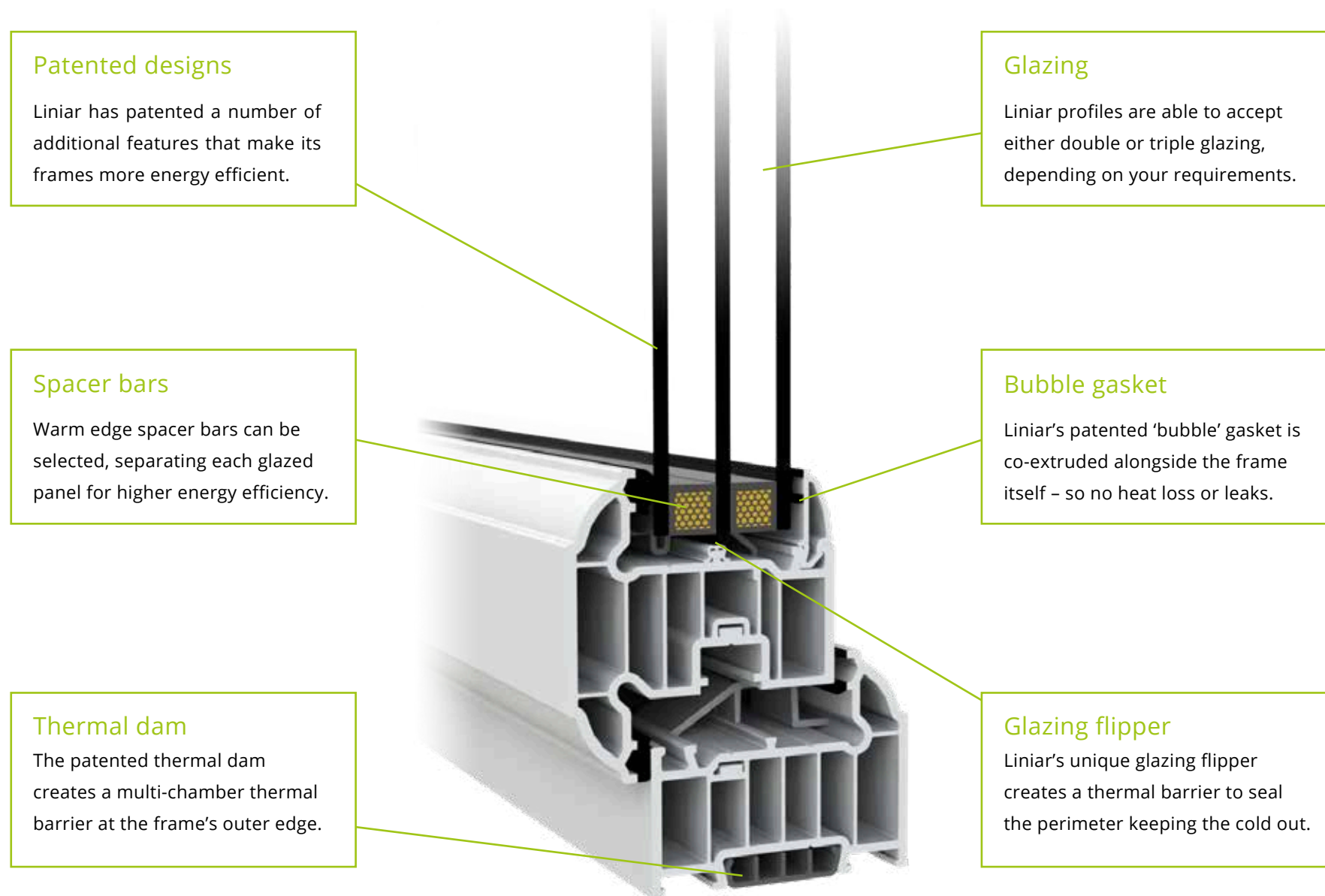
- Operational waste-neutral production facility.
- Recycling scrap from production into new fully or partially-recycled outdoor products since 1994.
- Underground water recycling facility recycles nearly 4 billion litres of water per year.
- Incandescent bulbs have been replaced with low-energy LED bulbs across the entire site.
- Heating across the site requires no fossil fuels or electricity.
- Constant investment in energy-efficient machinery, methods and transportation.



How Liniar PVCu profiles work

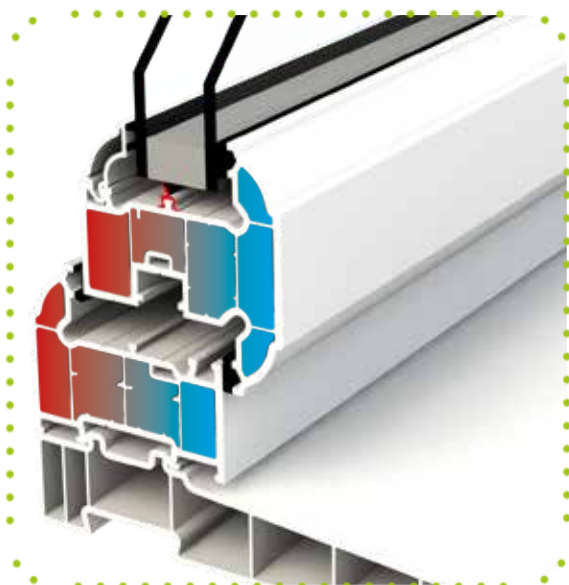
PVCu is a natural insulator, so it's one of the most energy efficient materials for a window frame. Inside a Liniar frame, multiple chambers act as barriers, making it difficult for the heat inside your home to be transferred through and escape outside.

The drawings opposite show the inside of a Liniar standard, an EnergyPlus frame and an EnergyPlus90 frame, the colours representing heat and cold – with red symbolising the heat from your home and blue the cold air coming from the outside.

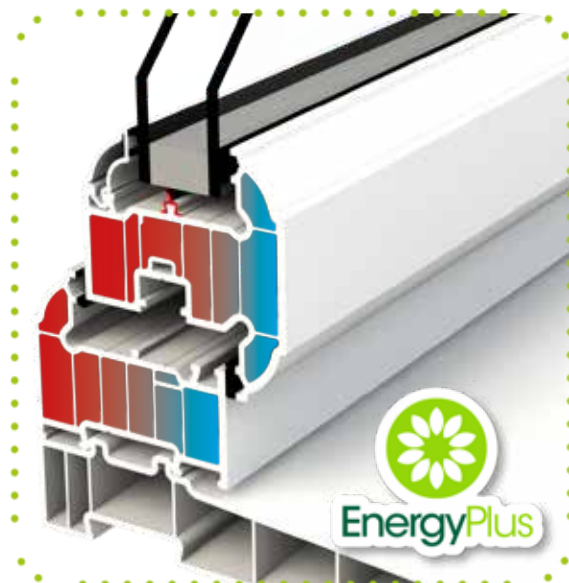


The result is a supremely energy efficient glazed product, capable of achieving the highest possible Windows Energy Rating of A++ or a U-value as low as 0.5 W/m²K with quad glazing*. Ask your Liniar fabricator or installer for more information, or use the Liniar WER Calculator at www.liniar.co.uk/WER-calculator to find out all the different options available.

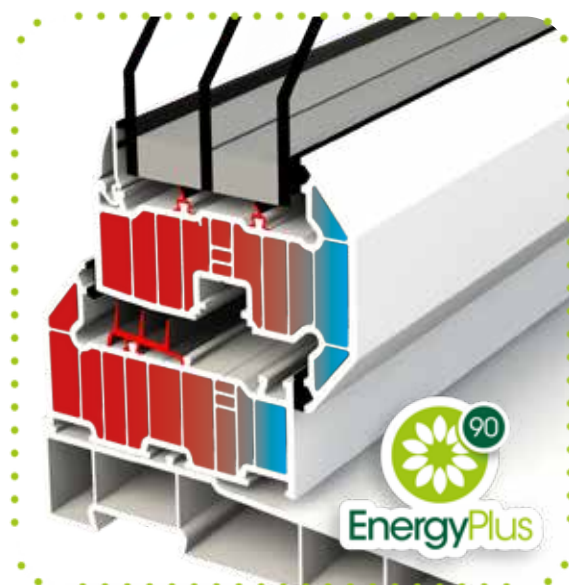
*EnergyPlus90 rating



Standard



EnergyPlus



EnergyPlus90

Profile comparison

Why pay to heat your home and lose up to 20% of the heat through your windows and doors?

Linar PVCu window and door profiles are available in three formats – all designed to be extremely energy efficient.

- Standard – 70mm front to back, 4 symmetrical chambers, achieving U-values as low as 1.2 W/m²K
- EnergyPlus – 70mm front to back, 6 symmetrical chambers, achieving U-values as low as 0.8 W/m²K
- EnergyPlus90 – 90mm front to back, 9 symmetrical chambers, achieving U-values as low as 0.6 W/m²K

Both standard and EnergyPlus profiles are completely interchangeable and look exactly the same from the exterior – the only difference you'll see as your windows are fitted is the protective tape, which will feature the EnergyPlus logo if you've ordered 6-chamber windows.

Linar standard profile offers a cost effective option with energy efficiency that still beats most similar types of PVCu window.

Linar EnergyPlus profiles can achieve an A++ rating without the need for expensive low-iron glass on the outer pane of glass or the need for costly thermal inserts, making it a cost effective choice overall.

Launched in 2018, EnergyPlus90 is a 90mm window system that looks and acts as a 70mm system - but which is the first PVCu window in the UK to achieve the exacting Passive House standard, for the highest possible thermal efficiency.

Both standard and EnergyPlus profiles are available in either chamfered (bevelled) or sculptured (curved) styles, depending on the product, whilst EnergyPlus90 comes in chamfered only. Please see individual product pages for more details.



Secured by Design

Liniar Secured by Design products are designed with exceptional security features and confirmed as meeting the requirements of the Association of Chief Police Officers.



PAS 24:2012

The British Standard for enhanced security performance, PAS 24 testing also includes testing for air and water tightness and wind loading to BS 6375.



BBA Approval

Liniar's whole window system is BBA (British Board of Agrément) Approved, verifying an impartial and unbiased review on the performance of products.



BS EN 12608:2003

Holding the British Standard for quality, consistency and performance required for PVCu extruded hollow profiles, Liniar's systems are tested to ensure continued compliance.



BuildCheck

An independent testing house conforming to British standards and accredited by UKAS and the BFRC. Liniar's ModLok™ bi-fold door was first to pass its Folding/Sliding Door Scheme.



BS EN ISO 9001 (Quality)

Liniar's factory has BS EN ISO 9001:2008 accreditation for quality management systems - proving its strong customer focus and continuous improvement cycle.



BS EN 14001 (Environmental)

Liniar has been certified for the latest BSI (British Standards Institute) ISO 14001 Environmental Management System (EMS), thanks to a continued focus on sustainability.



BS EN 6375

Parts 1, 2 & 3 relate to the requirements of windows and doors, including weather testing inclusive of wind loading, functionality testing and cyclic testing.



CORGI Fenestration

The most recognised consumer mark in history, Liniar was the first systems company to achieve registration to the scheme - assuring the highest quality products, processes and business practices.

Before choosing windows and doors ensure they comply with the latest building regulations. See www.liniar.co.uk/building-regulations for more information.



The Liniar window range

Don't compromise between security and energy efficiency – choose Liniar.

The Liniar 70mm window system was created from scratch, building in innovative design features intended to reshape the accepted standards for PVCu windows.

Multi-chambered frame technology means Liniar windows can achieve the highest energy ratings of A++ whilst at the same time attaining Secured by Design status. Standard 4-chamber, EnergyPlus 6-chamber and EnergyPlus90 9-chamber frames all deliver supreme thermal efficiency.

Liniar window styles are available in a choice of sculptured (curved) or chamfered (bevelled) frames and can be manufactured with either 28mm double or 36mm triple glazing. A huge range of colours and finishes means you can personalise your windows to your own requirements.

Why choose Liniar windows?

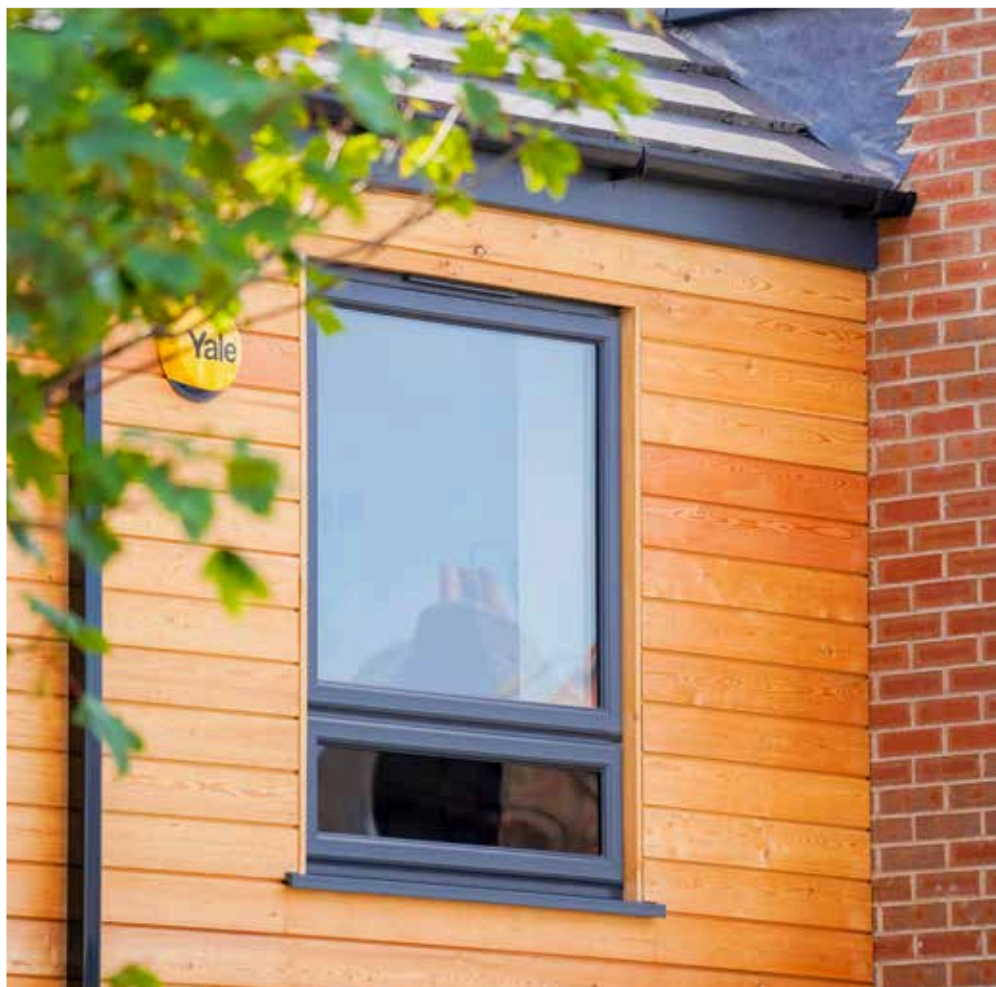
Designed from scratch to achieve the pinnacle of thermal performance.

Engineered with built-in security features and fully tested.

Backed with quality assurance and accreditation for peace of mind.

100% lead-free, fully recyclable and fully guaranteed.

For more information visit www.liniar.co.uk/windows



Casement windows

Still the most popular choice for homes all over the UK, Liniar casement windows offer total versatility and either classic or contemporary style.

This traditional British window style offers slim sight lines to let in maximum light. It's available in a wide choice of configurations, including top or side hung windows, so you can personalise each window to your requirements. Adding moulded sash horns gives Liniar casement windows the appearance of traditional vertical sliders – or for additional character you can add astragal or Georgian bars to your windows.

You could also add arched tops, coloured or bevelled glass, and there's a wide range of colours and finishes to choose from. With matching cills and either traditional or contemporary handles, the choices are almost endless. Liniar's patented bubble gasket is used in all products and delivers a continuous seal – even in the corners – resulting in draught-free, weather proof and leak-free windows, all with high security features.

Your installer will be able to advise you on the options available, or visit the Liniar website at <http://www.liniar.co.uk/windows/casement> to see the stocked colours and find out more about Liniar casement windows.



Options at a glance:

- Choose from standard, EnergyPlus or EnergyPlus90 frames
- Sculptured (curved) or chamfered (bevelled)
- Add Georgian bars and/or patterned glass
- Wide choice of coloured and foiled frames
- Wide choice of handle and hinge options.



White mock horn sash casement windows



Flush sash windows

Sleek, flush and thermally efficient
– Liniar's original flush sash range delivers a window with the realism of a traditional timber window.

For many property owners, PVCu windows aren't an option due to planning or environmental restrictions. The Liniar flush sash range changes the rules, delivering realistic traditional-looking windows combined with 21st Century thermal benefits. As the name suggests, the sash fits flush into the frame on all external faces of the window, giving it a distinctive, sleek appearance that's also ideal for more contemporary properties.

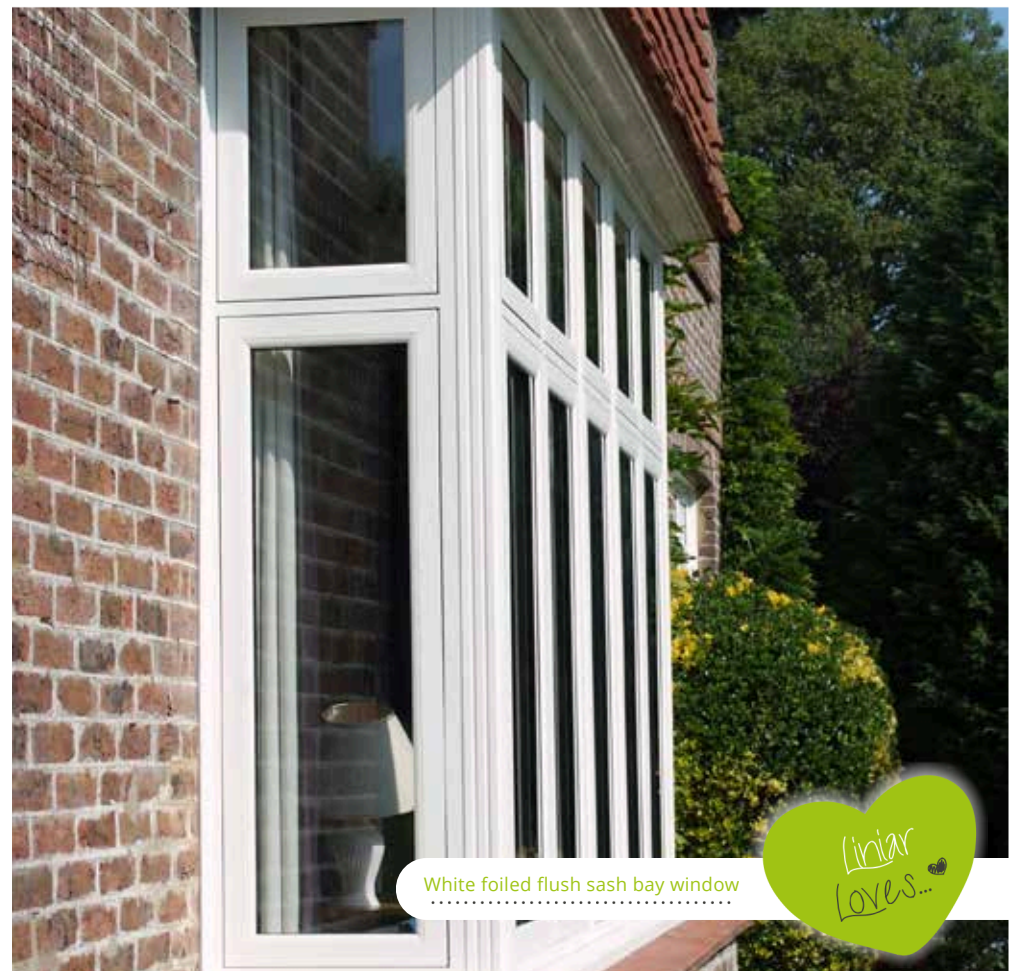
With the inside of the sash beautifully sculptured, woodgrain effect foils can be factory fitted for an authentic timber façade, or you can choose flat foils for a modern effect. You could even try different colours on the sash and outer frame for a totally personalised look. The flush sash delivers A+ energy ratings and U-values as low as 1.2 W/m²K. Many delighted property owners have won over planning restrictions where PVCu had formerly seemed impossible, thanks to the Liniar flush sash.

Your installer will be able to advise you on the choices available, or you can visit the Liniar website at <http://www.liniar.co.uk/windows/flush-sash> to see the stocked colour options and to find out more.

Options at a glance:

- EnergyPlus 6-chamber outer frame & 4-chamber sash
- Sculptured (curved) edges
- Add Georgian bars and/or patterned glass
- Wide choice of coloured and foiled frames
- Wide choice of handle and hinge options.

Also see Resurgence flush sash windows for double-rebated weather performance in a timber alternative style.



White foiled flush sash bay window



Resurgence windows

A stunning 'timber alternative window', Resurgence takes the flush sash style to new levels of design, elegance and thermal efficiency.

The UK's first PVCu double-rebated flush sash window, Resurgence offers the ideal solution for both modern and character properties.

Resurgence offers unrivalled energy efficiency with a Window Energy Rating (WER) of A++. Linar's double-rebated, co-extruded seal delivers a weather and draught-proof installation without the tell-tale brush piles often seen in the shadow gap of other PVCu flush sash windows. All Resurgence seals are conveniently out of sight for a clean, beautifully sleek finish.

When Resurgence is installed with a woodgrain foiled finish, it's difficult to distinguish from a traditional timber window. Thanks to a comprehensive lamination process, Resurgence is foiled on interior surfaces too, providing a realistic finish even when the window is open.

Personalisation and Resurgence

Resurgence is available in a stunning range of colours, including woodgrain foils such as the popular Anthracite or Agate Grey, Antea Oak and Sheffield Oak. It can also be fitted with either double or triple glazing for different thermal and acoustic options. For all available options, including hardware and security solutions, contact your fabricator or installer.

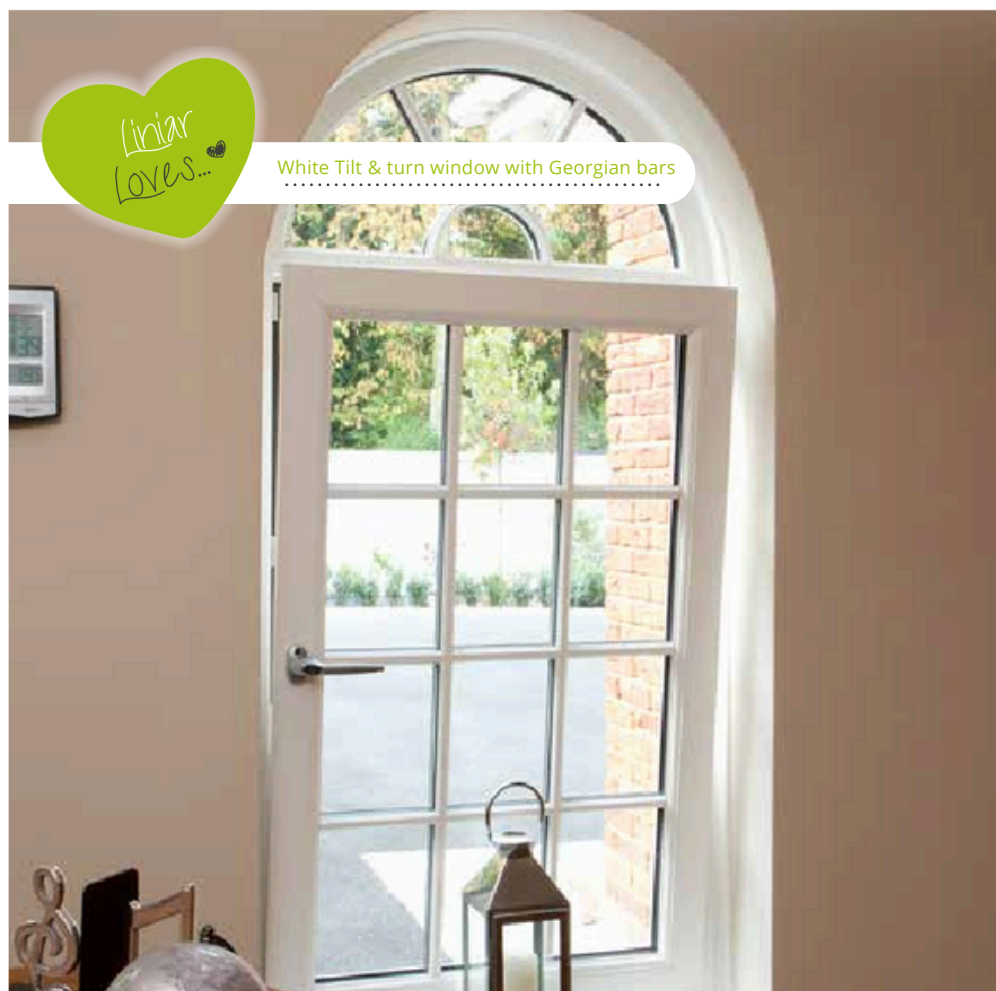
Resurgence, Article 4 and Conservation

Resurgence replicates the timber windows found on historical properties with the added 21st century benefits of low maintenance and high thermal efficiency. If you live in a historical, grade listed or conservation property, you will be subject to Article 4 or Listed Building Consent in order to fit Resurgence windows in your property.

While some councils are taking a more modern approach and accepting timber replica, energy efficient PVCu windows, it is best to check with your local council and Local Planning Authority before beginning any work on your property.



Irish Oak T-Shape Conservatory Roof



White Tilt & turn window with Georgian bars

Tilt & turn windows

If you love opening your windows wide to let in fresh air, but worry about security, why not consider the European style of a Liniar tilt and turn window?

The 'open in' style gives great options for cleaning from within (in the turn position) and secure ventilation (in the tilt position).

Offering a greater scope for larger openings than a traditional casement window, Liniar's tilt & turn windows are ideal for high-rise as well as low-rise applications, and thermal performance is helped by the larger panes of glass. Astragal or Georgian bars can be added, and your installer will be able to show you the wide choice of coloured and patterned glass on offer to you.

As with casement windows, Liniar's patented bubble gasket delivers a continuous seal around the edges, resulting in draught-free, weather proof and leak-free windows with U-values as low as 0.9 W/m²K.

Your installer will be able to advise you on the choices available, or visit the Liniar website at <http://www.liniar.co.uk/windows/tilt-and-turn> to see the stocked colour options and find out more about this style of window.

Options at a glance:

Choose from standard 4-chamber or EnergyPlus 6-chamber frame.

Sculptured (curved) or chamfered (bevelled)

Add Georgian bars and/or patterned glass

Wide choice of coloured and foiled frames





Reversible windows

Designed to make life easier...

The innovative Reversible window from Linar makes cleaning the exterior of your windows effortless and safe. This window boasts a moveable pane which rotates a full 180° cycle, allowing the external glass of the window to be reached safely from inside the property.

The innovative, easy to operate window pane is designed not to intrude inside. With a unique rotating mechanism, you can rest assured that the pane won't snag on blinds, curtains or furniture. Utilising Linar's patented features, the Reversible window is weatherproof and draught free, and with an easy-fit one-piece drip bar it easily withstands even the worst UK weather conditions with the utmost thermal efficiency.

Ideal for any type of property, particularly high-rise accommodation or upper floors with hard-to-reach windows, such as above a conservatory, the Reversible window matches the rest of the Linar range.

Designed from scratch by a team with more than 500 years' experience in the windows industry, the Reversible window offers a flush finish on both the interior and exterior of the window and features some of the slimmest sightlines available. Contemporary with stunning chamfered lines, choose from a wide range of solid and woodgrain foils to suit your property.

Fully guaranteed with exceptional customer service, the Reversible window is the ideal choice for both residential and commercial properties.



French windows

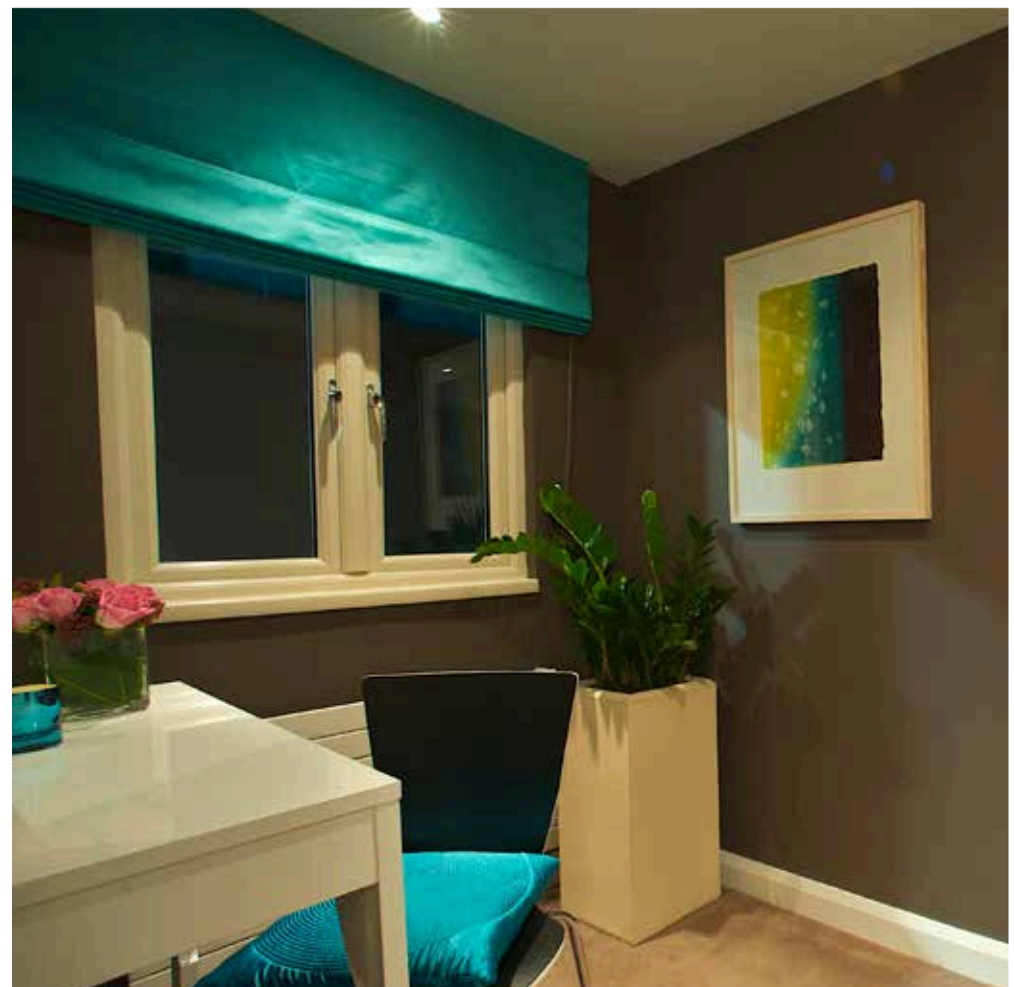
Similar to the styling of French doors, Liniar's French windows open out from the centre to offer a full-width opening and maximum light.

Offering a distinctive style, French windows are ideal as a fire escape. One sash carries with it the central mullion as the windows are fully opened, providing you with unrestricted access and views.

With high security locks, your security is assured – and child restrictors can also be added for peace of mind. Traditional or contemporary, French windows can be installed in a variety of locations and buildings.

Liniar French windows feature the patented bubble gasket used in all products, delivering a continuous seal, even in the corners. This results in draught-free, weather proof and leak-free windows. High energy ratings result in U-values as low as 0.8 W/m²K.

Your installer will be able to advise you on the choices available, or you can visit the Liniar website at <http://www.liniar.co.uk/windows/french> to see the stocked colour options and find out more about Liniar French windows.



Options at a glance:

Choose from standard 4-chamber or EnergyPlus 6-chamber frame

Sculptured (curved) or chamfered (bevelled)

Add Georgian bars and/or patterned glass

Wide choice of coloured and foiled frames

Wide choice of handle and hinge options.



The Liniar range of doors

Choose a Liniar door to create a stunning entrance to your home.

The profile, or frame, in a Liniar door contains multiple chambers to minimise the transfer of heat from the inside of your property to the outside. This, together with other innovative design enhancements, helps to minimise your energy costs on an ongoing basis.

Both PVCu residential doors and composite front doors utilise Liniar frames to perfectly match with your windows, and offer superb energy ratings. Liniar fabricators are able to offer a vast choice of styles, designs and colours - please speak to your fabricator to see the full range of options available.

French doors offer a solution for wider entrances and let in more light - with U-values as low as 1.0.

Why choose Liniar doors?

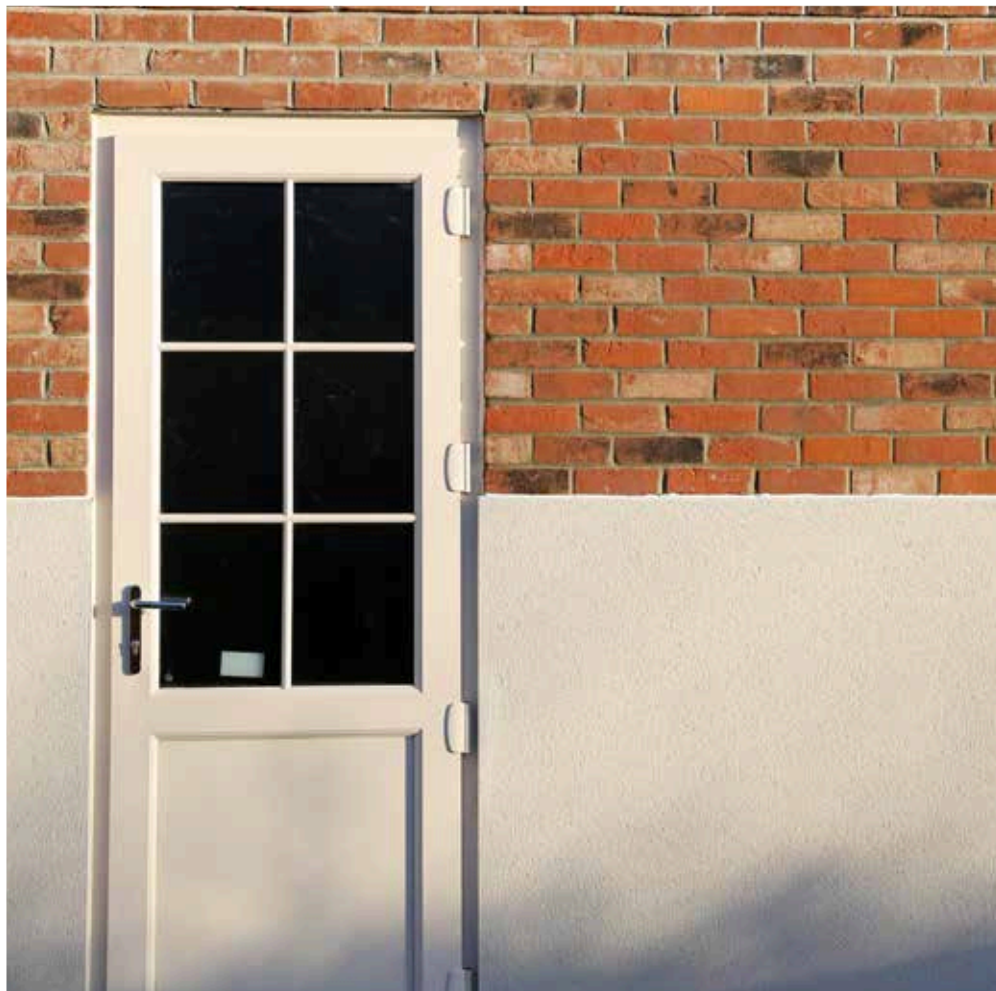
Supreme thermal performance compared to other doors on the market

Fully tested and accredited with the highest security credentials

Doors match perfectly with the Liniar window range for a beautiful finish

Patented design features deliver the smoothest and lightest operation.

For more information visit www.liniar.co.uk/doors.



Residential doors

Your front door offers a first impression to callers to your home. With a Liniar PVCu residential door you can make sure it's a good one.

Liniar fabricators offer a wide selection of PVCu residential doors, all with the same energy efficient profile as your Liniar windows, together with high security locks and a great weather seal.

Every residential door is completely bespoke and made to order for you. Choose from a wide variety of colours and styles, glazed panels and matching sidelights. All Liniar residential doors are available with optional Part M compliant low threshold and your choice of hardware, handles, letter boxes and knockers. In addition, Liniar doors exceed British Standards and have achieved PAS 24:2015 and Secured by Design accreditation.

Liniar residential doors are also available in a 'stable' style, with the top section of the door opening independently of the lower section. Ideal for children and pets, the stable door style suits both traditional and modern properties.

Your installer will be able to advise you on the options available, or visit the Liniar website at <http://www.liniar.co.uk/doors/residential> to find out more.

Options at a glance:

Choose from standard 4-chamber or EnergyPlus 6-chamber frame

Sculptured (curved) or chamfered (bevelled)

28mm double glazed or 36mm triple glazed units

Part M compliant low threshold available

Wide choice of coloured and foiled styles

Wide choice of handle, letterbox and hinge options.



Liniar
Loves...

Chartwell Green Residential door with matching sidelight



French doors

Slim sightlines and a 'floating' central mullion mean Linar French doors are the ideal choice for a fully opening and secure entrance to your home.

An attractive alternative to sliding patio or bi-folding doors, French doors can open inwards or outwards to suit your living space. Choose from Linar's sculptured style for beautiful curves, or chamfered for a flat, more modern finish to your doors.

You could add sidelights for larger openings, and bevelled or patterned glass to add a distinctive style to your doors. Whichever design or colour you select, you can rest assured of the highest security as Linar French doors carry PAS 24:2015 and Secured By Design accreditation.

Outperforming most of the other leading brands, Linar French doors can achieve a U-value as low as 1.0 W/m²K with triple glazing, ensuring the heat stays in your home.

Your installer will be able to advise you on the options available, or visit the Linar website at <http://www.linar.co.uk/doors/french> to find out more about French doors.



Options at a glance:

Choose from standard 4-chamber or EnergyPlus 6-chamber frames

Sculptured (curved) or chamfered (bevelled)

28mm double glazed or 36mm triple glazed units Part M compliant low threshold available

Add Georgian bars and/or patterned glass

Wide choice of coloured and foiled frames

Wide choice of handle and hinge options.



Why stick to white?

The Liniar range comes in a wide variety of colours and finishes.

The basic Liniar PVCu profile is available in not just white, but also cream, caramel, brown and black substrates to offer a personalised appearance*



– or why not change its appearance completely by choosing one of our authentic foil finishes?

Liniar's coloured and woodgrain effect foils are factory fitted at the production stage, so you can rest assured of a perfect finish. Guaranteed for a minimum of 10 years, foiled PVCu is a low-maintenance alternative to timber

as it won't rot or need repainting; all it requires is an occasional clean with soapy water.

Every Liniar product is available in a wide choice of coloured foils, applied in house using high tech equipment. In addition to standard colours, you could select a completely bespoke colour and finish from the huge range available. You can even choose to have the foil applied on just the interior or exterior if you prefer.

Please ask to see a Liniar foil swatch booklet to help you select the perfect colour choice.



Liniar's colour range

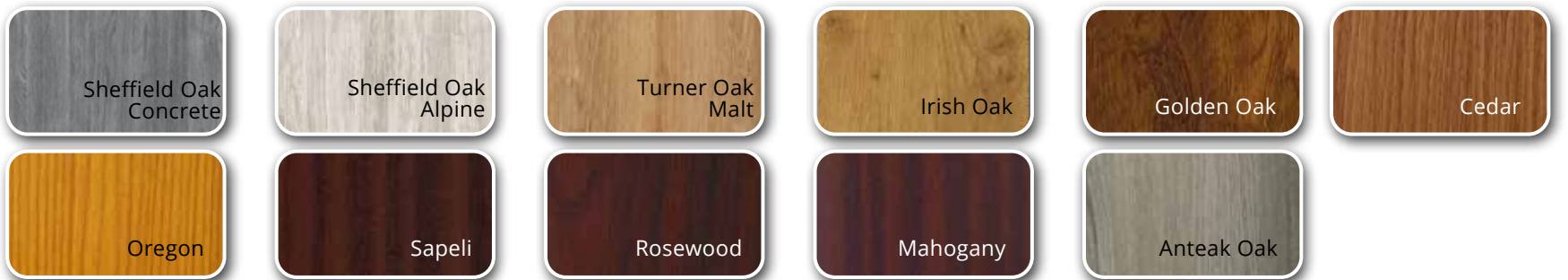
Neutrals



Greys



Woodgrains



Metallics



Primary



All colours are representative only - please ask to see a Liniar foil swatch booklet for accurate colours and finishes. * Not all Liniar products are available on all substrates - and some foils may require longer lead times to supply.

More options to consider



Georgian Bars

Unlike other astragal bars, Linar Georgian bars are designed to simply snap into place before glazing and won't fall off. They also offer a more authentic appearance than adding aluminium bars within the sealed unit.



Thresholds

All Linar doors are supplied as standard with PVCu outer frame and optional cill. You can also select a standard aluminium low threshold or a Part M compliant full or half aluminium threshold.



Arches

Linar PVCu profile can be shaped to give your installation a truly bespoke appearance. Offered by a limited number of specialists, arching can add modern or contemporary styling.



Patterned Glass

A huge range of etched and patterned glass is available in both double and triple glazing for your Linar windows, doors and sidelights. Ask your installer for the options they can offer.

Fire exits

It's important for every homeowner to plan an exit route in the unlikely event of a house fire. Linar French and Tilt & Turn windows are ideal to provide a practical solution for your family's safety.

Child safety

If your windows are intended to open fully, you may wish to fit child restrictors for additional safety for your family. Child restrictors can be fitted to almost any Linar window.

Hinge guards

Optional hinge guards add a further level of security to your Linar windows and help to prevent the moving sash from being forcibly opened from the outside.

Handles

Locking handles should be fitted for maximum security – and the choice of colours, styles and designs is almost endless. Ask your installer to show you the full range offered.

Finished window and door products are manufactured by independent Linar fabricators, who can offer a wide range of finishes including glass, handles and hardware. Please see your local fabricator for more details about specific requirements.



7 great reasons to choose Liniar

Innovative - continued investment in infrastructure, technology and a great team of people results in forward-thinking designs.

Energy efficient - designed from scratch to achieve the pinnacle of thermal performance and retain more heat in your property

Safe and secure - engineered with built-in security features and approved by independent testing facilities

British made - frames are extruded in our state-of-the-art factory in the heart of Derbyshire

Lead free - all Liniar profiles are extruded using materials that are 100% lead free

Quality assured - backed with ISO 9001 accreditation for your peace of mind

Guaranteed - all Liniar frames are guaranteed to not warp, split or discolour for a minimum of 10 years



Your Liniar stockist is:



Everbright

WINDOWS & DOORS

☎ 01233 239674

🌐 www.everbrightwindows.co.uk

✉ info@everbrightwindows.co.uk

📍 Unit 3, Creative Enterprise Quarter,
Javelin Way, Ashford TN24 8FN

Liniar

Flamstead House
Denby Hall Business
Park Denby
Derbyshire DE5 8JX

Tel: +44 (0)1332 883900
Fax: +44 (0)1332 883901
Email: sales@liniar.co.uk
www.liniar.co.uk

