



Everbright

WINDOWS & DOORS



Proud To Be A
UK Manufacturer



**UK
CA**



ISO
9001 : 2015
14001 : 2015

INTEGRATED
MANAGEMENT
SYSTEM

REGISTERED

Certificate
No 379012021

CONTENTS

- 4** **RD77 Roller Garage Doors**
- 5** **About the RD77 Range**
- 6** **RD55 Roller Garage Doors**
- 7** **About the RD55 Range**
- 9** **Colour Options**
- 12** **Construction Parts of a Roller Garage**
- 14** **Runners Base**
- 16** **Rails Roll Housing**
- 18** **Control Systems**



WHY CHOOSE A ROLLER GARAGE DOOR?

Roller doors can bring a whole host of benefits to your property. Not only can they maximise space in a way other door types can't, but they also help with energy efficiency and security.

Improved insulation

Quiet, smooth functionality

Strong physical barrier

Protection against volatile weather

Highly secure and effective
deterrent for break-ins

Parts are made from powder-coated
or painted aluminium

Reduced sound pollution

Electric Operation



RD77 ROLLER GARAGE DOOR

For the perfect blend of style, security, functionality and affordability, our RD77 range is exactly what you're looking for. Perfect for single, large or double garages, these roller doors are compact, secure and efficient. They maximize space in your garage whilst maintaining a simple, stylish operation. In fact, every aspect of the RD77 range is built to improve and enhance your lifestyle.

The RD77 range of doors have a maximum opening width of 4875mm (16ft), comes with two remotes as standard with two occupants in mind, meaning that neither user has to go without the added convenience and ease of use that remote access offers. It is created to be strong, durable and efficient with only a 300mm (12 inch) square fully boxed housing and 95mm (4 inch) guide runners the RD77 is designed to be as compact as possible to take up minimal storage space within your garage.

Whatever style you prefer, RD77 roller doors come with a huge range of colour options to match your precise requirements and with a number of optional extra features available they can be tailored to your needs.

ABOUT THE RD77 RANGE

Supply and Installation by our team, our Range of installed doors are equipped with a one press open and close with a hard wired safety system and internal manual override as standard, with our installed option you also benefit from a site survey, removal and disposal of any old door and a 2 year parts and labour warranty. With the option to upgrade to a wireless safety system with an internal courtesy light and Secure By Design accreditation.

	Supply only	Installed
Installation	✗	✓
Web based In-depth Installation Instructions	✓	N/A
Site Survey	✗	✓
Removal	✗	✓
Disposal	✗	✓
Number of handsets	2	2
Internal Manual Override	✓	✓
External Manual Override	Optional	Optional
Hardwired Safety Edge	✓	✓
Wireless Safety Edge	Optional	Optional
Wireless Safety Edge with Alarm	Optional	Optional
Warranty period	2 Year Parts Only	2 Year Parts & Labour Only
Somfy 5 year motor warranty upgrade	Optional	Optional
Somfy 5 year control system warranty upgrade	Optional	Optional

SPECIFICATION

General

Top Box: 300mm (12 inch) Sq
Guide Runner Width: 95mm (4 inches)
Slat Height: 77mm (3 inch)
Slat Depth: 18mm (3/4 inch)

RD77 Single

Max. curtain surface area: 15 square meters
Max. opening width up to: 2590mm (8ft 6")
Max. opening height up to: 2590mm (8ft 6")

RD77 Large

Max. curtain surface area: 15 square meters
Max. opening width up to: 3505mm (11ft 6")
Max. opening height up to: 2590mm (8ft 6")

RD77 Double

Max. curtain surface area: 15 square meters
Max. opening width up to: 4875mm (16ft)
Max. opening height up to: 2285mm (7ft 5")



RD55 ROLLER GARAGE DOOR

Ideally suited to single sized garages, our slimline RD55 range allows you to maximise space both inside and outside your garage. The maximum total width of an RD55 door is up to 2440mm (8ft), including the frame, due to the compact nature of the RD55's slim line 205mm (8inch) square top box and space saving 65mm (2inch) guide runners it's truly built with scale in mind.

While compact, our RD55 range doesn't skimp on security or functionality. All RD55's are strong, robust and provide smooth, easy operation that will last for years to come.

With this in mind all the RD55 Roller garage doors come remote controlled with 2 handsets, internal manual override and hard wired safety edge as standard.

ABOUT THE RD55 RANGE

	Supply only	Installed
Installation	✗	✓
Web based In-depth Installation Instructions	✓	N/A
Site Survey	✗	✓
Removal	✗	✓
Disposal	✗	✓
Number of handsets	2	2
Internal Manual Override	✓	✓
External Manual Override	Optional	Optional
Hardwired Safety Edge	✓	✓
Wireless Safety Edge	Optional	Optional
Wireless Safety Edge with Alarm	Optional	Optional
Warranty period	2 Year Parts Only	2 Year Parts & Labour Only
Somfy 5 year motor warranty upgrade	Optional	Optional
Somfy 5 year control system warranty upgrade	Optional	Optional

SPECIFICATION

General Top Box: 205mm (8 inch) Sq
Guide Runner Width: 65mm (2 1/2 inches)
Slat Height: 55mm (2 inch) Slat Depth:
8mm (1/4 inch)

Compact RD55 Single Max. curtain
surface area: 7 square meters Max.
opening width up to: 2310mm (7ft 7")
Max. opening height up to: 2285mm
(7ft 5")





COLOUR OPTIONS

We understand that alongside excellent quality, style and aesthetic appeal is a very important feature for any roller garage door. That's why with Rollerdoor there's no need to worry about finding that perfect shade for your garage door; with fifteen standard colours, 3 laminate wood effects and the custom RAL colour options to choose from, you can go as bold or as understated as you want.

Our colour options are extensive, diverse and will ensure a perfect finish to your garage door preference - whether you want to go bold with a statement double garage, or you prefer a more subtle approach with contemporary neutral tones that complement the existing decor of your home.

With our standard colours we can quote references that are the nearest standard RAL, they will not be an exact match and are intended as a guide only but there is nothing like the real thing so we also offer free colour samples that can be delivered to you.

Within our range we also offer a colour match of the guides, base rail, header plates and roll housing which we try to make as exact as possible to the slat colour, due to the manufacturing process of the slat profile resulting in a textured finish while all other coloured items are supplied in a smooth finish we cannot guarantee an exact match.



RAL colour options available



Green



Anthracite



Cream



White



Red



Brown



Black



Ivory



Chartwell Green



Blue



Beige



Light Grey



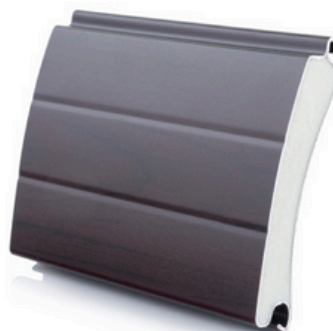
Painted Irish Oak



Painted Golden Oak



Irish Oak Laminate



Painted Rosewood



Golden Oak Laminate



Rosewood Laminate

* Laminate and Irish Oak options are only available in RD77 range

*Please be aware that all colours can vary slightly due to batch variations.

CONSTRUCTION PARTS OF A ROLLER GARAGE DOOR

SLATS

We want our products to reflect our quality craftsmanship, which is why all of our slats are double skinned with a thick foam filled insert and constructed out of strong, robust aluminium for longevity and durability.

RD55 Slats

The slats for our RD55 range of doors are 55mm high and 8.2mm thick with a foam filled insert. The slats are made from powder coated aluminium available in a choice of 14 colours.

RD77 Slats

Our range of RD77 slats are 77mm high and 18mm thick with a foam filled insert. Our slats are constructed out of high quality, powder coated aluminium and are available in any of the 18 colours in our range, with 15 painted colours and 3 laminate options to give you a wide range of aesthetic options.

Our slats are accurately cut and assembled into the curtain by our own on-site team using state of the art machinery to match each individual doors specifications, ensuring a perfect fit for every door frame, a strong seal and a long-lasting door.

Our double skinned aluminium slats offer many benefits over single metal sheet doors, including:

- Increased insulation
- Strong physical barrier
- Reduced likelihood of break-ins
- Increased protection from ultraviolet and infrared rays
- Reduced sound pollution
- Protection against volatile weather
- Space saving within the garage
- Quieter functioning



GUIDE RUNNERS

We stock a large supply of robust and durable aluminium powder coated guide runners, constructed to the highest quality using the finest materials. Our guide runners are specially designed to allow the curtain to run smoothly and with the double brush in the guide runner to protect the roller door system from debris that can get caught, as well as help reduce drafts. Our guide runners will ensure a long lasting, quality product to ensure complete satisfaction for you.



RD55 Guide Runner

- Aluminium
- Double Brush
- 65mm width
- 27mm depth
- Standard range of 14 colours
- RAL colour match available

RD77 Guide Runner

- Aluminium
- Double Brush
- 95mm width
- 34mm depth
- Standard range of 15 colours
- RAL colour match available

SBDRD77 Guide Runner

- Aluminium
- Two piece construction
- 100mm width
- 36mm depth
- Range of 4 colours
- RAL colour match available

BASE RAILS

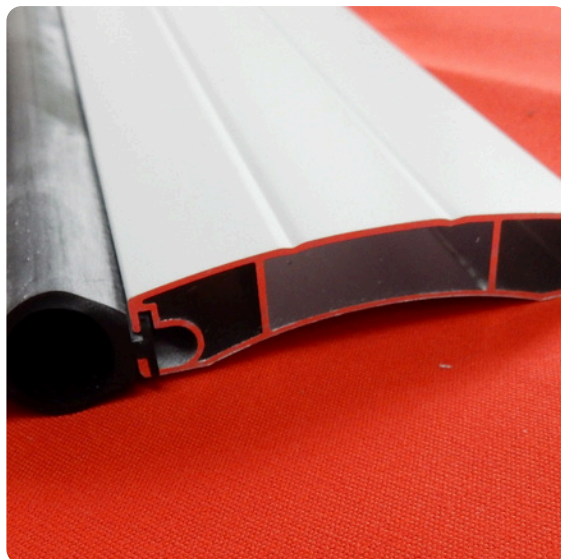
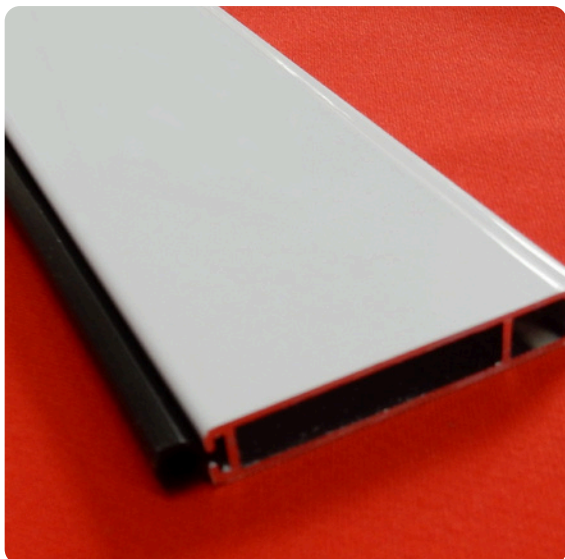
Our base rails are made from extruded aluminium to increase the strength of the curtain of the door, ensuring the longevity of our roller garage doors. All of our base rails come as standard with a rubber strip in the bottom edge to help with insulation and noise reduction, while also working as a deterrent to pests and to provide protection against water ingress; our rubber seals help to keep your garage protected all year round.

RD55 Base Rail

The last slat of the RD55 base rail is an extruded aluminium slat, powder coated to match the curtain colour. The slat is hollow, 49mm high and 8.2mm thick; there is a small rubber insert at the bottom to cushion the door, with the rubber seal being 6mm wide and 6mm high.

RD77 Base Rail

The RD77 roller garage door has a base rail of powder coated extruded aluminium, made to match the colour of the door's curtain. The slat is hollow, 78mm high and 18mm thick with a rubber seal 15mm in width and 15mm high.



ROLL HOUSING

All of our roller doors are fully enclosed in a roll housing that is designed so it can be installed in a variety of ways:

- ❖ Inside the garage behind the lintel
 - ❖ A limited fixing so as much as possible is behind the lintel
 - ❖ Fully below and in the opening of your garage
 - ❖ With the addition of silicone to help seal the joints they can even be installed outside your garage
- (Please Note* The roll housing will be visible and the concave face of the door slats faces outwards, with an external fitted shutter)

We supply a fully enclosed roll housing because it is part of the machinery directive to stop entrapment, and ensures the longer lasting life of the internal mechanism. The enclosed roll housing is constructed out of strong and durable aluminium and can help protect your garage door from any accidental damage that can affect the functionality of your door. Our roll housing and guide runners come as standard in white, but we do offer a colour match facility where possible as an optional extra.



Benefits of a Roll Housing

- ❖ Provides a fascia for the door
- ❖ Provides the curtain with weather protection all round
- ❖ Protects the components of the door from dust or debris that can jam mechanisms
- ❖ Creates a very neat appearance
- ❖ Reduces operating noise
- ❖ Increases the insulation and draught-proofing qualities of the door
- ❖ Reduces the risk of fingers, ties, hair etc. being caught up in the mechanisms



CONTROL SYSTEMS

Through the construction of our doors and the integration of the latest cutting-edge technology, our roller doors strike the perfect balance between security and convenience. With this in mind we offer simple controls which operate on a hold to run operation through to our Somfy Branded system with alarm.



Partnered with Somfy - a world-recognised automation and security company - to supply a range of their controllers, motors and home automation products. With this in mind you can upgrade your door to a somfy control system or motor and these components will benefit from an additional warranty period to cover them for 5 years on a parts only basis from date of purchase.

Rocker Switch

- ✔ Hold to Run operation
- ✔ Door can only be operated by someone inside the garage
- ✔ Large rocker button for ease of use

Key Switch

- ✔ Hold to Run operation
- ✔ Can be installed so the door can be operated by someone either inside or outside the garage
- ✔ Security keys needed to operate the switch

Remote Control Hardwired Safety Edge

- ✔ Automatic Operation open & close
- ✔ Safety edge device with curly cable
- ✔ Optical cell through the base rail rubber which travels with the door curtain

Remote Control Wireless Safety Edge

- ✔ Automatic Operation open & close
- ✔ Wireless safety edge device via battery operation
- ✔ Safety edge device which travels on the last slat of the door curtain

Remote Control Wireless Safety Edge with Alarm

- ✔ Automatic Operation open & close
- ✔ Wireless safety edge device via battery operation
- ✔ Safety edge device which travels on the last slat of the door curtain
- ✔ Audible alarm system should someone try to pry your door open from the outside

Somfy Remote Control Wireless Safety Edge

- ✔ Automatic Operation open & close
- ✔ Wireless safety edge device via battery operation
- ✔ Safety edge device which travels on the last slat of the door curtain
- ✔ Audible alarm system should someone try to pry your door open from the outside
- ✔ 5 Year parts warranty on the control system



Everbright

WINDOWS & DOORS



☎ 01233 239674

🌐 www.everbrightwindows.co.uk

✉ info@everbrightwindows.co.uk

📍 Unit 3, Creative Enterprise Quarter,
Javelin Way, Ashford TN24 8FN



SCAN ME

Follow us on  