



ALPHA SIGMA PHI FRATERNITY

CEO REPORT

MARCH 2021

ALPHA SIG



ALPHA SIGMA PHI FRATERNITY

CEO REPORT

MARCH 2021



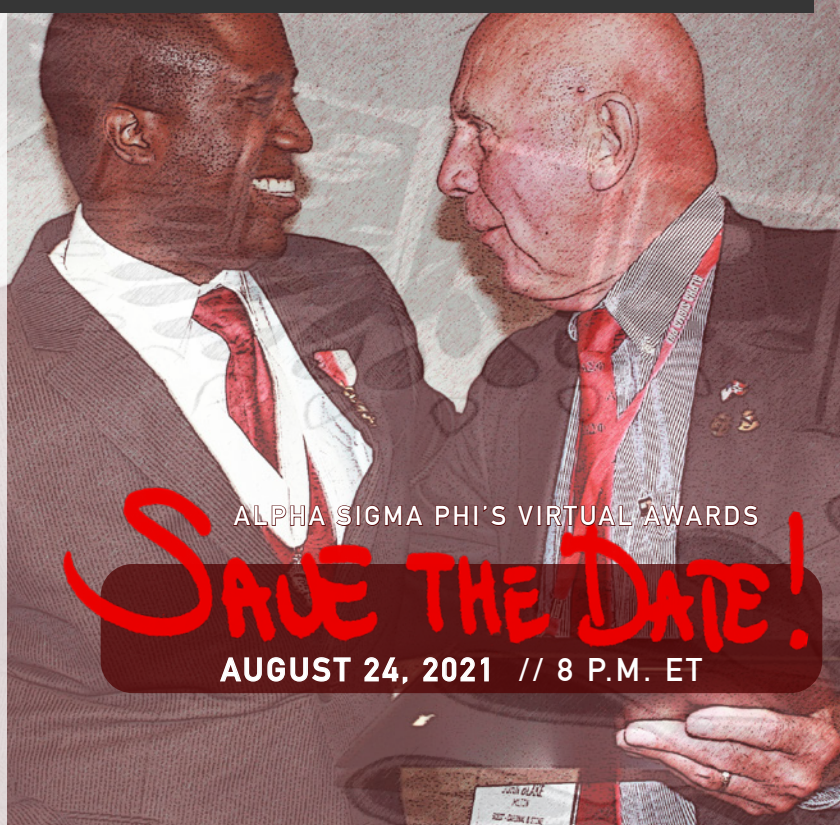
ELEVATE CANCELLED, FOCUS TURNS TO GRAND CHAPTER

Alpha Sigma Phi announced the cancellation of Elevate - International Leadership Conference due to COVID-19 concerns. The event was scheduled to take place in Louisville, Kentucky on July 8-11, 2021. **Focus now shifts to Grand Chapter in New Orleans, Louisiana on July 21-24, 2022.** Further updates will become available in future editions of the CEO Report and at alphasig.org.



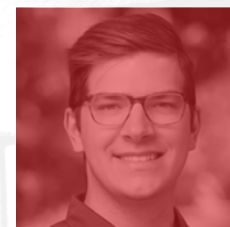
NOMINATE A DESERVING BROTHER FOR A FRATERNITY AWARD

Despite the cancellation of Elevate, the Fraternity remains committed to bringing you a virtual awards presentation, much like it did [last August](#). This year's awards presentation will air on Facebook and Instagram on August 24 at 8 p.m. ET. The time is now to nominate a deserving brother for a Fraternity Award to be given at the virtual event. [Click here](#) to nominate a brother for one of the awards being given out this year!

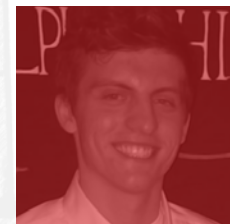


HEADQUARTERS STAFFING UPDATE

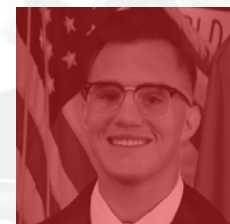
Alpha Sigma Phi is proud to announce that the following brothers will join Headquarters Staff beginning in July.



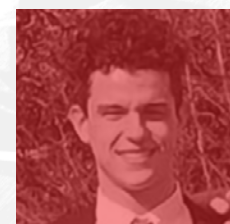
COLLIN BINKLEY
Colorado State '17



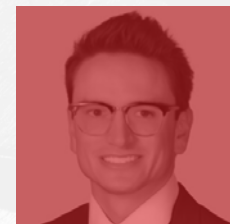
HENRY CALLEO
Buffalo '18



KEVIN FINKLER
Nevada '17



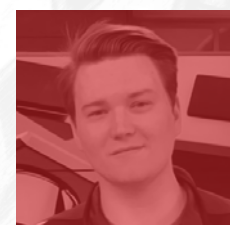
BENJAMIN SCHUHLE
Longwood '18



CAM SKALLA
UC-Colorado Springs '18



MAKSYM TKACHUK
TAMU-CC '18



TAYLOR WALLERSTEIN
UC-Colorado Springs '19

MEMBERSHIP ASSESSMENT SURVEY

The Fraternity invited its undergraduate members to participate in our Membership Assessment Survey. Here are some highlights from the results!

TOP 4^s

STUDENT
INTERESTS

FRATERNITY
INTERESTS

1



NETWORKING

2



MENTAL HEALTH

3



FINANCIAL MNGMT.

4



MENTORSHIP



RETENTION



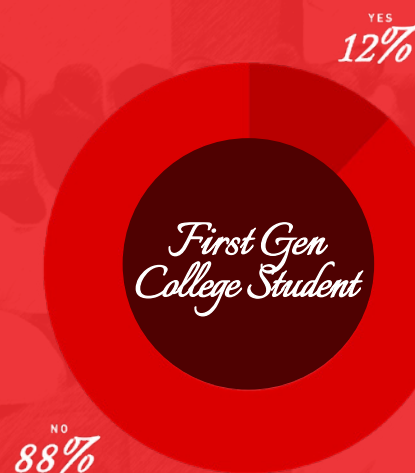
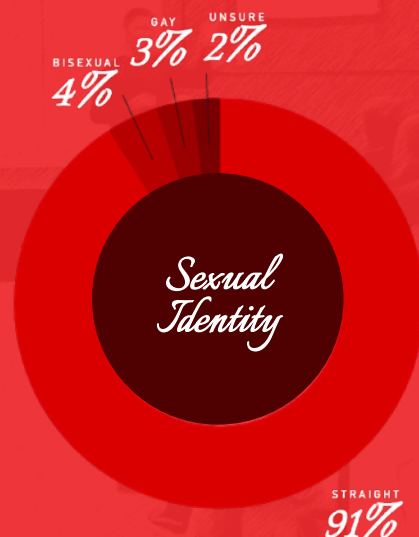
RECRUITMENT



RELATIONSHIPS W/ OTHER Frys

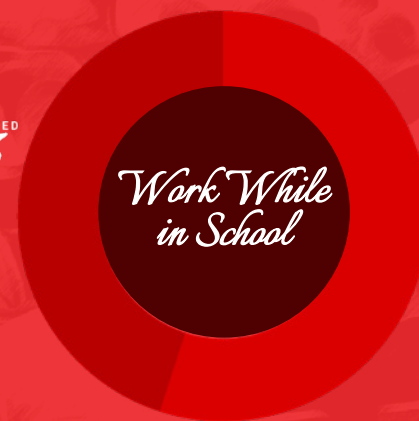


PHILANTHROPIC EVENTS



NOT EMPLOYED

45%



FAST FACTS



- 1** OF THE MEMBERS WHO FILLED OUT THE SURVEY, 73% IDENTIFIED AS CAUCASION. ASIAN AMERICANS MADE UP THE NEXT LARGEST GROUP REPRESENTED IN THE SURVEY.
- 2** WHEN ASKED ABOUT IDEOLOGICAL BELIEFS, 43% OF THOSE SURVEYED SAID THEY CONSIDER THEMSELVES TO BE MODERATE, FOLLOWED BY 36% CONSERVATIVE AND 21% LIBERAL.
- 3** WHEN ASKED ABOUT TOTAL HOUSEHOLD/FAMILY INCOME, 21% OF THOSE SURVEY SAID THEIR FAMILY INCOME IS MORE THAN \$200K PER HOUSEHOLD, FOLLOWED BY \$30K-\$60K AT 19%.
- 4** WHEN ASKED "WHAT COULD YOUR CHAPTER DO TO IMPROVE THE MEMBERSHIP EXPERIENCE FOR ITS MEMBERS," THE NUMBER ONE CITED RESPONSE WAS "A STRONGER BROTHERHOOD."

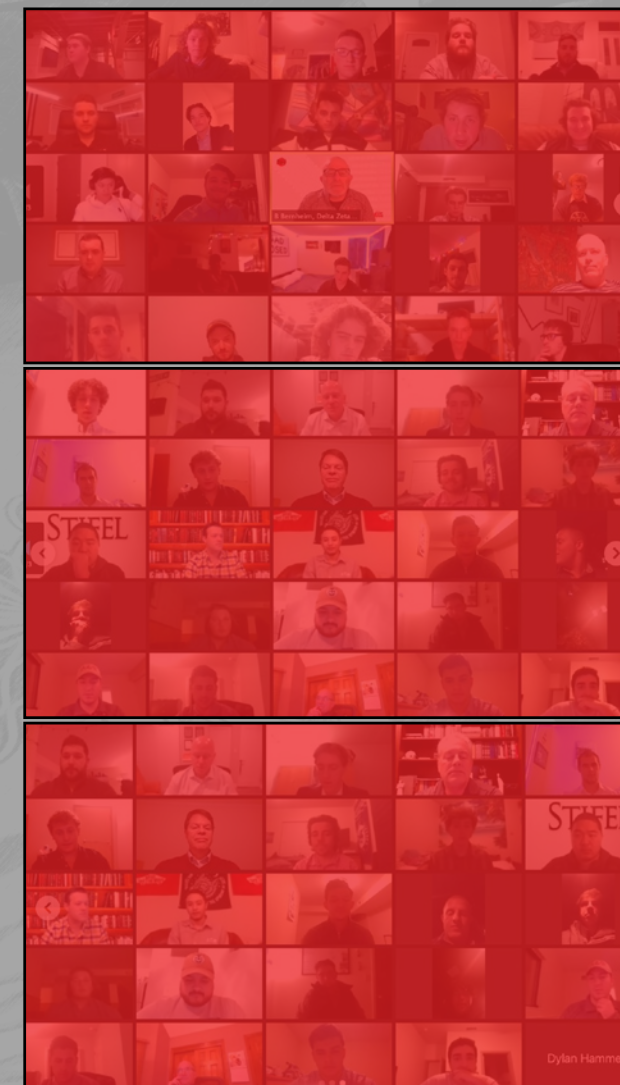
THE FOUNDATION ANNUAL REPORT IS NOW AVAILABLE

The Alpha Sigma Phi Foundation released its 2020 Annual Report. It includes current fund balances, a consecutive donors list, the top 100 lifetime donors, current Manigault Society members, annual giving from 2020 and more. To view this document, please [click here](#).

ETA XI HOLDS SUCCESSFUL VIRTUAL CAREER EVENT

The Eta Xi Chapter at UC-Colorado Springs hosted its first virtual alumni career night. The wildly successful event drew nearly 80 alumni and undergraduates to join.

In an Instagram post from the Chapter's account, they wrote: "It was a great way to network. Huge thank you to all of our alumni that gave their time to us tonight, this was an extremely beneficial event to our brothers. We would love to do it again in the future!" Alpha Sigma Phi encourages other chapters to arrange similar events, as it helps address the number one student interest according to our Membership Survey; Networking.



ALPHA★SIG