

LONSEAL[®]

FLOORING



HOSPITALITY



HEALTHCARE



FITNESS



CORPORATE



EDUCATION

Flooring Reimagined



ABOUT LONSEAL®: “The Little Giant”

Celebrating over 48 years of durability and performance in a variety of commercial industries, Lonseal® offers a unique selection of resilient sheet vinyl flooring in exterior and interior, embossed, smooth, fitness and wood-grain surfaces. We provide finishes of exceptional beauty and utility which are as economical as they are exhilarating. Servicing a range of commercial applications including healthcare, education, fitness, corporate, retail, and hospitality, Lonseal’s products are specified through architects and designers nationwide.

COMPANY HISTORY:

Lonseal, Inc. is a subsidiary of Lonseal Corporation in Tokyo and was established in Southern California in 1972. The company quickly established itself as a provider of unique flooring designs with distinctive color choices. In the early 80’s, Lonplate (page 10) — the original steel-plate design adapted to resilient flooring — put Lonseal on the map as a creator of innovative, embossed products. Additionally, Lonseal’s technological advances bolstered the company’s reputation as it infused products with pliable properties not typically associated with vinyl.

Lonseal is known as “the little giant” in the resilient sheet vinyl flooring industry. Our corporate sales office in Carson, California, has a team with an average of 33 years of sheet vinyl experience! Our product line is most often specified by designers and architects because we focus on making one thing ... products that will over-deliver quality. Not only does our flooring exceed expectations, Lonseal products can easily customize products to meet our clients’ needs.

“THE LITTLE GIANT”

CONTENTS

About Lonseal	Page 1
Topseal	Page 3
Embossed	Page 5
Smooth	Page 14
Fitness	Page 29
Exterior Decking	Page 33
GreenVinyl Story	Page 36
Advantages of Vinyl	Page 37
GreenVinyl Chart	Page 38

AFFILIATIONS, CERTIFICATIONS AND MEMBERSHIPS



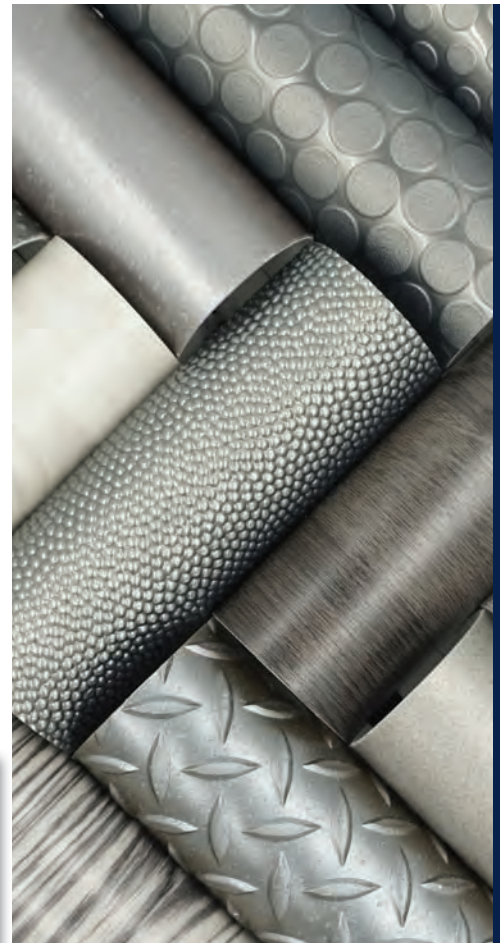
EXCLUSIVE LONSEAL® FORMULATIONS



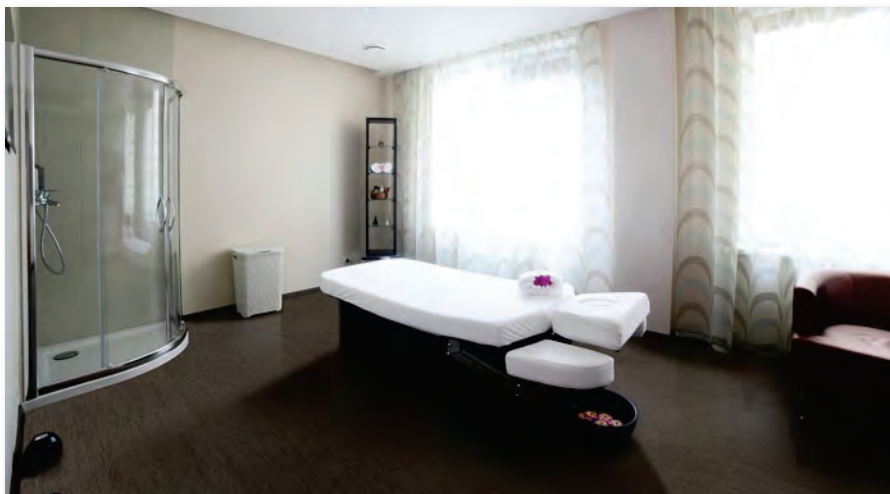
For over 19 years, Lonseal Corporation has proudly been certified to be in conformance with JIS Q 9001 (equivalent to AS9100), the International Quality Assurance Standard. Since inception, the company has adhered to the highest level of manufacturing and safety standards in the industry.

Additionally, Lonseal has long been a leader in eco-friendly manufacturing as evidenced by our GreenAir® Collection for low VOCs, our exclusive GreenMedic® anti-microbial formula, and FloorScore® certified products which support Indoor Air Quality (IAQ). See our *GreenVinyl story on page 36*.

Lonseal pushes the limits of conventional vinyl, leading the sheet vinyl flooring industry in exciting new directions through technological, visual, and textured innovations. Our inspiration comes from the environment in which we live. We create transitional designs that combine the best of traditional and contemporary compositions to create a classic look that never goes out of style. Our goal is to connect interior environments with the rest of humanity. We take an intellectual approach and invest our time in researching the right flooring designs for various interior environments. We design patterns that balances function with beneficial effects to create a ... **FLOORING REIMAGINED.**



FLOORING REIMAGINED



Lonstrand SD#258 Black Lava

FLOORING
REIMAGINED



Lonwood Natural #W7453 Prairie and Loneco Linen #EL331 Oatmeal - Cayuga Medical Center, Ithaca, NY



Lonwood Natural Topseal
W7462 Gentle Wind
Texas Childrens Hospital, Houston, TX



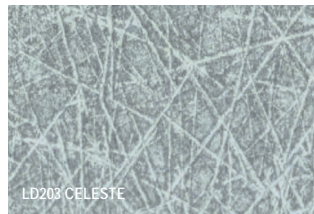
Londante Topseal
LD203 Celeste

WHAT IS TOPSEAL?

TOPSEAL IS...

- A factory-applied urethane finish that creates a “no-wax” floor. It protects, reduces scuffing and simplifies routine maintenance. It is now available as standard on Lonseal’s most popular smooth and wood grain products.
- Applied as a surface coating measuring 30-microns — three times thicker than most PUR finishes — and extends the life of the flooring by protecting it from wear due to staining and soiling.
- An eco-friendly formulation that incorporates Lonseal’s GreenAir® technology for low VOCs, as well as GreenMedic® for increased microbial resistance.
- Included in select Lonseal flooring products for commercial industries. All flooring products with the Topseal finish are FloorScore® certified.
- Saves time on maintenance, saves money on life-cycle costs, and saves the environment.

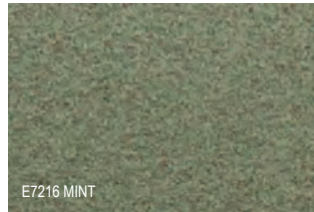
LONSEAL’S TOPSEAL COLLECTION



LD203 CELESTE

LONDANTE®

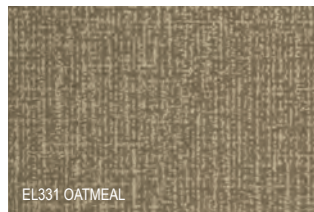
Londante® features a hypnotic cross-hatch pattern that imparts a distinctly Italian flavor to any interior space. It’s delicately-etched lines suggest intricate marble and stone textures, while saturated colors stand strikingly on their own or compliment a wide array of wood looks and solids. PHTHALATE FREE



E7216 MINT

LONECO®

Loneco® is comprised of over 50% recycled content and features elegant organic colors that easily conceal scuffing and soiling. Loneco® has been utilized in such diverse commercial spaces as Evergreen Hospital in Washington and Volkswagen dealerships nationwide.



EL331 OATMEAL

LONECO® LINEN

Loneco® Linen features a loose woven design that gives a classic, fashionable touch to any interior space. An abstracted take on a fabric look, Loneco Linen suggests the delicacy of cloth while its hue variations and slightly pebbled texture provide strength and durability.



F7264 BRASS

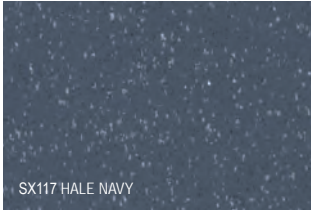
LONFLOOR® GALVANIZED

Lonfloor® Galvanized Topseal lends a striking industrial touch to any interior, from office break rooms to retail spaces. The subtle color choices offer warmth while the metallic design gives a polished, sophisticated appeal — particularly evident in the lustrous color, Brass!



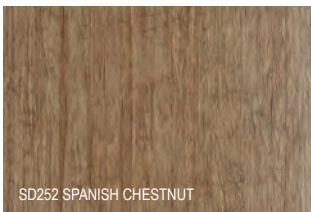
LONMOIRE®

Lonmoire® features a wood-grain pattern that has the characteristics of watery waves of lines. This ripple design that was once coveted by queens, distinguishes the centuries-old, timeless pattern that now gives everyday commercial applications a genteel touch. PHTHALATE FREE



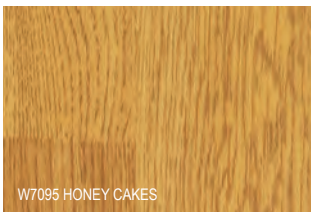
LONSPECK®

Lonspeck's pattern was designed with the right combination of speck size and sparsity to enhance spatial resolution for a better field of view. The Lonspeck pattern can help hide wear and tear, as well as conceal blemishes. This pattern adds detail to a room and brings character to an overall design.



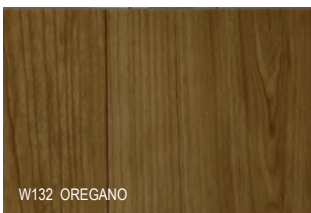
LONSTRAND

Lonstrand mimics a bark of a tree, which is harmonious with the earth and offers a sense of healing and tranquility. Lonstrand has multiple design purpose. It is subtle enough to provide a smooth transition between rooms and interesting enough to help emphasize a focal point. PHTHALATE FREE



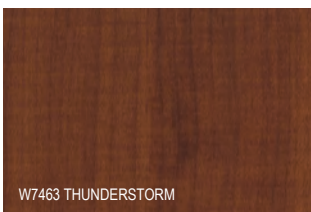
LONWOOD® DAKOTA

This durable, slightly textured sheet evokes the open grain of oak and the nuance of knot-free plank in warm and inviting colors. Lonwood® Dakota coordinates beautifully with Loneco® and is ideal for corporate and retail, as well as healthcare environments.



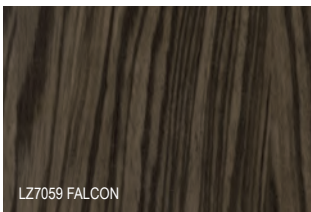
LONWOOD® MADERA

A wide-plank design, Lonwood® Madera features detailed graining that elegantly weaves around beautifully-rendered knotting. This extraordinarily realistic look is further enhanced by articulated plank lines resulting in a design that suggests the strength of old-world craftsmanship.



LONWOOD® NATURAL

Lonwood® Natural has a realistic maple wood image with striking color schemes taken directly from nature. It provides a room with a timeless design with soft grain patterning. Lonwood Natural has been a regular feature in healthcare, multi-family housing, and corporate settings.



LONZEBRA

The exciting pattern of African Zebrawood comes to life in Lonseal's Lonzebra collection, featuring a striated linear pattern that is not only visually extraordinary but also serves to mask dirt and other blemishes. Lonzebra offers clean and simple lines with a warm undertone.



Lonwood Natural #W7464 Summer Night & #W7459 Bark Dust
The Women's Center at Rockford Health System, Rockford, IL



Lonwood Natural #W7462 Gentle Wind & #W7466 Babbling Creek
Ocean Medical Pediatric Center, Brick, NJ



Lonzebra #LZ7068 African Sunset
ASB Bank Services, New Zealand



LONBEAD®

FEATURES *(sizes shown are nominal)*

Roll Width:	6 ft. (1.8 m)
Roll Length:	60 ft. (18.3 m)
Overall Thickness:	0.100 in. (2.5 mm)
Wear Layer Thickness:	0.036 in. (0.9 mm)
Weight:	0.8 lbs./sq. ft. (3.7 kg/m ²)

ASTM F1303 CLASSIFICATION:

Type I, Grade 1, Class B, Commercial Use

CERTIFIED: FloorScore®

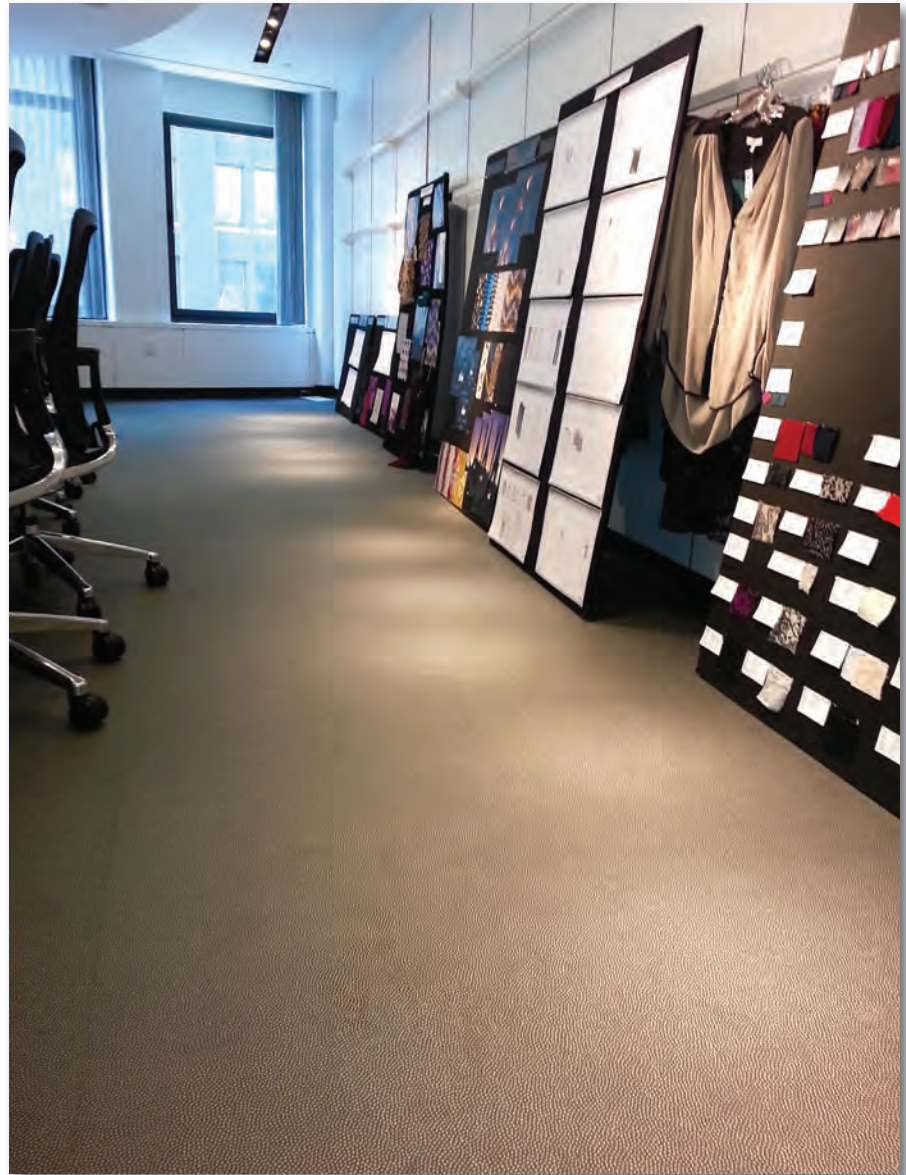
EXCLUSIVE LONSEAL® FORMULATIONS:

GreenAir® & GreenMedic®

LEEDv4/4.1 CONTRIBUTION B+C INTERIORS:

Environmental Product Declarations Option 1
Sourcing of Raw Materials Option 2
Low-Emitting Materials
Pre-Consumer (Post-Industrial) Recycled Content

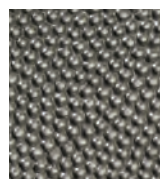
One of Lonseal's most striking offerings, **LONBEAD®** is a luxuriously textured surface consisting of an embossing of small bead-like drops that form a richly glossy and elegant design. The opulent color palette is timelessly chic and has enlivened numerous display, retail and hospitality spaces.



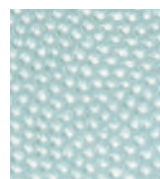
Lonbead #B303 Onyx - Li & Fung, New York City, NY



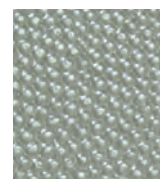
B301
OPAL*



B303
ONYX



B304
AQUAMARINE



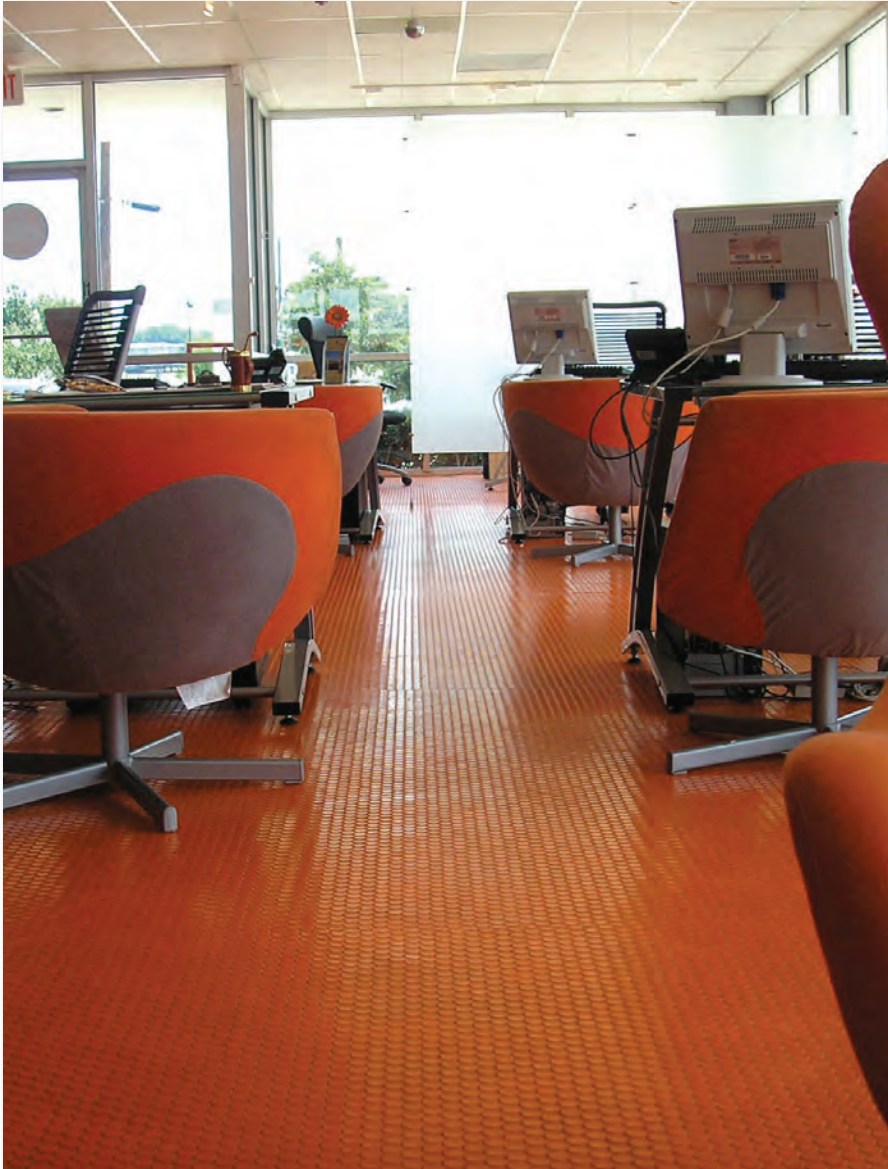
B305
MOONSTONE



B306
CHAMPAGNE
GARNET

** Due to the light color of #B301 Opal, Lonseal highly recommends the use of six coats of finish. More frequent maintenance procedures are necessary to ensure a long lasting installation. In addition, areas of prolonged UV exposure should be avoided to prevent unwanted discoloration of the flooring.*

One of Lonseal's pioneering designs in the field of slip-resistant embossing, LONCOIN® I has been demonstrating its outstanding resilience capabilities in high-traffic interiors for decades. With its nickel-sized coin stamping, Loncoin I offers stylish, low-maintenance flooring in two practical color options.



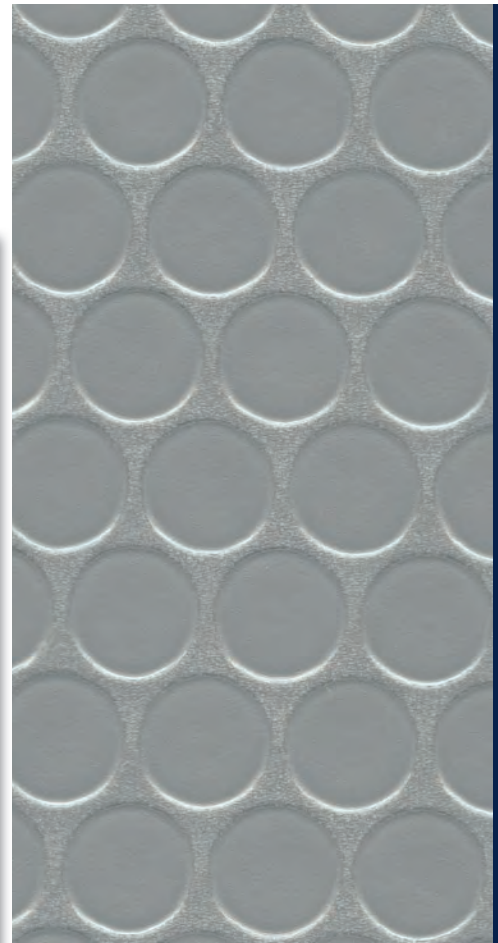
Loncoin I (custom-order color) - Drivers Select, Dallas, TX



C123
BLACK



C124
GRAY



EMBOSSED

LONCOIN® I

FEATURES *(sizes shown are nominal)*

Roll Width:	6 ft. (1.8 m)
Roll Length:	60 ft. (18.3 m)
Overall Thickness:	0.100 in. (2.5 mm)
Wear Layer Thickness:	0.032 in. (0.80 mm)
Weight:	0.8 lbs./sq. ft. (3.8 kg/m ²)

ASTM F1303 CLASSIFICATION:

Type I, Grade 1, Class B, Commercial Use

CERTIFIED: FloorScore®

EXCLUSIVE LONSEAL® FORMULATIONS:

GreenAir® & GreenMedic®

LEEDv4/4.1 CONTRIBUTION B+C INTERIORS:

- Environmental Product Declarations Option 1
- Sourcing of Raw Materials Option 2
- Low-Emitting Materials
- Pre-Consumer (Post-Industrial) Recycled Content



LONCOIN® II

FEATURES (sizes shown are nominal)

Roll Width:	6 ft. (1.8 m) OR 8 ft. (2.4 m)
Roll Length:	60 ft. (18.3 m)
Overall Thickness:	0.100 in. (2.5 mm)
Wear Layer Thickness:	0.036 in. (0.9 mm)
	0.032 in. (0.8 mm) CTB736
Weight:	0.8 lbs./sq. ft. (4.0 kg/m ²)

ASTM F1303 CLASSIFICATION:

Type I, Grade 1, Class B, Commercial Use

CERTIFIED: FloorScore®

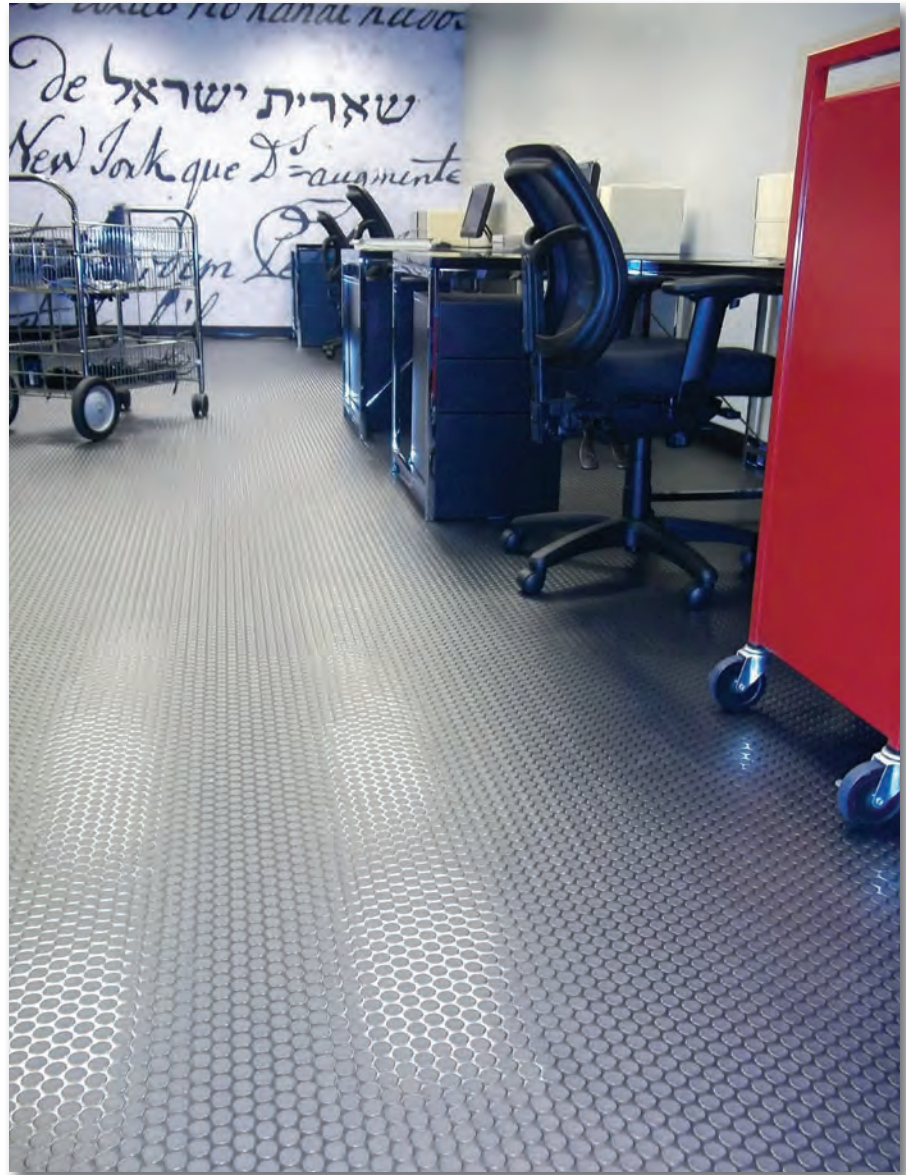
EXCLUSIVE LONSEAL® FORMULATIONS:

GreenAir® & GreenMedic®

LEEDv4/4.1 CONTRIBUTION B+C INTERIORS:

Environmental Product Declarations Option 1
Sourcing of Raw Materials Option 2
Low-Emitting Materials
Pre-Consumer (Post-Industrial) Recycled Content

The Loncoin series boasts a coin surface embossing that delivers a striking directional design a decorative touch that provides style, enhanced traction, functional, and hides scuffing. LONCOIN® II features a slight texture on the coin stamping which gives surface grip and helps mask scuffing.



Loncoin II #CN183 Sonic Gray - Jewish Heritage Center Computer Room, New York City, NY



CN181
NIMBUS GRAY



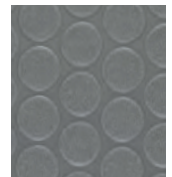
CN183
SONIC GRAY*



CN187
CERULEAN BLUE*



CN190
BIRCH WHITE



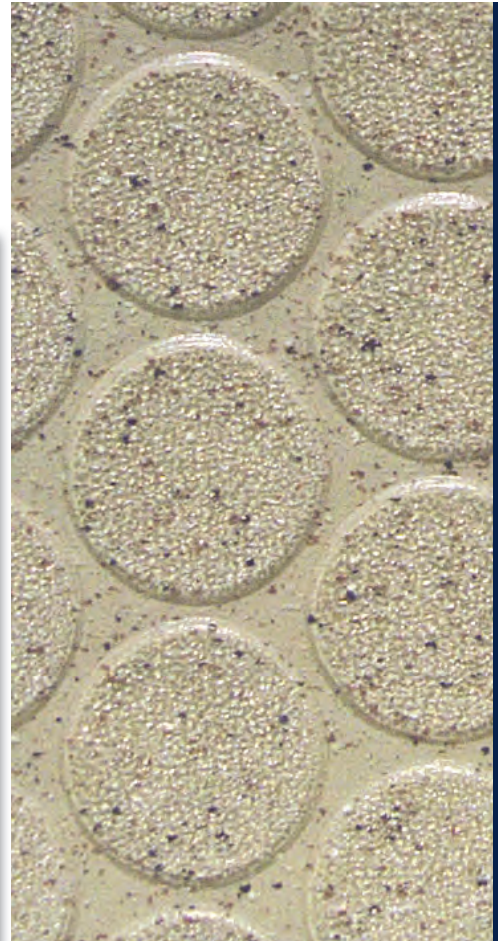
CTB736
STONE GRAY
(8FT. ONLY)

* #CN183 Sonic Gray and #CN187 Cerulean Blue are iridescent colors, and their shades will change depending on the viewing angle. Please request a sample swatch for color accuracy.

Taking advantage of its predecessors' embossing and texturing features, LONCOIN® II FLECKS adds multi-colored speckled patterning for enhanced character. The dazzling fleck coloration provides camouflage for simpler maintenance.



Loncoin II Flecks #C152 Sapphire



EMBOSS

LONCOIN® II FLECKS

FEATURES *(sizes shown are nominal)*

Roll Width:	6 ft. (1.8 m) or 8 ft. (2.4 m)
Roll Length:	60 ft. (18.3 m)
Overall Thickness:	0.100 in. (2.5 mm)
Wear Layer Thickness:	0.032 in. (0.8 mm)
Weight:	0.8 lbs./sq. ft. (3.9 kg/m ²)

ASTM F1303 CLASSIFICATION:

Type I, Grade 1, Class B, Commercial Use

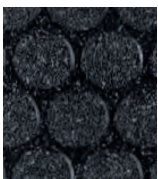
CERTIFIED: FloorScore®

EXCLUSIVE LONSEAL® FORMULATIONS:

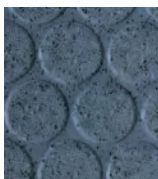
GreenAir® & GreenMedic®

LEEDv4/4.1 CONTRIBUTION B+C INTERIORS:

- Environmental Product Declarations Option 1
- Sourcing of Raw Materials Option 2
- Low-Emitting Materials
- Pre-Consumer (Post-Industrial) Recycled Content



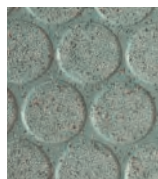
C150 (6 ft.)
C8150 (8 ft.)
ONYX*



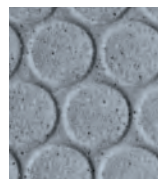
C152 (6 ft.)
C8152 (8 ft.)
SAPPHIRE*



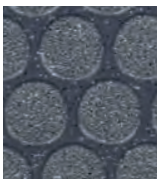
C154 (6 ft.)
C8154 (8 ft.)
SANDSTONE*



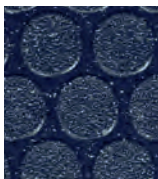
C155 (6 ft.)
JADE



C157 (6 ft.)
C8157 (8 ft.)
MOONSTONE*



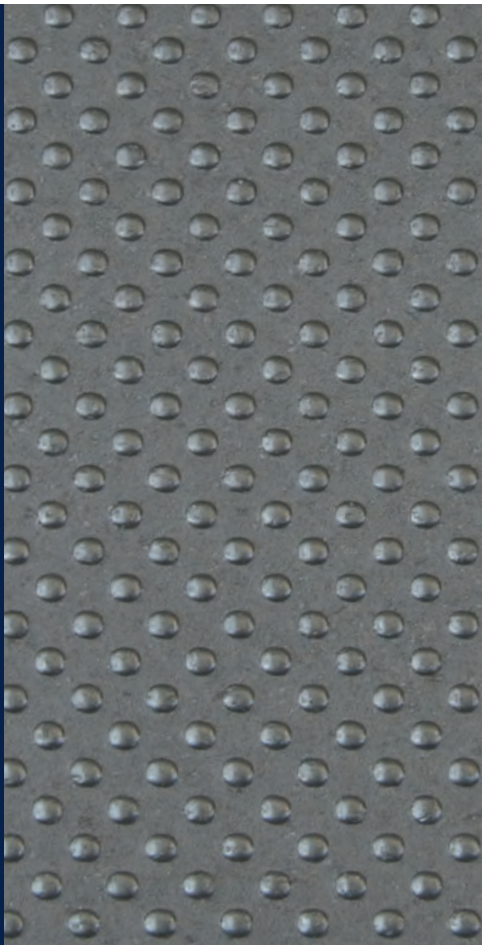
C158 (6')
SILICON



C159 (6')
SODALITE

*Please note that #C150 Onyx, #C152 Sapphire, #C154 Sandstone and #C157 Moonstone are available in both 6 ft. (1.83 m) and 8 ft. (2.44 m) rolls. All other colors are available in 6 ft. (1.83 m) rolls only unless custom ordered.

Note: Due to printing process limitations, printed colors may not match the actual product colors. If color match is critical, please request a sample at 800.832.7111 or 310.830.7111. For the most up-to-date color choices, go to LONSEAL.COM



The studded embossing and deeply saturated colors of LONPEARL® offer a stylishly textured surface with excellent camouflaging capabilities. Perfect for high-traffic retail areas as well as corporate spaces in search of a dynamic statement.

LONPEARL®

FEATURES (sizes shown are nominal)

- Roll Width: 6 ft. (1.8 m)
- Roll Length: 60 ft. (18.3 m)
- Overall Thickness: 0.100 in. (2.5 mm)
- Wear Layer Thickness: 0.032 in. (0.8 mm)
- Weight: 0.9 lbs./sq. ft. (4.2 kg/m²)

ASTM F1303 CLASSIFICATION:

Type I, Grade 1, Class B, Commercial Use

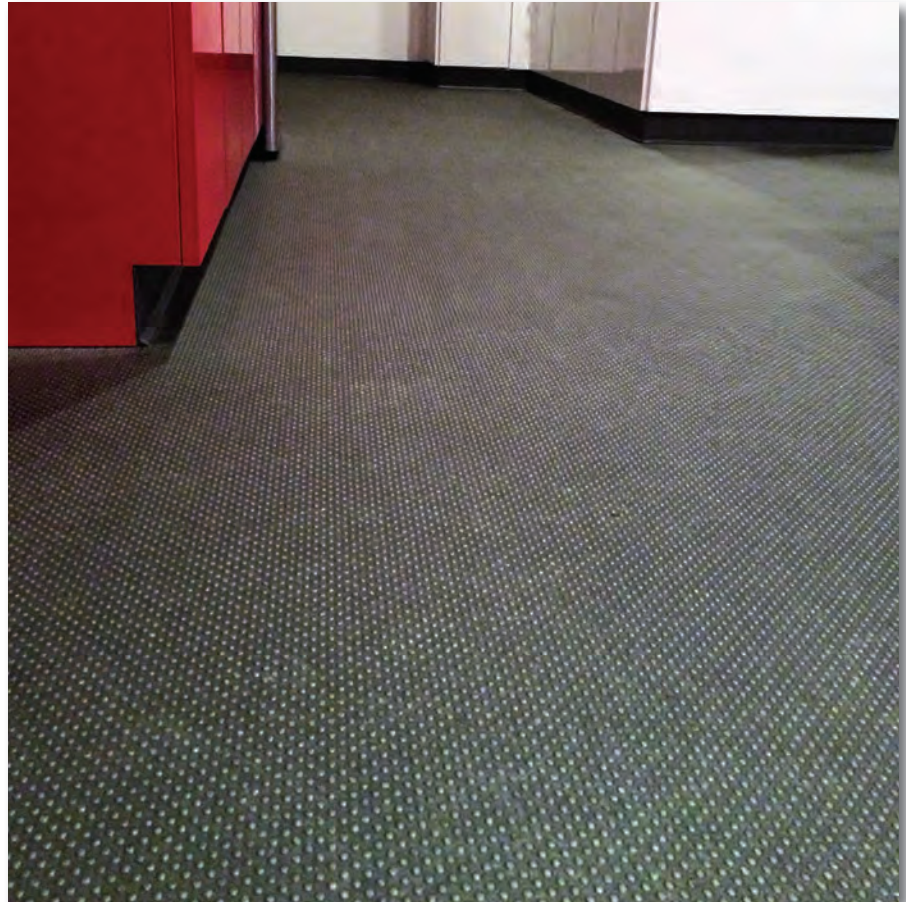
CERTIFIED: FloorScore®

EXCLUSIVE LONSEAL® FORMULATIONS:

GreenAir® & GreenMedic®

LEEDv4/4.1 CONTRIBUTION B+C INTERIORS:

- Environmental Product Declarations Option 1
- Sourcing of Raw Materials Option 2
- Low-Emitting Materials
- Pre-Consumer (Post-Industrial) Recycled Content



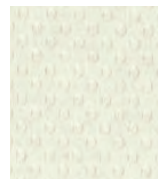
Lonpearl #P713 Baleen Gray - CycleBar, Cincinnati, OH



P712
CASPIAN MIST



P713
BALEEN GRAY



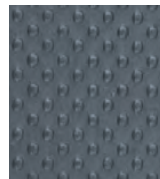
P714
ARCTIC WHITE*



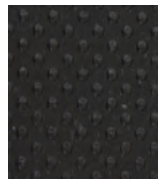
P715
ABALONE GREEN



P716
MARLIN SILVER



P717
ORCA BLUE



P718
ODESSA BLACK

** Due to the light color of #P714 Arctic White, more frequent maintenance procedures are necessary to ensure a long lasting installation. In addition, areas of prolonged UV exposure should be avoided to prevent unwanted discoloration of the flooring.*

LONPLATE® I offers the rugged endurance of classic steel plating. This durable resilient sheet flooring is Lonseal's toughest skid-resistant product. Perfect for heavy-duty applications in all kinds of interior spaces.



Lonplate I #P164 Gunmetal - Architect Firm, Grand Rapids, MI

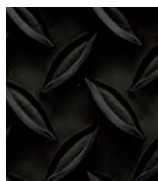


EMBOSSED

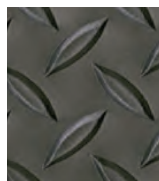
LONPLATE® I



P161
METALLIC GRAY



P163
BLACK



P164
GUNMETAL



P165
SAPPHIRE



P168
TITANIUM



P176
PEWTER

FEATURES *(sizes shown are nominal)*

Roll Width:	6 ft. (1.8 m)
Roll Length:	60 ft. (18.3 m)
Overall Thickness:	0.140 in. (3.5 mm)
Wear Layer Thickness:	0.068 in. (1.7 mm)
Wear Layer Thickness for P168 Titanium:	0.040 in. (0.8 mm)
Weight:	0.8 lbs./sq. ft. (3.7 kg/m ²)

ASTM F1303 CLASSIFICATION:

Type I, Grade 1, Class B, Commercial Use

CERTIFIED: FloorScore®

EXCLUSIVE LONSEAL® FORMULATIONS:

GreenAir® & GreenMedic®

LEEDv4/4.1 CONTRIBUTION B+C INTERIORS:

Environmental Product Declarations Option 1

Sourcing of Raw Materials Option 2

Low-Emitting Materials

EMBOSSED



LONPLATE® II

FEATURES (sizes shown are nominal)

- Roll Width: 6 ft. (1.8 m) or 8 ft. (2.4 m)
- Roll Length: 60 ft. (18.3 m)
- Overall Thickness 6 ft.: 0.120 in. (3.0 mm)
- Overall Thickness 8 ft.: 0.100 in. (2.5 mm)
- Wear Layer Thickness: 0.040 in. (1.0 mm)
- Weight 6 ft.: 0.8 lbs./sq. ft. (3.8 kg/m²)
- Weight 8 ft.: 0.6 lbs./sq. ft. (2.8 kg/m²)

ASTM F1303 CLASSIFICATION:
Type I, Grade 1, Class B, Commercial Use

CERTIFIED: FloorScore®

EXCLUSIVE LONSEAL® FORMULATIONS:
GreenAir® & GreenMedic®

LEEDv4/4.1 CONTRIBUTION B+C INTERIORS:
Environmental Product Declarations Option 1
Sourcing of Raw Materials Option 2
Low-Emitting Materials
Pre-Consumer (Post-Industrial) Recycled Content

Every bit as tough as the original, but with smaller embossing and wider spacing. LONPLATE® II offers a similar steel-plate pattern that combines the durability of industrial design with six deeply saturated colors.



Lonplate II #P424 Gunmetal - Architect Firm, New York City, NY



P411
PUTTY



P419TX
BRICK



P421 (6 ft.)
P8421 (8 ft.)
MICA*



P424
GUNMETAL



P424TX (6 ft.)
P8424TX (8 ft.)
GUNPOWDER*



P443
GUN BLACK



P443TXM (6 ft.)
P8443TXM (8 ft.)
MIDNIGHT*

* Please note that #P421 Mica, #P424TX Gunpowder and #P443TXM Midnight are available in both 6 ft. (1.83 m) and 8 ft. (2.438 m) rolls (8' ft. rolls have a thinner gage of 2.0 mm thickness). All other colors are available in 6 ft. (1.83 m) rolls only unless custom ordered.

LONPLATE® PATINA is resilient sheet vinyl surface with high-tech metallic coloring and a classic diamond plate embossing. The exclusive galvanized coloration provides excellent camouflage for scuffing and wear pairing the aesthetics of iron with ease of resilient flooring maintenance. Great for providing a high-tech industrial look.



Lonplate Patina #P537 Palace Gray



P537
PALACE GRAY



P538
EMPIRE SILVER



EMBOSSED

LONPLATE® PATINA

FEATURES *(sizes shown are nominal)*

Roll Width:	6 ft. (1.8 m)
Roll Length:	60 ft. (18.3 m)
Overall Thickness:	0.140 in. (3.5 mm)
Wear Layer Thickness:	0.032 in. (0.8 mm)
Weight:	0.8 lbs./sq. ft. (4.1 kg/²)

ASTM F1303 CLASSIFICATION:

Type I, Grade 1, Class B, Commercial Use

CERTIFIED: FloorScore®

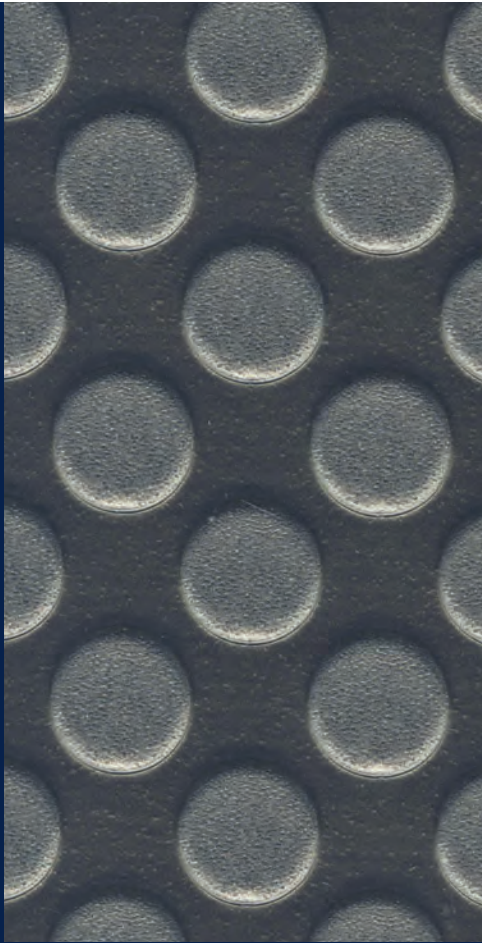
EXCLUSIVE LONSEAL® FORMULATIONS:

GreenAir® & GreenMedic®

LEEDv4/4.1 CONTRIBUTION B+C INTERIORS:

- Environmental Product Declarations Option 1
- Sourcing of Raw Materials Option 2
- Low-Emitting Materials
- Pre-Consumer (Post-Industrial) Recycled Content

EMBOSS



LONPOINT® MOONWALK

FEATURES *(sizes shown are nominal)*

- Roll Width: 6 ft. (1.8 m)
- Roll Length: 60 ft. (18.3 m)
- Overall Thickness: 0.080 in. (2.0 mm)
- Wear Layer Thickness: 0.032 in. (0.8 mm)
- Weight: 0.7 lbs./sq. ft. (3.3 kg/m²)

ASTM F1303 CLASSIFICATION:

Type I, Grade 1, Class B, Commercial Use

CERTIFIED: FloorScore®

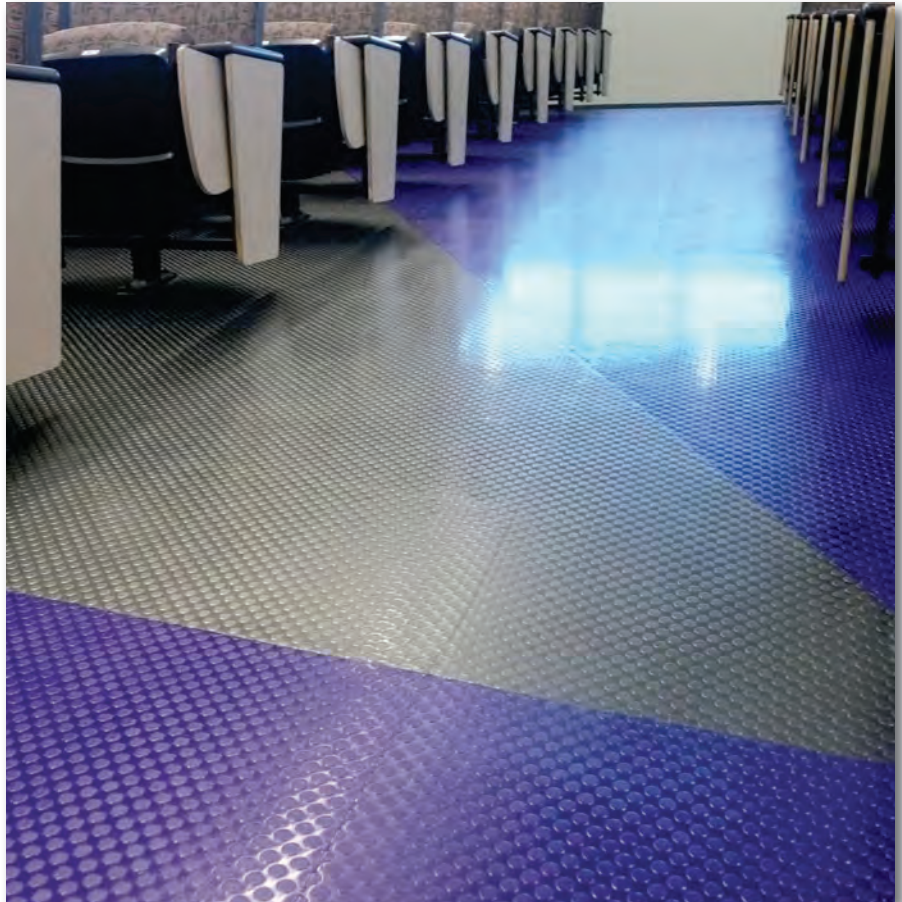
EXCLUSIVE LONSEAL® FORMULATIONS:

GreenAir® & GreenMedic®

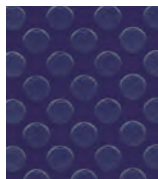
LEEDv4/4.1 CONTRIBUTION B+C INTERIORS:

- Environmental Product Declarations Option 1
- Sourcing of Raw Materials Option 2
- Low-Emitting Materials
- Pre-Consumer (Post-Industrial) Recycled Content

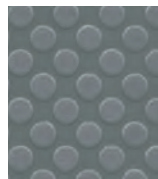
LONPOINT® MOONWALK is similar to our Loncoin series, but is distinguished by smaller (half-inch diameter) and more widely-spaced coin stamping. The slip-resistance feature makes it ideal for busy traffic areas like break rooms and hallways while the intriguing color scheme adds a distinctive designer touch.



Lonpoint Moonwalk #P345 Blue and #P354 Graphite - Santiago Canyon College, Orange, CA



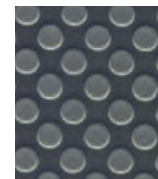
P345
BLUE



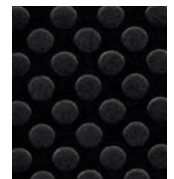
P348
SLATE



P351
PLATINUM



P352
SAPPHIRE*



P353
BLACK



P354
GRAPHITE*

** #P352 Sapphire and #P354 Graphite are iridescent colors, and their shades will change depending on the viewing angle. Please request a sample swatch for color accuracy.*

Featuring one of the warmest, yet boldest palettes that Lonseal has ever offered. **LONDANTE® TOPSEAL** is a resilient sheet flooring that comes in seven intriguing colors and features a hypnotic cross-hatch pattern that imparts a distinctly Italian flavor to any interior space, from corporate offices to hospitality spaces to healthcare patient rooms. Londante is **PHTHALATE FREE** and also features Lonseal's exclusive **Topseal** formulation. See page 3 for more information on **Topseal**.



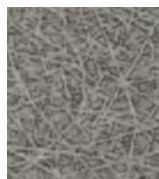
Londante #LD205 Verde and #LD201 Blanca



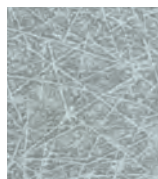
LD200
LATTE



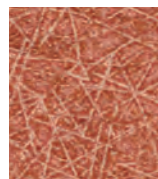
LD201
BLANCA



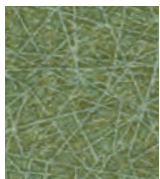
LD202
TEMPESTA



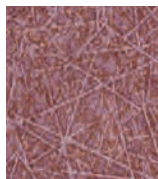
LD203
CELESTE



LD204
TERRACOTTA



LD205
VERDE



LD206
VIOLA



SMOOTH

LONDANTE® Topseal

FEATURES *(sizes shown are nominal)*

Roll Width:	6 ft. (1.8 m)
Roll Length:	60 ft. (18.3 m)
Overall Thickness:	0.080 in. (2.0 mm)
Wear Layer Thickness:	0.020 in. (0.5 mm)
Weight:	0.7 lbs./sq. ft. (3.3 kg/m ²)

ASTM F1303 CLASSIFICATION:

Type I, Grade 1, Class B, Commercial Use

CERTIFIED: FloorScore®

PHTHALATE FREE

EXCLUSIVE LONSEAL® FORMULATIONS:

Topseal, GreenAir® & GreenMedic®

LEEDv4/4.1 CONTRIBUTION B+C INTERIORS:

Environmental Product Declarations Option 1
Sourcing of Raw Materials Option 2
Low-Emitting Materials

SMOOTH



As Lonseal's foremost eco-friendly product, LONECO® TOPSEAL is composed of 50% recycled content and features Lonseal's exclusive GreenAir® technology that reduces VOC emissions and contributes to superior indoor air quality. Additionally, Loneco's organic and earthy colors easily conceal scuffing and soil. Loneco® comes standard with Lonseal's exclusive Topseal formulation, a factory-applied urethane finish that protects the floor, reduces scuffing and simplifies routine maintenance. See page 3 for more information on Topseal.



Loneco #E7215 Sea Coast - Norton Sound Hospital, Nome, AK

LONECO® Topseal

FEATURES (sizes shown are nominal)

- Roll Width: 6 ft. (1.8 m)
- Roll Length: 60 ft. (18.3 m)
- Overall Thickness: 0.080 in. (2.0 mm)
- Wear Layer Thickness: 0.032 in. (0.8 mm)
- Weight: 0.6 lbs./sq. ft. (2.8 kg/m²)

ASTM F1303 CLASSIFICATION:

Type I, Grade 1, Class B, Commercial Use

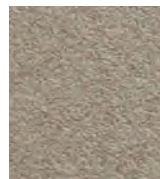
CERTIFIED: FloorScore®

EXCLUSIVE LONSEAL® FORMULATIONS:

Topseal, GreenAir® & GreenMedic®

LEEDv4/4.1 CONTRIBUTION B+C INTERIORS:

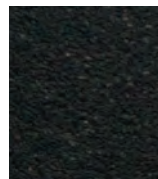
- Environmental Product Declarations Option 1
- Sourcing of Raw Materials Option 2
- Low-Emitting Materials
- Pre-Consumer (Post-Industrial) Recycled Content



E7211
ICE CAP



E7212
SANDALWOOD



E7213
MIDNIGHT SKY



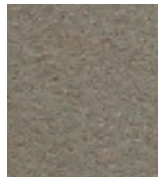
E7215
SEA COAST



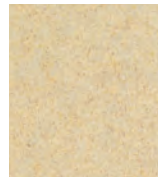
E7216
MINT



E7218
COPPER



E7219
MICA



E7225
CHAMOMILE



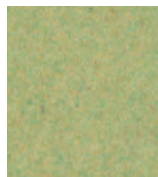
E7227
SASSAFRAS



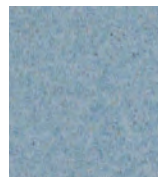
E7228
INCENSE



E7230
SACHET



E7231
DEW DROP



E7232
BLUEBELL



E7233
LAVENDER



E7234
SAND DUNE



E7235
ADOBE

Utilizing the same formulation of 50% recycled content as Lonseal's popular Loneco® line, **LONECO® LINEN TOPSEAL** features a loose woven design that gives a hip, stylish touch to any interior space. An abstracted take on a fabric look, Loneco® Linen suggests the delicacy of cloth while its hue variations and slightly stubbed texture provide strength and durability. Loneco® Linen also features Lonseal's exclusive Topseal formulation. See page 3 for more information on Topseal.



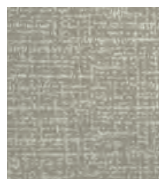
Loneco® Linen #EL333 Ash - UCLA Rolling Hills Women's Imaging Center - Palos Verdes, CA



EL330
ECRU



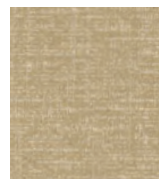
EL331
OATMEAL



EL332
HEATHER



EL333
ASH



EL334
WHEAT



EL335
ARTICHOKE



EL336
PORPOISE

LONECO® LINEN Topseal

FEATURES *(sizes shown are nominal)*

Roll Width:	6 ft. (1.8 m)
Roll Length:	60 ft. (18.3 m)
Overall Thickness:	0.080 in. (2.0 mm)
Wear Layer Thickness:	0.020 in. (0.5 mm)
Weight:	0.6 lbs./sq. ft. (3.1 kg/m ²)

ASTM F1303 CLASSIFICATION:

Type I, Grade 1, Class B, Commercial Use

CERTIFIED: FloorScore®

EXCLUSIVE LONSEAL® FORMULATIONS:

Topseal, GreenAir® & GreenMedic®

LEEDv4/4.1 CONTRIBUTION B+C INTERIORS:

Environmental Product Declarations Option 1
Sourcing of Raw Materials Option 2
Low-Emitting Materials
Pre-Consumer (Post-Industrial) Recycled Content

SMOOTH



LONFLOOR® GALVANIZED Topseal

FEATURES *(sizes shown are nominal)*

Roll Width:	6 ft. (1.8 m)
Roll Length:	60 ft. (18.3 m)
Overall Thickness:	0.080 in. (2.0 mm)
Wear Layer Thickness:	0.032 in. (0.8 mm)
Weight:	0.6 lbs./sq. ft. (3.0 kg/m ²)

ASTM F1303 CLASSIFICATION:

Type I, Grade 1, Class B, Commercial Use

CERTIFIED: FloorScore®

EXCLUSIVE LONSEAL® FORMULATIONS:

Topseal, GreenAir® & GreenMedic®

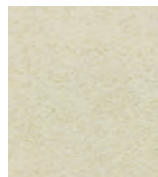
LEEDv4/4.1 CONTRIBUTION B+C INTERIORS:

Environmental Product Declarations Option 1
Sourcing of Raw Materials Option 2
Low-Emitting Materials
Pre-Consumer (Post-Industrial) Recycled Content

LONFLOOR® GALVANIZED takes on the look of galvanized metal in a simpler, more industrial direction. The subtle color choices offer warmth, while the stone-like aesthetic has a polished, sophisticated appeal. Lonfloor Galvanized also features Lonseal's exclusive Topseal formulation. *See page 3 for more information on Topseal.*



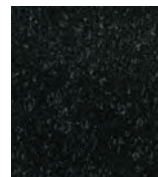
Lonfloor Galvanize Topseal #F7244 Graphite



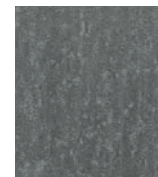
F7240
WHITE DIAMOND*



F7241
PLATINUM



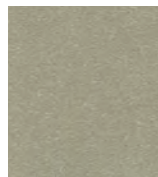
F7243
BLACK PEARL



F7244
GRAPHITE



F7247
GRANITE



F7264
BRASS

** Due to the light color of #F7240 White Diamond, more frequent maintenance procedures are necessary to ensure a long lasting installation. In addition, areas of prolonged UV exposure should be avoided to prevent unwanted discoloration of the flooring.*

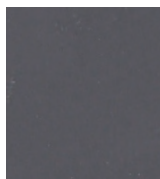
The simplicity of LONFLOOR® PLAIN's smooth-as-mercury surface and subdued color palette give it infinite application possibilities. Its classic elegance can instantly upgrade the most humble interior or put the finishing touch on any high-end space.



Lonfloor Plain #F35 Night



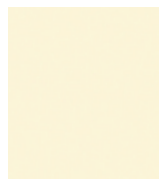
F04
BUFF



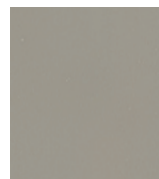
F09
STONE



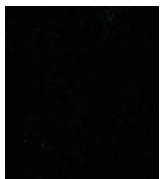
F25
FOG



F30
PARCHMENT*



F31
CONCRETE



F35
NIGHT

** Due to the light color of #F30 Parchment, more frequent maintenance procedures are necessary to ensure a long lasting installation. In addition, areas of prolonged UV exposure should be avoided to prevent unwanted discoloration of the flooring.*

Note: Due to printing process limitations, printed colors may not match the actual product colors. If color match is critical, please request a sample at 800.832.7111 or 310.830.7111. For the most up-to-date color choices, go to LONSEAL.COM

SMOOTH

LONFLOOR® PLAIN

FEATURES (sizes shown are nominal)

Roll Width:	6 ft. (1.8 m)
Roll Length:	60 ft. (18.3 m)
Overall Thickness:	0.100 in. (2.5 mm)
Wear Layer Thickness:	0.032 in. (0.8 mm)
Weight:	0.7 lbs./sq. ft. (3.6 kg/m ²)

ASTM F1303 CLASSIFICATION:

Type I, Grade 1, Class B, Commercial Use

CERTIFIED: FloorScore®

EXCLUSIVE LONSEAL® FORMULATIONS:

Topseal, GreenAir® & GreenMedic®

LEEDv4/4.1 CONTRIBUTION B+C INTERIORS:

Environmental Product Declarations Option 1
Sourcing of Raw Materials Option 2
Low-Emitting Materials



Loneco Topseal E7234 Sand Dune



Lonmoire Topseal M51 Blanc



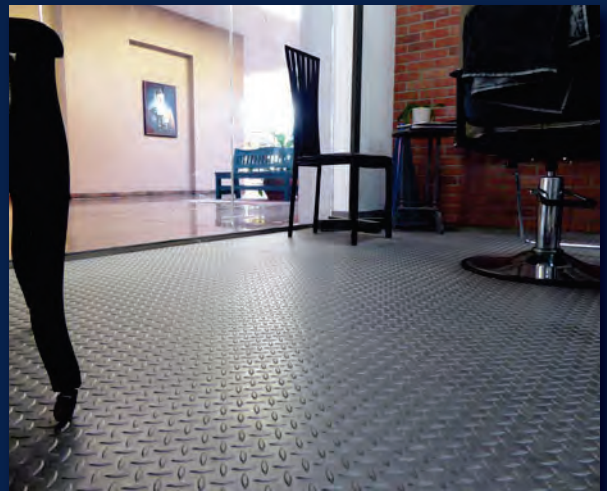
Loneco Linen Topseal EL330 Ecru and EL331 Oatmeal
Lonwood Natural W7462 Gentle Wind



Lonspeck Topseal SX118 Vanilla Bean



Lonpoint Moonwalk P354 Graphite



Lonplate I P161 Metallic Gray



Lonplate II P421 Mica



Lonwood Natural W7467 Singing Birds



Lonwood Performa W547 Sable



Lonstrand Topseal SD252 Spanish Chestnut

The urban flavor of LONMETRO® UV fuses three colors with a UV-cured (urethane) protection layer that minimizes maintenance. Lonmetro UV shakes up the look of any space, but particularly those in retail, display and showrooms.

LONMETRO® UV

FEATURES *(sizes shown are nominal)*

Roll Width:	6 ft. (1.8 m)
Roll Length:	60 ft. (18.3 m)
Overall Thickness:	0.080 in. (2.0 mm)
Wear Layer Thickness:	0.032 in. (0.8 mm)
Wear Layer Thickness	
M668UV Loading Zone:	0.018 in. (0.45 mm)
Weight:	0.6 lbs./sq. ft. (2.8 kg/m ²)

CERTIFIED: FloorScore®

EXCLUSIVE LONSEAL® FORMULATIONS:
GreenAir® & GreenMedic®

LEEDv4/4.1 CONTRIBUTION B+C INTERIORS:

Environmental Product Declarations Option 1
Sourcing of Raw Materials Option 2
Low-Emitting Materials
Pre-Consumer (Post-Industrial) Recycled Content



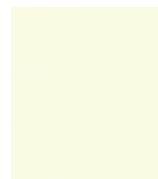
Lonmetro UV #M660UV Fire Hydrant - Showroom, Chicago, IL



M660UV
FIRE HYDRANT



M662UV
BLACK LIMO

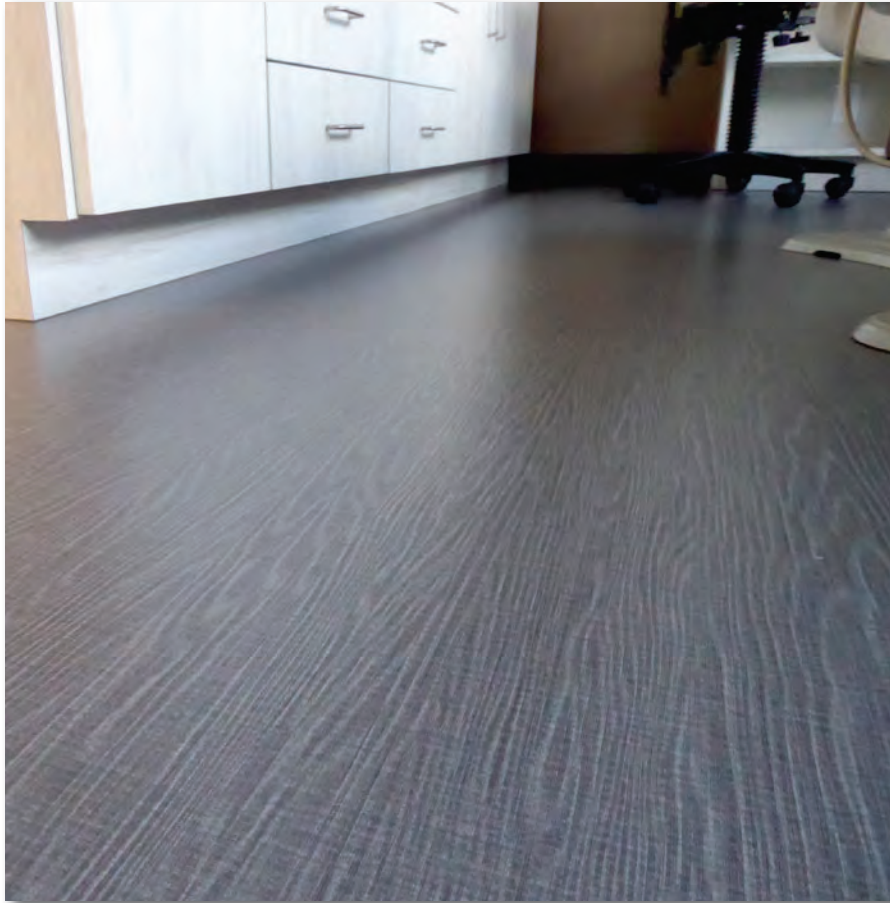


M668UV
LOADING ZONE*

** Due to the light color of #M668UV Loading Zone, more frequent maintenance procedures are necessary to ensure a long lasting installation. In addition, areas of prolonged UV exposure should be avoided to prevent unwanted discoloration of the flooring.*

LONMOIRE® TOPSEAL's wood grain pattern has the characteristics of watery waves of lines. This ripple design was once coveted by queens. It distinguishes the centuries-old pattern that now gives everyday commercial spaces a genteel touch. Lonmoire is PHTHALATE FREE and also features Lonseal's exclusive Topseal formulation.

See page 3 for more information on Topseal.



Lonmoire #M54 Gris - Endodontist Office - Minneapolis, MN



M51
BLANC



M52
VERGE D'OR



M53
D'OR



M54
GRIS



M55
NOIR



M56
BRUN



SMOOTH

LONMOIRE® Topseal

FEATURES (sizes shown are nominal)

Roll Width:	6 ft. (1.8 m)
Roll Length:	60 ft. (18.3 m)
Overall Thickness:	0.080 in. (2.0 mm)
Wear Layer Thickness:	0.020 in. (0.5 mm)
Weight:	0.7 lbs./sq. ft. (3.3 kg/m ²)

ASTM F1303 CLASSIFICATION:

Type I, Grade 1, Class B, Commercial Use

CERTIFIED: FloorScore®

PHTHALATE FREE

EXCLUSIVE LONSEAL® FORMULATIONS:

Topseal, GreenAir® & GreenMedic®

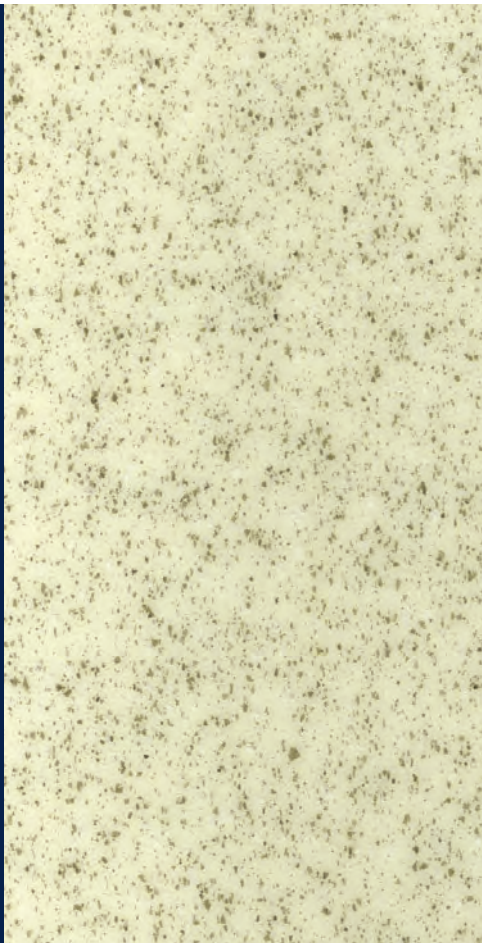
LEEDv4/4.1 CONTRIBUTION B+C INTERIORS:

Environmental Product Declarations Option 1

Sourcing of Raw Materials Option 2

Low-Emitting Materials

SMOOTH



LONSPECK® TOPSEAL is a traditional blend of contrasting colors that adds interest and dimension, while the speckling design helps masks daily wear and tear commercial flooring endures. In addition to black and gray, the specks appear against tan, beige and cream backgrounds, as well as “new neutrals” pale yellow and a shade of blue. A flexible option in commercial spaces including healthcare and education facilities. Lonspeck also features Lonseal’s exclusive Topseal formulation. See page 3 for more information on Topseal.

LONSPECK® Topseal

FEATURES (sizes shown are nominal)

- Roll Width: 6 ft. (1.8 m)
- Roll Length: 60 ft. (18.3 m)
- Overall Thickness: 0.080 in. (2.0 mm)
- Wear Layer Thickness: 0.028 in. (0.7 mm)
- Weight: 0.6 lbs./sq. ft. (3.1 kg/m²)

ASTM F1303 CLASSIFICATION:

Type I, Grade 1, Class B, Commercial Use

CERTIFIED: FloorScore®

EXCLUSIVE LONSEAL® FORMULATIONS:

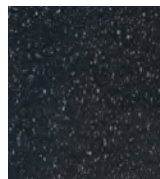
Topseal, GreenAir® & GreenMedic®

LEEDv4/4.1 CONTRIBUTION B+C INTERIORS:

- Environmental Product Declarations Option 1
- Sourcing of Raw Materials Option 2
- Low-Emitting Materials



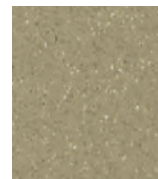
Lonspeck Topseal #SX112 Magnetic Gray and #SX117 Hale Navy - George Jackson Academy, New York City, NY (photo courtesy of Rise Projects LLC)



SX111
TWILIGHT ZONE



SX112
MAGNETIC GRAY



SX113
ROCKY BEACH



SX114
TAMARIND



SX115
SANDSTORM



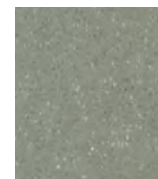
SX116
WHITE PEPPER



SX117
HALE NAVY



SX118
VANILLA BEAN



SX119
PIGEON GRAY

LONSTRAND TOPSEAL mimics a bark of a tree, which gives a harmonious relationship with the earth and offers a sense of healing and tranquility. The long, fibrous-like strands can visually expand a space. Lonstrand has multiple design purpose. It is subtle enough to provide a smooth transition between rooms and interesting enough to help emphasize a focal point. Lonstrand is PHTHALATE FREE and also features Lonseal's exclusive Topseal formulation. See page 3 for more information on Topseal.



Lonstrand Topseal #SD257 Gray Wolf



SMOOTH

LONSTRAND Topseal

FEATURES (sizes shown are nominal)

Roll Width:	6 ft. (1.8 m)
Roll Length:	60 ft. (18.3 m)
Overall Thickness:	0.080 in. (2.0 mm)
Wear Layer Thickness:	0.020 in. (0.5 mm)
Weight:	0.7 lbs./sq. ft. (3.2 kg/m ²)

ASTM F1303 CLASSIFICATION:

Type I, Grade 1, Class B, Commercial Use

CERTIFIED: FloorScore®

PHTHALATE FREE

EXCLUSIVE LONSEAL® FORMULATIONS:
Topseal, GreenAir® & GreenMedic®

LEEDv4/4.1 CONTRIBUTION B+C INTERIORS:

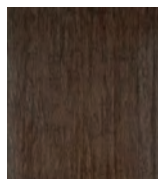
Environmental Product Declarations Option 1
Sourcing of Raw Materials Option 2
Low-Emitting Materials



SD251
TOASTED BAGEL



SD252
SPANISH CHESTNUT



SD253
COLOMBIAN ROAST



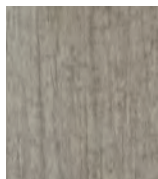
SD254
OILED TEAK



SD255
OLIVE BRANCH



SD256
WINTER TRAIL



SD257
GRAY WOLF



SD258
BLACK LAVA

SMOOTH



LONWOOD® DAKOTA TOPSEAL is a slightly textured sheet that evokes the open grain of oak and the nuance of knot-free, quarter-sawn plank. Ideal for corporate, healthcare, retail and hospitality applications. Lonwood Dakota comes standard with Lonseal's exclusive Topseal formulation. See page 3 for more information on Topseal.

This product contains partial "boards" at both edges. This selvage should be removed to assure an aesthetically pleasing transition from sheet to sheet. The selvage width can vary depending on the lot.



Lonwood Dakota #W7093 Marshmallow and #W7077 Natural Oak
Prebys Cardiovascular Institute Scripps Memorial Hospital, La Jolla, CA (HOK Los Angeles)

LONWOOD® DAKOTA Topseal

FEATURES (sizes shown are nominal)

- Roll Width: 6 ft. (1.8 m)
- Roll Length: 60 ft. (18.3 m)
- Overall Thickness: 0.080 in. (2.0 mm)
- Wear Layer Thickness: 0.020 in. (0.5 mm)
- Weight: 0.6 lbs./sq. ft. (3.1 kg/m²)

ASTM F1303 CLASSIFICATION:

Type I, Grade 1, Class B, Commercial Use

CERTIFIED: FloorScore®

EXCLUSIVE LONSEAL® FORMULATIONS:

Topseal, GreenAir® & GreenMedic®

LEEDv4/4.1 CONTRIBUTION B+C INTERIORS:

- Environmental Product Declarations Option 1
- Sourcing of Raw Materials Option 2
- Low-Emitting Materials
- Pre-Consumer (Post-Industrial) Recycled Content



W7077
NATURAL OAK



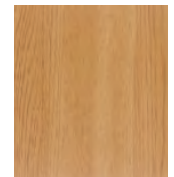
W7078
AMBER



W7079
CHERRY



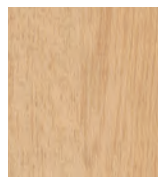
W7081
BURGUNDY



W7082
GOLDEN OAK



W7083
PLATINUM MIST



W7084
ISLAND WHITE



W7087
EBONY



W7088
PARLOR OAK



W7089
WARM TEA



W7093
MARSHMALLOW



W7094
TOASTED ALMOND



W7095
HONEY CAKES

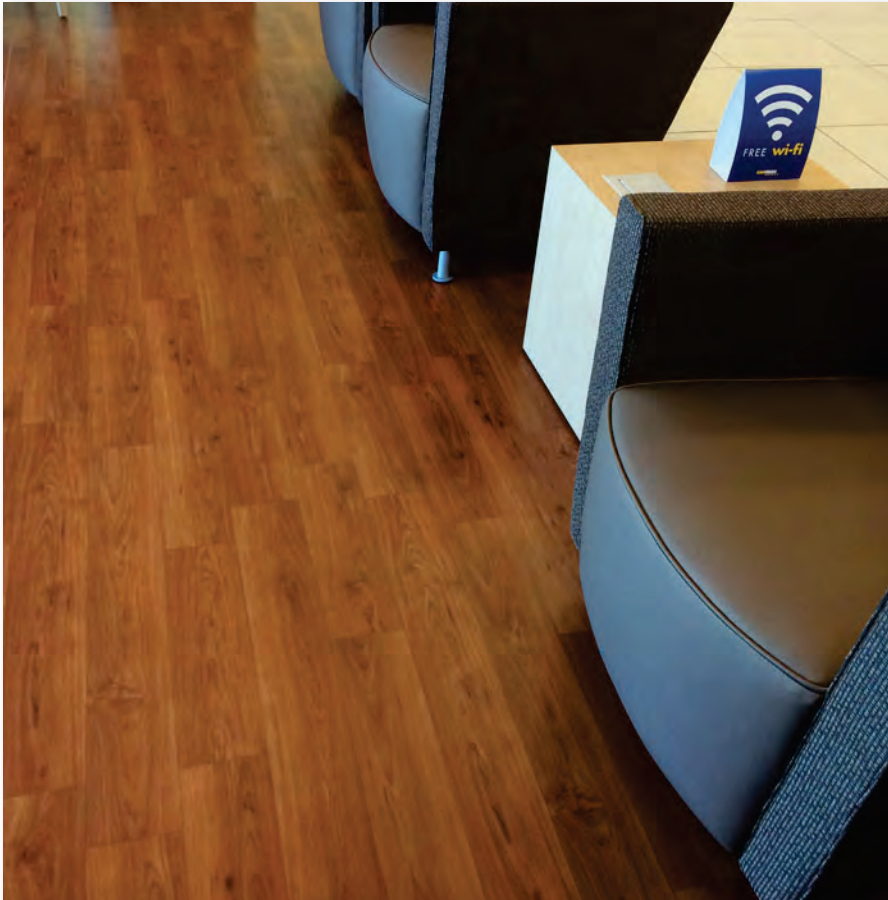


W7096
PUMPKIN PIE

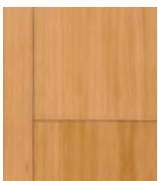


W7097
HOT CHOCOLATE

A wide-plank design, LONWOOD® MADERA TOPSEAL features detailed graining that weaves around beautifully-rendered knotting. This realistic look is further enhanced by articulated plank lines resulting in a design that suggests the strength of old-world craftsmanship paired with the crisp, clean lines of contemporary living. Madera's plank lengths are 32 in. and 16 in., with a plank width of 4.75± in. Lonwood Madera comes standard with Lonseal's exclusive Topseal formulation. See page 3 for more information on Topseal.



Lonwood Madera Topseal #W134 Brandy



W130
SHORTBREAD



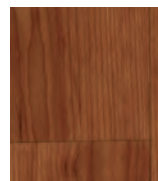
W131
PORTOBELLO



W132
OREGANO



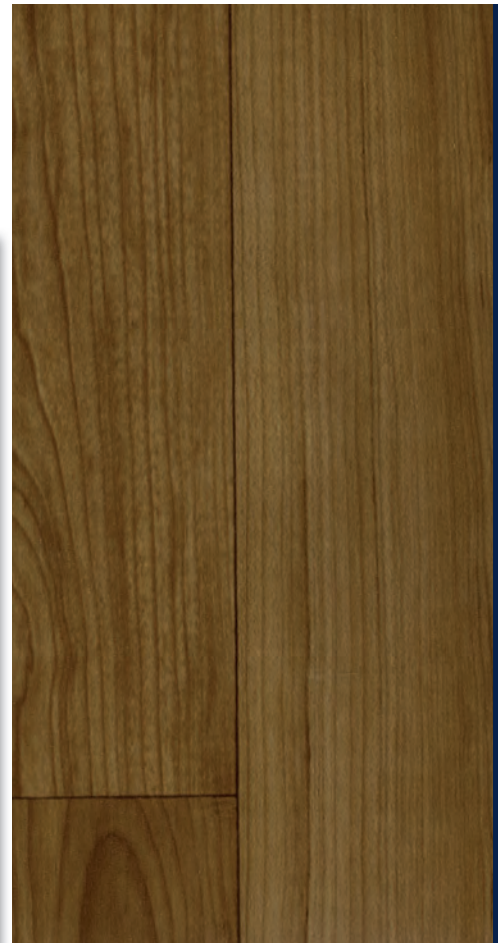
W133
CARMEL



W134
BRANDY



W135
COCOA



SMOOTH

LONWOOD® MADERA Topseal

FEATURES (sizes shown are nominal)

Roll Width:	6 ft. (1.8 m)
Roll Length:	60 ft. (18.3 m)
Overall Thickness:	0.080 in. (2.0 mm)
Wear Layer Thickness:	0.020 in. (0.5 mm)
Weight:	0.6 lbs./sq. ft. (3.1 kg/m ²)

ASTM F1303 CLASSIFICATION:

Type I, Grade 1, Class B, Commercial Use

CERTIFIED: FloorScore®

EXCLUSIVE LONSEAL® FORMULATIONS:

Topseal, GreenAir® & GreenMedic®

LEEDv4/4.1 CONTRIBUTION B+C INTERIORS:

- Environmental Product Declarations Option 1
- Sourcing of Raw Materials Option 2
- Low-Emitting Materials
- Pre-Consumer (Post-Industrial) Recycled Content

LONWOOD® NATURAL TOPSEAL pairs the timeless aesthetics of wood with the benefits of high-performance sheet vinyl in colors that range from earthy to quirky. Its soft grain patterning and smooth surface make Lonwood Natural ideal for those who want the warmth of wood with easier maintenance. Lonwood Natural comes standard with Lonseal's exclusive **Topseal** formulation. See page 3 for more information on **Topseal**.



Lonwood Natural #W7462 Gentle Wind - Texas Childrens Hospital, Houston, TX

LONWOOD® NATURAL Topseal

FEATURES *(sizes shown are nominal)*

Roll Width:	6 ft. (1.8 m)
Roll Length:	60 ft. (18.3 m)
Overall Thickness:	0.080 in. (2.0 mm)
Wear Layer Thickness:	0.020 in. (0.5 mm)
Weight:	0.6 lbs./sq. ft. (3.1 kg/m ²)

ASTM F1303 CLASSIFICATION:

Type I, Grade 1, Class B, Commercial Use

CERTIFIED: FloorScore®

EXCLUSIVE LONSEAL® FORMULATIONS:

Topseal, GreenAir® & GreenMedic®

LEEDv4/4.1 CONTRIBUTION B+C INTERIORS:

Environmental Product Declarations Option 1
Sourcing of Raw Materials Option 2
Low-Emitting Materials
Pre-Consumer (Post-Industrial) Recycled Content



W7452
MAPLE SYRUP



W7453
PRAIRIE



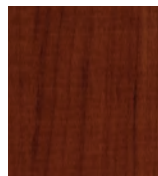
W7455
NUTSHELL



W7456
QUAIL EGGS



W7457
BUCKWHEAT



W7458
BRIAR ROOT



W7459
BARK DUST



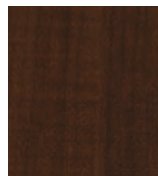
W7461
WHISPER



W7462
GENTLE WIND



W7463
THUNDERSTORM



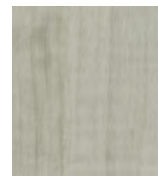
W7464
SUMMER NIGHT



W7465
RAINFALL



W7466
BABBLING CREEK



W7467
SINGING BIRDS

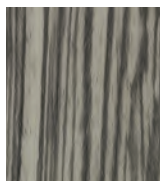
LONZEBRA TOPSEAL's striated linear pattern is not only visually extraordinary but also serves to mask dirt and other blemishes. The exotic colors and patterning are striking on their own but also have exciting pairing potential with other Lonseal Topseal products. Lonzebra comes standard with Lonseal's exclusive Topseal formulation. See page 3 for more information on Topseal.



Lonzebra Topseal #LZ7066 Bark - Child Development Center, 29 Palms, CA



LZ7059
FALCON



LZ7060
TWILIGHT



LZ7061
RAVEN



LZ7063
SAVANNA



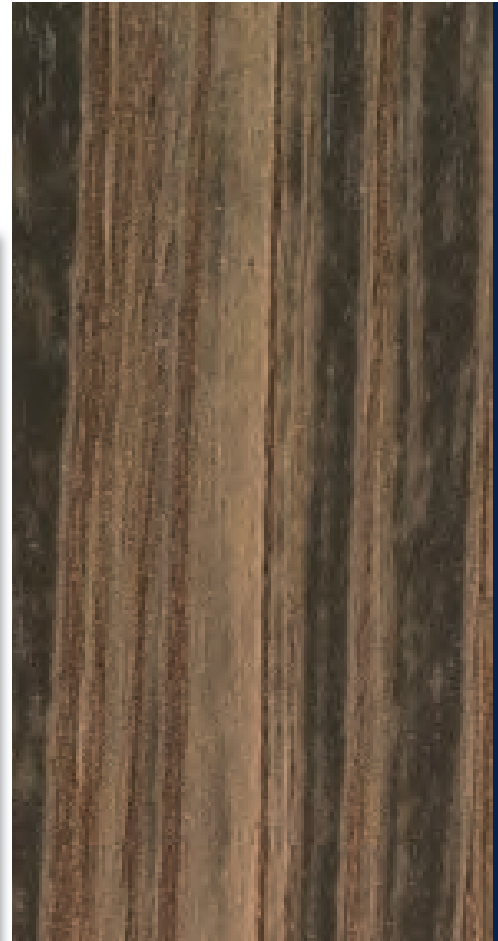
LZ7066
BARK



LZ7068
AFRICAN SUNSET



LZ7069
SIENNA PLAINS



SMOOTH

LONZEBRA Topseal

FEATURES (sizes shown are nominal)

Roll Width:	6 ft. (1.8 m)
Roll Length:	60 ft. (18.3 m)
Overall Thickness:	0.080 in. (2.0 mm)
Wear Layer Thickness:	0.020 in. (0.5 mm)
Weight:	0.6 lbs./sq. ft. (3.0 kg/m ²)

ASTM F1303 CLASSIFICATION:

Type I, Grade 1, Class B, Commercial Use

CERTIFIED: FloorScore®

EXCLUSIVE LONSEAL® FORMULATIONS:

Topseal, GreenAir® & GreenMedic®

LEEDv4/4.1 CONTRIBUTION B+C INTERIORS:

- Environmental Product Declarations Option 1
- Sourcing of Raw Materials Option 2
- Low-Emitting Materials
- Pre-Consumer (Post-Industrial) Recycled Content

LONCOURT® I is specifically designed for interior sport facilities where outstanding resilience, durability and low maintenance are desired. It boasts sound-absorbing construction, simple installation and ease of maintenance, and is excellent for interior gymnasium, multi-purpose fitness room environments, commercial and institutional use. Loncourt I also meets all NCAA requirements for bounce, can hold up to the impact of retractable bleachers, and accepts painted game lines and graphics.

LONCOURT® I

FEATURES *(sizes shown are nominal)*

Roll Width:	6 ft. (1.8 m)
Roll Length:	50 ft. (15.2 m)
Overall Thickness:	0.192 in. (4.8 mm)
Wear Layer Thickness	
for COURT1:	0.031 in. (0.8 mm)
for CT38:	0.020 in. (0.5 mm)
Weight:	1.6 lbs./sq. ft. (7.6 kg/m ²)

ASTM F1303 CLASSIFICATION:
Type I, Grade 1, Class B, Commercial Use

MEETS NCAA:
Basketball Rebound Requirements (49" - 54")

CERTIFIED: FloorScore®

EXCLUSIVE LONSEAL® FORMULATIONS:
GreenAir® & GreenMedic®

LEEDv4/4.1 CONTRIBUTION B+C INTERIORS:
Environmental Product Declarations Option 1
Sourcing of Raw Materials Option 2
Low-Emitting Materials
Pre-Consumer (Post-Industrial) Recycled Content



Loncourt I #CT38 Buckwheat - St. Marks School, Houston, TX



COURT1
MAPLE



CT38
BUCKWHEAT

LONCOURT® UV pairs the durability and aesthetics of the original Loncourt flooring with a factory-applied urethane finish for easier maintenance. This reduces the lifetime cost of the floor by eliminating the need to reapply coats of finish over time.



Loncourt UV #CT838UV Buckwheat - Apartment Complex in Chicago, IL



CT838UV
BUCKWHEAT

LONCOURT® UV

FEATURES *(sizes shown are nominal)*

Roll Width:	6 ft. (1.8 m)
Roll Length:	50 ft. (15.2 m)
Overall Thickness:	0.192 in. (4.8 mm)
Wear Layer Thickness:	0.020 in. (0.5 mm)
Weight:	1.6 lbs./sq. ft. (7.9 kg/m ²)

ASTM F1303 CLASSIFICATION:

Type I, Grade 1, Class B, Commercial Use

MEETS NCAA:

Basketball Rebound Requirements (49" - 54")

CERTIFIED: FloorScore®

EXCLUSIVE LONSEAL® FORMULATIONS:

GreenAir® & GreenMedic®

LEEDv4 CONTRIBUTION B+C INTERIORS:

Environmental Product Declarations Option 1
Sourcing of Raw Materials Option 2
Low-Emitting Materials
Pre-Consumer (Post-Industrial) Recycled Content



LONWOOD® PERFORMA features an anti-fatigue, cushioned-step, closed-cell foam-backing that is designed specifically for high-traffic and high-impact aerobic and fitness activities. A wood-grain sheet, it is ergonomically designed, sound absorbing and helps prevent injuries. Ideal for fitness, gym, and yoga (including hot yoga) applications.



Lonwood Performa #W553 Mocha Latte - Humble Haven Yoga, Richmond, VA

LONWOOD® PERFORMA

FEATURES (sizes shown are nominal)

- Roll Width: 6 ft. (1.8 m)
- Roll Length: 60 ft. (18.3 m)
- Overall Thickness: 0.220 in. (5.5 mm)
- Wear Layer Thickness: 0.020 in. (0.5 mm)
- Weight: 1.3 lbs./sq. ft. (6.2 kg/m²)

ASTM F1303 CLASSIFICATION:

Type I, Grade 1, Class C, Commercial Use

ASTM F2772 CLASSIFICATION:

Force Reduction Class 1

MEETS NCAA:

Basketball Rebound Requirements (49" - 54")

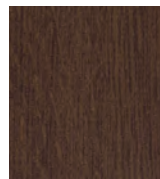
CERTIFIED: FloorScore®

EXCLUSIVE LONSEAL® FORMULATIONS:

GreenAir® & GreenMedic®

LEEDv4 CONTRIBUTION B+C INTERIORS:

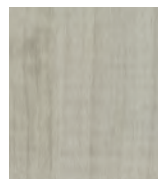
- Environmental Product Declarations Option 1
- Sourcing of Raw Materials Option 2
- Low-Emitting Materials
- Pre-Consumer (Post-Industrial) Recycled Content



W547
SABLE



W548
OAK



W549
SILVER LAKE



W550
BUCKWHEAT



W553
MOCHA LATTE



W556
SUMMER BREEZE



W557
MORNING FOG

Ideal for fitness and gymnasium facilities, LONWOOD® WITH FOAM features an anti-fatigue, cushioned-step, closed-cell foam-backing that is well suited to high-traffic interiors. Lonwood with Foam features 10% recycled content.



Lonwood with Foam #W375 Foam Buckwheat - Texas Children's Hospital, Houston, TX



W375
FOAM BUCKWHEAT



W382
FOAM GOLDEN OAK



FITNESS

LONWOOD® WITH FOAM

FEATURES *(sizes shown are nominal)*

Roll Width:	6 ft. (1.8 m)
Roll Length:	60 ft. (18.3 m)
Overall Thickness:	0.120 in. (3.0 mm)
Wear Layer Thickness:	0.020 in. (0.5 mm)
Weight:	0.7 lbs./sq. ft. (3.6 kg/m ²)

ASTM F1303 CLASSIFICATION:

Type I, Grade 1, Class C, Commercial Use

MEETS NCAA:

Basketball Rebound Requirements (49" - 54")

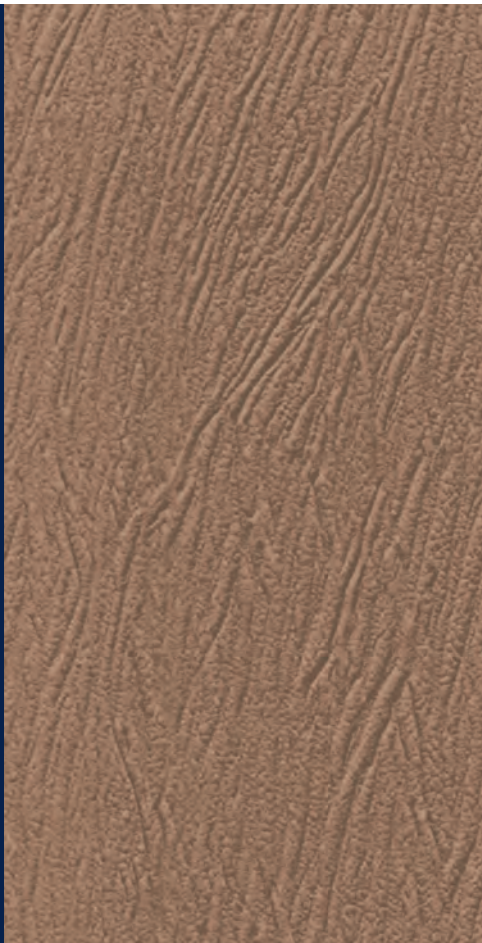
CERTIFIED: FloorScore®

EXCLUSIVE LONSEAL® FORMULATIONS:

GreenAir® & GreenMedic®

LEEDv4 CONTRIBUTION B+C INTERIORS:

Environmental Product Declarations Option 1
Sourcing of Raw Materials Option 2
Low-Emitting Materials
Pre-Consumer (Post-Industrial) Recycled Content



Lonseal's LONDECK® series features resilient exterior sheet flooring with slightly embossed surfaces that withstand high volumes of pedestrian traffic and weather-wear. Due to its versatility, Londeck has been utilized in spaces such as pools, hotel and condo decks, and stairways. Though specifically designed for exterior spaces, the Londeck line is equally appropriate for interiors.

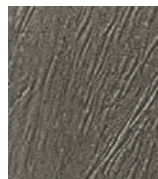


Londeck #D776 Dartmouth Gray

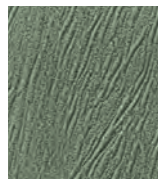
LONDECK®

FEATURES *(sizes shown are nominal)*

- Roll Width: 6 ft. (1.8 m)
- Roll Length: 60 ft. (18.3 m)
- Overall Thickness: 0.080 in. (2.0 mm)
- Wear Layer Thickness: 0.032 in. (0.8 mm)
- Weight: 0.6 lbs./sq. ft. (3.1 kg/m²)



D750
TUDOR BROWN



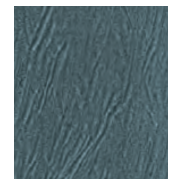
D752
FAIRMONT GREEN



D753
KENSINGTON
BROWN



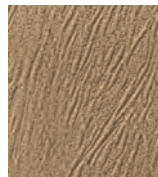
D754
PACIFIC SAND



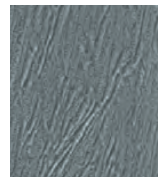
D758
PHILIPSBURG BLUE



D759
BRIARWOOD



D771
SHAKER BEIGE

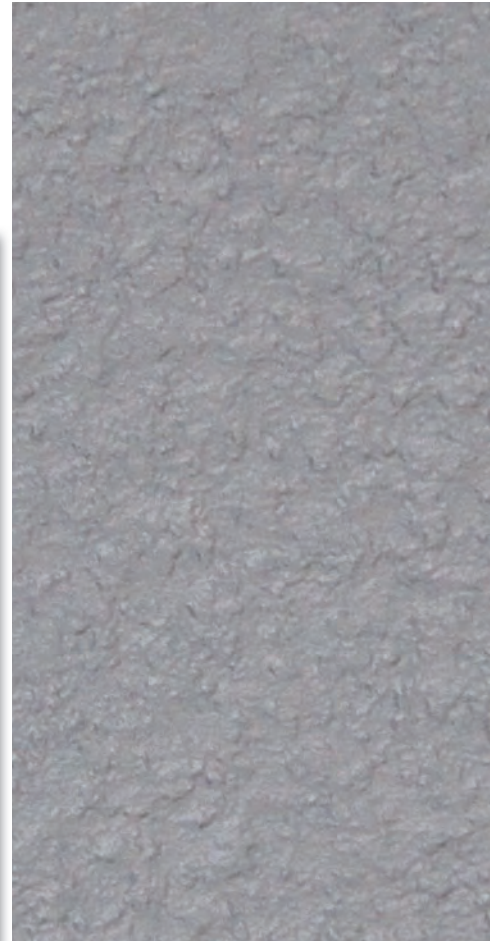


D776
DARTMOUTH GRAY

Mimicking the look of stucco with a slightly more subtle and crevassed surfacing than our regular Londeck offering, LONDECK® SIERRA is similarly water-resistant, weather-tolerant and holds up to heavy foot traffic.



Londeck Sierra #D721 Sierra Cliff Face - Crescent Condos, St. Louis, MO



EXTERIOR DECKING

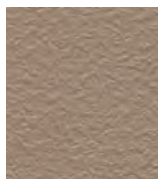
LONDECK® SIERRA

FEATURES *(sizes shown are nominal)*

Roll Width:	6 ft. (1.8 m) or 8.5 ft. (2.6 m)
Roll Length:	60 ft. (18.3 m) or 75 ft. (22.9 m)
Overall Thickness:	0.080 in. (2.0 mm)
Wear Layer Thickness:	0.032 in. (0.8 mm)
Weight:	0.6 lbs./sq. ft. (2.8 kg/m ²)



D721
SIERRA
CLIFF FACE*



D723
MOUNT TAN*



D725
SIERRA STONE



D726
FAIRMOUNT GREEN



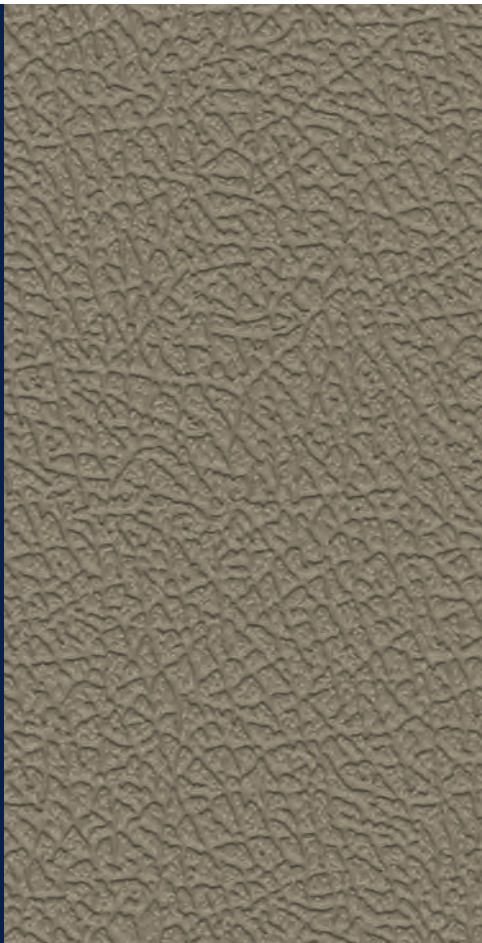
D727
PLATINUM



D729
TITANIUM

* Please note that #D721 Sierra Cliff Face and #D723 Mount Tan are available in both 6 ft. (1.83 m) wide and a width of 102 in. (8 ft. with 2-1/2 selvage per edge). All other colors are available in 6 ft. (1.83 m) wide rolls only unless custom ordered.

Note: Due to printing process limitations, printed colors may not match the actual product colors. If color match is critical, please request a sample at 800.832.7111 or 310.830.7111. For the most up-to-date color choices, go to LONSEAL.COM



As part of Lonseal's exterior flooring series, LONDECK® SOL is a resilient exterior sheet flooring with a COOLTOUCH technology that reflects the sun's rays and reduces the surface temperature up to 10°F (-12.22°C). Londeck Sol exhibits a leather grain pattern. It withstands high volumes of pedestrian traffic and weather-wear. Because of its versatility, Londeck Sol can be utilized in spaces such as pools, hotel and condo decks, boats and stairways. Roll Size: 8 ft. 6 in. (2.59 m) wide x 60 ft. (18.3 m).

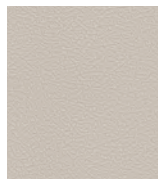
LONDECK® SOL

FEATURES *(sizes shown are nominal)*

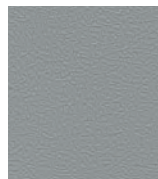
- Roll Width: 8 ft. 6 in. (2.59 m)
- Roll Length: 60 ft. (18.3 m)
- Overall Thickness: 0.080 in. (2.0 mm)
- Wear Layer Thickness: 0.032 in. (0.8 mm)
- Weight: 0.6 lbs./sq. ft. (2.9 kg/m²)



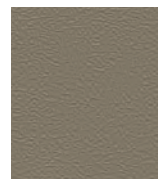
Londeck #D992 Overcast



D991
CLAY DUST



D992
OVERCAST



D993
PURE EARTH



D994
DESERT KHAKI

As an environmentally-conscious manufacturer, Lonseal provides the most functional, beautiful, sustainable, and high-performance products available.

Lonseal has been distributing resilient sheet flooring in the United States since 1972. Our flooring is among the most visually striking and distinctive in the market. Lonseal has a number of eco-friendly features such as a pre-applied urethane finish, Topseal. This finish reduces maintenance efforts. It also adds durability and product longevity that far exceeds most other flooring options.

The GreenAir® Collection is Lonseal's suite of low VOC and FloorScore® certified resilient sheet flooring products which support Indoor Air Quality (IAQ). Along with the exciting development of low VOC vinyl flooring, Lonseal is continuously exploring new methods and technologies to minimize impact on the environment.

Among Lonseal's GreenVinyl features:

- Lonseal's interior flooring products contribute towards **LEEDv4/4.1 Building Product Disclosure and Optimization**:
 - **Environmental Product Declarations (Option 1)**. This qualifies our materials and sources with industry-wide EPD.
 - **Sourcing of Raw Materials (Option 2)**, which means our products meet the post-industrial recycled content that ranges from 10-20% (some Lonseal products exceed this requirement and fall within 25%-50%, such as the Loneco Topseal).
- All of our interior flooring products and our adhesive products have the **Indoor Environmental Quality Credit**. This credit shows that we met the General Emissions Evaluation and VOC content requirements.
- Lonseal obtains its flooring product from a facility that has certifications from the ISO (International Organization for Standardization): **ISO 9001 Quality Management Systems** and **ISO 14001 Environmental Management Systems**. ISO is a rigorous external third-party verification process that ensures Lonseal's compliance to its own internal standards and to ever-changing environmental laws and regulations.
- The GreenAir® Collection features products that are low VOC-emitting.
- Our GreenMedic® formulation features increased infection control through our exclusive anti-microbial formulation.
- We have FloorScore® certification from the **Resilient Floor Covering Institute (RFCI)** and **Scientific Certification Systems** which independently test and certify flooring products for compliance with indoor air quality emission requirements.
- Lonseal is a member of and meets the standards for the **Collaborative for High Performance Schools (CHPS)**. CHPS is a green building rating program especially designed for schools.

While resilient flooring manufacturers have made great progress in recent years, Lonseal is never satisfied with the status quo. We are always striving to raise the green bar with ever-more eco-friendly products with the development of our GreenVinyl formulations.

We have also greatly increased our use of recycled pre-consumer (post-industrial) content. Lonseal products have an average of 20% recycled product while our Loneco® line features over 50% recycled content. We have also introduced a range of products with Topseal, a UV-cured, factory-applied, urethane-finish. Due to their low-maintenance and matte finish, products with Topseal reduce the use of chemicals from finishes and strippers.

There will always be more to come. Lonseal continues to explore new production technologies and formulation methods in order to create the most eco-friendly flooring options for commercial industries.



LONSEAL'S GREENVINYL STORY



BENEFITS OF LONSEAL® SHEET VINYL FLOORING

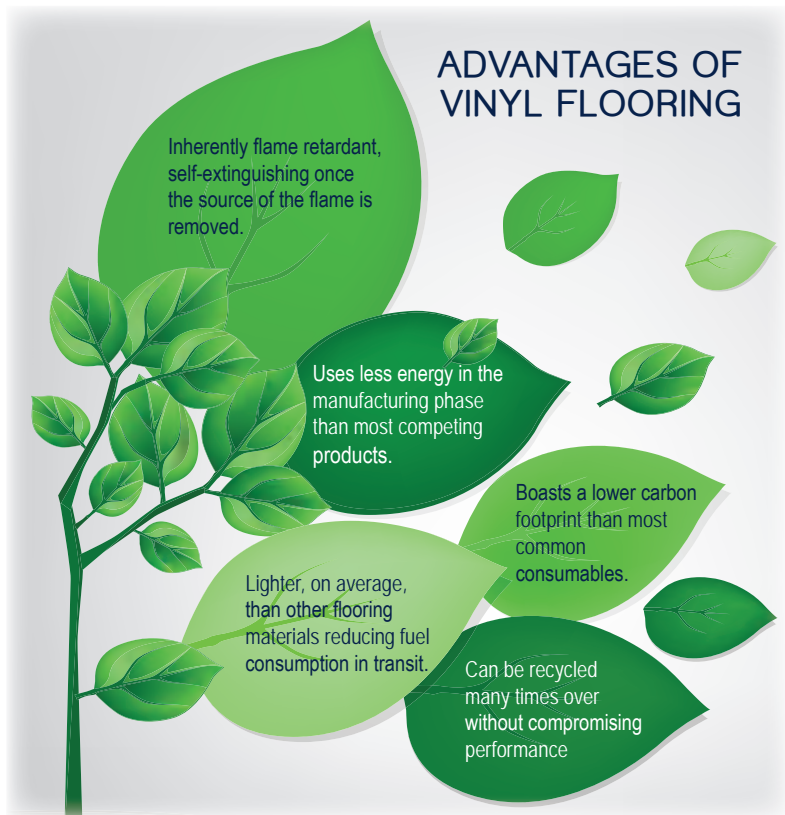
Lonseal specializes in resilient sheet vinyl flooring, with products available in a wide variety of colors, styles, and patterns. Its durability, practicality, and value have made it a popular choice in multiple types of applications for many decades.

WHY VINYL? Vinyl is an extremely versatile component. When used in flooring products, specifically in sheet goods, it creates flexible yet durable flooring. Additionally, vinyl is environmentally friendly. Its primary raw material is obtained from the nearly inexhaustible supply of sodium chloride (salt). Its manufacture has a smaller impact than other plastics, produces virtually no dioxins, and relies on fewer oil by-products than rubber. Vinyl is naturally fire retardant, highly recyclable, and products can be easily manufactured to meet strict indoor air quality (IAQ) requirements.

SUPERIOR SANITARY CONDITIONS Lonseal flooring is impermeable to moisture, which prevents it from penetrating to the substrate. This also means any contaminants contained within the moisture stay right on the surface for easier cleaning. Further, commercial installations with proper heat or chemically welded seams and flash coving at the walls helps ensure the install meets the strict sanitary requirements for healthcare or similar settings, eliminating places soiling and contamination are able to collect. For installations where flash coving is not possible, suitable sealants may be applied to prevent moisture intrusion at an installation's perimeter. Select products contain Lonseal's GreenMedic® formulation and a factory-applied urethane finish. When coupled with a suitable maintenance program for its application, your Lonseal flooring can be kept to the highest sanitary standards.

EXCEPTIONAL SURFACE PERFORMANCE While the calendaring method used to create Lonseal flooring allows for versatile designs, it also helps ensure consistency in performance. To improve slip resistance, a variety of textured or embossed surfaces are used, and select products include a factory-applied urethane finish. The layered construction also allows for great wear resistance. These features make our broad line of products suitable to many different applications.

RESILIENT AND DURABLE Lonseal flooring's softness and flexibility do not compromise its performance. It provides superb comfort underfoot, which is beneficial to those who spend a lot of time standing or walking. But it can also endure heavy loads and high traffic, recovering over time and demonstrating its resilience. The frequent healthcare and aircraft applications are great indicators of the flooring's performance in demanding environments.



GreenVinyl Products Contributing to LEEDv4/4.1 Building and Construction Interiors

Reviewed by SCS Global Services

Product	LEEDv4 Contribution towards Building Product Disclosure and Optimization: Environmental Product Declarations Option 1* (0.5 point)	LEEDv4.1 Contribution towards Building Product Disclosure and Optimization: Environmental Product Declarations Option 1* (1 point)	LEEDv4/4.1 Contribution towards Building Product Disclosure and Optimization: Sourcing of Raw Materials Option 2** (1 point)	LEEDv4/4.1 Contribution towards Low-Emitting Materials*** (3 points)	10%-20% Pre-Consumer (Post-Industrial) Recycled Content	FloorScore® CERTIFIED Indoor Air Quality Certified to SCS-EC10.2-2007	GREENAIR® (Low VOC's formulated)	GREENMEDIC® (Anti-microbial formulated)
Lonbead	✓	✓	✓	✓	✓	✓	✓	✓
Loncoin I	✓	✓	✓	✓	✓	✓	✓	✓
Loncoin II	✓	✓	✓	✓	✓	✓	✓	✓
Loncoin II Flecks	✓	✓	✓	✓	✓	✓	✓	✓
Loncourt I	✓	✓	✓	✓	✓	✓	✓	✓
Loncourt UV	✓	✓	✓	✓	✓	✓	✓	✓
Londante TOPSEAL (Phthalate Free)	✓	✓	✓	✓	✓	✓	✓	✓
Loneco® TOPSEAL	✓	✓	✓	✓	✓	✓	✓	✓
Loneco® Linen TOPSEAL	✓	✓	✓	✓	✓	✓	✓	✓
Lonfloor Galvanized TOPSEAL	✓	✓	✓	✓	✓	✓	✓	✓
Lonfloor Plain	✓	✓	✓	✓	✓	✓	✓	✓
Lonmetro UV	✓	✓	✓	✓	✓	✓	✓	✓
Lonnoire TOPSEAL (Phthalate Free)	✓	✓	✓	✓	✓	✓	✓	✓
Lonpearl	✓	✓	✓	✓	✓	✓	✓	✓
Lonplate I	✓	✓	✓	✓	✓	✓	✓	✓
Lonplate II	✓	✓	✓	✓	✓	✓	✓	✓
Lonplate Palina	✓	✓	✓	✓	✓	✓	✓	✓
Lonpoint Moonwalk	✓	✓	✓	✓	✓	✓	✓	✓
Lonspeck TOPSEAL	✓	✓	✓	✓	✓	✓	✓	✓
Lonstage MT	✓	✓	✓	✓	✓	✓	✓	✓
Lonstage UV	✓	✓	✓	✓	✓	✓	✓	✓
Lonstrand TOPSEAL (Phthalate Free)	✓	✓	✓	✓	✓	✓	✓	✓
Lonwood Dakota TOPSEAL	✓	✓	✓	✓	✓	✓	✓	✓
Lonwood Madera TOPSEAL	✓	✓	✓	✓	✓	✓	✓	✓
Lonwood Natural TOPSEAL	✓	✓	✓	✓	✓	✓	✓	✓
Lonwood Performa	✓	✓	✓	✓	✓	✓	✓	✓
Lonwood with Foam	✓	✓	✓	✓	10%	✓	✓	✓
Lonzebra TOPSEAL	✓	✓	✓	✓	10%	✓	✓	✓
Lonseal Adhesive 755 (Green Label Plus)	✓	✓	✓	✓	✓	✓	✓	✓
Lonseal Adhesive 650 (Green Label Plus)	✓	✓	✓	✓	✓	✓	✓	✓

* Building Product Disclosure and Optimization: Environmental Product Declaration Option 1
 • Materials and resources credit
 • Qualified with industry-wide EPD

** Building Product Disclosure and Optimization: Sourcing of Raw Materials Option 2
 • Materials and resources credit
 • Qualified with recycled content in products (post-industrial recycled content in Lonseal products range from 10-20%)
 • USGBC approved program

*** Low-emitting materials
 • Indoor Environmental Quality Credit
 • Qualified with FloorScore® certified flooring products and Green Label Plus® adhesives
 • Qualified with adhesive products that are low in VOC and meet General Emissions Evaluation and VOC content requirements for wet applied products

About SCS Global Services: SCS has been providing global leadership in third-party environmental and sustainability verification, certification, auditing, testing, and standards development for over 30 years. The SCS Kingfisher certification mark appears on a wide range of products used in the green building and other industry sectors, and is recognized by government agencies, the design community, retailers, and leading green building rating schemes such as LEED, BREEAM, and more. SCS is a chartered benefit corporation, reflecting its commitment to socially and environmentally responsible business practices.

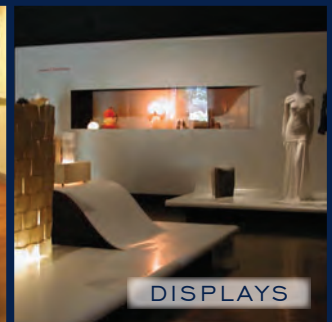




EXTERIOR DECKING



FIXTURES



DISPLAYS



ASSISTED LIVING



RETAIL

All technical information, including installation manuals, specifications, warranties and maintenance guidelines can be found at LONSEAL.com

For complimentary samples, please call 800.832.7111. Outside the U.S., call +1 310.830.7111

Lonseal, Inc.
928 East 238th Street
Carson, CA 90745 USA

LONSEAL.COM