

setaGrip

NEW PATENT-PENDING
TECHNOLOGY by NUFLOR

PRODUCT E-BROCHURE
SETAGRIP™ TECHNOLOGY BY NUFLORS™



RUSTIC CHARM COLLECTION
COLOR: MOONLIT PEARL
SKU# SG-4421-05

SETAGRIP™ TECHNOLOGY BY NUFLORS™

SetaGrip™ is an entirely new concept for the installation of floors without adhesives. The SetaGrip™ Technology system uses vacuum, negative fluid pressure and millions of microscopic suction cups to securely adhere any object to a flat, non-porous surface. When the flooring is pressed against a flat surface, millions of miniature suction cups create a large vacuum, generating a strong bond that can hold a tremendous amount of weight. The nature of the technology allows easy removal without residue and makes it reusable time and time again.

This technique is very different to the common 'Looselay' systems that relies on non-adhesive tread patterns to stay in place, which in a lot of installations, does not work and requires the use of vinyl glue to prevent movement.

Our SetaGrip™ Technology is the ideal solution for both DIY or professional installations where quick and simple installation are needed.

Choosing SetaGrip™ Technology is a healthy choice. By eliminating the need for glue, there is no release of solvents or humidity associated with liquid glues.



LAYERING TECHNOLOGY

Crosslinked Urethane Coating with Ceramic Bead Reinforcement

Our special formulation of crosslinked urethane coating is reinforced with ceramic beads for extra durability including scratch and abrasion resistance. Combined with vacuum hot pressed embossing, this creates a natural wood grain texture on every plank.

Super Clear Wear Layer - 22 Mil Commercial Grade

Our durable wear layer is designed to stand up to the rigors of life. It is comprised of 100% pure polymer with no fillers or additives for the absolute best clarity in the look and design of the flooring. The unique embossing plates are also pressed through this layer for vivid and realistic textures.

High Definition Imaging Layer

Carefully selected designs are photographed and printed onto a high quality print layer in a 6 color process, making the wood and tile grains and design pop and shine through.

Vinyl Core Backing Layer

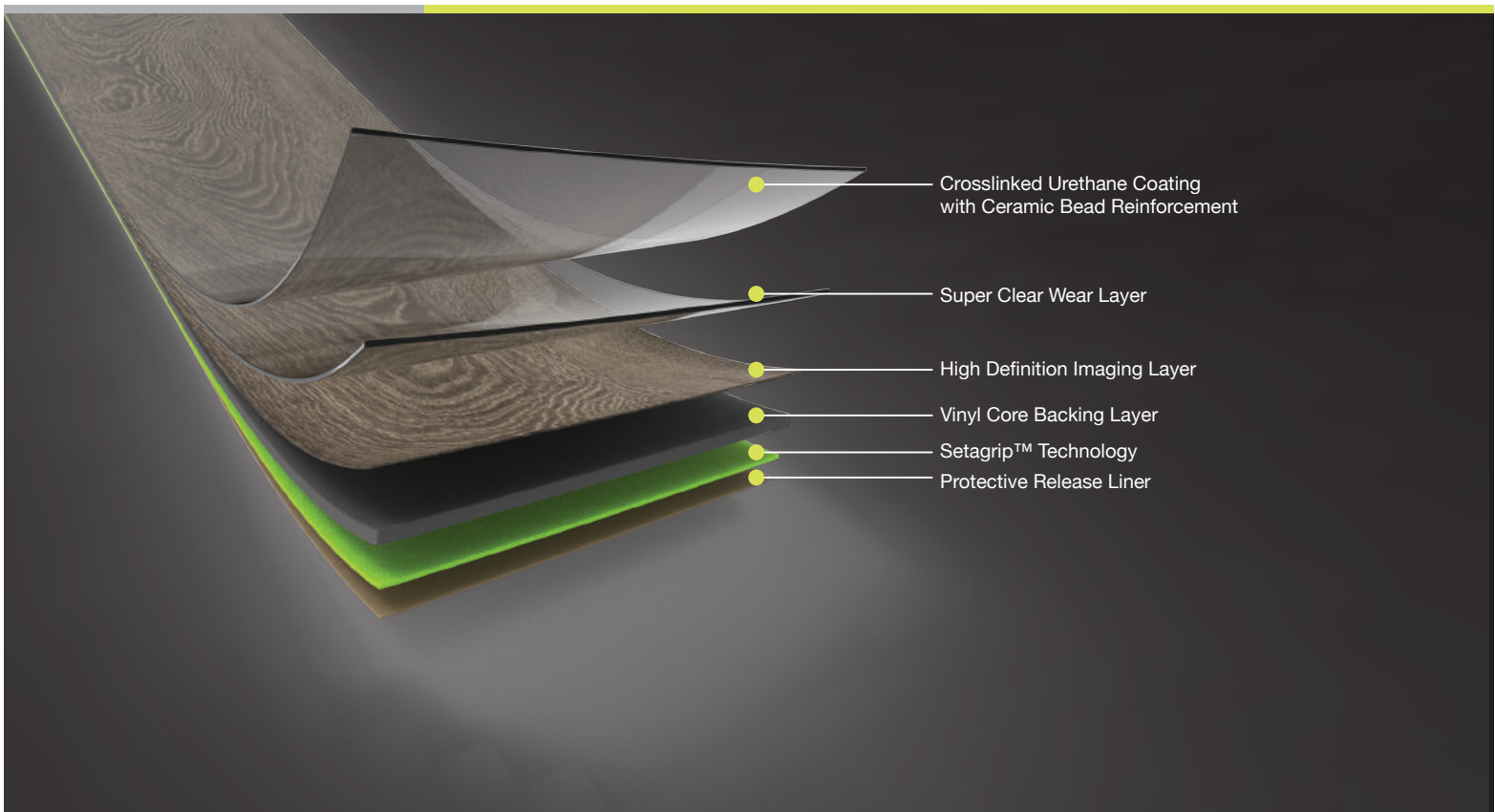
Our patented vinyl core is specially formulated with white ceramic to provide extra dimensional stability with resistance to shrinking and expanding due to environmental and other forces.

SetaGrip™ Patent Pending Vacuum Suction Layer

SetaGrip uses vacuum, negative fluid pressure, and millions of microscopic suction cups to securely adhere any object to a flat, non-porous surface. When the flooring is pressed against a flat surface, millions of miniature suction cups create a large vacuum, generating a strong bond that can hold a tremendous amount of weight. The nature of the technology allows easy removal without residue, and makes it reusable time and time again.

Protective Release Liner

This temporary covering protects the SetaGrip layer from dust, dirt, and premature adherence until the flooring is ready to be installed. Removal of the liner is the final step prior to installation.



RENU COLLECTION



COLOR: PERFECT TAUPE
SKU# SG-4007-13



COLOR: TAWNY LEAVES
SKU# SG-4007-18



COLOR: CHALET RETREAT
SKU# SG-4007-10



COLOR: CHAMOMILE
SKU# SG-4621-02

COSMOPOLITAN COLLECTION



COLOR: ESPRESSO
SKU# SG-4621-10



COLOR: CASHMERE
SKU# SG-4621-04



COLOR: SAND DOLLAR
SKU# SG-4421-03



COLOR: MOONLIT PEARL
SKU# SG-4421-05

BOARDWALK COLLECTION



COLOR: CHATEAU OAK
SKU# SG-4131-01



COLOR: LOW TIDE
SKU# SG-4131-09

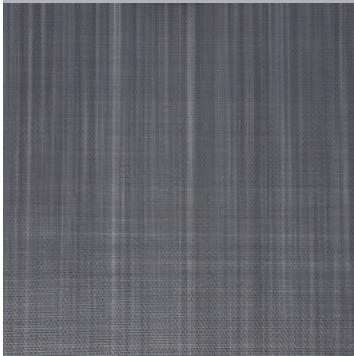


COLOR: SAND DUNE
SKU# SG-4131-04

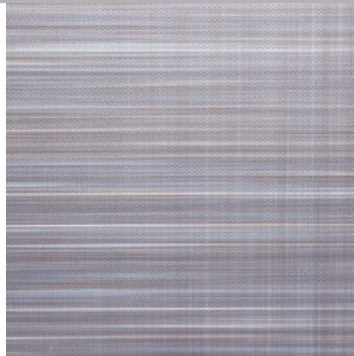


COLOR: TWILIGHT
SKU# SG-4131-08

BLACK TIE COLLECTION



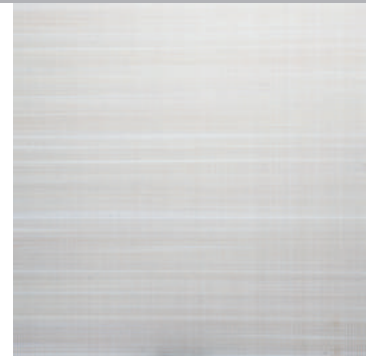
COLOR: BLACK CAVIAR
SKU# SG-4581-D05



COLOR: ROYAL PLAID
SKU# SG-4581-D01



COLOR: IVY LEAGUE
SKU# SG-4581-D11



COLOR: OPAL WHITE
SKU# SG-4581-D03

RENU COLLECTION



COLOR: CLEAR MIND
SKU# SG-4370-05



COLOR: GREEK PILLARS
SKU# SG-4370-07



COLOR: DUKE GREY
SKU# SG-4591-06

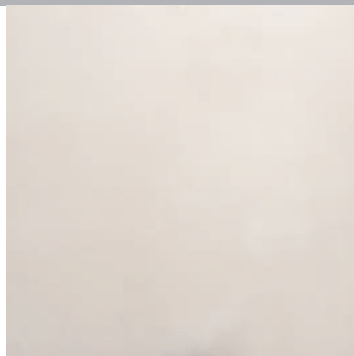


COLOR: DUCHESS LACE
SKU# SG-4591-05

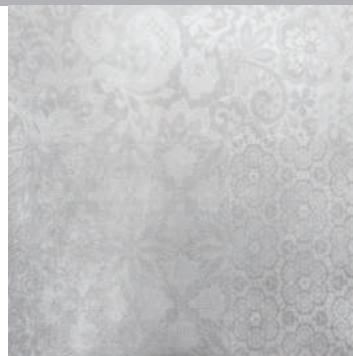
CASTLE COLLECTION



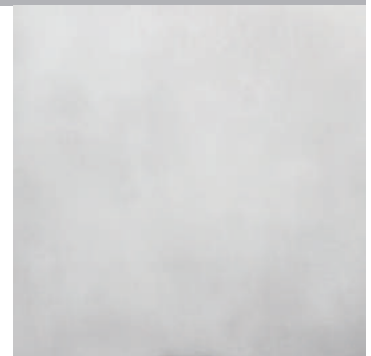
COLOR: BLACK RAVEN
SKU# SG-4591-02



COLOR: WHITE PEARL
SKU# SG-4591-14



COLOR: QUEENS LACE
SKU# SG-4591-11



COLOR: KNIGHTS ARMOR
SKU# SG-4591-12



SOUND INSULATED

Setagrip™ provides noise dampening and sound reduction with no clicking or other acoustic noise generated.



WATERPROOF

Setagrip™ does not promote growth of mold, mildew, and won't trap pet dander, dust, or other allergens. It can be completely submerged in water with no effect to its structure or construction.



EASY MAINTENANCE

A wet Swiffer, flat mop, or vacuum is all you need to clean your Setagrip™ floor.

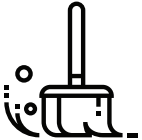
QUICK INSTALLATION & FAQs

THE WORLD'S FIRST TRUE HYBRID GLUELESS SYSTEM

The innovative technology behind this new all-in-one solution maintains adhesion as well as traditional glue down methods. The SetaGrip technology resists popping, lifting, and de-lamination in direct sunlight and when subjected to high foot traffic and rolling loads. Quick install products, such as loose lay and click, simply can't match the value of this new system.

SetaGrip Technology by NuFlors enables products to be installed without the use of adhesives, click mechanics, or double side tape. The product is fabricated with a patent-pending backing system during the manufacturing process and shipped with a coated release paper to keep individual flooring products from adhering to each other.

SAVE TIME AND MONEY WITH OUR EASY INSTALLATION SYSTEM



STEP 1 - CLEAN & PREP

You must make sure that the subfloor SetaGrip is going over must be free from dirt, dust and thoroughly cleaned.



STEP 2 - PLACE & PRESS FLOORS

Stage products for design layout and begin removing the protective liner and place on the subfloor. Start applying pressure to activate the SetaGrip technology.



STEP 3 - MEASURE

Measure the flooring that needs to be cut to fit areas near the walls. Score from the top of the product using a straight end and a utility knife.



STEP 4 - CUT

Cut off excess piece and use cut piece to begin a new row. Continue normal installation process.

FAQs

What if my floor is porous?

If your floor is bare concrete, plywood, unglazed tile, limestone, brick etc. you must first use a flooring primer to get the surface sealed. We recommend applying a single coat (apply additional coats if needed), waiting until they dry, and testing a small corner of SetaGrip product to see if the surface will give the vacuum suction that allows SetaGrip to adhere to non-porous surfaces.

How can I tell if my floor is flat enough?

Standards for floor flatness are typically within 1/32 of an inch within every 1 foot or 1/8 of an inch over 6 feet. In order to determine this, take a straight edge on its side (a 1 foot straight edge works best), and measure any gap underneath the straight to see what kind of gap you have. If your floor is not flat enough, you can use an underlayment, like a cement based floor lever for concrete or wood underlayment for wood.

Is my floor smooth enough?

SetaGrip will adhere to any existing floors with surface embossing with no issue on most vinyl or wood floors. The smoother the surface, the stronger the SetaGrip bond. If going over ceramic tile with grout joints, you can smooth out the joints with a grout filler, embossing leveler, or floor patch using a trowel.

Can I use Setagrip in my basement?

SetaGrip requires a dry surface for adhesion. Therefore any on or below grade floor that has direct contact with the earth could be susceptible to moisture from below. To check if your floors are dry, cut a 2 by 2 foot square of a garbage bag and duct tape around the edges to the floor. Wait at least 48 hours and detach the bag. If there is no visible moisture, darkness or change in color, you can install SetaGrip following the standard installation procedure. If there is, your floor will need a coating system overtop the floor to protect the SetaGrip from moisture.

Do I need wax on my SetaGrip flooring?

No, that's another great feature offered by SetaGrip. They resist staining and are easy to clean and require no waxing. We do not recommend using wax over our SetaGrip products.

Can I install over my existing floor?

Yes, you can install over any non porous floor that is first thoroughly cleaned and free of dust and dirt.

PRODUCT SPECIFICATION SHEET

SETAGRIP™ TECHNOLOGY BY NUFLORS™

PRODUCT INFORMATION

CONSTRUCTION	PRODUCT	INTERNATIONAL PRODUCT SPECIFICATIONS	OVERALL THICKNESS	FACTORY FINISH	INSTALLATION
LVT - LUXURY VINYL TILE	SETAGRIP™ BY NUFLORS	ASTM F1700, CLASS III, TYPE B EMBOSSED SURFACE	4MM, 5MM, 6MM GAUGE 22MIL WEARLAYER	UV-CURED PU W/ CERAMIC BEAD	SETAGRIP™ NO ADHESIVES

PACKAGING INFORMATION

THICKNESS	TILE SIZES	TILES PER CTN / SF	SHIPPING WEIGHT PER CTN
4.0MM/22MIL	18" X 18" (457MM X457MM)	16 TILES - 36 SF (3.34SM)	45 POUNDS (20.5 KG)
	7.25" X 48" (184MM X1219MM)	15 TILES - 36 SF (3.36SM)	46 POUNDS (20.8 KG)
	9" X 48" (228MM X1219MM)	12 TILES - 36 SF (3.34SM)	47 POUNDS (21.5 KG)
5.0MM/22MIL	18" X 18" (457MM X457MM)	12 TILES - 27 SF (2.50SM)	45 POUNDS (20.5 KG)
	7.25" X 48" (184MM X1219MM)	12 TILES - 29 SF (2.68SM)	46 POUNDS (20.8 KG)
	9" X 48" (228MM X1219MM)	10 TILES - 30 SF (2.78SM)	47 POUNDS (21.5 KG)
6.0MM/22MIL	18" X 18" (457MM X457MM)	10 TILES - 22 SF (2.08SM)	45 POUNDS (19.5 KG)
	7.25" X 48" (184MM X1219MM)	10 TILES - 23 SF (2.13SM)	46 POUNDS (20.8 KG)
	9" X 48" (228MM X1219MM)	08 TILES - 24 SF (2.23SM)	46 POUNDS (20.8 KG)

PERFORMANCE SPECIFICATIONS

PRODUCT QUALIFICATIONS	ASTM F 1700	PASS
STATIC COEFFICIENT OF FRICTION	ASTM D2047	WET 0.83 / DRY 0.96
FLAME TEST - FLAME SPREAD	ASTM E648	0.45 W/CM ² OR MORE CLASS 1
FLAME TEST - SMOKE DENSITY	ASTM E662	450 OR LESS
FLEXIBILITY	ASTM F137	PASS 6MM MANDREL
THICKNESS	ASTM F386	0.157 INCH
STATIC LOAD LIMIT	ASTM F970	0.005 INCH - 250PSI
HEAT STABILITY	ASTM F1514	4.0 (SLIGHT CHANGE)
LIGHT STABILITY	ASTM F1515	4.5 (NO/SLIGHT CHANGE)
DIMENSIONAL STABILITY	ASTM F2199	LENGTH -0.003 INCH PER 12 INCHES (-0.03%)
		WIDTH -0.002 INCH PER 12 INCHES (-0.02%)
SIZE & SQUARENESS	ASTM F2421	PASS
RESISTANCE TO CHEMICAL	ASTM F925	PASS
IMPACT SOUND INSULATION	ISO 140-8:1997	DELTA IIC 20DB