

**CALHOUN USA
STOCK OVERVIEW**

V.01 - 02/15/23



**REFINED HIGH-TECH
WOVEN FLOORING**

HERRINGBONE

Oyster 4

HYBRID

Darkside 8

Helios 9

Meteor 10

Rosetta 11

INFINITE

Eclipse 14

Juno 15

Moonless Night 16

Moonrock 17

Neptune 18

Planet 19

DESERT

Farafra 22

MARBLE

Carrara 26

Portoro 27

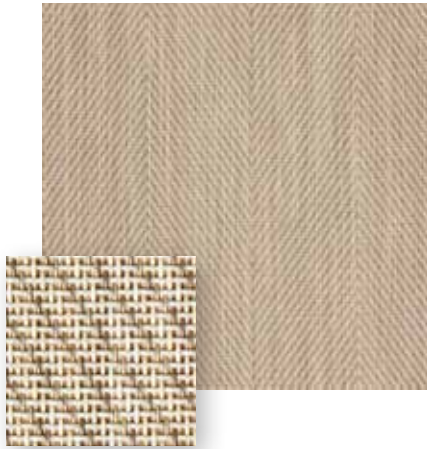


HERRINGBONE

COLLECTION

The Herringbone collection is influenced by the sharp, V-shaped patterns found in the delicate fossils of the marine animals after which this pattern is named. The Herringbone pattern will act as the unyielding, skeletal framework for your room, upon which you can build the rest of your interior design.

OYSTER



Oyster offers a soft, subtle tone to your space. Like the precious pearls an oyster produces, the hues in this selection are both attractive and delicate. Like its namesake, Oyster is gentle and resilient, protected by its design to withstand the elements and last through whatever pressures it may face.





HYBRID

COLLECTION

Our Hybrid references are deeply rooted in nature. These biophilic floors are a representation of the ongoing struggle between two of the most ancient elements of our world: light and dark. Our pattern tightly weaves together these contrasting hues to create a natural harmony, resulting in a beautiful visual effect.



DARKSIDE



Mysterious and enticing, Darkside makes use of sombre colours to evoke curiosity and depth. The mix of deep hues and spectral tones are spellbinding and provide a perfect counterbalance to lighter pieces in your space.

HELIOS

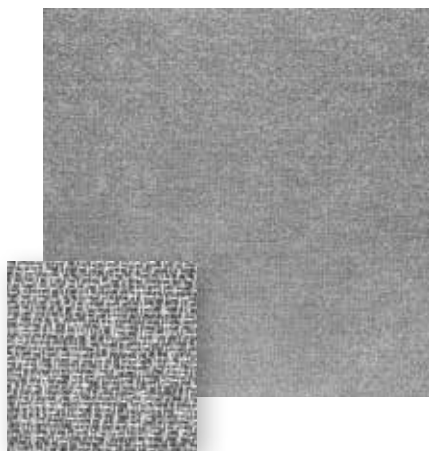


Helios bears the name of the ancient Greek god well. Like its inspiration, this selection is the personification of the sun, and the creativity and life it breeds.

The textured pattern and bright coloration will turn your space into a cradle of ideas and innovation.

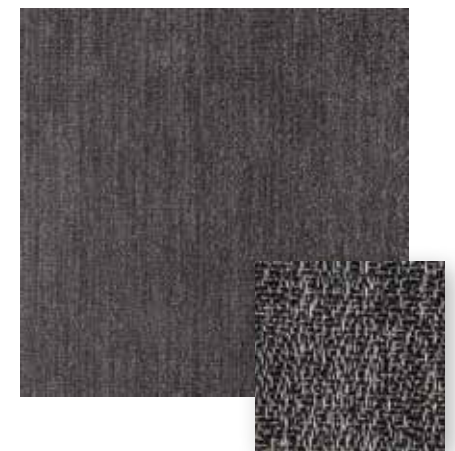


METEOR



Like a rock hurtling through space, Meteor is a spot of brilliant, space grey coloring, standing out as the rest of the world passes by. Occupants will leave a brilliant path in their wake as they walk across Meteor's simple, yet beautiful design.

ROSETTA



Rosetta is accommodating to a variety of spaces, regardless of size, location, or use. Rosetta borrows its colour scheme from the historic basalt stone that was used as a bridge to connect cultures.

Like its namesake, Rosetta's design is unifying, and truly a marvel to behold.



INFINITE

COLLECTION

Our Infinite collection is inspired by the mysteries beyond our planet. Looking upwards, we sought to bring the beauty and awe of the night sky, and the celestial bodies that inhabit it, down beneath your feet. Named after the cosmic figures of our universe, each of the pieces in this collection expresses limitless power.



ECLIPSE



Eclipse is the deepest, most resolute of our dark pieces. As its name describes, it is the absence of light, a rich void on which you can build your vision. Eclipse will contrast the bright whites and vibrant colors of your design, making them stand out all the more.

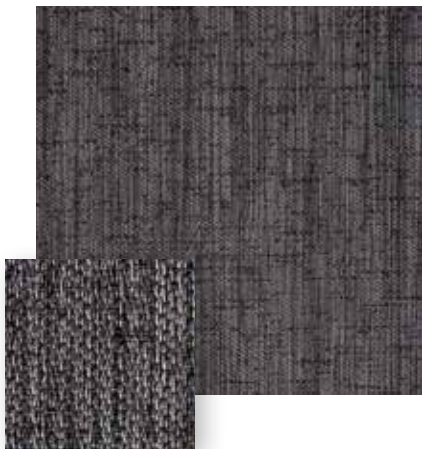
JUNO

Juno is inspired by the breathtaking moon that orbits the goliath of our solar system. Using the beige and orange notes that streak through this floating marble, Juno will bring a celestial quality to your space. Paired well with both light and dark accents, guests will gravitate towards your space with this selection.





MOONLESS NIGHT



Moonless Night gives your space a dreamy mystique. Using a dark base with highlights flecked through, the design emulates a heavy darkness, with a touch of luminescence, like stars in an otherwise pitch-black sky.

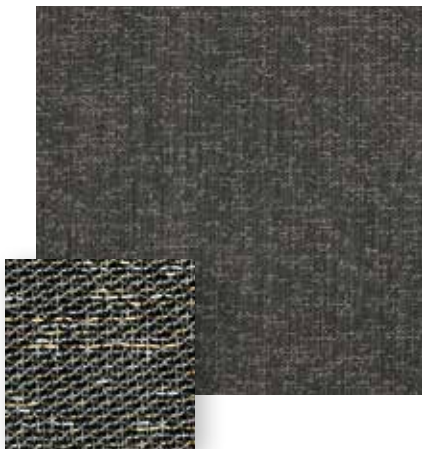
MOONROCK



Moonrock embodies the soft, supple light that shines on rock formations at night. Its luminous, calming colours reflect the light of your space, amplifying it to make occupants feel safe, and invited.

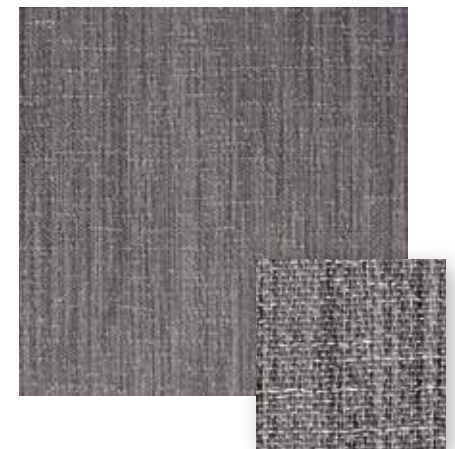


NEPTUNE

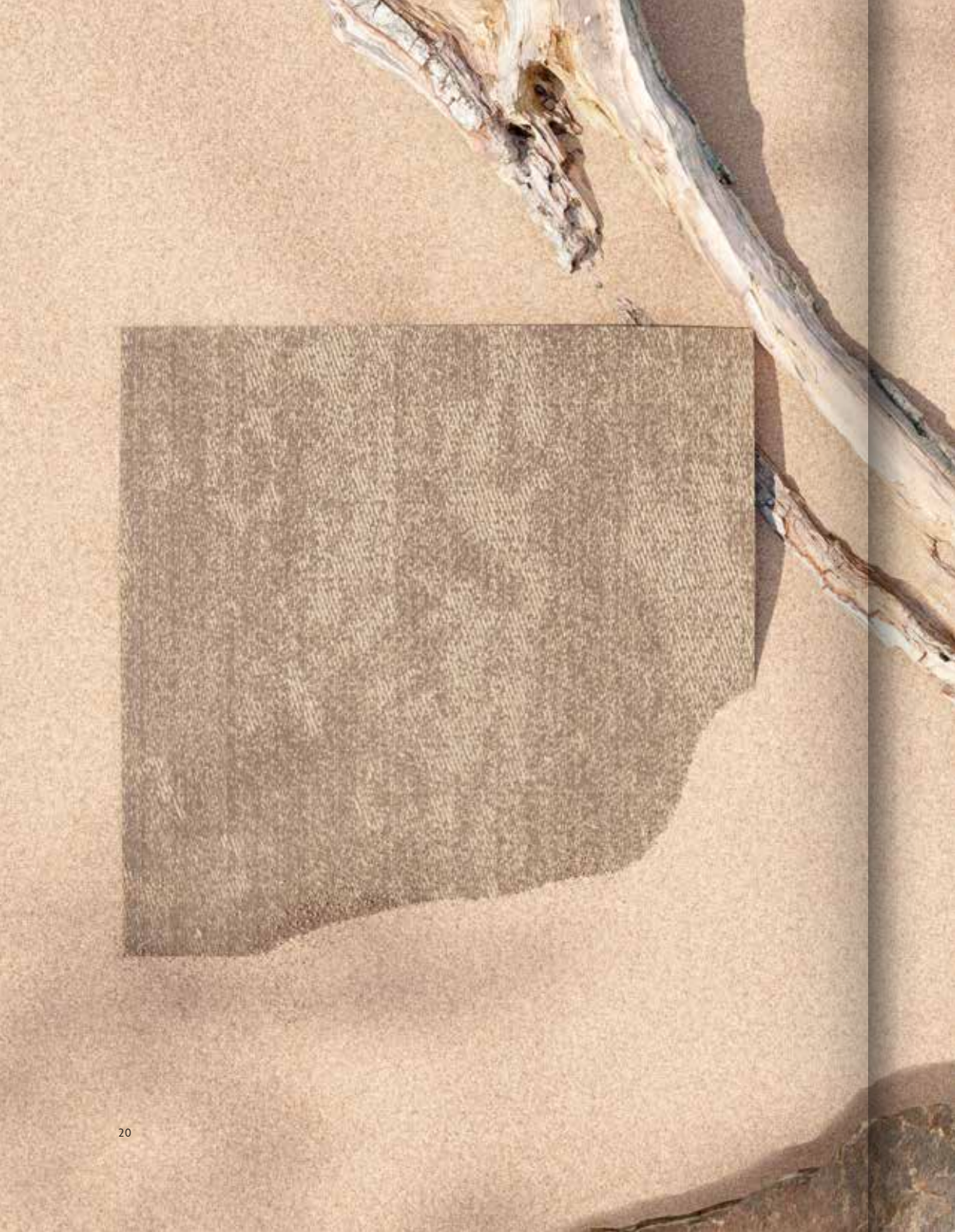


Neptune flows through your room, shimmering across your floor. Named for the ancient god of the sea, this selection mixes gold, light grey and black to match both its namesakes in durability and regality. With the Neptune selection, your space will feel transcendent.

PLANET



Like the heavenly bodies that make up our solar system, Planet is complex and diverse. Its mixture of light and dark streaks will give your space an interstellar ambience that will make your space feel hospitable.



DESERT

COLLECTION

The Desert collection pays homage to the awe-inspiring stretches of arid wasteland that blanket our planet. Though, the pattern may appear simple, just like the terrain it's named for, each piece is made of a unique and vibrant ecosystem, which creates an impressive, everlasting impression. The visual elements of each piece, emulating shifting desert sands, will bring occupants back to the unadorned ways of life our nomadic ancestors once lived.

FARAFRA



Named after Egypt's peculiar, desert landscape, Farafra is a magnificent pattern of colors designed to capture the eye. The swirling, light hues that dance atop the base notes below is reminiscent of the white capped dunes of this natural wonder.





MARBLE

COLLECTION

Eminent, regal, and everlasting. These words come to mind when viewing our Marble collection. This collection is inspired by the crystalline material that has been used to build impressive palace halls and acted as the canvas for breathtaking monuments throughout the ages. Each design features the wild, yet purposeful streaks of color that are unique to its namesake, echoing the controlled chaos that can only come from nature's own design.



CARRARA



Named after the stone unique to the quarries of Tuscany, Carrara features stark veins of white against a muted, base tone. Used by the great Roman empire to construct monuments to the gods, this pattern is inspired by the immense power and reverence of those houses to the cosmic entities of a forgotten past.

PORTORO



The most outspoken of this collection, Portoro is defined by the harsh contrast of light and dark. Like the stone it is named for, the bold coloring of this piece is an elegant statement that your occupants will describe as both haunting and breathtaking.

HERRINGBONE



Oyster

P. 4

HYBRID



Darkside

P. 8



Helios

P. 9



Meteor

P. 10



Rosetta

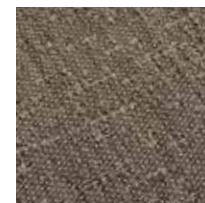
P. 11

INFINITE



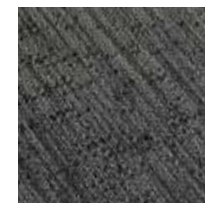
Eclipse

P. 14



Juno

P. 15



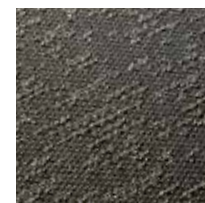
Moonless Night

P. 16



Moonrock

P. 17



Neptune

P. 18



Planet

P. 19

MARBLE



Carrara

P. 26



Portoro

P. 27

DESERT



Farafra

P. 22

Refined high-tech woven flooring

2tec2 woven flooring is available in tiles and rolls, and comes with an Acoustic Comfort Backing reducing walking noise up to 70%. Each collection is crafted with durable and eco-conscious materials ensuring a long life span and heavy commercial use.



Hygienic and easy to clean

- Stain resistant & waterproof
- Maintenance with clear water, no chemicals



Sustainable footprint

- Felt backing made of recycled PET
- Bio-based top layer (available end 2023)
- Designed for circularity: fully recyclable
- Suitable for projects according to BREEAM, LEED & WELL Building Standard*



Acoustic sound absorption

- 70% walking noise reduction
- 19 dB sound reduction
- (22 dB available end 2023)



Strong and long-lasting

- Extremely robust
- Resists office chairs & heavy traffic
- Long life span & UV-resistant



Total thickness

ISO 1765 4,6 mm - 0.18"



Total weight

ISO 8543 3200 g/m² - 94.38 oz/yd²



Level of Use

EN 1307 Class 33
ASTM D5252 Heavy commercial use



Dimensional stability

EN 986 - ISO 2551 Meets the requirements



Slip resistance

EN 13893 ≥ ds
ASTM C1028-07 0,85
DIN 51130 R9
EN 13036-4 65



Reaction to fire

EN 13501-1 B_{fl}-s1
ASTM E84 A rating



Light fastness

ISO 105-B02 8



Impact sound reduction

ISO 10140 19 dB
22 dB (available end 2023)



Acoustical absorption

ISO 354 α_w = 0,15



Walking noise reduction

EPLF 021029-3 70%



Castor chair suitability

EN 985 Continuous use



GFRContract

gfrcontract.com
Texas | Oklahoma | Arkansas | Louisiana
v: 281.757.4196
e: info@gfrcontract.com

International Headquarters and Showroom (only by appointment)

Chaussée d'Aelbeke 284
B-7700 Mouscron, Belgium
+32 (0)56 85 47 47

Contact

salesusa@2tec2.com

2tec2.com



2tec2[®]
high tech flooring