



O.A.M
TRADING



FiixO - P1 is being a premixed ready to use Silica (SiO_2 98% +), Cement Base High Quality Adhesive Compound used for external as well as internal plastering by Manual or Machine base applications, which ensures quality consistency. **FiixO - P1** is a single component water resistance monolithic plastering/rendering mixture with a ratio of Pure Silica, Cement and Adhesive Compound for applications in civil construction works.

Reference Standard

IS 1661:1972, IS 2250:1965, IS 2402:1963

Area of Application

Plaster should be capable enough to protect the wall from external UV rays, dampness, shocks, rain, humidity, fire and sound. It also gives thermal insulation to the entire building. Good plastering material is the protective covering of entire building and provides long term durability to the building. It Can be applied on Brick, Concrete block, AAC Block, Fly ash block and Concrete surface.

Benefits

- Improve durability and Structural integrity
- Resistant to weather, wear and corrosion
- It is much Purer and Premixed material makes Plastering easier and quicker.
- It gives ultimate strength and strong bonding with minimum cracks
- Better Coverage
- Well graded Silica sand ensures consistent quality and cost
- No Fly Ash

Directions for use



The surface should be free from oil, grease, paint, loose plaster or dirt particles.



Dampen the wall before application of plaster



Water / Powder ratio : 17% to 19% Mixing for 3 minutes till it's free of lumps.



Leave the mix to react of 5-10 minutes before use.



The mixture should be thrown while the cement slurry is wet, ensure leveling with the help of tools.



After final coat, ensure proper leveling with the help of appropriate tools.



Use between 5 C to 50 C.



Prevent direct contact with skin and eyes. In case of contact, wash with clean water immediately.

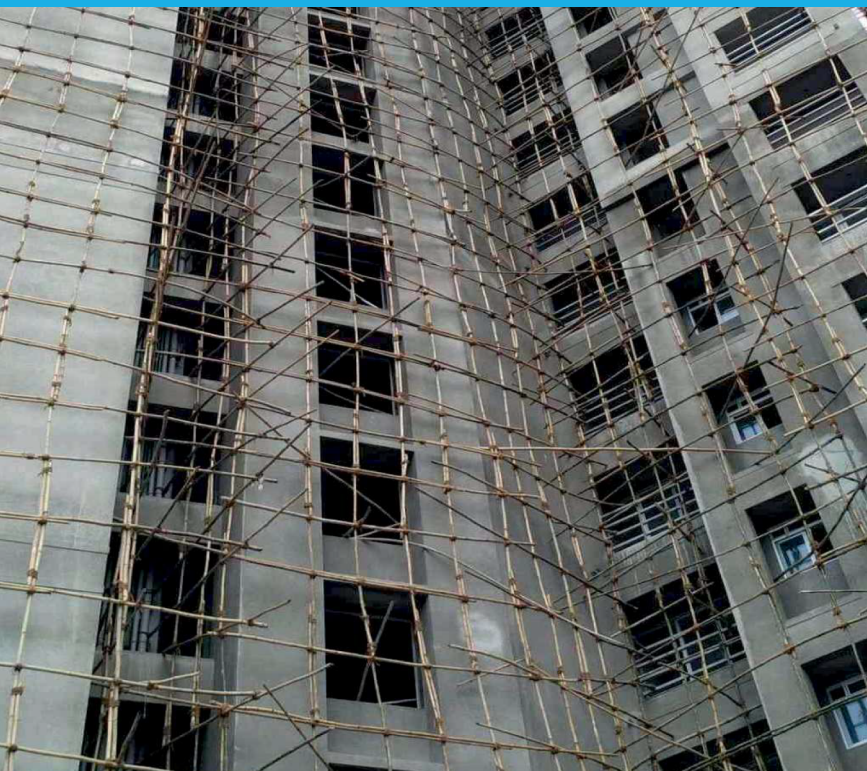
Shelf Life

It has a shelf life of 12 months from the date of manufacture. Store at cool and dry place.

Packing Size

40 Kg Bag Size / Cargo Bag 1000kg





Technical Information

Bulk density	1300-1450 Kg/m ³
Water powder ratio	17-19% by weight
Fresh Wet Density	1700-1800 Kg/m ³
Pot life	1.5 Hr @ 30 C
Compressive strength @ 7 Days Coverage	8 - 9 MPa
Compressive strength @ 28 Days Coverage	11-12 MPa
Thickness of layer	8 mm to 12 mm Layer
Water curing	2-3 times/Day for 7 days
Wastage	Almost Nil
Final finish	Smooth Finish
Initial Setting Time	1.5 to 2.0 Hr.
Final Setting Time	27 Days
Fly ash	Nil



Coverage Table for standard surface

Size of Bag	Thickness of Plaster	Area Coverage
40 kg	8mm	30 to 32 Sq. Feet
40 kg	10mm	20 to 21 Sq. Feet
40 kg	15mm	15 to 16 Sq. Feet
40 kg	18mm	12 to 13 Sq. Feet

Limitations

- Do not apply this directly to gypsum plaster or boards, fibre cement boards or other drywall partitions, plywood, chipboard, particleboard, decorative laminates or resilient flooring, metal, plastic, deformable surfaces or subject to vibrations.
- Do not use for fixing artificial/ Nano/ engineered stone/ composites/ metal tile.



 +971 52 172 9148

 info@oamuae.com

 www.oamuae.com