

October
2023

The Orchid Grower

Orchid Growers' Guild of Madison

www.Orchidgrowersguild.org



**Orchid
Growers'
Guild**

www.OrchidGuild.org

Meeting Dates

- October 15
- November 19
- December 17

Meetings start at 1:30 pm in the Meeting Room at Olbrich Gardens unless otherwise noted

Up-Coming Events

- October 28 - 29, Eastern Iowa Orchid Society's 10th Anniversary Show and Sale "Orchids are a Scream", Elks Lodge Hall, 801 33rd Ave SW, Cedar Rapids, IA
- 2024, March 1-4, 23rd World Orchid Congress, Tainan, Taiwan

Officers and Committees

President:

Susan Reed (2024)
Greed@chorus.net

Vice President:

Cynthia Wadsworth (2025)
cynthia727672@gmail.com

Secretary:

Lynn West (2025)
LynneWest15@yahoo.com

Treasurer:

Denise Baylis (2024)
jrbaylis@tds.net

Board:

Lisa Linde (2026)
CrazyCatPlantLady@gmail.com

Nancy Thomas (2024)
mikeandnancy@tds.net

Carrie Weisman (2025)
cleocatz@msn.com

Away Shows:

Nancy Thomas
mikeandnancy@tds.net

NEXT MEETING, OCTOBER 15th Dr. Raymond A. Cloyd "How to Manage Insect and Mite Pests of Orchids"

Raymond will discuss the major insect and mite pests of orchids and then address the best strategies to manage them.

Dr. Raymond A. Cloyd: Professor and Extension Specialist in Horticultural Entomology/Plant Protection, Department of Entomology, Kansas State University (Manhattan, KS).



Dr. Raymond A. Cloyd

(Continued on page 2)

MESSAGE FROM THE PRESIDENT

Hi OGG members!

Thank you to Chuck and to all of the members who attended the September meeting. This was one of our best attended September meetings! Chuck answered questions and started Orchid Nomenclature 101. Thanks to Brent we had a good microphone and camera set up for the zoom part of the meeting. I am sorry that more did not make use of this effort. If members feel this is a waste of our time for our in person presentations, we can cancel this. We will have zoom presentations always for the invited out-of-town speakers. The Zoom expenses are for a year and it doesn't depend upon how many times we use it. We also use Zoom for our monthly Board meetings as well as committee meetings to save members valuable time.

The October meeting will be a zoom meeting for we have an invited out of town speaker. We also will have the Chuck's plant challenge plants.

Notice to members: Melissa Williams has some great *Paph rothschildianum* seedlings to sell to members. Please contact Melissa (Melroseorchid1@yahoo.com if in-

INSIDE THIS ISSUE

Chuck Acker's Presentation Re-Cap	7
Chuck's Orchid Challenge	5
De-Coding Orchid Names 101	7
Eastern Iowa Show	6
Galeandra	9
Invitation To Open House	6
Message From The President	1
Next Meeting	1
October Programming Notes	2
Orchid Quest 2024 Up-Date	2
<i>Paphiopedilum Rothschildianum</i> Notes	5
Silent Auction Donation Request	9
WOS Ribbon Judging	3

(Continued on page 5)

(Continued on page 2)

(Continued from page 1)

Hospitality:
Volunteer

Library Liaison:
Sandra Gray
sandragray445@comcast.net

Membership:
Carrie Weisman
carrie.wiesman@dwd.wi.gov

Newsletter:
Denise Baylis
jrbaylis@tds.net

Orchid Quest 2024:
Terri Jozwiak
lodijoz@charter.net

Programs:
Cynthia Wadsworth
cynthia727672@gmail.com

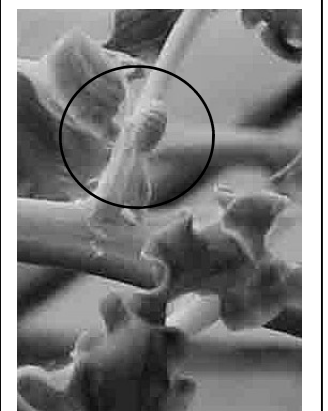
Ribbon Judging:
Open

Web Master:
Richard Jozwiak
OGGweb@charter.net

Liaisons:
AOS: Nancy Thomas
MAOC: Lynn West

(Continued from page 1)

His research and extension program involves plant protection/pest management in greenhouses, nurseries, landscapes, turfgrass, conservatories, interiorscapes, Christmas trees, vegetables, fruits, cannabis, hemp, and pollinators. Raymond is the extension specialist in horticultural entomology for the state of Kansas with a major clientele that includes homeowners, master gardeners, and professional and commercial operators. Raymond has published numerous articles on topics related to pest management/plant protection. In addition, he has authored or co-authored numerous books (Greenhouse Pest Management, Pests and Diseases of Herbaceous Perennials, IPM for Gardeners, Plant Protection: Managing Greenhouse Insect and Mite Pests, Compendium of Rose Diseases and Pests, and Compendium of Bedding Plant Diseases and Pests). Raymond is a frequent speaker at state, national, and international conferences and seminars; and has received numerous awards and honors during his over 20 year academic career. Raymond's professional specialty areas include: plant protection, biological control, plant-insect interactions, insect ecology, pesticides, integrating pesticides with biological control agents, and sanitation.



“It’s only when you look at a flower really close-up that you can appreciate how beautiful it is – and how many creepy-crawlies live on it.” Chris Mad-den

OCTOBER PROGRAMMING NOTES

Plant set-up and socializing at 12:30 PM . Ribbon judging at 1 PM. At 1:30 announcements and plant discussion followed by a break. Talk at 2:15 or slightly sooner. Project plant distribution TBA

ORCHID QUEST 2024!

SAVE THE DATE!

February 3 & 4, 2024
Hosted at Olbrich Botanical Gardens

For more information go to OrchidGrowersGuild.org

Orchid Quest 2024 Up-Date

Orchid Quest 2024 will be February 3-4 with set up on Friday, February 2, 2024.

The first Orchid Quest planning meeting will be on Tuesday, October 10 at 7 pm by Zoom.

Details for Zoom will be emailed to members about October 1.

We will **briefly** go over all details of OQ, authorizing who is in charge of what activity.

— Terri Jozwiak

Thanks to everyone who sent plants to the show. Forty-one went but one had to be withdrawn because the blossom fell off. There were 28 ribbons, two Best of Class and one AM/AOS! And everyone who entered earned a ribbon. Yea OGG!

OGG RIBBON JUDGING RESULTS FROM WISCONSIN ORCHID SOCIETY SHOW

Set-up/Take-down: Lorraine Snyder, Denise Baylis, Jim Wasser, Jeff Metcalf

AOS Award Of Merit

Lorraine Snyder *Phrag.* Acker's Starlight (Twilight 'Riding Rocket' AM/AOS x *besseae* 'Peruvian Sunset')

Best Of Class

Christina Keeley *Vanda* Siriporn Pink (East More x Fuchs Delight 'Tony')
 Susan Reed *Phrag.* Red Sky (Demetra Mem. Don Walker HCC/AOS x Twilight 'Raising Rocket 4N' AM/AOS)

First Place

Orchid Growers Guild Exhibit
 Christina Keeley *Vanda lamellata* 'Okinawa'
 Christina Keeley *Vanda* Siriporn Pink (East More x Fuchs Delight 'Tony')
 Chuck Acker *Phrag.* Acker's Royalty (Twilight x *fischeri*)
 Chuck Acker *Phrag. besseae* 'Paute'
 Terri Jozwiak *Bulbophyllum crassipes*
 Susan Reed *Phrag.* Red Sky (Demetra Mem. Don Walker HCC/AOS x Twilight 'Raising Rocket 4N' AM/AOS)
 Gerry King *Phal.* Mituo Reflex DD 'Black Tiger' (Diamond Beauty x Mituo Reflex Dragon)
 Gerry King *Phal.* Yaphon Golden Dragon 'Red' (Golden Sun x Dragon Tree Eagle)

Second Place

Meg McLaughlin *Phrag.* Paul Eugene Conroy (*longifolium* 'Waunakee' x *wallisii*)
 Terri Jozwiak *Phrag. wallisii* x sib (*warscewiczianum*)
 Terri Jozwiak *Paph.* (Ouens Oak '10-10' x Acoma For Dinner '10-7')
 Susan Reed *Paph.* Faire-Maud (Maudiae 'Losos' x *fairrieianum*)
 Susan Reed *Paph. stonei*
 Lorraine Snyder *Phalaenopsis* (unregistered hybrid, pink with markings)
 Nancy Thomas *Dendrobium convolutum*
 Jeff Metcalf *Cym.* Golden Elf 'Sundust' (*ensifolium* x Enid Haupt)
 Lorraine Snyder *Phrag.* Peruflorea's Cirila Alca. (*kovachii* x *dalessandroi*) [class 45]
 Lorraine Snyder *Phrag.* Peruflorea's Cirila Alca. (*kovachii* x *dalessandroi*) [class 112]

Third Place

Meg McLaughlin *Phalaenopsis* Unknown Hybrid
 Jeff Baylis *Brassavola nodosa* x sib (Remar x Mas Mejor)
 Jeff Baylis *Phrag. dalessandroi* x sib (Acker's Flamenco Dance x 'Firefly')
 Chuck Acker *Phrag.* Josephine Bonaparte (Cardinale x *kovachii*)
 Terri Jozwiak *Odbrs.* Kenneth Bivin 'Santa Barbara' HCC/AOS (*Oncidium cariniferum* x *Brassia arcuigera*)
 Lorraine Snyder *Phrag.* St. Ouen Flava (Hanne Popow (4N) AM/RHS x *besseae* v flavum 'Chuck's Choice')
 Lorraine Snyder *Phalaenopsis* (unregistered hybrid, pink with markings)
 Jeff Metcalf *Masdevallia* Aquarius (*constricta* x *davisii*)
 Jeff Metcalf *Doritaenopsis* Queen Beer (*pulcherrima* x Meteor)

WISCONSIN ORCHID SOCIETY SHOW



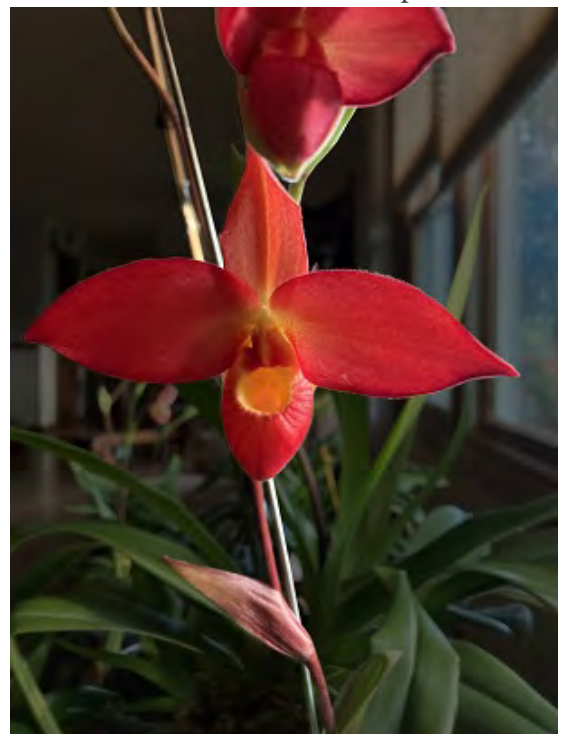
Orchid Growers Guild exhibit. First Place



Susan Reed's *Phrag.* Red Sky (Demetra Mem. Don Walker HCC/AOS x Twilight 'Raising Rocket 4N' AM/AOS) earned a Best of Class and first place



Deno Kandis of EIOS earned an AOS Award of Merit with 85 points for his *Paphiopedilum* Mark Hasegawa (*concolor* x *rothchildianum*)



Lorraine Snyder's *Phrag.* Acker's Starlight (Twilight 'Riding Rocket' AM/AOS x *besseae* 'Peruvian Sunset') earned an AOS Award of Merit with 83 points.



Christina Keeley's *Vanda lamellata* 'Okinawa' earned first place

Chuck's Orchid Challenge

At the September meeting Chuck Acker announced the return of "Chuck's Orchid Challenge".

As some of you may recall years ago, Chuck would provide orchid plants of the same variety, produced at Orchids by the Ackers for members to raise for approximately one year. After one year, the plants were judged for certain criteria (first bloom, most robust, etc.) and the winner was awarded a Gift Certificate to Orchids by the Ackers.

For this new-era challenge, Chuck has secured 50 *Gomesa (Oncidium) Jiaho* Queen 'Jia Ho' FCC/AOS from one of his Hawaiian grower friends. The Orchid Growers Guild is subsidizing your cost so as an OGG Member this is a fantastic opportunity for you to obtain this uniquely colored, very compact, easy to grow, blooming size plant at a minimal cost. It requires bright indirect light, will do well under lights and will be approximately one year from blooming. The flower spikes remain compact and bear flowers that are very sizable for this little plant! This variety has been seen on-line selling for over \$35 and are now mostly sold out due to their popularity.

(PRESIDENT'S MESSAGE Continued from page 1)

terested. The prices will range from \$20-45. Members will make their own arrangements for paying for these and the pick up of the plants.

Zoom meetings for Orchid Quest will be starting shortly, so please be available if possible to learn how you can help out. Helpful suggestions are always welcome and if there is some place you want to help out, please let Terri know lodijoz@charter.net and she will help you find your niche!

Thank you all for your membership and don't be shy about offering your talents to this organization!

— Sue Reed



Gerry King's
Gomesa
(*Oncidium*) *Jiaho*
Queen 'Jia Ho'
FCC/AOS

Members who are interested in participating in "Chuck's Orchid Challenge" pay only \$10 per plant (cash or check), bring your payment to the October meeting. The plants will be distributed at this meeting with instructions on how and when this plant challenge will be judged. Prizes will

be given for three different judged levels!

The participation in "Chuck's Orchid Challenge" is voluntary and a plant may be purchased without participating in the challenge.

How can you resist this little yellow and black flowered beauty in the month of October?

— Chuck Acker

For those of you who cannot attend meetings in person and would like to participate in the challenge, simply send your \$10 payment made out to OGG to the OGG Treasurer at 8735 Hidden Valley Road, Cross Plains 53528 and contact Chuck at cacker@tds.net to make arrangements to collect your plant.

Notes on *Paphiopedilum rothschildianum*:

Paph rothschildianum is considered by some to be the King of the paphs! There is a large amount of information about growing them on the internet for example: https://duckduckgo.com/?t=h_&q=paph+rothschildianum&iax=videos&iavideos&iai=https%3A%2F%2Fwww.youtube.com%2Fwatch%3Fv%3Dhp4z0Z4Oui4. Orchid Web has a You tube. Melissa's plants are from Sam's Orchid Inn, thus these are high quality. *Paph. rothschildianum* is an endangered species endemic to Borneo. They are a slow, intermediate grower and plants do last many years. They are not a high light plant but a larger paph sized plant. Check out the Orchid Web's You Tube about them.

Contributed by Sue Reed



Tristan's Tropical Fish LLC

YOU ARE INVITED!

Open House at Tristan's Tropical Fish

Sunday, October 21st, from 12 to 4 pm.

6528 N. State Road 213 & 59, Evansville, WI

There is a collection of Oncidium orchids with several seedlings available for purchase, along with several different species of terrarium plants. A few free orchids will be available for those interested.

For aquarium lovers, Tristan has a wide variety of tropical fish along with a diverse collection of aquatic plants available.

Tristan's website for more information:

<https://tristanstropicalfish.com/retail-store/>

Directions: Follow highway 213 South out of Evansville and turn at the first drive after passing the 55mph sign, this is less than 1/4 mile out of Evansville. Follow the strategically placed Tristan's Tropical Fish signs from here until you reach the store.

Odcdm California Gold



Orchids Are a Scream 2023 is Coming!

This month we all have another chance to show off our blooming beauties at **Eastern Iowa Orchid Society's "Orchids are a Scream 2023"**, held in Cedar Rapids, Iowa on **October 28-29**. This Halloween-themed show is always great fun, with cordial hosts, gorgeous displays, and lots of fabulous plants for sale from some of our favorite vendors. If you've wanted to experience an away show, this is the opportunity you've been looking for! Or if you've been thinking about sending your first plant to an away show, we'll help walk you through it. Sue Reed will be leading our team for this show with Nancy Thomas's assistance. If you'd like to ask questions or volunteer, feel free to contact them, or pull them aside at our October meeting. Remember, our participation in away shows is how we show our appreciation to the societies that help make Orchid Quest so great, so help us make a great showing for this one!

-- Nancy Thomas

Editor's note: A first-time entry from a new member earned a Best of Class at the WOS! (see right)

New member Christina Keeley with her Best of Class *Vanda Siriporn Pink* (East More x Fuchs Delight 'Tony')



DE-CODING ORCHID NAMES 101

- 1) GENUS - always listed first and begins in an upper case letter. Such as: **Phragmipedium** – NOT phragmipedium
- 2) SPECIES - species always begin in lower case letters. Such as: Phragmipedium **longifolium** - NOT Phragmipedium Longifolium
- 3) HYBRIDS - hybrids always begin in upper case letters. Such as: Phragmipedium **Eric Young** – NOT Phragmipedium eric young
- 4) CLONAL / VARIETAL NAME
 - a) When strictly referencing a variety of a naturally occurring species, the name(s) begin with lower case. Such as: Phragmipedium longifolium **album** - NOT Phragmipedium longifolium Album
 - b) When referencing an award or to differentiate an individual plant of a naturally occurring species or hybrid, the name(s) begin in upper case. Such as: Phragmipedium longifolium album **Zephyrus Mint** – NOT Phragmipedium longifolium album zephyrus mint
- c) When referencing an award or to differentiate an individual plant of a naturally occurring species or hybrid, the given name must be captured in single quotes. Such as: Phragmipedium longifolium album **'Zephyrus Mint'** – NOT Phragmipedium longifolium album Zephyrus Mint
- d) When referencing an awarded name of a species or hybrid, the type of award is always listed after the clonal/variatal name. Such as: Phragmipedium longifolium album **'Zephyrus Mint' HCC/AOS** – NOT Phragmipedium longifolium album HCC/AOS **'Zephyrus Mint'**

(Please keep this document for your referral needs. There will be a "De-Coding Orchid Names 102" coming soon!)
-- Chuck Acker



CHUCK ACKER'S PRESENTATION

As a starting point, Chuck provided a handout, "De-coding Orchid Names 101." See above.

Q & A

1. *When should plants be brought back inside?*

Pay attention to the weather forecast. Growing conditions are still favorable if the daytime temperature is about 15° F above the night temperature. When the range difference narrows, it's time to bring them in for the winter.

2. *Should plants be treated before bringing them in?*

It is best not to use toxic chemicals on plants that will be brought into the home. If necessary try using a "safer" pesticide.

3. *If a plant breaks into more than one piece, can the parts be potted in one pot for judging?*

This is OK if all the parts are from one plant.

(Continued on page 8)

(Continued from page 7)

4. *Cattleya with black leaf tips. What might be the cause and what is the treatment?*

It was determined that the plant was grown inside, watered with tap water and 20-20-20 fertilizer and the leaves kept dry when watering. An exact diagnosis is difficult to make. Many conditions might cause the leaves to look like this. Chuck recommends cutting off the damaged part of the leaf with a sterile tool. Be careful to avoid damaging the eyes on the growth. Dust with cinnamon (brand is unimportant). Cinnamon acts as a bactericide and fungicide.

The St. Augustine website is a great resource to research cultural problems: Orchid Culture, Orchid Growing Basics (staugorchidsociety.org)

5. *How to get back eyes on a rhizome to start growing?*

Count back 4 growths from the newest one and then cut through the rhizome. Do this without taking the plant out of the pot. After several months the old eye(s) should start to grow. Keiki paste (contains growth hormone) could also be applied to the eye (use sterile techniques).

6. *How to handle these common situations*

- Old pseudobulbs and leaves will naturally senesce. This is how plants recycle nutrients. They can be left alone until they can be easily plucked off.
- When repotting, make sure that the plant is set down in the medium at the point where the stem meets the roots. Roots that have come out of the potting mix can be put back in when repotting. It can be helpful to get the roots wet before repotting as this makes them more flexible and less likely to break. Phrags and Cymbidiums prefer a deep pot.

Paphs are happier in a lower profile pot. However, Phragmipedium hybrids with Phrag. besseae in the parentage may have a sprawling growth habit. In this case use a low wide pot to contain the stolons. It is possible to cut stolons without roots to create a division. Pot it in bark and place in a small dish of water. Maintain constant moisture until rooted. They should develop roots easily.

- Generally, each successive growth is larger on orchids. But if some in the environment caused stress the new growths may be stunted. It may take a while for the plant to recover and reverse this pattern. The stunted growths are not harming the plant and should be left alone.
- Mealy bugs can be treated with Bayer Rose and Flower pesticide spray. This product is both contact and a systemic treatment.
- Brown tips on Phragmipedium leaves could be an indication of calcium deficiency. Powdered oyster shell as a medium additive is helpful in preventing this issue.
- Dehydration in Phalaenopsis orchids can be helped by removing the flower spike that may be taxing the resources of the plant. Repotting from moss to bark is stressful for the plant. If a long “tap” root is found during repotting, cut it off so the plant can be placed at a proper depth in the pot. The pot size for Phals is determined by the number of healthy roots
- Phalaenopsis hybrids that usually have long lasting flowers include: Phal Fuller’s Sunset, Phal Surf Song, Phal Baldan’s Kaleidoscope, and Phal Sogo Yukidian ‘V3’

— Lynn West

EXPLORING OLBRICH'S ORCHIDS WALK

Saturday, October 21, 5-6:30 PM

Join Olbrich's conservatory and orchid horticulturist Irene Padlin for an inside look at Olbrich's orchid collection as she takes you on a lively tour of the Bolz Conservatory and Vera Lee Orchid House. This will be a casual walk packed with a lot of information and ample time for questions.

\$28/\$22 member

Registration deadline: October 16



Galeandra

There are 37 known species of this genus which can be found in South and Central America, the West Indies and Florida. Galeandra are not commonly found in orchid collections and they're rarely offered by commercial growers. Sunset Valley Orchid has one variety available and Louisiana Orchids has flasks and community pots. Some species include *Gal. dives*, *Gal. baueri*, *Gal. devoniana*, *Gal. greenwoodiana*, *Gal. leptocerus*, and *Gal. batemanii*

Galeandra are deciduous plants that require a rest period with no water. The plants have long-lasting blooms with at least two cycles which usually encompass the months June to November.

Plants break dormancy producing a new growth off of the previous year's pseudobulb, usually around May/June. When 2-3 inches of root-growth appears, watering/fertilizing can commence (Gary has had great success with sphagnum moss.) Water profusely and give the plant lots of sunlight or higher intensity LED lights. These plants require high light to bloom and Gary grows them under LED lights.

Don't allow to dry put. Fertilize with 1 Tsp Michigan State fertilizer per gallon RO wa-



ter. Flush with just RO water once per month. Twice a month add fertilizer to well water that has been allowed to sit for one day, this adds more minerals, especially calcium.

Reduce fertilizer to 1/2 tsp/gallon by the end of October. Stop fertilizing by end of November or when leaves start to turn the slightest yellow. In December, reduce watering as leaves turn yellow. No water by end of January.

Note that these are general guidelines. Some plants have a mind of their own, and accordingly, go in or out of dormancy on their own terms. Just remember to not water while plants are dormant to stave off root rot.

-- Gary Lensmeyer

ORCHID QUEST SILENT AUCTION

Do you know what makes a successful Silent Auction? YOU DO – the OGG members who donate a variety of items for the Silent Auction make it an exciting event at Orchid Quest.

We would like to invite all OGG members to start searching for those unique items in your home to donate and participate in this fundraiser for the guild. Items do not need to be orchid related as you may have noticed at past events.

Items can include artwork, books, knickknacks, plants, and anything else you think might pique the interest of the public. If you have items you would like to donate, we will start collecting donations at the November and December meet-

ings. Please complete the donation form listing each item and the minimum bid. (The form is attached with the newsletter and/or will be available at OGG meetings.)

If you have any questions, please contact Judy Williamson (judp2d@gmail.com; 608-577-5819) or Carrie Wiesman (Carrie.Wiesman@dwd.wi.gov; 608-242-0612).

And don't forget – donated items are tax deductible, and we can provide you with a receipt for tax purposes. So, go through those closets or your basement and pick out items that no longer trip your trigger and donate them to a worthy cause – OGG!

— Carrie Wiesman and Judy Williamson