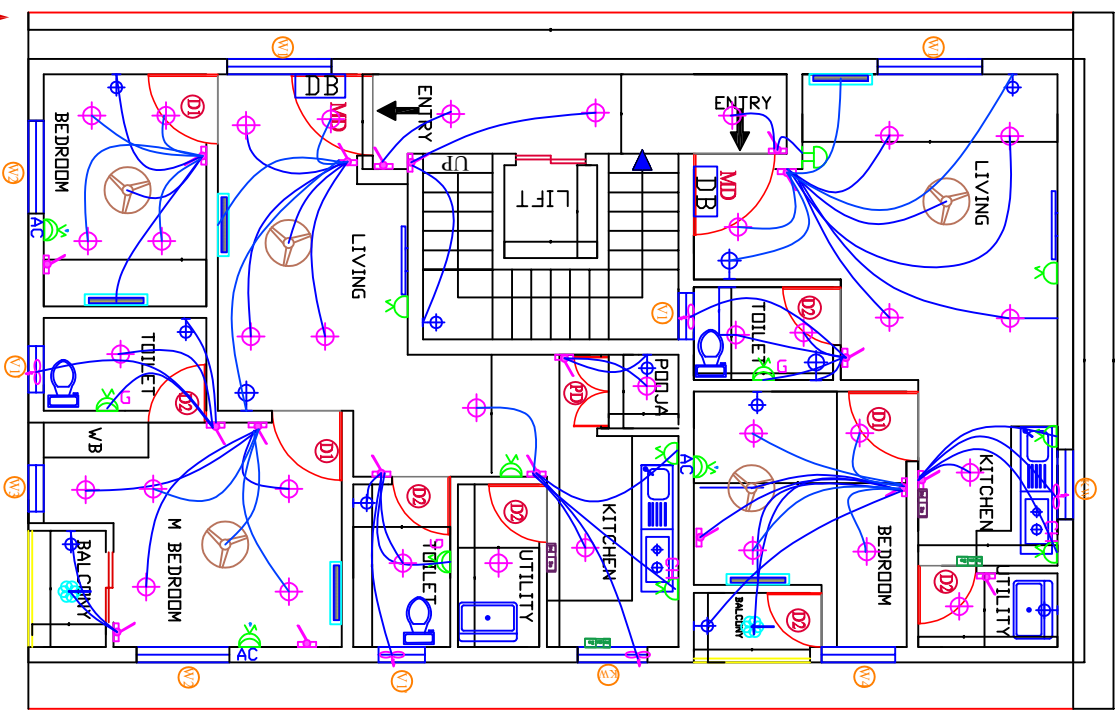




WEST
ROAD
1ST,2ND,3RD,4TH,5TH FLOOR



ELECTRICAL LEGEND

QTY

WATTS

TOTAL W

| | SWITCH BOARD AT 1050 MM FROM FFL | 18 | - | - | - |
|---|---|----|------|-------|---------|
| | CEILING LIGHT 20W | 33 | 20 w | 20 w | 660 W |
| | WALL BRACKET LIGHT AT 2100 MM FROM FFL | 13 | 9W | 9W | 117W |
| | BELL AT 2400 FROM FFL | 2 | - | - | - |
| | 2/3 PIN 6A SWITCHED SOCKET OUTLET AT 300 MM FROM FFL | 3 | 60W | 60W | 180W |
| | 3 PIN 6/16A SWITCHED SOCKET OUTLET AT 2100 MM FROM FFL FOR AC | 3 | 200W | 3000W | 9000W |
| | 3 PIN 6/16A SWITCHED SOCKET OUTLET AT 300 MM FROM FFL | 2 | 200W | 200W | 200W |
| | 3 PIN 6/16A SWITCHED SOCKET OUTLET AT 1800 MM FROM FFL FOR GEYSER | 3 | 200W | 2000W | 6000W |
| | 3 PIN 25A SWITCHED SOCKET OUTLET FOR AC AT 300 MM FROM FFL | 1 | - | - | - |
| | 2/3 PIN 6A SWITCH SOCKET OUTLET FOR CHIMNEY | 2 | 60W | 60W | 120W |
| | EXHAUST FAN AS PER WINDOW DETAIL | 5 | 40W | 40W | 200W |
| | CEILING FAN | 5 | 80W | 80W | 400W |
| | 4 Switch and 1 Socket 5A | - | - | - | - |
| | 2 Switch and 1 Socket 16A REFRIGERATOR | 2 | 800W | 800W | 1600W |
| | 2 SWITCH 2 SOCKET 16A | 2 | - | - | - |
| | Hanging light | 2 | - | - | - |
| | Tube light | 2 | 20W | 20W | 40W |
| THIS IS ONE FLOOR READING 1ST TO 5TH (1847)*5 = 73668 W | | | | | 18417 W |