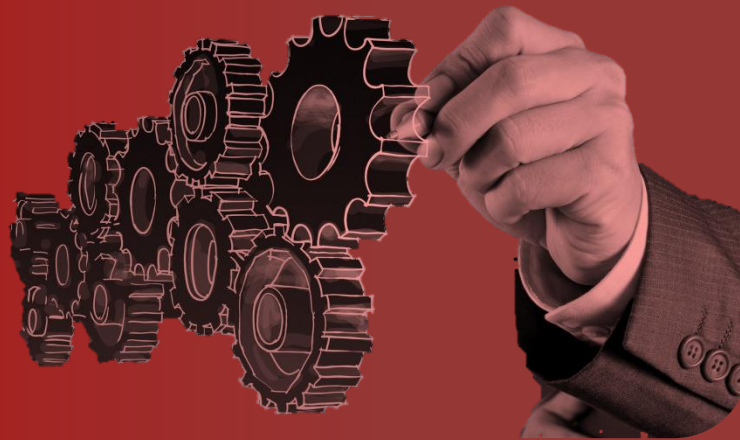




# Elite

Engineering & Design





## Driven to Outperform

Elite Engineering and Design is a Kamloops-based mechanical engineering consulting firm focused on providing innovative and practical design solutions for commercial and industrial clients. From conceptual design to project completion, we work closely with our clients to clearly understand their individual needs to ensure their projects exceed all safety and performance criteria while reducing production time and costs. We are fully licensed, insured and bonded and we value your confidentiality so you can trust your investment through every step of the design process.

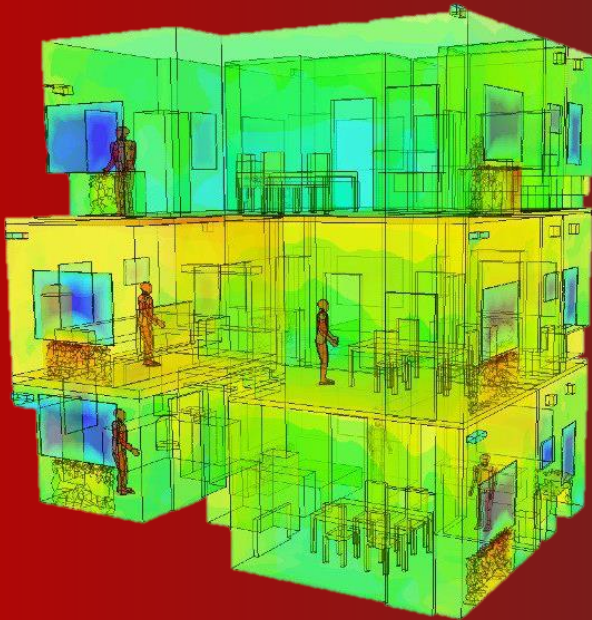
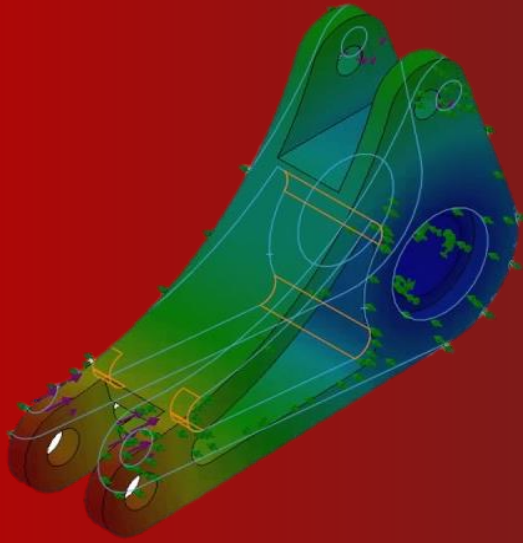
Our areas of expertise include (but not limited to):

- Industrial machinery
- Log and lumber handling systems
- Mining conveyor systems
- Industrial lifting devices
- Platforms
- HVAC systems & whole building energy analysis

## Mechanical Engineering Services

From inventions for small start-ups to large custom machinery for industrial corporations, there are always challenges in bringing a design to reality. We recognize these challenges and work closely with our clients at every step of the design process to ensure their project surpasses all regulatory and performance criteria. Our sophisticated 3D modelling allows us to also create a wide-variety of deliverables such as:

- Detailed CAD drawings for fabrication
- Accurate bill-of-material Lists (BOM's)
- FEA & CFD simulations
- Photorealistic renderings
- Animations (walk-through's, fly-by's etc.)



## Custom Mechanical Systems

Confirming and optimizing a design can be a lengthy and expensive endeavor. We assist our clients in enhancing their designs by utilizing advanced FEA and CFD simulation tools to confirm it meets all relevant industry standards. We virtually test our 3D CAD models in a variety of scenarios to predict a products real-world behavior and performance. This allows us to deliver realistic solutions that provide several key benefits such as:

- Reducing weight
- Increasing strength
- Reducing product development time
- Simulating fluid flow, heat transfer and fluid forces
- Locating problematic stress and flow areas

## Building Engineering Services

We provide engineering support for all of your HVAC and other mechanical system installations and retrofits to improve your buildings efficiency, performance, and reliability. This can include upgrading HVAC systems, boilers, pumps, or other equipment to meet current standards and regulations, reduce energy consumption, and lower operating costs.

We can provide precise and detailed energy models of the structural and building envelope allowing us to understand how to best size and utilize a new HVAC system for each individual building. We have completed several energy modelling and economic analysis to predict your buildings energy performance to ensure it meets requirements like the CMHC energy-efficient mortgage program.

We also provide support for all of your energy modelling to ensure your building meets and exceeds all of your LEED related goals.



## Project Support & Troubleshooting

To have a complete appreciation and understanding of our clients' project, we are happy to travel to site to take detailed measurements and field notes of the existing layout as well as attend any important project meetings. We utilize the most advanced measuring technology to ensure we have the most accurate and up-to-date information.

We provide a wide-range of industrial surveying services from equipment surveys to existing plant layouts. We also assist manufacturing shops in streamlining their production facilities to ensure a smooth flow of work, material and information.

## Large-Format Printing

We offer large-format and oversized blueprints, plans and shop drawings for architecture, engineering and construction professionals. Large-format drawings allows the sharing of ideas in an easy-to-read format and is essential for guiding design and trade staff on-site as well in the shop. Improving the way our clients communicate visually will result in a higher-quality product while reducing clients' labor and material costs.

Utilizing advanced printing technology, we ensure that we deliver the clearest and crisp images, allowing for detailed illustrations, precise line-drawings and high-resolution renderings, either in black and white or full color prints. To accommodate our client's busy schedule, we offer same-day onsite delivery within the Kamloops as well as express shipping through Canada Post for customers' residing outside Kamloops.





## Biography of Founder

### Terence Loring, P.Eng.

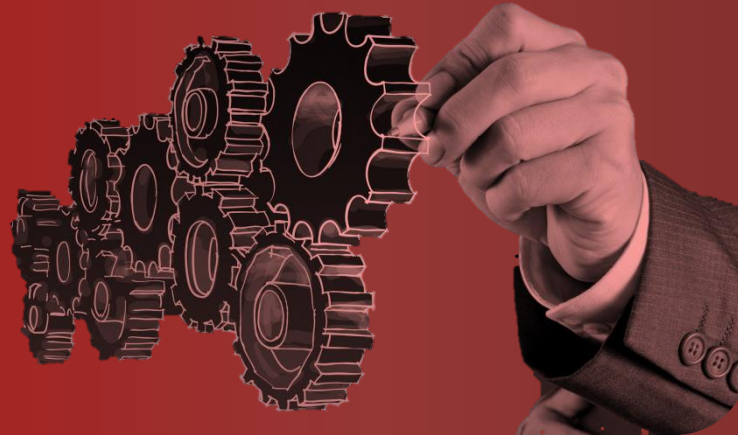
Terence Loring is a licensed Professional Mechanical Engineer (registered with EGBC) and the founder of Elite Engineering & Design. Terence has extensive experience designing a variety of commercial and industrial machinery.

After graduating from Carleton University in Mechanical Engineering in 2009, Terence was hired by Ontario Power Generation as an Assistant Plant Engineer (EIT) where his main duties included providing mechanical production and project support for 10 hydroelectric generating stations as well as being the onsite engineering support for several generator refurbishment and runner replacement projects.

After moving back to BC, Terence was employed as a mechanical designer (EIT) with various fabrication shops and Engineering firms where he developed conceptual and detailed designs for industrial machinery for clients in the mining and forestry industries. Terence also worked as a mechanical designer with a large industrial fabrication shop located in 100 Mile House, BC where he was responsible for completing the design and drafting of a variety of industrial machinery with an emphasis on conveyors systems for the mining and OSB industry.

Terence is also a licensed secondary math and science teacher spending time tutoring high school and University students in mathematics and other science subjects and even had the opportunity to instruct first year university physics and engineering physics labs at Thompson Rivers University.





**Elite**

**Engineering & Design**

**(250) 318-2826 / [www.eliteengineer.ca](http://www.eliteengineer.ca)**