

# AL-PAR PEAT co.

The One Source...for all your growing needs

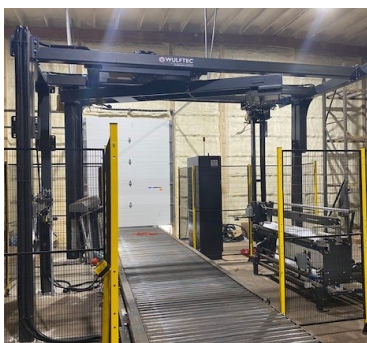
PHONE: (989) 661-7850

WEBSITE: [WWW.ALPARONESOURCE.COM](http://WWW.ALPARONESOURCE.COM)

Dec. 2020



*The new line includes this robot that is 12' tall, 8,000#, and can wrap up to 70 pallets per hour!*



## What is New at Al-Par Peat?

There is a new badge on our bagged products, **75 years!** Thank you to all the great clients who have trusted Al-Par Peat with their Greenhouse needs for the past 75 years. We look forward to helping you build many more successful years. Thank you!

## New Fully Automated Bagging Line!!

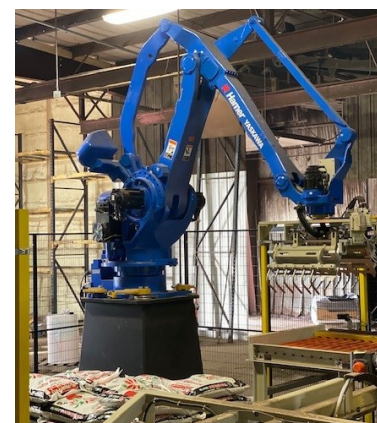
The new bagging line has arrived! This line includes automated rollers, 2 robots, and 1 person operation. This investment will create many benefits to your successful season. The benefits include; a more consistent product, greater efficiencies which will decrease lead times and help ensure product availability through the peak season. Other significant improvements include new equipment, larger warehousing, increased inventory with more container and soil options. The #1 goal of Al-Par Peat is to simply help you have your best season ever.

## 2020, A Season not Soon to be Forgotten

The 2020 season was full of ups and downs and unknowns. Thank you for your patience and patronage. It was because of our great clients that this season was so successful and the investments taken will ensure an even better 2021!

## EARLY ORDER PROGRAM ENDS 12-31-2020

- 3% OFF for all orders placed On or Before 12-31-20
- 5% OFF for all orders placed and prepaid by 12-31-20
- Deliveries to be made in March/April of 2021



*This robot is 13 feet tall 3,800#, and can stack a pallet in under 2 minutes*

## EMAIL ADDRESS = \$100

Send us your Email address and enter our monthly contest for a \$100 amazon card.

*As the new year begins, Al-Par is headed into the electronic age with; E-newsletters, E-quotes, & E-invoicing!!*

Send Email to:

[Carolyn@alparonesource.com](mailto:Carolyn@alparonesource.com)

**amazon**

## VISIT US on the WEB!

[ALPARONESOURCE.COM](http://ALPARONESOURCE.COM)

Tons of information, such as: product info, inventory and **Specials!**

[Check It Out!](#)

Jeff Campbell: (989) 277-9129 [jeffc@alparonesource.com](mailto:jeffc@alparonesource.com)

Brent Tuma: (989) 277-6141 [brent@alparonesource.com](mailto:brent@alparonesource.com)

Derek Parmenter: (989) 277-4720 [derek@alparonesource.com](mailto:derek@alparonesource.com)

Matt Veale: (989) 277-1897 [matt@alparonesource.com](mailto:matt@alparonesource.com)

PHONE: (989) 661-7850

WEBSITE: [WWW.ALPARONESOURCE.COM](http://WWW.ALPARONESOURCE.COM)

FAX: (989) 661-7854

CHECK OUT OUR WEBSITE FOR MORE DEALS

[WWW.ALPARONESOURCE.COM](http://WWW.ALPARONESOURCE.COM)

### ORDER YOUR GREENHOUSE SUPPLIES NOW

FLATS, INSERTS, GROWING POTS IN ROUNDS & SQUARES, CARRIERS, AND PLUG TRAYS.

GET YOUR ORDER IN NOW!



**J&D Manufacturing**

Exhaust Fans, Recirculation Fans, Controls, Lighting, and more available, ask your Salesman for more information!



### Planters In Stock and On Sale



10" LAURIE PLANTER	1.05 EA
12" LAURIE PLANTER	1.70 EA
14" LAURIE PLANTER	2.65 EA
13" BARREL PLANTER	2.50 EA
13" CHRISTIAN BELL PLNTR	2.35 EA
14" HEX POT PLANTER	2.79 EA
14" BIANCA BOWL	1.79 EA
14" SQUARE PLANTER CHOC	3.89 EA
14" KATRINA SQUARE COPPER	3.75 EA
18" ONDA PLANTER BRONZE	6.50 EA
24" BRICK WINDOW BOX	3.75 EA

**\*\* WHILE SUPPLIES LAST!!**



The HC Companies™  
Leader in Horticultural Containers

Visit [www.hc-companies.com](http://www.hc-companies.com) for more product details

**Pallet Quantity Discounts! Call for more info!**



**DeWitt**  
DOWN TO EARTH PROTECTION

3'X300' Ground Cover Roll	\$49.00/Roll
4' X300' Ground Cover Roll	\$59.00/Roll
6'x300' Ground Cover Roll	\$88.00/Roll
12'x300' Ground Cover Roll	\$184.00/Roll
15.5'x300' Ground Cover Roll	\$245.00/Roll
2"x8" 8 Gauge Ground Staples	\$82.50/Box

**MODINE**

ORDERS ARE STILL OPEN FOR HEATERS. Upgrade your greenhouse now before the **COLD!**

PTP150K BTU  
PTP200k BTU  
PTP250k BTU  
PTP300k BTU  
PTP350k BTU



**High-Efficiency Models Available**

### Sales Contact Info

Jeff Campbell: (989) 277-9129 [jeffc@alparonesource.com](mailto:jeffc@alparonesource.com) Derek Parmenter: (989) 277-4720 [derek@alparonesource.com](mailto:derek@alparonesource.com)  
Matt Veale: (989) 277-1897 [matt@alparonesource.com](mailto:matt@alparonesource.com) Brent Tuma: (989)277-6141 [brent@alparonesource.com](mailto:brent@alparonesource.com)