

Nursery Containers

Injection Molded

- With our Dillen and ProCal Nursery Containers, growers have the most extensive selection sized for regional growing requirements
- Superior strength for a wide range of nursery applications
- Heavy duty rims for strong performance at potting, floor stacking during shipping and at retail
- Two large drainage hole configurations; side drain and bottom drain
- Ideal for ornamental trees, shrubs and ground covers
- Traditional and Squat styles



Thermoformed

- Economical alternative to heavy duty injection molded containers
- Bottom hole drainage allows for more efficient irrigation and helps stimulate healthier root structure
- Durable build ideal for handling, transport and automation
- Smooth, matte exterior



Blow Molded

- Includes brand names such as Amerikan, ITML and Whiteridge
- Wide variety of durable Polyethylene growing containers
- Sturdy corners and wide base designed for a stable, upright presentation of nursery stock during the growing cycle and at the retail nursery garden center
- Durable containers with ribs for added strength



Branded Containers

- Personalized branding opportunities available for injection molded and thermoformed products
- National branded programs available for grower networks
- Offset printing available for select sizes



New 5.00 Gallon Ultra Nursery Pot (NEU005G0)

- Features a sturdy base to provide stability in shipping and handling
- Designed with a wine bottle interior for superior soil savings
- Sturdy walls are ideal for landscaping

Thermo Formed Nursery Containers



TFQ001Q0



TFT025Q1



TSP001G0



TFR001G0



TFH001G0



TFT001G0



TFR002G1



TFT002G0



TFR003G0



TFT003G0



TFT225G0



TFU003G0



TFR005G0



TSP005G0

Part Code	Product Description	Outside Diameter		Height		Max Liquid Volume		Bulk Qty
		Inches	cm	Inches	cm	US	Metric	
TFQ001Q0	1.00 QT Thermo Nursery Pot	4.25	10.79	4.62	11.73	1.00 qt	946 mL	22,880
TFT025Q1	K 2.50 QT Thermo Nursery Pot	6.25	15.87	6.50	16.51	2.50 qt	2.36 L	7500
TSP001G0	1.00 G Short Thermo Nursery Pot	6.50	16.51	6.50	16.51	2.66 qt	2.52 L	9500
TFR001G0	P 1.00 G Thermo Nursery Pot	6.50	16.51	7.00	17.78	2.87 qt	2.72 L	7500
TFH001G0	1.00 G Heavy Thermo Nursery Pot	6.50	16.51	7.00	17.78	2.87 qt	2.72 L	7500
TFT001G0	P 1.00 G True Thermo Nursery Pot	7.87	19.98	7.25	18.41	1.00 gal	3.70 L	5070
TFR002G1	P 2.00 G Thermo Nursery Pot	8.80	22.35	8.50	21.59	1.74 gal	6.50 L	3240
TFT002G0	P 2.00 G True Thermo Nursery Pot	9.50	24.13	9.25	23.49	2.00 gal	7.50 L	3500
TFR003G0	P 3.00 G Thermo Nursery Pot	10.25	26.03	9.12	23.16	2.58 gal	9.78 L	1800
TFT225G0	2.25 G Thermo Nursery Pot	10.37	26.34	8.45	21.46	2.25 gal	8.52 L	2000
TFT003G0	P 3.00 G True Tall Thermo Nursery Pot	10.50	26.67	11.75	29.84	3.00 gal	11.40 L	2600
TFU003G0	P 3.00 G True Thermo Nursery Pot	11.00	27.94	10.31	26.18	3.05 gal	11.54 L	3200
TFR005G0	P 5.00 G Thermo Nursery Pot	11.00	27.94	12.00	30.48	3.58 gal	13.50 L	1584
TSP005G0	5.00 G Short Thermo Nursery Pot	12.00	30.48	10.50	26.67	3.58 gal	13.50 L	1472

K = Heavy Thick Wall Version Available | P = Offset Printing Available



Injection Molded Nursery Containers



NCT01000



NCT01001



NBB001G0



NSB001G0



NBB08000



NLS00020



NLR00020



NCT02000



NSB002G0



NBB002G0



NSS003G0



NBB003G0



NSR003G0



NLR00030



NLE00050



NUE005G0



NBB005G0



NSS005G2



NER005G0



NCS05000



NLT00050





NSS006G0



NSS007G1



NSR007G0



NSS007G0



NRT07000



NLR00070



NSS010G0





NER015G0



NSS015G0



NSS020G0

Part Code	Product Description	Outside Diameter		Height		Max Liquid Volume		Bulk Qty	Tray Compatibility
		Inches	cm	Inches	cm	US	Metric		
 1000	#1 Pot Nursery Container	6.25	15.87	6.75	17.14	2.72 qt	2.57 L	8700	TIA10000
NCT1001	#1 TagSlot Pot	6.25	15.87	6.75	17.14	2.72 qt	2.57 L	8700	TIA10000
NBB001G0	P 1.00 G Bottom Drain Nursery Pot	6.50	16.51	7.00	17.78	2.94 qt	2.78 L	6500	
NSB001G0	P #1 Gal Side Drain Nursery	6.00	15.24	7.00	17.78	2.95 qt	2.79 L	6500	
NBB08000	P 8.00 Bottom Drain Nursery Pot	7.50	19.05	7.00	17.78	1.00 gal	3.70 L	4212	
NLS00020	2.00 Gallon Short Nursery Pot	8.50	21.59	6.37	16.17	1.08 gal	4.10 L	2500	
NLR00020	2.00 Gallon Nursery Pot	8.75	22.22	8.50	21.59	1.51 gal	5.70 L	2970	
NCT02000	#2 TagSlot Pot	8.87	22.52	8.25	20.95	1.67 gal	6.31 L	3600	
NSB002G0	P #2 Gal Nursery Container	9.00	22.86	8.56	21.74	1.72 gal	6.50 L	2700	
NBB002G0	P 2.00 G Bottom Drain Nursery Pot	9.00	22.86	8.37	21.25	1.74 gal	6.57 L	2700	
NSS003G0	3.00 G Squat Nursery Pot	10.00	25.40	8.00	20.32	2.14 gal	8.11 L	1400	
NBB003G0	P 3.00 G Bottom Drain Nursery Pot	10.37	26.33	8.87	22.52	2.54 gal	9.63 L	1800	
NSR003G0	P #3 Gal Nursery Container	10.50	26.67	9.00	22.86	2.62 gal	9.91 L	1800	
NRT0T3G2	3.00 T3G Tag Locator	10.75	27.30	9.50	24.13	2.76 gal	10.60 L	1400	
NLR00030	3.00 Gallon Nursery Pot	11.12	28.24	9.25	23.49	3.00 gal	11.36 L	1200	
NLE00050	5.00 Gallon Egg Can	10.87	27.60	12.00	30.48	3.30 gal	12.50 L	1170	
NBB005G0	P 5.00 G Bottom Drain Nursery Pot	11.00	27.94	12.12	30.78	3.67 gal	13.90 L	1440	
NSS005G2	#5 Gal Squat Nursery Container	12.00	30.48	10.25	26.03	3.75 gal	14.20 L	960	
NUE005G0	5.00 Gallon Ultra Nursery Pot	11.00	27.94	11.25	28.57	3.00 gal	11.36 L	1600	
NER005G0	#5 Gal Nursery Container	11.00	27.94	11.50	29.21	3.76 gal	14.20 L	1440	
 5000	#5 Squat Pot	12.75	32.38	9.00	22.86	4.05 gal	15.33 L	1120	
NLR00050	5.00 Tub	13.00	33.02	9.00	22.86	4.09 gal	15.50 L	600	
NSS006G0	6.00 G Squat Nursery Pot	13.00	33.02	9.12	23.16	4.19 gal	15.80 L	780	
NSS007G1	7.00 G Squat SPL Nursery Pot	14.25	36.19	11.50	29.21	5.99 gal	22.60 L	675	
NSR007G0	7.00 Gal Nursery Pot	12.75	32.38	14.50	36.83	6.24 gal	23.60 L	600	
NSS007G0	7.00 G Squat Nursery Pot	15.00	38.10	11.75	29.84	7.28 gal	27.50 L	540	
NRT07000	7.00 7G With Handle	15.00	38.10	13.50	34.29	7.36 gal	28.30 L	540	
NLR00070	7.00 Gallon Nursery Pot	16.25	41.27	11.75	29.84	7.90 gal	29.90 L	360	
NSS010G0	10.00 G Squat Nursery Pot	18.00	45.72	12.00	30.48	9.64 gal	36.50 L	396	
NLR00150	15.00 Gallon Nursery Pot	16.50	41.91	17.50	44.45	11.26 gal	42.60 L	315	
NER015G0	15.00 Gallon Side Drain Tall Economy Nursery Pot	16.50	41.91	17.75	45.08	11.80 gal	41.94 L	594	
NSS015G0	15.00 G Squat Nursery Pot	19.25	48.89	15.00	38.10	12.70 gal	48.20 L	360	
NSS020G0	20.00 G Squat Nursery Pot	22.00	55.88	17.00	43.18	19.70 gal	74.80 L	216	

P = Offset Printing Available

Blow Molded Containers



BMS03000
BMS03000(K)



BM.03000
BM.03000(K)



BM.04000
BM.04000(K)



BDS10000



BM.06000
BM.06000(K)



AMK06000
AMK06000(K)



AMK06002,
AMK06003(K)



AMK06004



AMK10010



AMK10012



AMK10000



AMK10002



AMK10001



AMK10005



BM.10000



AMK11004
AMK11005



AMK10003



BMS12000

Part Code	Product Description	Outside Diameter		Height		Max Liquid Volume		Bulk Qty
		Inches	cm	Inches	cm	US	Metric	
BMS03000	K Elite 300 Squat Nursery Pot	6.50	16.51	6.37	16.17	2.49 qt	2.35 L	10,080
BM.03000	K Elite 300 Nursery Pot	6.50	16.51	7.00	17.78	3.00 qt	2.84 L	10,808
BM.04000	K Elite 400 Nursery Pot	7.50	19.05	7.25	18.41	1.00 gal	3.78 L	10,080
BDS10000	Elite 1000 Squat Nursery Pot	10.00	25.40	6.25	15.87	1.50 gal	5.67 L	4500
BM.06000	K Elite 600 Nursery Pot	8.75	22.22	8.50	21.59	1.60 gal	6.05 L	5500
AMK06000	K 2.00 Gallon 600 Regular Pot	8.50	21.59	8.50	21.59	1.66 gal	6.30 L	5400
AMK06002	K 2.00 Gallon 600 High Hole Pot	8.50	21.59	8.50	21.59	1.66 gal	6.30 L	5400
AMK06004	2.00 Gallon 600 Regular Pot No Hole	8.50	21.59	8.50	21.59	1.66 gal	6.30 L	5400
AMK10010	3.00 Gallon 1001 Regular Pot	9.50	24.13	8.62	21.89	1.90 gal	7.20 L	5400
AMK10014	3.00 Gallon 1001 Regular Bottom Hole Pot	9.50	24.13	8.62	21.89	1.91 gal	7.29 L	5400
AMK10012	3.00 Gallon 1001 High Hole Pot	9.50	24.13	8.62	21.89	2.00 gal	7.57 L	5400
AMK10000	3.00 Gallon 1000 Regular Pot	10.00	25.40	9.00	22.86	2.33 gal	8.83 L	4400
AMK10002	3.00 Gallon 1000 High Hole Pot	10.00	25.40	9.00	22.86	2.33 gal	8.83 L	4400
AMK10001	3.00 Gallon 1000 No Bottom Hole Pot	10.00	25.40	9.00	22.86	2.33 gal	8.83 L	4400
AMK10005	3.00 Gallon 1000 No Hole Pot	10.00	25.40	9.00	22.86	2.33 gal	8.83 L	4400
BM.10000	K Elite 1000 Nursery Pot	10.00	25.40	9.00	22.86	2.33 gal	8.82 L	3960
AMK11004	2.00 Gallon 1100 Cover Pot Bottom Hole Pot	10.00	25.40	9.75	24.76	2.36 gal	8.94 L	3036
AMK11005	2.00 Gallon 1100 Cover Pot No Hole Pot	10.00	25.40	9.75	24.76	2.36 gal	8.94 L	3036
AMK10003	3.00 Gallon 1000 Tall Pot	10.00	25.40	10.25	26.03	2.50 gal	9.40 L	4140
BMS12000	Elite 1200 Squat Nursery Pot	11.00	27.94	7.62	19.35	2.50 gal	9.47 L	3000

K = Heavy Thick Wall Version Available

Blow Molded Containers



BM.S16000 BMS160H0 BM.12000 AMK12000 AMK12000(K) BM.16000 BM.160H0 BM.20000

NEW



BM.200H0 BWS00050 BM.28000 BW.00070 BWS00070 BWS00100



BW.00100 BW.00150 BWS00200 BW.00250 BW.00250(K) BW.00450 BW.00650

Part Code	Product Description	Outside Diameter		Height		Max Liquid Volume		Bulk Qty
		Inches	cm	Inches	cm	US	Metric	
BMS16000	Elite 1600 Squat Nursery Pot	11.87	30.14	7.75	19.68	2.88 gal	10.90 L	2400
BMS160H0	Elite 1600 Pot Squat With Handles	11.87	30.14	7.75	19.68	2.88 gal	10.90 L	2400
BM.12000	Elite 1200 Nursery Pot	11.00	27.94	9.62	24.43	3.00 gal	11.36 L	3000
AMK12000	3.00 Gallon 1200 Regular Pot	11.00	27.94	9.62	24.43	3.00 gal	11.35 L	3000
BM.16000	Elite 1600 Nursery Pot	11.87	30.14	10.12	25.70	3.75 gal	14.20 L	2400
BM.160H0	Elite 1600 Pot With Handles	11.87	30.14	10.12	25.70	3.75 gal	14.20 L	2400
BM.20000	Elite 2000 Nursery Pot	11.87	30.14	11.00	27.94	3.90 gal	14.76 L	2400
BM.200H0	Elite 2000 Pot With Handles	11.87	30.14	11.00	27.94	3.90 gal	14.80 L	2400
BWS00050	Whiteridge BM 5 Squat	13.75	34.92	9.00	22.86	5.00 gal	18.92 L	1008
BWS00055	NEW 5.00 Whiteridge BM 5 Squat w/Handles	14.00	35.56	9.30	23.62	5.01 gal	18.97 L	1008
BM.28000	Elite 2800 Nursery Pot	14.00	35.56	10.50	26.67	4.67 gal	17.68 L	1575
BW.00070	Whiteridge BM 7	13.75	34.92	12.00	30.48	6.52 gal	24.68 L	1008
BWS00070	Whiteridge BM 7 Squat	16.00	40.64	11.62	29.51	7.50 gal	28.39 L	800
BWS00100	Whiteridge BM 10 Squat	17.75	45.08	11.75	29.84	9.72 gal	36.78 L	540
BW.00100	Whiteridge BM 10	16.00	40.64	15.37	39.03	10.02 gal	37.93 L	800
BW.00150	Whiteridge BM 15	17.75	45.08	15.75	40.00	15.00 gal	56.78 L	450
BWS00200	Whiteridge BM 20 Squat	23.75	60.32	14.00	35.56	21.75 gal	82.33 L	220
BW.00250	Whiteridge BM 25	23.75	60.32	17.00	43.18	26.50 gal	99.32 L	220
BW.00450	Whiteridge BM 45	30.75	78.10	20.00	50.80	45.00 gal	170.34 L	106
BW.00650	Whiteridge BM 65	32.00	81.28	24.00	60.96	61.50 gal	232.80 L	96

K = Heavy Thick Wall Version Available



Flats, Inserts & Plug Trays

Injection Flats & Trays

- Large range of Injection Molded Flats provide outstanding strength and effective insert holding for automation efficiency
- All Injection Flats deliver increased flexibility and economy
- Flexible, durable, and open – perfect for all plant sizes
- Injection Spacer Trays (IST) – ideal for multiple transport, growing, and shipping applications
- Open design provides optimal air circulation which prevents algae bloom and stimulates plant growth
- Perfect for capillary mats, ebb and flood, or flooded floor watering systems

Injection Plug Trays

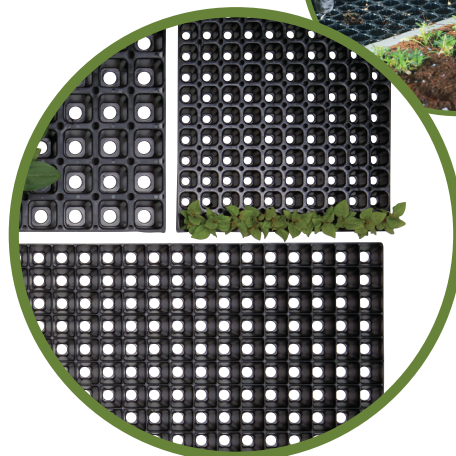
- Large selection of Plug Trays and Propagation Strips are constructed from “No break” polymer material for flexibility and durability that stands up to steam sterilization, high-pressure cleaning, and disinfectants
- Two Standard Plug Trays in the 288 and 512 configurations conform to the Common Element (CE) guidelines for Plug Trays

Vacuum Plug Trays

- Choose round, square or hex cells; Common Element, True, or Standard dimensions
- Precision punched holes guarantee optimal drainage and air pruning performance
- Trays available with stacking notches for quick and easy de-nesting in automated equipment

Vacuum Inserts & Flats

- Dillen's high-quality bedding plant containers designed to optimize performance in automated handling systems—ideal for filling, growing, and shipping
- Match with Injection or Vacuum Flats to create an efficient growing system
- Precision burned holes and die-cut trims deliver consistent performance
- Optional labeling to display plant information and UPCs
- Shipped in corrugated boxes or bulk with a weatherproof wrap to prevent damage
- Choose from a variety of rib configurations to fit any growing need



Easy to Use Reference For Product Sizes

Plants per Pack	Packs per Flat	Plants per Flat	7.50 x 20.00	8.00 x 20.00	8.25 x 20.00	8.50 x 20.00	10.00 x 20.00
6	3	18		306			306
6	4	24	406	406			
6	6	36	606		606	606	606
6	10	60					1006
8	5	40				508	
18	1	18		118			118
12	2	24	1201				1201
4	10	40					1004
24	2	48			224		224

New Space Saving Inserts and Flats

- New design saves growers half inch of bench space!
- Each cell now features a unique “U” shaped drainage hole allowing the plant material to be removed more efficiently by consumer.
- Curved handle slot is designed to firmly secure handle for ease of carrying by consumer.



INM04065



TVH.1201



INM12011

Part Code	Product Description	Dimensions in Inches			Volume Pack		Volume Cell		Case Pack	Bulk Qty
		Length	Width	Height	US	Metric	US	Metric		
INM04065	406 Basket Pack	7.50	5.00	3.94	1.27 qt	1.20 L	0.42 pt	0.20 L	400	16,000
TVH.1201	Vacuum Tray for 406 & 1201	7.00	10.00	1.82					100	4000
INM12011	1201 Basket Pack	7.50	10.00	3.94	2.54 qt	2.40 L	0.42 pt	0.20 L	200	8000

Half Packs



IJM01091



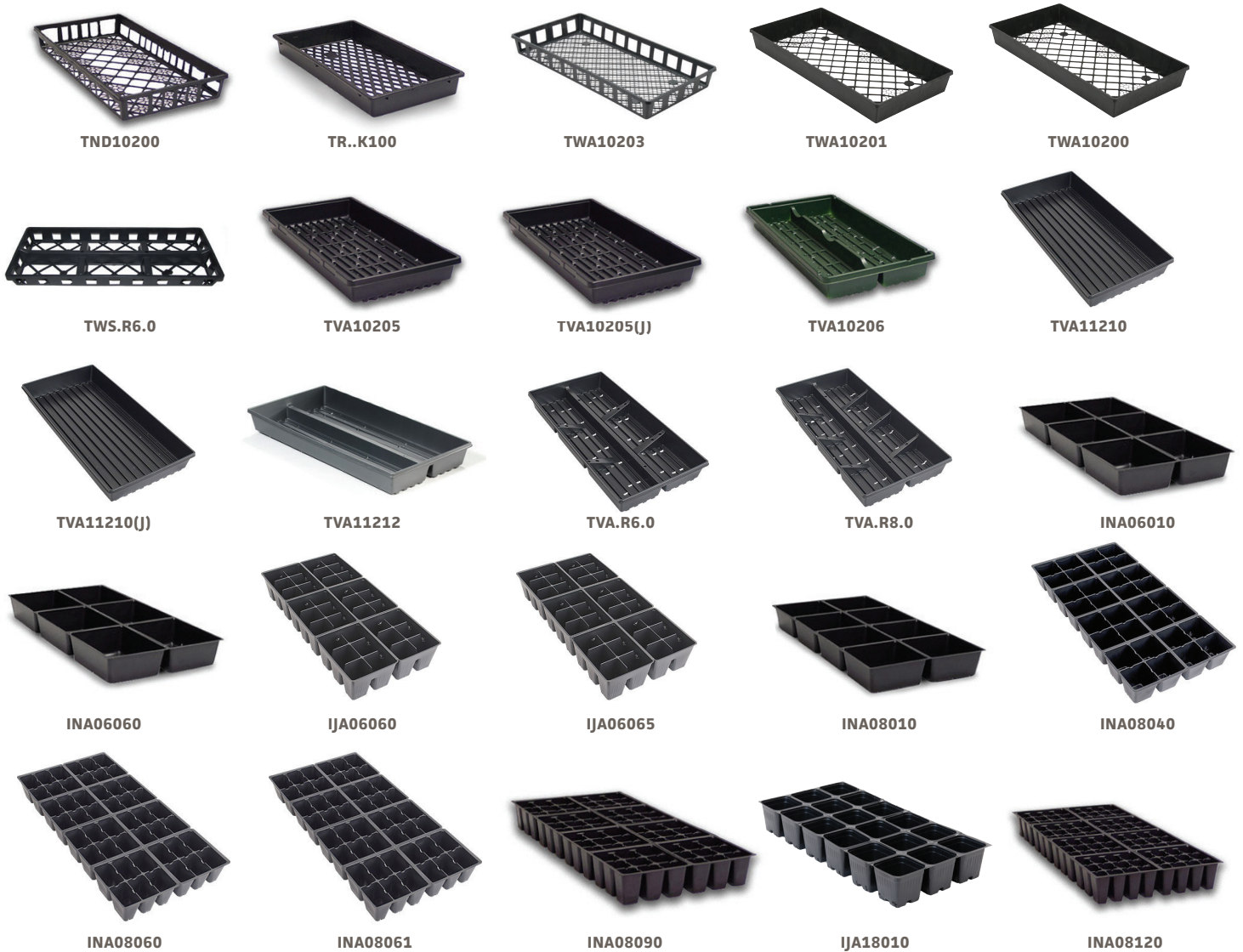
IJS01201



INT01120

Part Code	Product Description	Dimensions in Inches			Max Liquid Volume		Case Pack	Bulk Qty	Tray Compatibility
		Length	Width	Height	US	Metric			
Half Packs									
IJM01091	WM 109 Half Pack Skinny Minnie	10.00	8.00	3.13	2.49 qt	2.36 L	100	6600	TVM.R200
IJS01201	WM 1201 Half Pack Slim Jim With Handle Hole	10.00	8.00	3.00	1.87 qt	1.76 L	200	10,800	TVM.R200
INT01120	1201 True Half Pack Insert	10.00	8.00	4.06	3.94 qt	3.73 L	100	5400	TWTR1.0

Standard & Traditional Inserts & Trays



Part Code	Product Description	Dimensions in Inches			Case	Bulk
		Length	Width	Height		
Standard & Traditional Flats						
TND10200	1020 Daisy Tray	21.00	10.75	2.38	50	
TR..K100	K-10 Heavy Duty Carrying Tray	21.50	11.25	2.25	50	
TWA10203	1020 Standard Lightweight Flat	21.13	10.50	2.50	50	2700
TWA10201	1020 Standard Medium Weight Flat	21.13	10.50	2.50	50	2700
TWA10200	1020 Standard Heavy Weight Flat	21.13	10.50	2.50	50	2700
TWS.R6.0	8520 R6 Long Slim Jim Flat With Ribs	21.00	8.25	2.00	50	
TVA10205	1020 Traditional Open Tray	21.50	11.00	2.50	100	
TVA10205(J)	1020 Traditional Open Tray No Hole	21.50	11.00	2.50	100	
TVA10206	1020 Traditional Center Rib Tray	21.50	11.00	2.50	100	
TVA11210	1020 Standard Full Depth Vacuum Flat	21.00	10.50	2.38	100	3600
TVA11210(J)	1020 Standard Full Depth Vacuum Flat No Hole	21.00	10.50	2.38	100	
TVA11212	1020 Standard Full Depth Vacuum Flat (With Ribs)	21.00	10.50	2.38	100	3600
TVA.R6.0	1020 R6 Standard Full Depth Vacuum Flat	21.00	10.50	2.38	100	
TVA.R8.0	1020 R8 Standard Full Depth Vacuum Flat	21.00	10.50	2.38	100	3600

Standard & Traditional Inserts & Trays

Flats & Trays



INA10010



INA10040



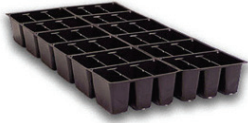
INA10060



INA12010



INA12020



INA12030



INA12040



INA12060



INA18010

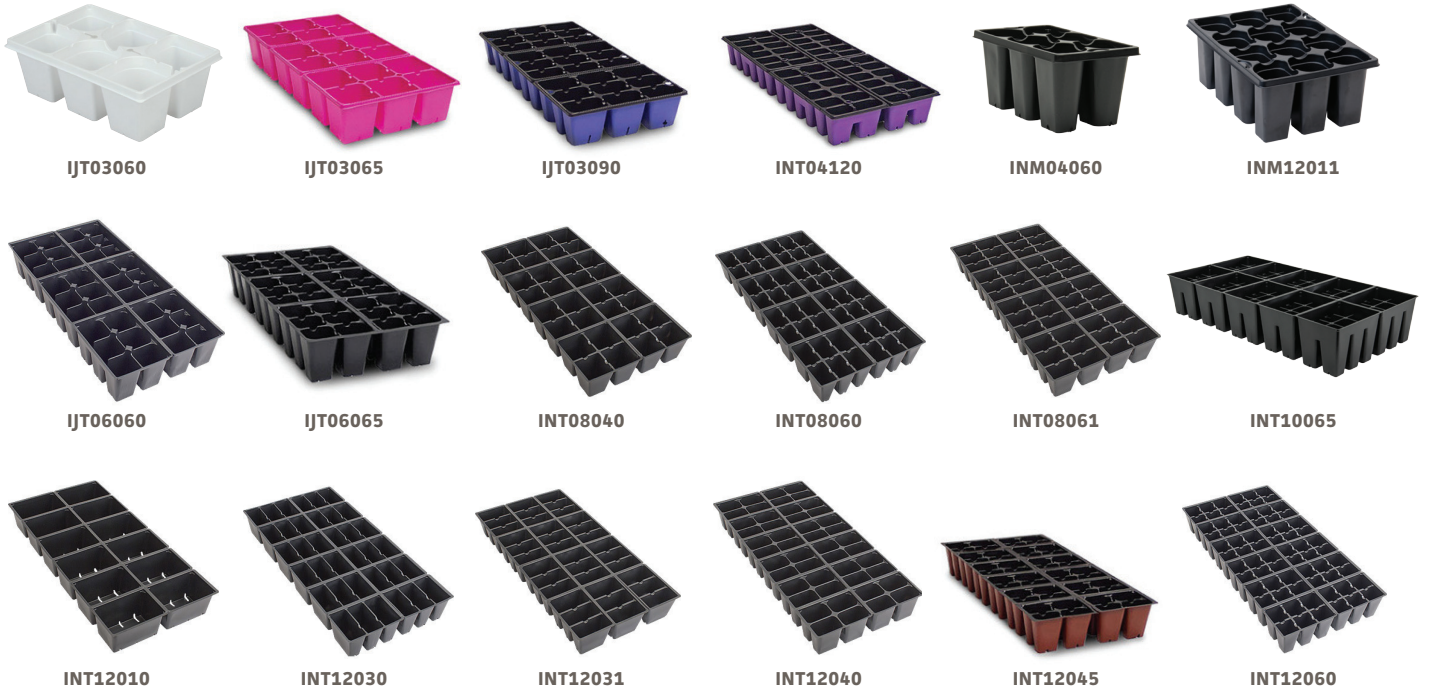


INA18040

Part Code	Product Description	Cubic Inch Capacity	Max Liquid Volume		Outside Dimensions in Inches			Case	Compatible Tray
			US	Metric	Length	Width	Height		
INA06010	601 Traditional Insert	64.70	1.12 qt	1.06 L	21.00	10.50	2.25	100	TND10200, TR..K100, TWA10203, TWA10201, TWA10200, TVA10205, TVA10205(J), TVA10206, TVA11210, TVA11210(J), TVA11212, TVA.R6.0
INA06060	D606 Standard Insert	54.92	1.90 pt	900 mL	21.00	10.50	2.25	100	TND10200, TR..K100, TWA10203, TWA10201, TWA10200, TVA10205, TVA10205(J), TVA10206, TVA11210, TVA11210(J), TVA11212, TVA.R6.0
IJA06060	606 Standard Jumbo Insert	76.89	1.33 qt	1.26 L	20.00	10.00	3.25	100	TND10200, TR..K100, TWA10203, TWA10201, TWA10200, TVA10205, TVA10205(J), TVA10206, TVA11210, TVA11210(J), TVA11212, TVA.R6.0
IJA06065	606 Deep Insert	67.00	1.16 qt	1.10 L	20.00	10.00	3.25	100	TND10200, TR..K100, TWA10203, TWA10201, TWA10200, TVA10205, TVA10205(J), TVA10206, TVA11210, TVA11210(J), TVA11212, TVA.R6.0
INA08010	D801 Standard Insert	49.43	1.71 pt	810 mL	21.00	10.50	2.25	100	TND10200, TR..K100, TWA10203, TWA10201, TWA10200, TVA10205, TVA10205(J), TVA10206, TVA11210, TVA11210(J), TVA11212, TVA.R8.0
INA08040	D804 Standard Insert	39.67	1.37 pt	650 mL	21.00	10.50	2.25	100	TND10200, TR..K100, TWA10203, TWA10201, TWA10200, TVA10205, TVA10205(J), TVA10206, TVA11210, TVA11210(J), TVA11212, TVA.R8.0
INA08060	D806 Standard Insert	37.22	1.29 pt	610 mL	21.00	10.50	2.25	100	TND10200, TR..K100, TWA10203, TWA10201, TWA10200, TVA10205, TVA10205(J), TVA10206, TVA11210, TVA11210(J), TVA11212, TVA.R8.0
INA08061	D806R Standard Reverse Insert	37.22	1.29 pt	610 mL	21.00	10.50	2.25	100	TND10200, TR..K100, TWA10203, TWA10201, TWA10200, TVA10205, TVA10205(J), TVA10206, TVA11210, TVA11210(J), TVA11212, TVA.R8.0
INA08090	D 809 Standard Insert	32.34	1.12 pt	529 mL	21.00	10.50	2.25	100	TND10200, TR..K100, TWA10203, TWA10201, TWA10200, TVA10205, TVA10205(J), TVA10206, TVA11210, TVA11210(J), TVA11212, TVA.R8.0
IJA18010	U 1801 Deep Traditional Insert	23.30	13.00 fl oz	383 mL	21.00	10.50	2.25	100	TND10200, TR..K100, TWA10203, TWA10201, TWA10200, TVA10205, TVA10205(J), TVA10206
INA08120	812 Traditional Insert	31.30	1.08 pt	512 mL	21.00	10.25	2.25	100	TND10200, TR..K100, TWA10203, TWA10201, TWA10200, TVA10205, TVA10205(J), TVA10206, TVA11210, TVA11210(J), TVA11212, TVA.R8.0
INA10010	1001 Traditional Insert	36.10	1.26 pt	596 mL	21.00	10.50	2.25	100	TND10200, TR..K100, TWA10203, TWA10201, TWA10200, TVA10205, TVA10205(J), TVA10206, TVA11210, TVA11210(J), TVA11212
INA10040	1004 Traditional Insert	31.80	1.10 pt	521 mL	21.00	10.50	2.25	100	TND10200, TR..K100, TWA10203, TWA10201, TWA10200, TVA10205, TVA10205(J), TVA10206, TVA11210, TVA11210(J), TVA11212
INA10060	1006 Traditional Insert	28.40	15.68 fl oz	463 mL	21.00	10.50	2.25	100	TND10200, TR..K100, TWA10203, TWA10201, TWA10200, TVA10205, TVA10205(J), TVA10206, TVA11210, TVA11210(J), TVA11212
INA12010	D1201 Standard Insert	29.90	1.04 pt	489 mL	21.00	10.50	2.25	100	TND10200, TR..K100, TWA10203, TWA10201, TWA10200, TVA10205, TVA10205(J), TVA10206, TVA11210, TVA11210(J), TVA11212, TVA.R6.0
INA12020	D1202 Standard Insert	29.29	1.01 pt	479 mL	21.00	10.50	2.25	100	TND10200, TR..K100, TWA10203, TWA10201, TWA10200, TVA10205, TVA10205(J), TVA10206, TVA11210, TVA11210(J), TVA11212, TVA.R6.0
INA12030	D1203 Standard Insert	25.02	13.80 fl oz	410 mL	21.00	10.50	2.25	100	TND10200, TR..K100, TWA10203, TWA10201, TWA10200, TVA10205, TVA10205(J), TVA10206, TVA11210, TVA11210(J), TVA11212, TVA.R6.0
INA12040	D1204 Standard Insert	21.36	11.83 fl oz	350 mL	21.00	10.50	2.25	100	TND10200, TR..K100, TWA10203, TWA10201, TWA10200, TVA10205, TVA10205(J), TVA10206, TVA11210, TVA11210(J), TVA11212, TVA.R6.0
INA12060	D1206 Standard Insert	21.36	11.80 fl oz	350 mL	21.00	10.50	2.25	100	TND10200, TR..K100, TWA10203, TWA10201, TWA10200, TVA10205, TVA10205(J), TVA10206, TVA11210, TVA11210(J), TVA11212, TVA.R6.0
INA18010	D1801 Standard Insert	17.70	9.81 fl oz	290 mL	21.00	10.50	2.25	100	TND10200, TR..K100, TWA10203, TWA10201, TWA10200, TVA10205, TVA10205(J), TVA10206, TVA11210, TVA11210(J), TVA11212
INA18040	1804 Traditional Insert	14.30	7.91 fl oz	234 mL	21.00	10.50	2.25	100	TND10200, TR..K100, TWA10203, TWA10201, TWA10200, TVA10205, TVA10205(J), TVA10206, TVA11210, TVA11210(J), TVA11212, TVA.R8.0
INA24010	2401 Traditional Insert	12.70	7.00 fl oz	208 mL	21.00	10.50	2.25	100	TND10200, TR..K100, TWA10203, TWA10201, TWA10200, TVA10205, TVA10205(J), TVA10206, TVA11210, TVA11210(J), TVA11212

U = Uncut

True Series Inserts



Part Code	Product Description	Cubic Inch Capacity	Max Liquid Volume		Outside Dimensions in Inches			Case	Compatible Tray
			US	Metric	Length	Width	Height		
IJT03060	True 306 Basket Pack Insert	128.15	2.21 qt	2.10 L	10.00	6.75	3.50	300	TVT.R3.0, TVT10201, TVT10203, TTD10200, TWT10201, TWT10200, THT10200, TCS12330
IJT03065	306 Deep Continuous Insert	141.72	2.45 qt	2.32 L	20.00	10.00	3.25	100	TVT10201, TVT10203, TTD10200, TWT10201, TWT10200, THT10200
IJT03090	309 Deep Continuous Insert	107.00	1.85 qt	1.75 L	20.00	10.00	3.00	100	TVT10201, TVT10203, TTD10200, TWT10201, TWT10200, THT10200
INT04120	True Quarter Pack (4.00 x 12.00) Continuous Insert	61.40	1.06 qt	1.01 L	20.00	10.00	2.75	80	TVT10201, TVT10203, TTD10200, TWT10201, TWT10200, THT10200
INM04060	406 Basket Pack	73.38	1.27 qt	1.2 L	8.00	5.00	3.87	400	TVH.1201
INM12011	1201 Basket Pack		2.54 qt	2.40 L	7.50	10.00	3.94	200	TVH.1201
IJT06060	True 606 Jumbo Insert	68.96	1.19 qt	1.13 L	20.00	10.00	3.25	100	TVT10201, TVT10203, TVT.R6.1, TTD10200, TWT10201, TWT10200, THT10200, TWT.R6.0
IJT06065	606 Deep Continuous Insert	53.80	1.864 pt	881 mL	20.00	10.00	3.25	100	TVT10201, TVT10203, TVT.R6.1, TTD10200, TWT10201, TWT10200, THT10200, TWT.R6.0
INT08040	T804 True Insert	37.83	1.31 pt	620 mL	20.00	10.00	2.50	100	TVT10201, TVT10203, TTD10200, TWT10201, TWT10200, THT10200, TVT.R8.1
INT08060	T806 True Insert	33.56	1.16 pt	550 mL	20.00	10.00	2.50	100	TVT10201, TVT10203, TTD10200, TWT10201, TWT10200, THT10200, TVT.R8.1
INT08061	T806 True Insert (Reverse)	33.56	1.16 pt	550 mL	20.00	10.00	2.50	100	TVT10201, TVT10203, TTD10200, TWT10201, TWT10200, THT10200, TVT.R8.1
INT10065	10.00 x 20.00 60 Cell Insert	47.50	1.65 pt	778 mL	20.00	10.00	3.75	100	TVT10060, TWT.R100
INT12010	T1201 True Insert	30.51	1.06 pt	550 mL	20.00	10.00	2.50	100	TVT10201, TVT10203, TTD10200, TWT10201, TWT10200, THT10200, TVT.R120
INT12030	T1203 True Insert	27.46	15.20 fl oz	450 mL	20.00	10.00	2.50	100	TVT10201, TVT10203, TTD10200, TWT10201, TWT10200, THT10200, TVT.R120
INT12031	T1203 True Insert (Reverse)	21.97	12.10 fl oz	360 mL	20.00	10.00	2.50	100	TVT10201, TVT10203, TTD10200, TWT10201, TWT10200, THT10200, TVT.R120
INT12040	T1204 True Insert	24.41	13.50 fl oz	400 mL	20.00	10.00	2.50	100	TVT10201, TVT10203, TTD10200, TWT10201, TWT10200, THT10200, TVT.R120
INT12045	1204 True Continuous Insert	21.10	11.70 fl oz	345 mL	20.00	10.00	2.75	100	TVT10201, TVT10203, TTD10200, TWT10201, TWT10200, THT10200, TVT.R120
INT12060	T1206 True Insert	21.36	11.80 fl oz	350 mL	20.00	10.00	2.50	100	TVT10201, TVT10203, TTD10200, TWT10201, TWT10200, THT10200, TVT.R120

True Series Flats & Trays



TVH.4060

TVT.R3.0

TVT10201

TVT10203

TVT.R6.1



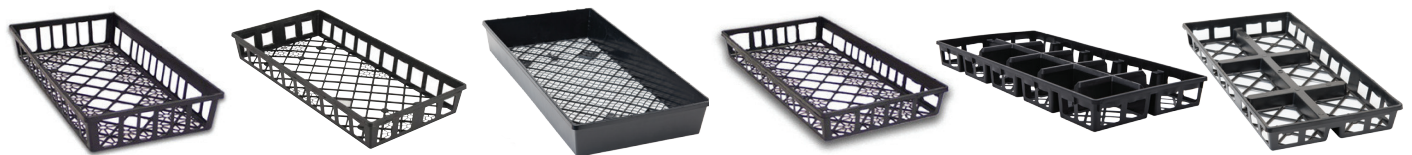
TVT.R8.1

TVT10060

TVT.R120

TVT.R125

Part Code	Product Description	Dimensions in Inches			Case	Bulk
		Length	Width	Height		
TVH.4060	8.00 x 20.00 Vacuum Tray	19.75	7.50	1.81	100	4200
TVT.R3.0	R3 1020 True Vacuum Full Depth Flat	20.00	10.00	2.00	100	3600
TVT10201	1020 True Vacuum Flat	20.00	10.00	2.62	100	3600
TVT10203	1020R True Vacuum Flat	20.00	10.00	2.62	100	
TVT.R6.1	R6 1020 True Vacuum Full Depth Flat	20.00	10.00	2.62	100	3600
TVT.R8.1	R8 1020 True Vacuum Full Depth Flat	20.00	10.00	2.62	100	3600
TVT10060	10.00 x 20.00 Vacuum Tray	20.00	10.00	2.00	3600	3600
TVT.R120	R12 1020 True Vacuum Full Depth Flat	20.00	10.00	2.62	100	3600
TVT.R125	True R12 Tray	20.00	10.00	2.87	100	



TTD10200

TWT10201

TWT10200

THT10200

TWT.R100

TWT.R6.0

Part Code	Product Description	Dimensions in Inches			Case
		Length	Width	Height	
TTD10200	1020 True Daisy Tray W/SKT	20.00	10.00	2.75	50
TWT10201	1020 True Lightweight Flat	20.00	10.00	2.50	50
TWT10200	1020 True Medium Weight Flat	20.00	10.00	2.50	50
THT10200	1020 True Heavy Tray	20.00	10.00	2.50	25
TWT.R100	1006I True Flat	20.00	10.00	2.00	25
TWT.R6.0	1020 R6 True Flat	20.00	10.00	2.00	50

Slim-Narrow Inserts



IJS06060



IJS06065



IJS08060



INS12045



IJS12040



IJS02240

Part Code	Product Description	Cubic Inch Capacity	Max Liquid Volume		Outside Dimensions in Inches			Case	Bulk	Compatible Tray
			US	Metric	Length	Width	Height			
IJS06060	606 Slim Jim Short Jumbo Insert	53.70	1.86 pt	879 mL	20.00	8.50	3.12	100	6600	TVS.R120, TVS.R6.0, TVS.R8.0, TVS85200, TWS.R6.1
IJS06065	606 Deep Continuous Insert	44.40	1.52 pt	729 mL	20.00	8.50	3.25	180	8800	TVS.R120, TVS.R6.0, TVS.R8.0, TVS85200, TWS.R6.1
IJS08060	806 Slim Jim Jumbo Short Insert	39.06	1.35 pt	640 mL	80.00	8.50	3.25	100	4000	TVS.R120, TVS.R6.0, TVS.R8.0, TVS85200
INS12045	1204 Insert	18.44	9.92 fl oz	302 mL	20.00	8.50	2.75	200		TVS85200
IJS12040	1204 Slim Jim Jumbo Short Insert	25.02	13.80 fl oz	410 mL	80.00	8.50	3.12	100	8800	TVS.R120, TVS.R6.0, TVS.R8.0, TVS85200
IJS02240	224 Slim Jim Half Pack Insert	119	2.06 qt	1.95 L	20.00	8.50	3.00	100		TWS.R6.1

Slim Trays



TVS85200



TVS.R6.0



TVS.R8.0



TVY.R6.0



TVS.R6.5

Part Code	Product Description	Dimensions in Inches			Case	Bulk
		Length	Width	Height		
TVS85200	8520 Slim Jim Vacuum Flat	20.00	8.50	2.50	100	4400
TVS.R6.0	R6 8520 Slim Jim Vacuum Flat	20.00	8.50	2.50	100	4400
TVS.R8.0	R8 8520 Slim Jim Vacuum Flat	20.00	8.50	2.50	100	4400
TVY.R6.0	R6 Rib Continuous Tray	21.00	8.50	2.75	50	
TVS.R6.5	Narrow R6 Tray	20.00	8.50	3.00	100	

Injection Flats



TWS.R6.1

TWS85206

TRH85200

Part Code	Product Description	Dimensions in Inches			Case	Bulk
		Length	Width	Height		
TWS.R6.12	8520 R6 Short Slim Jim Flat With Ribs	20.00	8.18	2.00	50	4000
TWS85206	Ribbed Continuous Print Tray	19.75	8.25	2.00	50	
TRH85200	8.50 x 20.00 Heavy Web Print Tray	19.37	8.25	2.37	50	

Skinny Minnie Insert & Tray



IJM03061

TVM.R3.0

IJM01180

IJM06060

TWM.R6.0

Part Code	Product Description	Dimensions in Inches			Case	Bulk
		Length	Width	Height		
IJM03063	WM 306 Skinny Minnie Basket Pack	8.00	6.50	3.25	300	10,500
TVM.R3.0	WM R3 Skinny Minnie Vacuum Flat	8.00	20.00	2.00	100	4400
IJM01180	118 Skinny Minnie Pack	8.00	20.00	2.00	100	4400
IJM06060	606 Skinny Minnie Jumbo Insert	8.00	20.00	1.80	100	7200
TWM.R6.0	R6 Skinny Minnie Vacuum Flat	8.00	20.00	2.00	100	4100

Super Thin Insert & Tray



IJL06060

TWL75200

Slim Jim Insert & Tray

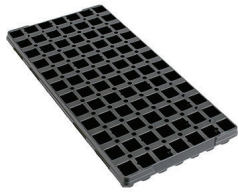


IJY06060

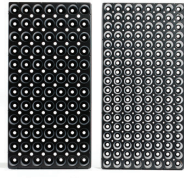
TWS.R6.0

Part Code	Product Description	Dimensions in Inches			Case	Bulk
		Length	Width	Height		
Standard & Traditional Flats & Trays						
IJL06060	606 Super Thin Jumbo Insert	20.00	7.50	3.50	100	7200
TWL75201	WM 7520R Super Thin Flat	20.00	7.50	2.00	100	3640
Standard & Traditional Flats & Trays						
IJY06060	606 Slim Jim Long Insert	21.00	8.50	3.12	100	5500
TWS.R6.0	8520 R6 Long Slim Jim Flat With Ribs	21.00	8.25	2.00	50	4000

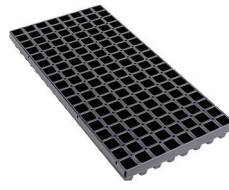
Vacuum Formed Plug Trays



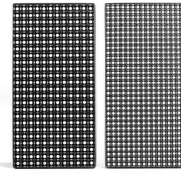
PGT084S0



PGT144R0



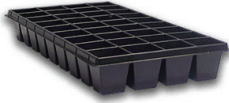
PGT144S0



PGT288S0



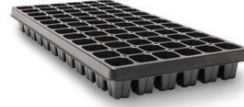
PLS20RW0



PLG036S0



PLU050S0



PLU072S0



PLU098S0



PGA102H0



PGA105H0



PGA128R0



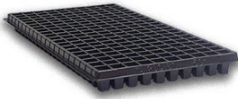
PGA128S0



PLU128S0



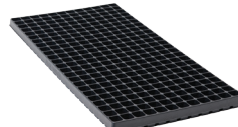
PLU162S0



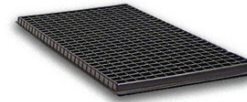
PLG200S0



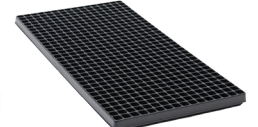
PLG200S2



PGA288C0



PLG392S0



PGA512C0

Part Code	Product Description	Dimensions in Inches			Case
		Length	Width	Height	
True					
PGT084S0	84 Square True Vacuum Plug Tray	20.00	10.00	1.75	50
PGT144R0	144 Round True Vacuum Plug Tray	20.00	10.00	1.63	50
PGT144S0	144 Square True Vacuum Plug Tray	20.00	10.00	1.63	50
PGT288S0	288 Square True Vacuum Plug Tray	20.00	10.00	1.13	50
Standard/Traditional					
PLS20RW0	20 Row Seed Flat	21.50	11.00	1.25	50
PLG036S0	36 Square Plug Tray	21.50	11.00	2.75	100
PLU050S0	50 TLC Ultra Series Square Plug Tray	21.50	11.00	2.38	100
PLU072S0	72 TLC Ultra Series Square Plug Tray	21.00	11.00	2.25	100
PLU098S0	98 TLC Ultra Series Square Plug Tray	21.50	11.00	2.00	100
PGA102H0	102 Hexagon Standard Vacuum Strip Plug Tray	21.00	10.50	1.69	50
PGA105H0	105 Heavy Duty Hexagon Standard Vacuum Strip Plug Tray	20.75	10.25	1.75	50
PGA128R0	128 Round Cell Standard Vacuum Plug Tray	10.37	10.25	1.25	50
PGA128S0	128 Square Cell Standard Vacuum Plug Tray	20.37	10.25	1.56	50
PLU128S0	128 TLC Ultra Series Square Plug Tray	21.50	11.00	2.00	100
PLU162S0	162 TLC Ultra Series Square Plug Tray	21.50	11.00	1.75	100
PLG200S0	200 Square Plug Tray	21.50	11.00	1.50	100
PLG200S2	200 Square, Deep 2.00 Plug Tray	21.50	11.00	2.00	100
PGA288C0	288 Common Element Standard Vacuum Plug Tray	20.50	10.25	1.06	50
PLG392S0	392 Square Plug Tray	21.50	11.00	1.13	100
PGA512C0	512 Common Element Standard Vacuum Plug Tray	20.50	10.25	0.87	50

Propagation Sheets



PRO024R0



PRO038R0



PRO040R0



PRO050R5



PRO060S0



PRO072R0



PRO098R0



PRO060P0



PRO072P0



PRO20100



PRO075P0

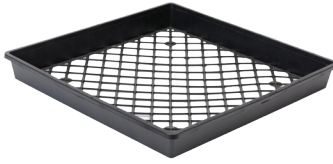


PRO21110

Part Code	Product Description	Dimensions in Inches			Case
		Length	Width	Height	
PRO024R0	DPS24 Propagation Sheet	20.75	10.31	2.38	100
PRO038R0	DPS38 Propagation Sheet	20.75	10.31	2.38	100
PRO040R0	DPS40 Propagation Sheet	20.75	10.31	2.38	100
PRO050R0	DPS50 Propagation Sheet (Round Cell)	20.75	10.31	2.38	100
PRO050R5	TLC 50 Pro-Tray	21.00	10.31	2.31	100
PRO060S0	60 Propagation Sheet (Square Cell)	20.75	10.31	2.75	100
PRO072R0	72 Propagation Sheet (Round Cell)	20.75	10.31	2.38	100
PRO098R0	DPS98 Propagation Sheet	20.75	10.31	1.56	100
PRO060P0	DPS60 Propagation Strip (Square Cell)	20.00	10.00	3.00	75
PRO072P0	DPS72 Propagation Strip (Square Cell)	20.00	10.00	2.13	75
PRO20100	72 Propagation Flat	20.00	10.00	1.94	75
PRO075P0	75 Propagation Strip (Square Cell)	20.00	9.37	1.75	50
PRO21110	102 Propagation Flat	21.50	10.50	1.38	50



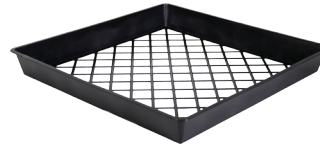
Nursery Flats and Trays



NIT60000



NIT60002



NIT60005

Part Code	Product Description	Dimensions in Inches			Bulk Pallet
		Length	Width	Height	
NIT60000	17.00 x 17.00 Medium Weight Mesh Flat	16.87	16.87	2.00	1000
NIT60001	17.00 x 17.00 M Prop Flat	16.88	16.87	2.00	1875
NIT60002	6 Pocket 1 Gallon Tray	19.75	13.00	2.50	3150
NIT60005	17.00 x 17.00 Lightweight Mesh Flat	17.00	17.00	2.00	4950
NTT60000	1.00 Quart 12 Pot Carry Tray	16.00	20.50	2.00	1000


Pot in Pot Spacers



NIS010G0



NIS70001

Part Code	Product Description	Dimensions in Inches		Bulk Pallet
		Width	Height	
NIS010G0	10.00 G Squat Pot N Pot SPCR	12.00	3.25	1920
 NIS70001	10/15 G Squat Pot N Pot SPCR	13.62	2.37	1080

Injection Molded Plug Trays



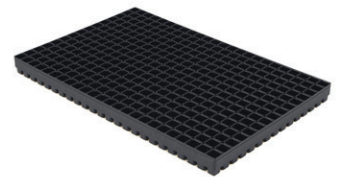
PIA072S0



PIA288C0



PIA512C0



PIP03600

Part Code	Product Description	Dimensions in Inches			Case
		Length	Width	Height	
PIA072S0	72 Count Standard Injection Plug Tray (Endless or Ventilated)	20.37	10.25	1.75	29
PIA288C0	288 Count Standard Injection Common Element Tray (Endless)	20.37	10.25	1.00	38
PIA512C0	512 Count Standard Injection Common Element Tray (Endless)	20.37	10.25	0.87	31
PIP03600	360 Cell Common Element Plug Tray	19.87	13.00	1.37	18