



# Landscape Trays, Sheets of Pots & Market Packs

- Create a cost-efficient system from growing to retail
- Custom colors or co-extruded versions are available; call for details
- Smooth finish ideal for label adhesion
- Sheet of pots are an economic alternative to single pots



# Sheet of Pots



**INP32WP1**



**INP18010**



**INP18011**



**INP18350**



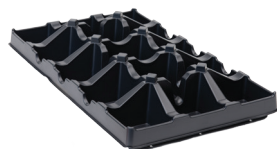
**INP15400**



**INP45150**

Part Code	Product Description	Dimension in Inches			Max Liquid Volume		Case Pack	Tray Compatibility
		Length	Width	Height	US	Metric		
INP18010	1801 Standard Perennial Sheet	21.00	10.50	3.50	14.5 fl oz	429 mL	100	TCS18401
INP18011	U 1801 Standard Perennial Sheet Uncut	21.00	10.50	3.50	14.5 fl oz	429 mL	100	TCS18401
INP18350	Kord 18 Count Presto Pot 3.50 Square	20.50	10.50	3.50	15.55 fl oz	458 mL	100	TKP18350
INP15400	Kord 15 Count Presto Pot 4.00 Square	20.00	12.00	4.00	1.42 pt	671 mL	50	TRK15400
INP15450	Kord 15 Count Presto Pot 4.50 Square	21.00	12.65	4.25	1.62 pt	753 mL	50	TRK15450
INP45150	1501 Deep Perennial Sheet	20.75	12.50	4.75	1.75 pt	830 mL	50	TCS15450

U = Uncut



**TCS15450**



**TCS18401**



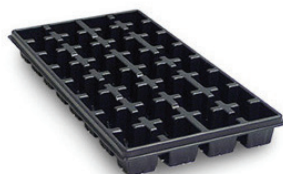
**TKP18350**



**TRK15400**



**TRK15450**



**TRV32250**

Part Code	Product Description	Dimensions in Inches			Case
		Length	Width	Height	
TCS15450	15 Pocket Square Carry Tray For 4.50 Pot	20.63	12.50	3.50	50
TCS18401	U 18 Pocket Square Carry Tray For 4.00 Pot (Press Fit)	21.25	10.63	2.38	50
TKP18350	Kord 18 Pocket Tray For 3.50 Pot	20.50	10.50	2.25	50
TRK15400	K Kord 15 Pocket Tray For 4.00 Pot	20.25	12.25	2.00	50
TRK15450	Kord 15 Pocket Tray For 4.50 Pot	21.25	12.75	2.00	50
TRV32250	TLC 32 Pocket Tray	21.50	11.00	2.13	50

K = Heavy Thick Wall Version Available | U = Uncut



# Sheet of Pots



INP18012



INP45100



INP45101

Part Code	Product Description	Dimensions in Inches			Max Liquid Volume		Case Pack	Tray Compatibility
		Length	Width	Height	US	Metric		
INP18012	1801 True Perennial Sheet	20.00	10.00	3.50	13.50 fl oz	400 mL	100	TVT.P180 TRT184T0
INP45100	4510 Annual Sheet	21.65	8.25	4.00	1.37 pt	650 mL	50	
INP45101	4510 Perennial Sheet With Tag Locator	20.75	8.25	5.00	1.67 pt	790 mL	50	TCS10450



TVT.P180



IJT18010



TRT184T0



TCS10450

Part Code	Product Description	Dimensions in Inches			Case
		Length	Width	Height	
TVT.P180	P18 1020 True Vacuum Flat	20.00	10.00	2.00	100
IJT18010	1801 Deep Insert	20.00	10.00	3.13	100
TRT184T0	18 Pocket Tray	20.00	10.00	2.25	50
TCS10450	10 Pocket Square Carry Tray For 4.50 Pot (Short Ribbed)	21.00	8.50	3.00	50



TWT.R1.0

Part Code	Product Description	Dimensions in Inches			Case	Bulk Qty
		Length	Width	Height		
TWT.R1.0	1020 R1 True Flat	20.00	10.00	2.88	50	900
TVM.R201	WM R2 GC Skinny Minnie Vacuum Flat	20.00	8.00	2.00	100	4400



# Specialty Products, Handles & Landscape Flats



**SPH13CH0**



**SPH18HA0**



**SPH2DPC0**



**SPH3DPC0**



**SPHBCHD0**



**SPHWPLA2**

Part Code	Product Description	Length	Case
SPH13CH0	13.00 Landscape Carrying Handle	13.27	1000
SPH18HA0	18.00 Decorator Carrying Handle	18.00	2000
SPH2DPC0	Utility Handle #2 DPC 16.25	16.25	1000
SPH3DPC0	Utility Handle #3 DPC 20.00	20.00	1000
SPHBCHD0	Basket Pack Clip Handle	21.50	1000
SPHWPLA2	19.00 Clip handle	19.36	1800



**TRV12010**



**TR.18010**



**TRT18010**

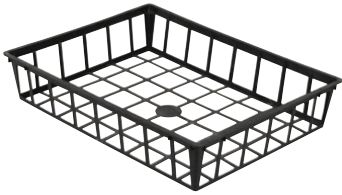


**TRV24010**

Landscape Flats	Product Description	Height		Max Liquid Volume		Case Pack	Bulk Qty
		Inches	cm	US	Metric		
TRV12010	12 Pocket Landscape Thermoformed Tray	3.25	8.25	13.10 fl oz	388 mL	85	5355
TR.18010	18 Pocket Landscape Trade Thermoformed Tray	3.50	8.89	12.48 fl oz	370 mL	50	
TRT18010	18 Pocket Landscape True Thermoformed Tray (PP)	3.50	8.89	10.40 fl oz	308 mL	50	
TRV24010	24 Pocket Landscape Thermoformed Tray	3.25	8.25	5.67 fl oz	170 mL	85	5355



# Nursery Flats & Carryall Trays



TIA04500



TIA06500



TIA10000



TIU12190



TWN12160



TWN13170



TWN13171

Part Code	Product Description	Dimensions in Inches			Case	Bulk
		Length	Width	Height		
TIA04500	4.50 Carryall Pot	17.25	13.00	3.00	25	1425
TIA06500	6.50 Carryall Pot	19.12	12.63	3.00	25	1540
TIA10000	10.00 Hanging Basket Tray	19.25	10.00	2.50	N/A	1800
TIU12190	Sunnyside Flat	19.37	12.00	2.88	25	
TWN12160	12.00 x 16.00 Nursery Flat	16.31	12.38	3.00	25	2300
TWN13170	13.00 x 17.00 Nursery Flat	17.25	13.06	3.31	25	
TWN13171	13.00 x 17.00 M Nursery Flat	17.12	12.94	3.00	25	



# Kord FiberGrow

- Biodegradable and compostable
- Manufactured with recycled materials in our North American closed loop water recycling facility
- A broad assortment of sizes, shapes and styles to choose from to differentiate your products



## FiberGrow Hanging Pots

- Hanging Pots provide season-long durability in moist and humid growing conditions
- WaxTough fortified Hanging Pots are an aesthetically pleasing, rich, dark, earth tone color
- FiberGrow insulates roots from extreme variations in temperature
- WaterSaver Hanging Pots feature a water reservoir that helps reduce watering cycles, assists with rehydration, and increases overall plant quality

## Hangers & Cages

- Upgrade to our HZSSL191 or HZSSL221 4-Strand Heavy Duty Swivel Hanger for our 14" WaxTough Hanging Pot with Grommets
- Hanging Cage Assemblies feature a heavy duty, clip-on swivel hanger
- Wire cages feature double welds for added strength and reliable, full support of our Hanging Pot
- Choose from our wire or plastic 4-strand hangers for our 8-12" hanging pots with grommets

## FiberGrow Pots, Pans & Patio Planters

- Superior growing containers that breathe like clay, improve aeration, and promote healthier root systems by insulating them from temperature fluctuations
- Select sizes available in WaxTough, for additional WaxTough sizes contact your HC Companies Sales Representative for details
- Choose from wire or plastic 4-strand hangers for our 8-12" WaxTough hanging pots with grommets



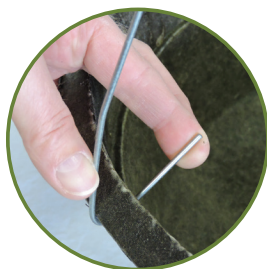
## FiberGrow Garden Paks & Garden Pak Strips

- FiberGrow Garden Pak Strips are natural, biodegradable inserts ideal for bedding plants and vegetables
- Automation friendly when used with compatible HC flats and carry trays
- FiberGrow Garden Paks promote healthy root development for optimal plant growth
- Easy de-nesting with no sharp corners

## Coconut Coir

- Ability to be planted directly into the ground
- Stops transplant shock
- Improved air flow, for healthier, stronger root growth
- Marketing opportunities available, ask your sales representative about branding opportunities

## How to Secure Your HD Swivel Hangers







## Bring your plants full circle with an eco-friendly solution

- Manufactured with the environment in mind in our North American, closed loop water recycling production facility
- Automation friendly carry trays available for all sizes
- Built-in denesting lugs for ease of handling
- EcoGrow pots hold up for retailers, yet compost quickly when planted in the ground
- An ideal choice for vegetables, herbs, and more!



"In today's market where eco-friendly is a significant selling point, EcoGrow meets all of our production requirements; they perform for the duration of the crop cycle. Our retail customers like the 'straight from the farm' look EcoGrow provides, making them aesthetically appealing and preferred by their customers. At Martin Farms we are continually reviewing our business to maintain the best environment stewardship possible and we believe EcoGrow pots are another positive step in this direction."

– **Bob Martin**, Martin Farms Ltd.

Martin Farms Ltd. is the source for quality garden ready vegetables in Ontario. They offer a full assortment of top selling tomatoes and peppers from old time favorites to hot new hybrids. Bob Martin's 'The Veggie Guy' line of vegetables is grown exclusively in EcoGrow pots.



Sustainable! FiberGrow products are made from recycled materials and are completely **COMPOSTABLE** and **BIODEGRADABLE**





**FRS03500**



**FRS03750**



**FRS04000**



**FRS04250**

3.00"

Diameter Range

4.25"



**FRS04500**



**FRA05000**



**FRS05000**



**FRA06000**

4.50"

Diameter Range

6.00"

Part Code	Product Description	Outside Diameter		Height		Max Liquid Volume		Case Pack	Bulk Qty	Tray Compatibility
		Inches	cm	Inches	cm	US	Metric			
FRS03500	3.50 STD EcoGrow Round Pot	3.50	8.89	3.25	8.25	9.30 oz	275 mL	720	16,200	TCR12350
FRS03750	3.75 STD EcoGrow Round Pot	3.88	9.85	3.38	8.58	12.40 oz	0.30 L	625	10,890	FCT10400
FRS04000	4.00 STD EcoGrow Round Pot	4.00	10.16	3.50	8.89	14.40 oz	0.42 L	625	13,860	TCR10406
FRS04250	4.25 EcoGrow Round Pot	4.25	10.80	3.62	9.21	1.13 pt	0.53 L	500	9504	TCG10430
FRS04500	4.50 GER EcoGrow Round Pot	4.50	11.43	3.75	9.52	1.27 pt	0.60 L	322	6600	TRS10450
FRA05000	5.00 AZ EcoGrow Round Pot	5.00	12.70	3.62	9.19	1.48 pt	0.70 L	336	7144	TCA08500
FRS05000	5.00 STD EcoGrow Round Pot	5.00	12.70	4.75	12.06	1.92 pt	0.90 L	272	5440	TRS08510
FRA06000	6.00 AZ EcoGrow Round Pot	6.00	15.24	4.25	10.79	1.32 qt	0.62 L	156	3640	TCA06600

## Creating the Gardener's Choice!



Simply peel the bottom off the EcoGrow Pot



Position the plant in the hole & tuck bottom in beside it



Fill in the hole and watch your garden grow!



# WaxTough FiberGrow Hanging Pots with Grommets



**FHB0800WAX(GR)**



**FHB1000WAX(GR)**



**FHB10XLWAX(GR)**



**FHB1200WAX(GR)**



**FHB12XLWAX(GR)**

8.00"

← Diameter Range →

12.00"

Part Code	Product Description	Dimensions in Inches			Capacity Cubic Inches	Volume		Unit of Measure	Quantity Per Bundle	Full Pallet	Bundles Per Pallet
		Outside Diameter	Inside Diameter	Height		US	Metric				
<b>Hanging Pots 8" - 12"</b>											
FHB0800WAX(GR)	8.00 WaxTough Hanging Pot W/G	8.50	7.50	6.00	239	1.03 gal	3.91 L	BDL	24	1200	50
FHB1000WAX(GR)	10.00 WaxTough Hanging Pot W/G	11.00	10.00	6.00	379	1.64 gal	6.21 L	BDL	24	1152	48*
FHB10XLWAX(GR)	10.00 WaxTough XL Hanging Pot Deep W/G	11.00	10.00	7.75	380	1.65 gal	6.25 L	BDL	24	1152	48
FHB1200WAX(GR)	12.00 WaxTough Hanging Pot W/G	12.50	11.63	7.00	491	2.12 gal	8.04 L	BDL	12	936	78*
FHB12XLWAX(GR)	12.00 Wax Tough XL Hanging Pot Deep W/G	13.00	12.00	9.00	631	2.73 gal	10.30 L	BDL	12	780	65



**FHE1000WAX(GR)**



**FHE12XLWAX(GR)**

10.00"

← Diameter Range →

12.00"

Part Code	Product Description	Dimensions in Inches			Capacity Cubic Inches	Volume		Unit of Measure	Quantity Per Bundle	Full Pallet	Bundles Per Pallet
		Outside Diameter	Inside Diameter	Height		US	Metric				
<b>Beehive Hanging Pots 10" - 12"</b>											
FHE1000WAX(GR)	10.00 WaxTough Beehive Hanging Pot W/G	10.00	9.00	6.00	298	1.64 gal	6.20 L	BDL	12	1152	48
FHE1200WAX(GR)	12.00 WaxTough Beehive Hanging Pot W/G	12.00	11.00	6.00	431	1.87 gal	7.08 L	BDL	12	864	72
FHE12XLWAX(GR)	12.00 Wax Tough Beehive Hanging Pot W/G	13.00	12.00	7.75	587	2.54 gal	9.61 L	BDL	12	624	52*



**FHR1200WAX(GR)**



**FHO1300WAX(GR)**

12.00"

← Diameter Range →

13.00"

Part Code	Product Description	Dimensions in Inches			Capacity Cubic Inches	Volume		Unit of Measure	Quantity Per Bundle	Full Pallet	Bundles Per Pallet
		Outside Diameter	Inside Diameter	Height		US	Metric				
<b>WaterSaver Hanging Pots 12" - 13"</b>											
FHR1200WAX(GR)	12.00 WaxTough WaterSaver Hanging Pot W/G	12.88	11.88	6.38	491	2.12 gal	8.04 L	BDL	12	936	78*
FHO1300WAX(GR)	13.00 WaxTough Octagonal WaterSaver Hanging Pot W/G	14.00	12.33	7.00	538	2.34 gal	8.81 L	BDL	12	936	54

\* Indicates product is also available in bulk | See page 81 for additional hanger info



# FiberGrow Hanging Pots with Grommets



FHS10000WAX(GR)



FHS12000WAX(GR)



FHS12500WAX(GR)



FHB10H00WAX(GR)



FHF12000WAX(GR)

10.00" <----- Diameter Range -----> 12.50"      11.00" <----- Diameter Range -----> 12.50"

Part Code	Product Description	Dimensions in Inches			Capacity Cubic Inches	Volume		Unit of Measure	Quantity Per Bundle	Full Pallet	Bundles Per Pallet
		Outside Diameter	Inside Diameter	Height		US	Metric				
<b>Square Hanging Pots 10" - 12.50"</b>											
FHS10000WAX(GR)	10.00 WaxTough Square Hanging Pot W/G	9.75	8.88	7.00	397	1.71 gal	6.47 L	BDL	24	768	32
FHS12000WAX(GR)	12.00 WaxTough Square Hanging Pot W/G	12.00	11.00	7.00	551	2.38 gal	9.01 L	BDL	12	1008	84
FHS12500WAX(GR)	12.50 WaxTough Square Hanging Pot W/G	13.25	12.00	7.25	643	2.79 gal	10.60 L	BDL	12	840	70
<b>Floral Hanging Pots 10" - 12.50"</b>											
FHB10H00WAX(GR)	10.00 WaxTough Strawberry Hanging Pot W/G	11.00	10.00	6.00	379	1.64 gal	6.21 L	BDL	12	1152	48
FHF12000WAX(GR)	12.00 WaxTough Floral Hanging Pot W/G	12.75	11.25	7.00	491	2.12 gal	8.04 L	BDL	12	576	48
FHS125H0WAX(GR)	12.50 WaxTough Square Floral Hanging Pot W/G	13.25	12.00	7.25	643	2.79 gal	10.60 L	BDL	12	810	70



FHE14000WAX(GR)



FHR14000WAX(GR)



FHT14000WAX(GR)

14.00" <----- Diameter Range -----> 14.00"

Part Code	Product Description	Dimensions in Inches			Capacity Cubic Inches	Volume		Unit of Measure	Quantity Per Bundle	Full Pallet	Bundles Per Pallet
		Outside Diameter	Inside Diameter	Height		US	Metric				
<b>Hanging Pots 14"</b>											
FHE14000WAX(GR)	14.00 WaxTough Beehive Hanging Pot W/G	14.25	12.87	8.75	793	3.43 gal	13.00 L	BDL	6	378	63
FHR14000WAX(GR)	14.00 WaxTough WaterSaver Hanging Pot W/G	15.50	14.00	9.00	1064	4.61 gal	17.40 L	BDL	6	324	54
FHT14000WAX(GR)	14.00 WaxTough Retro Hanging Pot W/G	15.00	13.50	10.75	1116	4.83 gal	18.29 L	BDL	6	432	72



HZP4LFG0  
20.00"



FHZSL4W0



HZP4LFG6



FHZSEZWS

20.00" <----- Diameter Range -----> 23.00"

Part Code	Product Description	Length	Quantity Per Bag	Bags Per Case	Quantity Per Case
<b>Hangers for 8" - 12" Hanging Pots with Grommets</b>					
HZP4LFG0	4 Strand Plastic FiberGrow Hanger Black	20.00	24	20	480
FHZSL4W0	4 Wire Long Hanger	22.25	32	15	480
HZP4LFG6	4 Strand FiberGrow Hanger Brown w/ Tag Bar	20.00	24	20	480
FHZSEZWS	4 Strand EZ Wire HD Hanger	20.00	24	10	240
FHZSEZWL		24.00	12	8	240
<b>Hangers for 14" Hanging Pots with Grommets</b>					
HZSSL191		19.00	12	8	96
HZSSL221	4 Strand Heavy Duty Swivel Wire Hanger	22.00	12	8	96
FHZSHD4W	4 Strand HD Wire Hanger	26.00	36	6	216



# FiberGrow Hanging Pots without Grommets



FHB12000



FHR14000



FHR14000WA1



FHR16000

12.00"

← Diameter Range →

16.00"



FHR16000WA1



FHR18000



FHR18000WA1

17.00"

← Diameter Range →

18.00"

Part Code	Product Description	Dimensions in Inches			Capacity Cubic Inches	Volume		Quantity Per Bundle	Full Pallet	Compatible Hanger
		Outside Diameter	Inside Diameter	Height		US	Metric			
<b>Hanging Pots 12" - 18"</b>										
FHB12000	12.00 FiberGrow Hanging Pot	12.50	11.63	7.00	491	2.12 gal	8.04 L	12	936	FHZSA120(CA)
FHR14000	14.00 FiberGrow WaterSaver Hanging Pot	15.50	14.00	9.00	1064	4.61 gal	17.40 L	6	324	FHZSA140(CA), FHZSA141(CA)
FHR14000WA1	14.00 WaxTough WaterSaver Hanging Pot	15.50	14.00	9.00	1064	4.61 gal	17.40 L	6	324	FHZSA140(CA), FHZSA141
FHR16000	16.00 FiberGrow WaterSaver Hanging Pot	17.13	16.13	10.00	1528	6.62 gal	25.10 L	6	216	FHZSA160(CA), FHZ161(CA)
FHR16000WA1	16.00 WaxTough WaterSaver Hanging Pot	17.13	16.13	10.00	1528	6.62 gal	25.10 L	6	216	FHZSA160(CA), FHZ161(CA)
FHR18000	18.00 FiberGrow WaterSaver Hanging Pot	19.00	18.00	9.75	1685	7.30 gal	27.60 L	6	240	FHZSA180(CA)
FHR18000WA1	18.00 WaxTough WaterSaver Hanging Pot	19.00	18.00	9.75	1685	7.30 gal	27.60 L	6	240	FHZSA180(CA)
<b>WA1 = Waxed on Outside Only</b>										



FHZSA120(CA)



FHZSA140(CA)



FHZSA160(CA)



FHZSA180(CA)



FHZA141



FHZ161

Part Code	Product Description	Length	Unit of Measure	Quantity Per Bag	Bags Per Case	Case Per Pallet
<b>Hanging Pots Assemblies for 12" - 18" Hanging Pots without Grommets</b>						
FHZSA120(CA)	12.00 Hanging Pot Assembly (Hoop & Wire)	20.00	CASE	30	1500	50
FHZSA140(CA)	14.00 Hanging Pot Assembly (Hoop & Wire)	22.00	CASE	36	864	24
FHZA141(CA)	14.00 Hanging Pot Assembly (Hoop & Wire)	19.00	CASE	36	864	24
FHZSA160(CA)	16.00 Hanging Pot Assembly (Hoop & Wire)	22.00	CASE	36	648	18
FHZ161(CA)	16.00 Hanging Pot Assembly (Hoop & Wire)	20.00	CASE	36	648	18
FHZSA180(CA)	18.00 Hanging Pot Assembly (Hoop & Wire)	24.00	CASE	36	504	14



# WaxTough FiberGrow Patio Planters



**FPP09090WA1**



**FPP12070WA1**

9.00"

← Diameter Range →

12.00"

Part Code	Product Description	Dimensions in Inches			Capacity in Cubic Inches	Volume		Unit of Measure	Quantity Per SLV-CS
		Outside Diameter	Inside Diameter	Height		US	Metric		
<b>WaxTough Square Patio Planters</b>									
FPP09090WA1	9.00 x 9.00 WaxTough Square Patio Planter	9.00	8.00	9.00	465	2.02 gal	7.63 L	SLV	40
FPP12070WA1	12.00 x 7.00 WaxTough Square Patio Planter	12.63	11.63	6.50	551	2.39 gal	9.02 L	SLV	32



**FPP10080WA1**



**FPP12100WA1**

10.00"

← Diameter Range →

12.00"

Part Code	Product Description	Dimensions in Inches			Capacity in Cubic Inches	Volume		Unit of Measure	Quantity Per SLV-CS
		Outside Diameter	Inside Diameter	Height		US	Metric		
<b>WaxTough Hexagon Patio Planters</b>									
FPP10080WA1	10.00 x 8.00 WaxTough Hexagon Patio Planter	10.00	9.00	8.00	379	1.64 gal	6.20 L	SLV	35
FPP12100WA1	12.00 x 10.00 WaxTough Hexagon Patio Planter	12.00	11.00	10.00	932	4.03 gal	15.30 L	SLV	20



**FPP15080WA1**



**FPP15120WA1**

15.00"

← Diameter Range →

15.00"

Part Code	Product Description	Dimensions in Inches			Capacity in Cubic Inches	Volume		Unit of Measure	Quantity Per SLV-CS
		Outside Diameter	Inside Diameter	Height		US	Metric		
<b>WaxTough Decagon Patio Planters</b>									
FPP15080WA1	15.00 x 8.00 WaxTough Decagon Patio Planter	15.00	14.00	8.00	1027	4.45 gal	16.90 L	SLV	20
FPP15120WA1	15.00 x 12.00 WaxTough Decagon Patio Planter	17.00	15.00	12.00	1466	6.35 gal	24.00 L	SLV	20

# FiberGrow Patio Planters



6.00" ← Diameter Range → 12.00"



12.00" ← Diameter Range → 18.00" 10.00" ← Diameter Range → 12.00"

Part Code	Product Description	Dimensions in Inches			Capacity Cubic Inches	Volume		Unit of Measure	Quantity Per SLV-CS	Quantity Per Bulk Skid
		Outside Diameter	Inside Diameter	Height		US	Metric			
<b>Square Patio Planters</b>										
FPP06060	6.00 x 6.00 FiberGrow Square Patio Planter	6.00	5.00	6.00	161	2.78 qt	2.63 L	SLV	60	
FPP09090	9.00 x 9.00 FiberGrow Square Patio Planter	9.00	8.00	9.00	465	2.02 gal	7.63 L	SLV	40	
FPP10070	10.00 x 7.00 FiberGrow Square Patio Planter	10.00	9.00	7.00	397	1.72 gal	6.51 L	SLV	32	
FPS11110	11.00 x 11.00 Square Patio Planter	13.00	12.00	11.50	977	4.23 gal	16.01 L	BDL	5	315
FPP12070	12.00 x 7.00 FiberGrow Square Patio Planter	12.63	11.63	6.50	551	2.39 gal	9.02 L	SLV	32	
<b>Round Shallow Patio Planters ("S" denotes serrated)</b>										
FPP10040	10.00 x 4.00 FiberGrow Round Shallow Patio Planter	10.00	9.00	4.00	191	3.31 qt	3.13 L	SLV	70	
FPP10040(S)	10.00 x 4.00 FiberGrow Round Shallow Patio Planter (Serrated)	10.00	9.00	4.00	192	3.31 qt	3.13 L	SLV	70	1710
FPP12050	12.00 x 5.00 FiberGrow Round Shallow Patio Planter	12.00	11.00	5.00	343	1.48 gal	5.62 L	SLV	60	
FPP15060	15.00 x 6.00 FiberGrow Round Shallow Patio Planter	15.00	14.00	6.00	736	3.19 gal	12.10 L	SLV	25	
FPP18080	18.00 x 8.00 FiberGrow Round Shallow Patio Planter	18.00	17.00	8.00	1340	5.80 gal	22.00 L	SLV	20	
<b>Hexagon Patio Planters</b>										
FPP10080	10.00 x 8.00 FiberGrow Hexagon Patio Planter	10.00	9.00	8.00	379	1.64 gal	6.20 L	SLV	35	
FPP12100	12.00 x 10.00 FiberGrow Hexagon Patio Planter	12.00	11.00	10.00	932	4.03 gal	15.30 L	SLV	20	



## FiberGrow Patio Planters (cont.)



Part Code	Product Description	Dimensions in Inches			Capacity Cubic Inches	Volume		Unit of Measure	Quantity Per SLV-CS	Quantity Per Bulk Skid
		Outside Diameter	Inside Diameter	Height		US	Metric			
<b>Decagon Patio Planters</b>										
FPP10050	10.00 x 5.00 FiberGrow Decagon Patio Planter	10.00	9.00	5.00	241	1.04 gal	3.95 L	SLV	50	
FPP12060	12.00 x 6.00 FiberGrow Decagon Patio Planter	12.00	11.00	6.00	436	1.89 gal	7.15 L	SLV	35	
FPP13070	13.00 x 7.00 FiberGrow WaterSaver Octagon Patio Planter	14.00	13.00	7.00	538	2.33 gal	8.82 L	SLV	32	
FPP15080	15.00 x 8.00 FiberGrow Decagon Patio Planter	15.00	14.00	8.00	1027	4.45 gal	16.90 L	SLV	20	
FPP15120	15.00 x 12.00 FiberGrow Decagon Patio Planter	16.50	15.00	12.00	1466	6.35 gal	24.00 L	SLV	20	
<b>Balcony Planters</b>										
FPP15050	15.00 x 6.00 FiberGrow Balcony Planter	15.00 x 6.00	14.00	4.88	233	1.00 gal	3.79 L	CASE	25	1152
FPP16060	16.00 x 6.00 FiberGrow Balcony Planter	16.00 x 7.50	15.00	5.50	584	2.53 gal	9.58 L	CASE	24	
FPP24060	24.00 x 6.00 FiberGrow Balcony Planter	24.00 x 6.00	23.00	5.75	823	3.56 gal	13.50 L	CASE	12	336
<b>Urn Liners</b>										
FLP12090	Robinson Liner	12.00	11.25	10.00	625	2.71 gal	10.25 L	SLV	20	

## FiberGrow Pots & Pans



Part Code	Product Description	Dimensions in Inches			Capacity Cubic Inches	Volume		Unit of Measure	Qty Per SLV-CS- BDL	Full Pallet Quantity	Cases/ SLVS Per Pallet
		Outside Diameter	Inside Diameter	Height		US	Metric				
<b>Square Pots</b>											
FSQT4040	4.00 FiberGrow Square Pot	4.25	3.50	3.50	35	1.40 pt	662 mL	CASE	400	13,200	33
FSQ04040	4.50 FiberGrow Square Pot	4.25	3.75	4.00	40	1.22 pt	577 mL	CASE	400	4000	10
FSQ05040	5.00 FiberGrow Square Pot	5.50	4.75	3.50	56	1.96 pt	927 mL	CASE	250	2000	8
<b>Round Pots</b>											
FRS03540	4.00 FiberGrow Standard Round Pot	4.00	3.50	3.50	26	14.40 fl oz	426 mL	CASE	500	10,000	20
FRS04040	4.50 FiberGrow Geranium Pot	4.75	4.00	3.75	32	1.28 pt	606 mL	CASE	400	8000	20
FR.05040	5.00 FiberGrow Azalea Pot	5.50	5.00	3.75	58	1.00 qt	946 mL	CASE	250	5000	20
FRA05050	5.00 FiberGrow Standard Round Pot	5.50	5.00	3.75	58	1.00 qt	946 mL	CASE	250	5000	20
FRA06050	6.00 FiberGrow Azalea Pot	5.75	5.00	5.50	96	1.67 qt	1.58 L	SLV	100		

# FiberGrow Pots & Pans (cont.)



FNP07060



FRP08050



FRP08550



FRP09060

8.00"



9.00"



FRP09060(TW)



FRP10050



FRP11060

10.50"



11.00"

Part Code	Product Description	Dimensions in Inches			Capacity Cubic Inches	Volume		Unit of Measure	Qty Per SLV	Quantity Per Bulk Skid
		Outside Diameter	Inside Diameter	Height		US	Metric			
<b>Round Pans</b>										
FNP07060	7.50 FiberGrow Round Pan	8.75	7.50	6.00	213	3.70 qt	3.50 L	SLV	70	
FRP08050	8.00 FiberGrow Round Pan	8.75	8.00	4.75	185	3.21 qt	3.04 L	SLV	50	1500
FRP08550	8.50 FiberGrow Round Mum Pan	9.00	8.75	5.25	246	1.05 gal	3.98 L	SLV	50	1200
FRP09060	9.00 FiberGrow Round Pan	10.50	9.25	6.50	398	1.75 gal	6.52 L	SLV	25	700
FRP09060	TW 9.00 FiberGrow Thin Wall Round Pan	10.50	9.50	6.50	398	1.75 gal	6.52 L	SLV	30	860
FRP10050	10.50 FiberGrow Round Pan	10.50	9.00	5.50	309	1.34 gal	5.06 L	SLV	30	
FRP11060	10.75 FiberGrow Round Pan	11.50	10.75	6.00	471	2.04 gal	7.72 L	SLV	30	
<b>TW = Thin Wall</b>										

# FiberGrow Garden Paks



FPK01280

FPK01350

FPK01361(D)

FPK01330

FPK01390

FPK01440

5.00"

← Diameter Range →

8.00"



FPK01480

FPK01570

FPK01800

FPK01600

FPK45300

FPK11200

FPK12160

8.00"

← Diameter Range →

17.00"

Part Code	Product Description	Dimensions in Inches			Capacity Cubic Inches	Volume		Unit of Measure	Qty Per SLV-CS-BDL	Full Pallet Quantity	Bundles Per Pallet	Qty Per Bulk Skid
		Outside Diameter	Inside Diameter	Height		US	Metric					
<b>Garden Paks</b>												
FPK01280	128 FiberGrow Garden Pak 5.50 x 5.00 x 2.75	5.50	5.00	2.75	47	1.62 pt	767 mL	CASE	500	8500	17	
FPK01350	135 FiberGrow Garden Pak 6.75 x 5.25 x 2.75	7.00	5.50	2.50	58	1.98 qt	938 mL	CASE	500	7500	15	
FPK01361	D 136D FiberGrow Garden Pak, 6.75 x 5.25 x 3.00	7.00	5.50	3.25	75	1.30 qt	1.23 L	CASE	300	4500	15	
FPK01330	133 FiberGrow Garden Pak 7.50 x 4.75 x 2.75	7.50	4.75	2.75	55	1.90 pt	900 mL	CASE	500	12,000	24	
FPK01390	139 FiberGrow Garden Pak 7.50 x 4.75 x 2.75	7.50	4.75	2.75	54	1.88 pt	890 mL	CASE	400	9600	24	
FPK01440	144 FiberGrow Garden Pak 7.50 x 5.50 x 2.75	7.75	5.75	2.75	78	1.35 qt	1.28 L	CASE	250	9000	36	
FPK01480	148 FiberGrow Garden Pak 8.00 x 6.25 x 3.00	8.00	6.25	3.00	94	1.63 qt	1.54 L	CASE	250	6000	24	
FPK01570	157 FiberGrow Garden Pak 8.50 x 6.75 x 2.75	8.50	4.75	2.75	54	1.90 qt	1.80 L	CASE	200	4800	24	
FPK01800	180 FiberGrow Garden Pak 10.00 x 8.25 x 3.25	10.00	8.50	3.00	94	2.74 qt	2.59 L	CASE	150	3750	25	
FPK01600	160 FiberGrow Garden Pak 10.25 x 6.25 x 3.00	10.25	6.25	3.00	78	2.16 qt	2.04 L	CASE	200	2800	14	
FPK11200	1120 FiberGrow Flat Garden Pak, 12.00 x 10.00 x 3.00	12.50	10.50	3.00	295	1.28 gal	4.85 L	CASE	100	2000	20	1000
FPK12160	1216 FiberGrow Flat Garden Pak, 17.00 x 12.00 x 2.75	18.50	12.00	2.75	478	2.07 gal	7.83 L	CASE	50	800	16	
FPK45300	4530 FiberGrow Peat Strip Tray, 10.25 x 7.00 x 3.25	10.25	7.50	3.25	158	2.77 qt	2.58 L	CASE	200	3200	16	

D = Deep



# FiberGrow Garden Pak Strips



21.00" ← Diameter Range → 21.00"



21.00" ← Diameter Range → 22.00" 15.00" ← Diameter Range → 18.00"

Part Code	Product Description	Dimensions in Inches			Capacity Cubic Inches	Volume		Paks Per Strip	Unit of Measure	Qty Per Case	Full Pallet Qty	Cases Per Pallet	Quantity Per Bulk Skid
		Outside Diameter	Inside Diameter	Height		US	Metric						
<b>Garden Pak Strips - Fit Standard 1020 Flat (Traditional)</b>													
FS.03010	301 FiberGrow Garden Pak Strip	21.00	10.75	2.50	113	1.96 qt	1.85 L	3 Paks	CASE	50	1000	20	
FS.04011	D 401D FiberGrow Garden Pak Strip	21.00	10.75	2.50	117	2.02 qt	1.91 L	6 Paks	CASE	50	800	16	1080
FS.06010	601 FiberGrow Garden Pak Strip	21.00	10.50	2.50	51	1.76 pt	833 mL	6 Paks	CASE	50	1000	20	1080
FS.06011	D 601D FiberGrow Garden Pak Strip	21.00	11.00	3.00	71	1.22 qt	1.15 L	6 Paks	CASE	50	1000	20	1080
FS.08010	801 FiberGrow Garden Pak Strip	21.00	11.00	2.50	37	1.28 pt	606 mL	8 Paks	CASE	50	1000	20	
FS.10010	1001 FiberGrow Garden Pak Strip	21.00	10.75	2.50	29	1.00 pt	473 mL	10 Paks	CASE	50	1000	20	
FS.10011	D 1001D FiberGrow Garden Pak Strip	21.75	11.00	2.75	35	1.20 pt	565 mL	10 Paks	CASE	50	800	16	
FS.12010	1201 FiberGrow Garden Pak Strip	21.00	10.50	2.50	23	12.80 fl oz	379 mL	12 Paks	CASE	50	1000	20	
FS.12011	D 1201D FiberGrow Garden Pak Strip	21.25	11.25	2.75	29	1.00 pt	473 mL	12 Paks	CASE	50	1000	20	756
FS.18350	3.50 Square FiberGrow Garden Pak Strip	21.00	11.25	3.00	17	9.60 fl oz	284 mL	18 Pots	CASE	50	800	16	
FS.08450	4.50 Square FiberGrow Garden Pak Strip	21.75	11.50	3.50	58	1.01 qt	950 mL	8 Pots	CASE	50	800	16	
<b>Garden Pak Strips - Fit "S" Carrier or Connecticut Flat</b>													
FSC01420	142 FiberGrow Garden Pak Strip	15.75	13.75	3.00	58	1.01 qt	1.32 L	6 Paks	CASE	50	1200	24	
FSC01320	132 FiberGrow Garden Pak Strip	17.00	16.00	2.75	52	1.82 pt	861 mL	8 Paks	CASE	50	750	15	
FSC01440	144 FiberGrow Garden Pak Strip	17.75	15.75	2.75	81	1.40 qt	1.32 L	6 Paks	CASE	50	750	15	

D = Deep

# FiberGrow Nursery Pots



Part Code	Product Description	Dimensions in Inches		Capacity Cubic Inches	Volume		Unit of Measure	Quantity Per Sleeve	Quantity Per Bulk Skid
		Outside Diameter	Height		US	Metric			
FNP06060	TW 5.75 x 6.50 FiberGrow Thin Wall Nursery Pot	5.75	6.50	129	2.23 qt	2.11 L	SLV	70	
FNP06070	TW 6.00 x 7.00 FiberGrow Thin Wall Nursery Pot	6.00	7.00	162	2.81 qt	2.66 L	SLV	70	
FNP06060	6.50 x 6.00 FiberGrow Nursery Pot	6.50	6.00	154	2.67 qt	2.53 L	SLV	80	1770
FNP07080	7.00 x 7.75 FiberGrow Nursery Pot	7.00	7.75	212	3.67 qt	3.47 L	SLV	35	
FNP07070	7.50 x 7.00 FiberGrow Nursery Pot	7.50	7.00	240	1.04 gal	3.94 L	SLV	70	1350
FNP08090	8.00 x 8.50 FiberGrow Rose Pot	8.00	8.50	555	2.40 gal	9.09 L	SLV	35	
FNP08090	TW 8.25 x 8.75 FiberGrow Thin Wall Rose Pot	8.25	8.75	316	1.37 gal	5.19 L	SLV	40	1500
FNP08080	8.50 x 8.25 FiberGrow Nursery Pot	8.50	8.25	366	1.59 gal	6.02 L	SLV	35	840
FNP09010	9.75 x 9.50 FiberGrow Nursery Pot	9.75	9.50	515	2.23 gal	8.44 L	SLV	25	
FNP10090	10.50 x 8.50 FiberGrow Nursery Pot	10.50	8.50	578	2.50 gal	9.47 L	SLV	25	432
FNP10110	10.50 x 10.50 FiberGrow Nursery Pot	10.50	10.50	670	2.90 gal	11.00 L	SLV	25	
FNP11090	11.50 x 9.25 FiberGrow Nursery Pot	11.50	9.25	772	3.34 gal	12.60 L	SLV	25	450
FNP11120	11.50 x 11.50 FiberGrow Nursery Pot	11.50	11.50	876	3.79 gal	14.30 L	SLV	20	
FNP12090	12.25 x 8.50 FiberGrow Nursery Pot	12.25	8.50	802	3.47 gal	13.10 L	SLV	25	
FNP12110	12.00 x 10.75 FiberGrow Nursery Pot	12.00	10.75	954	4.13 gal	15.60 L	SLV	20	
FNP13100	13.25 x 09.75 FiberGrow Nursery Pot	13.25	9.75	1112	4.82 gal	18.20 L	SLV	20	
FNP13120	13.00 x 11.75 FiberGrow Nursery Pot	13.00	11.25	1202	5.21 gal	19.70 L	SLV	20	
FNP15100	14.75 x 9.75 FiberGrow Nursery Pot	14.75	9.75	1387	6.00 gal	22.70 L	SLV	20	
FNP15120	15.50 x 11.75 FiberGrow Nursery Pot	15.50	11.75	1583	6.85 gal	25.90 L	SLV	15	
FNP15140	15.00 x 13.25 FiberGrow Nursery Pot	15.00	13.25	1776	7.69 gal	29.10 L	SLV	15	
FNP18150	18.50 x 14.00 FiberGrow Nursery Pot	18.50	14.00	2814	12.20 gal	46.10 L	SLV	10	
FNP20140	20.00 x 14.00 FiberGrow Nursery Pot	20.00	14.00	3456	15.00 gal	56.60 L	SLV	10	

TW = Thin Wall





## What is Coir?

Coir is the ground-up outer husk of coconuts, consisting of both coir dust and coir fiber. By turning the discarded husks into soil replacement and other growing containers, we are helping to both eliminate environmental waste and make the coconut completely sustainable.

## Why Coconuts?

Coconuts are abundant and grown in over 90 countries. Additionally, they are hyper-renewable, since each plant produces approximately 75 to 150 coconuts per year. This, combined with the fact that coir fibers can be processed in many ways to create various compositions and attributes, makes coconut usage an attractive and eco-friendly choice!



## Order your custom benchtape, hangable header card, mountable header card, tabletop sign and fence banner in 5 easy steps:

1. Log on to <https://docstore.fedex.com/plantbestplantthepot>
2. Upload your logo in file format (bmp, jpg, jpeg, png, tif, tiff) 300dpi
3. Choose your signage and order quantity
4. Check out using your credit card
5. Receive your shipment via FedEx in 5-7 days

### Product Sizes:

- Bench Tape (6" x 4")
- Hangable Header Card (24" x 36")
- Mountable Header Card (24" x 36")
- Tabletop Sign (17" x 22")
- Fence Banner (6' x 3')

Ask your sales representative about our shrink wrap or pre-labelled capabilities



See next page for our Coir products

# Coconut Coir Biodegradable Products



**CRS02250**



**CRS03000**



**CRS04000**



**CRS040T0**



**CRS04500**



**CRS045T0**



**CRA05000**



**CRS050T0**



**CRA06000**



**CRQ03000**



**CRQ03500**



**CRQ04250**



**CRNST1G0**

Part Code	Product Description	Outside Diameter		Height		Max Liquid Volume		Case Pack	Compatibility
		Inches	cm	Inches	cm	US	Metric		
CRS02250	2.50 Round Coir Pot	2.50	6.35	2.32	5.87	3.38 fl oz	100 mL	3000	PR0024R0
CRS03000	3.00 Round Coir Pot	3.31	8.41	3.12	7.93	8.79 fl oz	260 mL	1540	MPB06355
CRS04000	4.00 Round Coir Pot	3.87	9.84	3.50	8.89	13.70 fl oz	406 mL	1032	TRS10400, TCR10406, TRS14400, TCR06400, TRS06400, TRS15400
CRS040T0	4.00 Round Coir Pot Tall	4.12	10.48	4.01	10.20	1.16 pt	550 mL	1344	TRS101P0, TIS40101
CRS04500	4.50 Round Coir Pot	4.37	11.11	3.87	9.84	1.27 pt	600 mL	660	TRS10450, TRS15450
CRS045T0	4.50 Round Coir Pot Tall	4.75	12.07	4.62	11.75	2.00 pt	950 mL	800	TRS10QD0, TCR081Q4
CRA05000	5.00 Round Coir Pot	4.87	12.38	3.81	9.68	1.80 pt	850 mL	320	TCA08502
CRS050T0	5.00 Round Coir Pot Tall	5.25	13.34	4.50	11.43	1.25 qt	1.18 L	504	TIS55064, TCA06550
CRA06000	6.00 Round Coir Pot	5.87	14.92	4.12	10.48	1.33 qt	1.26 L	448	TCA06600, TRS066E0, TIS60061
CRQ03000	3.00 Sq Coir Pot	3.25	8.26	3.00	7.62	8.45 fl oz	250 mL	800	TCS18330
CRQ03500	3.50 Sq Coir Pot	3.81	9.68	4.00	10.16	15.20 fl oz	450 mL	900	TCS18401, TCS12330
CRQ04250	4.25 Sq Coir Pot	4.37	11.11	3.81	9.68	1.59 pt	750 mL	600	TRK10450, TRK12450
CRNST1G0	1.00 Gal Coir Nursery Pot	6.37	16.19	6.12	15.56	2.56 qt	2.42 L	264	TRS06170, TRPTGAL0, TCW03SG0
CRN02G00	2.00 Gal Coir Collapse Nursery Pot	8.50	21.59	9.00	22.86	1.80 gal	6.80 L	10	
CRN03G00	3.00 Gal Coir Collapse Nursery Pot	10.50	26.67	9.80	24.90	2.54 gal	9.60 L	10	

Compatible with HC products



**CRT01751**



**CRT02501**



**CRT03001**

Part Code	Product Description	Length		Outside Diameter		Height		Max Liquid		Case Pack
		Inches	cm	Inches	cm	Inches	cm	US	Metric	
CRT01751	1.75 x 10.00 Strip	10.00	25.40	4.00	10.16	2.00	5.08	1.05 pt	500 mL	300
CRT02501	2.50 x 8.00 Strip	10.37	26.35	4.75	12.07	2.25	5.72	2.52 pt	1200 mL	200
CRT03001	3.00 x 6.00 Strip	9.25	23.50	6.25	15.88	3.00	7.62	3.16 pt	1500 mL	200



# Index A-I

AMK06000.....	62	CDH12000.....	35	FHZSA120(CA).....	85	FRS04000.....	82
AMK06002.....	62	COV04000.....	47	FHZSA140(CA).....	85	FRS04040.....	88
AMK06004.....	62	COV04001.....	47	FHZSA160(CA).....	85	FRS04250.....	82
AMK10000.....	62	COV07000.....	47	FHZSA180(CA).....	85	FRS04500.....	82
AMK10001.....	62	COV07001.....	47	FHZSEZWL.....	84	FRS05000.....	82
AMK10002.....	62	CPA06003.....	44	FHZSEZWS.....	84	FS.03010.....	91
AMK10003.....	62	CPA08002.....	44	FHZSHD4W.....	84	FS.04011.....	91
AMK10005.....	62	CPA10002.....	44	FHZSL4W0.....	84	FS.06010.....	91
AMK10010.....	62	CPA10003.....	44	FLP12090.....	88	FS.06011.....	91
AMK10012.....	62	CPA12000.....	44	FNP06060.....	92	FS.08010.....	91
AMK10014.....	62	CPA12001.....	44	FNP07060.....	89	FS.08450.....	91
AMK11004.....	62	CPA14000.....	44	FNP07070.....	92	FS.10010.....	91
AMK11005.....	62	CPB10001.....	44	FNP07080.....	92	FS.10011.....	91
AMK12000.....	63	CPB12000.....	44	FNP08080.....	92	FS.12010.....	91
AZD06000.....	15	CPB14000.....	44	FNP08090.....	92	FS.12011.....	91
AZD06002.....	15	CPB16000.....	44	FNP09010.....	92	FS.18350.....	91
AZD06500.....	17	CPH12000.....	35	FNP10090.....	92	FSC01320.....	91
AZE04500.....	13	CPP12000.....	44	FNP10110.....	92	FSC01440.....	91
AZE06000.....	15	CPP16000.....	44	FNP11090.....	92	FSQ04040.....	88
AZE06001.....	15	CPP20000.....	44	FNP11120.....	92	FSQ05040.....	88
AZE06500.....	17	CPS08000.....	44	FNP12090.....	92	FSQ4040.....	88
AZE06501.....	17	CPS12000.....	44	FNP12110.....	92	HCA10000.....	35
AZE07000.....	17	CPS15000.....	44	FNP13100.....	92	HER10000.....	34
AZE07500.....	17	CRA05000.....	94	FNP13120.....	92	HES08000.....	34
AZE08000.....	18	CRA06000.....	94	FNP15100.....	92	HES10000.....	34
AZE08001.....	18	CRN02G00.....	94	FNP15120.....	92	HES10001.....	34
AZE10000.....	18	CRN03G00.....	94	FNP15140.....	92	HFO09250.....	33
AZE10001.....	18	CRNST1G0.....	94	FNP18150.....	92	HNI10000.....	36
AZG04000.....	13	CRQ03000.....	94	FNP20140.....	92	HNI12000.....	36
AZG05001.....	15	CRQ03500.....	94	FPK01280.....	90	HPG10000.....	35
AZG06000.....	15	CRQ04250.....	94	FPK01330.....	90	HPG10001.....	35
AZG08501.....	18	CRS040T0.....	94	FPK01350.....	90	HPI10000.....	35
AZJ06001.....	15	CRS045T0.....	94	FPK01361.....	90	HQI10000.....	36
AZM06000.....	15	CRS050T0.....	94	FPK01390.....	90	HSI06000.....	35
AZM08000.....	18	CRS02250.....	94	FPK01440.....	90	HSI08001.....	35
AZM09000.....	18	CRS03000.....	94	FPK01480.....	90	HSI10001.....	35
AZN06501.....	17	CRS04000.....	94	FPK01570.....	90	HSI12000.....	35
AZN08000.....	18	CRS04500.....	94	FPK01600.....	90	HSI12007.....	35
AZN12000.....	18	CRT01751.....	94	FPK01800.....	90	HTI10002.....	33
BDS10000.....	62	CRT02501.....	94	FPK11200.....	90	HTI10750.....	33
BM.160H0.....	63	CRT03001.....	94	FPK12160.....	90	HTI12000.....	33
BM.200H0.....	63	DPR15500.....	48	FPK45300.....	90	HTM10002.....	33
BM.03000.....	62	DPR23500.....	48	FPN06070.....	92	HTO08750.....	34
BM.04000.....	62	DPS19000.....	44	FPP06060.....	87	HTO10752.....	34
BM.06000.....	62	EU150S70.....	6	FPP09090.....	87	HTO11501.....	34
BM.10000.....	62	EU150T50.....	6	FPP09090WA1.....	86	HTS08000.....	33
BM.12000.....	63	EU170S50.....	6	FPP10040.....	87	HTS10000.....	33
BM.16000.....	63	EU170T50.....	6	FPP10040(S).....	87	HTS11000.....	33
BM.20000.....	63	EU190S51.....	6	FPP10050.....	88	HTS12000.....	33
BM.28000.....	63	EU190S52.....	6	FPP10070.....	87	HWA11000.....	50
BMS160H0.....	63	EU190T51.....	6	FPP10080.....	87	HWA11005.....	36
BMS03000.....	62	EU210M50.....	6	FPP10080WA1.....	86	HWA13000.....	36, 50
BMS12000.....	62	EU210S50.....	6	FPP12050.....	87	HZP3C100.....	38
BMS16000.....	63	EU210T50.....	6	FPP12060.....	88	HZP3E100.....	38
BW.00070.....	63	FHB10H00WAX(GR).....	84	FPP12070.....	87	HZP3E102.....	38
BW.00100.....	63	FHB10XLOWAX(GR).....	83	FPP12070WA1.....	86	HZP3LSNO.....	38
BW.00150.....	63	FHB12XLOWAX(GR).....	83	FPP12100.....	87	HZP4E120.....	38
BW.00250.....	63	FHB08000WAX(GR).....	83	FPP12100WA1.....	86	HZP4E121.....	38
BW.00450.....	63	FHB10000WAX(GR).....	83	FPP13070.....	88	HZP4LFG0.....	84
BW.00650.....	63	FHB12000.....	85	FPP15050.....	88	HZP4LFG6.....	84
BWS00050.....	63	FHB12000WAX(GR).....	83	FPP15060.....	87	HZP4LSNO.....	38
BWS00055.....	63	FHE12XLOWAX(GR).....	83	FPP15080.....	88	HZP4MSNO.....	38
BWS00070.....	63	FHE10000WAX(GR).....	83	FPP15080WA1.....	86	HZP12PA0.....	38
BWS00100.....	63	FHE12000WAX(GR).....	83	FPP15120.....	88	HZS12HA0.....	38
CA.10010.....	46	FHE14000WAX(GR).....	84	FPP15120WA1.....	86	HZS14HA0.....	38
CAC04500.....	46	FHF12000WAX(GR).....	84	FPP16060.....	88	HZS21002.....	38
CAC09000.....	46	FHO13000WAX(GR).....	83	FPP18080.....	87	HZS14W0.....	38
CAC10020.....	46	FHR12000WAX(GR).....	83	FPP24060.....	88	HZS.L170.....	38
CBB14000.....	45	FHR14000.....	85	FPS11110.....	87	HZS.L210.....	38
CBH06500.....	36	FHR14000WA1.....	85	FR.05040.....	88	HZS.L240.....	38
CBH10000.....	36	FHR14000WAX(GR).....	84	FRA05000.....	82	HZSSL191.....	84
CBH11000.....	36	FHR16000.....	85	FRA05050.....	88	HZSSL221.....	84
CBH12000.....	36	FHR16000WA1.....	85	FRA06000.....	82	IJA06060.....	67
CBH13000.....	36	FHR18000.....	85	FRA06050.....	88	IJA06065.....	67
CBU06500.....	45	FHR18000WA1.....	85	FRP08050.....	89	IJA18010.....	67
CBU10500.....	45	FHS125H0WAX(GR).....	84	FRP08550.....	89	IJL06060.....	71
CBU12500.....	45	FHS10000WAX(GR).....	84	FRP09060.....	89	IJM01091.....	65
CBU15500.....	45	FHS12000WAX(GR).....	84	FRP10050.....	89	IJM01180.....	71
CBU19000.....	45	FHS12500WAX(GR).....	84	FRP11060.....	89	IJM03063.....	71
CDA10000.....	46	FHT14000WAX(GR).....	84	FRS03500.....	82	IJM06060.....	71
CDA12000.....	46	FHZ161(CA).....	85	FRS03540.....	88	IJS01201.....	65
CDA14000.....	46	FHZA141(CA).....	85	FRS03750.....	82	IJS02240.....	70

## Index I-T

IJS06060	70	NIT60001	74	PLG39250	72	SPHWPLA2	78
IJS06065	70	NIT60002	74	PLS20RW0	72	SPO160C0	43
IJS08060	70	NIT60005	74	PLU050S0	72	SPO200C0	43
IJS12040	70	NLE00050	61	PLU072S0	72	SPR09000	20
IJT03060	68	NLR00020	61	PLU098S0	72	SPR12000	20
IJT03065	68	NLR00030	61	PLU128S0	72	SPT001G0	20
IJT03090	68	NLR00070	61	PLU162S0	72	SPT001G1	20
IJT06060	68	NLR00150	61	PRO024R0	73	SPT001G3	20
IJT06065	68	NLS00020	61	PRO038R0	73	SPX24DB0	48
IJT18010	77	NLT00050	61	PRO040R0	73	SQA04000	25
IJY06060	71	NRT0T1G3	17	PRO050R0	73	SQA04500	25
INA06010	67	NRT0T3G2	61	PRO050R5	73	SQE04000	26
INA06060	67	NRT001Q1	15	PRO060P0	73	SQJ03505	27
INA08010	67	NRT07000	61	PRO060S0	73	SQJ05502	27
INA08040	67	NSB001G0	61	PRO072P0	73	SQJ05505	27
INA08060	67	NSB002G0	61	PRO072R0	73	SQJ05506	27
INA08061	67	NSR003G0	61	PRO075P0	73	SKK04001	26
INA08090	67	NSR007G0	61	PRO098R0	73	SKK04005	26
INA08120	67	NSS003G0	61	PRO20100	73	SKK04500	26
INA10010	67	NSS005G2	61	PRO21110	73	SKK04501	26
INA10040	67	NSS006G0	61	PTM10004	45	SKK04505	26
INA10060	67	NSS007G0	61	RNH10001	34	SQL03501	27
INA12010	67	NSS007G1	61	RNU09001	47	SQL04501	27
INA12020	67	NSS010G0	61	RNU12500	47	SQL05501	27
INA12030	67	NSS015G0	61	RTH12000	36	SQL05505	27
INA12040	67	NSS020G0	61	SAA14000	48	SQN02500	25
INA12060	67	NTT60000	74	SCA06500	46	SQN03000	25
INA18010	67	NUE005G0	61	SCC10020	46	SQN03500	25
INA18040	67	PA.04000	42	SCD06000	39	SQN04000	25
INA24010	67	PA.04500	42	SCD08000	39	SQN04500	25
INM04060	68	PA.06000	42	SCL04000	18	SQV00940	10
INM04065	65	PA.06001	42	SCL06000	18	SR.06000	20
INM12011	65, 68	PA.06501	42	SCL06001	18	SR.07000	20
INP15400	76	PA.08000	42	SCL06500	18	SR.08000	20
INP15450	76	PA.09000	42	SCL08000	18	SR.10000	20
INP18010	76	PA.10000	42	SD.06000	39	SR.11500	20
INP18011	76	PA.10001	42	SD.08000	39	SR.12500	20
INP18012	77	PA.11000	42	SDD1000	39	SRP13500	20
INP18350	76	PA.12000	42	SDD12000	39	SRP15500	20
INP45100	77	PA.14000	42	SDN08000	39	ST.45MM0	22
INP45101	77	PAB06500	42	SDN10000	39	ST.55MM0	22
INP45150	76	PAB08000	42	SDN12000	39	ST.65MM0	22
INS12045	70	PAB10000	42	SDS07000	39	ST.85MM0	22
INT01120	65	PAB12000	42	SEA14000	48	STD04000	13
INT04120	68	PAB14000	42	SGH10000	50	STD04001	13
INT08040	68	PAC04000	43	SH.11500	45	STD04500	13
INT08060	68	PAC04500	43	SH.13500	45	STD05000	15
INT08061	68	PAC06000	43	SH.16000	45	STD08000	18
INT10065	68	PAC06001	43	SHH12000	36	STG03500	13
INT12010	68	PAC06500	43	SHW21000	48	STG04000	13
INT12030	68	PAC12500	43	SI.06000	39	STG04253	13
INT12031	68	PAN05005	23	SI.09000	39	STG04500	13
INT12040	68	PAN06000	23	SNA04000	18	STG04501	13
INT12045	68	PAN07005	23	SNA08000	18	STG06000	15
INT12060	68	PAN08001	23	SNA10000	18	STS08000	18
LIA16000	47	PAN08005	23	SNA12000	18	STT04001	3
LIA20000	47	PAN10001	23	SOR06000	43	STT04250	3
LIA24000	47	PAN10005	23	SPA08000	43	STT04501	3
MIH10002	34	PAN12000	23	SPA10000	43	SVP0450D	10
MIP10002	45	PAP12000	43	SPA12000	43	SVP03001	10
MNT12001	20	PAP16000	43	SPC06000	43	SVP03250	10
MNT14001	20	PAP20000	43	SPC08000	43	SVP03252	10
MNT16001	20	PBH12000	36, 51	SPC10000	43	SVP04001	10
MOA18500	48	PBP11000	51	SPG17CM0	20	SVP04501	10
MOA22000	48	PGA102H0	72	SPG17CMS	20	TAA12500	48
MOB12000	48	PGA105H0	72	SPG19CM1	20	TAB14000	48
MOH14000	36	PGA128R0	72	SPG19CMS	20	TAQ15000	48
NBB001G0	61	PGA128S0	72	SPG04000	20	TAW24000	48
NBB002G0	61	PGA288C0	72	SPG04500	20	TCA665J2	17
NBB003G0	61	PGA512C0	72	SPG06500	20	TCA06550	16
NBB005G0	61	PGT084S0	72	SPG07000	20	TCA06551	8
NBB08000	61	PGT144R0	72	SPG08000	20	TCA06600	16
NCS05000	61	PGT144S0	72	SPG08001	20	TCA06602	16
NCT01000	61	PGT288S0	72	SPG10000	20	TCA06604	16
NCT01001	61	PIA072S0	74	SPG10002	20	TCA06605	8
NCT02000	61	PIA288C0	74	SPG10010	20	TCA06650	17
NER005G0	61	PIA512C0	74	SPH2DPC0	78	TCA08502	16
NER015G0	61	PIP03600	74	SPH3DPC0	78	TCA08503	8
NIS010G0	74	PLG036S0	72	SPH13CH0	78	TCA08551	8
NIS70001	74	PLG200S0	72	SPH18HA0	78	TCA08552	16
NIT60000	74	PLG200S2	72	SPHBCHD0	78	TCA12332	4