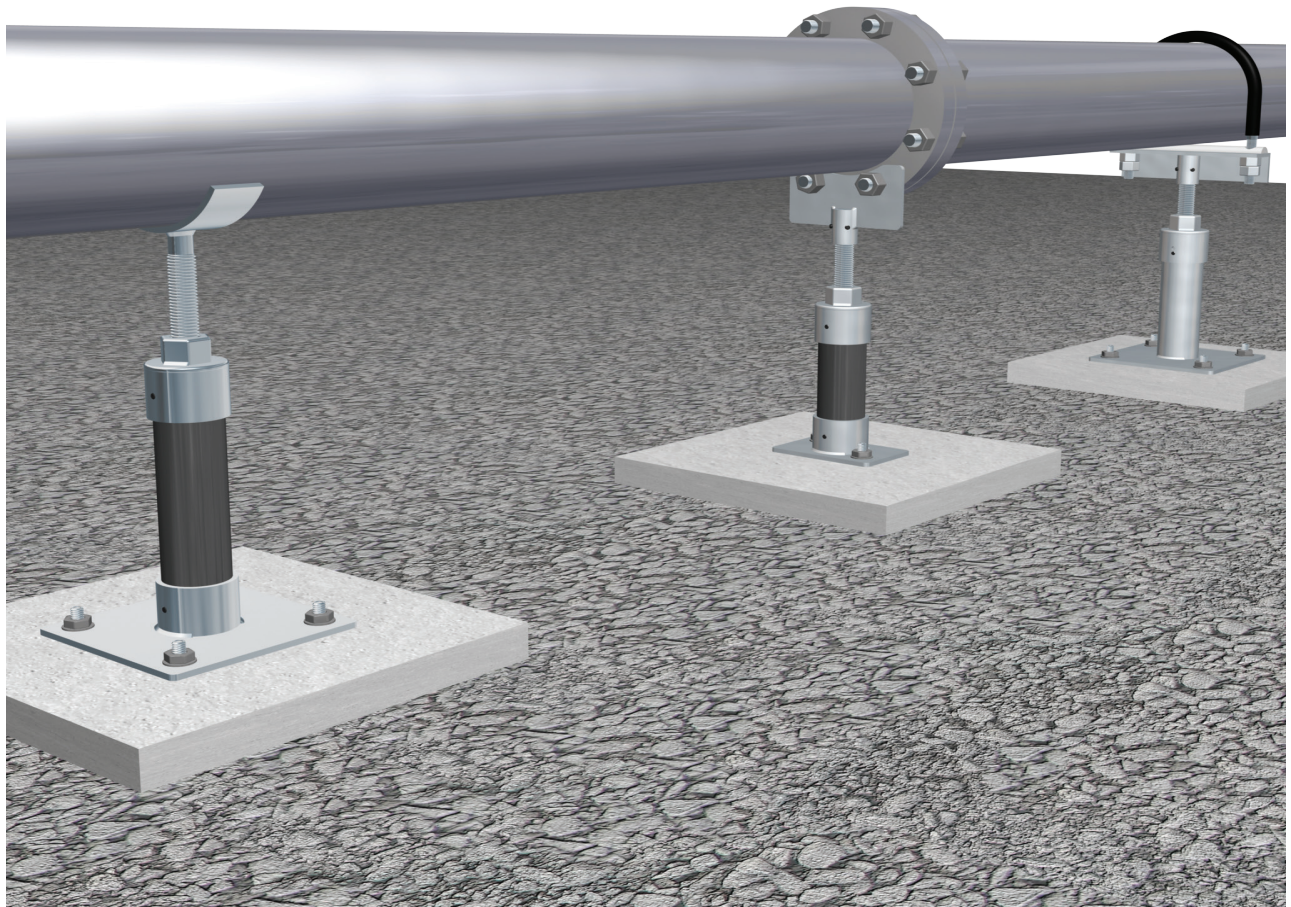


PIPE SUPPORTS



CCI PIPING SYSTEMS
PIPE PROTECTION PRODUCTS

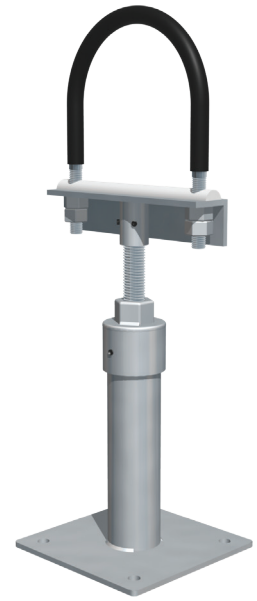
ccipipe.com • 800.867.2772



PIPE SUPPORTS

CCI Pipe Supports are designed for horizontal pipelines allowing for vertical adjustment to adequately support the pipe from the base structure. The base stand options will accommodate the users grade requirements. The variety of head styles provide versatility for various project support needs. In addition, CCI Pipe Supports are available in several corrosion resistant finishes.

Approvals: Conforms to Federal Specification WW-H-171E & A-A-1192A, Type 39 & 38 and Manufacturers Standardization Society ANSI/MSS SP-69 & SP-58, Type 38 & 37.



STANDARD PIPE SUPPORT

CCI Standard Pipe Supports are supplied with a Sch 40 stand pipe welded to the base plate at a height requested by the customer or can be cut in the field to accommodate grade requirements. The variety of interchangeable head styles provide versatility for the project support needs. The Standard Pipe Supports come with a 6" Teflon coated adjustment stud which provides $\pm 3"$ of smooth transition while adjusting. Interchangeable heads and adjustment assemblies feature a set screw for proper positioning during installation.

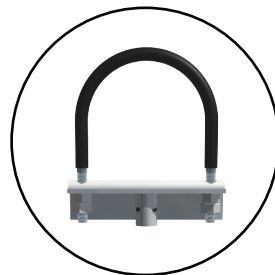
Nominal Pipe Size	Threaded Riser	U-Bolt Support Angle Iron	Saddle Support	Flange Support Plate Thickness
2	1" - 8 UN B7 Stud	2" X 2" X 1/4" (ASTM A36)	3/8" x 2" (ASTM A36)	1/4" (ASTM A36)
2 1/2				
3				
4				
5			1/2" x 2" (ASTM A36)	
6				
8				
10				
12	1 1/2" - 8 UN B7 Stud	2 1/2" X 2" X 1/4" (ASTM A36)	5/8" x 4" (ASTM A36)	3/8" (ASTM A36)
14				
16				
18				
20	2" - 8 UN B7 Stud	3" X 2" X 3/8" (ASTM A36)		
24				

Available Finishes: Hot Dip Galvanized, Primer Coated, 304 SS



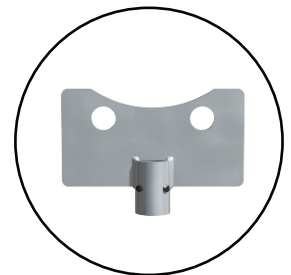
SADDLE

Designed to fit Ductile Iron pipe sizes



U-BOLT

Utilizes ArmorCote™ & ArmorPad™ pipe protection system



FLANGE

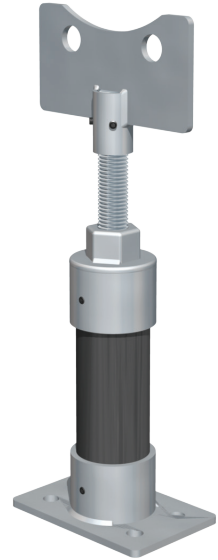
Designed for Class 125 flanges

COUPLING PIPE SUPPORT

CCI Coupling Pipe Supports allow the user to provide the necessary length of Sch 40 pipe to accommodate grade requirements. The variety of interchangeable head styles provide versatility for the project support needs. The Coupling Pipe Supports come with a 6" Teflon coated adjustment stud which provides $\pm 3"$ of smooth transition while adjusting. Interchangeable heads, adjustment assemblies and base coupling feature a set screw for proper positioning during installation.

- **Saddle** – Designed to fit Ductile Iron pipe
- **U-Bolt** – Utilizes our ArmorCote™ and ArmorPad™ pipe protection system
- **Flange** – Designed for Class 125 flanges

Available Finishes: Hot Dip Galvanized, Primer Coated, 304 SS



ARMORCOTE™ POLYOLEFIN COATED U-BOLTS

Developed in 1984, ArmorCote™ is the *original* coated u-bolt. ArmorCote™ has a cross-linked polyolefin coating which provides high compressive strength and tremendous abrasion resistance. ArmorPad™ Pipe Support Pads provide optimum support, while minimizing the point of contact and reducing crevice corrosion.

M2 PIPE SUPPORT

CCI M2 Pipe Supports allow the user to provide the necessary length of Sch 40 pipe to accommodate grade requirements. Both head styles are welded to the 6" single end adjusting stud. Adjustment assemblies and base couplings feature a set screw for proper positioning during installation.

- **Saddle** – Designed to fit Ductile Iron pipe with affixed threaded adjusting stud
- **Flange** – Designed for Class 125 flanges with affixed threaded adjusting stud

Available Finishes: Zinc Plated, 304 SS



COATING OPTIONS

HOT DIP GALVANIZED

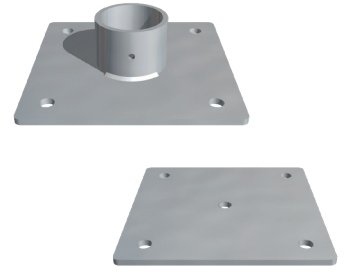
Hot Dip Galvanizing is a process in which molten zinc metallurgically reacts with steel to form a tightly-bonded alloy coating. Hot Dip Galvanizing provides superior corrosion protection to steel.

ZINC PLATED

Zinc Electroplating is a process involving electrodeposition of a thin coating of zinc onto another metal surface. The primary use is to prevent oxidation of the protected material.

BASE PLATES

Standard base plates are supplied with a Sch 40 stand pipe at a height requested by the customer or can be cut in the field to accommodate grade requirements. Coupling base plates come with a 2" high coupling designed to support a Sch 40 pipe which may be provided by the installer. The coupling features set screws for ease of positioning during installation. Other features include anchor bolt holes to properly secure the pipe support to the ground, as well as a drain hole located in the center of the base plate.



Nominal Pipe Size	Base Plate Collar	Stand Pipe Required	Flange Base Plate	U-Bolt/Saddle Base Plate	Anchor Bolt Holes
2	2½" SCH 40 Steel Pipe	2" SCH 40 Steel Pipe	4" x 6" x ¼" (ASTM A36)	4" x 6" x ¼" (ASTM A36)	Ø 9/16"
2 ½					
3					
4					
5					
6					
8					
10					
12	3½" SCH 40 Steel Pipe	3" SCH 40 Steel Pipe	8" x 8" x ½" (ASTM A36)	8" x 8" x ¼" (ASTM A36)	Ø 13/16"
14					
16	5" SCH 80 Steel Pipe	4" SCH 40 Steel Pipe	8" x 8" x ½" (ASTM A36)	8" x 8" x ½" (ASTM A36)	Ø 13/16"
18					
20					
24					

PACKAGING

The Coupling Pipe Supports and M2 Pipe Supports are packaged up to 2 per box. Boxes are compact and stackable for your inventory management needs. Each box is labeled clearly showing quantity, style, head style and coating, which allows for easier inventory control.

PIPE SUPPORTS

QTY: 2 PIPE SIZE: 4"

HEAD STYLE

FLANGE SADDLE U-BOLT

COATING

HDG ZINC OTHER

PSA - STD - UB - 2400 - PR	STANDARD ORDERING OPTIONS <i>Part Number Designation</i>
<ul style="list-style-type: none"> Finish ▶ Pipe Size ▶ Head Style ▶ Support Style ▶ Product Name ▶ 	
	PR - Primer GV - Galvanized ZN - Zinc SS - Stainless Steel
	Standard Pipe Sizes 2" - 24"
	UB - U-Bolt FLG - Flange SAD - Saddle
	STD - Standard CPL - Coupling M2 - Head Affixed to Stud
	Pipe Support Adjustable



CCI PIPING SYSTEMS, LLC

1026 O'Neal Drive • Breaux Bridge, LA 70517
 ccipipe.com • sales@ccipipe.com
 337.332.5808 • 800.867.2772