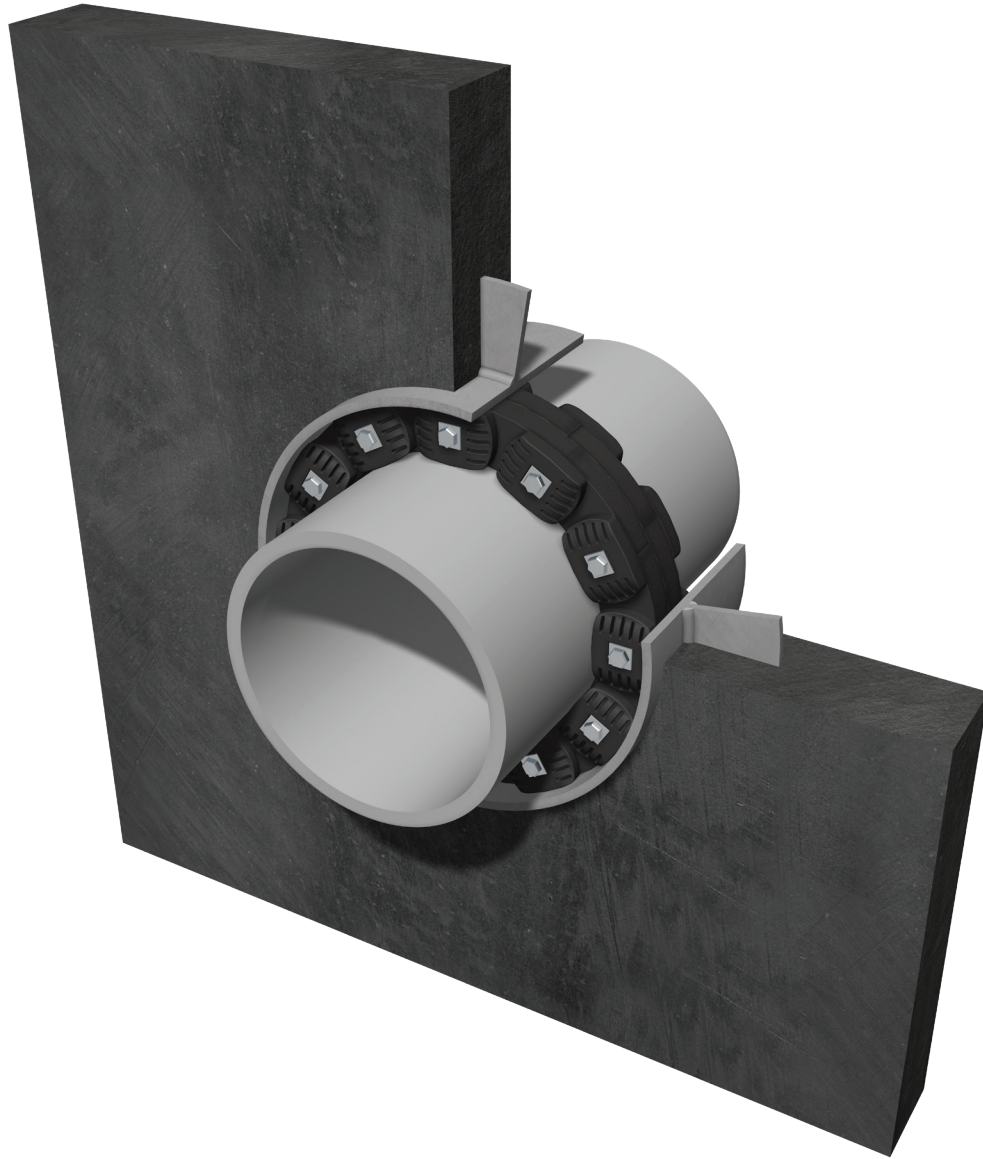


# WRAP-IT LINK™

WALL PENETRATION SEALS & WALL SLEEVES WITH WATER STOPS



**CCI PIPING SYSTEMS**  
**PIPE PROTECTION PRODUCTS**  
ccipipe.com • 800.867.2772

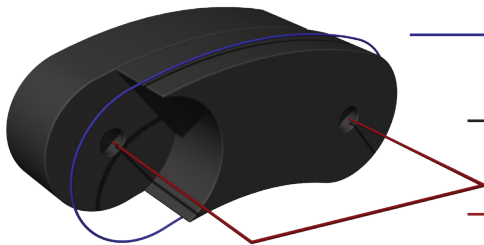
# WRAP-IT LINK™

Wrap-It Link™ form a mechanical rubber seal between pipes going through walls, floors, vaults, tanks and pipeline crossings. Wrap-It Link™ make a watertight seal. It can also seal the gap between an inner pipe and an outer pipe sleeve or pipeline casing. It seals the gap between electrical conduits and either the outer conduits or the wall hole it passes through. Wrap-It Link™ are designed to make a hydrostatic seal of up to 20 psig and up to 40 feet of head.



The Wrap-It Link™, in addition to its sealing properties, helps absorb vibration, shock and sound waves. The links will insulate the inner pipe from all other outer structures, including outer pipe sleeves, pipeline crossings, walls, and tanks. It is also ideal for filling gaps in interior walls and floors and keeping unwanted noise and fumes from invading office space. It has the added benefit of diminishing annoying liquid and turbulence noise.

This versatile link system can be utilized to seal the annular space of the carrier pipe and casing pipe applications, as well as wall penetrations of piping system. Wrap-It Link™ have excellent electrical insulation properties and may be used for pressure applications.



- Expanded State Thickness
- Free State Thickness
- Chord Length

## WRAP-IT LINK™ CALCULATOR

For your convenience, visit our website to utilize our Wrap-It Link™ calculator. Simply input the outer diameter of the pipe and the inner diameter of the hole. This feature will calculate which model number and how many links your job requires.

PIPE O.D.

HOLE I.D.

INCH       METRIC

## PHYSICAL PROPERTIES

Type	Seal Material	Pressure Plates	Bolts & Nuts	Temperature Range (°F)	Features
WL	EPDM Black	Glass Reinforced Plastic	Steel Zinc Dichromate	-40° to +250°	Suitable in most applications in water, both above ground & direct burial. Provides electrical insulation where cathodic protection is required.
WL-SS	EPDM Black	Glass Reinforced Plastic	Stainless Steel (316)	-40° to +250°	Same as WL, but with corrosion resistant stainless steel hardware.
WL-O	Nitrile	Glass Reinforced Plastic	Steel Zinc Dichromate	-40° to +250°	Resistant to most hydrocarbons, oil, gas, jet fuel and many solvents.
WL-O-SS	Nitrile	Glass Reinforced Plastic	Stainless Steel (316)	-40° to +250°	Same as WL-O, but with corrosion resistant stainless steel hardware.

# STANDARD WEIGHT STEEL PIPE, PVC AND CPVC PIPE

Nominal Pipe Size	Actual Pipe O.D.	Standard Weight Steel Pipe or PVC Pipe Sleeve*				Cast or Core Bit Drilled Hole*		
		Sleeve Nominal Pipe Size	Sleeve Actual I.D.	Wrap-It Link™ Model No.	Number of Links Required	Hole I.D.	Wrap-It Link™ Model No.	Number of Links Required
1/2"	0.840"	2"	2.067"	WL-200	4	2.0"	WL-200	4
3/4"	1.050"	2-1/2"	2.469"	WL-275	5	2.5"	WL-275	5
1"	1.315"	2-1/2"	2.469"	WL-200	5	3.0"	WL-300	4
1-1/4"	1.660"	3"	3.068"	WL-275	7	3.0"	WL-275	7
1-1/2"	1.900"	3-1/2"	3.548"	WL-300	5	3.5"	WL-300	5
2"	2.375"	4"	4.026"	WL-300	6	4.0"	WL-300	6
2-1/2"	2.875"	4"	4.026"	WL-200	9	4.0"	WL-200	9
3"	3.500"	5"	5.047"	WL-300	8	5.0"	WL-300	8
3-1/2"	4.000"	6"	6.065"	WL-325	5	6.0"	WL-325	5
4"	4.500"	6"	6.065"	WL-300	10	6.0"	WL-300	10
5"	5.563"	8"	7.981"	WL-430	13	8.0"	WL-430	13
6"	6.625"	10"	10.02"	WL-475	10	10.0"	WL-475	10
8"	8.625"	12"	12.00"	WL-475	12	12.0"	WL-475	12
10"	10.750"	14"	13.25"	WL-425	10	14.0"	WL-400	10
12"	12.750"	16"	15.25"	WL-425	12	16.0"	WL-400	12
14"	14.000"	18"	17.25"	WL-400	13	16.0"	WL-325	15
16"	16.000"	20"	19.25"	WL-400	15	18.0"	WL-325	17
18"	18.000"	24"	23.25"	WL-500	16	22.0"	WL-575	20
20"	20.000"	24"	23.25"	WL-400	18	24.0"	WL-575	22
22"	22.000"	26"	25.25"	WL-400	20	26.0"	WL-575	24
24"	24.000"	30"	29.25"	WL-500	21	28.0"	WL-575	26
26"	26.000"	30"	29.25"	WL-400	23	30.0"	WL-575	28
28"	28.000"	34"	33.25"	WL-500	24	32.0"	WL-575	30
30"	30.000"	36"	35.25"	WL-500	26	34.0"	WL-575	32
32"	32.000"	38"	37.25"	WL-500	27	36.0"	WL-575	34
34"	34.000"	40"	39.25"	WL-500	29	38.0"	WL-575	36
36"	36.000"	42"	41.25"	WL-500	30	40.0"	WL-575	38
42"	42.000"	48"	47.25"	WL-500	36	46.0"	WL-575	44
48"	48.000"	54"	53.25"	WL-500	41	52.0"	WL-575	50

\*Minimum recommended sleeve length or wall thickness is 4" for Wrap-It Link™ model 325 and smaller and 6" for models 400 and larger.

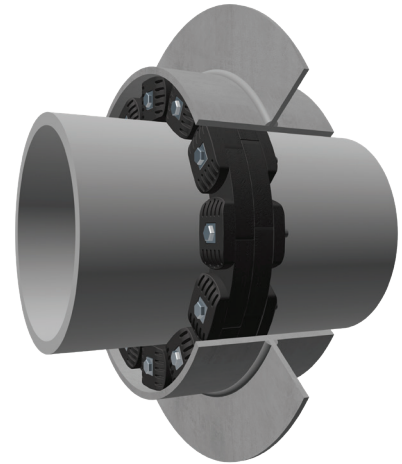
# COPPER TUBING

Nominal Pipe Size	Actual Pipe O.D.	Standard Weight Steel Pipe or PVC Pipe Sleeve*				Cast or Core Bit Drilled Hole*		
		Sleeve Nominal Pipe Size	Sleeve Actual I.D.	Wrap-It Link™ Model No.	Number of Links Required	Hole I.D.	Wrap-It Link™ Model No.	Number of Links Required
1/2"	.625"	2"	2.067"	WL-275	4	2.0"	WL-275	4
3/4"	.875"	2"	2.067"	WL-200	4	2.0"	WL-200	4
1"	1.125"	2-1/2"	2.469"	WL-275	6	3.0"	WL-315	4
1-1/4"	1.375"	2-1/2"	2.469"	WL-200	5	3.0"	WL-300	4
1-1/2"	1.625"	3"	3.068"	WL-275	8	3.0"	WL-275	8
2"	2.125"	3-1/2"	3.548"	WL-300	5	3.5"	WL-275	9
2-1/2"	2.625"	4"	4.026"	WL-275	11	4.0"	WL-275	11
3"	3.125"	5"	5.047"	WL-315	8	5.0"	WL-315	8
4"	4.125"	6"	6.065"	WL-315	10	6.0"	WL-315	10
6"	6.125"	8"	7.981"	WL-315	15	8.0"	WL-315	15
8"	8.125"	10"	10.02"	WL-325	9	12.0"	WL-575	10
10"	10.125"	14"	13.25"	WL-410	14	14.0"	WL-575	12
12"	12.125"	16"	15.25"	WL-410	16	16.0"	WL-575	14

\*Minimum recommended sleeve length or wall thickness is 4" for Wrap-It Link™ model 325 and smaller and 6" for models 400 and larger.

# WRAP-IT LINK™ APPLICATIONS

- Insulated Pipe Seals
- Electrical & Mechanical Contractors
- Offshore Oil Rigs
- Refrigeration Buildings
- Cased Pipeline Crossings
- Precast Concrete Manufacturers
- Valve Pits
- Electrical Isolation of Pipes
- Precast Concrete Vault Seals
- Dual Containment Seals
- Tunneling Operations
- Through Deck Fire Breaks
- Therman Storage Systems
- Pool Contractors
- Wastewater & Water Treatment Plants
- Fire Protection Wall Penetrations
- Telecommunications
- Marine Applications
- Power Generation Dams
- Manhole Pipe Entry Seals
- Perimeter Berm Installations Around Tank Farms
- Noise Dampening
- Bridge Construction



## DUCTILE IRON PIPE (AWWA-TYPE)

Nominal Pipe Size	Actual Pipe O.D.	Standard Weight Steel Pipe or PVC Pipe Sleeve*				Cast or Core Bit Drilled Hole*		
		Sleeve Nominal Pipe Size	Sleeve Actual I.D.	Wrap-It Link™ Model No.	Number of Links Required	Hole I.D.	Wrap-It Link™ Model No.	Number of Links Required
2"	2.500"	4"	4.026"	WL-300	6	4.0"	WL-300	6
2-1/4"	2.750"	5"	5.047"	WL-340	7	5.0"	WL-340	7
3"	3.960"	6"	6.065"	WL-325	5	6.0"	WL-325	5
4"	4.800"	8"	7.981"	WL-410	7	8.0"	WL-410	7
6"	6.900"	10"	10.02"	WL-410	10	10.0"	WL-410	10
8"	9.050"	12"	12.00"	WL-400	9	12.0"	WL-400	9
10"	11.100"	14"	13.25"	WL-325	12	14.0"	WL-400	10
12"	13.200"	16"	15.25"	WL-325	14	16.0"	WL-360	21
14"	15.300"	18"	17.25"	WL-325	16	18.0"	WL-425	14
16"	17.400"	20"	19.25"	WL-315	39	20.0"	WL-360	27
18"	19.500"	24"	23.25"	WL-475	25	22.0"	WL-425	18
20"	21.600"	26"	25.25"	WL-475	28	26.0"	WL-525	19
24"	25.800"	30"	29.25"	WL-400	23	30.0"	WL-575	28
30"	32.000"	38"	37.25"	WL-500	27	36.0"	WL-575	34
36"	38.300"	42"	41.25"	WL-400	34	43.0"	WL-525	33
42"	44.500"	48"	47.25"	WL-425	39	49.0"	WL-525	38
48"	50.800"	54"	53.25"	WL-425	45	56.0"	WL-500	43

\*Minimum recommended sleeve length or wall thickness is 4" for Wrap-It Link™ model 325 and smaller and 6" for models 400 and larger.

## CAST IRON SOIL PIPE (EXTRA HEAVY)

Nominal Pipe Size	Actual Pipe O.D.	Standard Weight Steel Pipe or PVC Pipe Sleeve*				Cast or Core Bit Drilled Hole*		
		Sleeve Nominal Pipe Size	Sleeve Actual I.D.	Wrap-It Link™ Model No.	Number of Links Required	Hole I.D.	Wrap-It Link™ Model No.	Number of Links Required
2"	2.380"	4"	4.026"	WL-300	6	4.0"	WL-300	6
3"	3.500"	5"	5.047"	WL-300	8	5.0"	WL-300	8
4"	4.500"	6"	6.065"	WL-300	10	6.0"	WL-300	10
5"	5.500"	8"	7.981"	WL-425	6	8.0"	WL-425	6
6"	6.500"	10"	10.02"	WL-475	10	10.0"	WL-475	10
8"	8.620"	12"	12.00"	WL-475	12	12.0"	WL-475	12
10"	10.750"	14"	13.25"	WL-425	10	14.0"	WL-400	10
12"	12.750"	16"	15.25"	WL-425	12	16.0"	WL-400	12
15"	15.880"	20"	19.25"	WL-400	15	20.0"	WL-575	18

\*Minimum recommended sleeve length or wall thickness is 4" for Wrap-It Link™ model 325 and smaller and 6" for models 400 and larger.

# CASING SPACERS & END SEALS

If you are looking to improve performance, reliability and productivity, then CCI's casing spacers are just what you are looking for. Casing spacers provide electrical insulation, will not rot or settle, support carrier pipe weight uniformly, protect against long term corrosion, require no casing filler, and slide into place easily.

Carbon Steel & Stainless Steel Spacers are manufactured using heavy duty two-piece #304 Stainless Steel or Carbon Steel with durable glass filled polymer runners. Spacers are lined with ribbed PVC rubber to prevent electrical contact between the carrier pipe and the metallic spacer. Carbon Steel Spacers are fabricated from pickled and oiled steel and then coated with a fusion bonded copolymer based thermoplastic for superior abrasion resistance and corrosion protection. Spacers for bell & spigot joints, or large diameter applications, are designed and fabricated to insure an extra margin of support. CCI Piping Systems has the experience to design and manufacture virtually any configuration of casing spacer, including multi-carrier clusters within a single casing.

Polyethylene Spacers are injection molded from high-density polyethylene. Providing an economical alternative to metallic casing spacers, they also have excellent dielectric strength and low moisture absorption, which provides minimal electric current loss with no impairment of cathodic protection.

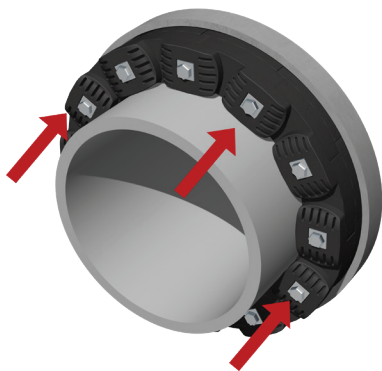
## WRAP-IT LINK™ INSTALLATION INSTRUCTIONS

### STEP 1

Center the carrier pipe within the core drilled hole, casing pipe, or wall sleeve. The carrier pipe must be centered and adequately supported prior to installing the Wrap-It Link™ belt assembly.

### STEP 2

Hand tighten each pressure plate to make slight contact with the link. Wrap the link belt around the carrier pipe and connect the first and last links. Ensure all bolt heads are facing the installer.

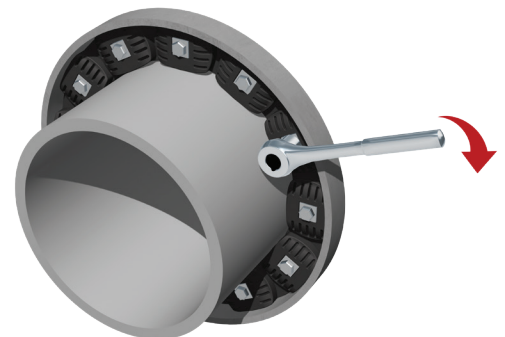


### STEP 3

Slide the Wrap-It Link™ belt assembly into the annular space starting at the 6 o'clock position, working both sides up toward the 12 o'clock position. *Note: Slack or sag is normal and the installer should NOT remove any links.*

### STEP 4

Using a HAND ratchet with a socket, begin tightening the bolts from the 12 o'clock position and continue clockwise in a sequential pattern.



### STEP 5

Tighten each link the same number of turns, not to exceed 4 turns per round. Repeat the process until the links begin to bulge slightly around the pressure plates. Make an additional round being careful not to overtighten the bolts.

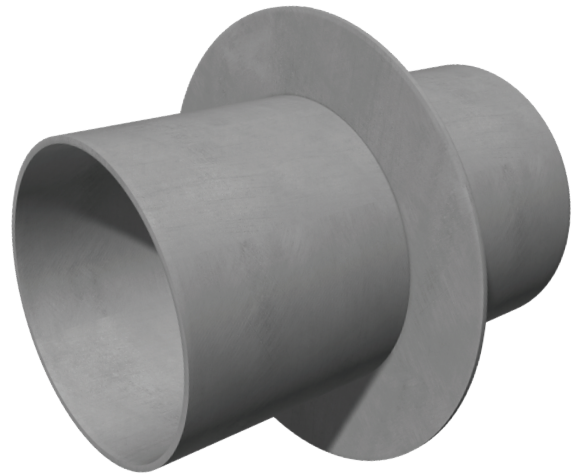
### STEP 6

If a seal is unable to be achieved using the instructions provided, call CCI at 800-867-2772.

# WALL SLEEVES

CCI has your solution to all of your sealing needs when it comes to wall penetration. Our complete sealing system includes Wrap-It Link™ Wall Penetration Seals and Wall Sleeves with water stops. Working together, these products will provide you with the necessary seal for your piping system.

Wall damage, often caused by vibration of utility piping or pipe repair, can easily be avoided using CCI's wall sleeves. Providing a seal that cannot be matched by core drilled holes, our wall sleeves are the answer to your sealing problems. CCI's wall sleeves have been specifically designed to pair with Wrap-It Link™ Wall Penetration Seals for a leak resistant sealing system.



## SPECIFICATIONS

- 2"-24" diameter x 12" length standard  
*Special sizes available*
- 2" standard water stop
- Water stop continuously welded on both sides

## MATERIAL

- A53/A500 B STD Steel
- PVC

## FINISH

- Plain (Bare Steel)
- Primer Coated (Black Primer)
- Hot Dipped Galvanized

## ORDERING INFORMATION

**WS - PR - 1212**

/

|

|

\

Wall Sleeve  
w/ Water Stop

Primer  
Coated

Nominal  
Sleeve Size

Sleeve  
Length

**PR** - Primer Coated  
**GV** - Galvanized

**CS** - Bare Carbon Steel  
**PL** - Plastic

## STEEL WALL SLEEVES

Nominal Sleeve Size	Sleeve I.D.
2"	2.06"
2-1/2"	2.46"
3"	3.06"
3-1/2"	3.54"
4"	4.02"
6"	6.06"
8"	7.98"
10"	10.02"
12"	12.00"
14"	13.25"
16"	15.25"
18"	17.25"
20"	19.25"
22"	21.25"
24"	23.25"

## PVC WALL SLEEVES

Nominal Sleeve Size	Sleeve I.D.
2"	2.05"
2-1/2"	2.45"
3"	3.04"
4"	3.99"
6"	6.03"
8"	7.94"
10"	9.98"
12"	11.89"
14"	13.07"
16"	14.94"
18"	18.00"
21"	21.18"
24"	23.83"

*Schedule 40 sizes also available upon request.*

CCI offers both Carbon Steel and PVC standard wall sleeves in 12" lengths with 2" water stops. Standard diameters, 2" through 24", are stocked and ready for immediate shipment. Custom diameters and lengths are also available upon request.



## CCI PIPING SYSTEMS, LLC

1026 O'Neal Drive • Breaux Bridge, LA 70517  
 ccipipe.com • sales@ccipipe.com  
 337.332.5808 • 800.867.2772