

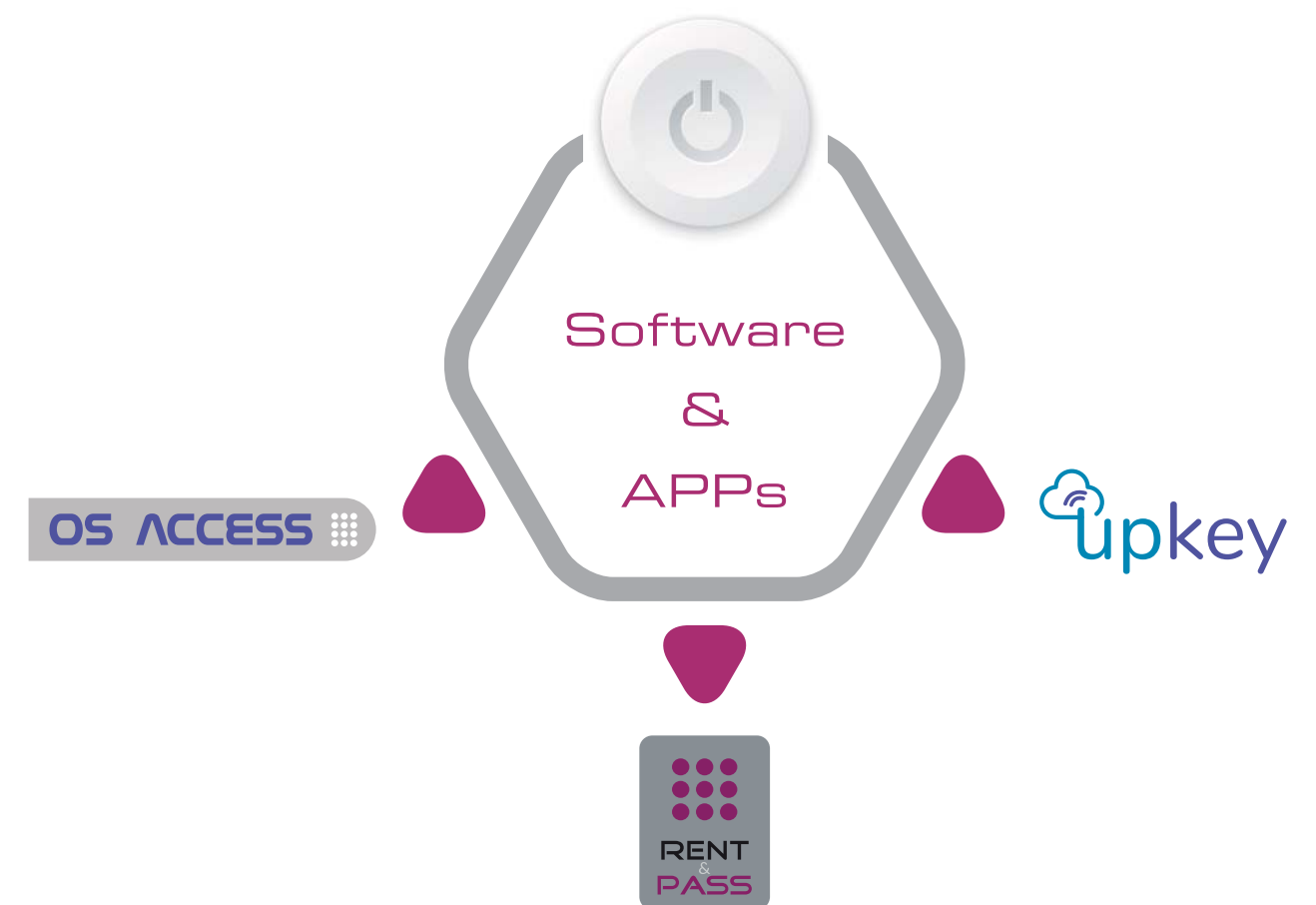


management systems

solutions

OMNITEC has developed different access management systems to meet the needs of any facility, and to simplify the management and control of access credentials for workers, external personnel, guests and customers.

OMNITEC's management systems and apps act as the backbone of a comprehensive access plan in a wide range of sectors.



adaptability & performance

The adaptability of the platform to the needs of the customer is one of the key points. The system adapts to the facility gradually, depending on the size of the access plan, the diversity of devices installed and user profiles. Its scalability means it can be modified in the future depending on customer requirements. Thus, the customer handles only the functionalities required for their facility so they can focus on their pre-established access plan and optimise their daily work.

A wide range of electronic devices means that access through external and internal doors and to individual rooms, as well as cabinet opening and presence of users, as an example, can all be controlled and audited.

OS ACCESS

OS ACCESS software

OS ACCESS is the most innovative development by **OMNITEC** that meets the most demanding technical requirements in installations and can optimise the management of facilities access credentials and security for MiFare proximity, numeric code and Bluetooth devices.

Designed to work in the Cloud from a web browser, **OS ACCESS** also offers a desktop version for a local network.



The **OS ACCESS** software is complemented by the **UpKey** app, used for the installation and management of Bluetooth locks and devices, as well as for access to the different rooms via Smartphone.

Users receive their keys on their Smartphone and can access the permitted areas using **UpKey** on their own phone.



CLOUD Server

Software installed on a secure Cloud server, which users access through a browser without the need to install additional software on their PCs.
Accessibility, maximum security and efficiency in managing access control.



Flexible Configuration

OS ACCESS offers full flexibility to configure the software to suit your business.
It incorporates pre-configured profiles for Hotels, Offices, Residences and Tourist Apartments. For all other cases, OS ACCESS allows you to configure a personalised profile by activating the system modules required for access control.



Remote Management

Performing remote daily tasks such as managing guest and employee credentials, opening records, maintenance and emergency openings are possible through connectivity via Gateways.



Staff Credentials

Establishing employee profiles streamlines and minimises the management of the access plan.
Permission changes are updated for all profile members.
Specific access permissions are granted for users who do not fit into any profile.



Opening Alerts

Configures your push notifications for openings and attempted openings of certain locks or devices equipped with Bluetooth.
Online security and access control with special restrictions.



Fast Check-In

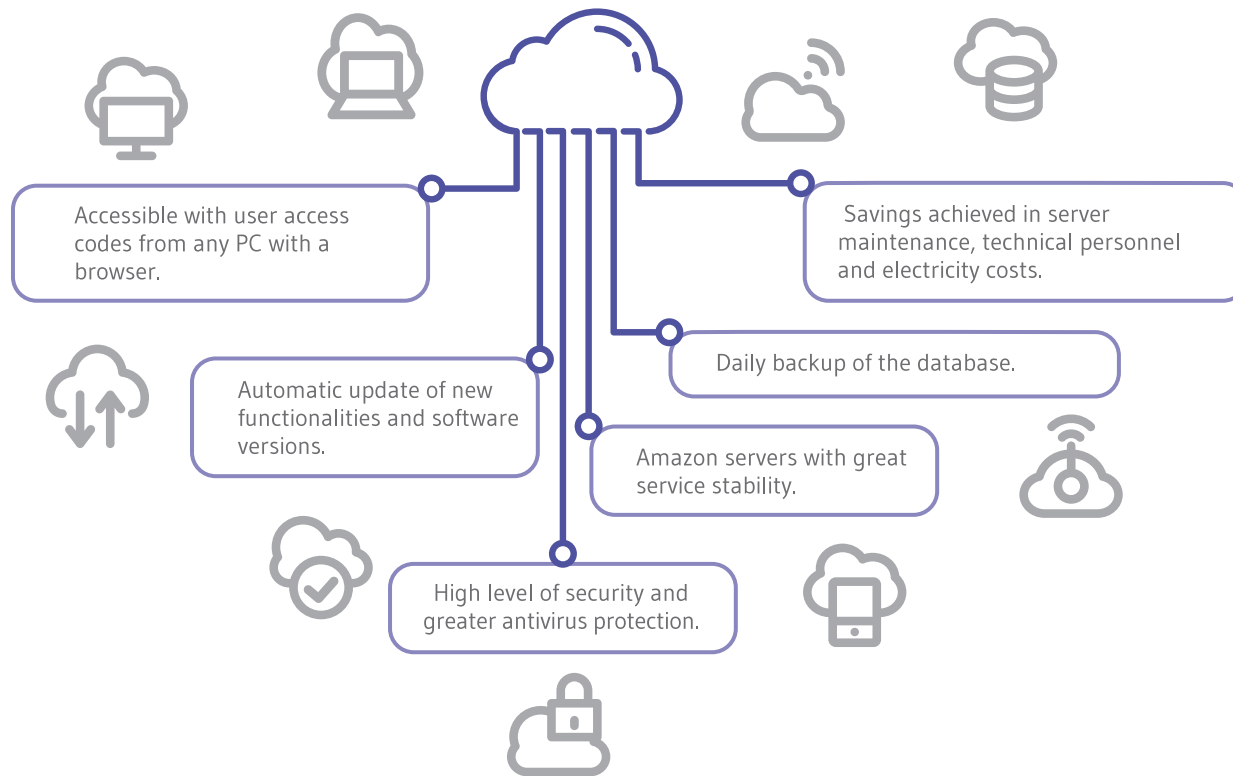
Quick procedure for creating guest cards with just 2 pieces of data.
MiFare cards, numeric codes and Bluetooth keys can be created quickly to streamline the guest check-in process.



OMNI UX

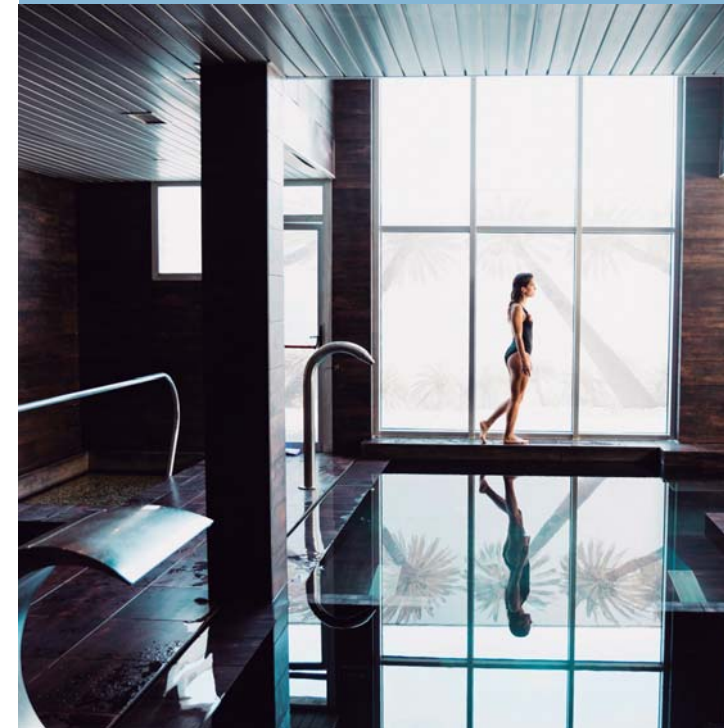
Modern design with an intuitive interface, made especially with the user experience in mind.
OS ACCESS OMNI UX usability allows to save time in the processes and personnel training.

cloud server ADVANTAGES



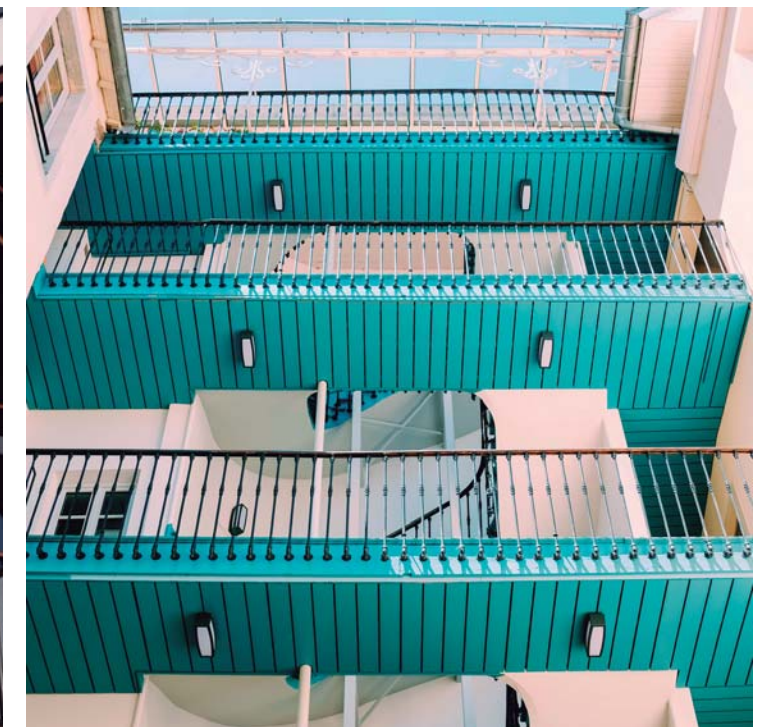
A fundamental factor in the **OS ACCESS** development plan is the flexibility and adaptability of the system to the particular requirements of the premises.

The pre-established installation profiles for **Hotel, Offices, Residences and Tourist Apartments** cover the needs of practically all premises. However, **OS ACCESS** provides an ad hoc configuration for specific cases with particular needs.



features

- **Access by browser optimises the availability**, security and efficiency of the system.
- **Encrypted data recording** on identification media.
- **Multi-user license** valid for use under a Windows environment (Mac and Linux versions on development).
- **Secure SQL database** notably increasing security and providing secure access for remote technical assistance.
- **Integration** with any PMS on the market (Opera, Prestige, etc.), and with room management systems.
- **Uniquely coded** card encoding per installation or group of installations, limiting the use of cards that are not coded by the authorized devices.
- **Different levels of access** for different system users.
- **Scalable**: the platform gradually adjusts to the facilities, depending on the size of the access plan, the diversity of installed devices and user profiles. Users manage only those functionalities required in their facilities, allowing them to optimise their daily work.



OS ACCESS profiles

Ad-Hoc

Starting from a minimum, essential basis for access management operations, **OS ACCESS** allows modules to be added or removed **according to the specific requirements of certain business models** with very particular access control needs.

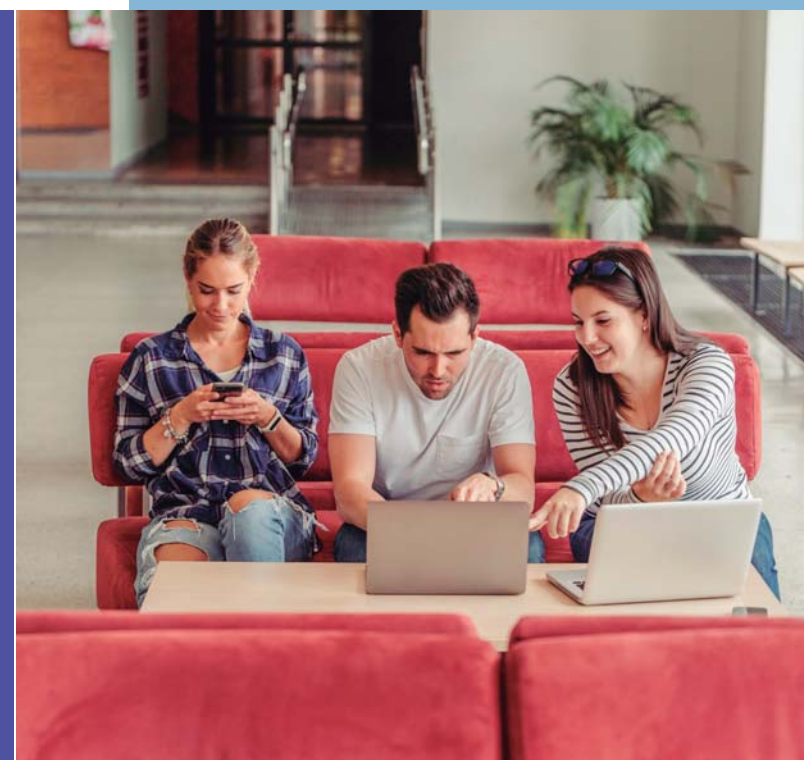


Hotels

Management of the access plan for employees, external personnel and guests; prioritising speed in managing the latter, given the high turnover and the numerous entries and exits every day.

The **Fast Check-In** function provides quick registration of guest to minimise waiting times at reception upon arrival.

Audit lists, battery level query and locking, as well as other functions, are managed from reception and the administrator's mobile phone.

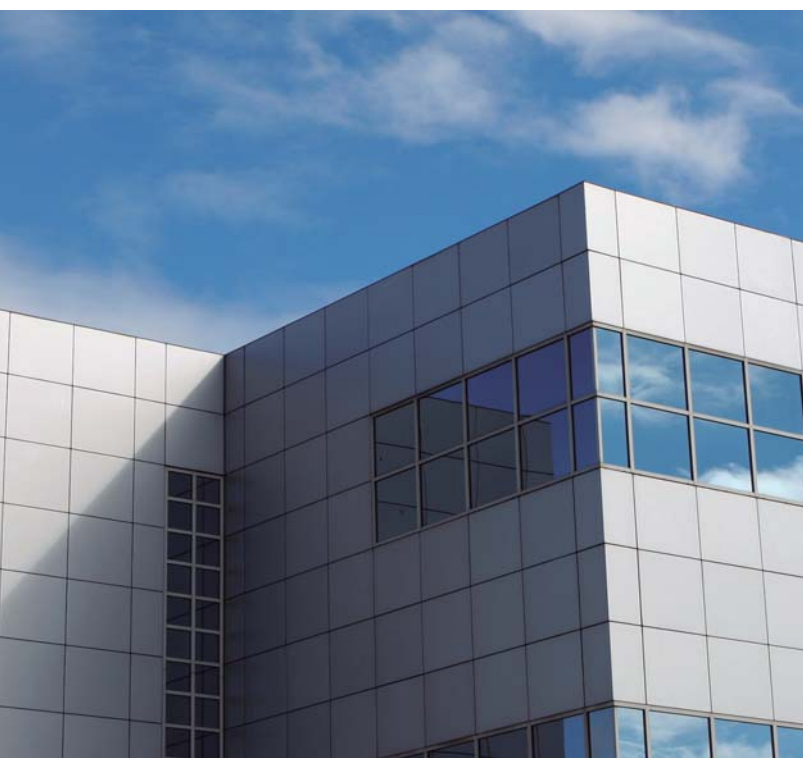


Residences

There are two different profiles in residences: Firstly, for internal or external workers who are managed similarly to any other work environment; secondly, for the residents themselves, who are generally long-stay users, with different requirements to those of office workers or tourists in guest houses.

OS ACCESS provides centralised information for all devices: their status (open/closed), battery level, access/event auditing of the locks and access controls.

To help in the control of residents in nursing homes, **OS ACCESS** provides a daily report of openings for the rooms and for other devices.



Offices

An access plan for offices and work environments requires additional functionalities to the access control itself, which is more typical of human resources than of a security plan.

Employees are divided into profiles to assign common access permissions. When the latter are modified, **all employees with that profile are updated at the same time.**

The movement of workers and visitors is managed centrally in **OS ACCESS** by establishing restricted access, according to working hours and holidays, or by movement sensors recording entry and exit.



Holiday Apartments

There are two different operating and access management types for tourist apartments: for those concentrated in self-contained buildings, which require management similar to that of a hotel; and for consisting of a high number of apartments scattered over different buildings, cities or provinces.

The online connectivity of **OMNITEC OS ACCESS** devices provides access management for both business models, from a single point with full and immediate control of credentials.

The incorporation of the **OMNITEC Gateway** into the hotel infrastructure converts Bluetooth electronic locks into online devices.

Having an online connection via WiFi, ethernet or 4G, the Bluetooth locks, safes, cylinders, access controls, etc. **transfer all recorded events to the Cloud and can be managed remotely.**



ON-LINE features

- Audit trail
- Remote opening from Front-Desk or via administrator smartphone
- Battery level control
- Access credential management
- Date / Time update
- Opening alerts



The **OMNITEC UpKey** app works in addition to the **OS ACCESS** software in access management.

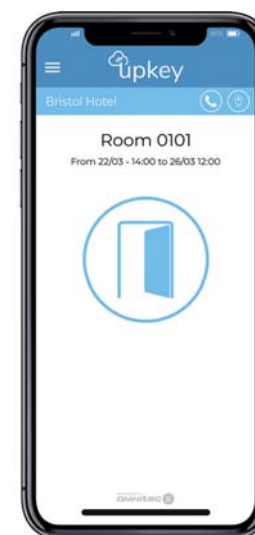
UpKey turns your Smartphone into an access key, a programmer command for installation and maintenance, and a remote integrated management platform for the access plan.

The combination of **OS ACCESS** software, **UpKey** app and Gateways gives a **multitude of possibilities in managing the access plan**, both in person and remotely, and provides an immediate response under any circumstances.

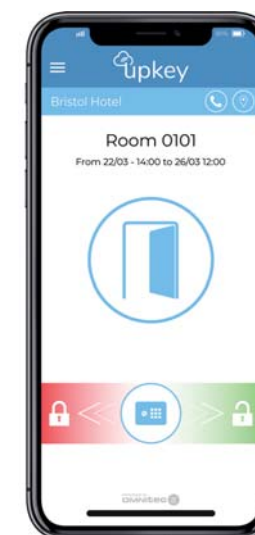
absolute control and management

For safer access management, **UpKey** works under 3 user profiles:

- **User:** You can access to the stay, garage, locker, etc. or open the safe with your Smartphone, after receiving the corresponding eKeys.
- **Employee:** You have access credentials for you to open and perform daily maintenance on all devices for which you have active credentials.
Once the commissioning of the facility is complete, control of locks, access control and safes are transferred to the administrator.
- **Administrator:** For full control of the access plan; controls and manages all devices and access credentials for the entire facility, for both employees and users.



door



door & safe



employee options



administrator options



Rent&Pass Pass brings simplicity, convenience and security, both for the owner and guest, with online management.

The **Rent&Pass** system manages access permission to the house, or room, in the periods rented. Similarly, if the guest requires a cleaning or maintenance service when leaving, the owner can grant permission for a certain time slot to the person performing the task.

APP as Management Software

owner



CONFIRMED BOOKING

Generates and sends the electronic key and the access code for the guest.



STAY

Can cancel any key and/or code at any time.
Entry report.



END OF STAY

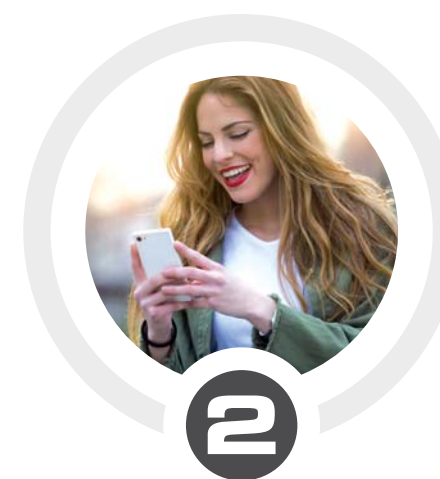
Sending electronic key and/or code to maintenance, cleaning or laundry personnel, for example.

guest



CONFIRMED BOOKING

Receives the key and code on their smartphone.



STAY

Can open the main door to the building and the apartment, or room, with a code or with their smartphone.



END OF STAY

The key and code expire on the date and time stipulated in their rental conditions.

security and control without travelling

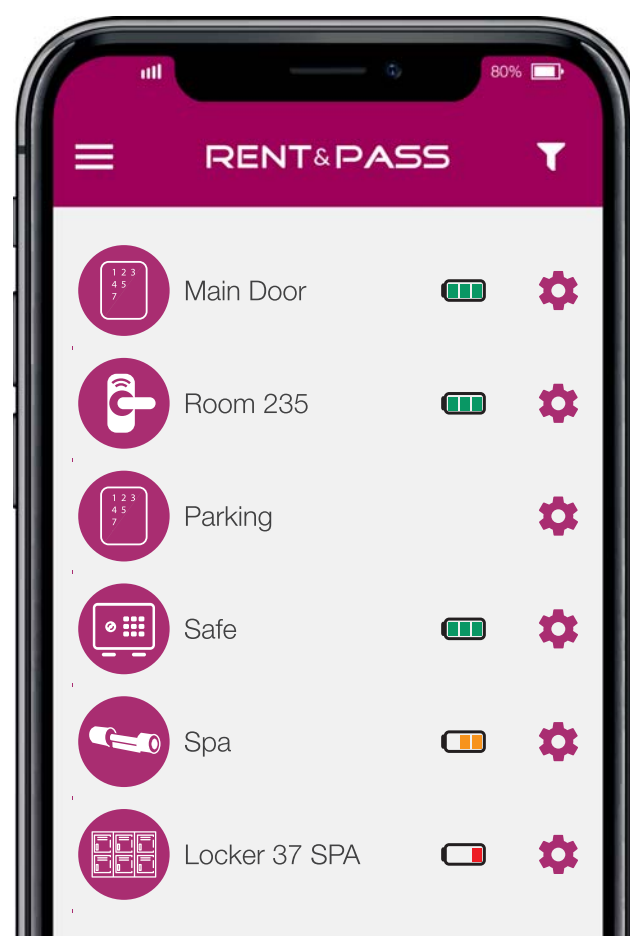
The **Rent&Pass** system allows the owner to send the guest electronic keys and codes to access the apartment, main door to the building, garage and any other area that can be controlled with a wall access system. The keys and codes can be cancelled and deleted at any time from the administrator platform.



RENT & PASS app

The **OMNITEC Rent&Pass** app has been developed for access management in all establishments that do not require server software such as **Os Access** or **SmartPass**, owing to their size.

- ELECTRONIC KEY**
Sending electronic keys via an app anywhere and anytime
- NUMERICAL ACCESS CODE**
Opening via numerical code without installing an app
- REAL-TIME MANAGEMENT**
Remote cancellation, blocking and deleting keys sent at any time
- AUDITABLE ACCESS**
Access logging for each lock and user
- ACCESS CODE MANAGEMENT**
Code with custom properties, it can be deleted at any time
3XAX2
5BA5B
2A2A2
85BG9
- ALERT FUNCTION**
Notification of actions in real time, security and protection



Small hotels, hotels without a 24-hour Reception, rural tourism accommodation, offices, coworking, etc. You will find the management and maintenance tool in **Rent&Pass** that best suits your business; offering remote management from a Smartphone or tablet.



Rent & Pass PRO

Rent&Pass has a **PRO** version, developed for all those owners who want to carry out more advanced management in their establishments.

In addition to all the normal **Rent&Pass** functions, the **PRO** version incorporates:

- **Check-In:** For the registration of users/guests, with start/end times and dates, and a **rapid assignment of devices for which credentials are granted**.
- **Calendar:** Displays user credentials in a day/week calendar format with **direct access to Check-In to expedite management tasks**.
- **Staff:** For management of staff credentials. In addition to start/end times and date access management, staff can be given permanent access or **classified according to their different user profiles and roles**.

		MANAGEMENT			OPENING		
		OS ACCESS Upkey	Server SMARTPASS	RENT PASS	CARD 		CODE 
	EVO	•		•	•	•	
	SLIM	•	•	•	•	•	
	SLIM CODE	•	•	•	•	•	•
	GAUDI I FIT-IN	•	•	•	•	•	
	FLAT 2	•	•	•	•	•	•
	X-CLUSIVE		•		•		
	X-RP 2	•		•	•	•	
	MINI	•	•		•		
	ANTI-VANDALISM	•	•		•		
	INUP	•	•		•		
	DIGIT	•	•	•	•	•	•
	OPAK	•	•	•		•	
	LIFT	•	•	•	•	•	

The **quality** that ensures the **customer satisfaction**

International Experience



www.omnitecsystems.com