



EZ SEAL

CUSTOMER REPAIR PROGRAM



CUSTOMER REPAIR PROGRAM

22806 COMMERCIAL LANE TOMBALL, TEXAS 77375
WWW.EPITEXAS.COM

EZ-CRP-03-17



EPI Valves Texas, LLC
22806 Commercial Lane
Tomball, Texas 77375

EPI VALVES TEXAS, LLC

A COMPANY SNAPSHOT

EPI Valves Texas was incorporated in the State of Texas, July 2011. We have been steadily increasing our business and customer base each year since. Our aim is to be easy to work with, extremely responsive, and quick to solve any issue with any facet of the business.

We implemented an API Q1 compliant quality management system in early 2014 and since received our API 6D Certificate in January 2015. We constantly monitor our key performance indicators regarding on-time delivery, scrap rates, rework, and customer satisfaction. Our current customer satisfaction rate is 100%. This number is based on customer surveys sent with each order we ship.

Our customer base also has steadily increased since 2011. We like to believe it is due in part because we here at EPI Valves do the little things that other manufacturers' won't.

- We mark the seat dimensions on the valve body for quick referencing and easy recognition.
- We test each and every valve that comes into our facility.
- We welcome third-party or customer witnesses.
- We provide a complete quality document package with test reports and test charts at no additional charge.
- We perform complete dimensional "As Built," drawings..
- We follow up with each customer and order with a customer satisfaction survey.

EPI Valves Texas values your business and will work diligently and responsively to satisfy requirements.

Sincerely,

Bill Godare
Managing Member
EPI Valves Texas, LLC



VALVE REPAIR PROGRAM



EQUIPMENT TYPES WE REPAIR

Our E-Z SEAL Customer Repair Program includes many different types of valves & equipment. We specialize in the repair of Parallel Expanding Gate Valves, Slab Gate Valves, Rising Stem Ball Valves, Swing Check Valves, Expanding Plug Valves, Trunnion Ball Valves, & much more...

- Complete Repair Service on All Types
- Upgrade to Current Materials Technology
- Check Bearing & Gear Operator Lubrication
- Functionally Check All Valves
- Check Alignment



NOW, WHY ARE WE DIFFERENT?



We do the “little things”

Lubricate Studs Prior to Torque
(4 Times Less Torque Required to Achieve Result)

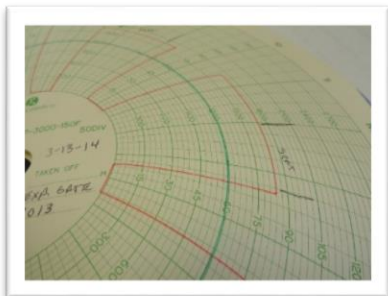
Replace *ALL* fittings & O-Rings to “USA” Standards
Hydrostatically Test *ALL* Valves in Compliance



FINISHING TOUCHES

When you request our repair services, we want you to know exactly what you’ve purchased. EPI Valves Texas will create a true & complete quality document package pertaining to the product(s) sent to our facility. And we provide this service at *NO ADDITIONAL CHARGE*. The following will be included within our document packages:

- Photograph Documentation
- Table of Contents
- Pressure Test Charts
- Pressure Test Reports
- Seat & Stem Seal Dimensions
- Material Test Reports (If Applicable)



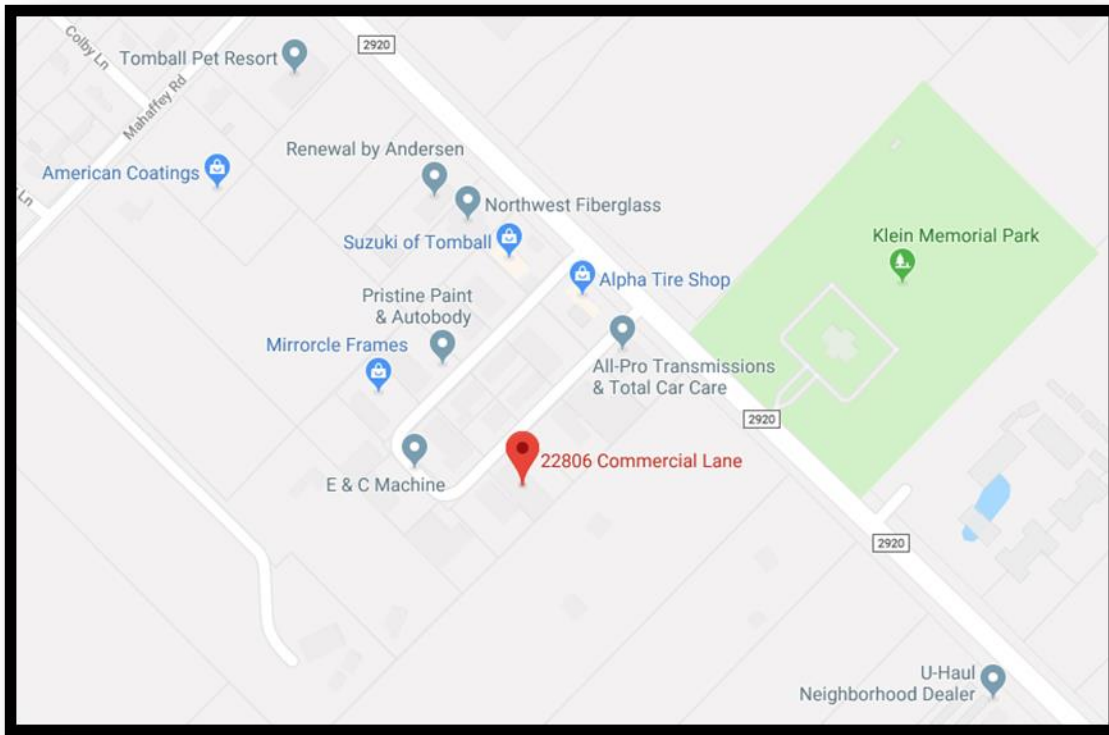


CONTACT US



WHERE YOU CAN FIND US

We are located on FM 2920 just Northwest of the Grand Parkway US 99 in Tomball, Texas. To reach our location from I-45, take Exit 70a 2920, to Tomball. Continue down FM 2920 for about 10 miles. We are on the left-hand side of 2920 @ 22806 Commercial Lane.



CONTACT INFORMATION

+1 (936) 697-5740 & +1 (713) 897-1649
22806 Commercial Lane Tomball, Texas 77375
Website Address www.epitexas.com

