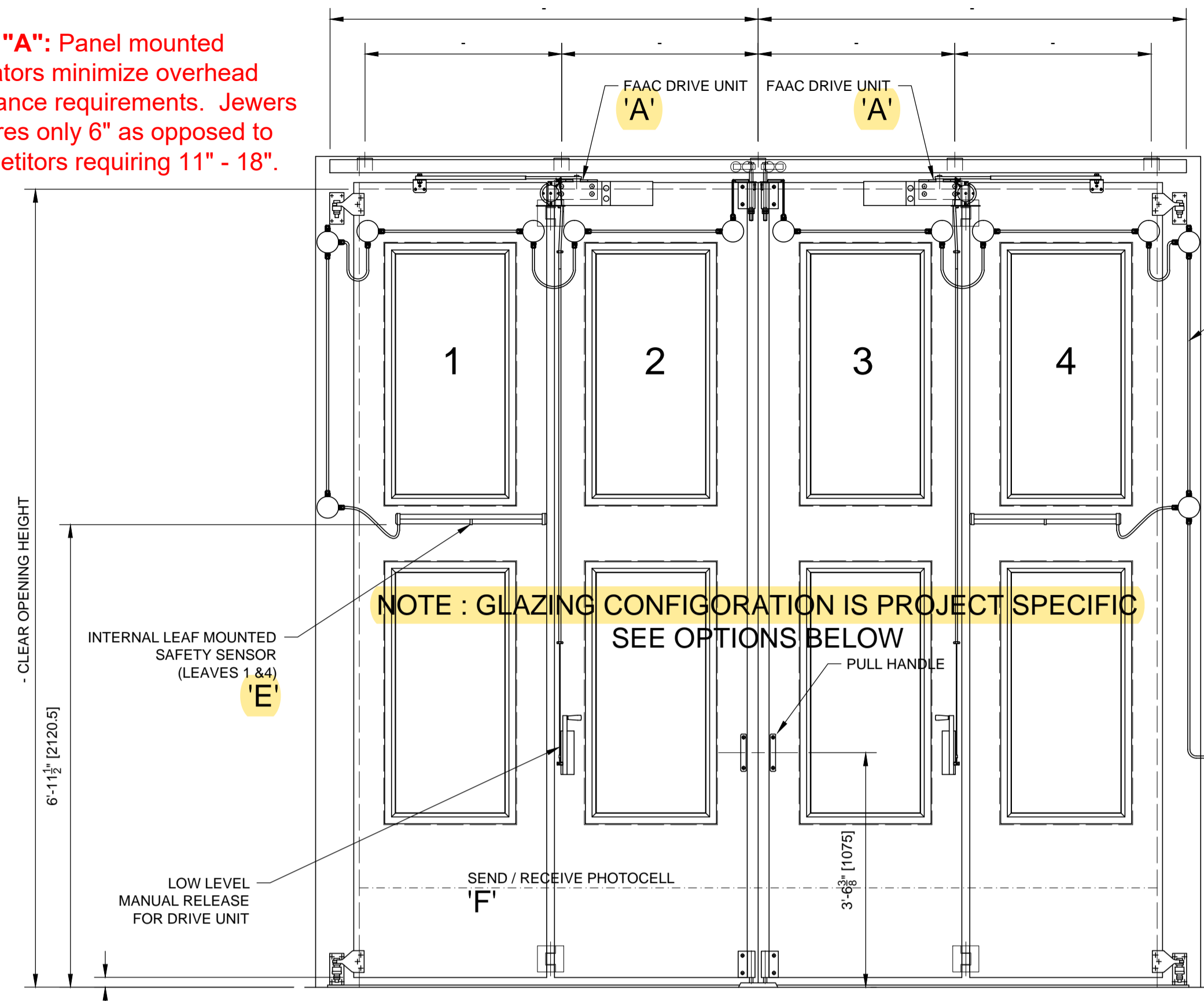


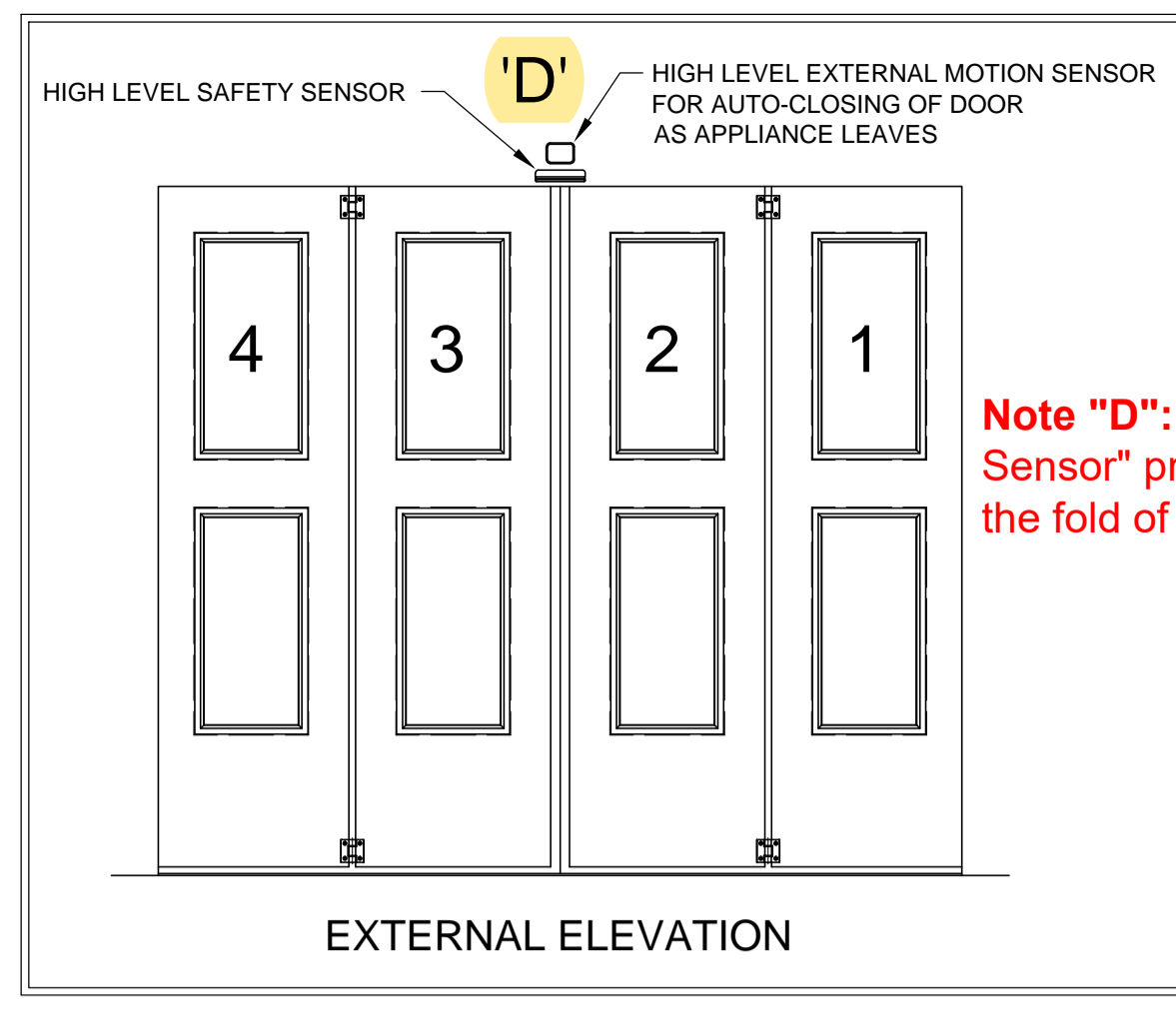
**SAMPLE: TYPICAL SWT E (or SWT EFG)**

**Note "A":** Panel mounted operators minimize overhead clearance requirements. Jewers requires only 6" as opposed to competitors requiring 11" - 18".

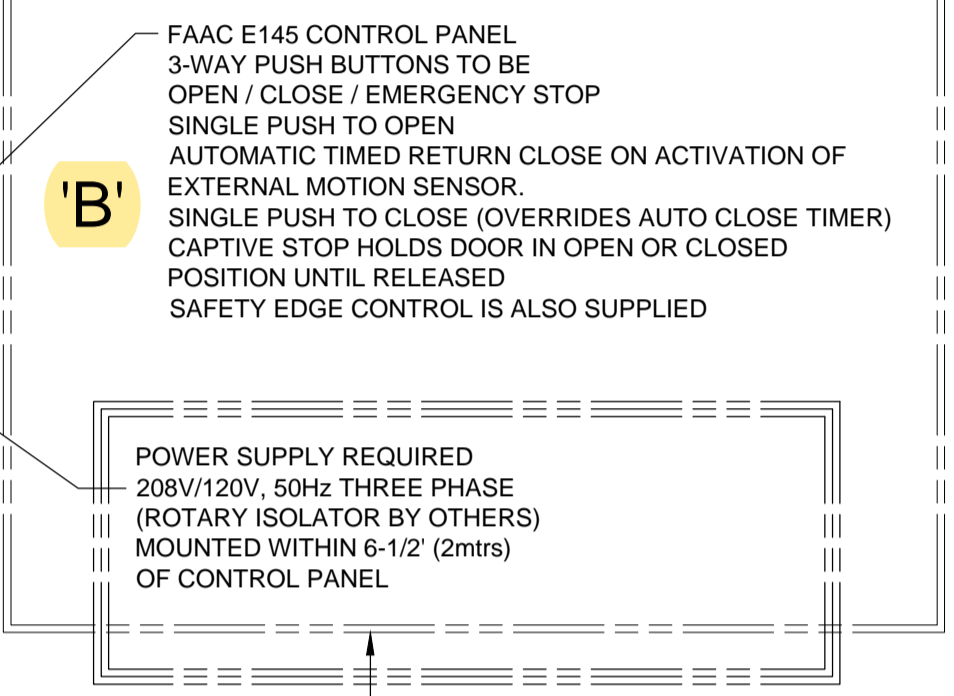


**NOTE : GLAZING CONFIGURATION IS PROJECT SPECIFIC SEE OPTIONS BELOW**

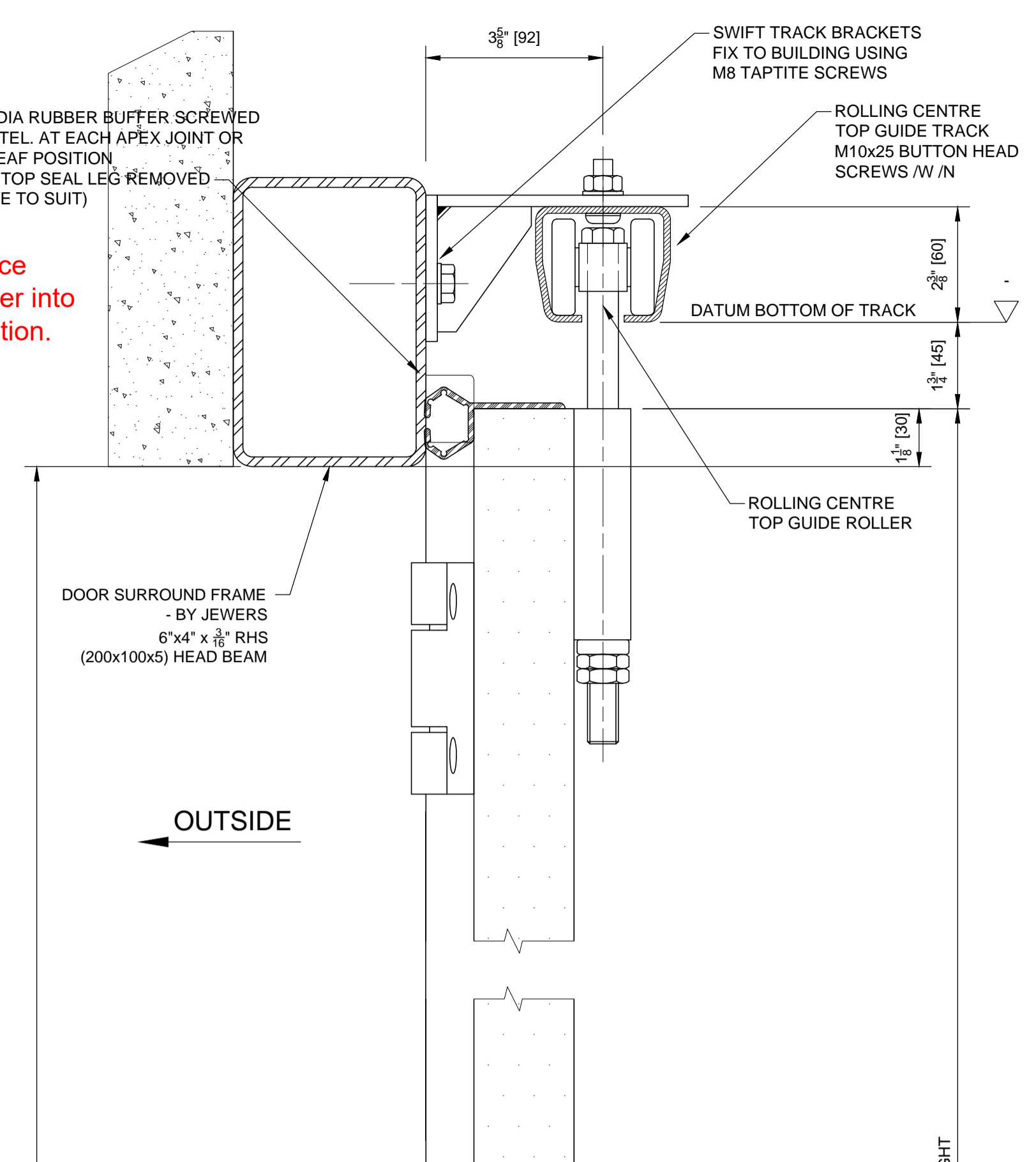
**Note "E":** Fold sensors prevent interface of user & jamb entrapment zone during operation of door. (See Scottsdale, AZ)



**Note "D":** The external "Presence Sensor" prevents interface of user into the fold of the door during operation.

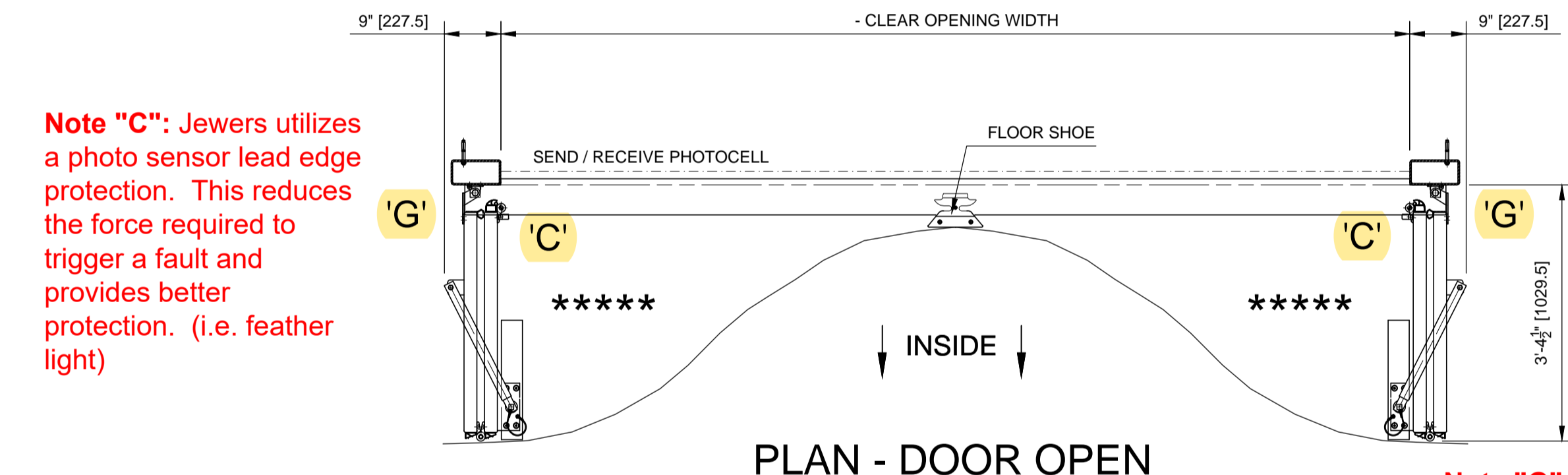


CONTROL PANEL AND POWER SUPPLY POSITION TO BE AGREED ON SITE. PUSH BUTTONS SHOULD BE POSITIONED SO OPERATOR HAS UNOBSTRUCTED VIEW OF OPENING AND DOOR.



- CLEAR OPENING HEIGHT

PANEL HEIGHT

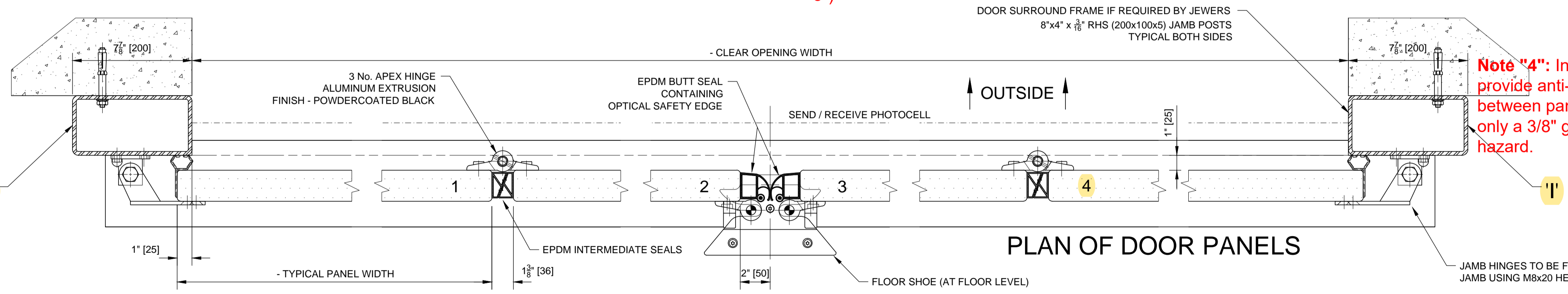


**Note "C":** Jewers utilizes a photo sensor lead edge protection. This reduces the force required to trigger a fault and provides better protection. (i.e. feather light)

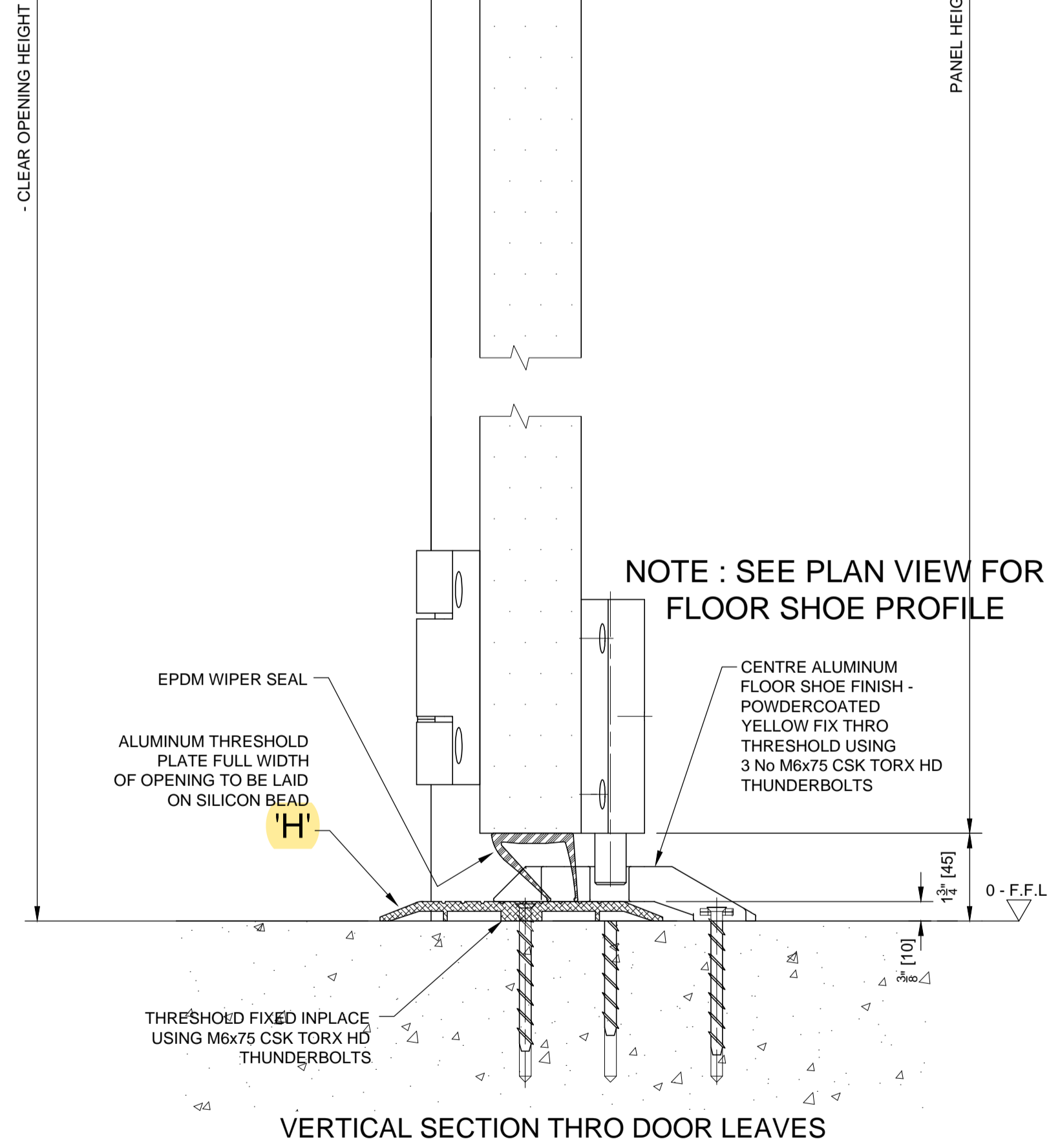
**Note "G":** Profile projection is less than competitors due to low profile jamb hinge. Minimizes impact of entrapment hazard. (4" vs. 8")

KEY	
A	LOW PROFILE OPERATORS (w/ ANTI-ENTRAPMENT)
B	FAAC E145 CONTROL PANEL (NEMA 4)
C	LEAD EDGE SENSOR
D	EXTERIOR PRESENCE SENSOR
E	TRAVEL PATH FOLD SENSOR
F	PHOTOCELL (AVAILABLE INTERIOR AND / OR EXTERIOR)
G	LOW PROFILE JAMB HINGE (2")
H	HIGH TRAFFIC 3/8" THRESHOLD
I	TUBULAR WALL PROFILE

NOTE: FINISHED FLOOR MUST BE WITHIN +/- 1/8" OF FFL (0000) ACROSS THE OPENING, AND THE INTERNAL FLOOR MUST BE FLUSH WITH, OR LOWER THAN FFL (0000) IN THE AREA SWEEP BY THE DOOR LEAVES AS MARKED BY \*\*\*\*\* IN ADJACENT PLAN VIEW



**Note "4":** Intermediate panel seals provide anti-pinch protection between panels. Competitors have only a 3/8" gap creating pinch hazard.



<b>NOTES</b>
STRUCTURE OF OPENING MUST BE SUITABLE TO ACCEPT FIXING BOLTS AND ADEQUATE TO TAKE WEIGHT OF DOOR. DOOR WEIGHT: - lbs EACH
<b>QUANTITY</b>
<b>FINISH</b>
EXTERNAL: 0.9mm GALV SHEET STEEL POWDERCOATED COLOUR - (RAL COLOUR T.B.A.) 30% GLOSS
INTERNAL: 0.9mm GALV SHEET STEEL POWDERCOATED COLOUR - (RAL COLOUR T.B.A.) 30% GLOSS

<b>WINDOWS</b>
<input type="checkbox"/> 8 600x1200 DOUBLE GLAZED VISION PANEL
<input type="checkbox"/> NR 400x600 D/G VISION PANEL
<input type="checkbox"/> NR 400x1200 D/G VISION PANEL
<input type="checkbox"/> NR 600x600 D/G VISION PANEL
<input type="checkbox"/> NR 600x1200 D/G VISION PANEL
<b>LOCKING - AT APEX HINGE JOINT</b>
<input type="checkbox"/> NONE - DRIVE HOLDS DOOR FIRM
<input type="checkbox"/> NR LEVER OPERATED FLOOR BOLT + INTERLOCK LEADING EDGE FLOOR LOCK
<input type="checkbox"/> FLOOR SHOE

<b>POWER OPERATION/SAFETY FEATURES</b>
<input type="checkbox"/> LEADING EDGE OPTICAL SAFETY EDGE
<input type="checkbox"/> SEND / RECEIVE PHOTOCELL TO EXTERNAL FRAME
<input type="checkbox"/> LOW LEVEL MANUAL RELEASE
<input type="checkbox"/> EXTERNAL HIGH LEVEL SAFETY SENSOR
<input type="checkbox"/> INTERNAL LEAF MOUNTED SAFETY SENSOR
<input type="checkbox"/> EXTERNAL HIGH LEVEL MOTION SENSOR (TO CLOSE DOORS)
<input type="checkbox"/> RADIO CONTROL - OPEN AND CLOSE THIS DOOR 1 x 1 CHANNEL TRANSMITTER

<b>NOTES:</b>
ALL DIMENSIONS IN BRACKETS IN mm
DOOR SURROUND FRAME - BY JEWERS TO BE FINISHED AS FOLLOWS PAINTED - BLACK RAL 9005
DOOR TO BE MECHANICALLY INSTALLED IN ACCORDANCE WITH THIS DRAWING AND INSTALLATION BOOKLET OSPMECH-8106-ISS002 / SWTMECH-8006-ISS004 / KNFMECH-8306-ISS002

**JEWERS**

The Property of this Drawing Sheet and Design is vested in Jewers Doors Ltd. It must not be reproduced in any way or passed to third parties without their written consent.

DRAWN	R.A.A.	DATE	09-19-2019
-------	--------	------	------------

Jewers US  
PO Box 16639  
Greensboro, NC 27416  
United States of America  
Tel: 888.610.5331  
Mob: 336.508.3662  
Email: info@jewersdoors.us  
Web: www.jewersdoors.us

<b>A</b>		FIRST ISSUE	
ISSUE	CHECKED	DATE	SIGNED
DRG TITLE		PROJECT REF	
GENERAL ARRANGEMENT SWIFT 2+2 LEAF ELECTRICALLY OPERATED BI-FOLDING DOOR		TYPICAL FIRE STATION USA APPARATUS BAY DOOR	
DRAWING NUMBER		SK-001	