



ROBERT MASSA & BRIAN T. BEST

PRESENT

A woman with long, light-colored hair is shown from the chest up, submerged in water. Her face is pressed against a transparent surface, likely a glass pane, with her hands splayed out on either side of her head. Her expression is one of intense distress or fear, with her eyes squeezed shut and her mouth slightly open. The water around her is a deep blue, and the lighting is dramatic, highlighting the texture of her hair and the wet surface of the glass.

A SECOND CHANCE TO DIE

A PROPOSAL FOR A SCI-FI FEATURE-LENGTH THRILLER



LOGLINE

THE INVENTOR OF A TIME MACHINE TRAVELS INTO THE FUTURE AND DISCOVERS THAT HIS YOUNG LAB ASSISTANT HAS BETRAYED HIM AND TAKEN CREDIT FOR HIS LIFE'S WORK.

A woman with long brown hair is looking out of a window at a night sky. She has a concerned or thoughtful expression. In the background, a crescent moon and a bright star are visible against a dark, teal-colored sky. The woman's hand is partially visible near her face.

THEME: CONSEQUENCE

WE TEND TO PURSUE OUR OBSESSION WITH THE TECHNOLOGICAL WONDERS WE CAN CREATE WITH COMPLETE OPTIMISM BUT OFTEN DISREGARD WARNINGS OF THE SERIOUS DANGERS THAT CAN ACCOMPANY THEM

SYNOPSIS



AFTER DECADES OF RESEARCH AND CONSTRUCTION, **SIMON NELSON** HAS FINALLY SUCCEEDED IN CREATING A FUNCTIONING TIME MACHINE WITH THE HELP OF **AMANDA**, HIS YOUNG LAB ASSISTANT



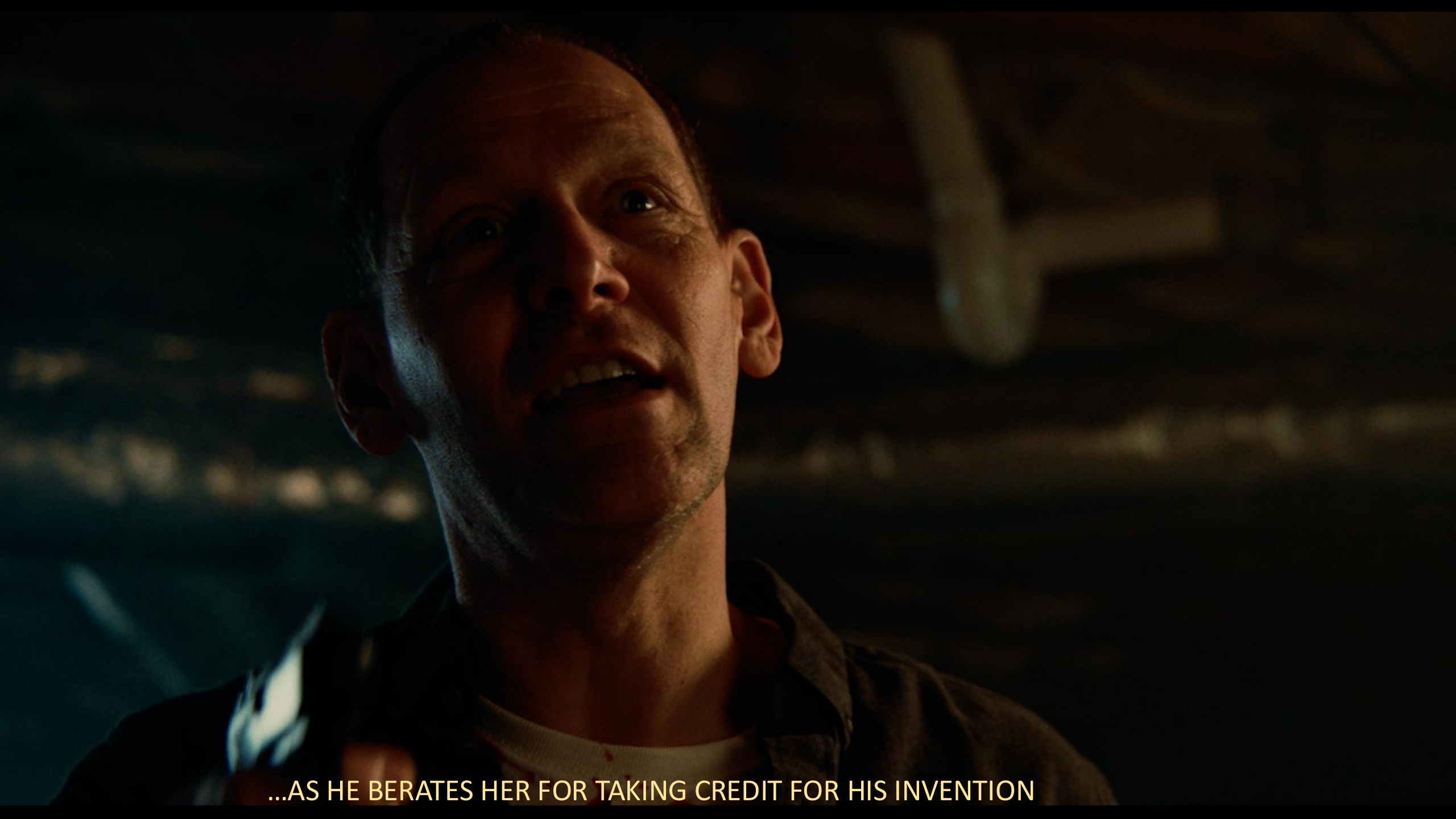
FOR THE FIRST TEST, SIMON DECIDES TO PLAY IT SAFE AND ONLY TRAVEL TWO YEARS INTO THE FUTURE



HE RETURNS SECONDS LATER AND PULLS A GUN ON AMANDA



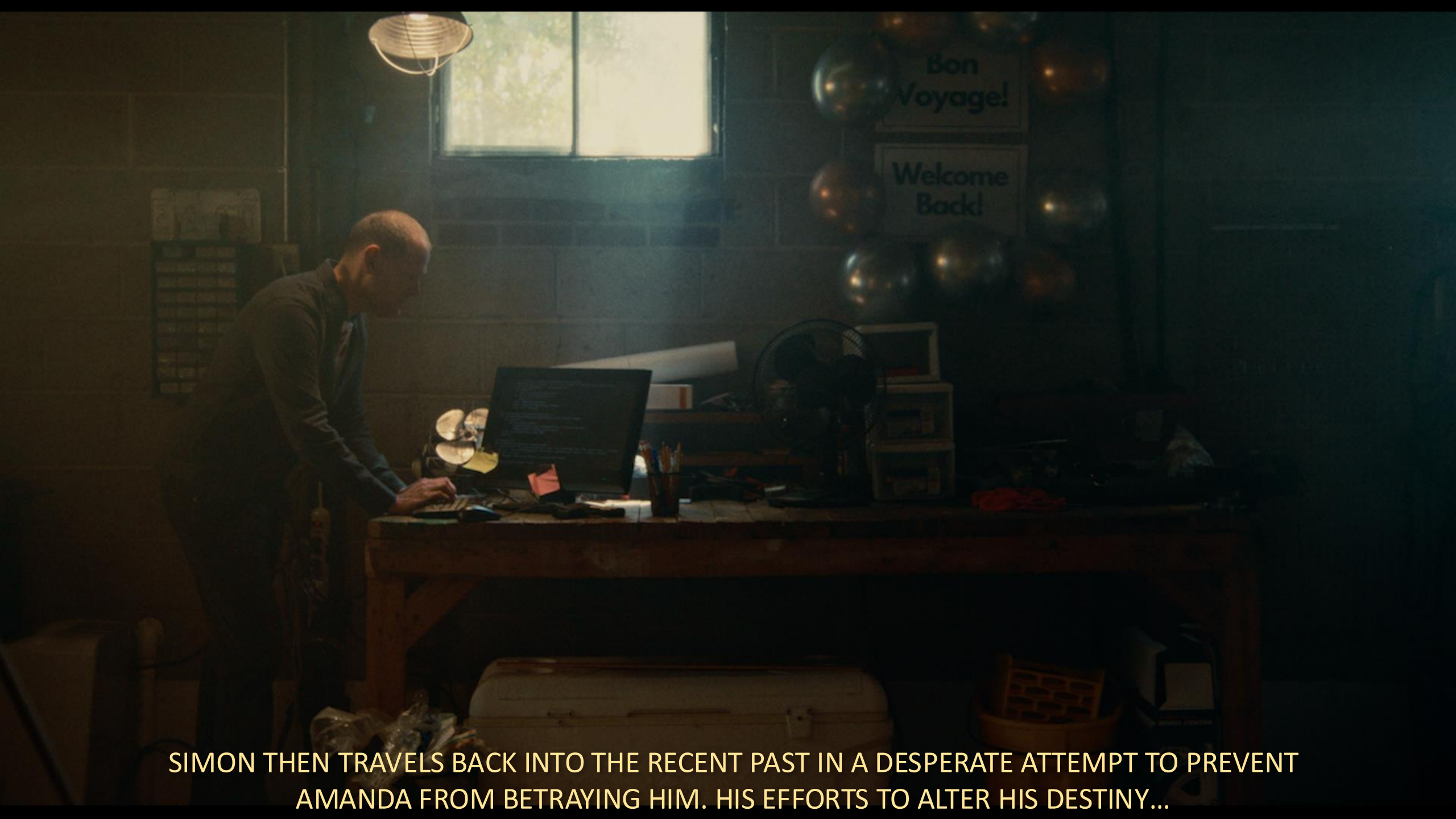
SHE BACKS AWAY, SHOCKED AND CONFUSED...



...AS HE BERATES HER FOR TAKING CREDIT FOR HIS INVENTION



HE FORCES HER INTO THE TIME MACHINE AND SENDS HER FAR AWAY INTO AN UNKNOWN FUTURE



SIMON THEN TRAVELS BACK INTO THE RECENT PAST IN A DESPERATE ATTEMPT TO PREVENT AMANDA FROM BETRAYING HIM. HIS EFFORTS TO ALTER HIS DESTINY...



...ONLY SUCCEED IN PRODUCING UNINTENDED DISASTEROUS CONSEQUENCES

The background is a deep black space filled with a multitude of stars of varying sizes and colors, including white, blue, and yellow. The stars are scattered across the entire frame, creating a sense of vastness and depth. In the center of the image, the word "CHARACTERS" is written in a bold, yellow, sans-serif font. The text is slightly larger than the surrounding stars, making it a prominent focal point.

CHARACTERS



AMANDA

A HARDWORKING GRAUDATE ENGINEERING STUDENT AND DEDICATED APPRENTICE. SHE STRONGLY BELIEVES IN SIMON AND HIS DREAM AND THINKS THAT HER CONTRIBUTIONS WILL BE APPRECIATED AND REWARDED.



SIMON

AN ENTHUSIASTIC PHYSICIST DETERMINED TO PROVE TIME TRAVEL IS POSSIBLE AND GAIN RECONGNITION AND ADMIRATION IN THE SCIENTIFIC COMMUNITY. THE ADDITION OF A YOUNG ASSISTANT, AMANDA, PROVIDES HIM WITH COMPLEX COMPUTER TECHNOLOGY AND AN ALMOST FAMILIAL BOND. IN HIS HASTE, HOWEVER, HE FAILS TO THOROUGHLY CONSIDER ALL OF THE POSSIBLE CONSEQUENCES OF HIS ACTIONS.

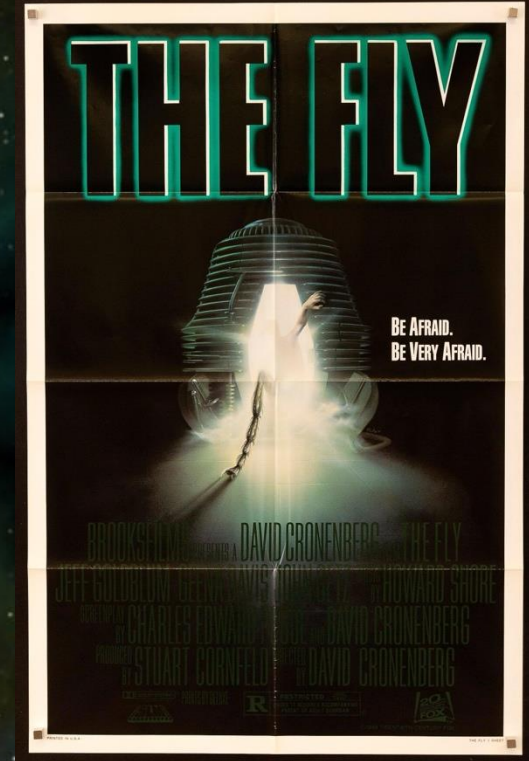
COMPARISONS



BLADE RUNNER (1982)

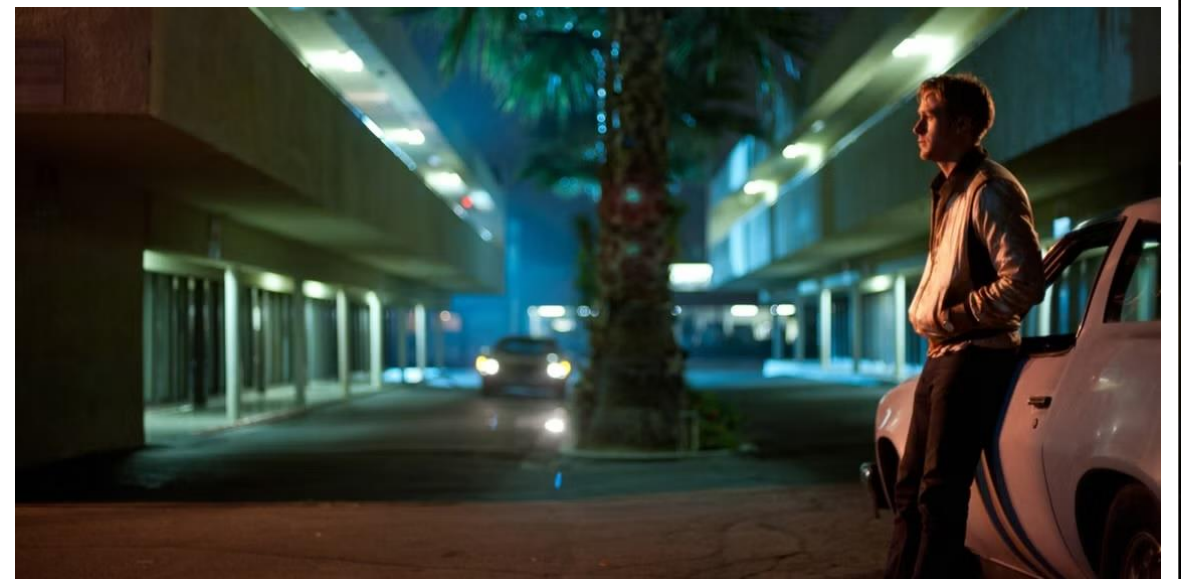


THE TERMINATOR (1984)



THE FLY (1986)

THE LOOK



MODERN FILM NOIR

WRITER'S STATEMENT

WHEN READING A BOOK OR WATCHING A FILM, I AM THRILLED WHEN SOMETHING HAPPENS THAT CATCHES ME COMPLETELY OFF GUARD. NOT JUST A TWIST, BUT SOMETHING I NEVER IMAGINED. THAT IS WHAT I STRIVE TO ACCOMPLISH IN THE SCRIPTS I WRITE. WHETHER THEY ARE THRILLERS, CRIME DRAMAS, OR COMEDIES, I STRIVE TO CREATE SOMETHING THAT REALLY TOYS WITH THE VIEWER'S EXPECTATIONS AND GIVES THEM MUCH MORE THAN EXPECTED.

DIRECTOR'S STATEMENT

I WANT TO SEE STORIES BASED ON REALISTIC SCENARIOS WITH RELATABLE CHARACTERS AND
THOUGHT-PROVOKING ENDINGS. UNFORTUNATELY, IT SEEMS SUCH FILMS ARE
INCREASINGLY RARE. WITH *SECOND CHANCE TO DIE* I INTEND TO PRESENT TENSE AND FRIGHTENING
SITUATIONS THAT FEEL REAL AND THREATENING WITH UNPREDICTABLE CONSEQUENCES...
ALL SET IN A NEAR FUTURE THAT VIEWERS WILL STILL BE ABLE TO IDENTIFY WITH.



PLEASE HELP US FINANCIALLY TO MAKE THIS DREAM A REALITY

A woman with long blonde hair is shown from the chest up, looking directly at the camera with a distressed expression. Her hands are pressed against a glass surface, with fingers spread. The background is a blurred blue and white pattern, possibly water or a window. The overall mood is one of desperation or fear.

A SECOND CHANCE TO DIE

[TAKE A PEEK](#)