

Montclair State as a LEED Community

montclair.edu/facilities/2020/06/15/montclair-state-as-a-leed-community

Facilities News

June 15, 2020

Posted in: [Sustainability](#)



The framework provided by LEED for Cities and Communities credibly tracks progress toward overall sustainability objectives and allows for comparison by and among communities around the world. The platform serves cities and communities of all shapes and sizes and at all phases of their evolution. Participants can be public or privately managed, new or rapidly developing places, mature or fully built-out places, neighborhoods or districts, counties or even small states or countries. [Learn more.](#)

Anyone in Facilities can tell you that Montclair State's campus operates like a small city. For that reason, we wanted to measure our impact as a community.

We registered as a LEED Community in the [Arc Performance Platform](#) and began collecting and inputting data in the following areas to calculate a score out of 110 total possible points. [Check out our score!](#)

- **Energy**
 - Greenhouse emissions per capita
- **Water**
 - Domestic water consumption per capita
- **Waste**
 - Municipal solid waste diversion rate from landfill
 - Municipal solid waste generated per year per capita
- **Transportation**
 - Vehicle miles traveled per day per capita
- **Human Experience**
 - Health & Safety: Median air quality index
 - Health & Safety: Air quality days unsafe for sensitive groups (days/year)
 - Health & Safety: Violent crime (per year, per capita)
 - Education: Population with at least a high school diploma (%)
 - Education: Population with at least a Bachelor's degree (%)
 - Equitability: Gini coefficient (for income distribution)
 - Equitability: Median gross rent as (%) of household income
 - Prosperity: Median household income
 - Prosperity: Unemployment rate

Now that the data prerequisites have been met, we will continue to work on the required documentation and policies which must be submitted if we choose to pursue certification.

Learn more about [Sustainability in University Facilities](#).

Sustainable Facilities

 montclair.edu/facilities/sustainability

Facilities has been involved in sustainable efforts since the 1940s, when our first steam generation plant went into operation on campus. We will continue to encourage and develop responsible and responsive practices that will foster positive behaviors and attitudes towards environmental stewardship for the sustainability of both the present and future generations.



Did you know?

Montclair State became the first educational institution in the nation to sign a Memorandum of Understanding (MOU) with the Environmental Protection Agency (EPA) in 2009; committing to utilize the latest green technologies and practices on its 246-acre campus.

[Learn more](#)

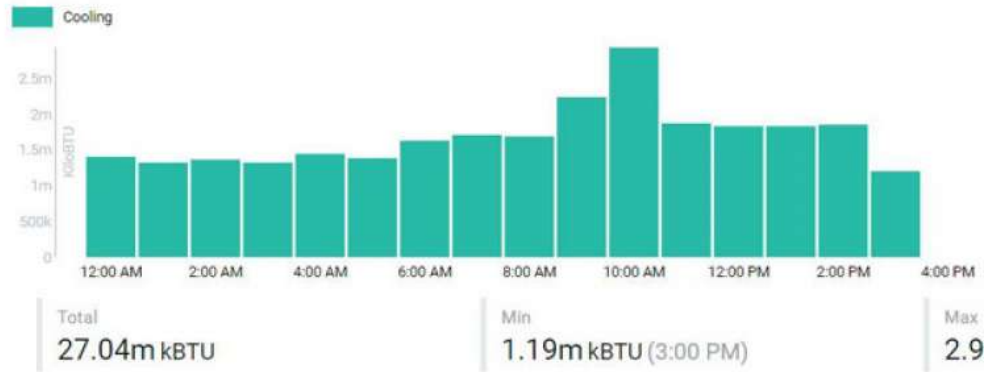
How does Facilities make campus more sustainable?



We Produce Our Own Energy.



Cooling Use / Today



Cooling Use / Last 7 days



Introduction



Electricity



Water



Natural Gas



Steam



Cooling



Green Tips



Weather

We Monitor Our Usage



We Build Green



We Offer Transit Options



We Conserve Water



We Recycle

Additional Resources

Need more information about sustainability in higher education? We can help!

Montclair State is a member of the Association for the Advancement of Sustainability in Higher Education (AASHE). All campus community members are eligible to sign-up for a free account which will allow them to access AASHE's resource hub and communities.