

2020 Licking Summer Camps Branson Inclusive Program

Minimum 3 Nights in one of our 5 motels
Minimum 2 fun/meal packages equals:
FREE DAY AT FRITZ'S ADVENTURE

**Build Your Own Three, Four or
Five-Day Experience**

Sample Five Day Agenda

Day Before Camp **FREE**

2:00-6:00 Fritz's Adventure Experience
6:00 Dinner – On Your Own

First Day of Camp

9:00-4:00 Pool Play Games
6:30-9:30 Stampede Dinner Show (\$40)

2nd Day of Camp

9:00-4:00 Pool Play Games
6:00 Dinner - Golden Corral
7:00 Rick Thomas Mansion of Illusion (\$40)

3rd Day of Camp

9:00-Noon Pool Play Games
Noon-4:00 Tournament
6:00 Hughes Family Dinner/Show (\$40)

Day After Camp

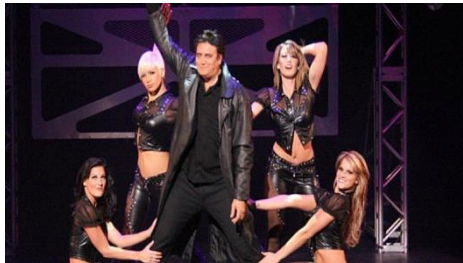
10:00-???? White Water
Dinner: Golden Corral (\$40)
????? Head Home

Four Nights in motel: average \$64

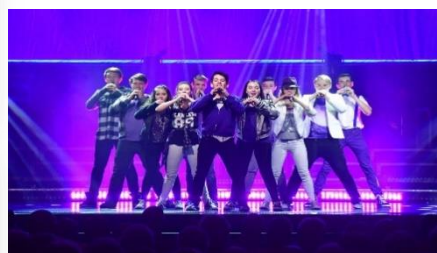
Entry Fee divided by 10 players per team: \$39

The above five-day agenda will cost your athletes \$263. There will be slight variances, up or down, depending on which motel you stay in and how many players you have on a team. I have used an average to calculate. If you paid list price on admissions and meals only, the cost would be \$278.55. It is as if your entry fee and motel are free.

This is a maximum agenda for the team looking for the maximum experience. Days and activities can be adjusted to fit you needs and budget.



MOTEL OPTIONS



Register on-line
www.lickingcamps.com



ALA-CARTE OPTIONS

- Choose only motels (5 choices)
- Choose only food/entertainment (4 Options, \$40)

Branson's Fritz's Adventure

Ultimate Team Bonding Experience

A \$35
Value
Free

A \$35
Value
FREE

..., Ropes Course, Wall Climbing, Underground Tunnels, Laser Interactive Games, Team Building Activities, Tree Houses, Slides, Walls, Container Maze, Skyfall – all in an 80,000 Sq. Foot Indoor Center

A Full Day of Fun The Day Before Camp—FREE!



2020 LICKING SUMMER CAMPS BRANSON INCLUSIVE PROGRAM COST SAVING AND HASSLE-FREE FUN, MEALS AND LODGING

Entertainment/Meal
Option 1 \$40

Entertainment/Meal
Option 2 \$40

Entertainment/Meal
Option 3 \$40

Entertainment/Meal
Option 4 \$40



All day admission to White Water Park, a Branson legend for fun, All you can eat Golden Corral Dinner Buffet and drink Together a **\$60 value**



One admission to one of the strips most popular shows. All you can eat Golden Corral Dinner Buffet and drink Together a **\$60 value**

The Hughes Music Show is "What's New in Branson!" Out of inventiveness of the Hughes Brothers comes the brilliantly produced, Hughes Music Show! A compilation of over 30 years of show biz experience, wrapped up into a single incredible experience. **A \$58 value**
Includes a 4 course dinner

Dolly Parton's Stampede is the perfect combination of world-class entertainment and fantastic four-course dining. Every Stampede ticket also includes pre-show entertainment where the entire team can enjoy the fun and excitement. **A \$58 Value**
Includes 4 course dinner

You also have the Ala Carte option of doing only motels

CHOOSE YOUR MOTEL

Per night – up to 4 in a room
free hot breakfast

\$65



\$82



\$75



\$65



\$65



FOR A FREE DAY AT FRITZ'S
a \$35 VALUE 1) stay 3 nights minimum in a camp motel 2) choose a minimum of 2 meal/entertainment options

Register on line

www.lickingcamps.com

Quick and Easy

Branson Inclusive Worksheet

Camp Dates: (June 10-12) (June 17-19) (July 9-11)

Coaches: Use this to plan your trip and to fill out the online registration. This does not need to be submitted to us.

If you have questions, please call Dave at 636-232-4688

You pay the motel direct but make all reservations through Licking Summer Camps

	A	B	C	D	E	F
Motel Options	Rate per Night	Check in Date	Check out Day	# of Nights	Rooms Reserved per night	Total Cost of Rooms (A X
Best Western	\$82					
Barrington	\$77					
Super 8	\$65					
Days Inn	\$65					
Super 8	\$65					

Barrington: 263 Shepard of the Hills Expy Branson, MO 65616

Days Inn and Suites (formerly the Regal): 3010 Green Mountain Dr Branson, MO 65616

Best Western Center Pointe Inn: 3215 W 76 Country Blvd Branson, MO 65616

Quality Inn: 2834 W 76 Country Blvd Branson, MO 65616

Super 8: 2490 Green Mountain Dr Branson, Missouri 65616-3802

Food/Entertainment Options	Cost	Day Before Camp	First Day of Camp	Second Day of Camp	Third Day of Camp	Day After Camp
Fritz's Adventure#	Free					
Dolly Parton Stampede*+	\$40					
Hughes Brothers*	\$40					
Whitewater/Golden Corral	\$40					
Rick Thomas/Golden Corral	\$40					

Day before camp only

*Dinner/Show

+8 pm show first night of camp only

Limitations

1. **Fritz's Adventure** is free if you stay a minimum of three nights in a camp sponsored motel (the five listed above) and a purchase of a minimum of two food/entertainment. You attend the day before camp, open 10 am to 8 pm
2. No Wednesday option for **Hughes Brothers**. **Dolly Parton Stampede** is the 8 pm show the first night of camp only
3. **Whitewater** is open 10 am to 6 pm for the June Camps and 10 am to 10 pm for the July camps. For the June camps, the day before camp and the day after camp would be a good option. We will make every attempt if you are going to Whitewater on a day when we have camp to have your games done by 3 pm. You will need to notify us when you register. Note on scheduling requests.