



# 900LS

**WHEEL BALANCING MACHINE**



WEIGHT: 176LBS / 80KG  
DIAMETER: 10" TO 26"  
WIDTH: 1.5" TO 22"



**[rpmtiremachines.com](http://rpmtiremachines.com)**

**100% Canadian Owned and Operated**



# 900LS

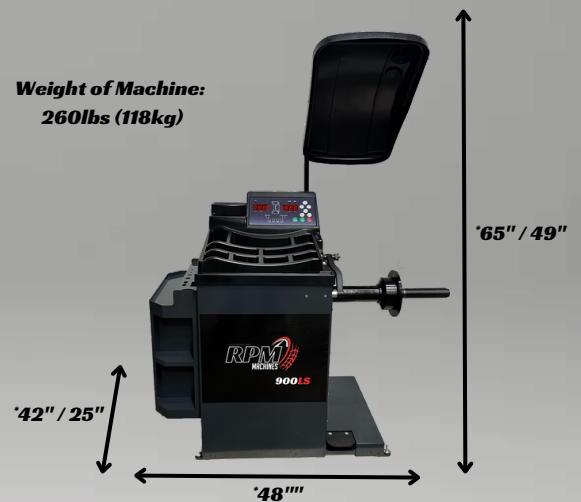
## WHEEL BALANCING MACHINE

### Specifications

<b>Operating Voltage:</b>	<b>110V, 1PH, 60Hz, 0.5kW</b>
<b>Balancing Speed</b>	<b>220 RPM</b>
<b>Accuracy</b>	<b>0.5g / 0.02oz</b>
<b>Spin Time</b>	<b>8 sec.</b>
<b>Shaft Diameter</b>	<b>40mm, 3p</b>
<b>Rim Width Range</b>	<b>1.5" - 22"</b>
<b>Rim Diameter Range</b>	<b>10" - 26"</b>
<b>Max. Wheel Diameter</b>	<b>41"</b>
<b>Max. Wheel Weight</b>	<b>176 lbs (80kg)</b>

### Dimensions (\*With Hood / Without Hood)

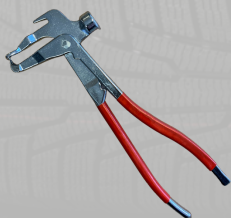
Weight of Machine:  
260lbs (118kg)



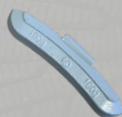
### Features

- **Enhanced Self-Calibration and Self-Diagnosis:** Improved algorithms ensure precise machine calibration and diagnostics.
- **Additional Programmable Mode:** Now offering 4 programmable modes for alloy rims and motorcycle wheels, providing more flexibility in the balancing process.
- **User-Friendly Control Panel:** Simplifies control and parameter adjustment.
- **Improved Durability and Longevity:** Constructed with high-quality components for extended service life.
- **Increased Accuracy:** Balancing accuracy improved to  $\pm 0.5$  grams for more precise results.
- **Dual Laser for Weight Placement:** Lasers positioned at 12 o'clock and 6 o'clock allow for accurate placement of balancing weights.
- **3D Data Arm:** Provides accurate measurements for wheel balancing.
- **Automatic Brake + Additional Manual Brake Pedal:** Enhances control and safety during operation.
- **Tool/Weight Tray Storage:** Convenient storage for tools and balancing weights.

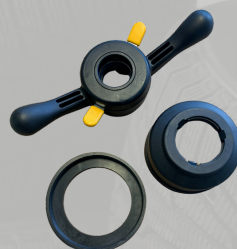
### Standard Equipment



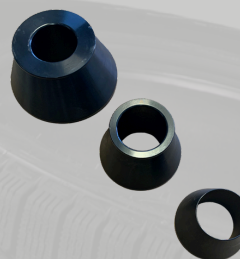
**Wheel Weight  
Hammer/Plier Tool**



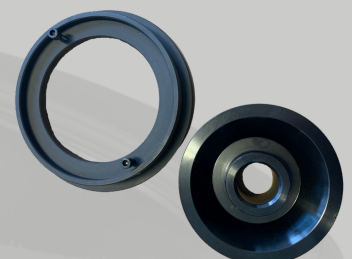
**Calibration  
Weight**



**Quick Release  
Nut Kit**



**3-Piece Cone Set  
42mm to 108mm**



**Light Truck Cone Kit  
90mm to 158mm**

**[rpmtiremachines.com](http://rpmtiremachines.com)**

**100% Canadian Owned and Operated**