



800S

WHEEL BALANCING MACHINE



WEIGHT: 143LBS / 65KG
DIAMETER: 10" TO 24"
WIDTH: 1.5" TO 20"



rpmtiremachines.com



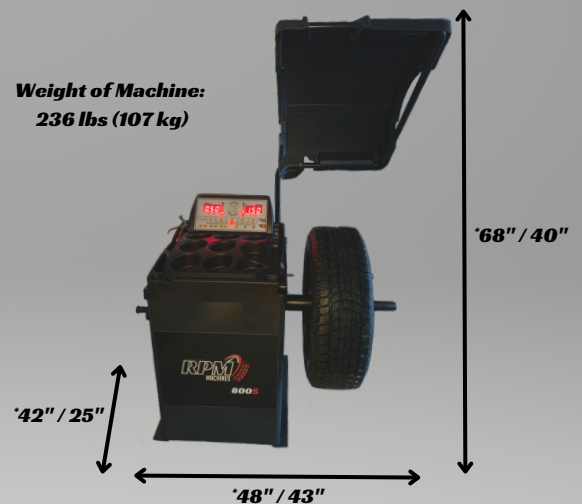
800S

WHEEL BALANCING MACHINE

Specifications

Operating Voltage	110V, 1PH, 60Hz, 0.3kW
Balancing Speed	200 RPM
Accuracy	2g / 0.07oz
Spin Time	10 sec.
Shaft Diameter	40mm, 3p
Rim Width Range	1.5" - 20"
Rim Diameter Range	10" - 24"
Max. Wheel Diameter	39"
Max. Wheel Weight	143 lbs (65 kg)

Dimensions (*With Hood / Without Hood)



Features

- **Digital wheel balancer with self-calibration and self-diagnosis**
- **Static mode plus 3 programming modes for alloy rims**
- **Compact body design, makes it easy to fit into any shop or mobile unit**
- **Easy to use and understand control & display panel ensures accurate and efficient balancing**
- **1 Year Parts Warranty**

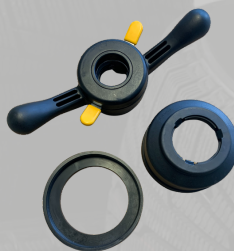
Standard Equipment



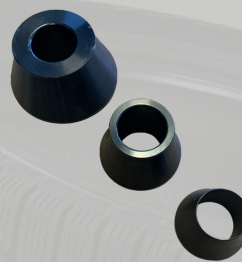
**Wheel Weight
Hammer/Plier Tool**



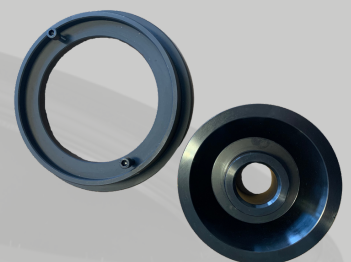
**Calibration
Weight**



**Quick Release
Nut Kit**



**3-Piece Cone Set
42mm to 108mm**



**Light Truck Cone Kit
90mm to 158mm**

rpmtiremachines.com