

**STAIRWELL
EVACUATION
ROUTES:**

A & B - Exit on first floor then left to Exterior door.

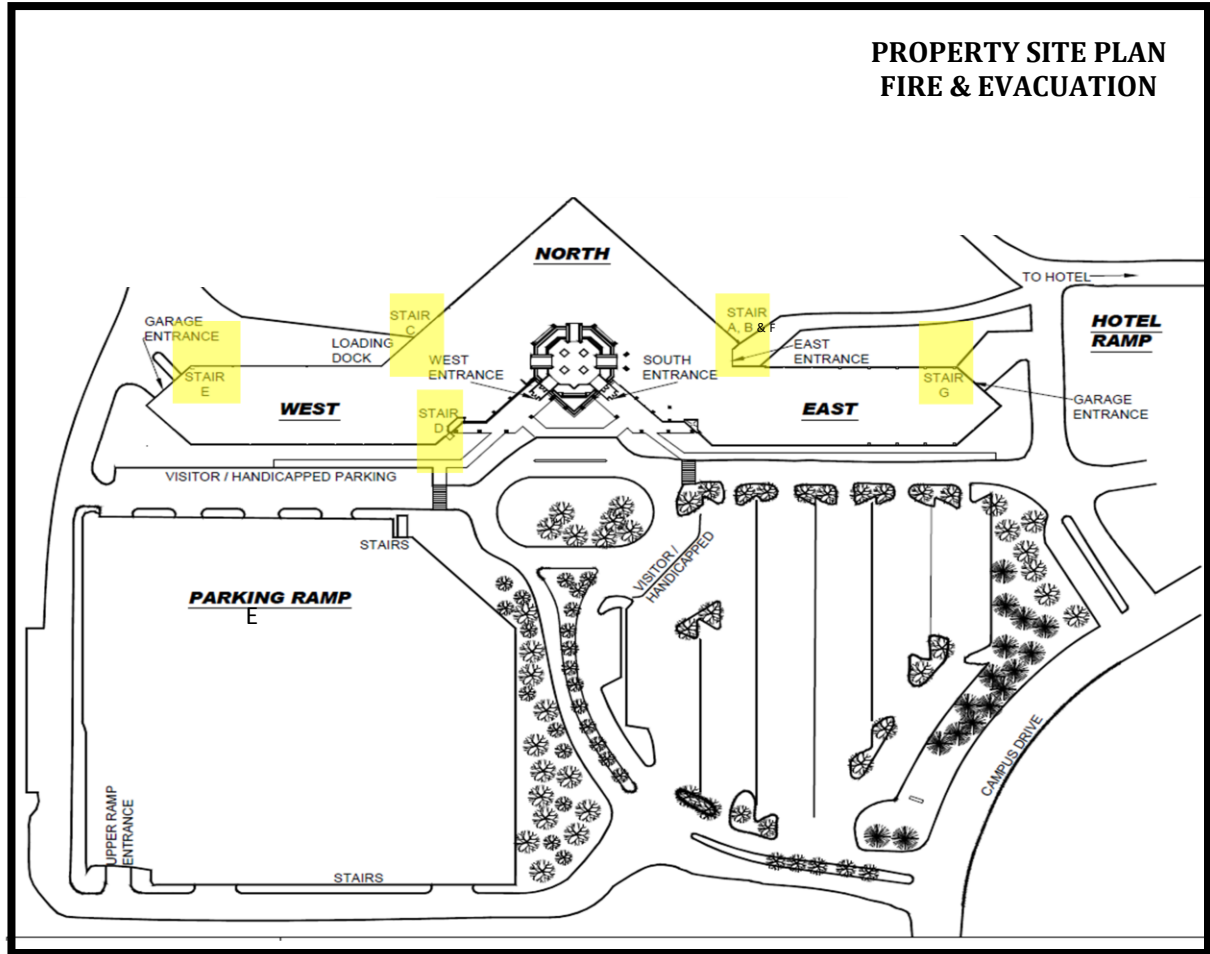
C - Take stairs down to Lower Level - Exits behind Loading Dock / Building.

D - Exits on first floor. Straight through the Emergency Exit door to front of building.

E - Take stairs down to lower level. - Exits next to West Garage doors.

F - Exit on first floor, then right to exit through double doors to back path.

G - Take stairs down to lower level. - Exits next to East Garage doors.



**SEVERE WEATHER
ACCESS TO LOWER LEVEL**

- A** - Exit into Lower Level Garage.
- B** - NO Lower Level Access
- C** - Exit into Lower Level Garage
- D** - NO Lower Level Access
- E** - Exits into Lower Level Garage.
- F** - NO Lower Level Access
- G** - Exit into Lower Level Garage

**LOWER LEVEL / PARKING GARAGE.
SEVERE WEATHER SHELTER**

