



• Sensitive & Safe

Enhanced functional safety based on highly sensitive torque sensor

• Talented & Skillful

Precise and versatile force control for remarkable performance

• Reliable & Innovative

Leading-edge control algorithm upon a robust software platform

• Intuitive & Simple

Ultra-intuitive usability like smart devices



Technical Specification

Arm

Performance

Tool Speed	1m/s
Repeatability	± 0.1mm
Temperature	5 ~ 45°C

Joint Movement (Range : ° / Speed : °/s)

	M0609	M1509	M1013	M0617
J1	±360 / 150	±360 / 150	±360 / 120	±360 / 100
J2	±360 / 150	±360 / 150	±360 / 120	±360 / 100
J3	±150 / 180	±150 / 180	±160 / 180	±165 / 150
J4	±360 / 225	±360 / 225	±360 / 225	±360 / 225
J5	±360 / 225	±360 / 225	±360 / 225	±360 / 225
J6	±360 / 225	±360 / 225	±360 / 225	±360 / 225

Other Features

Installation Position	Any (Floor / Ceiling / Wall)
Protection Rating	IP54
Digital I/O - Flange	6 In / 6 Out
I/O Power Supply	DC 24V / Max. 3A

Controller

Interfaces	Ethernet (TCP/IP) / RS232 / USB / GPIO / Wi-Fi
Fieldbus	Modbus TCP*
Dimensions	490 x 390 x 287mm
Weight	9kg
Protection Rating	IP20
I/O Port - Digital I/O	16 / 16
I/O Port - Analog I/O	2 / 2
I/O Power Supply	DC24V
Rated Supply Voltage	100 ~ 240(50~60Hz) VAC
Cable Length (Arm)	6.0m
Cable Length (TP)	4.5m

*Network gateway can be used for wider variety of communication methods

Teach Pendant

Protection Rating	IP20
Dimensions	264 x 218 x 42mm
Weight / Screen Size	0.8kg / 10.1inch



Doosan Robotics

Visit www.doosanrobotics.com for more details on Doosan Robotics
For inquiries, please contact marketing.robotics@doosan.com



Switch on the Future Doosan Robotics



The Cobot of The Future

The ideal automation partner for human-robot collaboration



► State-of-the-Art | Controller

- Top-notch control platform for perfect and reliable robot control
- Maximize performance of torque sensor through innovative and advanced motion control algorithm and robot language
- Providing the latest communications technology to ensure compatibility with other automation environment
- Icon-based Skills* for easy and simple teaching of complicated robot motions



Robust platform with Real-time OS and 1msec. communication speed of EtherCAT, ensuring perfect performance even in tough environments

* Ethernet, Fieldbus, Serial, Wifi, etc.



Easy and simple robot teaching by various types of Skills and Templates

► Human-Centered | Teach Pendant

- Capacitive touch and high resolution 1280x800 screen for friendly user experience
- Light-weight and ergonomic design enabling inherently-comfortable grip
- Ultra-intuitive usability by simple graphic-informative communication



Intuitive Card View to monitor all information on robot operation environment at a glance



Simple and easy robot teaching with icon drag-and-drops

► Best-In-Class | Manipulator

- 6-axis articulated robot with top-class force sensitivity and collision detection
- Outstanding safety and precise operation by 6 joint torque sensors
- Most optimal solution of collaborative robots with diversified work payload capacity and reach of product lineup
- Diversified product lineup enabling to select the optimal robot solution

M0609

6 kg payload capacity, 0.9 m reach radius
Optimized for quick and repetitive tasks in small spaces



Payload : 6 kg
Reach : 900 mm

M1509

Industry's largest payload capacity of 15 kg, 0.9 m reach radius
Suitable for handling heavy objects that pose risk to humans



Payload : 15 kg
Reach : 900 mm

M1013

10 kg payload capacity, 1.3 m reach radius
Versatile model adequate for all work processes



Payload : 10 kg
Reach : 1,300 mm

M0617

6 kg payload capacity, industry's largest reach radius of 1.7 m
Most efficient for handling more than two work processes or carrying out tasks to require long reach



Payload : 6 kg
Reach : 1,700 mm

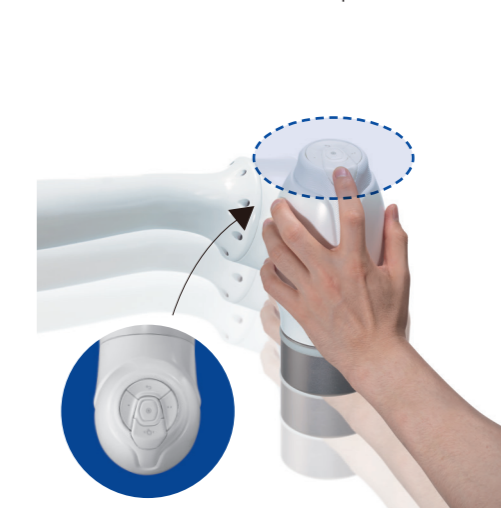


reddot award 2018
winner

► Value-Adding | Enhancers

Direct Control Unit-Cockpit

- Convenient solution for direct teaching without teach pendant
- 5 buttons for selecting various teaching modes and coordinate input



Mobile Base

- Mounted with robot and controller for easy movement and relocation
- Spacious and convenient storage available for tools and peripherals



Dress Pack

- Allows efficient operation by organizing various cables attached to end effectors
- Built-in bracket inside tube holder makes it easier to reinstall



※ Enhancers are optional items, not included in the basic robot system.

Stain-Resistant Model

- Enhanced anti-stain finish enabling easy maintenance against dirt and stain



※ Water Jacket option is available for prevention of moisture and stain