

HT MÜHENDİSLİK

ENGINEERING – MANUFACTURING – ASSEMBLY - CONSULTANCY

Company Capabilities

- ✓ HT Engineering was established in 2023 to evaluate its 16 years of industry experience. Our company, which has vast experience in Machine Design and Manufacturing, Product Design and Manufacturing, Mold Design, Fixture Design and Manufacturing, was established with a strong Engineering infrastructure.
- ✓ Apart from these studies, it can produce in the field of welded manufacturing and assembly. At the same time, with its solution partnership, Özkan Makine can also provide production support by expanding its production infrastructure with CNC machining centers, CNC lathes, gear manufacturing machines.
- ✓ The company is an engineering company and consists of experienced personnel, technicians and engineers. It has the theoretical and technical infrastructure capacity to produce solutions for projects in different sectors.



Company Introduction

Company Capabilities

QUALITY AND ASSURANCE

HT Engineering aims to be a solution partner that provides added value to companies by contributing to the companies it serves with its innovative engineering approach as well as manufacturing support, and by revealing the innovative aspects of the companies.

The manufactured products are processed according to the Technical Drawing, assembled and delivered with quality reports.



Measuring devices are regularly calibrated by accredited organizations.



CMM measurements can be made through our solution partners upon request.

Company Capabilities

DESIGN AND ANALYSIS CAPACITY

HT Engineering; has adopted customer satisfaction and staying loyal to delivery times as its service approach by meeting the machinery manufacturing needs of industrial sectors.



Company Capabilities

MACHINE CAPACITY

MACHINE PARK		
LATHE AND GEAR MACHINE	MILLING CENTER	WELDING PROCESSES
CNC Lathe: Ø400 mm	CNC Vertical Machining: 850 x 650 mm	TIG Welding Machine
Universal Gear Machine: Ø1500 mm	CNC Vertical Machining: 600x400 mm	MIG Welding Machine
Keyway Opening Machine		Electric Arc Welding Machine

Company Capabilities

MACHINE CAPACITY

600x400

CNC Vertical Machining Center



850x650

CNC Vertical Machining Center



Ø400 CNC Lathe



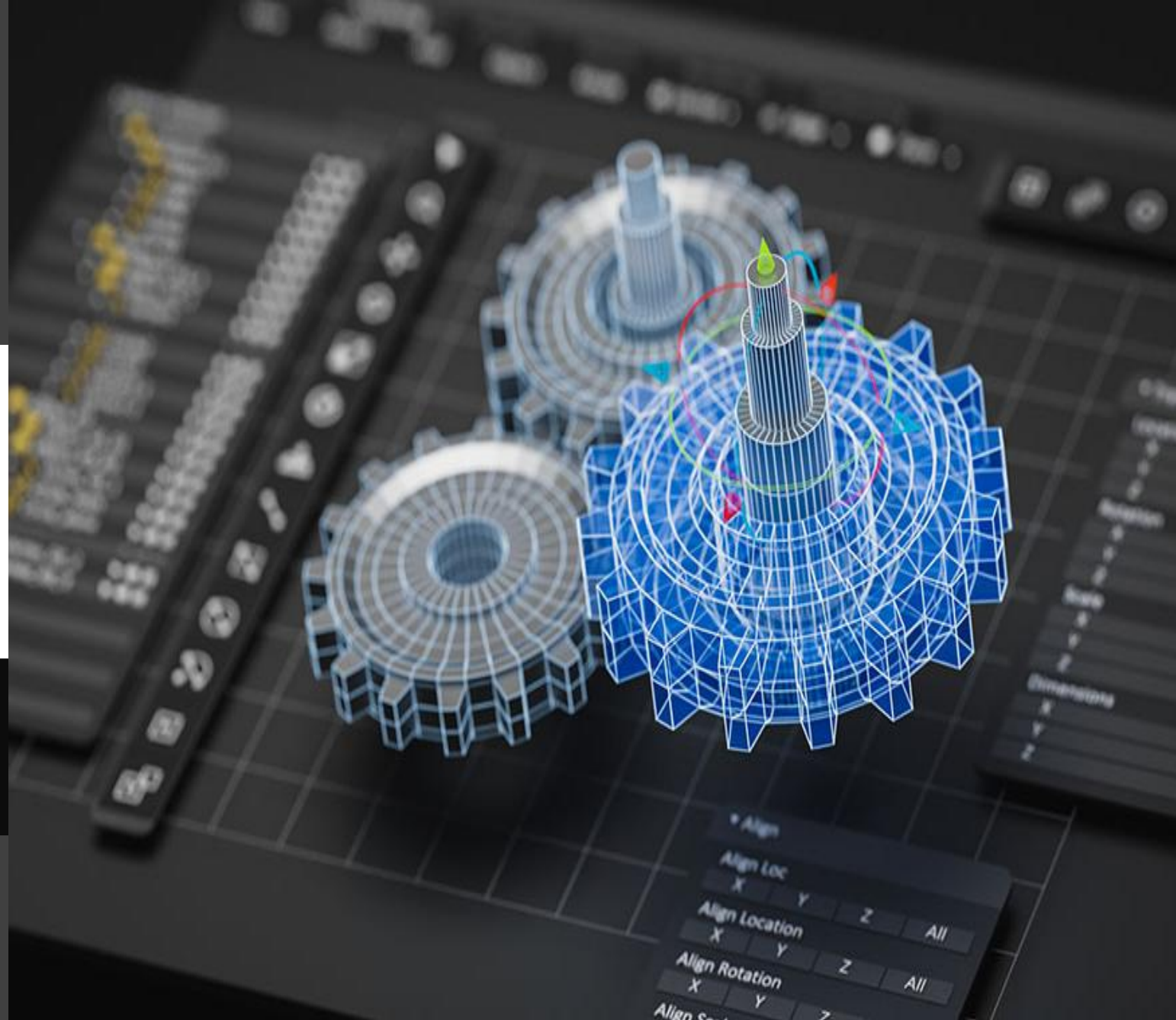
Company Capabilities

MACHINE CAPACITY

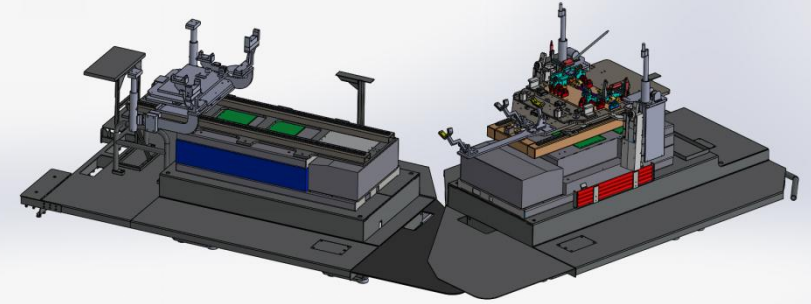
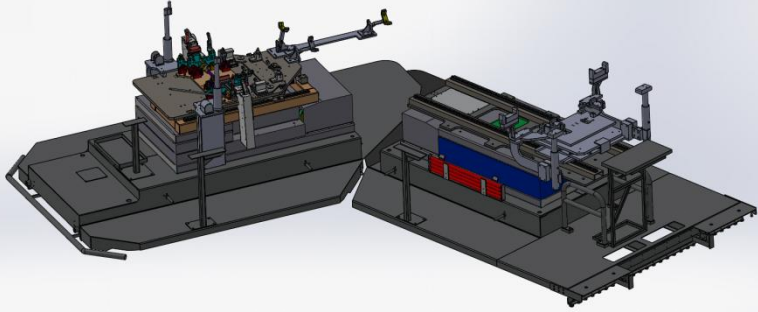
ENGINEERING AND DESIGN SERVICES	MACHINE MANUFACTURING	CONTRACT MANUFACTURING	FIXTURE DESIGN AND MANUFACTURING	CONVEYOR DESIGN AND MANUFACTURING	PRODUCT ENGINEERING	MOLD DESIGN AND MANUFACTURING	GEAR DESIGN AND MANUFACTURING	PROTOTYPE MANUFACTURING
Automotive industry	Automotive industry	Automotive industry	Automotive industry	Automotive industry	Automotive industry	Metal injection molding	Automotive industry	Automotive industry
Heavy industry sector (Iron-Steel, Rolling Mills)	Heavy industry sector (Iron-Steel, Rolling Mills)	Heavy industry sector (Iron-Steel, Rolling Mills)	Heavy industry sector (Iron-Steel, Rolling Mills)	Heavy industry sector (Iron-Steel, Rolling Mills)	Heavy industry sector (Iron-Steel, Rolling Mills)	Plastic injection molding	Heavy industry sector (Iron-Steel, Rolling Mills)	Heavy industry sector (Iron-Steel, Rolling Mills)
Mining industry	Mining industry	Mining industry	Mining industry	Mining industry	Mining industry	Sheet metal molding		
Food industry	Food industry	Food industry	Food industry	Food industry	Food industry		Food industry	
Chemical industry	Chemical industry	Chemical industry	Chemical industry	Chemical industry	Chemical industry		Chemical industry	
Defense and Aviation	Defense and Aviation	Defense and Aviation	Defense and Aviation	Defense and Aviation	Defense and Aviation		Defense and Aviation	Defense and Aviation

Projects

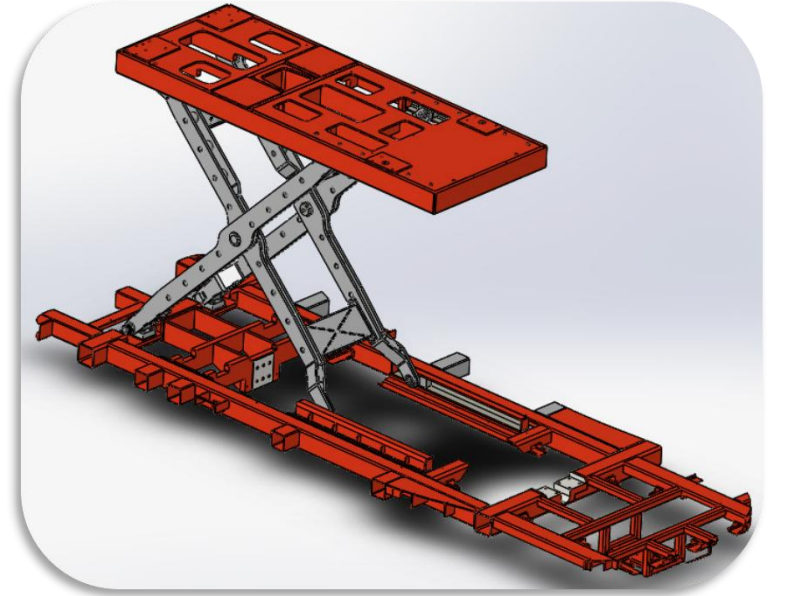
Projects and design and
manufacture



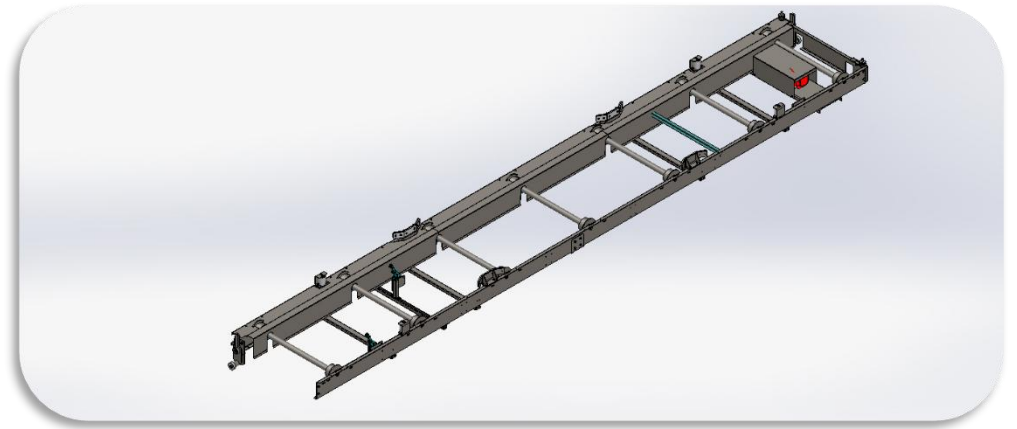
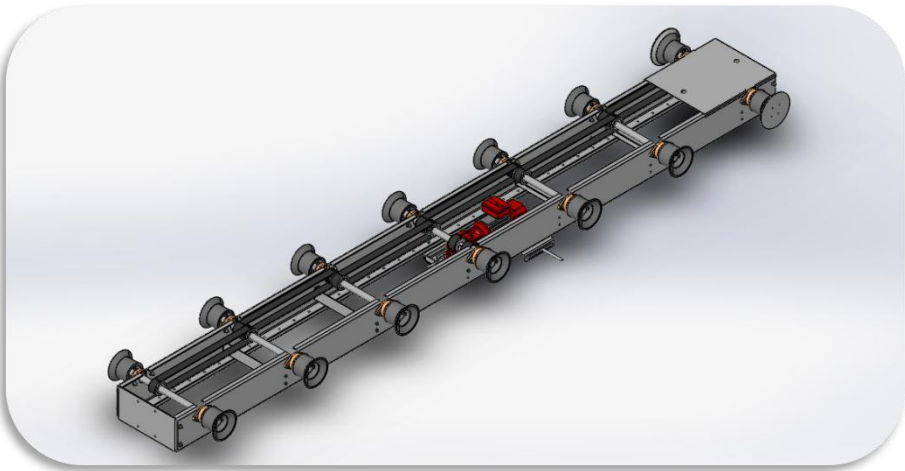
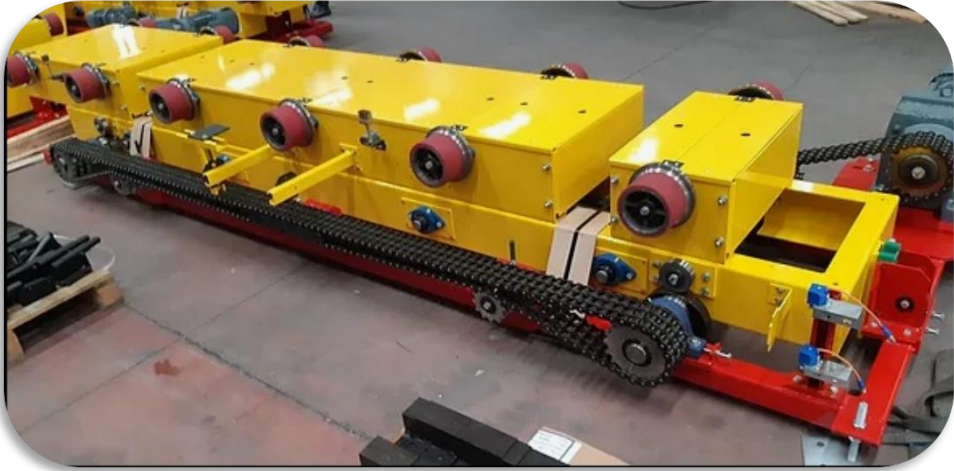
Dolly Systems



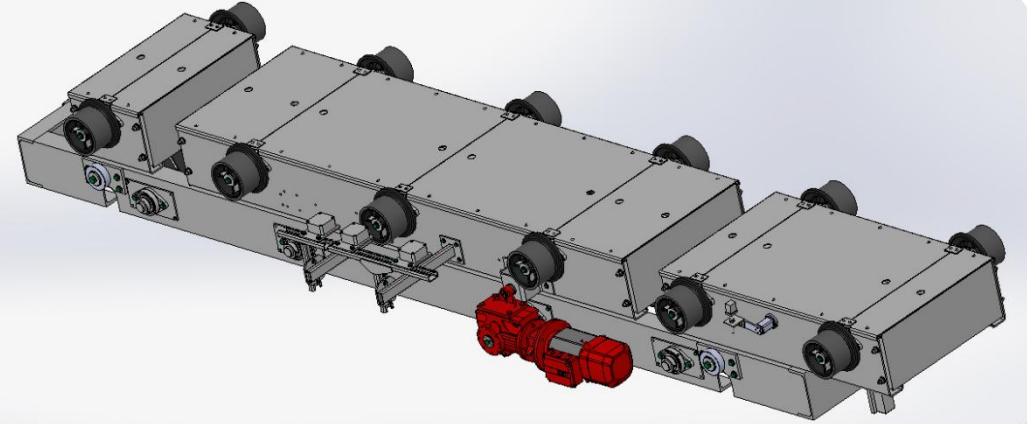
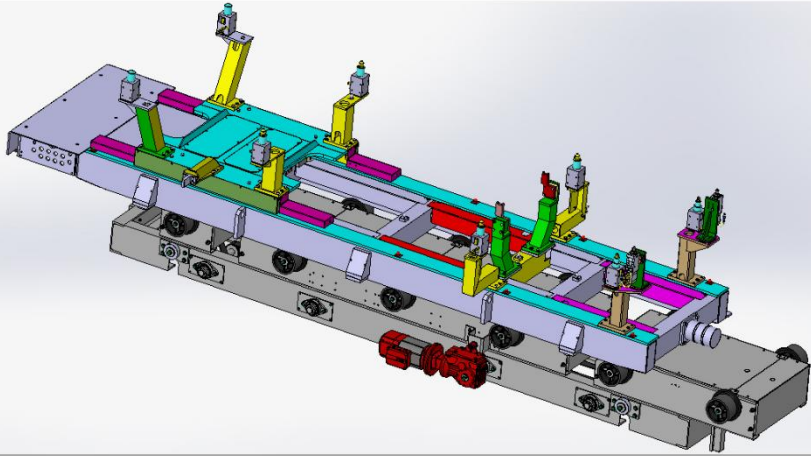
Manlift and Lift Systems



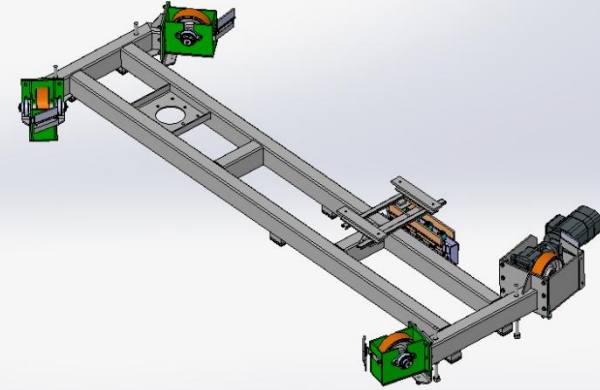
Conveyor Systems



Conveyor systems



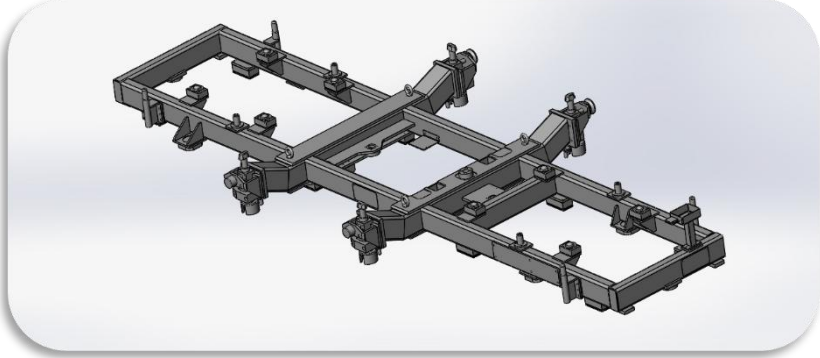
Paint Workshop Conveyor and Pivotan Chassis



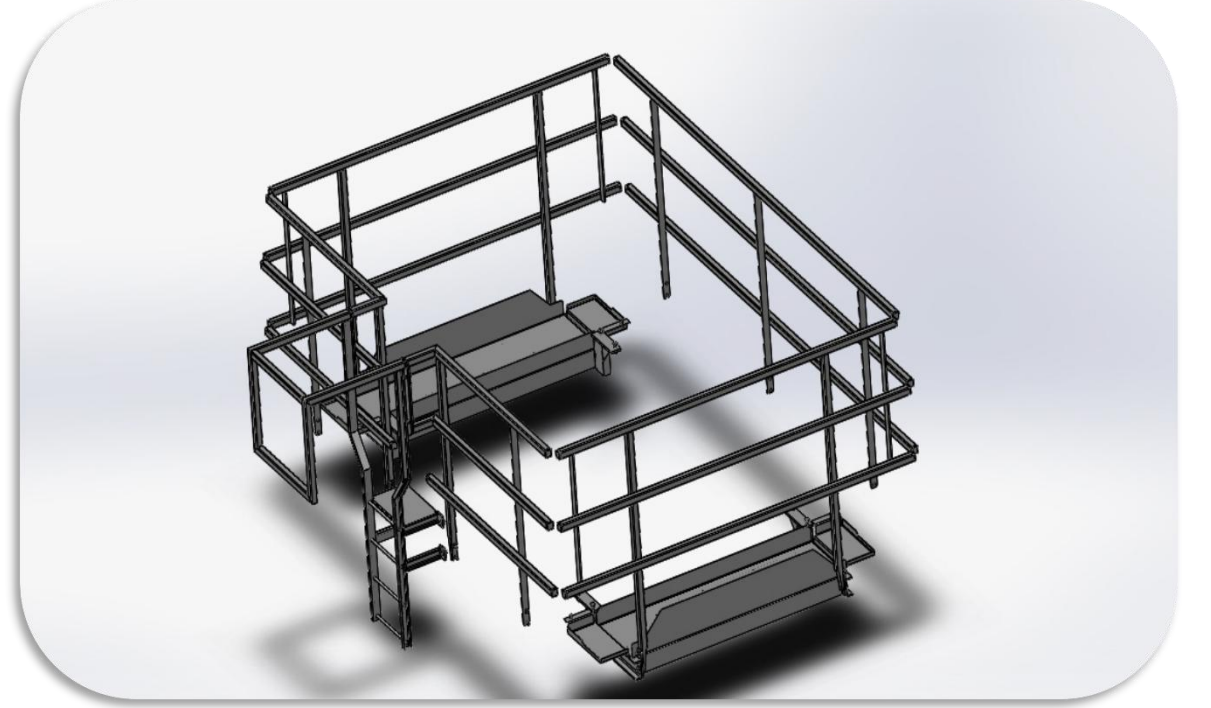
Lift Conveyor Systems



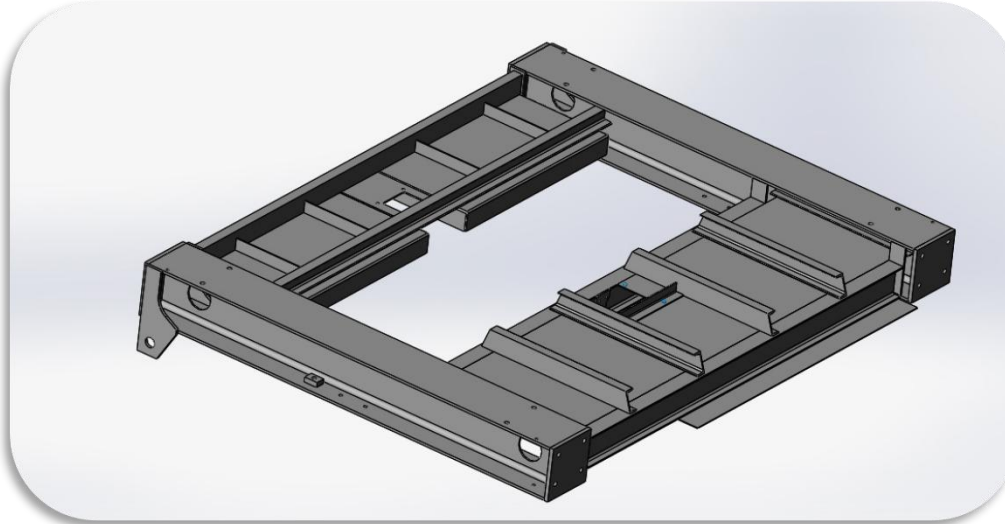
Mulhouse ve Sochaux Şase



Freight elevator equipment



Freight elevator equipment



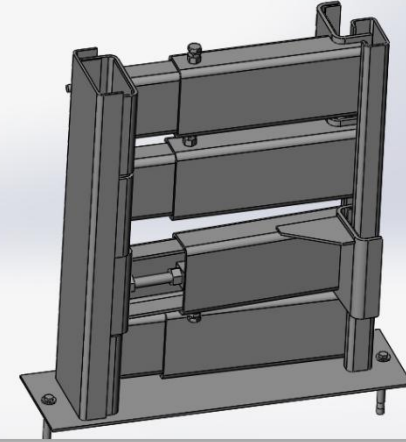
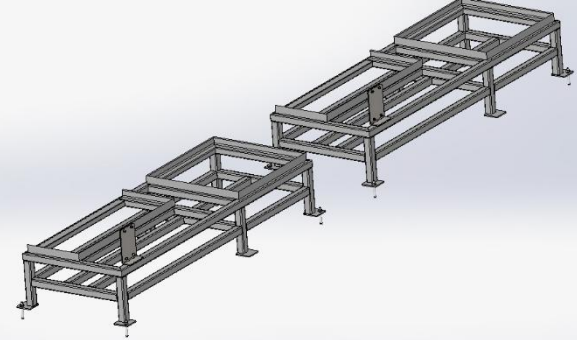
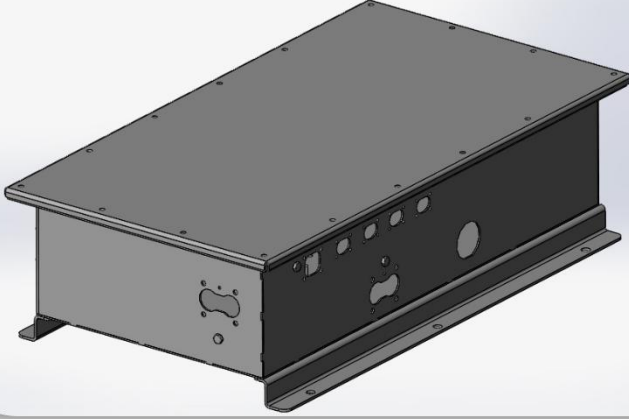
Freight elevator drum equipment



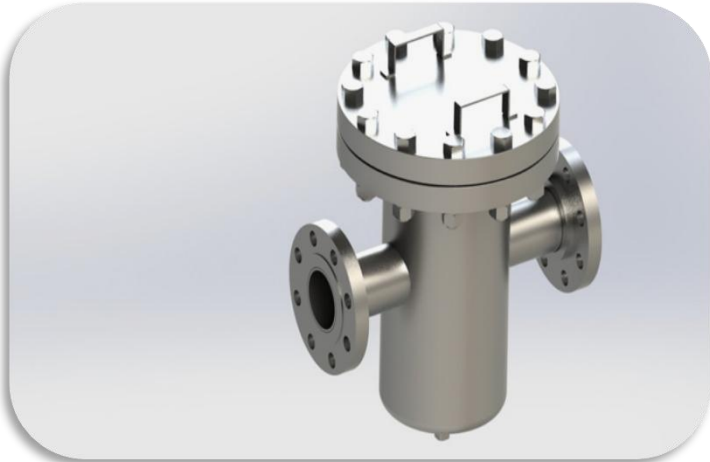
Welded Manufacturing



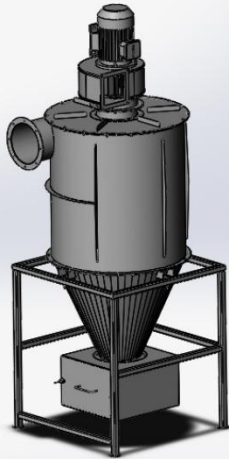
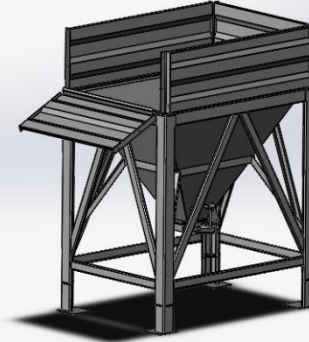
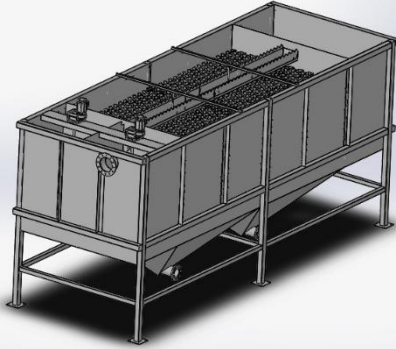
Welded Manufacturing



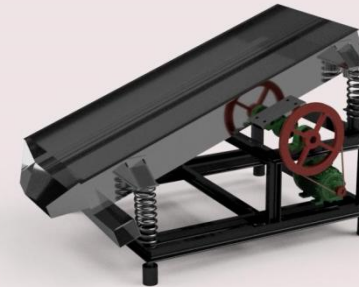
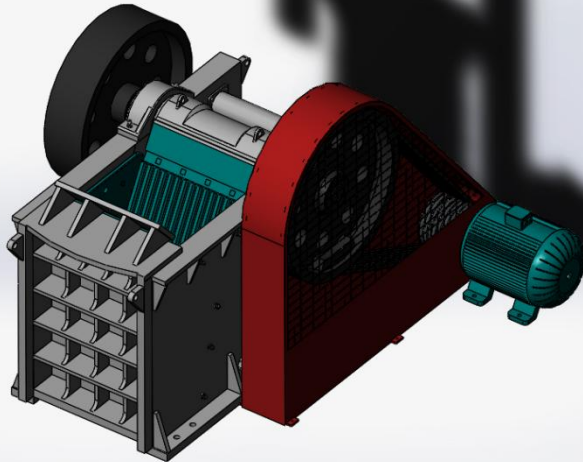
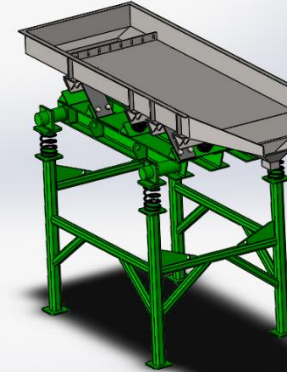
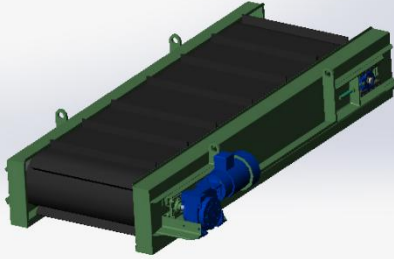
Mining industry equipment



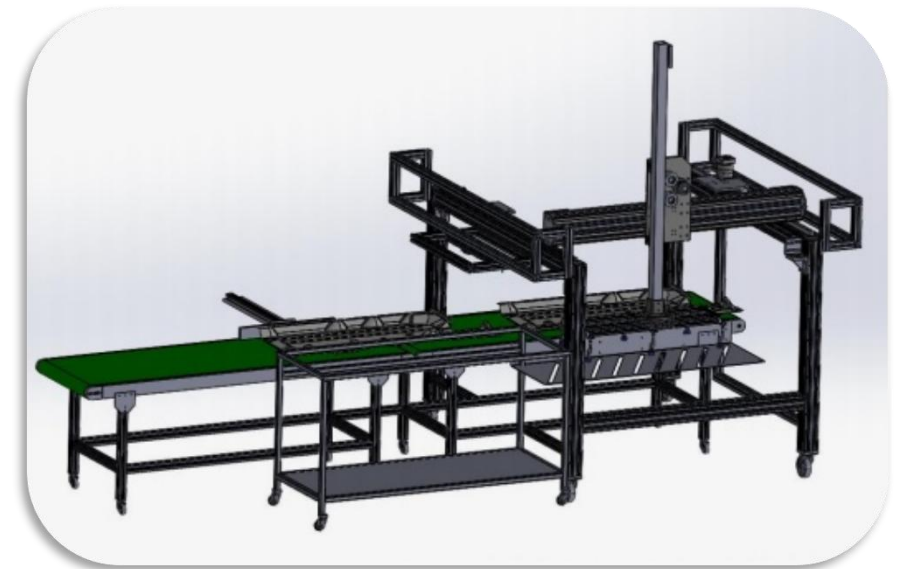
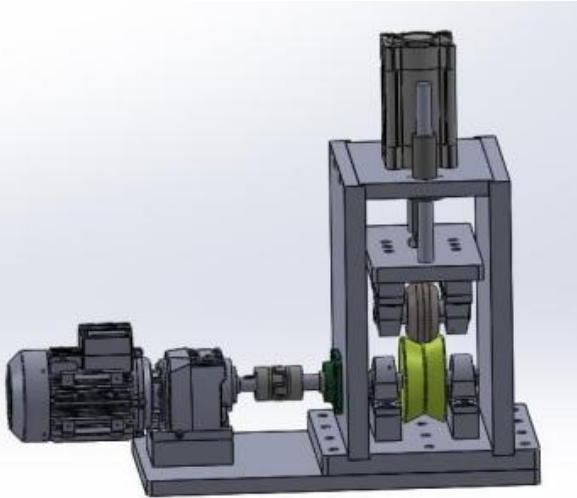
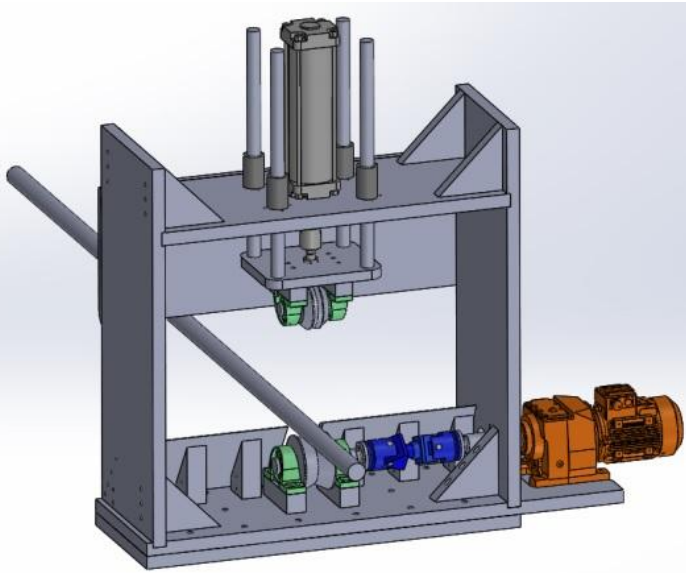
Mineral Processing Systems



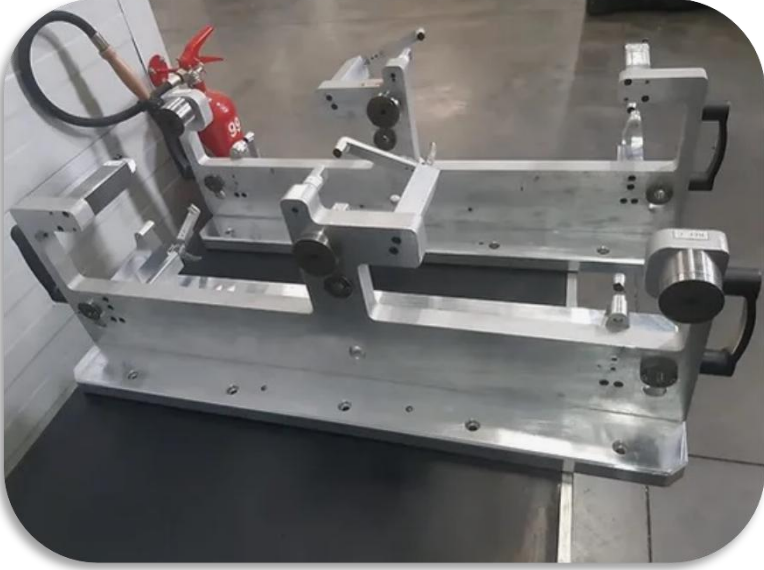
Mineral Processing Systems



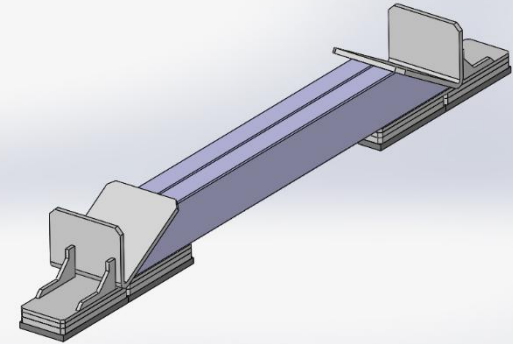
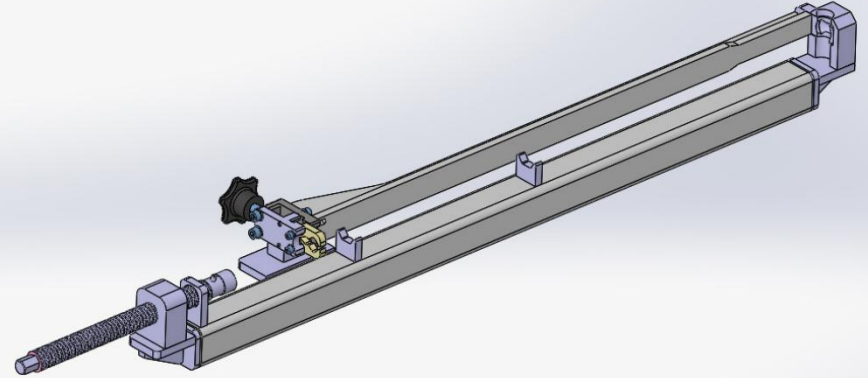
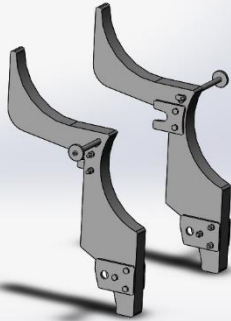
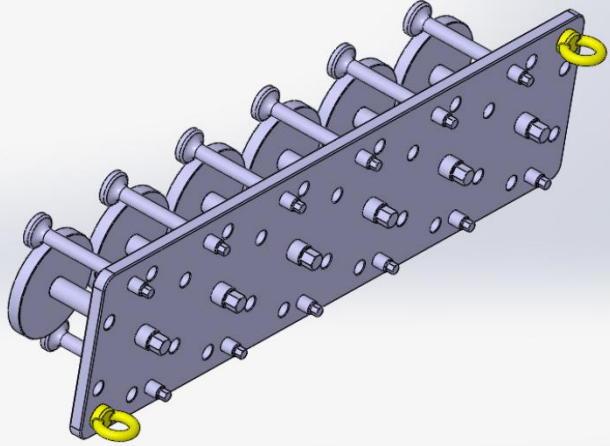
Rolling mill equipment



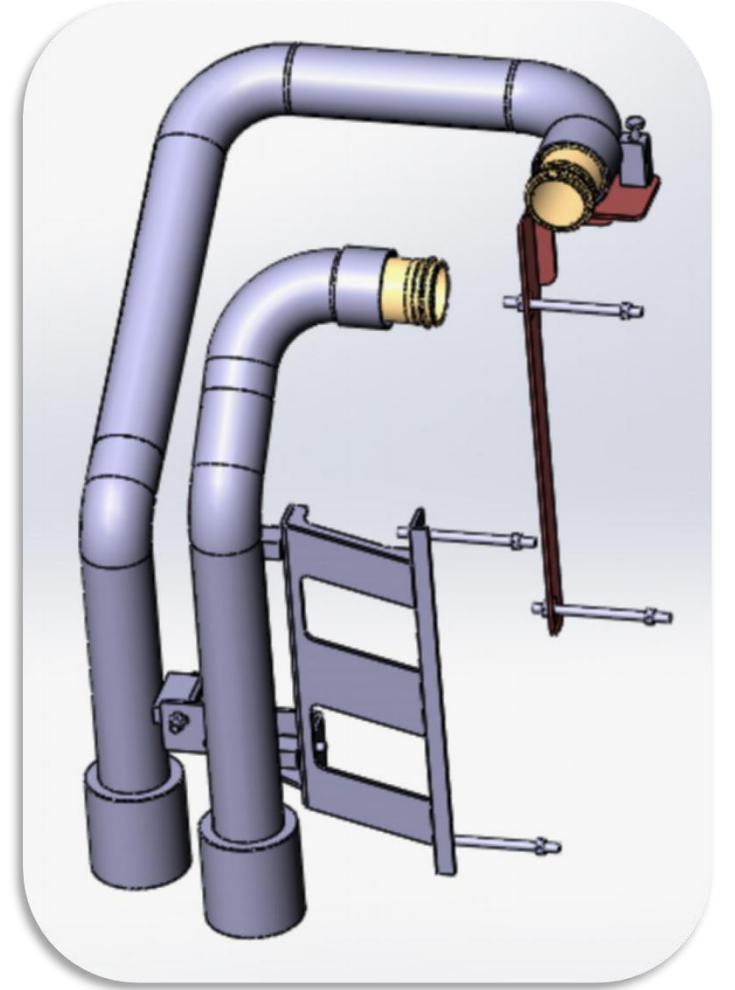
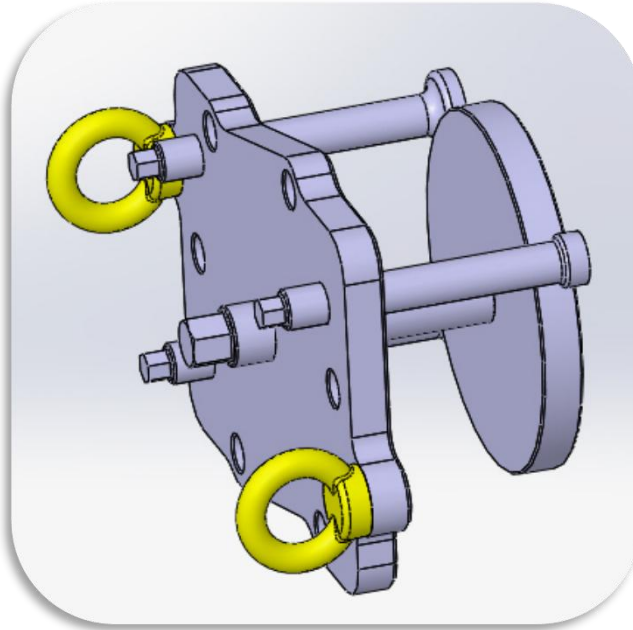
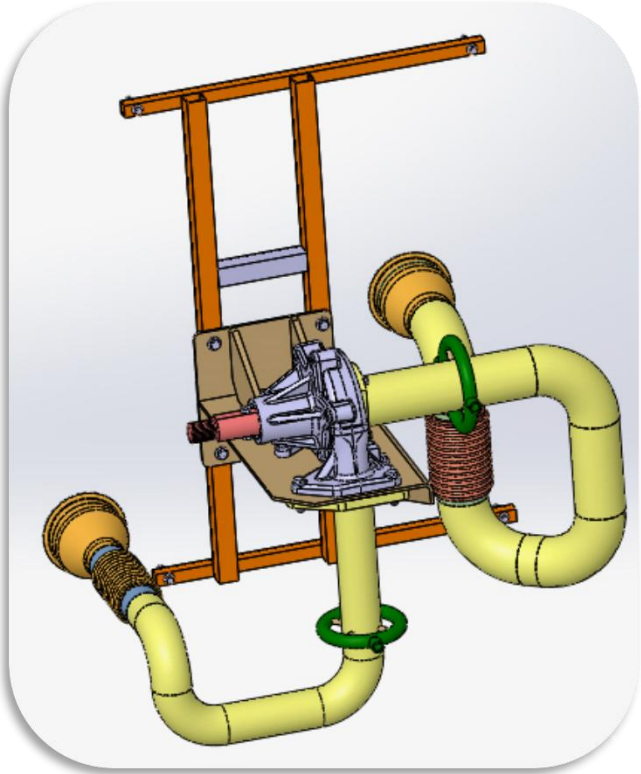
Measuring Fixtures



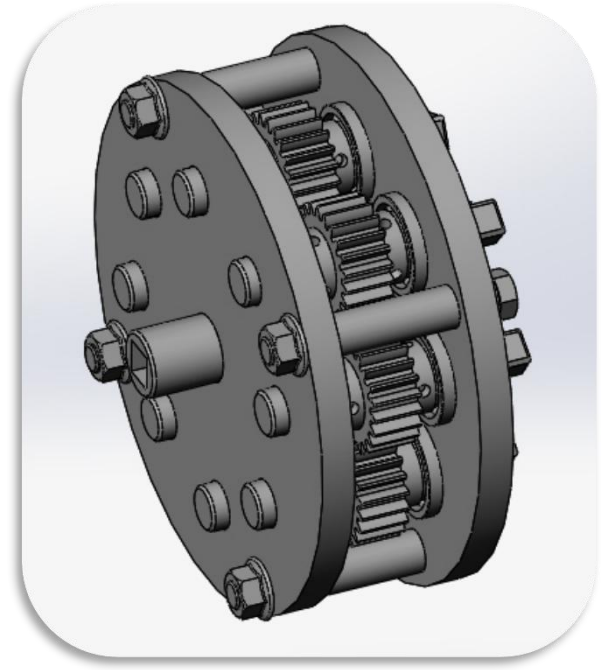
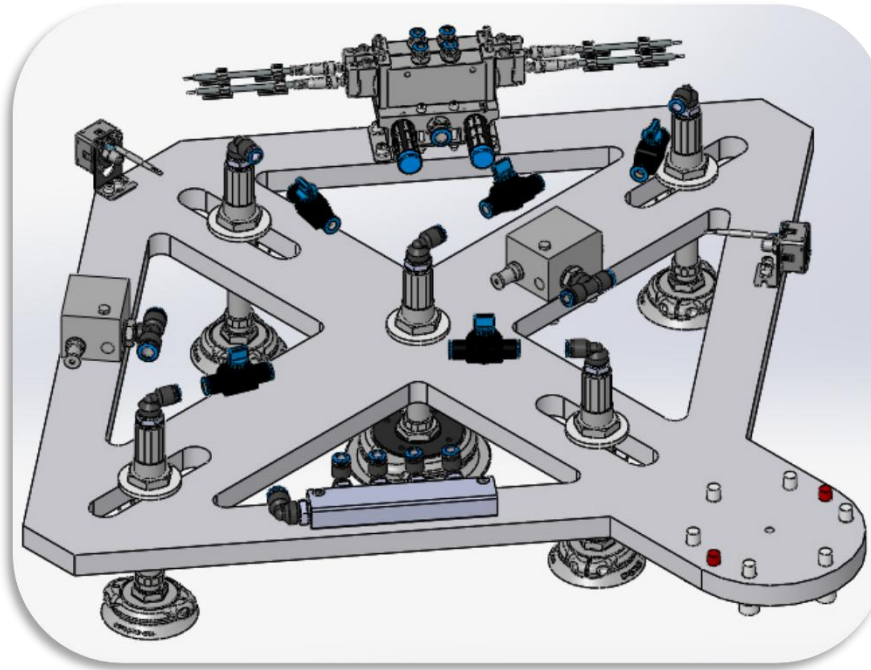
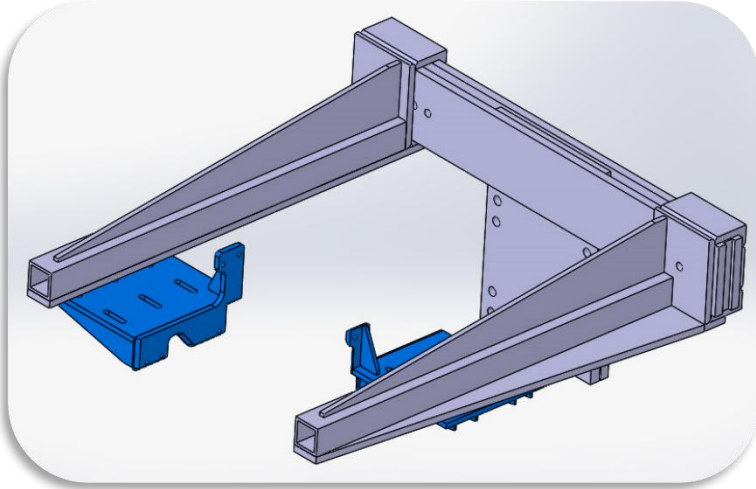
Steering Wheel Mounting Device



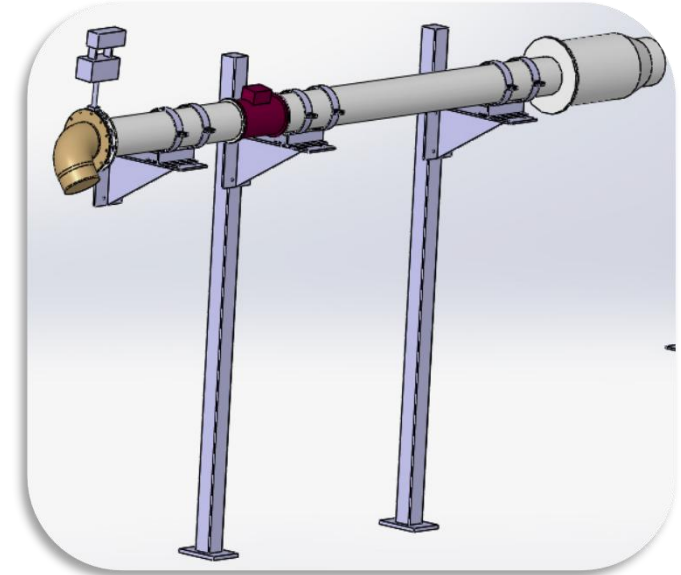
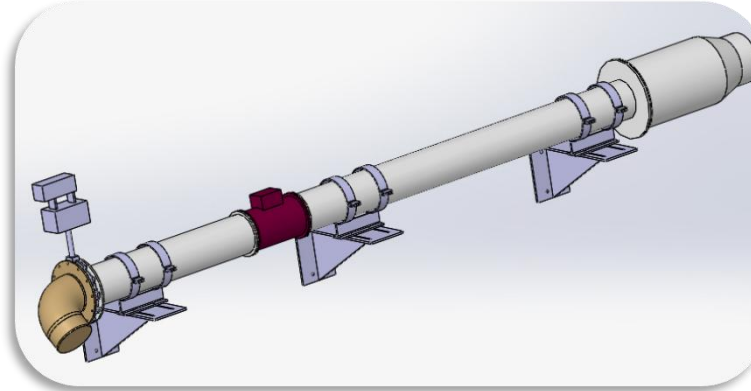
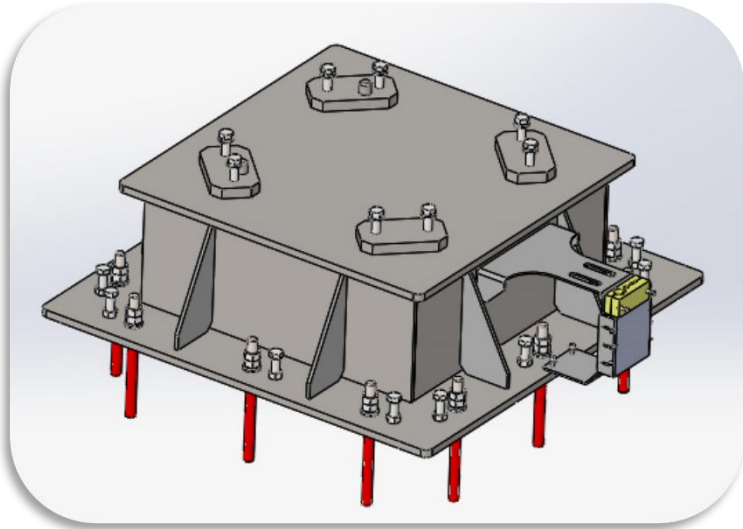
Water Pump Test Rig - Test Apparatus - Exhaust Pipe Connection Fixture



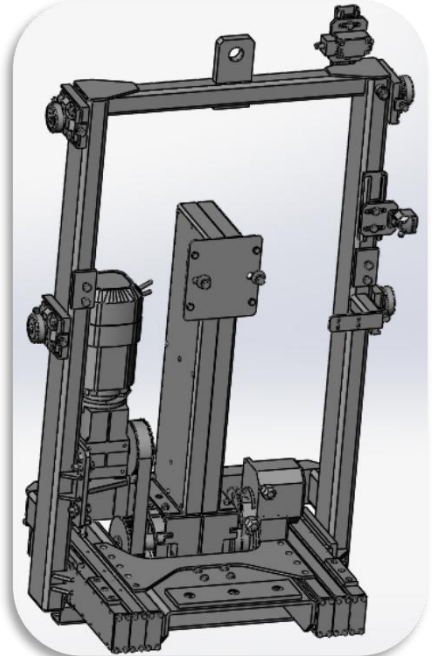
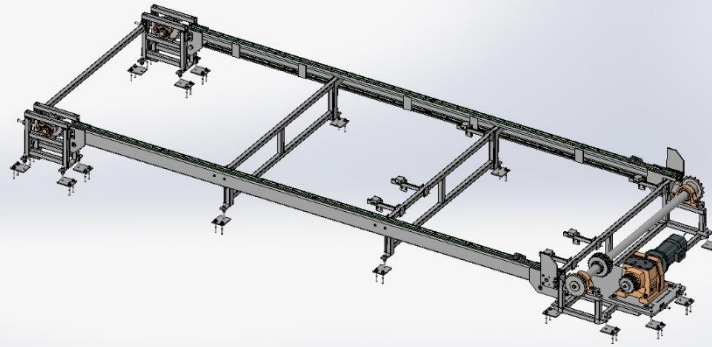
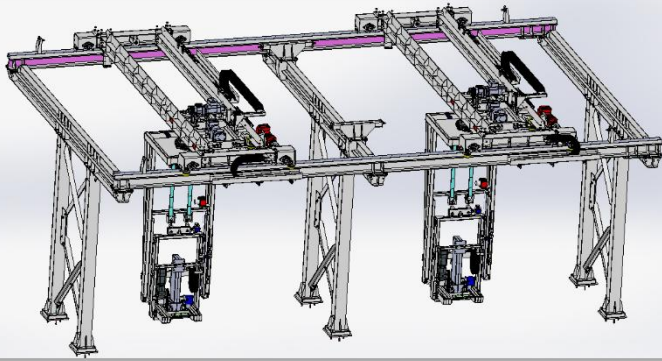
Collection Fixture - Robotic Platform - Shaft-hub Assembly



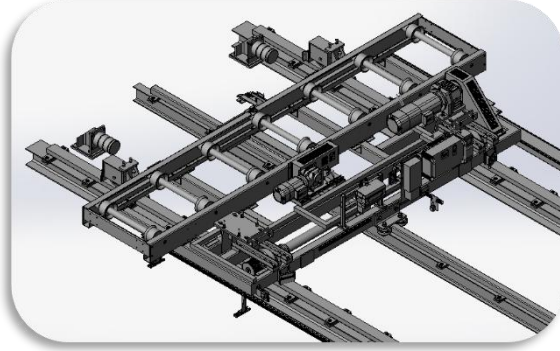
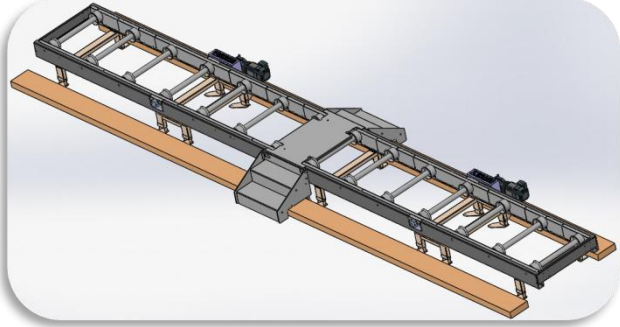
Mounting Fixture - Airflow Pipe Systems



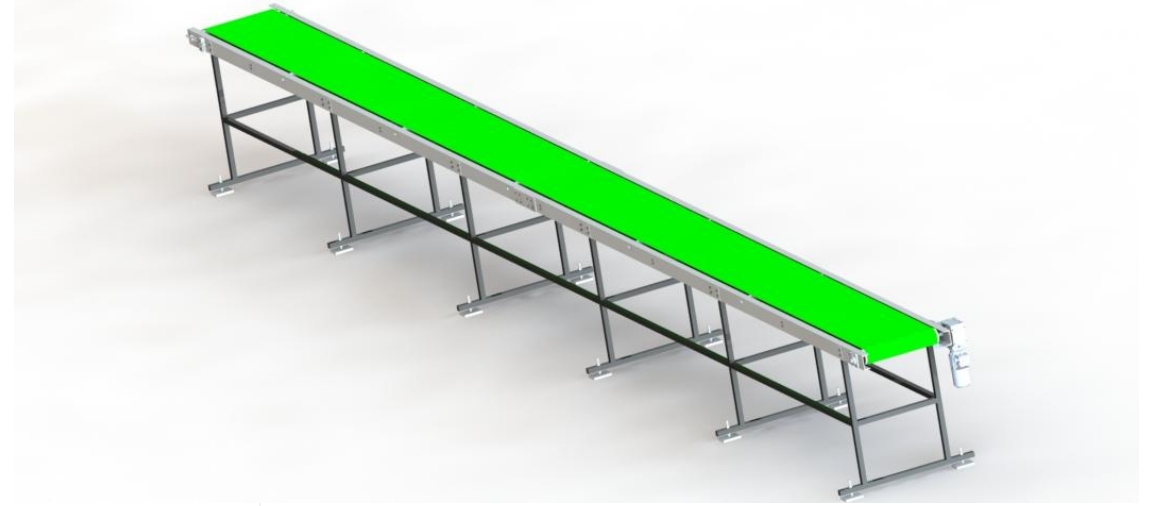
Transfer Systems - Lifting Systems



Conveyor Systems



Conveyor Systems



Industrial Product Sales - RINGSPANN

One-Way Clutches



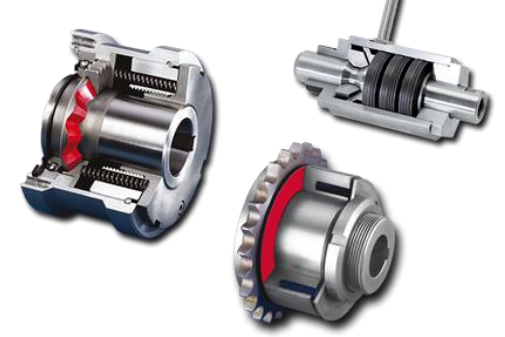
Brake Systems



Taper Lock Systems



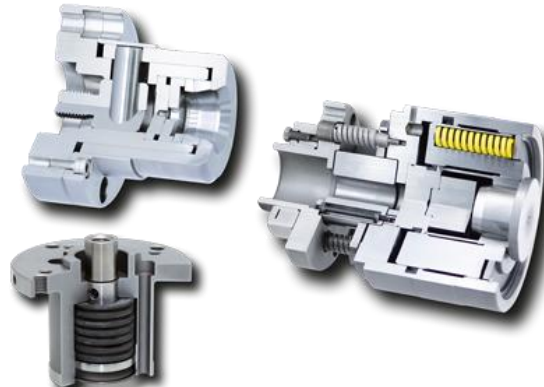
Overload Clutches



Industrial Couplings



Precision Clamping Elements



Remote Control Systems

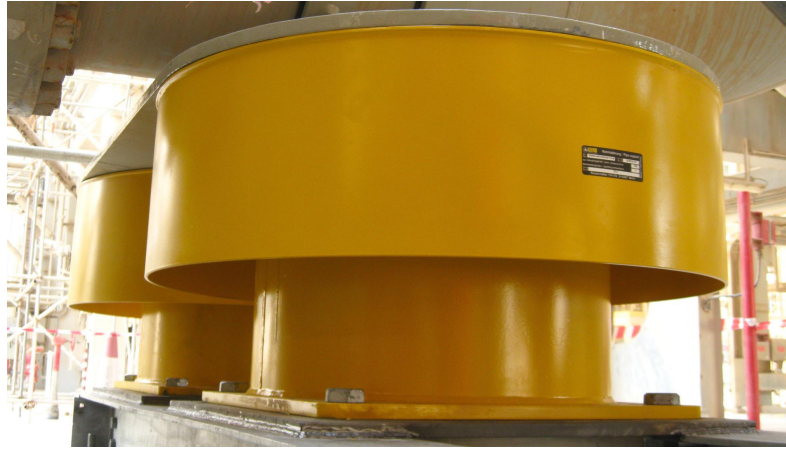


Industrial Product Sales

Vibration Damping Systems-GERB



HELICAL STEEL SPRING ELEMENTS



VISCODAMPERS



TUNED MASS DAMPERS

References

The companies we
manufacture for



ANADOLU ISUZU

BMC POWER

gunak
HEAVY INDUSTRIES





Thank You

Mustafa Ercan



542-459-06-92



mustafa.ercan@htmühendislikcom



www.htmühendislik.com

