

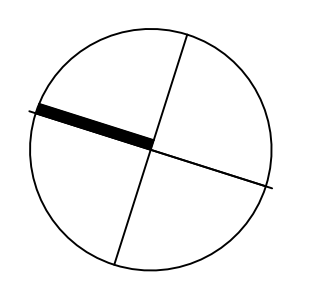


PLANT LIST				
BOTANICAL NAME	COMMON NAME	SIZE	ROOT	Mature Plant Size (H.LxWd.)
Trees Deciduous				
<i>Fraxinus pennsylvanica</i> 'Rugby'	Prairie Spire Green Ash	6cm Cal	B&B	10.0m x 6.0m
<i>Fraxinus penn.</i> 'Marshall seedless'	Marshall Ash	6cm Cal		15m. x12m.
<i>Populus tremuloides</i>	Trembling Aspen	5cm cal		10m x 6m.
<i>Quercus bicolor</i> 'Bonnie and Mike'	Beacon Oak	6cm Cal	B&B	10.0m x 4.5m
<i>Cercidiphyllum japonicum</i>	Katsura tree	5 cm Cal	pot	12.0m x 6.0m
<i>Quercus macrocarpa</i>	Bur Oak	6cm Cal		20m. x 20m
<i>Cercis canadensis</i>	Eastern Redbud	5 cm Cal		7.5m. x 9m.
<i>Pyrus calleryana</i> 'Chanticleer'	Callery Pear	5 cm Cal		9m x 4m.
Trees Evergreen				
<i>Pinus ponderosa</i>	Ponderosa Pine	1.5m. ht.		35m. ht.
<i>Pinus ponderosa</i>	Ponderosa Pine	4" plug		35m. ht.
Shrubs				
<i>Amelanchier alnifolia</i>	Saskatoon	#01	Potted	3.0m x 1.8m
<i>Cornus rodoi</i>	Red Twig Dogwood	#01	Potted	1.5m x 1.5m
<i>Mahonia aquifolium</i>	Oregon grape	#01	Potted	1.35m x 1.0m

- LEGEND:**
- DECIDUOUS TREES
 - PROPERTY LINE
 - FENCE
 - CONCRETE
 - ROCK MULCH DRESSING
 - GRAVEL SURFACING
 - SOD
 - HYDROSEED
 - PLANTING AREA
 - BENCH
 - RAISED PLANTER
 - STORAGE

- GENERAL NOTES:**
- PLANT MATERIALS AND CONSTRUCTION METHODS SHALL CONFORM TO MINIMUM STANDARDS ESTABLISHED IN THE CANADIAN LANDSCAPE STANDARD (CURRENT EDITION).
 - THE LANDSCAPE DESIGN DESIGNATED HEREIN IS CONCEPTUAL BUT REFLECTS THE MINIMUM ACCEPTABLE QUALITY AND SIZE.
 - PLANT MATERIAL SELECTIONS ARE CONCEPTUAL ONLY. FINAL PLANTING SELECTIONS MAY VARY DEPENDING UPON AVAILABILITY.
 - ALL PLANTING BEDS SHALL HAVE APPROVED MULCH.
 - ALL LANDSCAPE AREAS TO BE IRRIGATED WITH AN EFFICIENT AUTOMATIC IRRIGATION SYSTEM.
 - THIS DRAWING DEPICTS FORM AND CHARACTER AND IS TO BE USED FOR DEVELOPMENT PERMIT SUBMISSION ONLY. IT IS NOT INTENDED FOR USE AS A CONSTRUCTION DOCUMENT.

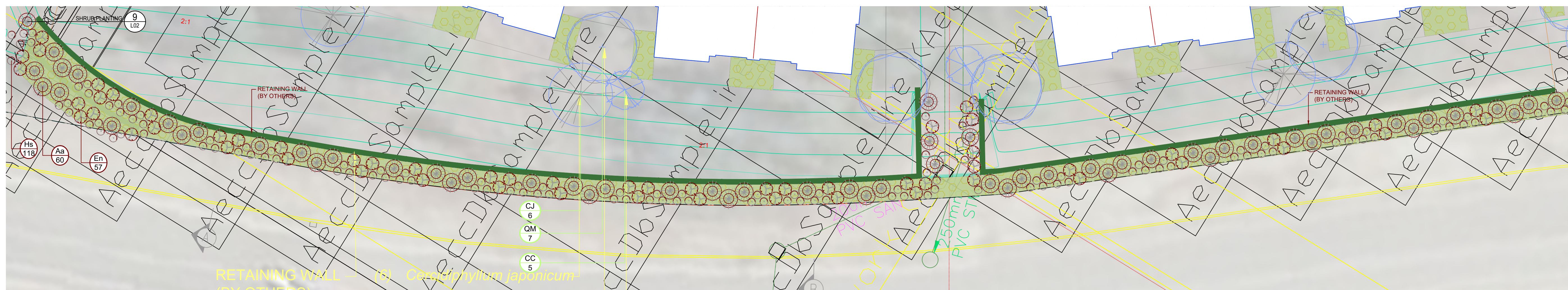
HYDROSEED - SEED MIX		
Seed Weight	BOTANICAL NAME	COMMON NAME
40%	<i>Pseudoroegneria spicata</i>	Bluebunch wheatgrass
20%	<i>Festuca campestris</i>	Rough Fescue
10%	<i>Festuca idahoensis</i>	Idaho Fescue
10%	<i>Balsamorhiza sagittata</i>	Arrowleaf Balsamroot
10%	<i>Achillea millefolium</i>	Common Yarrow
10%	<i>Gaillardia aristata</i>	Blanket Flower



NO.	DATE (MM/DD/YY)	REVISION
4	05/04/2023	RE-ISSUED FOR DEVELOPMENT PERMIT
3	04/13/2023	RE-ISSUED FOR DEVELOPMENT PERMIT
2	11/28/2019	RE-ISSUED FOR DEVELOPMENT PERMIT
1	08/23/2019	ISSUED FOR DEVELOPMENT PERMIT

DESIGN: BD
DRAWN: NV
CHKD: BD
DATE: 04/13/23
SCALE: 1:500

SEAL



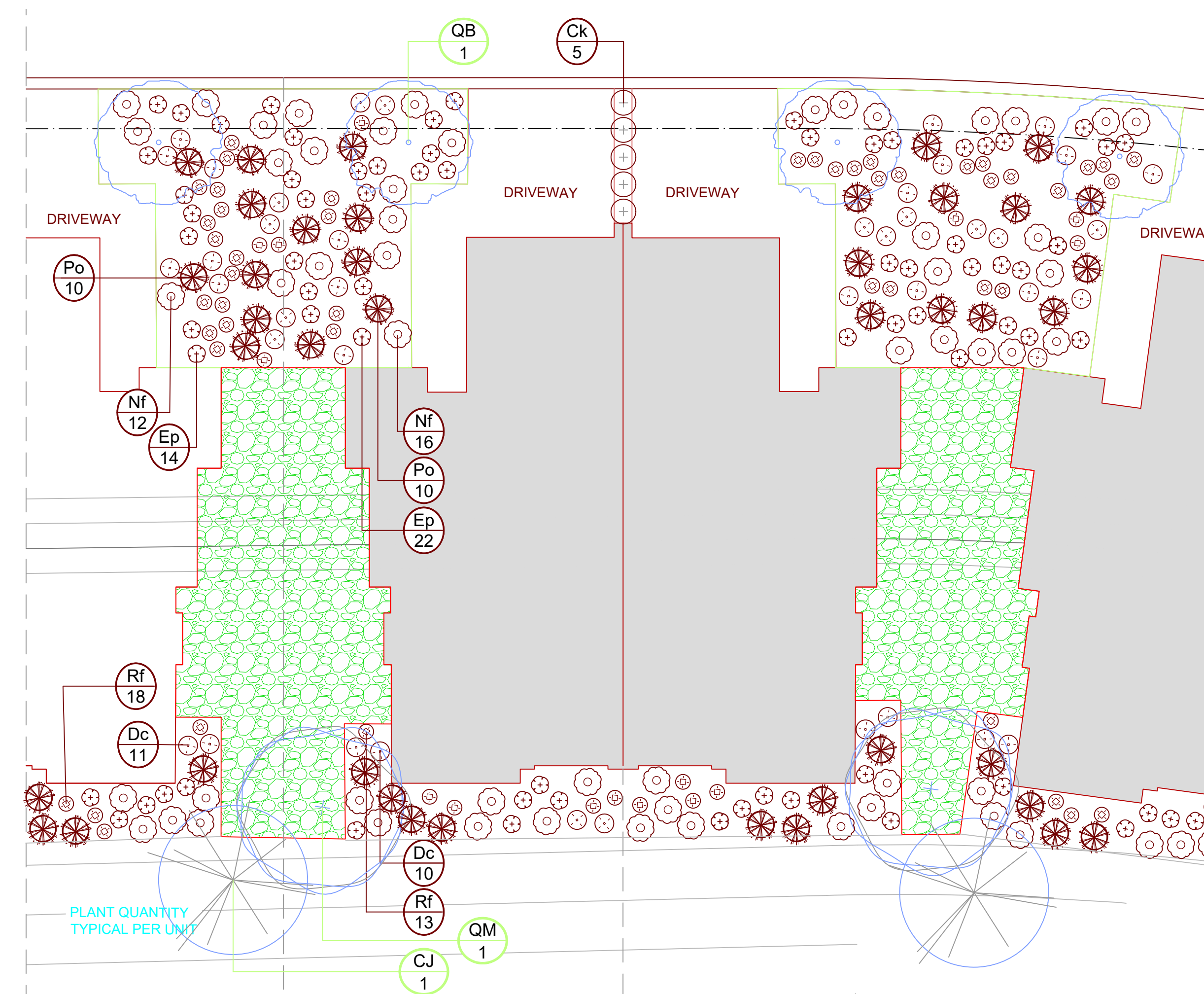
1 RETAINING WALL - PLANTING PLAN
1:200

TREE LEGEND	
Symb.	BOTANICAL NAME
	<i>Cercidiphyllum japonicum</i>
	<i>Cercis canadensis</i>
	<i>Quercus macrocarpa</i>

PLANT LEGEND		
Symb.	Key	BOTANICAL NAME
Shrubs		
	Aa	<i>Amelanchier alnifolia</i>
	En	<i>Ericameria nauseosa</i>
Ornamental Grasses		
	Hs	<i>Helictotrichon sempervirens</i>



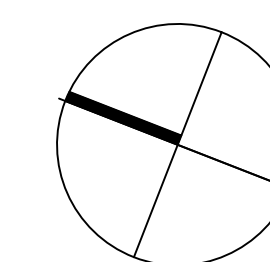
2 BUILDING 'A' TYPICAL PLANTING
1:150



3 BUILDING B TYPICAL PLANTING
1:150

TREE LEGEND	
Symb.	BOTANICAL NAME
	<i>Quercus bicolor</i> 'Bonnie and Mike'

PLANT LEGEND		
Symb.	Key	BOTANICAL NAME
Ornamental Grasses		
	Ck	<i>Calamagrostis x acutiflora</i> 'Karl Foerster'
	Dc	<i>Deschampsia cespitosa</i> 'Goldtau'
	Po	<i>Pennisetum orientale</i> 'Karley Rose'
Perennials		
	Ep	<i>Echinacea purpurea</i> 'Magnus'
	Nf	<i>Nepeta x faassenii</i> 'Walker's Low'
	Rf	<i>Rudbeckia fulgida</i> 'Goldsturm'



SEAL

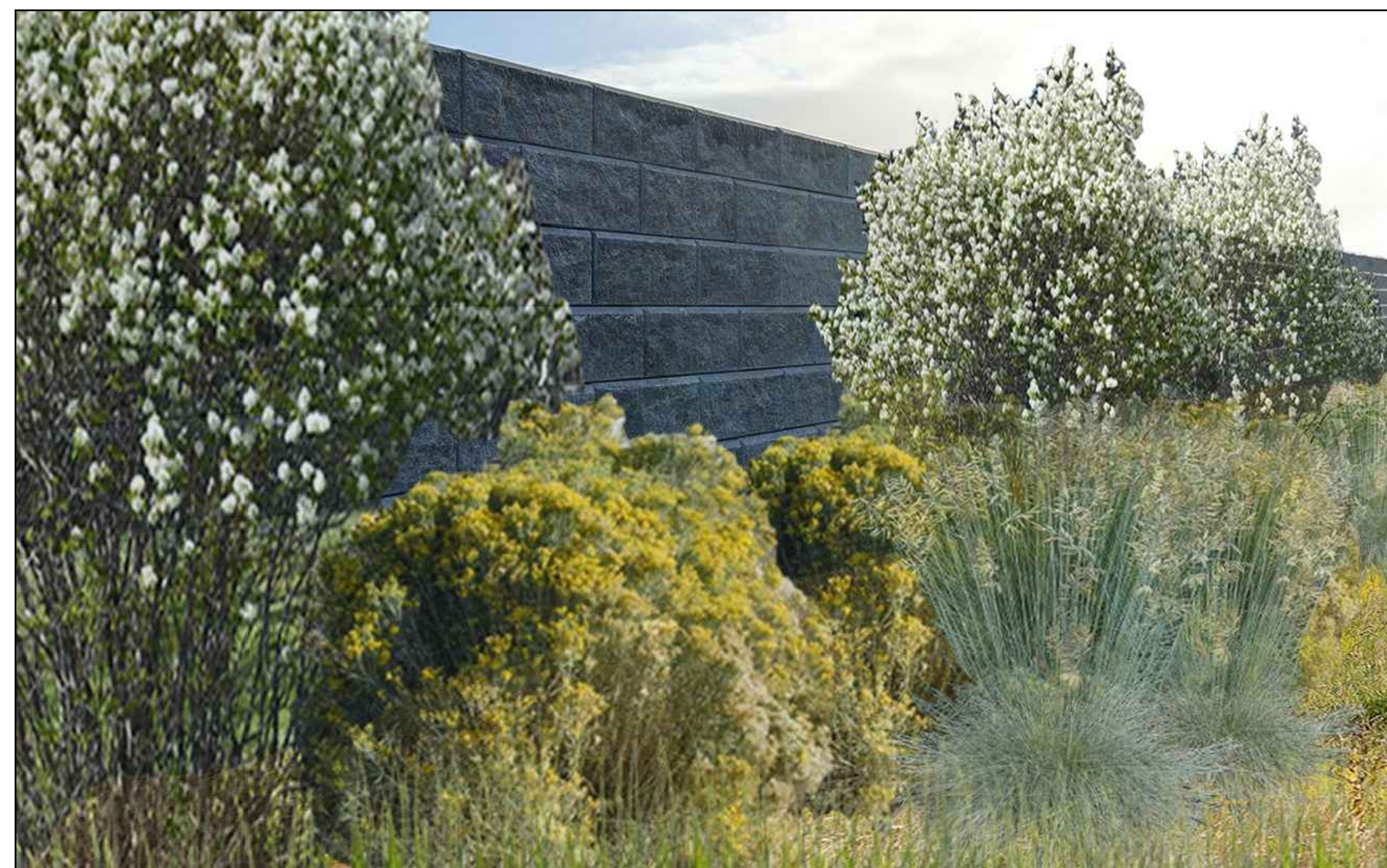
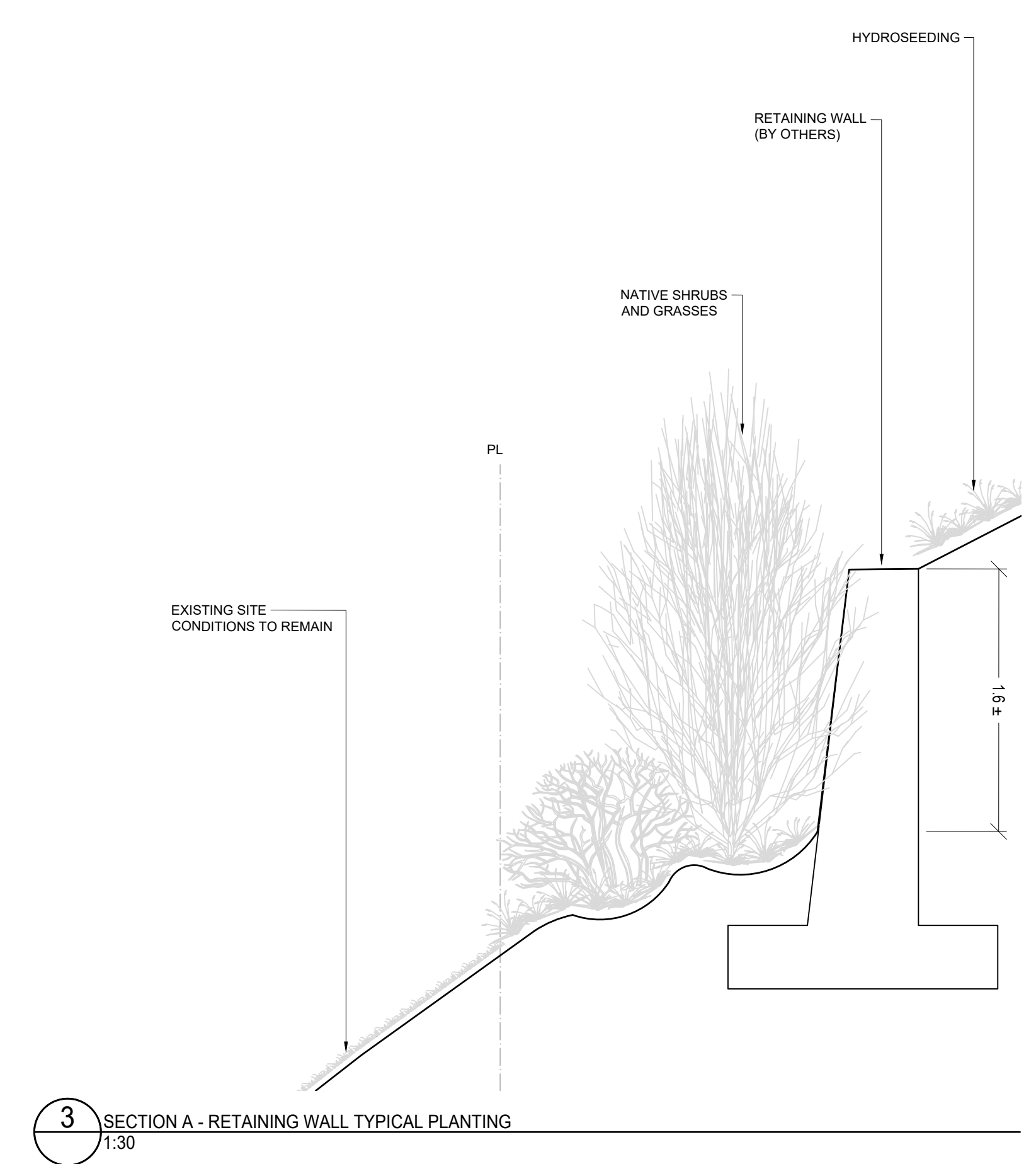
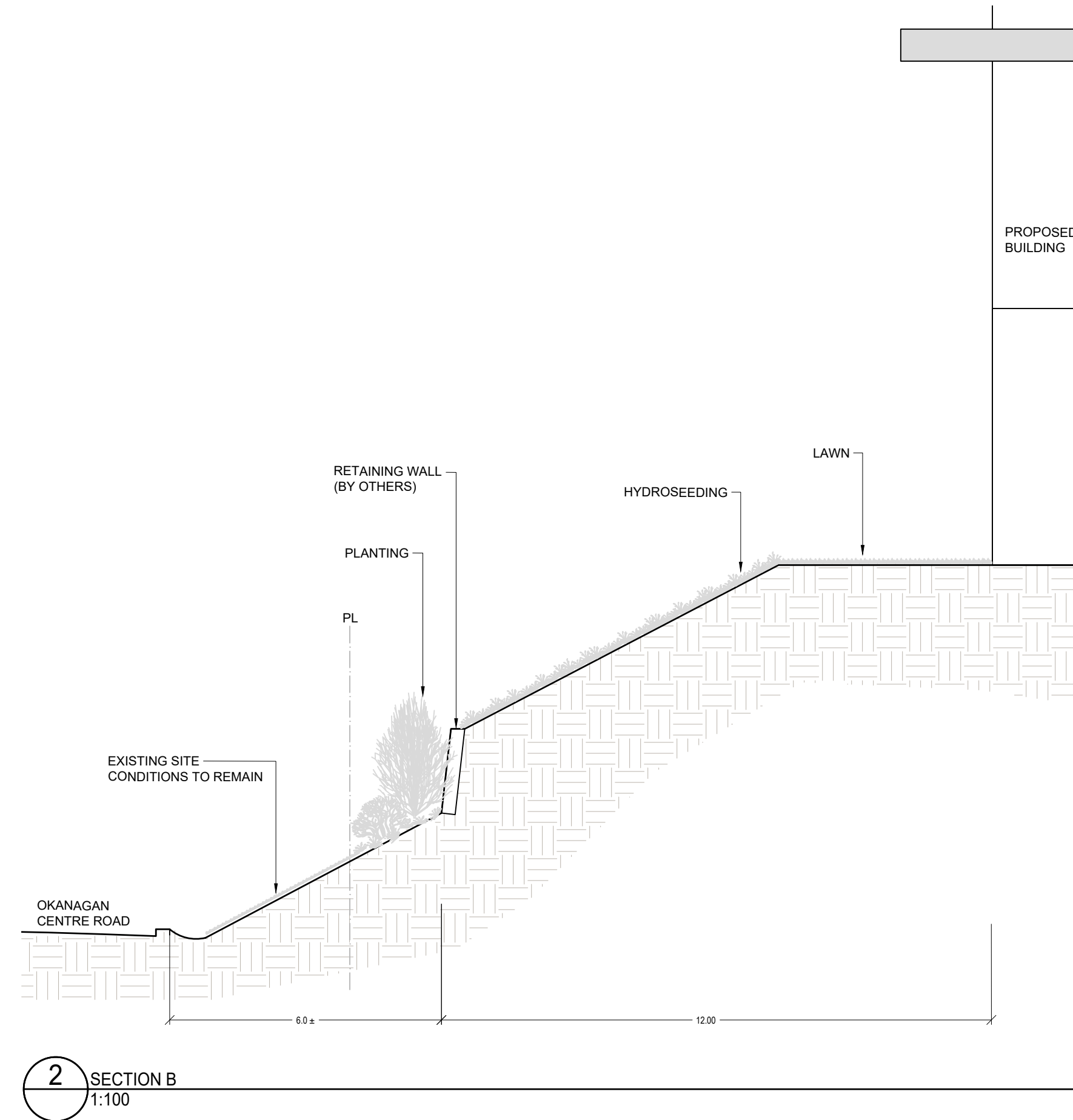
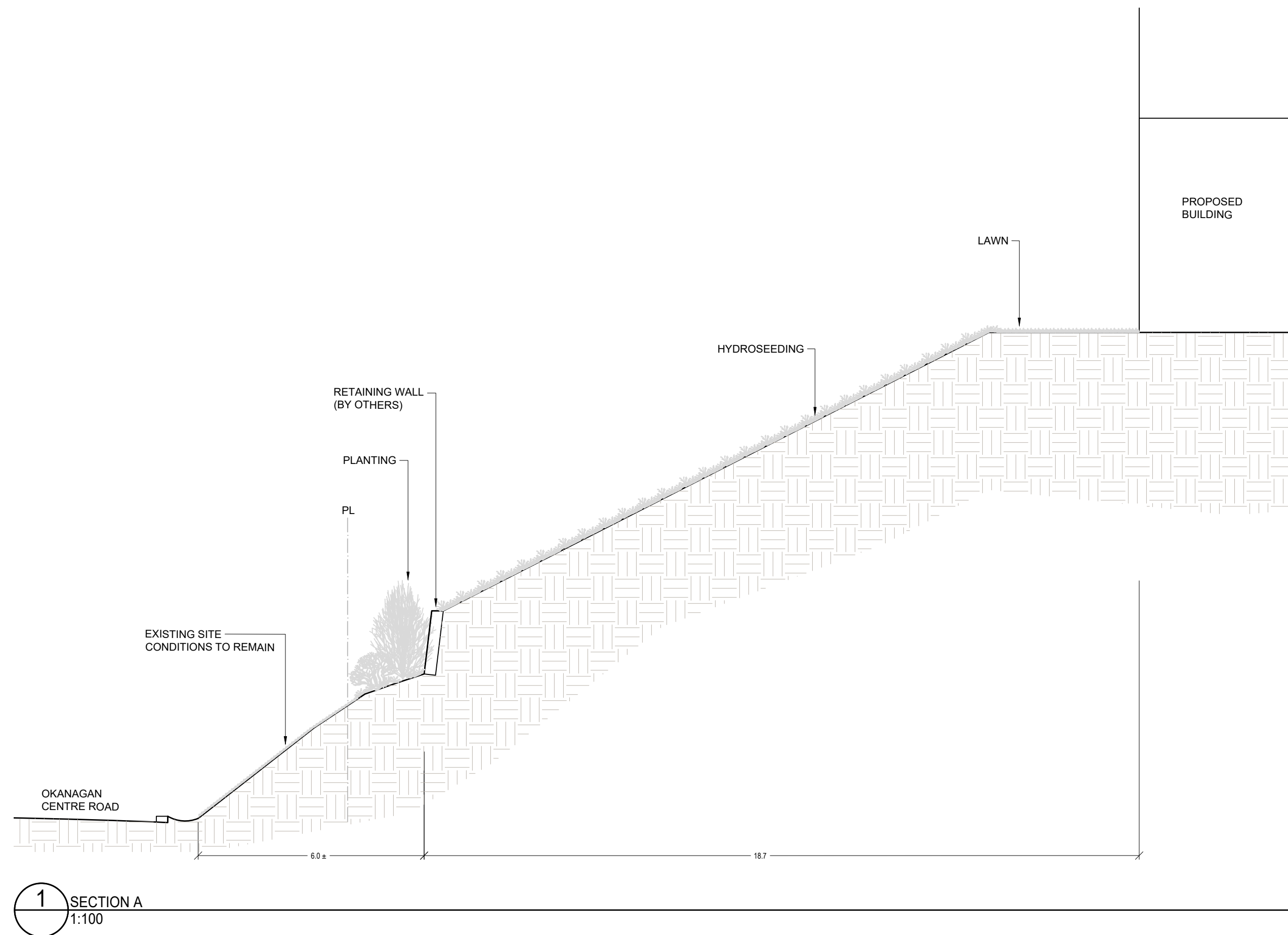
NO.	DATE (MM/DD/YY)	REVISION
3	04/13/2023	RE-ISSUED FOR DEVELOPMENT PERMIT
2	11/28/2019	RE-ISSUED FOR DEVELOPMENT PERMIT
1	08/23/2019	ISSUED FOR DEVELOPMENT PERMIT

DESIGN: BD
DRAWN: NV
CHKD: BD
DATE: 04/13/2023
SCALE: AS SHOWN

PLANTING PLAN

LDP-2

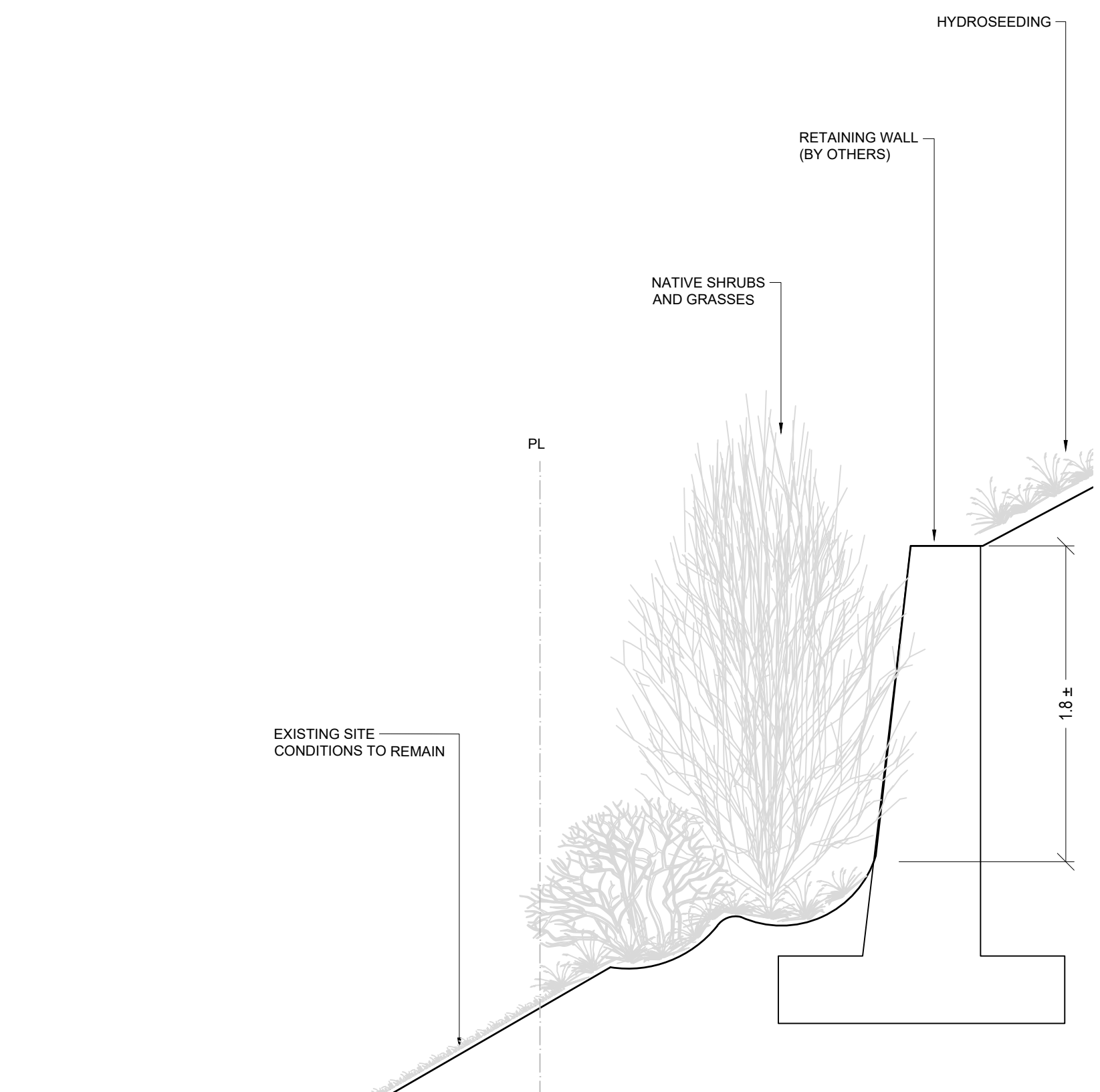
Project No. LK-19-529



4 TYP. ALLAN BLOCK GRAPHIC REPRESENTATION
N.T.S.

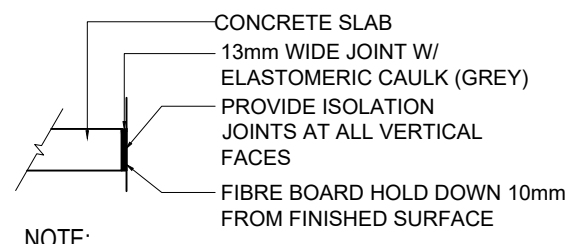


5 TYP. FLEX MSE GRAPHIC REPRESENTATION
N.T.S.

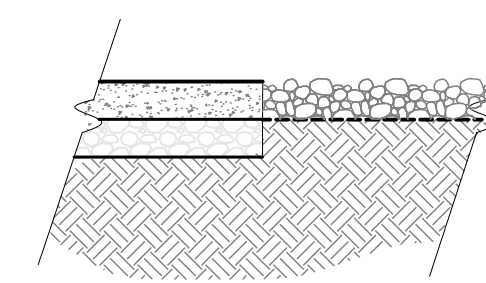
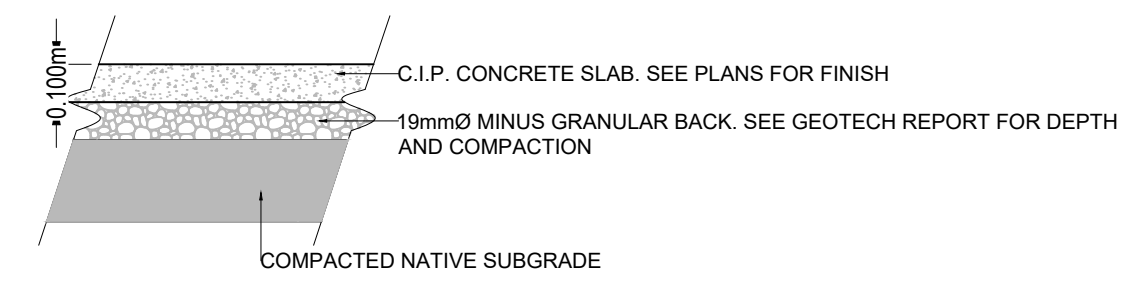
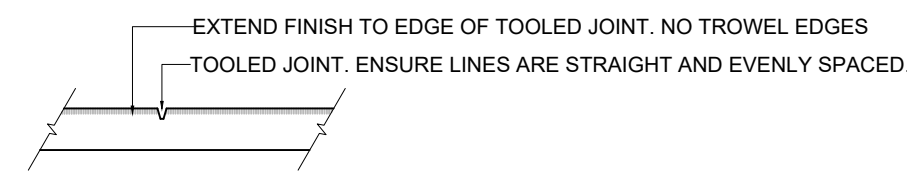
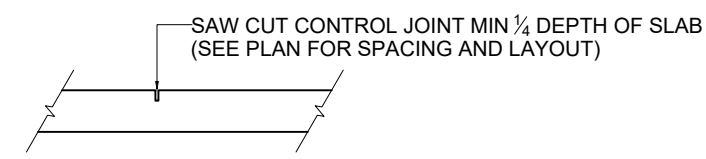


NO.	DATE (MM/DD/YY)	REVISION
2	11/28/2019	RE-ISSUED FOR DEVELOPMENT PERMIT
1	08/23/2019	ISSUED FOR DEVELOPMENT PERMIT

DESIGN: BD
DRAWN: NV
CHKD: BD
DATE: 08/19/2019
SCALE: AS SHOWN



NOTE:
PLACE EXPANSION JOINTS AT 9M MAX. INTERVALS IN ACCORDANCE
WITH THE CONTROL JOINTS SHOWN ON THE PLAN & AT ALL FIXED
OBJECT LOCATIONS SUCH AS BUILDING EDGES & MANHOLES



1 CONCRETE PAVING
1:20

2 GRAVEL SURFACING
1:20

WISHBONE SITE FURNISHINGS
#210-27090 GLOUCESTER WAY
LANGLEY, BC V4W 3Y5
TOLL FREE: 1-866-626-0476
PHONE: (604) 626-0476
FAX: (604) 626-0496
www.wishboneltd.com

SELECT DESIRED DURABLE POWDER
COATED ALUMINUM FRAME:

- BROWN SLATE
- VICTOR RIDGE II
- NORDIC LICHEN
- TIMELESS RUST
- GREY GOLD
- TEXTURED SILVER
- SELECT DESIRED CUSTOMIZED SOLUTIONS:
- CUSTOM POWDER COATING (SETUP CHARGES MAY APPLY)
- GIFTING PROGRAM (CUSTOM INSET BRONZE PLAQUES)
- LED LIGHTING BUILT INTO THE SEAT
- WITH-OUT ARMS (BVNA-6)
- OPTIONAL 30" TABLE, MODEL #RT-30
- CENTER ARM
- 4' AND 5' LENGTHS
- SKATE BLOCKS
- INST-1 STAINLESS STEEL BOLT DOWN KIT

SPECIFICATIONS:
-RE-PLAST™ RECYCLED PLASTIC SLATS
-DURABLE POWDER COATED ALUMINUM FRAME
-LONG LASTING STAINLESS STEEL HARDWARE
-10 YEAR LIMITED WARRANTY
SEAT HEIGHT: 17.5" / 445 MM
SEAT DEPTH: 18.5" / 470 MM
TOTAL HEIGHT: 33" / 838 MM
TOTAL DEPTH: 28" / 693 MM
LENGTH: 72" / 1830 MM
WEIGHT: 140 LBS / 64 KG
RECYCLED CONTENT: 75% RECYCLED CONTENT BY WEIGHT

NOTES:
1. INSTALLATION TO BE COMPLETED IN ACCORDANCE WITH MANUFACTURER'S SPECIFICATIONS.
2. DO NOT SCALE DRAWING.
3. THIS DRAWING IS INTENDED FOR USE BY ARCHITECTS, ENGINEERS, CONTRACTORS, CONSULTANTS AND DESIGN PROFESSIONALS FOR PLANNING PURPOSES ONLY. THIS DRAWING MAY NOT BE USED FOR CONSTRUCTION.
4. ALL INFORMATION CONTAINED HEREIN WAS CURRENT AT THE TIME OF DEVELOPMENT BUT MUST BE REVIEWED AND APPROVED BY THE PRODUCT MANUFACTURER TO BE CONSIDERED ACCURATE.
5. CONTRACTOR'S NOTE: FOR PRODUCT AND COMPANY INFORMATION VISIT www.CADdetails.com/info AND ENTER REFERENCE NUMBER 4289-001.

SELECT DESIRED RECYCLED PLASTIC COLORS:

- BLACK
- GREEN
- HARBOUR GREY
- LIGHT GREY
- REDWOOD
- SAND
- WALNUT

SELECT DESIRED LENGTH:

- 4' (BV-4)
- 5' (BV-5)
- 6' (BV-6) (SHOWN)

TOP VIEW

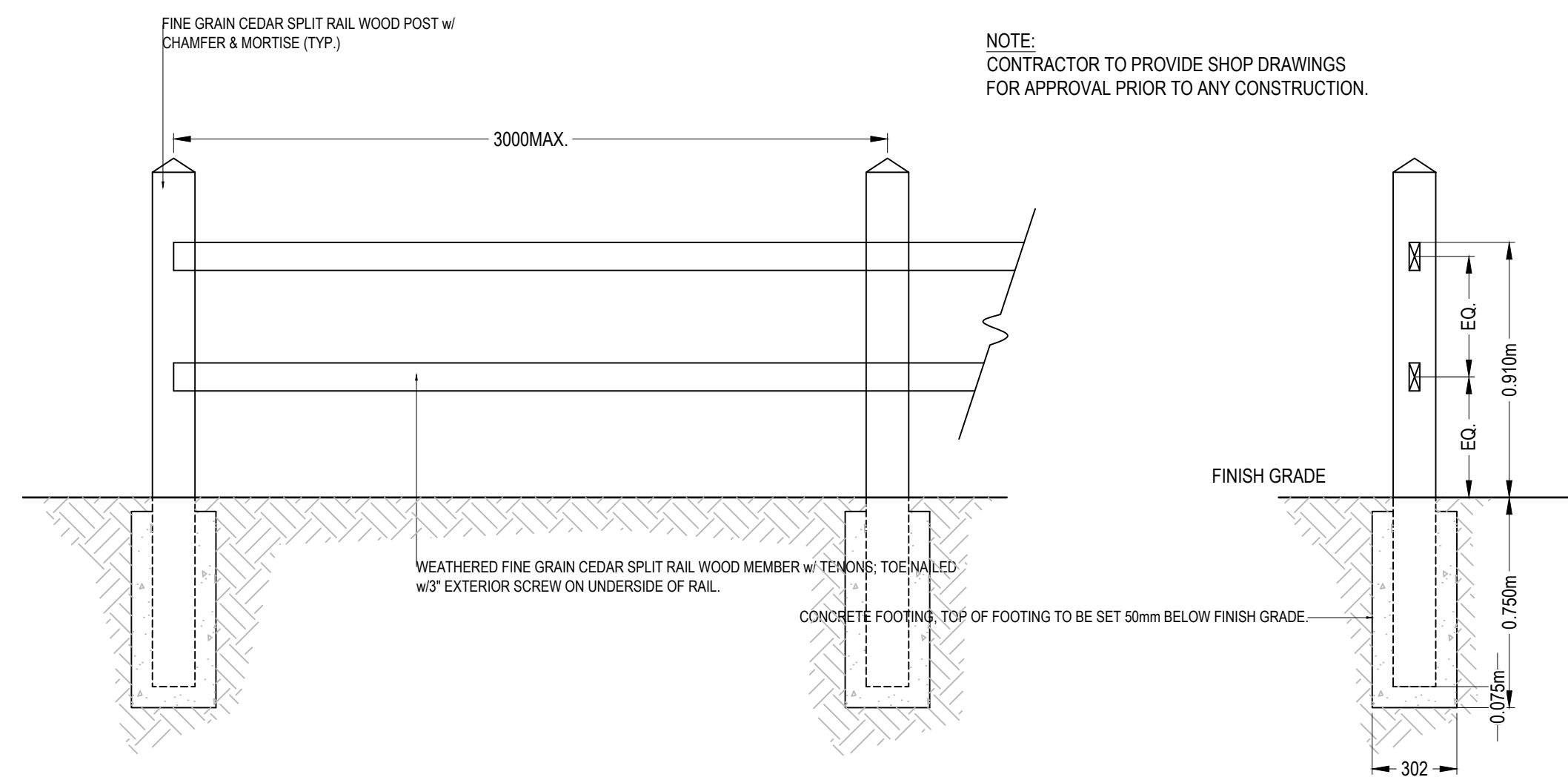
SIDE ELEVATION

FRONT ELEVATION

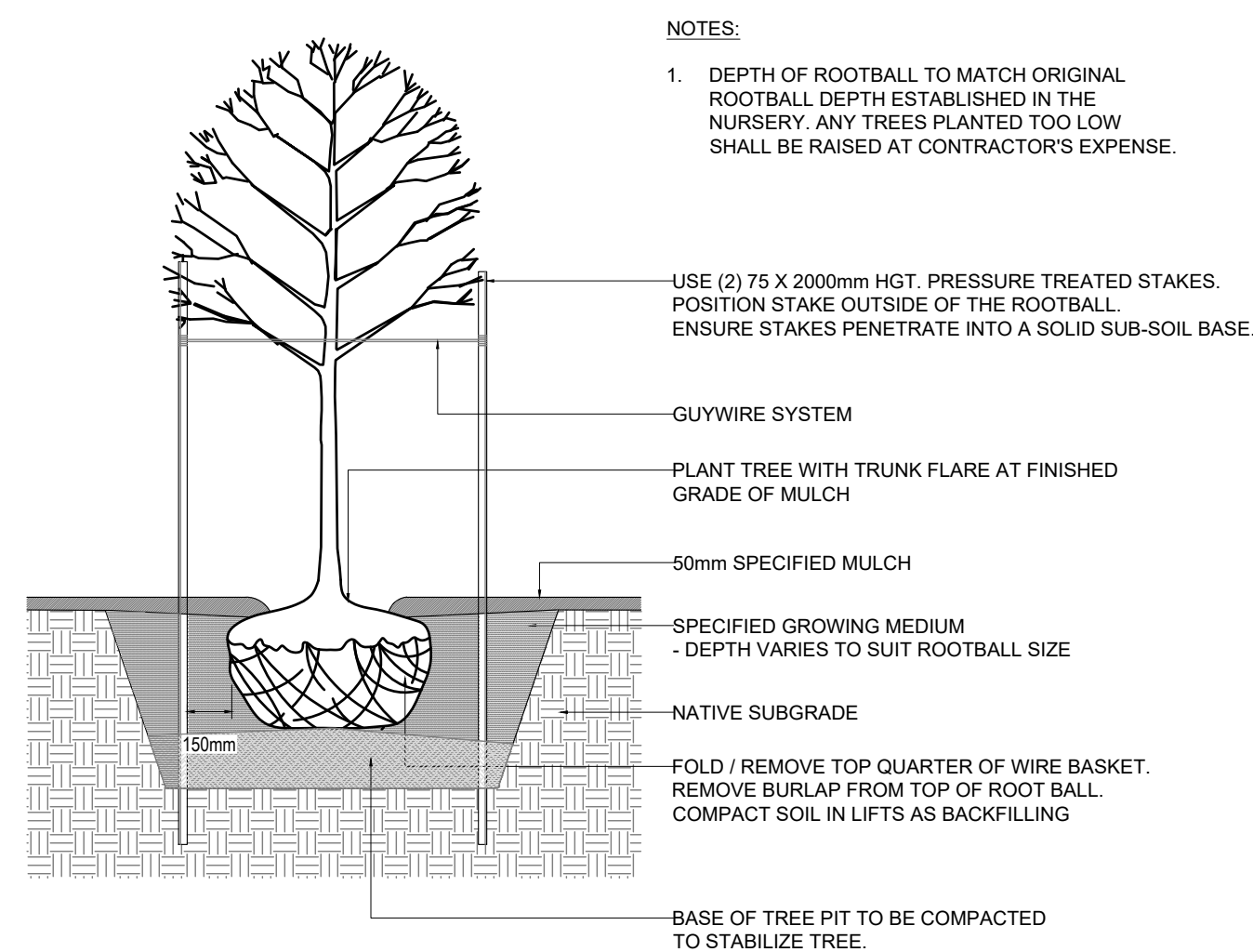
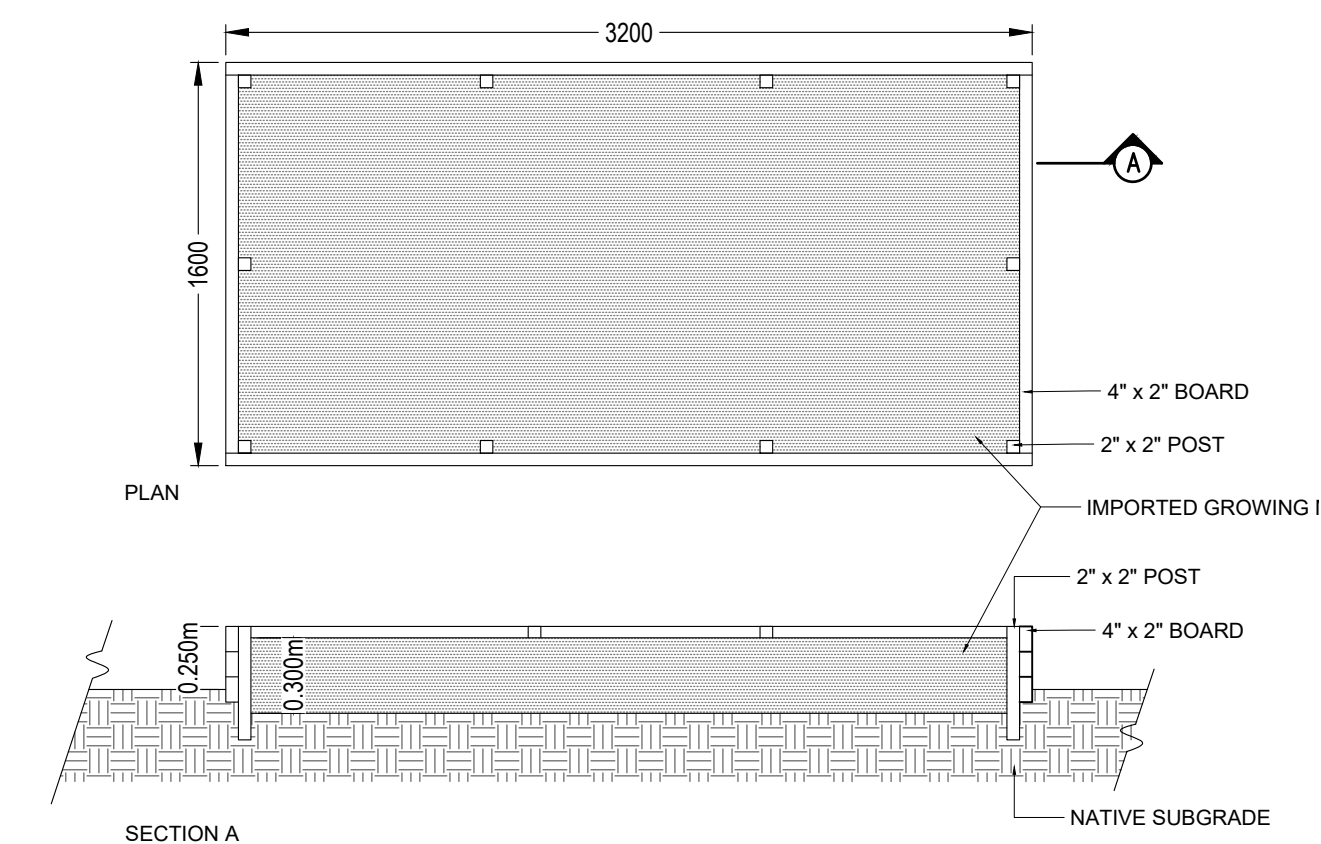
ISOMETRIC VIEW

3 BENCH
N.T.S.

4 TIMBER FENCE
1:20

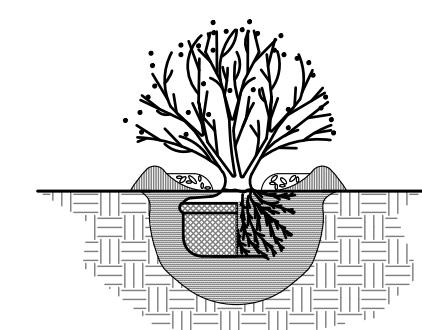


5 RAISED PLANTER
1:30

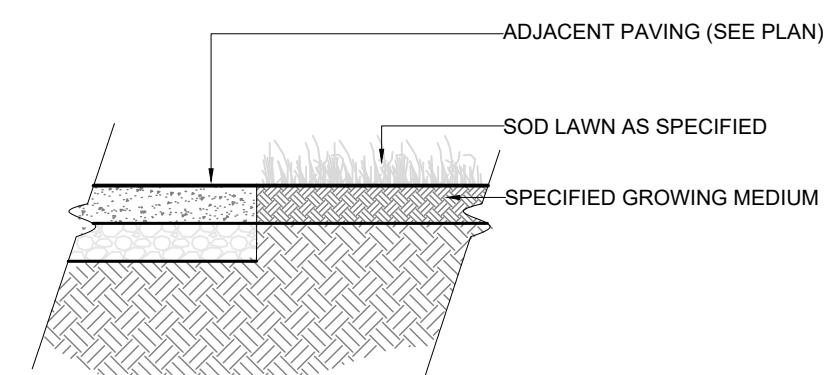


6 TREE PLANTING
1:30

7 SHRUB PLANTING
1:30



8 SOD LAWN PLANTING
1:20



NO.	DATE (MM/DD/YY)	REVISION
2	11/28/2019	RE-ISSUED FOR DEVELOPMENT PERMIT
1	08/23/2019	ISSUED FOR DEVELOPMENT PERMIT

DESIGN: BD
DRAWN: NV
CHKD: BD
DATE: 08/19/2019
SCALE: AS SHOWN